

Fuji 0178

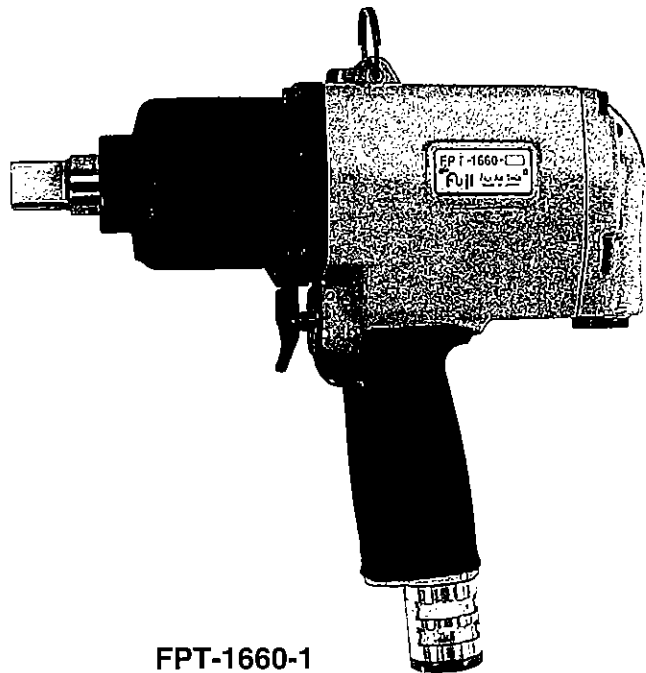


USER MANUAL

PULSE WRENCH SHUT-OFF TYPE

MODELS : FPT-1660-1

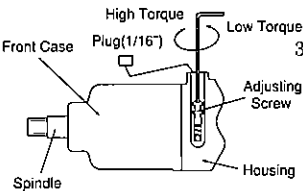
PAT. P



FPT-1660-1

■ Torque is preset at the min. torque of Recommended Torque Range when the tool is shipped. Adjust torque before use.

■ How to Adjust Torque



1. Unscrew Plug(1/16") on Housing by F-704 Hex Pin Wrench.
2. Turn Spindle by hand until Adjusting Screw can be seen through Plug hole.
3. Turn Adjusting Screw clockwise by F-701-1 Hex Pin Wrench to increase torque and counter clockwise to decrease torque.
4. Screw Plug back to Housing by F-704 Hex Pin Wrench after setting torque.
5. Always set Plug to Housing when using wrench.

SPECIFICATIONS

Model	Bolt Size	Recommended Torque Range			Rotational Frequency	Distance from Center to Side		Square Drive Size		Overall Length		Mass		Air Consumption (At Load)		Air Hose Size	
		N·m	kgf·m	ft·lb		min ⁻¹	mm	in	mm	in	mm	in	kg	lb	m ³ /min	ft ³ /min	mm
FPT-1660-1	M16~M18	150~210	15.3~21.4	110.6~154.9	2,800	35.0	1 25/64	19.0	3/4	266	10 31/64	4.4	9.7	1.2	42.4	9.5	3/8

Air Inlet Thread : PT or NPT 3/8"

Use above model at 0.5~0.63MPa (5.0~6.3kgf/cm²) air pressure. The performance figures are at 0.63MPa (6.3bar).

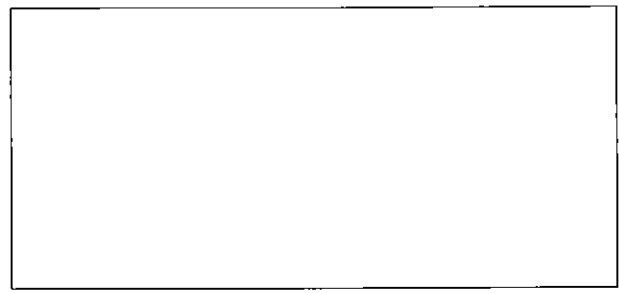
⚠ Refer to "The Instructions and Warning for Safety Use" enclosed in each tool box.

FUJI AIR TOOLS CO., LTD.

2-1-14 Kamiji, Higashinari-ku, Osaka, 537-0003 Japan

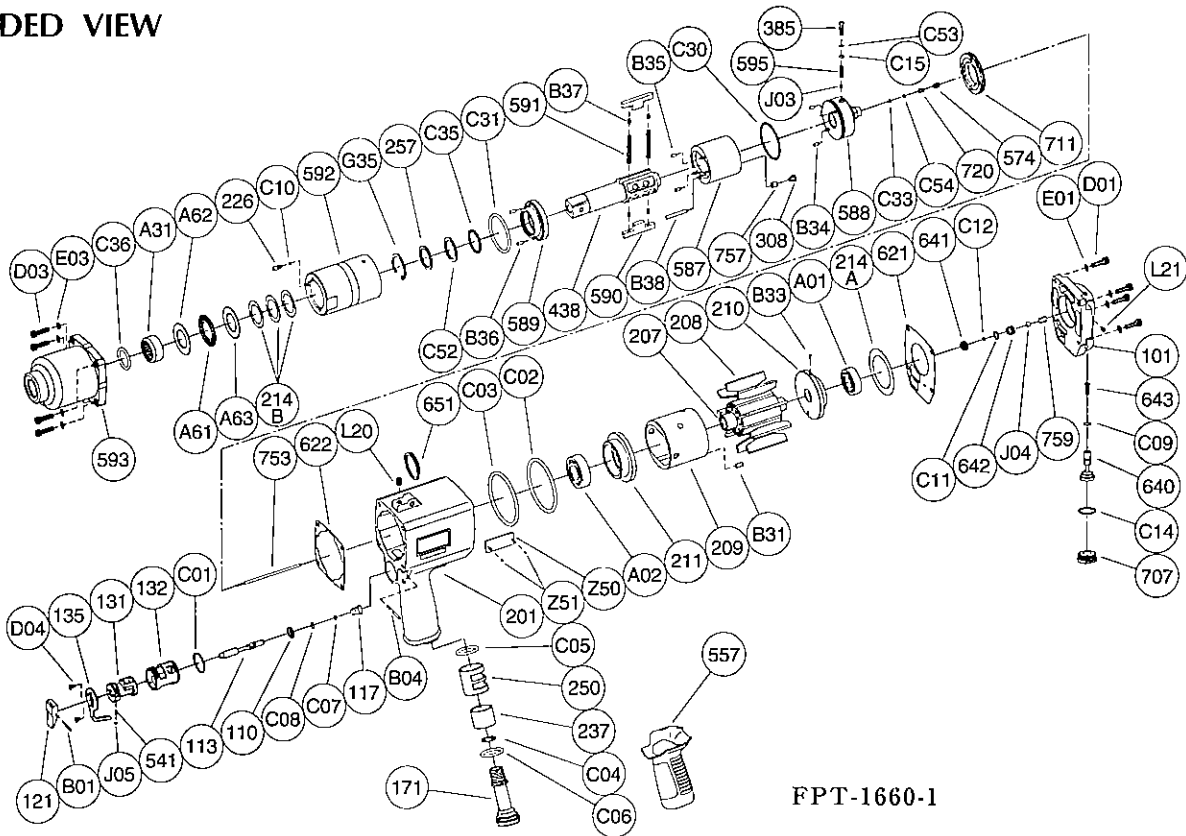
Tel : (06) 6972-2335

Fax : (06) 6972-2250



PARTS LIST MODEL: FPT-1660-1

EXPLODED VIEW



FPT-1660-1

PARTS LIST

Index No.	Parts No.	Parts Name	Qt.	Index No.	Parts No.	Parts Name	Qt.	Index No.	Parts No.	Parts Name	Qt.
Assy No.	W-360001-00	Housing Cover Ass'y		C05	O-S25	" O " Ring	1	C52	BR-215F	Back Up Ring	1
101	W-360101-00	Housing Cover	1	C06	O-S25	" O " Ring	1	C53	BR-P3T2	Back Up Ring	1
640	W-360640-00	Stop Valve	1	C07	O-S4	" O " Ring	1	C54	BR-S2.5FT2	Back Up Ring	1
641	W-326641-00	Stop Valve Front Cover	1	C08	O-P5	" O " Ring	1	G35	SR-RA32	Snap Ring	1
642	W-326642-00	Stop Valve Rear Cover	1	D04	CS-36S	Cap Screw	2	J03	B-3	Ball	1
643	W-360643-00	Stop Valve Spring	1	J05	B-3	Ball	1	Assy No.	W-360033-00	Front Case Ass'y	
707	W-333707-00	Valve Cover	1	L20	PL-1/16	Plug	1	593	W-360593-00	Front Case	1
759	W-326759-00	Return Spring	1	Assy No.	W-360021-00	Oil Cylinder Ass'y		A31	NB-HMK2515C	Needle Bearing	1
C09	O-P11	" O " Ring	1	226	W-281226-00	Oil Plug	1	C36	O-S25	" O " Ring	1
C11	O-S9	" O " Ring	1	257	W-341257-00	Washer	1	207	W-341207-00	Rotor	1
C12	O-S3	" O " Ring	1	308	W-335308-00	Spacer	1	208	W-341208-00	Rotor Blade	9
C14	O-S20	" O " Ring	1	385	W-335385-00	Adjusting Screw	1	209	W-341209-00	Cylinder	1
J04	B-7	Ball	1	438	W-341438-00	Spindle	1	(B31)	SP-410	Spring Pin	1
L21	PL-1/32	Plug	1	574	W-326574-00	Bolt Holder	1	210	W-341210-00	Cylinder Upper Plate	1
Assy No.	W-360006-00	Housing Ass'y (PT)		587	W-341587-00	Oil Cylinder	1	(B33)	SP-26	Spring Pin	1
Assy No.	W-360006-01	Housing Ass'y (NPT)		588	W-360588-00	Oil Cylinder Upper Plate	1	211	W-341211-00	Cylinder Lower Plate	1
110	W-341110-00	Throttle Valve	1	589	W-360589-00	Oil Cylinder Lower Plate	1	214A	W-341214-00	Adjusting Washer	1
113	W-341113-00	Throttle Valve Rod	1	590	W-341590-00	Spindle Blade	2	214B	D-029214-00	Adjusting Washer	3
117	W-282117-01	Throttle Valve Spring	1	(B37)	SP-36	Spring Pin	4	557	W-341557-00	Protector	1
121	W-283121-00	Throttle Valve Lever	1	591	W-341591-00	Blade Spring	2	621	W-360621-00	Packing (A)	1
131	W-341131-00	Reverse Valve	1	592	W-360592-00	Cylinder Case	1	622	W-341622-00	Packing (B)	1
132	W-341132-00	Reverse Valve Bushing	1	595	W-360595-00	Torque Adjusting Spring	1	651	W-181651-00	Horizontal Hanger	1
135	W-341135-01	Reverse Valve Lever	1	711	W-341711-00	Cylinder Cover	1	753	W-360753-00	Piston Rod	1
171	W-341171-00	Inlet Joint (PT)	1	720	W-300720-00	Piston	1	A01	BB-6003	Ball Bearing	1
	W-341171-01	Inlet Joint (NPT)	1	757	W-224757-00	Needle	1	A02	BB-6004	Ball Bearing	1
201	W-360201-00	Housing	1	B34	NR-3.56	Needle Roller	2	A61	NB-NTB2542	Thrust Needle Bearing	1
237	W-341237-00	Muffler Pad	1	B35	NR-3.56	Needle Roller	2	A62	TW-AS2542	Thrust Washer	1
250	W-341250-00	Exhaust Cover	1	B36	GP-36GCH	Grooved Pin	2	A63	TW-AS2542	Thrust Washer	1
541	W-252541-00	Button Retainer Spring (F)	1	B38	NR-430	Needle Roller	1	D01	CS-516	Cap Screw	4
B01	SP-212	Spring Pin	1	C10	O-S3 (H)	" O " Ring	1	D03	CS-520	Cap Screw	4
B04	GP-2.532GLC	Grooved Pin	1	C15	O-P3 (H)	" O " Ring	1	E01	PW-5K	Plain Washer	4
C01	O-S24	" O " Ring	1	C30	O-S46 (H)	" O " Ring	1	E03	PW-5K	Plain Washer	4
C02	O-S67	" O " Ring	1	C31	O-47X1.6 (H)	" O " Ring	1	Z50	NP-2070	Name Plate	1
C03	O-S67	" O " Ring	1	C33	O-S1.4F	" O " Ring	1	Z51	NPN-0X3.2	Screw Rivet	2
C04	O-S15	" O " Ring	1	C35	O-X215 (H)	" O " Ring	1				

□ Assy No. denotes no. of the assembled parts comprising of more than 1 pc. of parts.

The related parts are shown in the thick frame.

□ Index Nos. 209, 210 and 590 are supplied together with parts shown in ().

□ Specify parts number and quantity in ordering.

■ Standard Accessories : F-701-1.....1.5mm Hex. Pin Wrench 1.

F-704.....4mm Hex. Pin Wrench 1.