

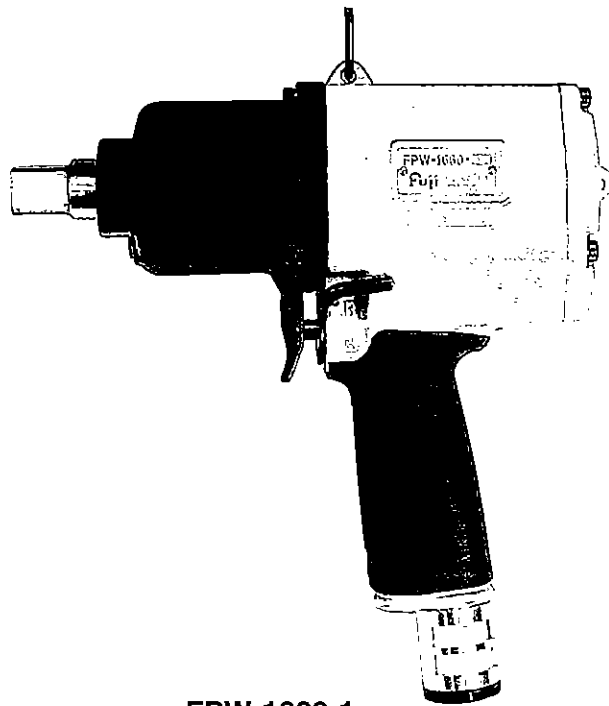


Fuji 0127

USER MANUAL

PULSE WRENCH

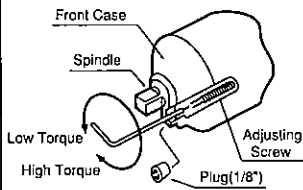
MODELS : FPW-1660-1



FPW-1660-1

■ Torque is preset at the max. torque of Recommended Torque Range when the tool is shipped. Adjust torque before use.

■ How to Adjust Torque



3. Turn Adjusting Screw clockwise by F-712-2 Hex Pin Wrench to increase torque and counter clockwise to decrease torque.

1. Unscrew Plug(1/8") on Front Case by F-705 Hex Pin Wrench.

4. Screw Plug back to Front Case by F-705 Hex Pin Wrench after setting torque.

2. Turn Spindle by hand until Adjusting Screw can be seen through Plug hole.

5. Always set Plug to Front Case when using wrench.

SPECIFICATIONS

Model	Bolt Size	Recommended Torque Range			Rotational Frequency	Distance from Center to Side		Square Drive Size		Overall Length		Mass		Air Consumption (At Load)	
		N·m	kgf·m	ft·lb		mm	in	mm	in	mm	in	kg	lb	m ³ /min	ft ³ /min
FPW-1660-1	M14~M16	120~250	12.2~25.5	88.5~184.4	3,000	35	1 3/8	19	3/4	243	9 37/64	3.8	8.4	1.2	42.4

Air Hose Size : 12.7mm (1/2")
Air Inlet Thread Size : PT or NPT 3/8"

The performance figures are at 0.63MPa (6.3bar).

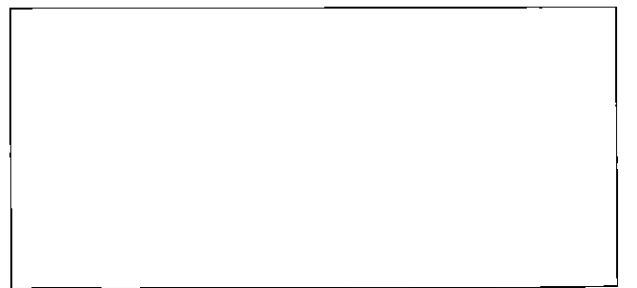
⚠ Refer to "The Instructions and Warning for Safety Use" enclosed in each tool box.

FUJI AIR TOOLS CO., LTD.

2-1-14 Kamiji, Higashinariku, Osaka 537-0003, Japan

Tel : (06) 6972-2335

Fax : (06) 6972-2250



BOLT & NUT SETTERS
SCREW DRIVERS

ABRASIVE TOOLS

DRILLS · TAPPERS

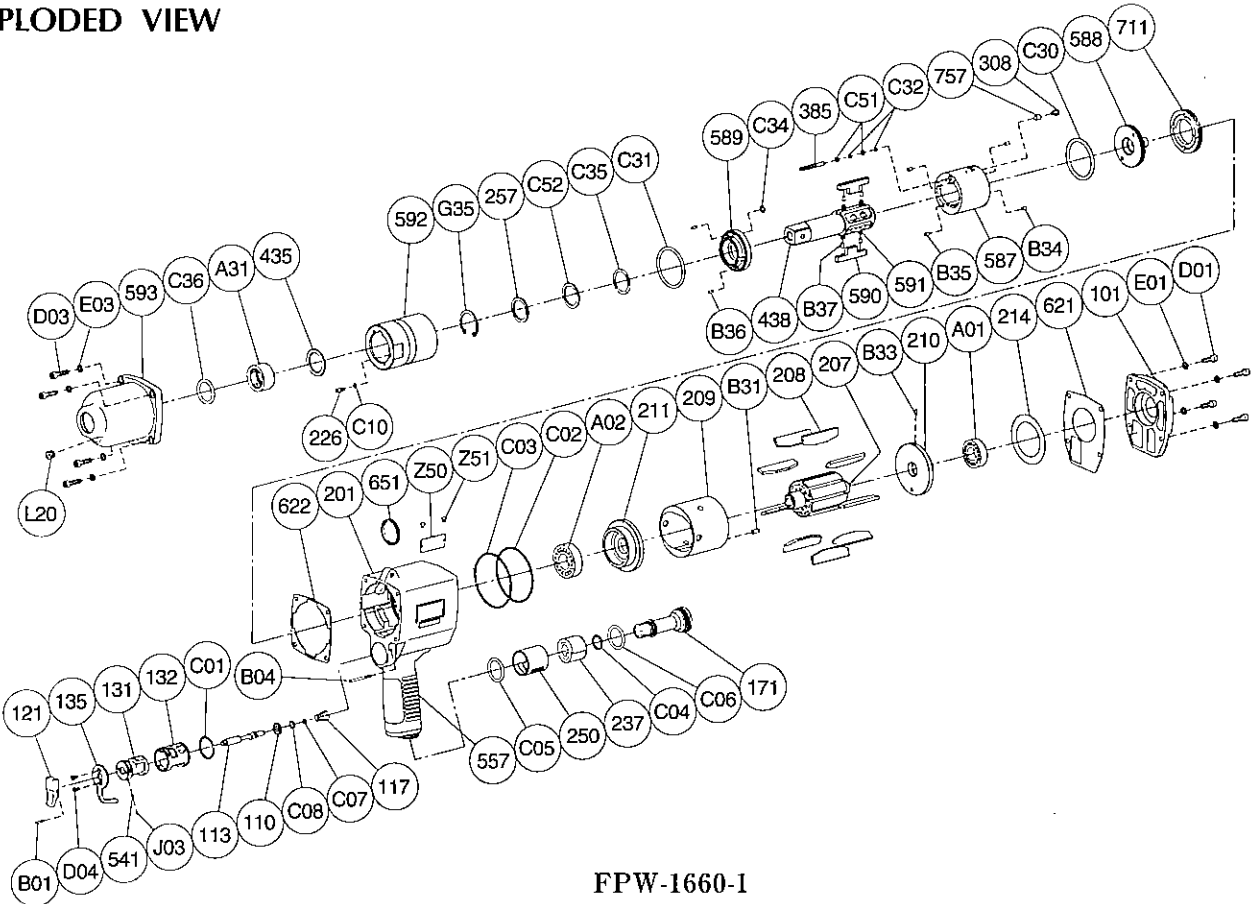
PERCUSSION TOOLS

AIR MOTORS & OTHERS

OTHER PRODUCTS

PARTS LIST MODEL: FPW-1660-1

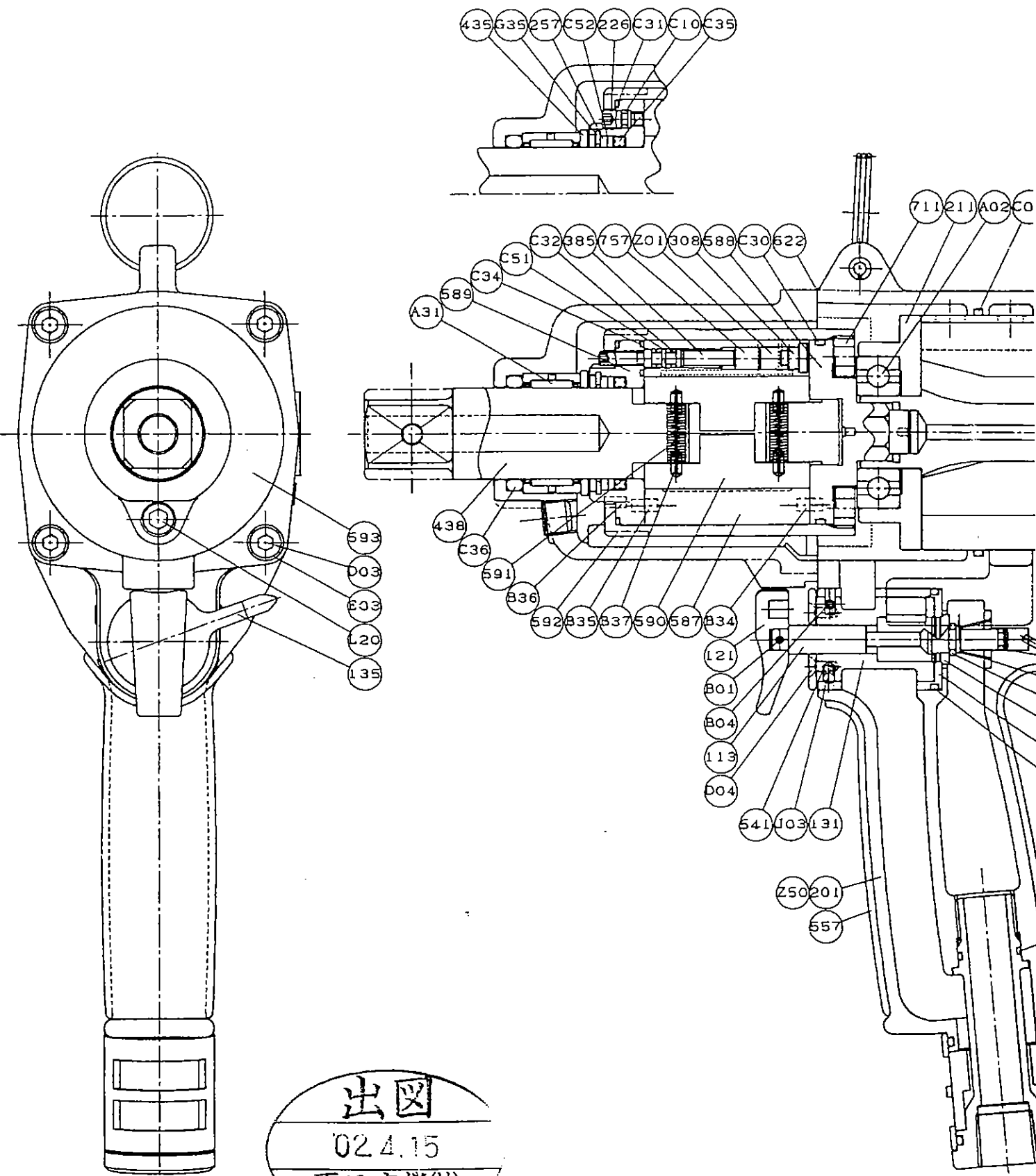
EXPLODED VIEW



PARTS LIST

Index No.	Parts No.	Parts Name	Qt.	Index No.	Parts No.	Parts Name	Qt.	Index No.	Parts No.	Parts Name	Qt.
Assy No.	W-341006-02	Housing Assy (PT)		Assy No.	W-341021-01	Oil Cylinder Assy		Assy No.	W-341033-00	Front Case Assy	
Assy No.	W-341006-03	Housing Assy (NPT)		226	W-281226-00	Oil Plug	1	593	W-341593-00	Front Case	1
110	W-341110-00	Throttle Valve	1	257	W-341257-00	Washer	1	A31	NB-NK25/16	Needle Bearing	1
113	W-341113-00	Throttle Valve Rod	1	308	W-283308-00	Spacer	1	C36	O-P25	"O" Ring	1
117	W-282117-01	Throttle Valve Spring	1	385	W-341385-00	Adjusting Screw	1	L20	PL-1/8	Plug	1
121	W-283121-00	Throttle Valve Lever	1	438	W-341438-00	Spindle	1	101	W-341101-00	Housing Cover	1
131	W-341131-00	Reverse Valve	1	587	W-341587-00	Oil Cylinder	1	207	W-341207-00	Rotor	1
132	W-341132-00	Reverse Valve Bushing	1	588	W-341588-00	Oil Cylinder Upper Plate	1	208	W-341208-00	Rotor Blade	9
135	W-341135-01	Reverse Valve Lever	1	589	W-341589-00	Oil Cylinder Lower Plate	1	209	W-341209-00	Cylinder	1
171	W-341171-00	Inlet Joint (PT)	1	590	W-341590-00	Spindle Blade	2	(B31)	SP-410	Spring Pin	1
171	W-341171-01	Inlet Joint (NPT)	1	(B37)	SP-36	Spring Pin	4	210	W-341210-00	Cylinder Upper Plate	1
201	W-341201-00	Housing	1	591	W-341591-00	Blade Spring	2	(B33)	SP-26	Spring Pin	1
237	W-341237-00	Muffler Pad	1	592	W-341592-00	Cylinder Case	1	211	W-341211-00	Cylinder Lower Plate	1
250	W-341250-00	Exhaust Cover	1	711	W-341711-00	Cylinder Cover	1	214	W-341214-00	Adjusting Washer	1
541	W-252541-00	Button Retainer Spring (F)	1	757	W-224757-00	Needle	1	435	W-341435-00	Thrust Washer	1
B01	SP-212	Spring Pin	1	B34	NR-3.56	Needle Roller	2	557	W-341557-00	Protector	1
B04	GP-2.532GLC	Grooved Pin	1	B35	NR-3.56	Needle Roller	2	621	W-341621-00	Packing (A)	1
C01	O-S24	"O" Ring	1	B36	GP-36GCH	Grooved Pin	2	622	W-341622-00	Packing (B)	1
C02	O-S67	"O" Ring	1	C10	O-S3(H)	"O" Ring	1	651	W-181651-00	Horizontal Hanger	1
C03	O-S67	"O" Ring	1	C30	O-S46(H)	"O" Ring	1	A01	BB-6003	Ball Bearing	1
C04	O-S15	"O" Ring	1	C31	O-47X1.6(H)	"O" Ring	1	A02	BB-6004	Ball Bearing	1
C05	O-S25	"O" Ring	1	C32	O-S3(H)	"O" Ring	2	D01	CS-516	Cap Screw	4
C06	O-S25	"O" Ring	1	C34	O-S6(H)	"O" Ring	1	D03	CS-520	Cap Screw	4
C07	O-S4	"O" Ring	1	C35	O-X215(H)	"X" Ring	1	E01	PW-5K	Plain Washer	4
C08	O-P5	"O" Ring	1	C51	BR-S3FT2	Back Up Ring	2	E03	PW-5K	Plain Washer	4
D04	CS-36S	Cap Screw	2	C52	BR-215F	Back Up Ring	1	Z50	NP-2056	Name Plate	1
J03	B-3	Ball	1	G35	SR-IRA32	Snap Ring	1	Z51	NPN-0X3.2	Screw Rivet	2

- Assy No. denotes No. of the assembled parts comprising of more than 1 pc. of parts. ■ Standard Accessories : F-712-2 2mm Hex. Pin Wrench 1. The related parts are shown in the thick frame. F-705 5mm Hex. Pin Wrench 1.
- Index Nos. 209, 210 and 590 are supplied together with parts shown in () .
- Specify parts number and quantity in ordering.



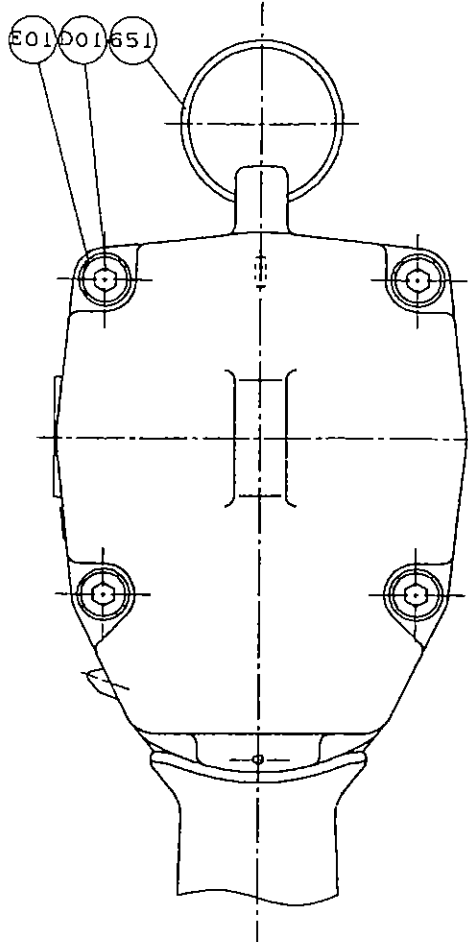
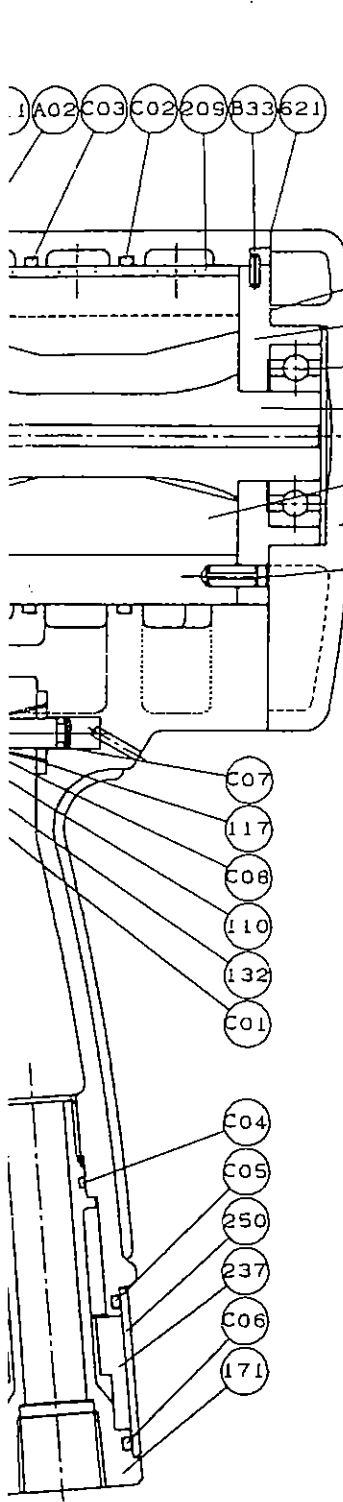
出図
 02.4.15
 不二空機(株)
 技術部

S P E C I F I C A T I O N S

TYPE	SQUARE DRIVE SIZE	CAPACITY (SCREW SIZE)	AIR PRESSURE 0.63MPa			OVERALL LENGTH	SIDE TO CENTER	MASS
			ROTATIONAL FREQUENCY	AIR CONSUMPTION (UNDER LOAD) (NORMAL CONDITION)	TORQUE			
			mm	mm	min ⁻¹			
FPW-1660-1	19.0	M16~M18	3000	1.2	220~300	243	35	3.8

Fuji 0127

FPW-1660-1



C01	O-S24	* O' RING	1
C02	O-S67	* O' RING	1
C03	O-S67	* O' RING	1
C04	O-S15	* O' RING	1
C05	O-S25	* O' RING	1
C06	O-S25	* O' RING	1
C07	O-S4	* O' RING	1
C08	O-P5	* O' RING	1
C10	O-S3 (H)	* O' RING (HNBR80)	1
C30	O-S46 (H)	* O' RING (HNBR80)	1
C31	O-47X1.6 (H)	* O' RING (HNBR80)	1
C32	O-S3 (H)	* O' RING (HNBR80)	2
C34	O-S6 (H)	* O' RING (HNBR80)	1
C35	O-X215 (H)	* X' RING (HNBR80)	1
C36	O-P25	* O' RING	1
C51	BR-S3FT2	BACK-UP RING	2
C52	BR-215	BACK-UP RING	1
D01	CS-516	CAP SCREW	4
D03	CS-520	CAP SCREW	4
D04	CS-36S	FLAT HEAD CAP SCREW	2
E01	PW-5K	PLAIN WASHERR (SMALL TYPE)	4
E03	PW-5K	PLAIN WASHERR (SMALL TYPE)	4
G35	SR-RA32	SNAP RING	1
J03	B-3	STEEL BALL	1
L20	PL-1/8	PLUG	1
Z01	OIL-25	OIL	1
Z50	NS-C2000	NAME SEAL	1

DRAW No.	PARTS No.	NAME OF PART	QTY
101	W-341101-00	HOUSING COVER	1
110	W-341110-00	THROTTLE VALVE	1
113	W-341113-00	THROTTLE VALVE ROD	1
117	W-282117-01	THROTTLE VALVE SPRING	1
121	W-283121-00	THROTTLE VALVE LEVER	1
131	W-341131-00	REVERSE VALVE	1
132	W-341132-00	REVERSE VALVE BUSHING	1
135	W-341135-00	REVERSE VALVE LEVER	1
171	W-341171-00	INLET JOINT (PT)	1
	W-341171-01	INLET JOINT (NPT)	
201	W-341201-00	HOUSING	1
207	W-341207-00	ROTOR	1
208	W-341208-00	ROTOR BLADE	9
209	W-341209-00	CYLINDER	1
210	W-341210-00	CYLINDER UPPER PLATE	1
211	W-341211-00	CYLINDER LOWER PLATE	1
214	W-341214-00	ADJUSTING WASHER (SHIM)	1
226	W-281226-00	OIL PLUG	1
237	W-341237-00	MUFFLER PAD	1
250	W-341250-00	EXHAUST COVER	1
257	W-341257-00	WASHER	1
308	W-283308-00	SPACER	1
385	W-341385-00	ADJUSTING SCREW	1
435	W-341435-00	THRUST WASHER	1
438	W-341438-00	SPINDLE	1
541	W-252541-00	BUTTON RETAINER SPRING (P)	1
557	W-341557-00	PROTECTOR	1
587	W-341587-00	OIL CYLINDER	1
588	W-341588-00	OIL CYLINDER UPPER PLATE	1
589	W-341589-00	OIL CYLINDER LOWER PLATE	1
590	W-341590-00	SPINDLE BLADE	2
591	W-341591-00	BLADE SPRING	2
592	W-341592-00	CYLINDER CASE	1
593	W-341593-00	FRONT CASE	1
621	W-341621-00	PACKING (A)	1
622	W-341622-00	PACKING (B)	1
651	W-181651-00	HANGER	1
711	W-341711-00	CYLINDER COVER	1
757	W-224757-00	NEEDLE	1
A01	BB-6003	BALL BEARING	1
A02	BB-6004	BALL BEARING	1
A31	NB-NK25/16	NEEDLE BEARING	1
B01	SP-212	SPRING PIN	1
B04	GP-2.534GLC	GROOVED PIN	1
B31	SP-410	SPRING PIN	1
B33	SP-26	SPRING PIN	1
B34	NR-3.56	NEEDLE ROLLER	2
B35	NR-3.56	NEEDLE ROLLER	2
B36	GP-36GCH	GROOVED PIN	2
B37	SP-36	SPRING PIN	4

ASS	AIR INLET THREAD	AIR HOSE SIZE
8	PT	mm
8	NPT 3/8	12.7

PNEU PULSE WRENCH			
TYPE		FPW-1660-1	
DRAWING No.	W-341 A50-01	APPROVED BY	SUEYOSHI
SCALE	NTS	CHECKED BY	OHTA
DATE	2001.5	DRAWN BY	YASUBA
FUJI AIR TOOLS CO., LTD.			