

# UnionX 8GB MP4 Player w/FM User Manual



Thank you for purchasing this UnionX 8GB MP4 Player. We encourage you to read this manual carefully before using your player.

## Content

Chapter 1	Note .....	2
Chapter 2	Unit Introduction .....	4
	2.1 Buttons introduction .....	4
	Quick guide – getting started right away .....	4
	2.2 Power On/Off .....	5
	2.3 Battery indicator & Charging .....	6
Chapter 3	Basic Operation .....	7
	3.1 Selecting functions menu .....	7
	3.2 Working mode .....	8
	3.2.1 Music mode .....	8
	3.2.2 Video mode .....	17
	3.2.3 Photo mode .....	21
	3.2.4 E-Book mode .....	22
	3.2.5 Record mode .....	23
	3.2.6 Voice mode .....	24
	3.2.7 FM radio .....	24
	3.2.8 Setup mode .....	27
	3.3 USB removable disk .....	30
Chapter 4	Format MP4 Player .....	33
Chapter 5	DRM Functions Operation .....	34
Chapter 6	References to User .....	38
	6.1 Trouble-shooting .....	38
	6.2 Specifications .....	39

## Chapter 1 Note

### 1) Thank you for purchasing this UnionX 8GB MP4 Player. We encourage you to read this manual carefully before using your player.

- To provide better service, the content of this manual may change in future versions since the specifications and functions of the product are subject to change. **Please check [accession@teknihall.com](mailto:accession@teknihall.com) for latest firmware updates.**
- The display screen pictures contained in this user manual are used only for instructional purposes. Actual display pictures may be different on your device.
- IMPORTANT: The UnionX 8GB MP4 Player is NOT compatible with products from iTunes® store.
- IMPORTANT: Please turn on the player if you need to charge it.
- IMPORTANT: Most users do not need the CD driver that comes along the UnionX 8GB MP4 Player. It is only for OS Windows 98 and 98SE.
- IMPORTANT: When transferring music, Video and pictures from your PC/laptop to your MP4 Player we suggest you to use the Drag and Drop function described on page 30.

### 2) Please read the following instructions carefully for your safety and prevention of property damage.

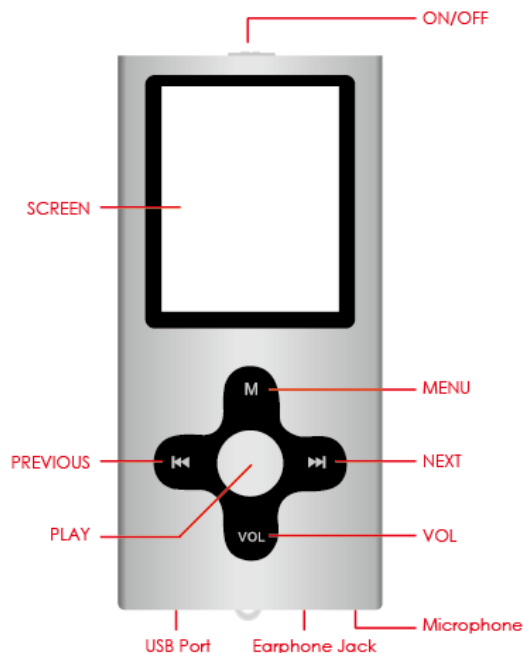
- Keep the player away from humid places or temperature extremes (higher than 40<sup>o</sup> C or lower than -10<sup>o</sup> C).
- Make sure not to let any dirt or liquid into the unit.
- Don't expose the device to chemicals such as benzene or diluents.

- Do not leave the product under direct sunshine or near any heat sources.
- Do not dismantle, assemble or alter the product arbitrarily.
- Do not drop, or deliver a strong shock or vibration to the unit as this can cause a malfunction.
- Never put heavy items on the Player.
- Do not touch the charger with wet hands.
- Keep the player away from dusty places
- Please keep the player away from strong magnetic or electrical fields
- The company cannot accept any liability for data loss or recorded file loss caused by a malfunction, repair or other reasons.
- Do not use earphone while driving a bicycle or motorcycle. Use of earphones while driving is dangerous and is illegal in some areas.
- Do not listen to music at very loud volumes.
- Please lower the volume level or stop using earphones if you suffer from tinnitus.

## Chapter 2 Unit Introduction

### 2.1 Buttons introduction

- 1) NEXT: Fast-forward/ next song (⏭) / next
- 2) PREVIOUS: Fast-backward/ previous song (⏮) / last
- 3) Play: Play/Pause/, On/Off, Enter submenu
- 4) VOL: Volume button
- 5) MENU: MENU button, Exit current mode
- 6) USB Port: USB interface
- 7) Earphone Jack: Connect the headset
- 8) SCREEN: LCD screen
- 9) ON/OFF: Power switch
- 10) Microphone: Built-in MIC for voice recording



### Quick guide – getting started right away

1. Connect the Player to the PC/laptop via the USB cable
2. Go to “My Computer” and open the “Removable disc”. Minimize the window.
3. Access your Music on your PC/Laptop. Select the Music files you want to download to your new UnionX MP4 Player.
4. Use your mouse to Drag’n Drop music from your PC/Laptop to your UnionX MP4 Player
5. When the music is downloaded to your Player, you should disconnect the Player from the PC/Laptop

6. Turn on your MP4 Player. Go to Music in the main menu and press "MENU" to enter the music mode.
7. Press "MENU" again and use "NEXT" button to go to the submenu "Folder" to find the song you like and press "Play" button.

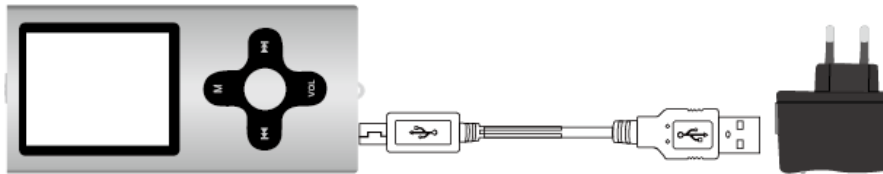
## 2.2 Power On/Off

- To turn on the Player, please move the On/Off button to On-position.
  - To turn off the Player, please move the On/Off button to Off-position.
- In On-position:
- press "PLAY" button for 3 seconds to turn on the player.
  - press "PLAY" button for 3 seconds to turn off the player.
  - The player will power-off automatically - even when it is playing music or video - after a period of inactivity (no pressing any key) as per your settings in the Auto power-Off timer. The inactivity time can be set from 15 to 120minutes. Or, you can choose to set "Close", so that the "power-off automatically" feature is not to be used.
  - When the player is turned on but not in use, it will power off automatically in 2 minutes.

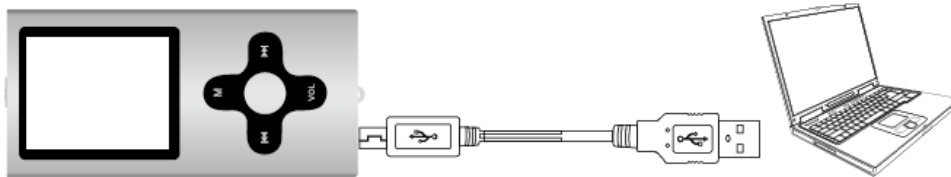
## 2.3 Battery indicator & Charging

- When the device is fully charged, the battery voltage is 3.8V and the battery indicator blocks are full, then it gradually becomes blank as the use time increases.
- When the battery runs out, the battery capacity indicator blocks become blank.
- When the Battery is empty, please connect the Player to your PC/Laptop or to the charger via the USB cable and start charging.

**Note: Please slide the power ON / OFF switch to “ON” position before plugging the USB cable into unit for charging.**



Charging via power adaptor



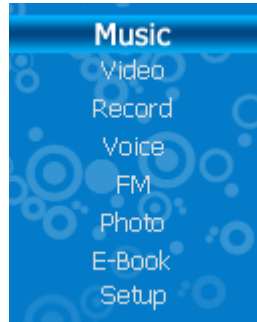
Charging via PC/laptop

## Chapter 3 Basic Operation

### 3.1 Selecting functions menu

- Enter the menu mode: from the main menu, short press **【MENU】** button to enter different mode.
- Exit the current mode: in any working mode, long press **【MENU】** button to exit the current mode and return to main menu.
- Exit the current menu: in any submenus, short press **【MENU】** button to exit the current menu and return to upward menu.
- Enter the current menu: in any submenus, short press **【Play】** button to enter and confirm.
- Access different functions by entering different modes:

Mode (Main menu):





## 3.2 Working mode


### 3.2.1 Music mode

In Music mode the LCD screen displays the work modes as follows: play, pause, volume adjust, fast-backward / fast-forward, and so on. You can also choose different repeat modes, equalizers, play rate, file management, and to adjust the settings.

- **Basic options**

- a) Play: in Music mode, short press **【MENU】** button to enter relative playing interface, then press **【Play】** button to start playing, press **⏮** or **⏭** button to choose the music to play:



- b) Pause: in Playback mode, short press **【Play】** button to pause the playing of music.
- c) Volume control: press **【VOL】** button and the volume icon  will turn to red, then press **⏮** or **⏭** button to adjust the volume down or up.
- d) Fast-backward and fast-forward: in Playback mode, press and hold **⏮** or **⏭** button for fast-backward/ fast-forward.
- e) Repeat mode: short press **【MENU】** button to enter submenu, press **⏮** and **⏭** button to

choose "Repeat mode" and short press 【Play】 button to enter, short press ⏪ or ⏩ button to choose your desired repeat mode, then press 【Play】 button to save the setting and short press 【MENU】 button to exit.

- f) Lyric display: when the player detects lyric files with the same title as the song currently being played, the player will directly enter the lyric display interface;

**Useful tips:** In any submenu, short press 【MENU】 button to exit the current menu.

- **Replay mode**

- 1) When music is playing, long press 【VOL】 button to confirm the starting point A:



- 2) Long press 【VOL】 button again to confirm the ending point B, now the player automatically starts to play the A-B segment. Long press VOL button to cancel the A-B segment setting.

- **Equalizer**

1. When the player is playing music;
2. Short press MENU button to enter the playback sub-menu;
3. Press 【NEXT】 button to choose “Equalizer” mode option;
4. Short press 【Play】 button to enter and choose your desired EQ mode, then confirm your choice by short pressing the 【Play】 button.
- 5.

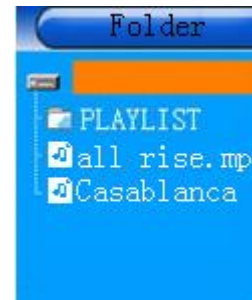
- **Play Rate**

1. Under the submenu, press “◀◀” or “▶▶” button to select “Play Rate” mode, and then press 【Play】 to enter.
2. Press “◀◀” or “▶▶” button to select playing speed, and press 【Play】 to confirm.

**Note: Only MP4 format files have this function. WMA files are not supported by this function!**

- **Folder (File management)**

While in the music interface, short press 【MENU】 to enter the submenu, press ◀◀/ ▶▶ button to choose “Folder” option, and press 【Play】 button to enter. Now you can choose your favorite music for listening. While in the audio file list, short press [VOL] button to enter the interface of “Add to list”/ “Delete”, if you choose “Add to list” and press the 【Play】 button, it will add this song to My list.



- **Deleting music**

- 1) In music mode, short press **【MENU】** button to display the submenu. press **⏪/ ⏩** button to choose “Folder” option, and press **【Play】** button to enter.
- 2) Press **⏪** or **⏩** button to chose the file you need to delete, short press **【VOL】** button to enter the deleting interface;  
Press **⏪** or **⏩** button to select “Delete” option and short press **【Play】** button to enter. Select “Yes” and short press **【Play】** button to confirm deleting the file or select “No” and short press **【Play】** button to cancel the deletion.

- **Classified**

You can select files according to the classification: Genre, artist, album, and title.

- **Play list**

User can set the playlist browser as they like, the player supports: My List, M3U, WPL and PLA.

## **Creating Playlists**

One of the best ways to access and use your music is to create playlists. A playlist is a collection of songs you group together for easy access. For example, you could create a dance playlist to consist of all your favorite dance songs. You could also create a list of Christmas songs, or mellow songs, or songs to jog with. When you load a playlist, your MP4 player will automatically play all the songs in that list, without you having to scroll through your entire collection.

**Keep in mind** - to create a playlist, all the songs you want to add to the list must already be loaded onto your player.

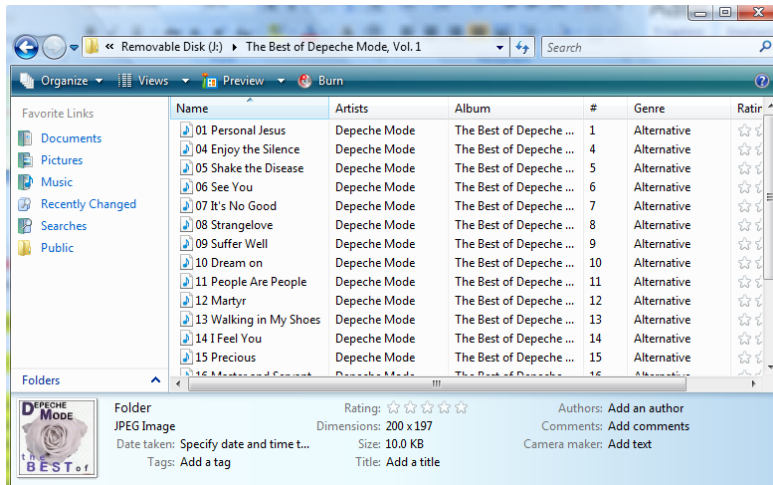
- **There are two ways to create playlist:**

- 1) Use the player to make playlist

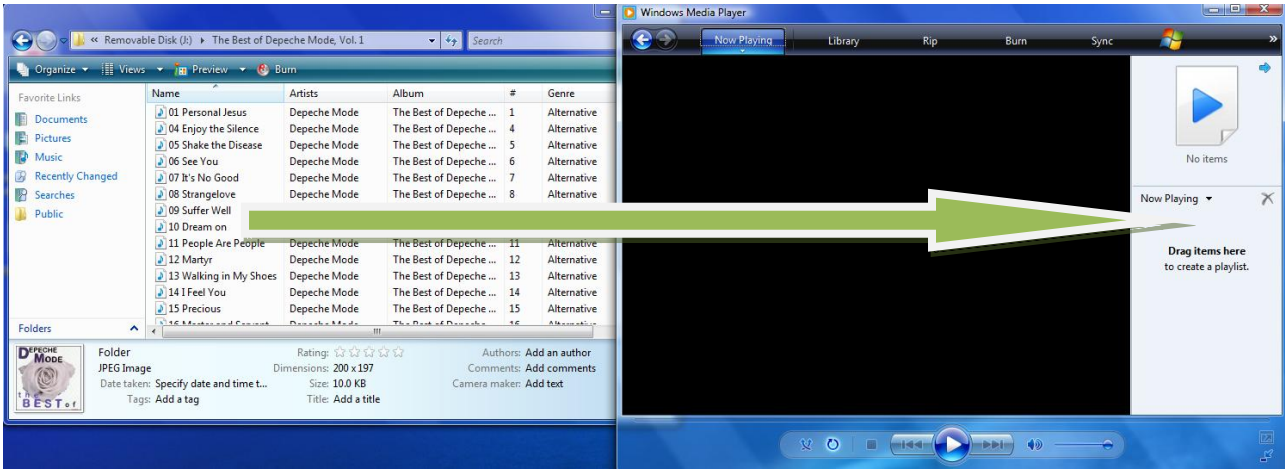
- a) In music mode, press **【MENU】** button to enter the sub menu. Select “Folder” option and press **【Play】** button to enter.
- b) Use **⏪** or **⏩** button to choose the song that you would like to put in your play list.
- c) Press **【VOL】** button and select “Add to list”. The song will be added to the “My list” in your playlist.

- 2) Use computer to create play list

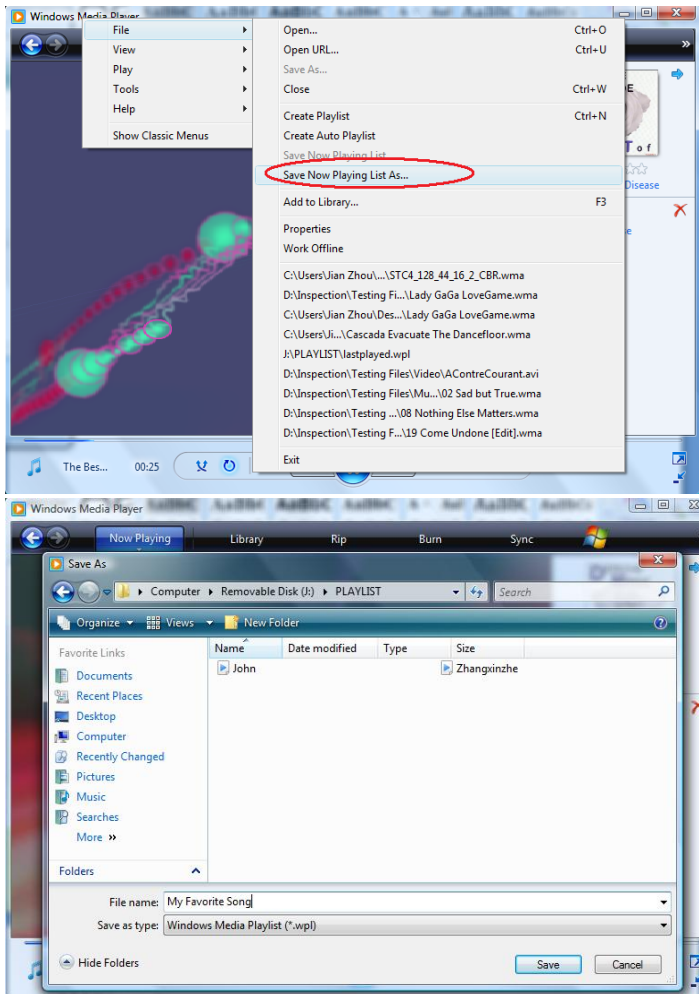
- a) Set up your MP4 player to MSC mode: Main menu --- Setup --- USB Mode --- MSC mode.
- b) Make sure your player is plugged into your computer via the USB cable.
- c) Open My Computer and locate the MP4 Player drive. Open the Music folder to view the music files you have loaded onto your player.
- d) Keep this window open, but make the window smaller so that it takes up only half your computer’s screen.



- e) Open Windows Media Player. Click on the Now Playing tab at the top of the program screen. If you do not see the “List pane” on the right side, click on the little arrow under the words “Now Playing” on the Now Playing tab and choose “Show List Pane”.
- f) Make this program smaller so that you see both Windows Media Player **AND** the window showing your music files.
- g) To create a new playlist, drag the files from the music window over to the List Pane in Windows Media Player. You can drag files one at a time or drag multiple files over. See the green arrow in the below picture.



- h) Once you have placed all the files into the playlist you are ready to save the playlist onto your MP4 player.
- i) At the top of Windows Media Player you will see the menu option “File”. If you have Windows Media Player 11, right-click just to the left of the Now Playing tab and you will see this option pop up. Choose File/Save Now Playing List As/ Name your playlist and save it onto your player in the PLAYLIST folder. Make sure you save it onto your player and not on your computer.



- j) Make sure it is saved in the PLAYLIST folder of your MP4 player. Once you have finished saving the playlist you can disconnect your player from the computer.



- **Playing Playlists**

- a) Turn on your player.
- b) From the main menu, choose the Music mode and press Menu.
- c) From the Music mode , press the **【MENU】** button again.
- d) Use the FORWARD button to scroll until “PLAYLIST” is highlighted. Press the **【Play】** button to enter "PLAYLIST".
- e) Use the FORWARD button to scroll until you highlight the playlist you want to play. Press the **【Play】** button to enter . You will see a list of the songs in your playlist.
- f) Use the FORWARD button to scroll until the first song in the list is highlighted (or any other song in the list) and press PLAY. Your player will begin playing all the songs in this playlist.
- g) Press and hold the Menu button to return to the main menu.

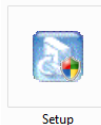
### 3.2.2 Video mode

- **Basic operation---Movie play**

- 1) Press **【MENU】** button to enter Video mode and access the file selection interface;
- 2) Press **▶/◀** button to choose the video file you want to play;
- 3) Press **【Play】** button again to start playing the video you choose;
- 4) In the video playing interface, long press **◀◀** button for fast-backward, short press **◀◀** button to enter the previous video file; long press **▶▶** button for fast-forward, short press **▶▶** button for the next video file;
- 5) Short press PLAY button to start playing or pause the video.
- 6) Volume control: short press VOL button to enter relative volume adjusting interface, then press **◀◀/▶▶** button to adjust the volume down or up.
- 7) In playback mode, long press **【MENU】** button to exit the current video.
- 8) Note: in video playing interface, short press MENU button to enter the repeat mode.
- 9) In video list, short press **【VOL】** button to enter the deleting interface.

- **Install Video Converter Software**

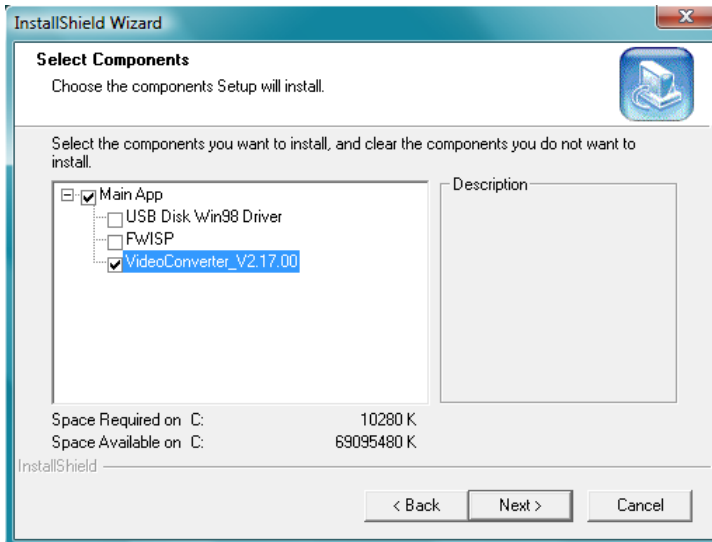
- 1) Insert the enclosed CD to your CD/DVD-ROM. Open the folder “MP4 Player TOOLS” and double click on the set up icon:



- 2) Follow the installation guide and click “Next” to proceed the installation.

**Note:** Window Vista user need to click “Allow” to continue.

- 3) The CD contains three parts and you only need to tick the VideoConverter\_V2.17.00 for installing the converter tool like below:



**Note:** “USB Disk Win98 Driver” is only for Windows 98SE users. “FWISP” is the firmware update tool. If the MP4 player is working properly, please DO NOT upgrade the firmware.

- 4) Click “Next” to continue the process and it may take several minutes.  
5) Click “Finish” to complete the installation.

- **Convert video file into MTV format**

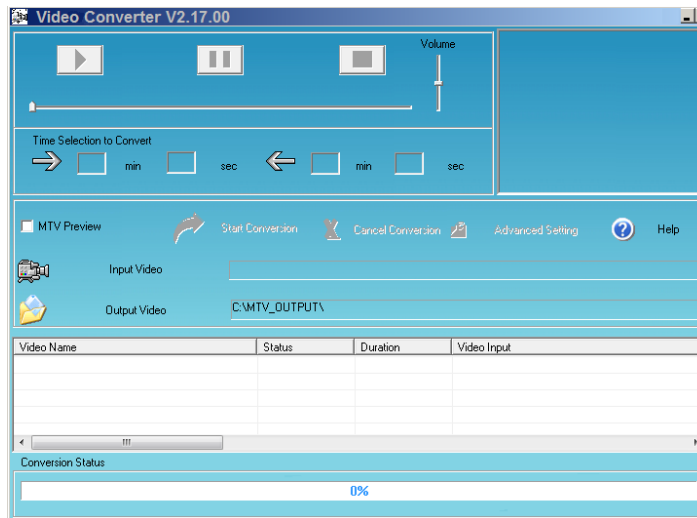
**Note:** The player only supports playing video files after they have been converted into MTV format by the **VIDEO Converter** software. Please follow the below steps:

### Supported video formats:

AVI (\*.avi), WMV (\*.wmv, \*.asf), MPEG1 (\*.mpg), QuickTime (\*.mov, \*.qt), MPEG2 (\*.vob), RealMedia (\*.rm, \*.rmvb,...), MPEG4, 3GP (\*.3gp).

**Note:** The video converter is used to transform a video file to another video format file for playing it on your device.

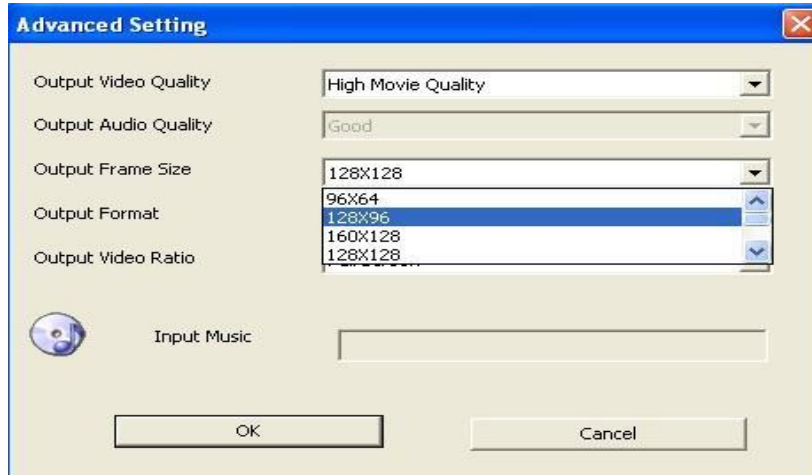
- 1) Click "Start --->All Programs ---> MP4 Player ---> VideoConvert" to start the convert software:



- 2) Click "Input Video" to choose the video file you are to convert.

**Note:** Your computer must have the decoding software installed that can play your desired video, then you can use the converter software to convert the current format to MTV format. If not, the upload will fail and a window will pop up with the downloading instruction of required decoding software.

3) Select the output frame size in "Advanced Setting"



4) Click "Start Conversion" to start the format conversion.

**Note:** Please select the suitable "output frame size" according the display size to convert files, otherwise it will affect the playing effect.

“√” means support playing.

“X” means do not support playing.

“※” means this size is most suitable to corresponding LCD size player to get the best playing effect.

Video lattice Display	1.1 inch	1.5 inch	1.8 inch	2.2 inch	2.4 inch
96x 64	※	√	√	√	√
128x 96	x	√	√	√	√
160x128	x	x	※	√	√
128x128	x	※	√	√	√
176x144	x	x	x	√	√
160x112	x	x	√	√	√
208x176	x	x	x	※	√
320x240	x	x	x	x	※

### 3.2.3 Photo mode

Supports photo browsing in popular graphic formats: .JPG and .BMP.

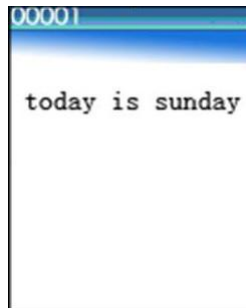
- Select “Photo” option and short press **【MENU】** button to enter the photo mode, then press **▶▶/◀◀** button to select the desired picture for viewing;
- Short press **【Play】** button to enter the interface of photo browsing, press **▶▶/◀◀** button to move to the next or previous photo;
- Short press **【MENU】** button to exit.
- in photo list, short press **【VOL】** button to enter the deleting interface

**Note:** In Photo mode, short pressing the **【Play】** button will start the slide show of pictures.



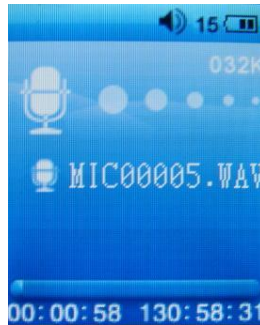
### 3.2.4 E-Book mode

- 1) Select "E-Book" option and short press **【MENU】** button to enter E-Book mode, then press **▶▶/◀◀** button to select your desired TEXT files; (.TXT)
- 2) Short press **【Play】** button to access the desired TEXT reading interface;
- 3) Press **▶▶/◀◀** button to scroll down and up
- 4) Short press **【Play】** button to start the slide show of pictures
- 5) Short press **【MENU】** button to exit the current file.
- 6) In e-book list, short press **【VOL】** button to enter the deleting interface



### 3.2.5 Record mode

In the main menu, select “Record” and short press **【MENU】** button to enter the Record mode, the player will start recording automatically.



- 1) Pause recording: Short press **【Play】** button to pause recording;
- 2) Finish recording: Short press **【MENU】** button to save the recorded file and exit,
- 3) Play voice recording file: For detailed instructions, please refer to the below section “Playing voice recording files”.



### 3.2.6 Voice mode

- 1) In the main menu, choose “Voice” mode and short press **【MENU】** button to enter, then press **【Play】** button to start playing voice recording files, short press **⏮/⏭** button moves to the previous or the next file.
- 2) When the player is playing a voice recording file, short press **【MENU】** button to choose “Folder”. Then press **【Play】** button to enter. Press **【MENU】** button to return to previous menu, Short press **⏮/⏭** button to choose MIC folder or FM folder. (FM recording files will be saved in the folder named FMIN.DIR, MIC recording files will be saved in the folder named MICIN.DIR).
- 3) In MIC or FM list, short press **【VOL】** button to enter the deleting interface.
- 4) Volume control: first short press VOL button to enter the relative volume adjusting interface, and press **⏮/⏭** button to adjust volume up and down.

### 3.2.7 FM radio

Note: plug into earphone to listen to the radio. The headset will work as antenna.

- 1) Press **⏮** or **⏭** button to choose FM mode, short press **【MENU】** button to enter this option.



- 2) In Normal radio mode, press **⏮/⏭** button for radio tuning; press **【Play】** button to switch from **Normal** radio mode to **Preset** radio mode:

- a. **Save stations:** in **Normal** radio mode, short press **【MENU】** button and the window below will pop up, select “Save Preset”, then short press **【Play】** button for storage of the currently received station.



- b. **AUTO SCAN:** in **Normal** radio mode, short press **【MENU】** button and the window above will pop up, press **⏪** or **⏩** button to choose “Auto Scan”. Then short press **【Play】** button to start scanning channels automatically and save the stations received. The player can save up to 30 radio stations.

**Note:** The player will be switched to **Preset** radio mode after Auto Scan. You can press **【Play】** button to switch back **Normal** radio mode.

- c. **Manual SCAN:** in normal radio mode, short press **⏪** or **⏩** button to search channels manually.

- d. **Delete:** In **Preset** radio mode, short press **【MENU】** button and the window below will pop up. Select “Delete”, then short press **【Play】** button to delete the current radio station.

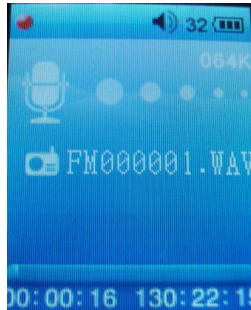


- e. If you want to exit Radio mode, you can press and hold **【MENU】** button for 2 seconds.

- **FM radio recording**

- 1) The player supports FM radio recording function. While listening to a radio program, you can record and save the currently broadcasting program. For operation method, please follow below steps:
- 2) In FM mode, short press **【MENU】** button to enter the submenu. Select “Record” and press **【Play】** button to start recording and the screen will then display as below:

- 3) Pause: short press 【Play】 button to pause recording;



- 4) After recording is finished, short press MENU button and the system will automatically save the recorded program;
- 5) To play FM recorded files please refer to the operation steps for playing voice recording files in the last section.

### 3.2.8 Setup mode

You can set the system parameters in this mode:

From the main menu, press ►/◄ button to choose “Setup”, then short press 【MENU】 button to enter the “Setup” interface.



- **USB Mode**

Please refer to Chapter 5 DRM Functions Operation.

- **Power Saving**

Auto power-off timer: The user can set the length of inactivity time in minutes before the player turns off automatically. The inactivity time can be set from 15 to 120minutes, or you can choose "Close". Press **【Play】** button to enter the setting option, then press **⏪** or **⏩** button to choose minutes, press **【Play】** button again to confirm the setting and exit.

- **Language**

Available languages including: Danish, Dutch, English, French, German, Italian, Spanish and others.

- 1) Enter the Setup mode;
- 2) Press **⏩/⏪** button to choose "Language" option;
- 3) Press **【Play】** button to enter this option;
- 4) Press **⏩/⏪** button to choose the desired language;  
Press **【Play】** button to confirm your selection and exit.

- **Display**

Enter the Setup mode, and choose Display option. You can set up "Backlight time" and "Brightness" here. Press **【Play】** button enter "Display" option. Now press **⏪** or **⏩** button to choose either "Backlight time" or "Brightness".

You can set the backlight time at 15 seconds, 30 seconds, 1 minute or close, short press the **【Play】** button to confirm your setting and exit.

**TIP:** For longer battery life/Play time, choose 15 sec.

You can set the brightness from Low, Medium, High and Maximum.

**TIP:** For longer screen life/play time, choose Medium or Low setting.

- **Sys tools**

Enter the Setup mode, press ►/◄ button to choose "Sys tools" option, which includes: Format, Reset, and Sys Info:

- a. Format: short press **【Play】** button to enter, then press ►/◄ button to choose quick format or complete format, press **【Play】** button again to enter, press ►/◄ button to choose "Yes" or "No" to format the player, press **【Play】** button to confirm your selection.
- b. Reset: the player will be set up to the default setting.
- c. Sys Info: short press **【Play】** button to enter.

**NOTE:** If you choose to format your Player, you will delete/lose all data on the Player. Make sure you have back-up elsewhere before formatting.

### 3.3 USB removable disk

The player can be used as a removable USB drive, with the simple function of a computer hard disk; you can transfer, copy, paste and delete files directly.

- ▲ When you are not using the player for long periods of time, please do not connect it with your PC for a long period.
- ▲ Turn on the player and enter Setup mode. Select USB Mode by short press **【Play】** button and select "MSC mode", press **【Play】** button again to confirm and exit. Connect the player to your PC. Now the player has the function of a computer USB drive, and can support functions such as download, copy, delete, and so on. The screen will be like below:



- 1) Do not unplug the player from the PC during transfer of MP4, WMA audio files. Doing so can cause damage to the MP4 player.
- 2) Directly copy and paste song files with standard MP4 or WMA format to the removable disk.
- 3) You can also drag and drop files to the removable disk. Left click & hold the file icon and pull it into the removable disk folder. Release the icon, then the file will be transferred into the MP4 player.

- ▲ While transferring data, only after the screen displays normal connection image can you perform other operations.
- ▲ If the Player fails to work due to unexpected errors, please cut off the power source, then power on again after 3 seconds, and connect the player to the PC again.
- ▲ The player supports MP4, WMA music files and WAV format recording files. If you want to save files with other formats in the player, it is better to build a new folder under the removable disk, and save these files in the new folder.
- ▲ If music files are not in MP4 or WMA format, then you need to use other tools to convert these files into the MP4 or WMA, then transfer these converted files to the MP4 player.

- **Linking with PC**

For operating system version of Windows98 SE or below, please make sure to install the driver first, then connect the player to your PC, for operation please follow below steps:

- 1) If it is your first time to connect the player to PC, Windows will check the new device automatically;
- 2) After being connected, the player enters into USB mode and the screen displays as below:





- 3) You will find a removable disk in "My Computer", the displayed disk icon will be separated by a different hard disk partition.
- 4) During the data transfer between the PC and this player, you should not perform other operations. The interface displays as above figure.

- **Considerations**

- 1) While connecting the player to the PC, if the connection is not successful or data transfer is cut off unexpectedly, please first check the two points listed below:
  - a. Check if the USB connection is secure, first safely unplug the player from PC, and connect the player to PC again.
  - b. Check if there is a malfunction with the PC; try the operation on another PC for testing purpose (the operating system should be WIN2000 or WIN XP).
- 2) After connecting the player to the PC, if the computer gets stark or works unnormal, the data in the player maybe lost. So please ensure the status of the computer is good before connecting your player to your PC.

## Chapter 4 Format MP4 Player

Connect the player with your PC, since formatting will clear all the songs, recordings and data files on the MP4 player, so be sure to backup important data before formatting the player.

1. The PC provides formatting software that properly formats the player. Formatting your player requires the same steps as that for formatting the computer harddisk. (In the File System pop-up menu, select FAT or FAT32 format. **DO NOT** select NTFS or any other formats, because the MP4 player will not operate properly.
2. You can also format the player by the player itself, choose from main menu—Setup—Sys tools—Format.

## Chapter 5 DRM Functions Operation

### 1. OS Requirements

OS requirements: Windows XP with Service Pack 1 installed, Windows Vista or above, Windows Media Player 10.3646 (**abbreviated as WMP10**) or above.

### 2. Downloading Songs

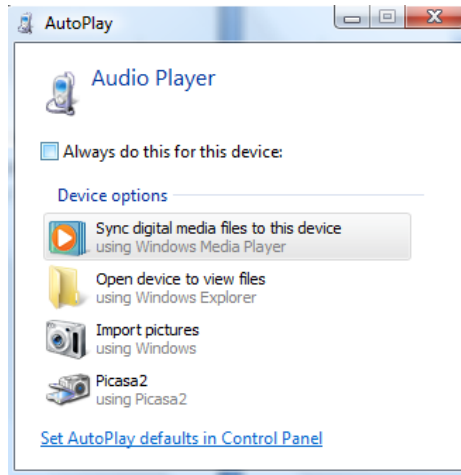
WMP10 download: WMP10 uses MTP (Media Transfer Protocol) to download copyright-obsessed songs, it cannot support MTP protocol's USB device (hereafter abbreviated as MTP devices). Although songs may be cut or copied and pasted through USB protocol, the license will not be transferred.

#### **NOTE:**

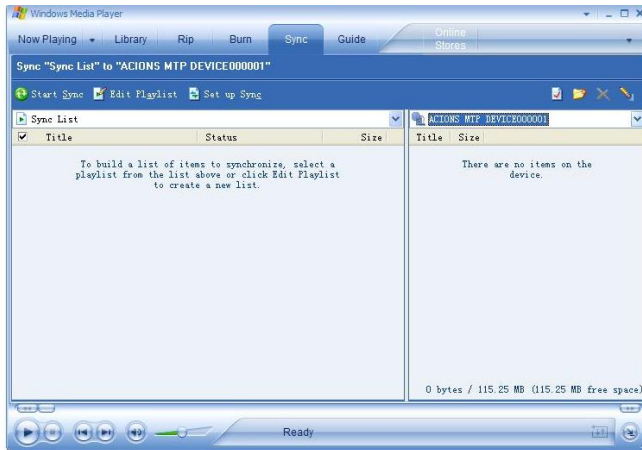
1. MTP device can only be applicable in Windows XP or above OS. Win98/2000 OS does not support DRM format.
2. Copying songs directly by U-disk: Same as downloading songs to none-MTP devices.

### **MP4 DRM songs downloading process**

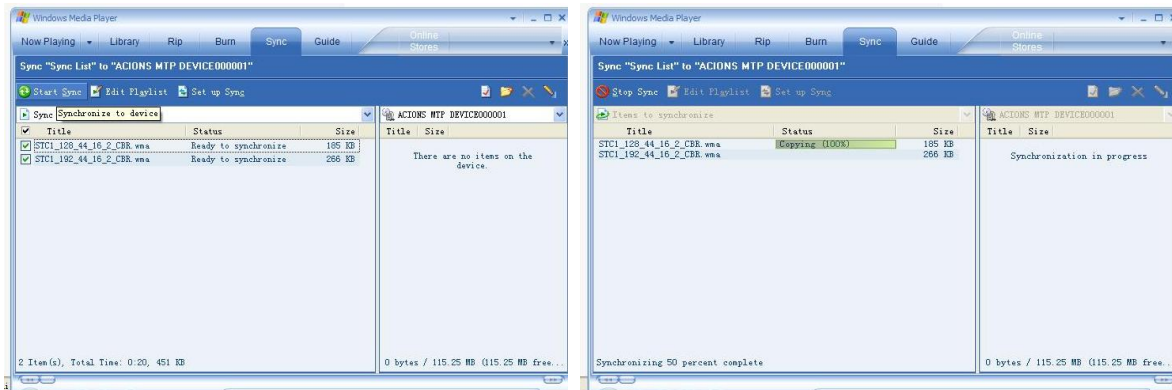
1. Set up the MP4 player to be MSC device: Main menu --- Setup --- USB Mode --- MTP mode
2. Connect the MP4 player with PC. PC will automatically detect the connection and recognize device as MTP device. Windows will prompt asking what action to take - select either "Synchronize the media file with this device" or "Take no action".



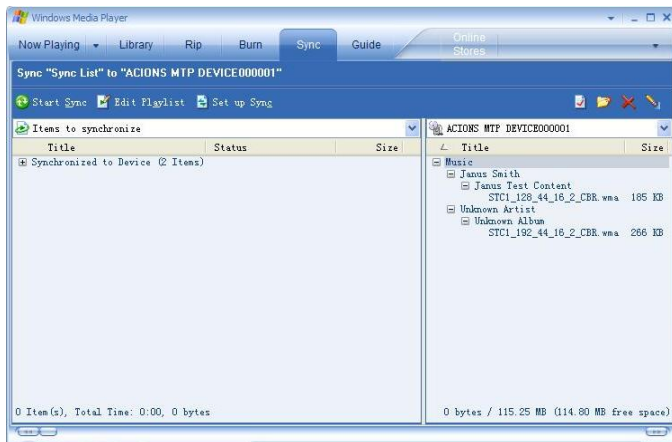
3. Choose “Sync digital media files to this device”, Window Media Player will be started automatically. Choose the “Sync” option. Note: In Media Device condition and under the Media directory, lyric files cannot be copied.



4. Select the downloaded DRM file, then drag and drop the desired songs to the corresponding file area in the left side.
5. Click "Start Sync"; WMP10 begins to synchronize.



6. After synchronizing, you can see the synchronized songs in the right side.



7. Disconnect MP4 player from the USB port. The player begins to create ID3 Playlist and deal with the DRM license. This will take approximately 10 seconds to complete then the player will return to the Main menu after completion. Select Music to play the newly synchronized music.

## Chapter 6 References to User

### 6.1 Trouble-shooting

The player cannot be started.	Please make sure the player is turned on.
No sound heard from the earphone.	Please make sure the volume is not at "0" and earphone connection is secure; Please make sure the earphone plug is clean; Check whether the music file is corrupted, since corrupted music files will cause noise or even cannot play, please make sure of the entity of the music file.
Unrecognizable codes on the display screen	Make sure you choose the right language;
Cannot download file	Check whether the USB cable is damaged, and secure the connection between the player and PC. Check whether the driver is well installed. Check whether there is vacant memory.
FM reception is not good	Move the earphone or the player to different place as the earphone can be used as an antenna. Turn off the electronic devices nearby
No file but occupy certain memory capacity	Check if there are hidden files saved in the player. Format the player. (File system is FAT or FAT 32)
The player's real capacity is smaller than the labeled capacity.	Because the player's internal software and also FLASH bad block occupy a little space of the capacity, so the real capacity is smaller than the labeled capacity.

## 6.2 Specifications

Display screen	1.8' (128*160) color display screen	
USB specification	USB2.0 High Speed	
Memory	8GB	
Power Source	Support 4-5 hrs music playing time, and 2hrs video playing time.	
Record	Sampling rate	8KHz
	Record format	WAV
MP4, WMA	Headphone maximum output	(L)10mW + (R) 10mW (32Ohm)
	MP4 bit rate	8K bps – 320K bps
	WMA bit rate	5K bps – 384K bps
	Frequency response	20Hz~20KHz
	SNR	60dB
	Distortion rate	<0.1%
FM Radio (optional)	Reception frequency range	87MHz – 108MHz
	Headphone maximum output	(L)10mW+ (R) 10mW (32Ohm)
	SNR	45dB
Music format	MP4, WMA	
Video format	MTV	
Support E-BOOK format	TXT	
Image format	JPGE , BMP	
Support operating temperature	-10°C to 40°C	
Language	English, Simplified Chinese, Dutch, French, German, Italian, Spanish etc.	
Support operating system	Windows2000/XP/Vista, MAC10.x	



## 6.3 Disposal



Electrical and electronic equipment (EEE) contains materials, parts and substances, which can be dangerous to the environment and harmful to human health if waste of electrical and electronic equipment (WEEE) is not disposed of correctly.

Equipment, which is marked with the WEEE logo (as shown on the left), should not be thrown away with your household waste. Contact your Local Authority Waste Disposal Department, as they will be able to provide details of the recycling options available in your area.