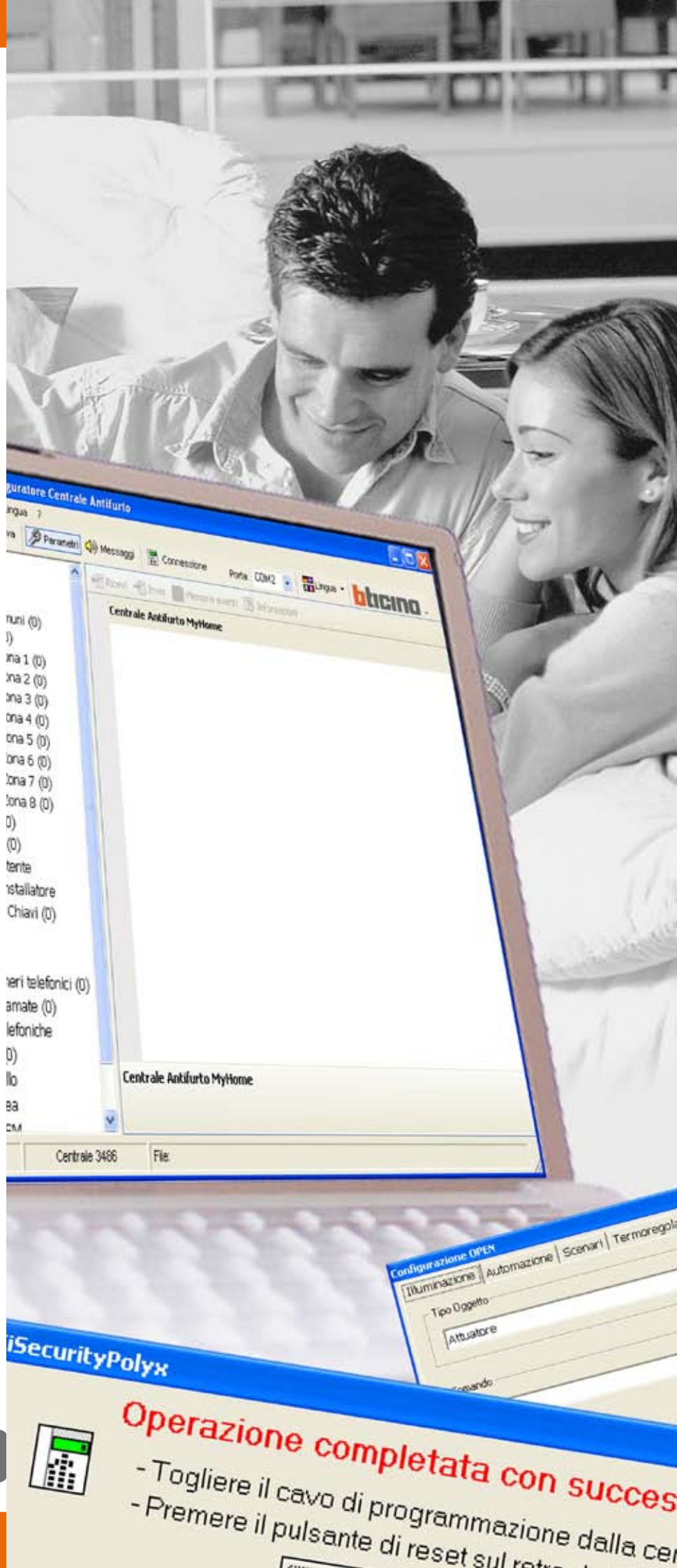


TiSecurityPolyx user manual

Software for the configuration of the 3485 Burglar Alarm Unit



Operazione completata con successo

- Togliere il cavo di programmazione dalla centrale
- Premere il pulsante di reset sul retro della centrale

CONTENTS

1. Hardware and Software requirements	4
2. Installation	4
3. Basic concepts	8
3.1 Menus and general buttons for selecting functions	
4. Importing data from an existing project	11
4.1 Importing voice messages	
4.2 Importing configuration data	
5. Connecting to the Unit	13
6. Exchanging data with the Unit	15
7. Parameters	16
7.1 Work area	
7.1.1 Data input procedure	
7.2 Exchanging configuration parameters with the Unit	
7.2.1 Receiving configuration parameters	
7.2.2 Sending configuration parameters	
7.2.3 Receiving the history of events	
7.3 Configuration of the Burglar alarm section	
7.3.1 Zones	
7.3.2 Automations	
7.3.3 User Preferences	
7.3.4 Installer Preferences	
7.3.5 Key management	
7.3.6 Scenarios	
7.4 Configuration of the Dialling device section	
7.4.1 Telephone number directory	
7.4.2 Setting up calls	
7.4.3 Telephone functions	
7.4.4 Block (Lock)	
7.4.5 Protocol - MyHome Portal	
7.4.6 Protocol - ADEMCO	
7.4.7 Line test	
7.4.8 Telephone commands	
8. Messages	50
8.1 Work area	
8.2 Exchanging voice messages with the Unit	
8.2.1 Sending voice messages	
8.2.2 Listening to messages from the Unit loudspeaker	
8.2.3 Receiving voice messages	
8.3 Voice message commands	
8.3.1 Importing an audio file	
8.3.2 Emitting a voice message	
8.3.3 Recording a voice message	
8.3.4 Retrieving voice messages	
9. Update Firmware	54

1. Hardware and Software requirements



Please note: The TiSecurity-Polyx program is the essential tool for the configuration of the 3485 Burglar alarm Unit. The content of this program is under the exclusive rights of Bticino SpA.

Hardware requirements

- Personal Computer with Pentium processor >400 MHz
- 256 MB RAM
- SVGA graphics card with resolution 800x600
- CD-ROM unit
- Mouse

Software requirements

- Windows 2000, XP or Vista; Internet Explorer 6.0 or higher.

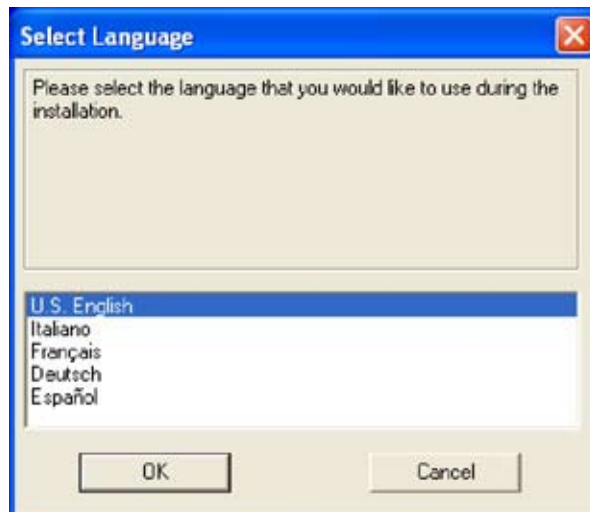
Space used on hard-disk

- 91 Mbyte.

2. Installation

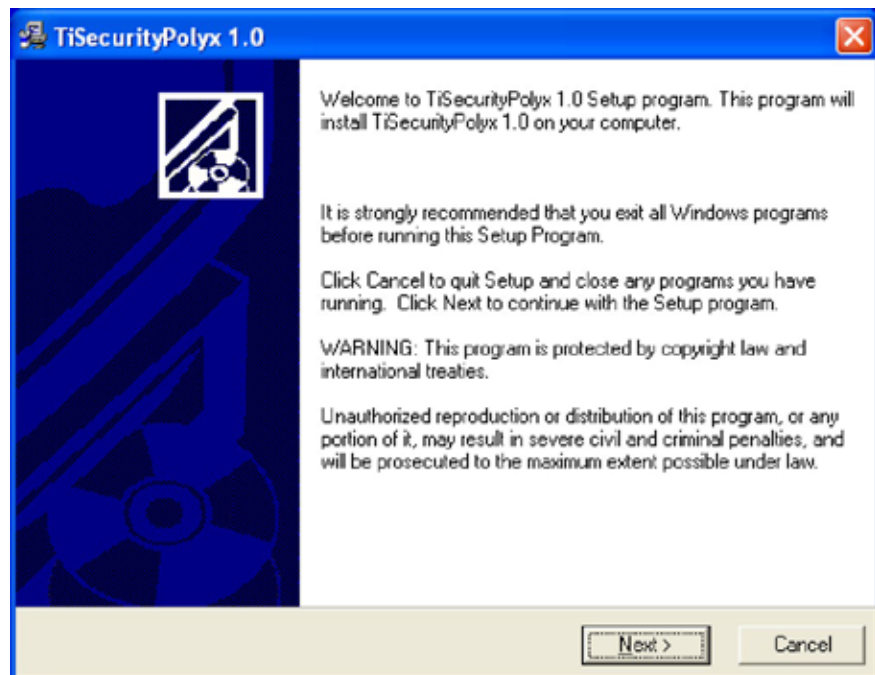
Follow this procedure to install the TiSecurityPolyx program:

1. Insert the CD-ROM in the drive;
2. After displaying the main page in the web format, select "Install TiSecurityPolyx";
3. The installation program will now copy the system files necessary for the execution of the TiSecurityPolyx program.



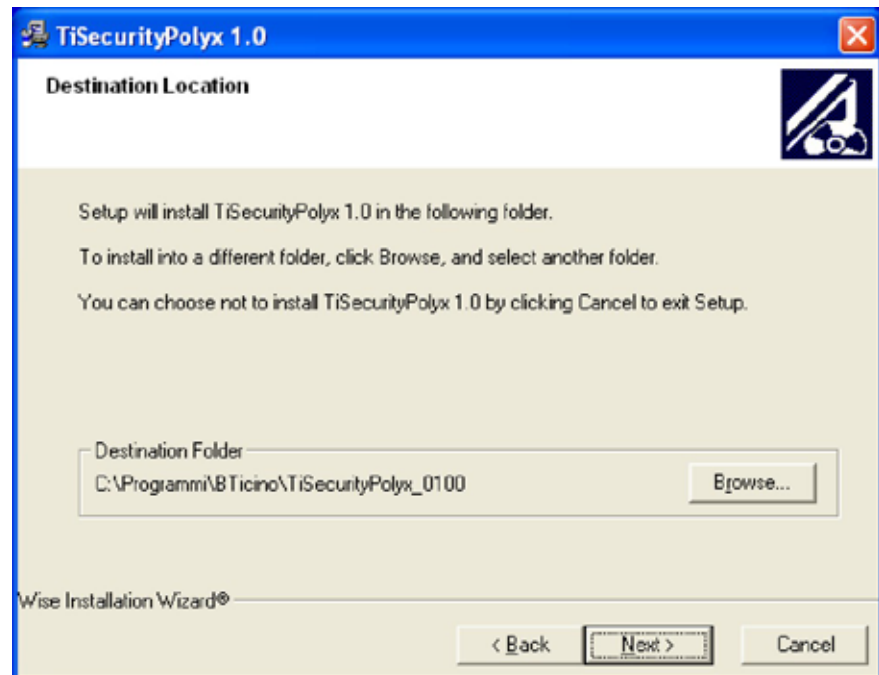
- > Select the installation kit language
- > Click the **Ok** button

The following screen will appear



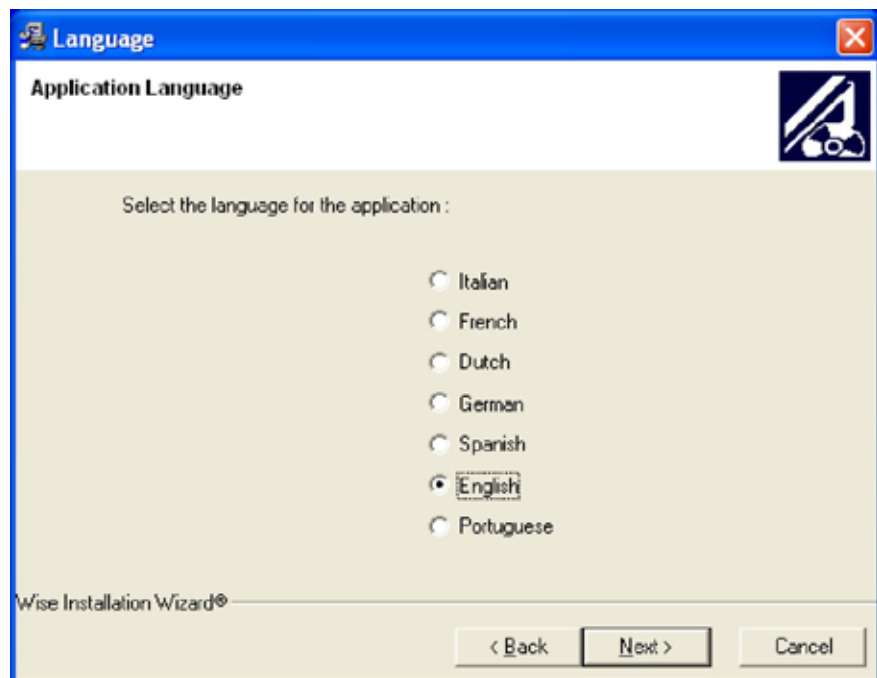
- > Click the **Next** button

The following screen will appear



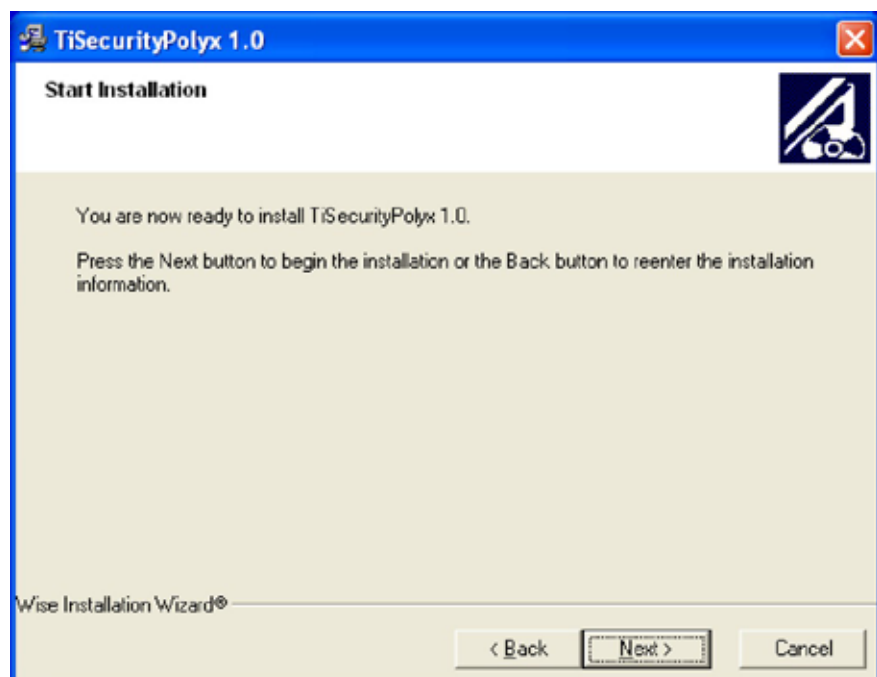
- > Click **Next** to install the program in the default directory
"C:\Programmi\BTicino\TiSecurityPolyx_0100"
- Or
- > Click **Browse** to select the required path

The following screen will appear



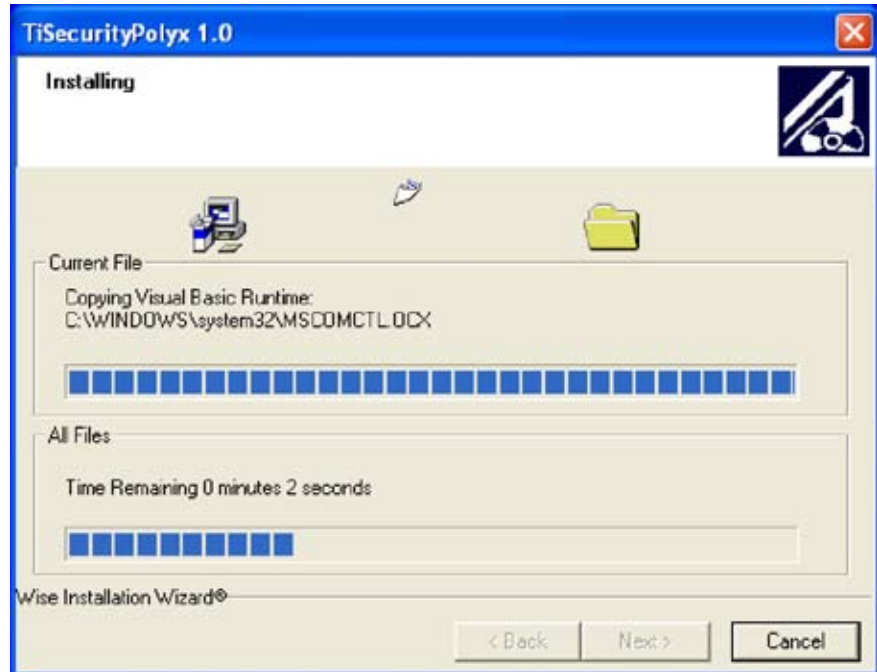
- > Select the TiSecurityPolyx interface language (The language can also be changed when using the application, without the need for reinstallation).
- > Click the **Next** button

The following screen will appear

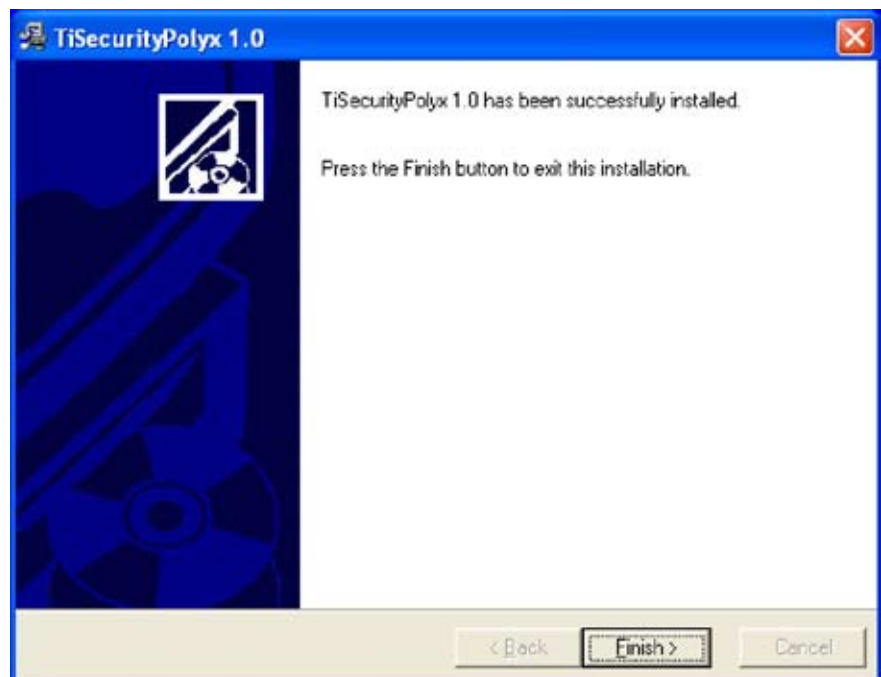


- > Click **Next** if you are ready to install TiSecurityPolyx
- Or
- > Click **Back** to return to the previous screen

The installation of the program will now begin.




Depending on the operating system setup in use, it may be necessary to restart the system.

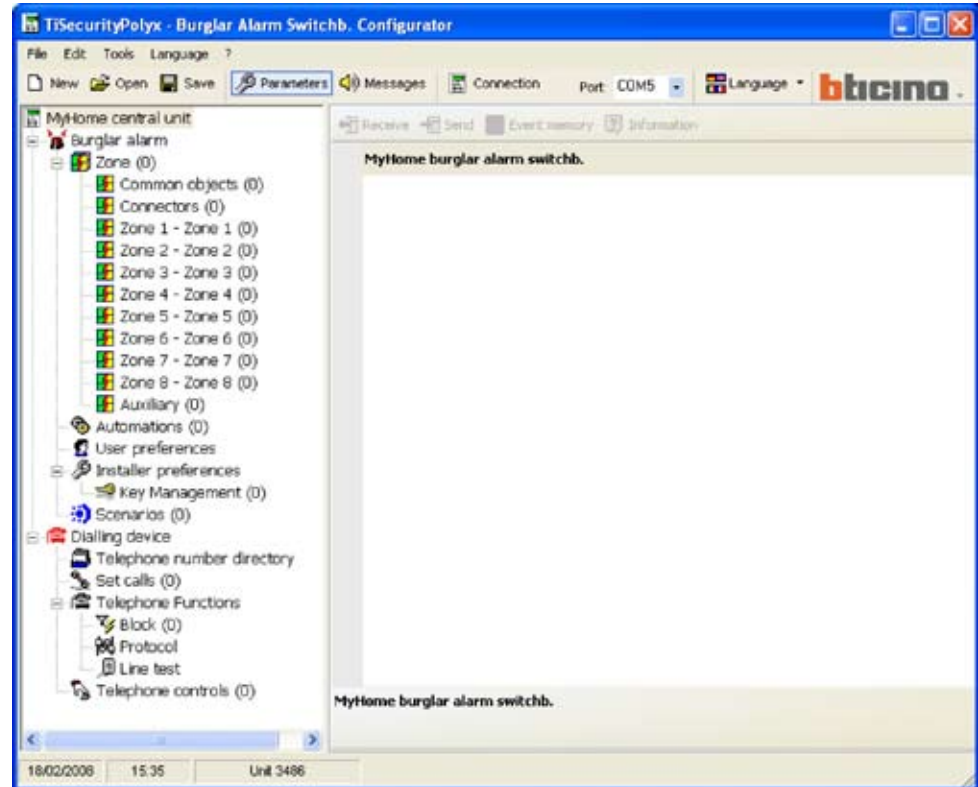


> Click **Finish** to end the process

3. Basic concepts

The TiSecurityPolyx software is used for the configuration of the 3485 Burglar alarm Unit which combine the burglar alarm and telephone dialling device into one device.
After opening the program, the following screen will appear:

 **Please note:** For proper functioning of the software, the 3485 Burglar Alarm Unit must be installed according to the indications specified in the installation manual supplied with the device.



Depending on the technician and user's needs, it is possible to begin with a new configuration or change an existing configuration.
In this manual the various screens will refer to the second mode.

Creating a new configuration:

- Start TiSecurityPolyx
- Execute and save the configuration
- Send data to the Unit

Modifying an existing configuration:

- Execute the system auto-learning function from the Unit
- Receive data from the Unit with TiSecurityPolyx
- Edit, if required
- Send data to the Unit

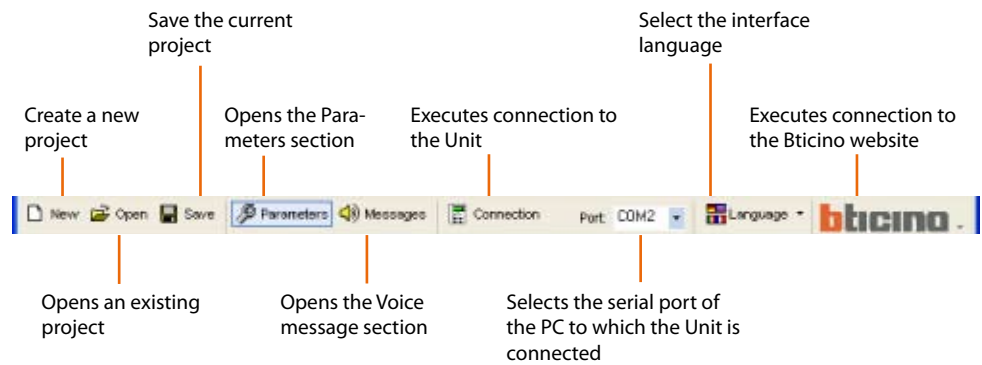
In order to perform a proper configuration, it is necessary to execute the system auto-learning function before connecting the Unit to the PC.
Using the **Firmware Update** function, with the TiSecurityPolyx it is also possible to update the permanent Control Unit Software, using new issues published by BTicino.

3.1 Menus and general buttons for selecting functions

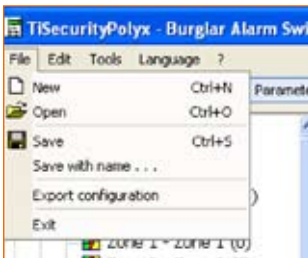
The main functions that can be executed with TiSecurityPolyx can be selected by using the icons in the toolbar or by opening drop-down menus, thus selecting the various options. Quick keys can also be used for some functions, like:

to create a new project, it is possible to select **New** from the **File** drop-down menu, from the toolbar and from the keyboard by using the keys **Ctrl +N**.

The followings functions are included in the toolbar:

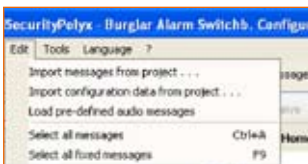


The followings functions are included in the drop-down menus:



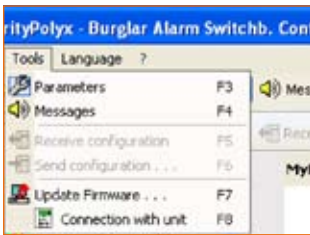
“File” menu

- **New** creates a new project
- **Open** opens an existing project
- **Save** saves the current project
- **Save as (with name)** saves the project after requesting a file name
- **Export configuration** exports the project thus creating a file with extension .csv which can be imported into Microsoft Excel®.
- **Exit** exits the program



“Edit” menu

- **Import messages from project** imports all voice messages from an existing project
- **Import configuration data from project** imports all configuration data from an existing project
- **Load pre-defined audio messages** retrieves voice messages set up for the Unit
- **Select all messages** selects all messages of the project
- **Select all fixed messages** selects all fixed messages of the project



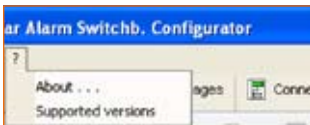
“Tools” menu

- **Parameters** opens the Parameters section
- **Messages** opens the Messages section
- **Receive configuration** receives the configuration from the Unit, it is active only when connecting to the Unit
- **Send configuration** sends the configuration to the Unit, it is active only when connecting to the Unit
- **Update Firmware** starts the Unit firmware update procedure
- **Connection to Unit** enables connection between the PC and the Unit



“Language” menu

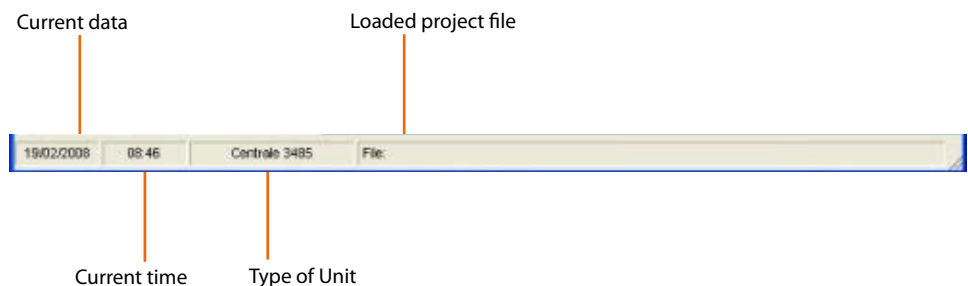
- select the TiSecurityPolyx interface language



“?” menu

- **About...** displays information on the TiSecurityPolyx program
- **Supported versions** displays information on TiSecurityPolyx, hardware and software versions of the Unit

The status bar shows the following information:



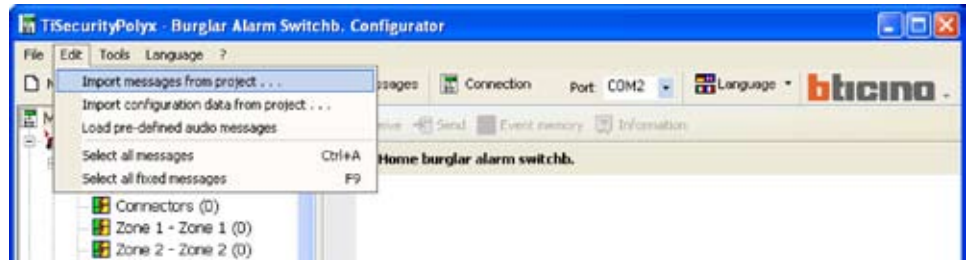
4. Importing data from an existing project

It is possible to import data (configuration parameters and voice messages) from a previously saved project file.

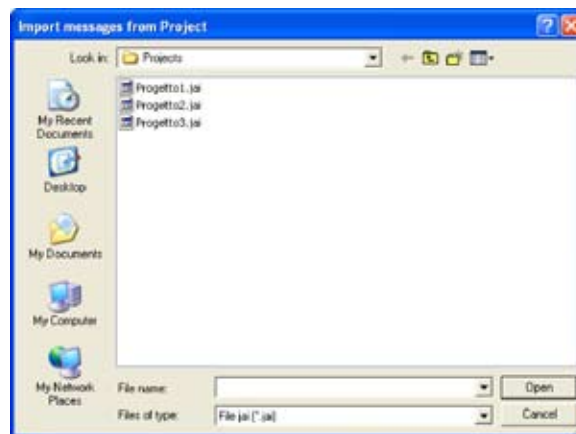
4.1 Importing voice messages

To import voice messages from a project file:

- > Select **Import messages from project** from the **Edit** menu



The following screen will appear

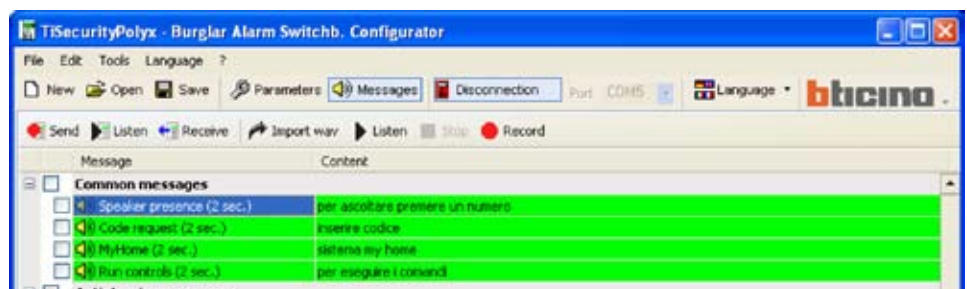


Please note: it is recommend to save the current configuration file of before starting the procedure.

- > Select the project file (.jai) from where you want to import the messages
- > Click the **Open** button



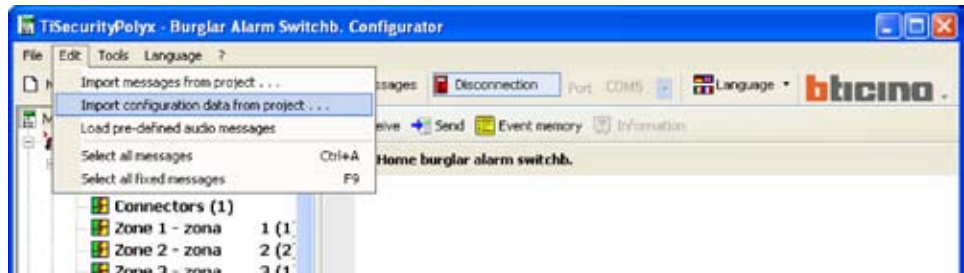
When the procedure has been completed, the imported messages will appear



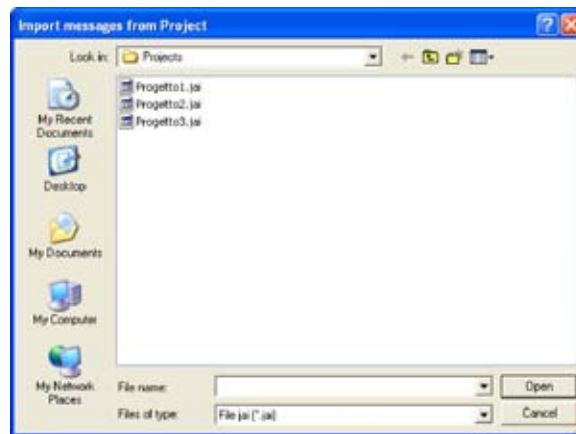
4.2 Importing configuration data

To import a previously saved configuration:

- > Select **Import configuration data from project** from the **Edit** menu



The following screen will appear

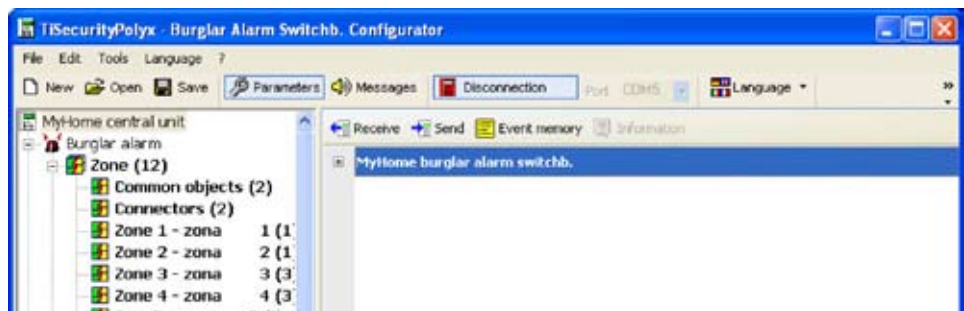


! Please note: it is recommend to save the current configuration file of before starting the procedure.

- > Select the project file (.jai) from where you want to import the configuration
- > Click the **Open** button



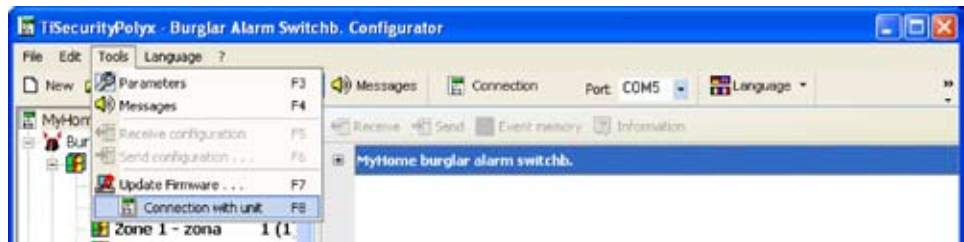
When the procedure has been completed, the new configuration will appear



5. Connecting to the Unit

To access some functions (e.g. Receive configuration, Send messages, etc.) there must be a connection between the PC where TiSecurityPolyx is installed and the Unit, following the operation described below.

- > From the **Port** menu, select the serial port address of the PC you want to connect the Unit to (COM1, COM2, etc.).
- > Select **Connection to Unit** from the **Tools** menu

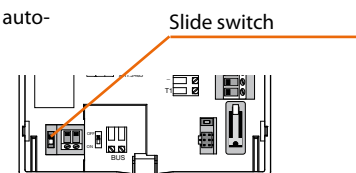
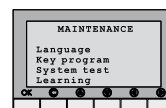


The following message will appear



- > Execute the required operations and then click **OK**

Select the maintenance menu of the Unit and start the auto-learning function

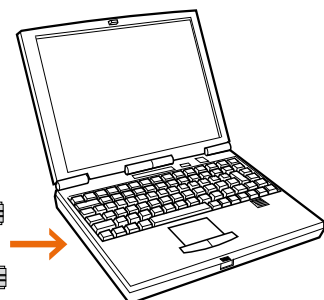
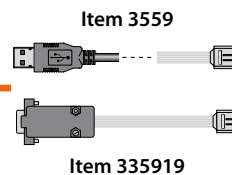
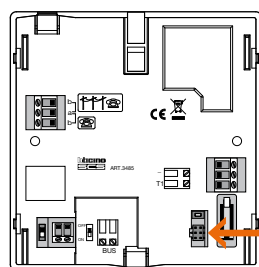


Flip the slide switch to **off**

Click the **OK** button

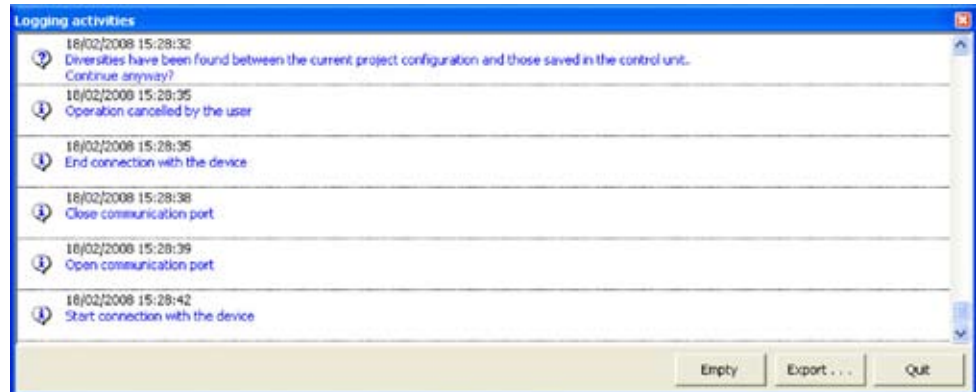


Connect the programming cable to a serial port or USB of the PC and to the 6-way connector of the Unit



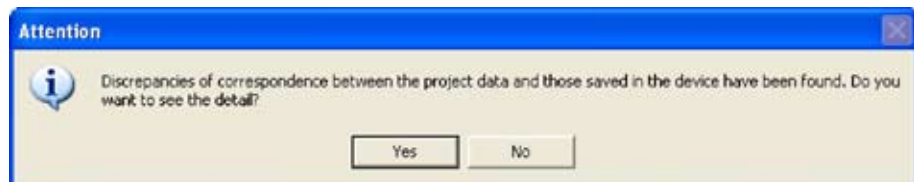


At this stage, by clicking the **Details** button, it is possible to display the list of communication activities between the personal computer and the unit.



When connecting to the Unit, a comparison will be made between the configuration of the Unit which reflects the real system, and the configuration of the current project.

If the configurations are different, the following warning message it will appear:

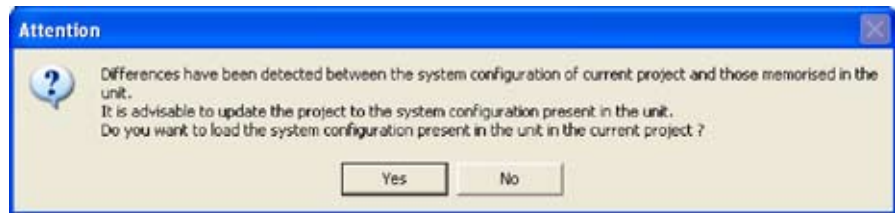


> Click **YES** to display the details of the differences found

Zone	Device	Parameter	Project value	Device value	Notes
Common objects	Internal siren 1	Presence of peripheral	present	not present	
Connectors	Peripheral 1	Type	Connector	Transponder reader	
Connectors	Peripheral 2	Presence of peripheral	present	not present	
Connectors	Peripheral 2	Type	Division	None	
Zone 1	Peripheral 1	Type	Contact interface	IR sensor	
Zone 2	Peripheral 1	Type	Contact interface	IR sensor	
Zone 2	Peripheral 2	Presence of peripheral	not present	present	
Zone 3	Peripheral 2	Presence of peripheral	present	not present	
Zone 3	Peripheral 2	Type	IR sensor	None	
Zone 3	Peripheral 3	Presence of peripheral	present	not present	
Zone 3	Peripheral 3	Type	IR sensor	None	
Zone 4	Peripheral 2	Type	Radio Receiver	Keypad with display	
Zone 4	Peripheral 3	Presence of peripheral	present	not present	
Zone 4	Peripheral 3	Type	IR sensor	None	

The data can be exported into a file with extension .csv, which can be imported in Microsoft Excel.

- > The following message will appear if click QUIT



- > Click **YES** to load the configuration of the system in the Unit
- > Click **NO** to keep the current project unchanged

However, there will be a connection to the Unit.

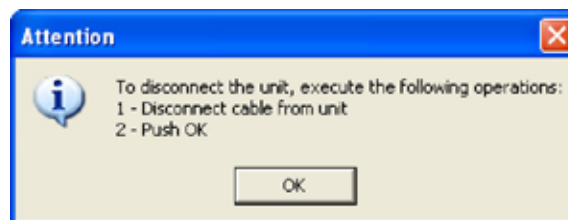
At the end of the procedure the **Connection** button will change into **Disconnection**.



It is now possible to swap data with the Unit

Click **Disconnection** to stop connection.

The following message will appear



- > Disconnect the programming cable from the Unit
- > Click the **OK** button

6. Exchanging data with the Unit

When the connection to the Unit has been activated, it will be possible to:

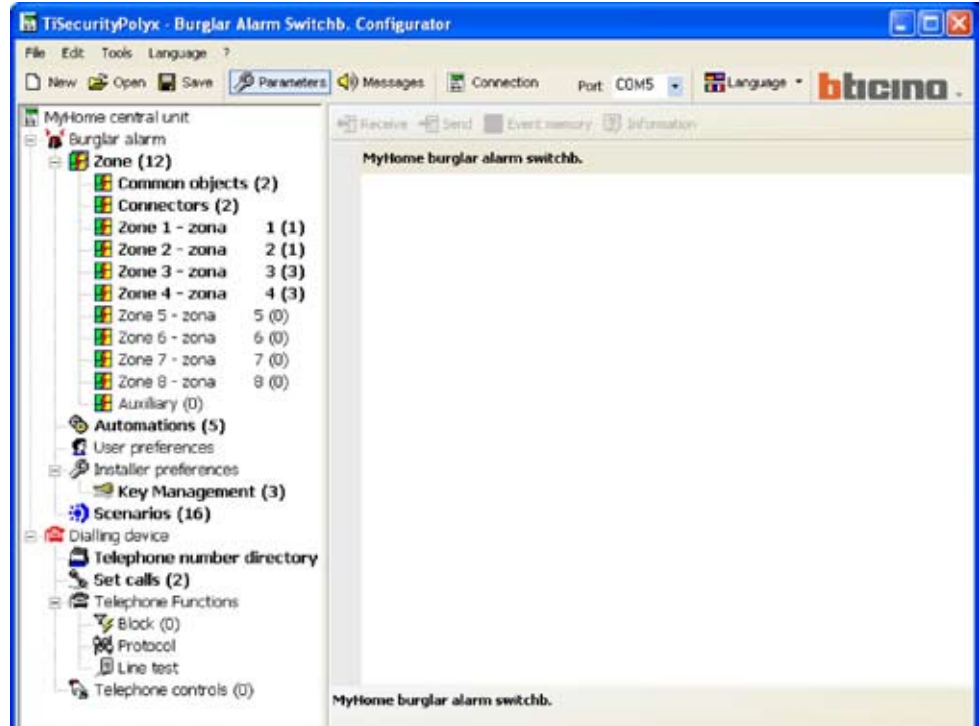
- Send/receive configuration parameters
- Send/receive voice messages
- Receive the history of events from the unit

Refer to paragraphs "7.2 Exchanging configuration parameters with the Unit" and "8.2 Exchanging voice messages with the Unit" to carry out these functions.

7. Parameters

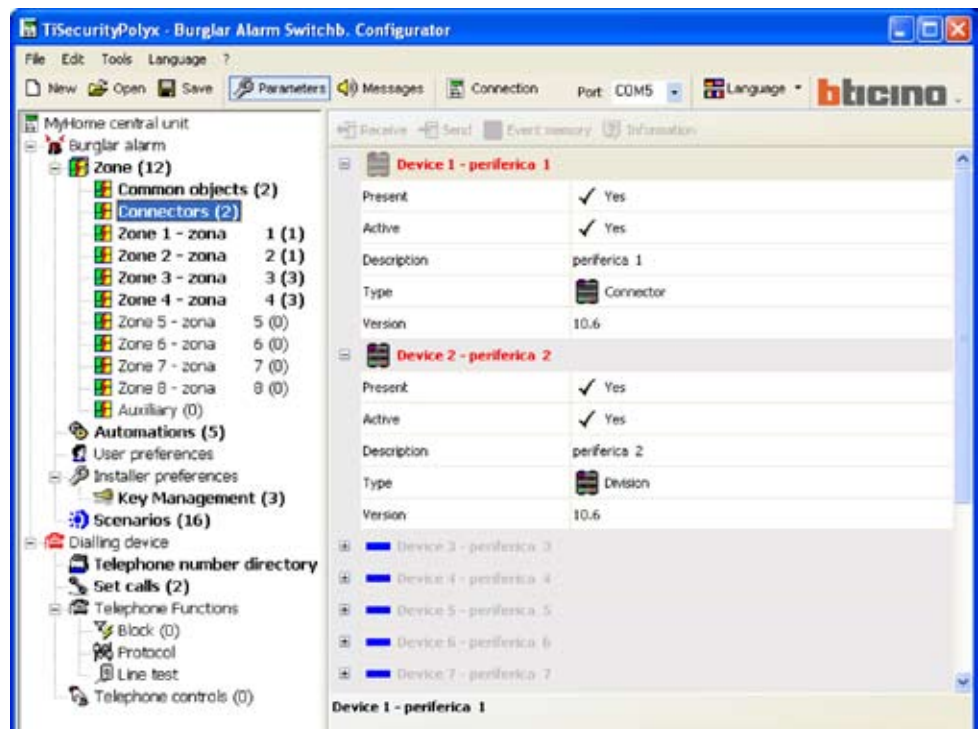
In this section it is possible to execute the Unit parameters configurations.

7.1 Work area

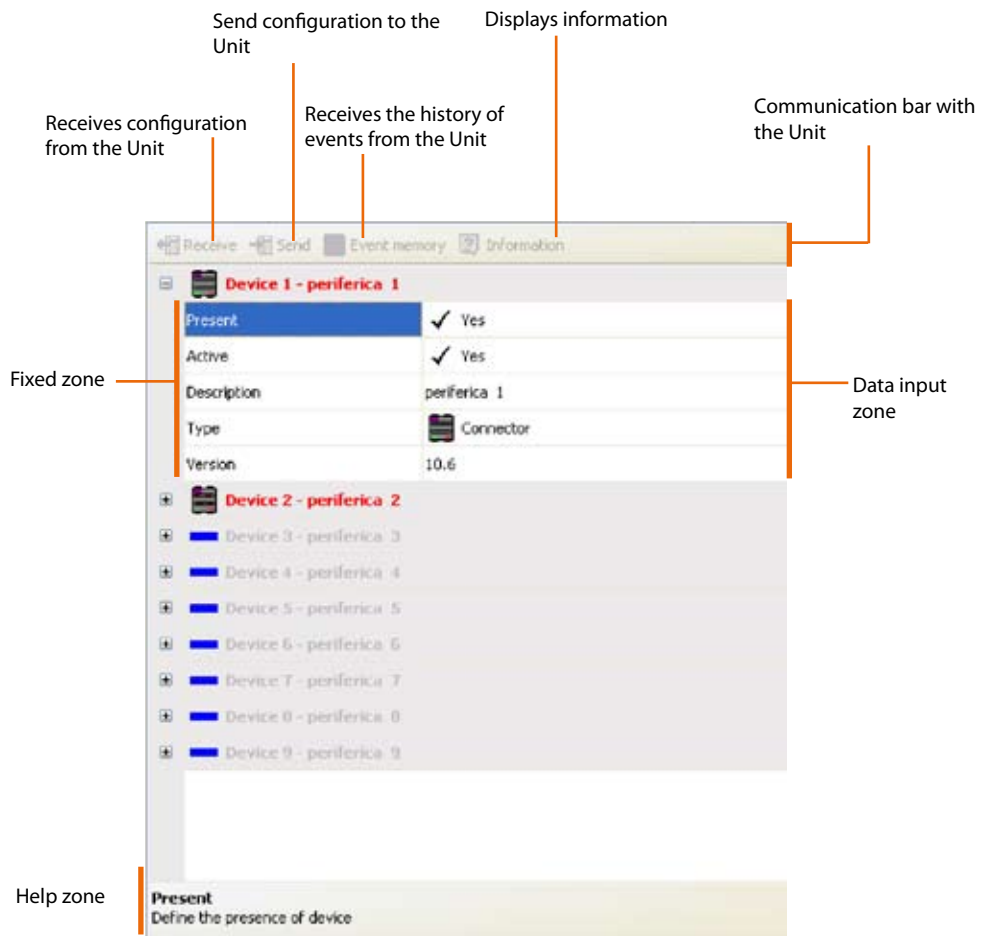


In this section all typical parameters for the configuration of the Unit are displayed, represented hierarchically with a tree structure on the left side.

On the right side, a specific template for inputting data and, if the connection is active, for communicating with the Unit can be displayed by selecting each element of the hierarchic structure.



Data input template



The upper bar includes the commands for communication with the control unit (only active when the connection with established PC); the central section is for data entry, and will vary depending of the selected parameter; the lower bar displays the instructions to guide the user through the data entry procedure.

7.1.1 Data input procedure



Inputting by typing in data:

- > Click the data input zone
- > The text, if any, will be edited (e.g. Input)
- > Type in new data




Inputting data with the drop-down menu:

- > Click the data input zone; the button will appear
- > A drop-down menu will appear after clicking the button
- > Select any data available




Inputting data with the sliding menu:

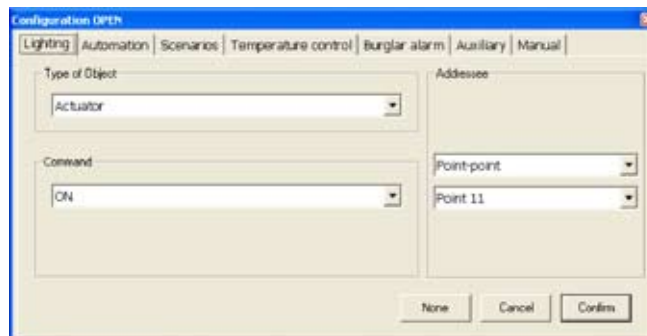


- > Click the data input zone; the  button will appear
- > Use the button to move through the available data

Inputting with an independent window:



- > Click the data input zone; the  button will appear
- > An independent window will appear after clicking the button



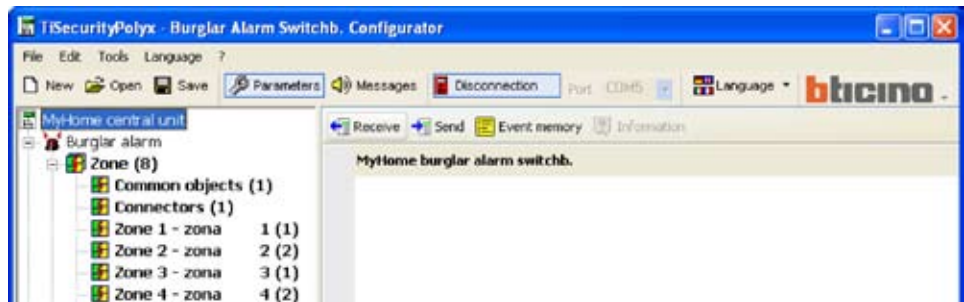
- > Enter the data
- > Click **OK** to close the window

7.2 Exchanging configuration parameters with the Unit

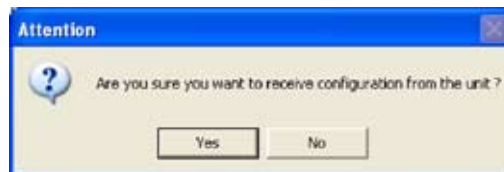
7.2.1 Receiving configuration parameters

This function allows you to receive the configuration parameters from the Unit.

- > Execute the Connection to Unit procedure
- > Click **Receive** button

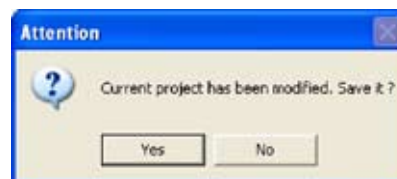


The following screen will appear



- > Click the **Yes** button

If the current project has not been saved, a reminder appears on the screen.



- > Click the **Yes** button



When the procedure has been completed, the Unit configuration parameters will be available in the relative section for future verifications or changes.

To activate a new configuration the sending procedure, described in the following paragraph, must be completed.

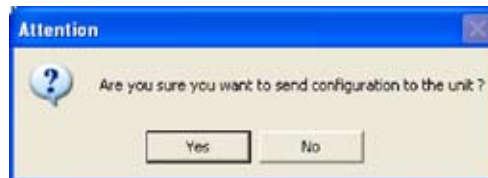
7.2.2 Sending configuration parameters

This function allows you to send the configuration parameters to the Unit.

- > Execute the Connection to Unit procedure
- > Click **Send** button

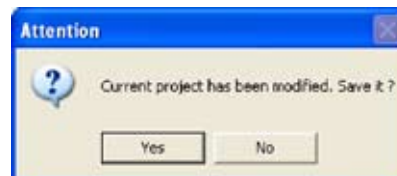


The following screen will appear

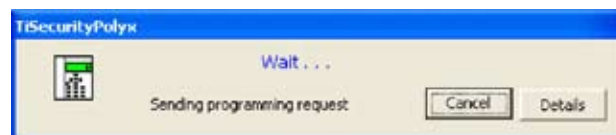


- > Click the **Yes** button

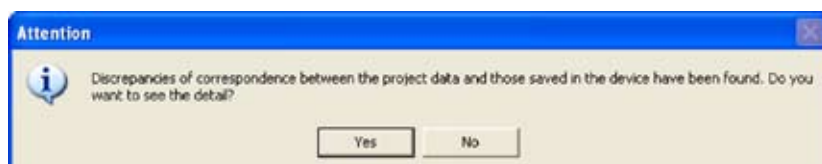
If the current project has not been saved, a reminder appears on the screen.



- > Click the **Yes** button



When sending the parameters, a comparison will be made between the configuration of the Unit and the configuration of the current project, if these are different the following warning message will appear:



Click **Yes** to display all differences found.

Zone	Device	Parameter	Project value	Device value	Notes
Common objects	Internal item 1	Presence of peripheral	present	not present	
Connectors	Peripheral 1	Type	Connector	Transponder reader	
Connectors	Peripheral 2	Presence of peripheral	present	not present	
Connectors	Peripheral 2	Type	Division	None	
Zone 1	Peripheral 1	Type	Contact interface	IR sensor	
Zone 2	Peripheral 1	Type	Contact interface	IR sensor	
Zone 2	Peripheral 2	Presence of peripheral	not present	present	
Zone 3	Peripheral 2	Presence of peripheral	present	not present	
Zone 3	Peripheral 2	Type	IR sensor	None	
Zone 3	Peripheral 3	Presence of peripheral	present	not present	
Zone 3	Peripheral 3	Type	IR sensor	None	
Zone 4	Peripheral 2	Type	Radio Receiver	Keypad with display	
Zone 4	Peripheral 3	Presence of peripheral	present	not present	
Zone 4	Peripheral 3	Type	IR sensor	None	

When **No** is clicked (or **Quit** in the error window), the following message appears:

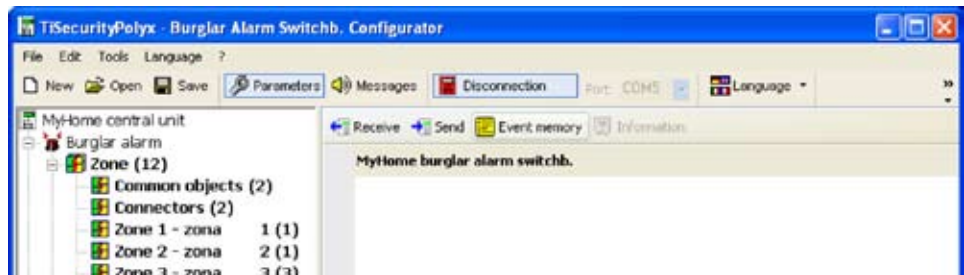


- > Click the **Force** button to send the parameters of the current project to the Unit and then modify its configuration.
- > Click the **Align** button to change the parameters of the current project, thereby aligning them with the configuration of the Unit.

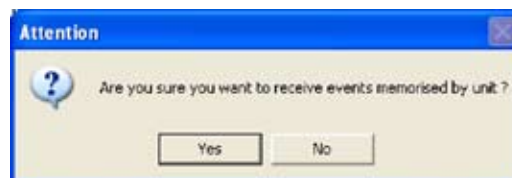
7.2.3 Receiving the history of events

This function allows you to receive the history of events. This is the chronological list of all events occurred on the burglar alarm system, and recorded by the Unit.

- > Execute the Connection to Unit procedure
- > Click **Event memory** button



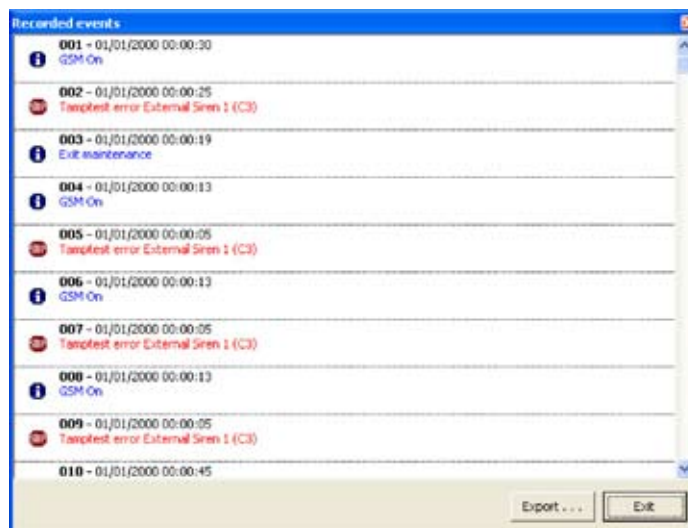
The following screen will appear



- > Click the **Yes** button

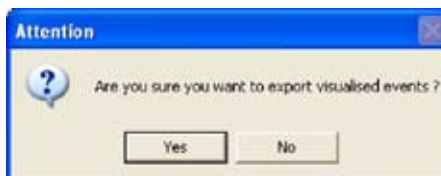


When the procedure has been completed, you will see a window showing the list of events recorded by the Unit in the history of events.



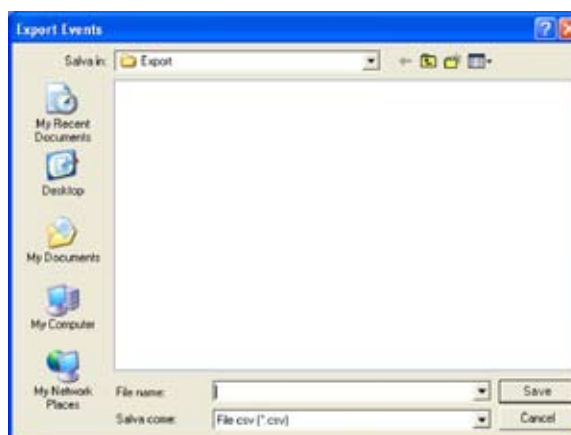
- > Click the **Export** button to export the event memory into a file

The following message will appear:



> Click the **Yes** button

The following screen will appear:



> Name the file

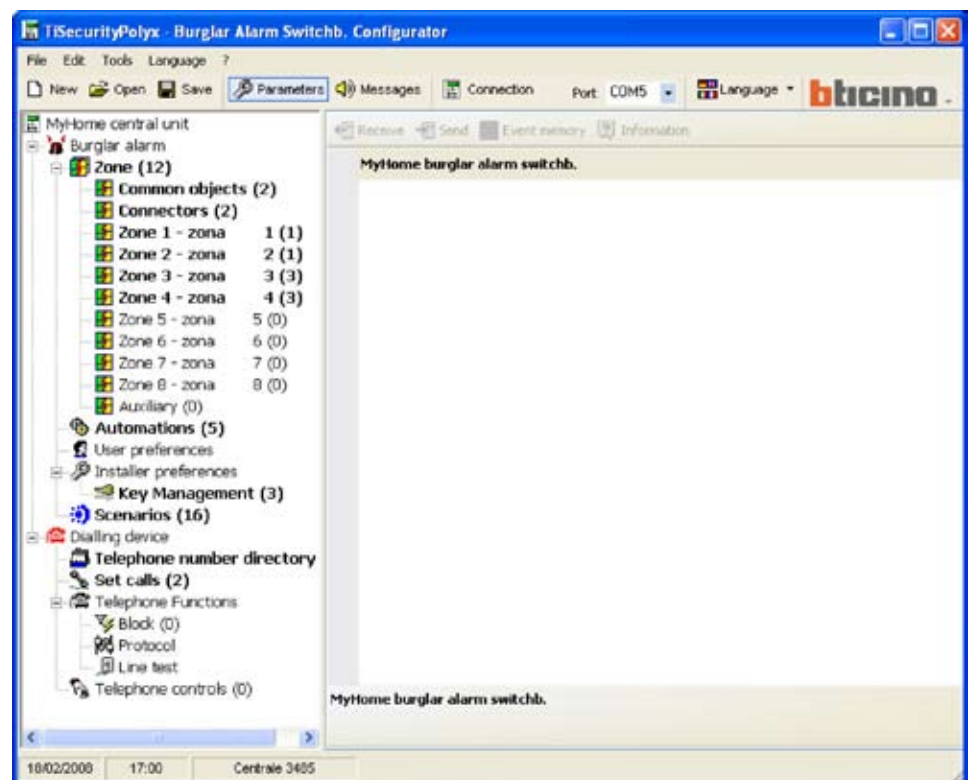
> Click the **Save** button

7.3 Configuration of the Burglar alarm section

In this section it is possible to set up the part of the Unit related to the burglar alarm system.

The options are as follows:

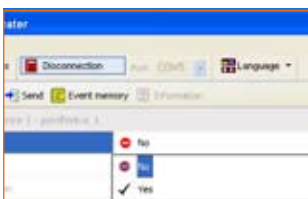
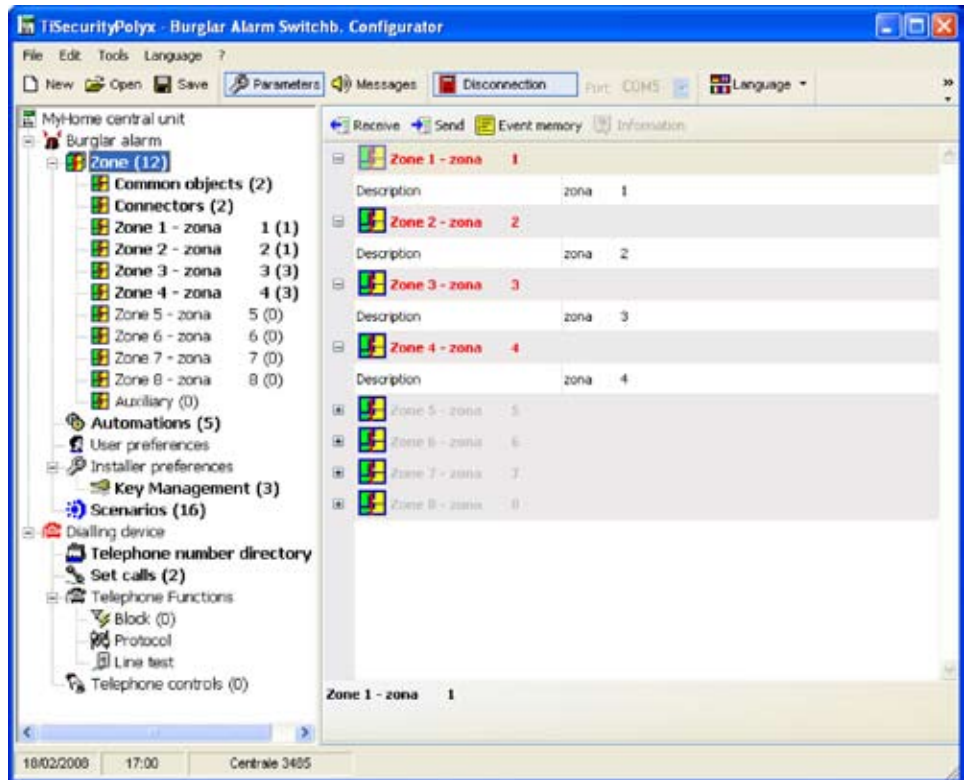
- Zones
- Automations
- User Preferences
- Installer preferences
- Scenarios



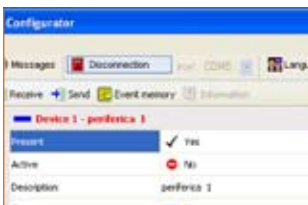
The tree structure will show the configured components with their number in brackets.

7.3.1 Zones

This screen shows the list of zones in which the burglar alarm system is divided. For each zone it is possible to enter a reference name which identifies it (eg. Entrance). Entering the description of a zone is possible only after the configuration of at least one device belonging to this zone.



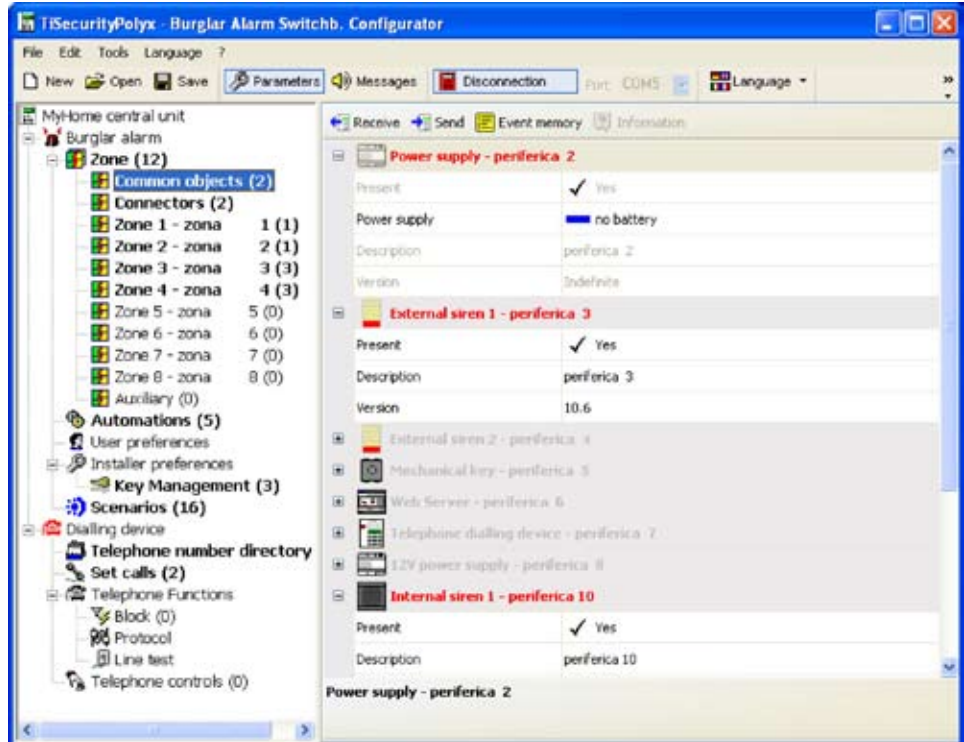
The following paragraphs will describe how to set up devices in different zones; to perform these configurations, the device must be present.



The present devices will be displayed in red.

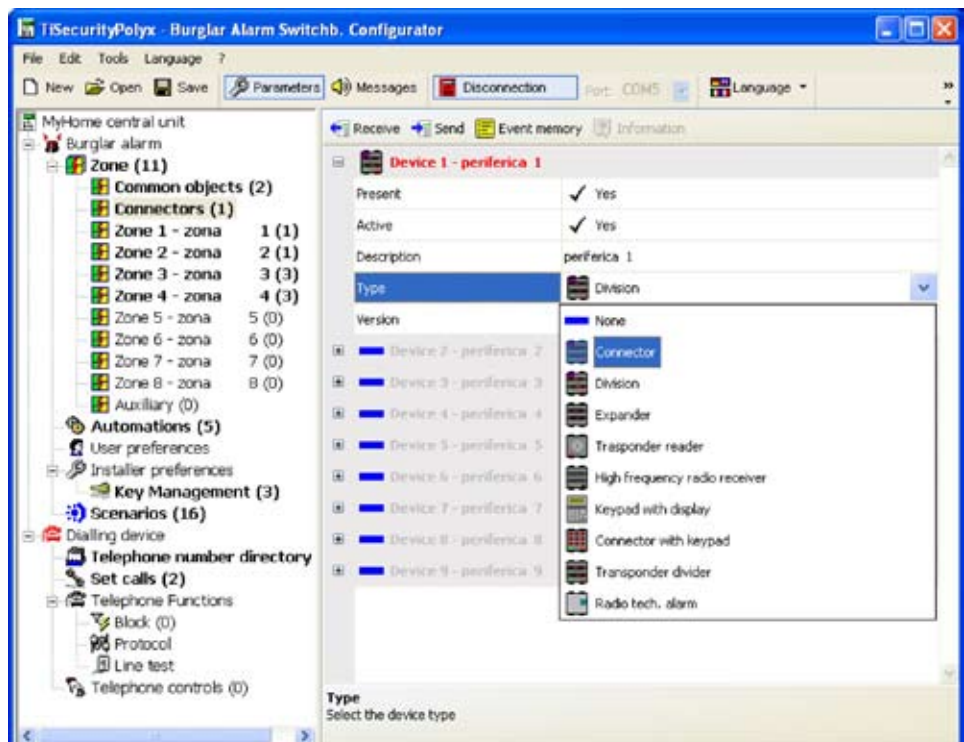
Common objects

This screen displays the devices which are common to the whole unit. It is possible to indicate the presence of the device and to enter a description.



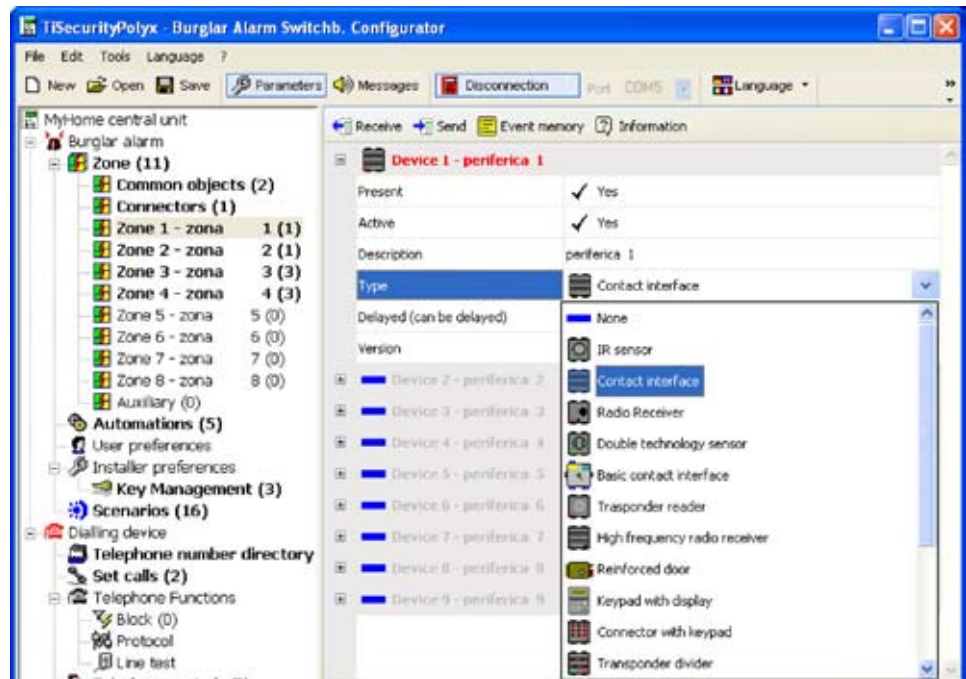
Connectors

This screen displays the connectors included in the burglar alarm system. It is possible to signal the presence, activate, enter a description and select the type of connectors among the available ones.

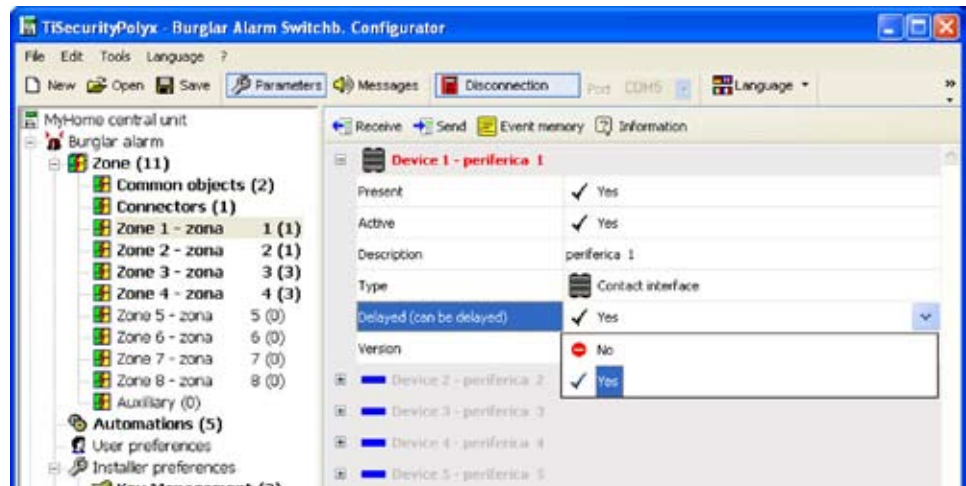


Zones 1...8

This screen displays the devices included in the single zones.
It is possible to signal the presence, activate, enter a description and select a type of device.



Furthermore, it is possible to enable/disable the activation delay the device can be delayed or not depending on the type of device selected and on its firmware version.



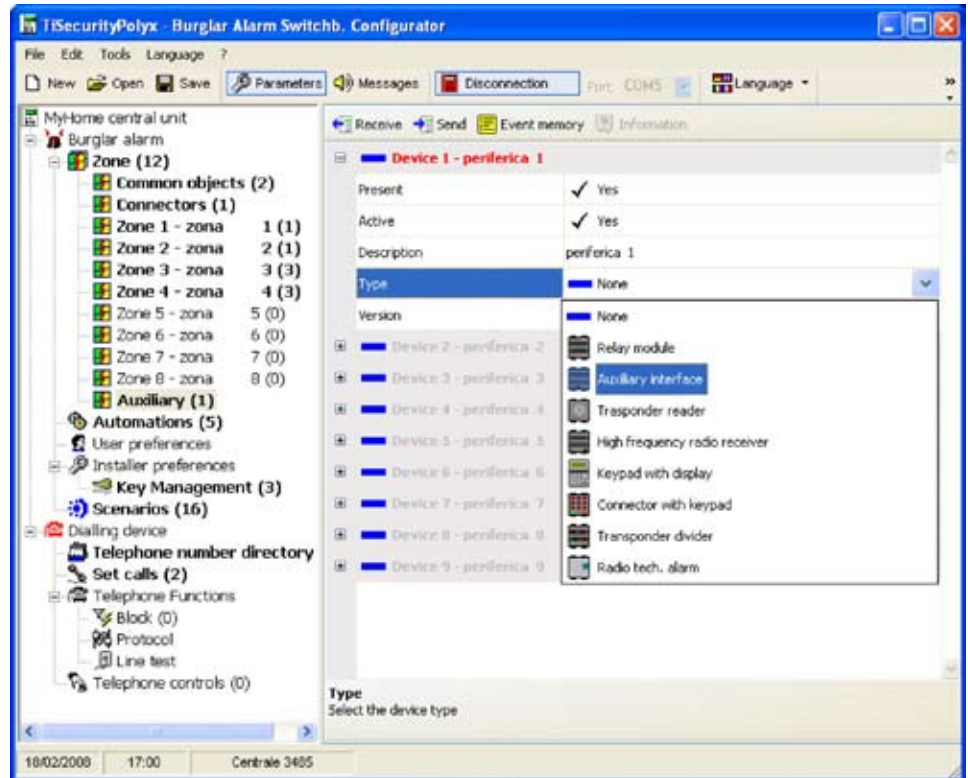
When you click the Information button, you will see a screen which will show how the delay time will be set up for the devices of the zone.

Information on the devices in Zone 1		
N device delayed	Delay in entry	Delay in exit
YES	Value set to User preferences	Value set to User preferences
NO	0 sec.	Value set to User preferences

Auxiliaries

This screen displays the devices which are not included in the burglar alarm system (e.g. gas leak detector).

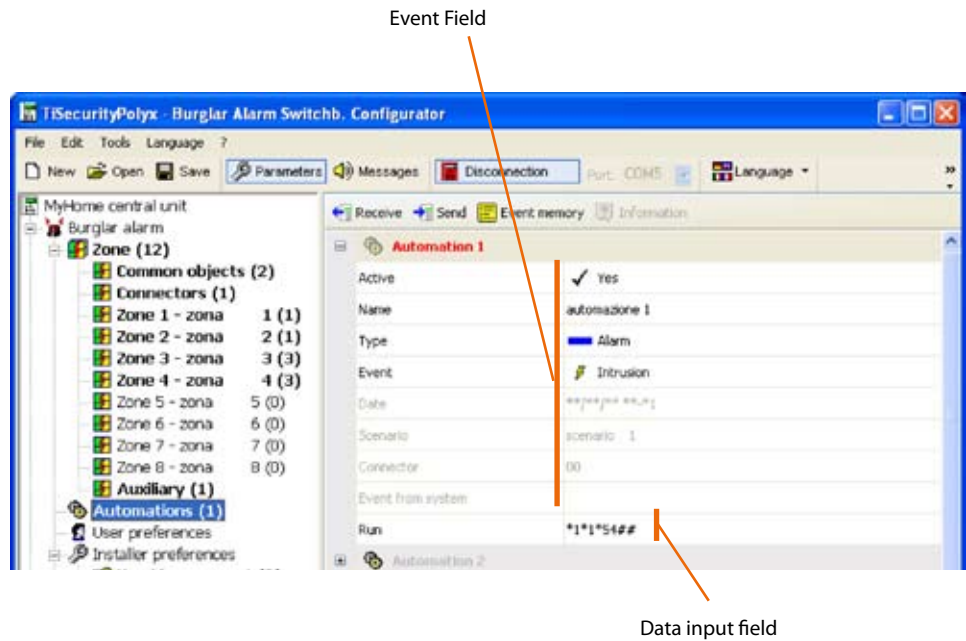
It is possible to signal the presence, activate, enter a description and select a type of device.



7.3.2 Automations

This screen shows the list of automations that can be set up (Max. 20). The automation lets you link an execution (set with an Open command) to one specific burglar alarm event.

It is possible to enable/disable the automation, enter a description and select an event to be matched with an execution to produce the automation required.



Event

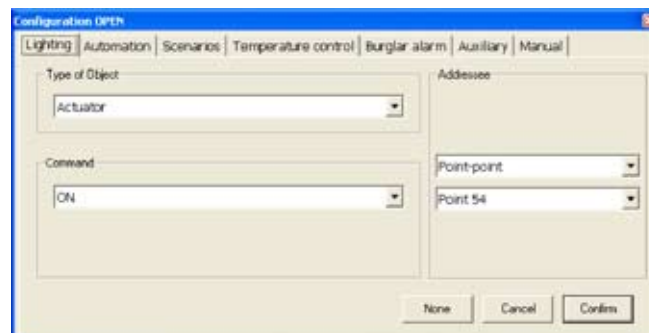
Depending on the choice made, it is possible to select a type of event from the **Type** drop-down menu; the underlying fields will be activated and dealt with later on.

Data input

Click **Run** to display the Open Configuration window. This can be used to define the Open Configuration (manually or using the guided procedure) for the selected event.

Guided Insertion:

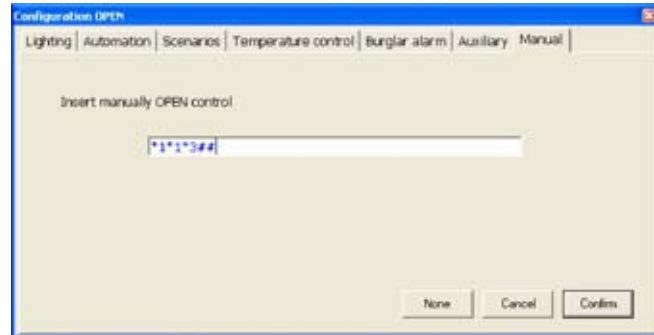
- > Select the Open Command and select the data related to the system, to the action and to the destination.



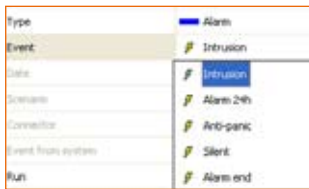
- > Click the **Ok** button

Manual Insertion:

- > Type in the Open Web Net code to create the Open Command

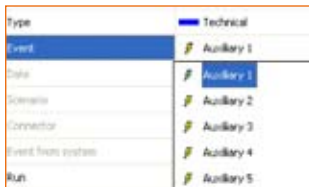


- > Click the **Ok** button



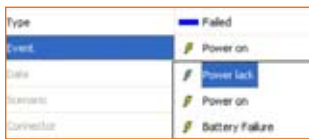
Type of event - **Alarm**

- > Select the type of event from the drop-down menu



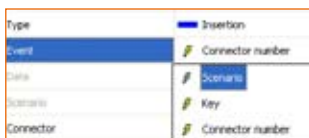
Type of event - **Technical**

- > Select the type of event from the drop-down menu



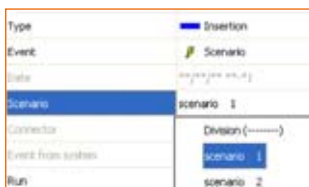
Type of event - **Power lack**

- > Select the type of event from the drop-down menu




Type of event - **Enable/Disable (Insertion/De-insertion)**

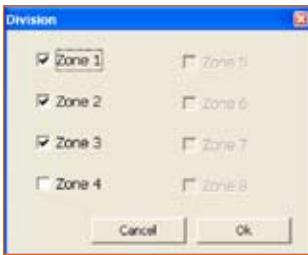
- > Select the type of event from the drop-down menu




The associated field will be activated by selecting the **Scenario** event

- > Click the  button to select the desired scenario

or



Click the  button to set the division

- > An independent window will be opened, select the zones to be divided
No scenarios can be set if there are no active zones.
- > Click **Ok**



The associated field will be activated by selecting the **Connector** event

- > Type in the connector number



Type of event - **Date**

The associated field will be activated by selecting the **Date** event from the drop-down menu

> Click the  button



- > Enter the date and time for the activation of set automatic event in the **Run** field.
To set an automatic event to run every day at a certain time, enter ** in the Day/Month/Year fields, and then the Hour and the Minutes.

- > Click **Ok**



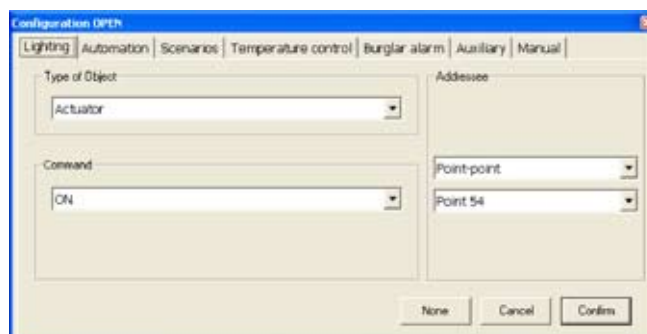
Type of event – **Event from system**

The associated field will be activated by selecting **Event from system** from the drop-down menu.

> Click the  button

With this type of event it is possible to match two data inputs (open-open): the first through the independent window which can be activated from the Event field whereas the second as per the other type of event from the Run field.

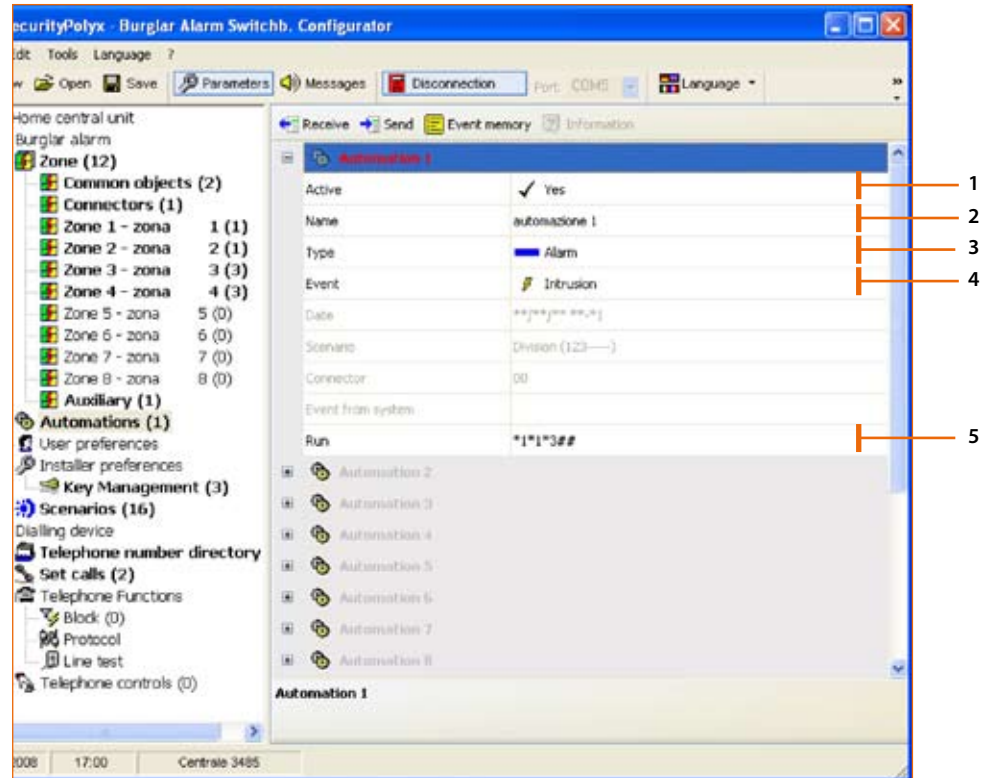
- > An independent window will be opened, enter the Open Command using the guided configuration procedure, or by directly entering the instruction in the Manual section.



- > Click **Ok**

Example of automation

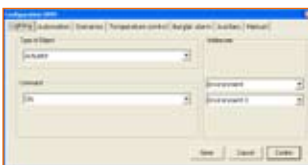
- Lights ON in "Room 3" at every trespassing alarm.



Procedure:

- 1 Enable automation
- 2 Type in the reference name of the automation (e.g. Staircase lights)
- 3 Select type of event - **Alarm**
- 4 Select Intrusion event
- 5 Enter the Open command which will activate the automation after the Intrusion event

Guided Configuration:



- > Select **System** LIGHTING
- > Select **Action** ON
- > Select **Destination** ROOM 3

> Click the **Ok** button

Manual Insertion:

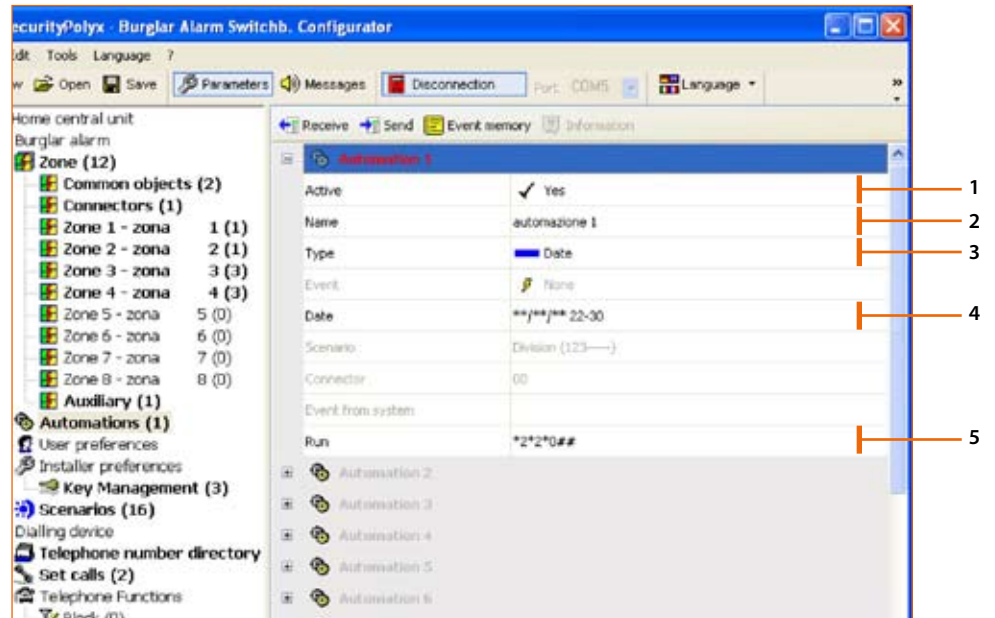


> Type in *1*1*3##

> Click the **Ok** button

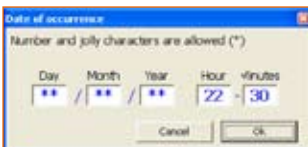
Example of automation

- Lower the blinds at 22:30 h every day.

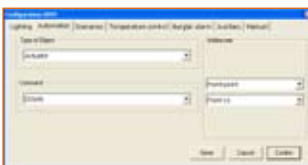


Procedure:

- 1 Enable automation
- 2 Type in the reference name of the automation (e.g. Evening)
- 3 Select type of event - **Date**
- 4 Enter the date and time
To set an automatic event to run every day at a certain time, enter ** in the Day/Month/Year fields, and then the Hour and the Minutes.
- > Click the **Ok** button
- 5 Enter the Open command which will activate the automation after the **Date** event

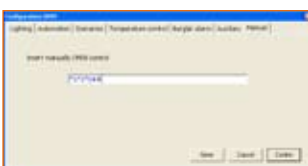


Guided Configuration:



- > Select **System** AUTOMATISMS
- > Select **Action** DOWN
- > Select **Destination** GENERAL
- > Click the **Ok** button

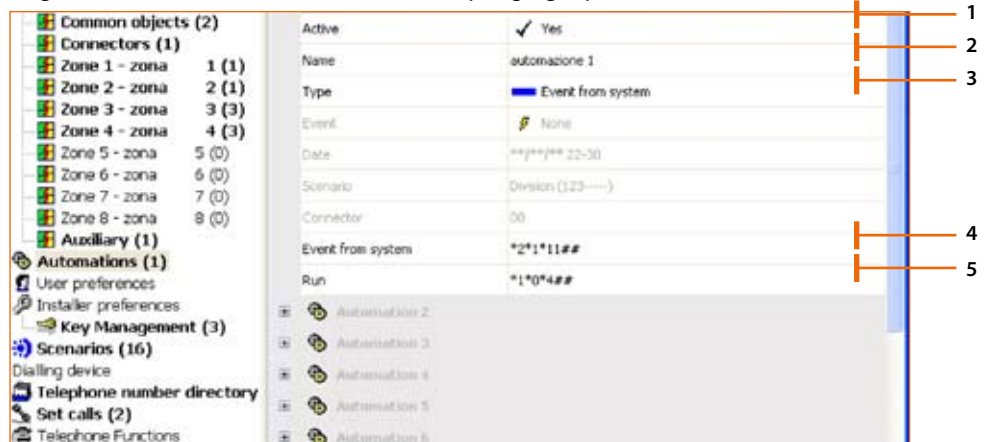
Manual Insertion:



- > Type in *2*2*0##
- > Click the **Ok** button

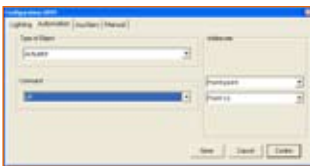
Example of automation

- Lights OFF Room 4 when the blind is rolled up (e.g. light point 11).



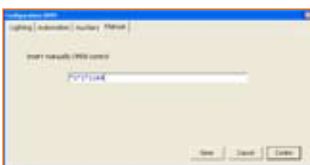
Procedure:

- 1 Enable automation
- 2 Type in the reference name of the automation (e.g. Day)
- 3 Select type of event – Event from system
- 4 Enter the Open command which will activate the automation.



Guided Configuration:

- > Select **System** AUTOMATISMS
- > Select **Action** UP
- > Select **Destination** LIGHT POINT 11
- > Click the **Ok** button



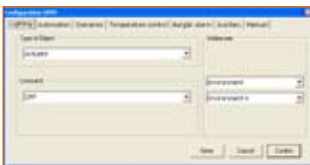
Manual Insertion:

- > Type in *2*1*11##
- > Click the **Ok** button

- 5 Enter the Open command which will be the automation.

Guided Configuration:

- > Select **System** LIGHTING
- > Select **Action** OFF
- > Select **Destination** ROOM 4



- > Click the **Ok** button



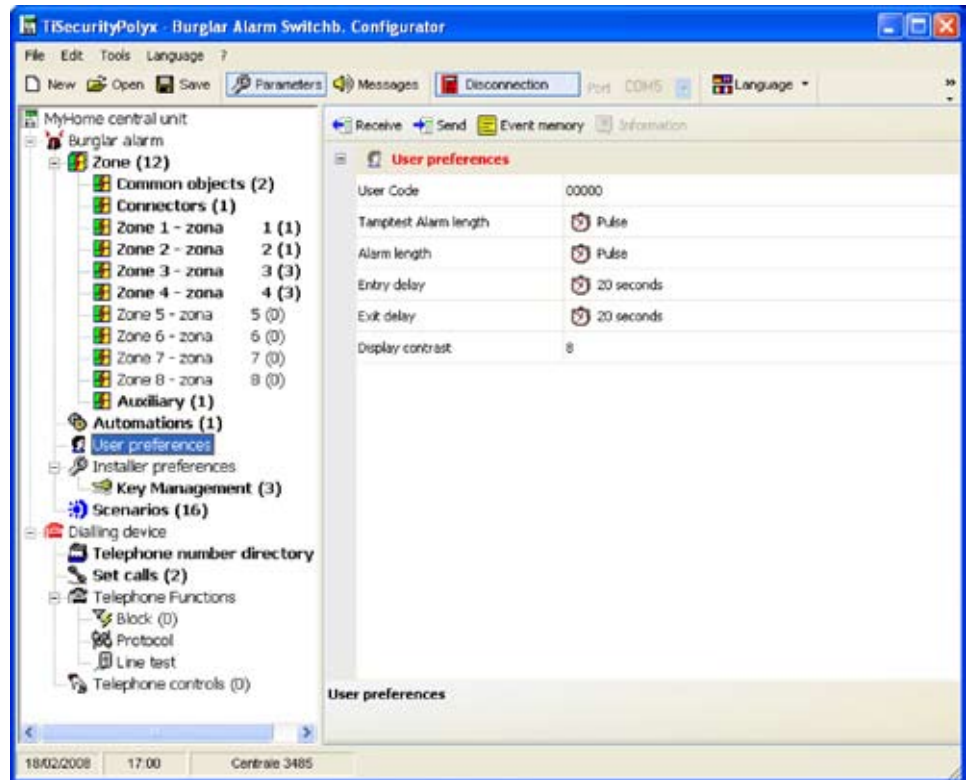
Manual Insertion:

- > Type in *1*0*4##
- > Click the **Ok** button

7.3.3 User Preferences

This screen displays the user's preferences.

It is possible to change all preferences in the procedures described hereinafter.



User Code

It enables you to enter or change the user code of the Unit.

In the basic configuration the user and maintenance code are the same; they also enable you to access all menus of the Unit.

Changing the user code will also automatically update the maintenance code as long as the latter is not modified.

- > Type in the user code in the required field

Tamptest Alarm length

Sets the duration of the siren sound in case of an alarm due to tampering or problems related to the SCS signal reception.

- > Select one of the proposed values from the drop-down menu

Alarm length

Sets the duration of the siren sound in case of an alarm.

- > Select one of the proposed values from the drop-down menu

Entry delay

Assigns the delay time for the activation of the sensors of zone 1. This allows you to pass through zone 1 before disconnecting the system and without activating the alarm.

- > Select the delay duration from the drop-down menu

Exit delay

Assigns the delay time for the activation of the sensors of zone 1. This allows you to pass through zone 1 after enabling the system and without activating the alarm.

- > Select the delay duration from the drop-down menu

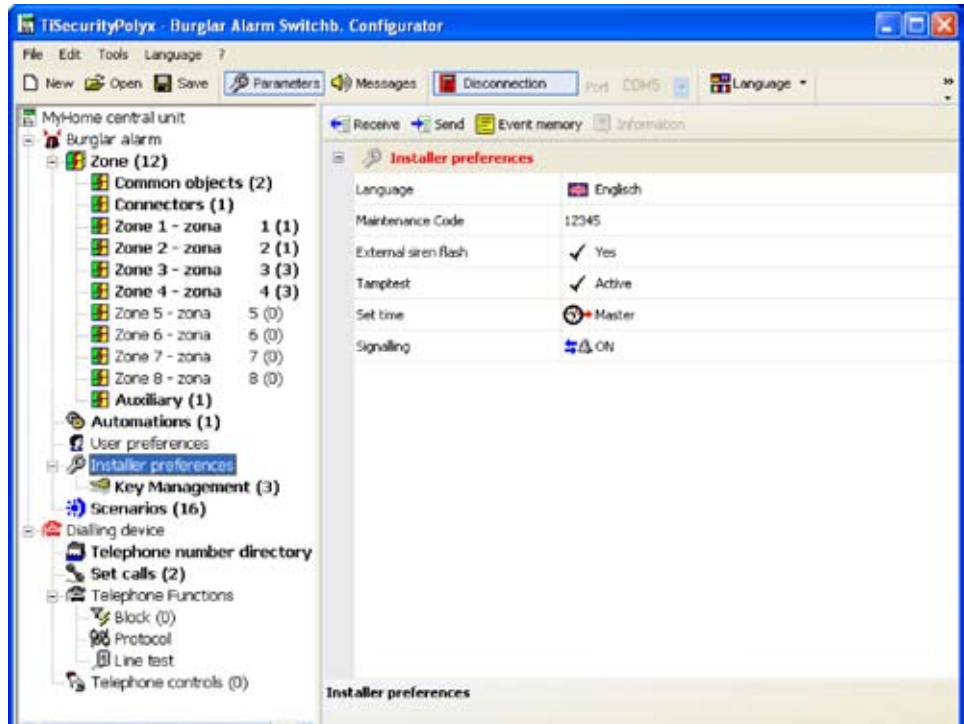
Display contrast

Adjusts the display contrast of the Unit.

- > Adjust the contrast with the arrows by clicking in the field

7.3.4 Installer Preferences

This screen displays the installer’s preferences. It is possible to change all preferences in the procedures described hereinafter.



Language

Adjusts the display language of the Unit as well as the voice messages.
 > Select one of the proposed languages from the drop-down menu

Maintenance Code

It enables you to enter or change the installer code (maintenance code). In the basic configuration the user and maintenance code are the same; they also enable you to access all menus of the Unit. This function enables you to distinguish them in order to allow only the installer to access the Maintenance menu of the Unit.
 > Type in the maintenance code in the required field

External siren flash

Enables/disables the ON (3 flash) and OFF (1 flash) signaling (through the flash of the external siren) of the burglar alarm system.
 > Select Yes/No from the drop-down menu.

Tamptest

Enables/disables the periodic check of the interconnections between the Unit and devices connected
 > Select Activ./Deactiv. from the drop-down menu.

Set time

Sets the unit as a Master clock (sends the time update to all MyHome devices provided with a clock, such as Touch Screen, Web Server, etc.) or as a Slave (receives the time update from other devices). Only one device of the MyHome system can be set as a Master.
 > Select Master/Slave from the drop-down menu.

Signalling

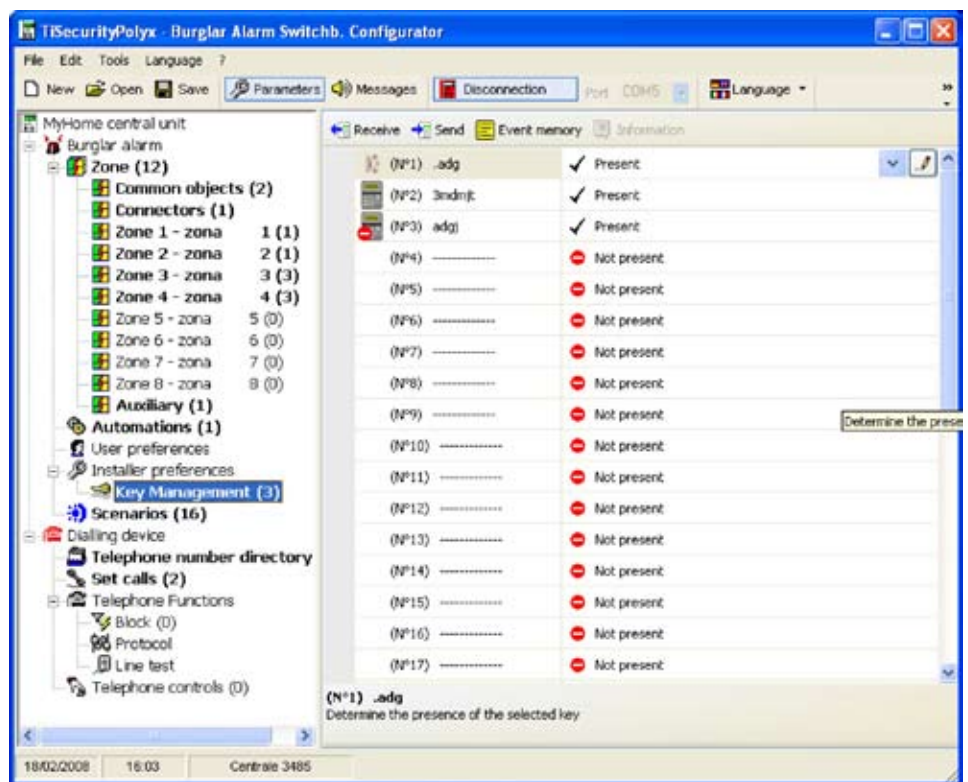
Activate/deactivate the audible signal at entry, exit, or both.

7.3.5 Key management

The programmed keys on the Control Unit can be customized using this menu. The following functions can be customized:

- key enable/disable
- ID name allocation
- combination with a scenario key or with a certain division
- limitation of the use of the key to certain weekdays and/or to a certain time band.

After programming the keys on the Control Unit, establish the PC connection and click "Receive", to transfer the configurations of the keys to the TiSecurityPolyx unit.



Enabling

Enables/disables the use of the key

Name

Enter a name for the key, so that its use can be easily checked in the event memory

Type of key

It indicates the type of key programmed on the Control Unit: IR remote control, keypad or transponder

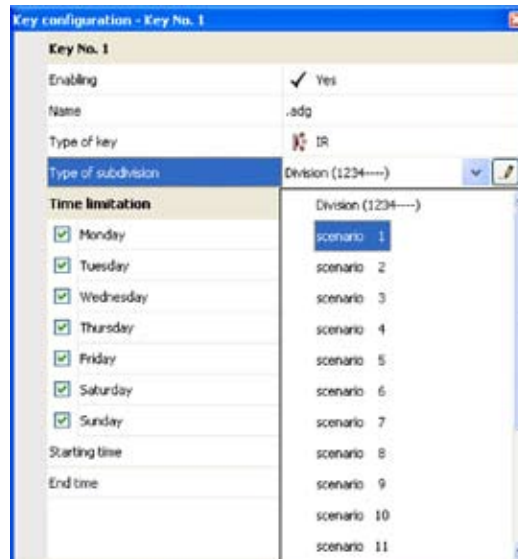
Type of subdivision

It can be used to link one of the sixteen programmable division scenarios, or, in alternative, a specific division, to the key (see following paragraph).

If the system is armed with the key programmed, the scenario or the division linked to the key will become active.

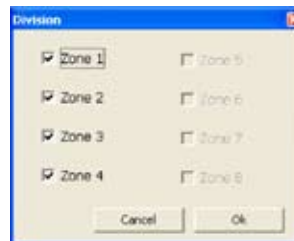


Click to open the drop-down menu for the selection of the division scenario



To set a division not set as a scenario, select **Division** and click . A window will appear, showing the zones present in the system. The ones showing the symbol are active. Click on the symbol to deactivate them.

No scenarios can be set if there are no active zones.



Time limitation

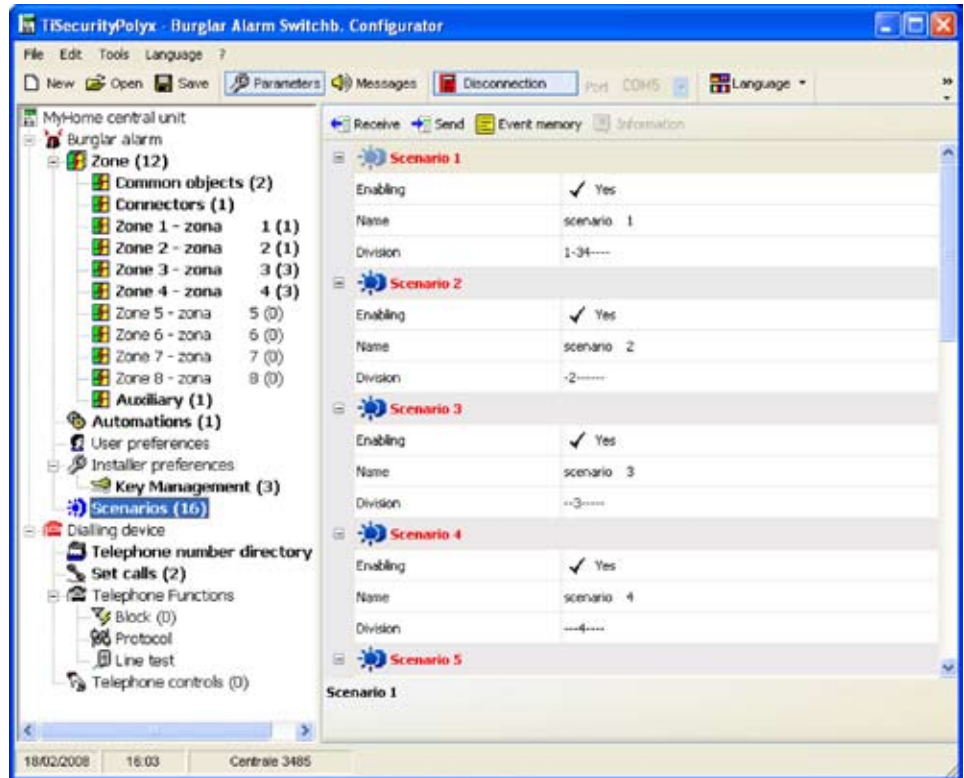
By default, the keys are enabled to be used at all times. It is however possible to limit their use depending on the user needs.

In the example below, the use of the key has been limited to 8.30 to 11.30, Mondays and Thursdays.



7.3.6 Scenarios

Up to sixteen division scenarios can be created in this section. These can be selected by the user, depending on specific needs, using the Control Unit keypad.





Enabling

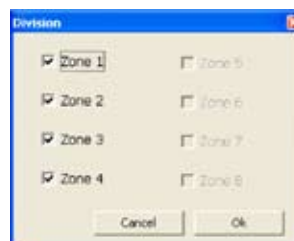
Enables/disables the scenario

Name

Enter a name for the scenario (e.g. perimeter)

Division

Select **Division** and click . A window will appear, showing the zones of the system, marked with the  symbol. The symbol indicates that the zones are active, and can be clicked to activate them. No scenarios can be set if there are no active zones.

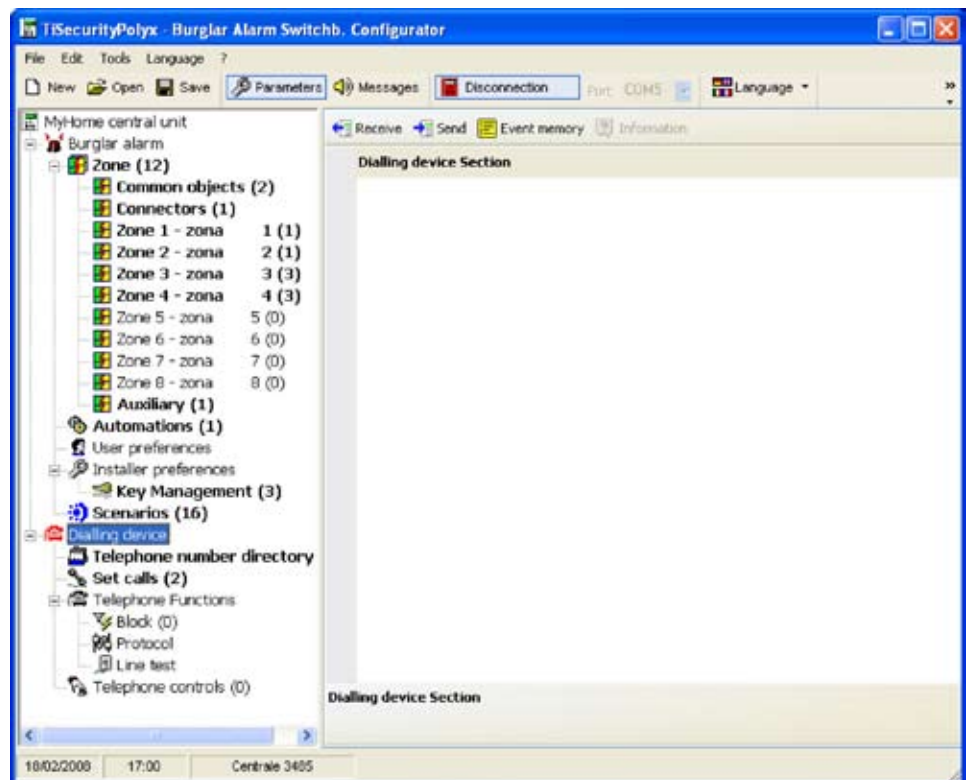


7.4 Configuration of the Dialling device section

In this section it is possible to set up the part of the Unit related to the Telephone Dialling Device.

The options are as follows: :

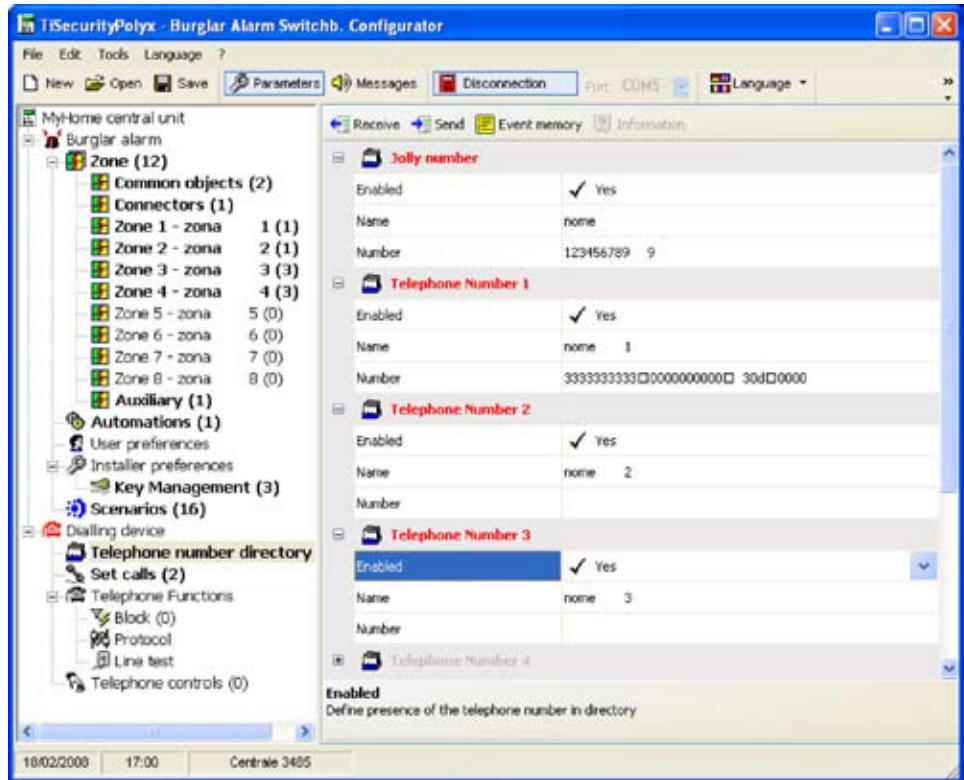
- Telephone number directory
- Set calls
- Telephone functions
- Telephone controls



The tree structure will show the configured components with their number in brackets.

7.4.1 Telephone number directory

In this screen it is possible to set up the jolly number and the 10 telephone numbers of the directory.



Jolly number

It is the first telephone number called by the Unit when any type of alarm is detected (intrusion, failure, technical alarm).

If the MyHome portal is enabled, make sure the Jolly number matches the telephone number of the portal.

If the ADEMCO protocol is used, the jolly number must be the surveillance unit number.

It is possible to enable/disable, enter a description and a telephone number.

Telephone number 1...10

It is possible to store the 10 telephone numbers of the directory in these fields. The numbers of the directory entered will be able to be used (e.g. for being included in the 4 numbers to be called according to the type of alarm recorded by the burglar alarm system – see “Outgoing calls”), only if enabled in this template.

It is possible to enable/disable, enter a description and a telephone number.

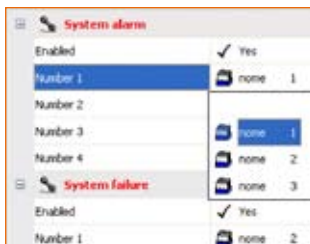
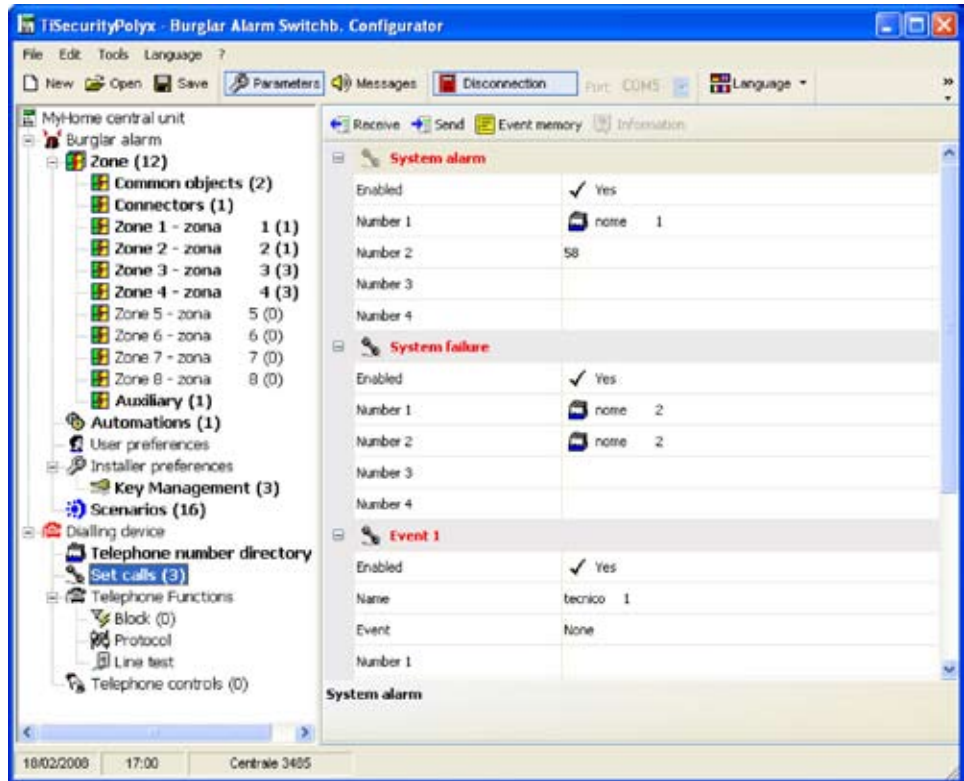
7.4.2 Setting up calls

This screen lets you match some telephone numbers stored in the directory with the alarm events detectable by the burglar alarm or any specific Open event chosen by the user.

When a specific even occurs, the Control Unit will call the set phone number and communicate the type of alarm that has occurred using a voice message (see chapter “Messages”).

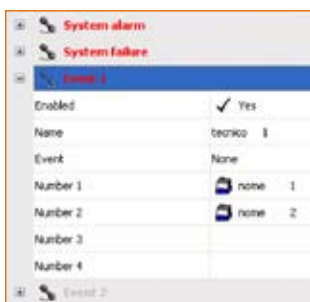


Please note: the telephone numbers to be matched will appear in the drop-down menus only if previously enabled in the telephone number Directory screen



Calls following a System alarm event and System failure

- > Enable/disable the event
- > Select the telephone numbers of the directory to be matched with the event from the drop-down menu (max. 4 numbers)

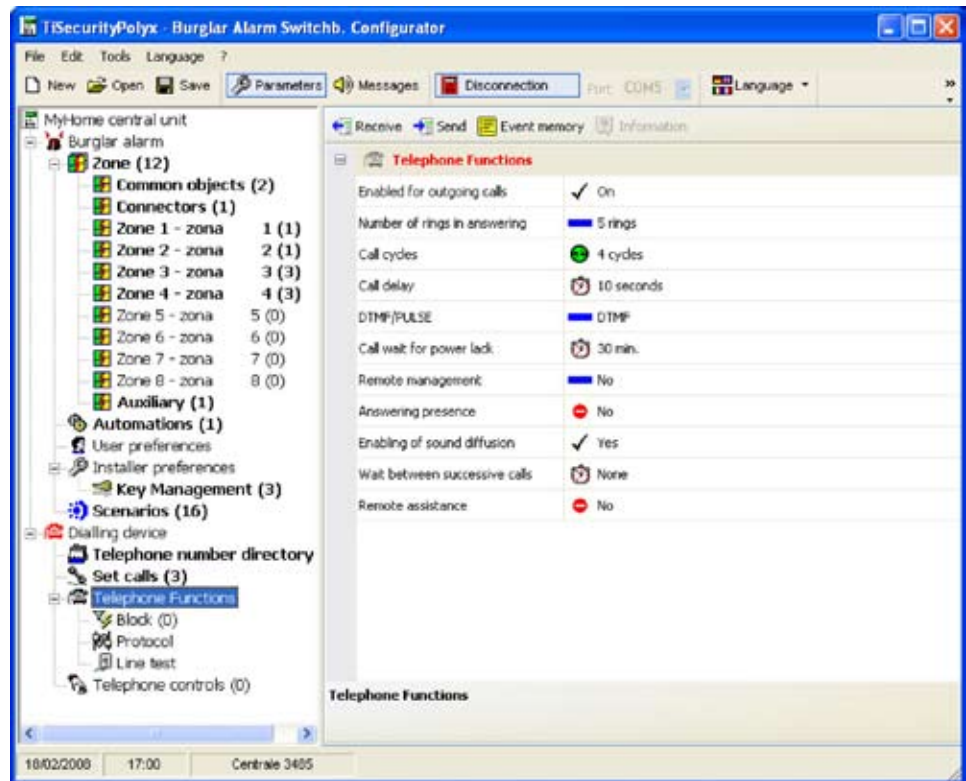


Calls following an Open event

- > Enable/disable the event
- > Type in the reference name
- > Enter the OPEN command which will initiate the call
- > Select the telephone numbers of the directory to be matched with the event from the drop-down menu (max. 4 numbers)

7.4.3 Telephone functions

This screen displays the telephone functions that can be customized. It is possible to change all functions in the procedures described hereinafter.

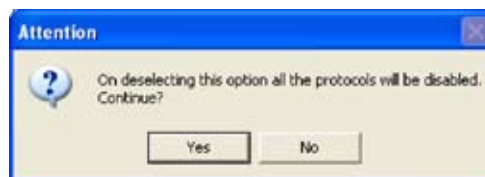


Enabled for outgoing calls

Enables/disables the dialling device to make telephone calls.

- > Select Yes/No from the drop-down menu

If this function will be disabled and if a protocol (MyHome Portal or ADEMCO) is active, the following message will appear:



- > Click the Yes button

The function is now "Enabled for outgoing calls" and the "MyHome Portal" service is disabled.

Number of rings in answering

Sets the number of rings, after which the dialling device answers a call. If there's an answering machine, the number of rings shall be higher than the one set for the answering system.

- > Select the number of rings from the drop-down menu

Call cycles

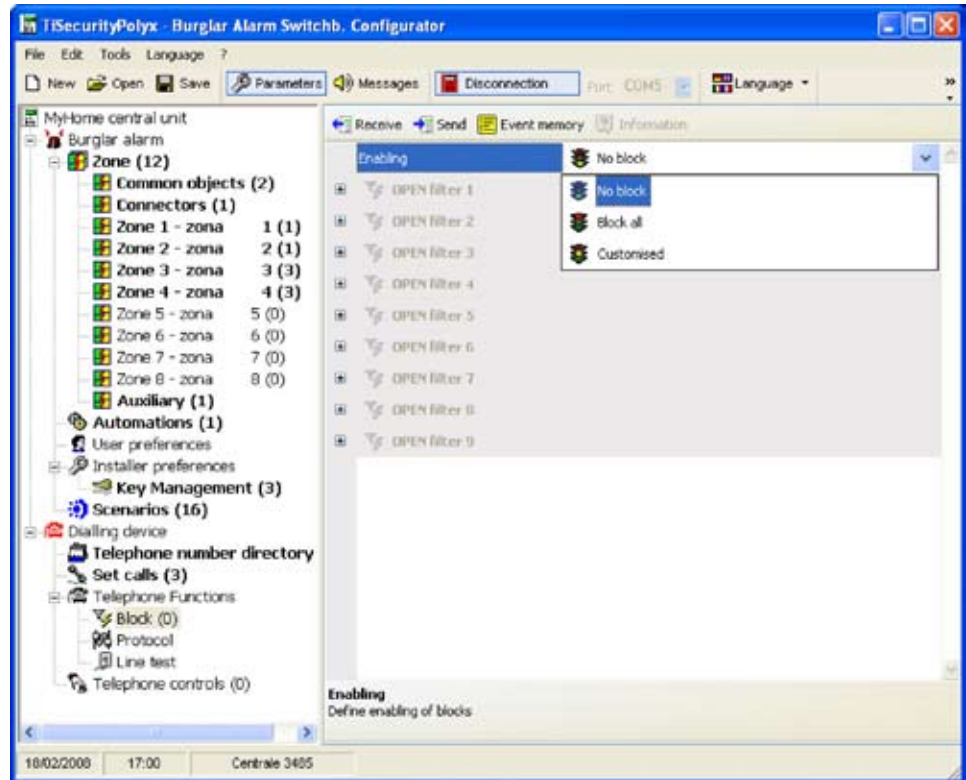
Determines the number of times the dialling device will repeat calls to the numbers from which it did not receive an answer.

- > Select the number of cycles from the drop-down menu

Call delay	<p>Sets the delay time, following an alarm, before the call cycle is started.</p> <ul style="list-style-type: none">> Select the delay time from the drop-down menu
DTMF/PULSE	<p>Allows you to set the type of line.</p> <ul style="list-style-type: none">> Select DTMF (tone dialling line) or PULSE (pulse dialling line) from the drop-down menu
Call wait for power lack	<p>Sets the time between the moment power goes off and the starting time of the Unit telephone calls.</p> <ul style="list-style-type: none">> Select the waiting time from the drop-down menu
Remote management	<p>Enables/disables the management of the burglar alarm system from the telephone line.</p> <ul style="list-style-type: none">> Select from the drop-down menu:<ul style="list-style-type: none">USER: Remote control can only be performed by the user.MANAGER: Remote control can only be performed by the Surveillance Unit.ON: Remote control can be performed by the User and by the Surveillance Unit.OFF: Remote control is disabled.
Answering presence	<p>Informs the dialling device that an answering machine is installed on the telephone line.</p> <ul style="list-style-type: none">> Select Yes/No from the drop-down menu.
Enabling of sound diffusion	<p>Enables/Disables the possibility to send remote voice messages to the room (via the Unit loud-speaker and if connected from the sound system) and the room listening function via the Unit microphone.</p> <ul style="list-style-type: none">> Select Yes/No from the drop-down menu.
Wait between successive calls	<p>Assigns the waiting time between one call and the next.</p> <ul style="list-style-type: none">> Select the waiting time from the drop-down menu
Remote assistance	<p>Enables/disables entry remote assistance calls for the surveillance units using the ADEMCO protocol. Remote assistance is only possible if the 3485 control unit is in "System Test" mode.</p> <ul style="list-style-type: none">> Select Yes/No from the drop-down menu

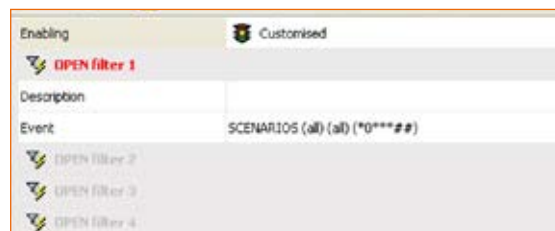
7.4.4 Block (Lock)

In this screen it is possible, through the options available in the “Enabling” drop-down menu, to decide not to lock the open commands remotely, to lock all of them or to set up to 4 Open commands that cannot be performed remotely.



> Select type of lock from the “Enabling” drop-down menu

If you select “Customized” it will be possible to define the filters described hereinafter.



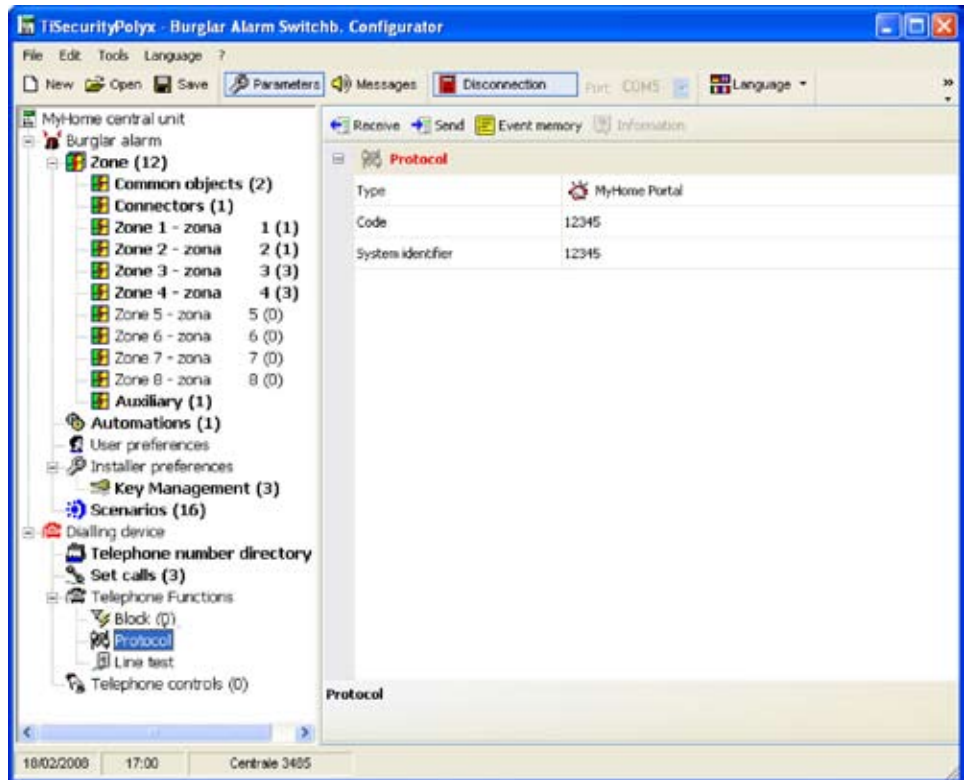
> Enter a description for the filter

> Enter the Open command you want to lock.

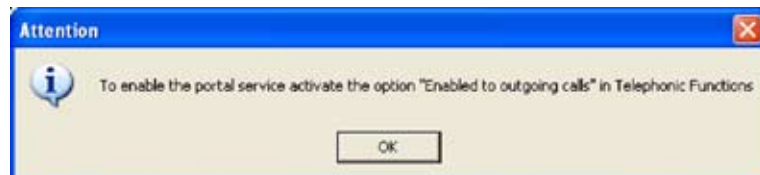
7.4.5 Protocol - MyHome Portal

This screen displays the setups for managing the system through the MyHome portal.

- > In Type select **MyHome Portal**.
- > Type in the password OPEN to access the system.
- > Type in the System identifier provided by the MyHome portal



After enabling the My Home Portal, if the Control unit is not “Enabled for out calls”, the following message will appear:



- > Execute the operations described in the message and repeat the operation


When the My Home Portal is enabled, the Jolly number must be the portal telephone number.

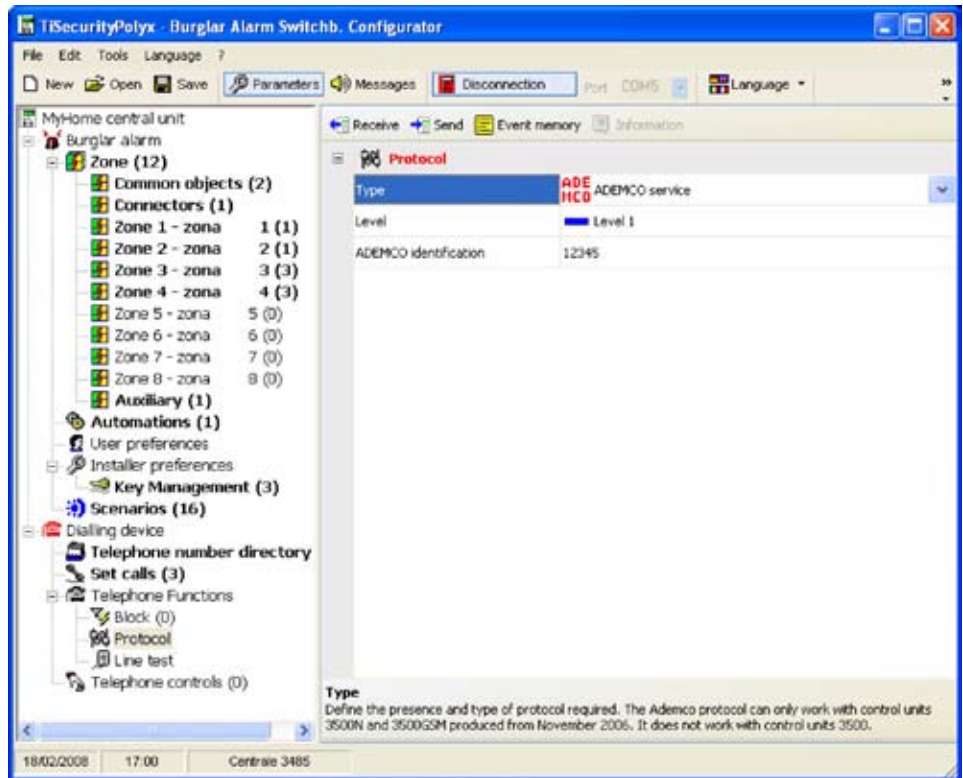


7.4.6 Protocol - ADEMCO

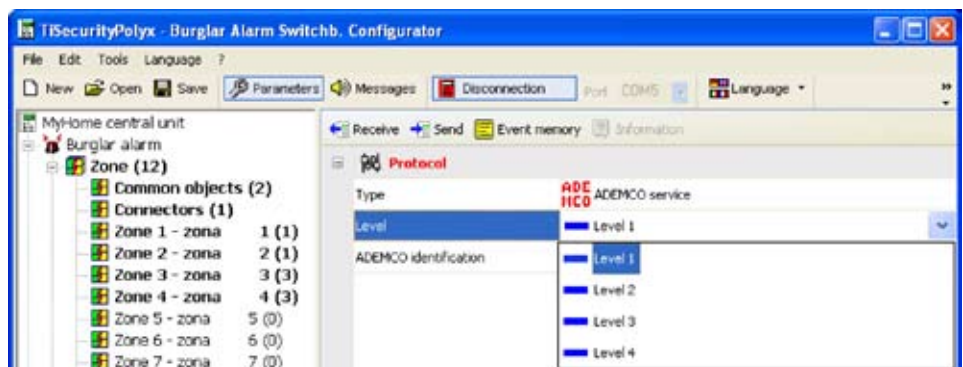
This setting enables automatic sending of alarm notifications and events to the surveillance unit using the Contact ID protocol.

- > In Type select **ADEMCO Service**
- > Enter the ADEMCO ID supplied by the surveillance unit

 **Please note:** the ADEMCO protocol can only be activated if the Control unit is "Enabled for out calls"



- > Select the surveillance service level (refer to the table)

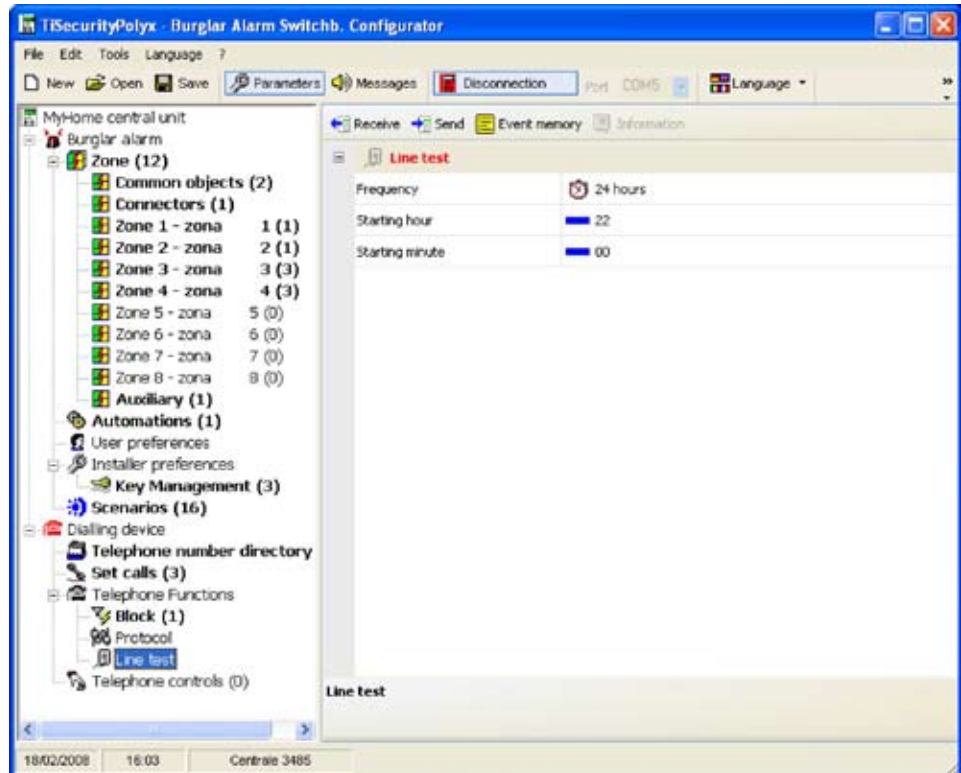


Ademco level	Events signalled to the Surveillance control unit
1	Intrusion, anti-panic and tampering alarms
2	As level 1 + system signals (e.g. battery flat, power cut)
3	As level 2 + technical alarms (auxiliary commands)
4	As level 3 + switching ON and switching OFF events

7.4.7 Line test

The Control unit can be set to check the good working order of the telephone line at set times and intervals.

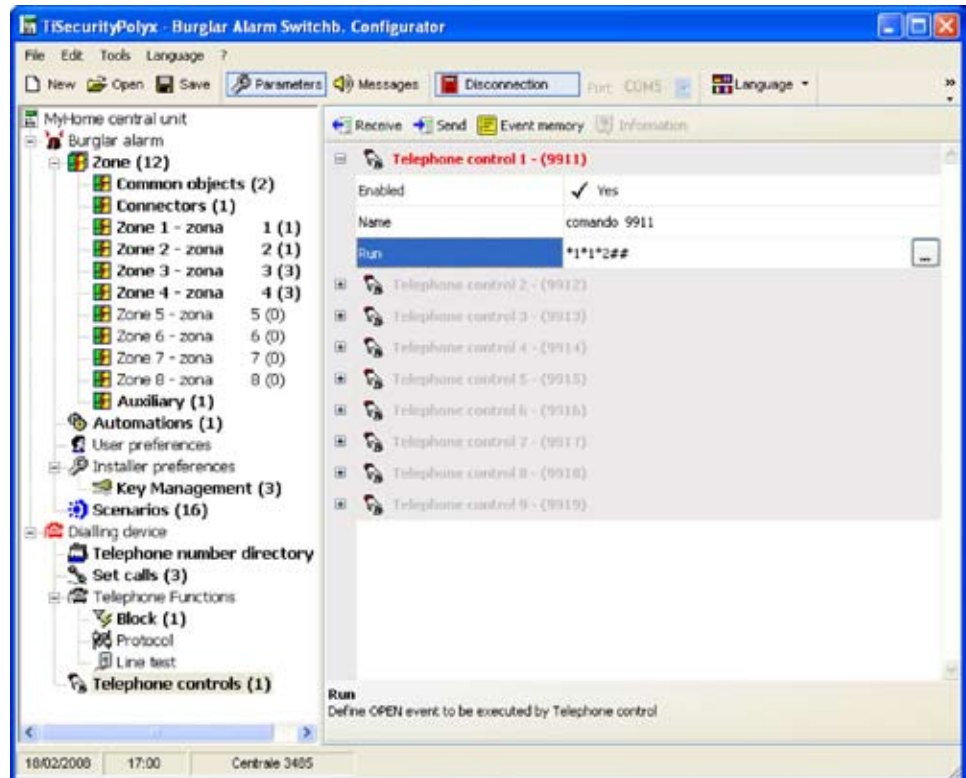
- > Set the frequency for the completion of the test
- > Enter the Test Start Hour and Minutes.



7.4.8 Telephone commands

In this screen it is possible to set up telephone commands which can later be executed by the user through simplified codes consisting of just 4 digits, through the Unit keypad or by telephone.

- > Enable/disable the command
- > Type in the reference name
- > Enter the command open code.



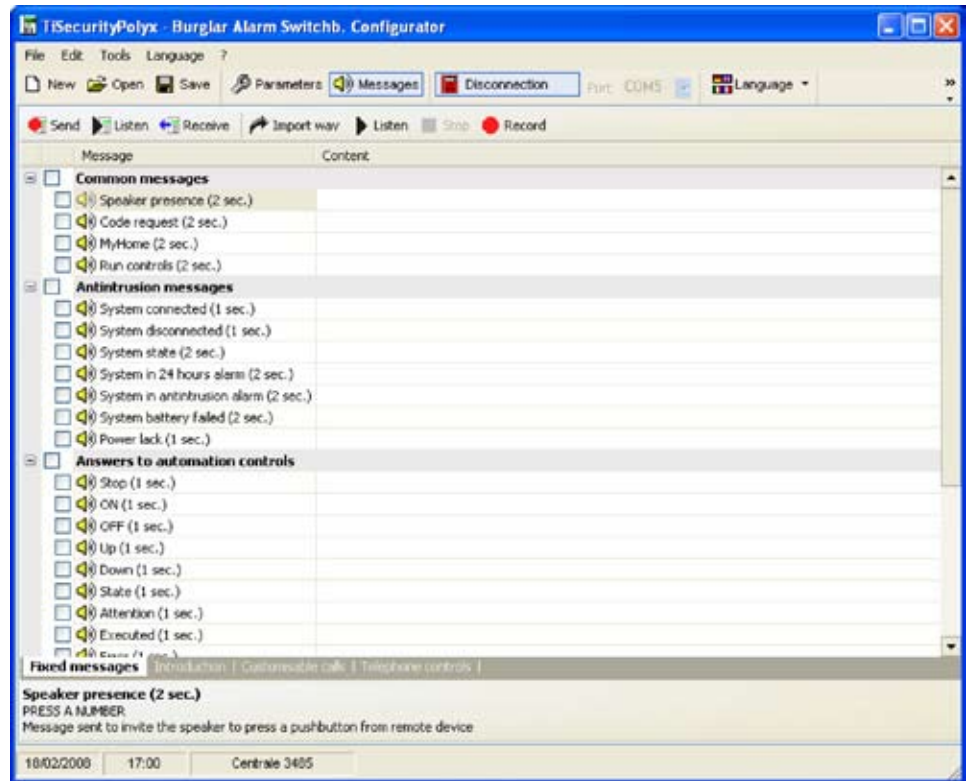
In this case, by remotely typing in the command 9911, the user will switch on the entrance lights whereas if 9901 is typed in, they will switch off.

The user can record a personalized voice message only for the first 4 telephone commands (see chapter "Messages").

8. Messages

In this section, it is possible to manage voice messages which are sent from the Unit to the set telephone numbers when a particular event occurs or as an answer to telephone commands sent by the user.

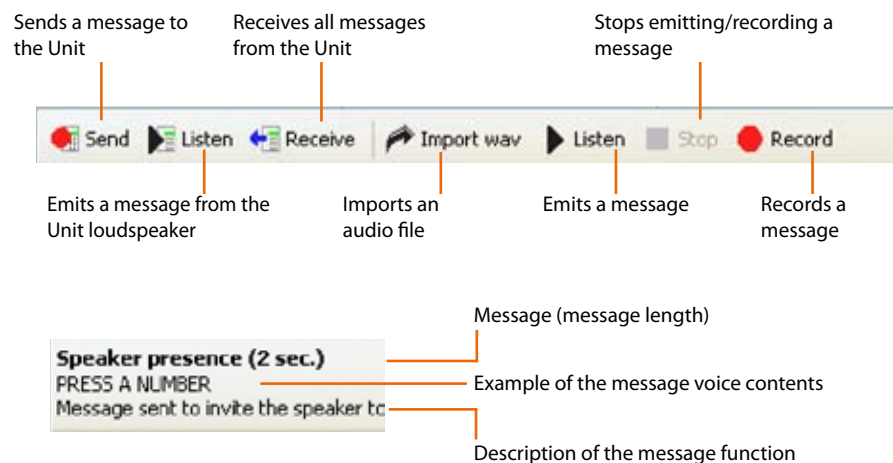
8.1 Work area



The screens in the “Messages” section display the messages related to the type selected in the bottom menu (fixed Messages, Presentation, customizable Calls, telephone Commands); it is possible to select the various templates by clicking the corresponding buttons.

The screens are divided into two columns: the tree-structured Message column includes the messages whereas in the Content column it is possible to enter a name which identifies the message. The messages will have a green background.

At the top part of the screen there is a message management bar and at the bottom there is a zone where there will be different information related to the selected message.

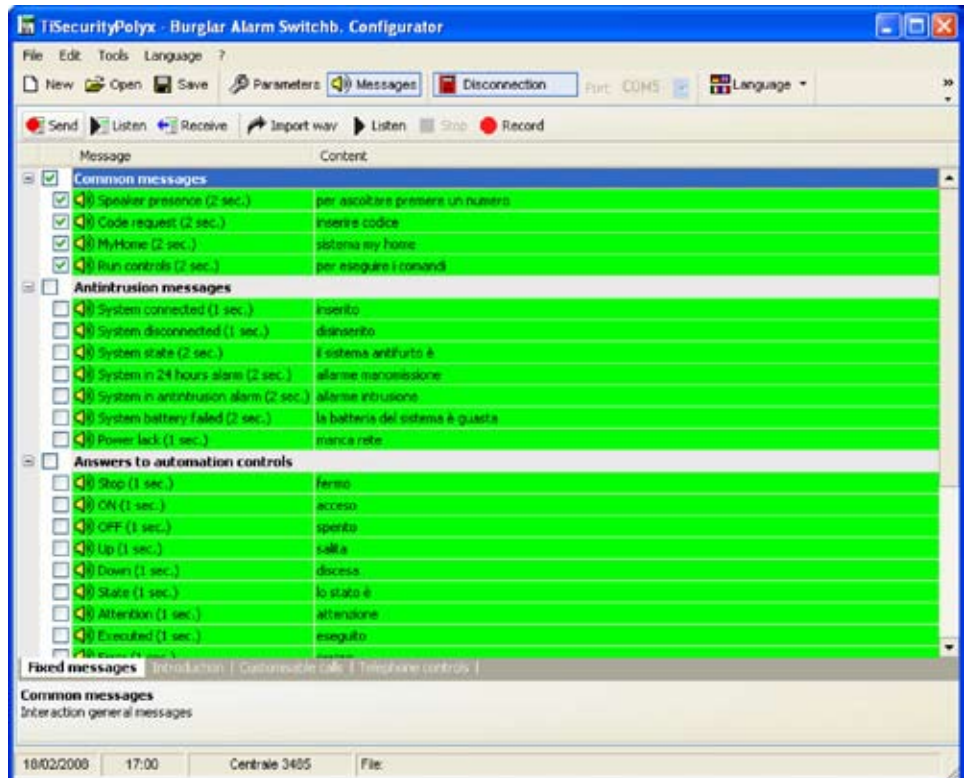


8.2 Exchanging voice messages with the Unit

8.2.1 Sending voice messages

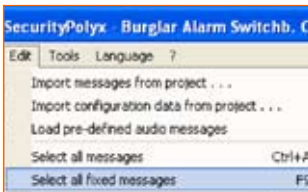
This function allows you to send one or more messages to the Unit.

- > Execute the Connection to Unit procedure



- > Select by ticking the box next to the message to be sent

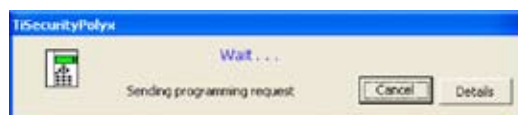
or select all messages



- > Choose **Select all messages** from the **Edit** menu or **Select all fixed messages** as needed



- > Click Send from the message management bar



wait until the procedure has been completed

8.2.2 Listening to messages from the Unit loudspeaker

This function allows you to listen to the message selected from the Unit loudspeaker.

- > Execute the Connection to Unit procedure.
- > Select a message; the message will be highlighted.



- > Click **Listen** from the message management bar

The message will be emitted from the Unit loudspeaker.

8.2.3 Receiving voice messages


This function allows you to receive all messages included in the Unit.

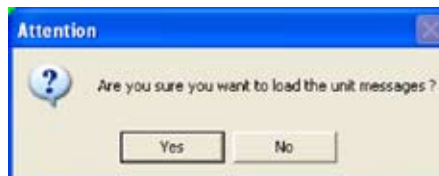
- > Execute the Connection to Unit procedure



- > Click **Receive** from the message management bar.

The following message will appear

 **Please note:** the messages in the current project file will be overwritten.



- > Click the **Yes** button



When the procedure has been completed, the Unit voice messages will be available in the Messages section for future verifications/changes, if required.

8.3 Voice message commands

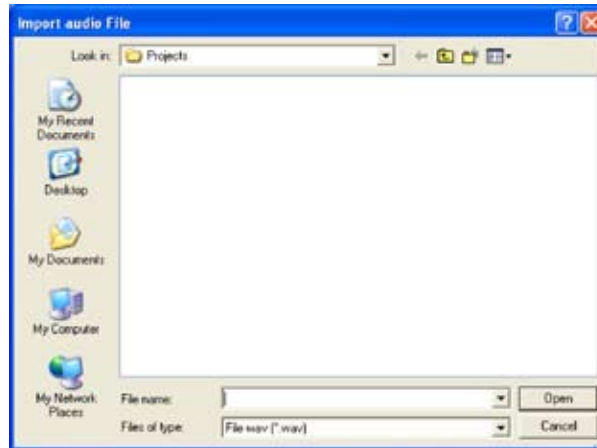


8.3.1 Importing an audio file

This function allows you to import an audio file.

- > Select a message; the message will be highlighted.
- > Click **Import wav** from the message management bar

The following screen will appear



- > Select the audio file (. wav) from where you want to import the messages

The installation directory includes the folder "Wave", in which the voice messages are contained and divided into folders according to the language.

The audio file must have the following features:

- maximum duration as per description (... sec.)
- type .wav
- sampling: PCM 8Khz
- resolution: 8 bit Mono
- > Click the **Open** button



8.3.2 Emitting a voice message

This function allows you to emit a message from the PC loudspeaker

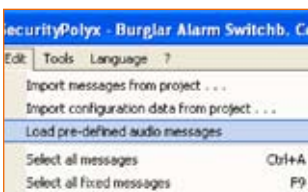
- > Select a message; the message will be highlighted.
- > Click **Listen** from the message management bar. the message will be emitted
- > Click **Stop** from the message management bar to stop



8.3.3 Recording a voice message

This function allows you to record a message

- > Select a message; the message will be highlighted.
- > Click **Record** from the message management bar
- > Start recording by speaking in a normal voice from a microphone connected to the PC
- The recording will automatically end when the preset time for the message has elapsed.



8.3.4 Retrieving voice messages

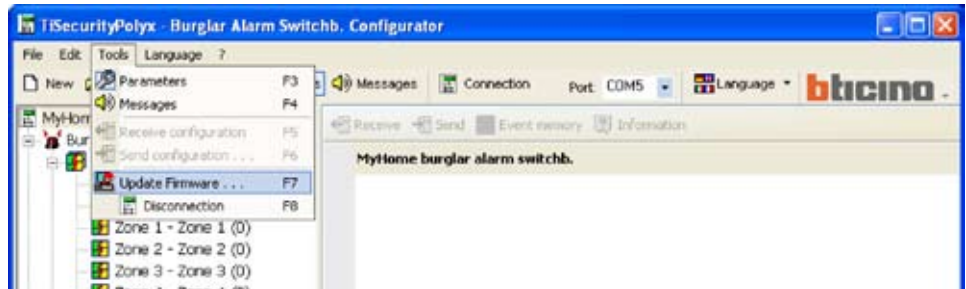
This function allows you to retrieve voice messages set up for the Unit

- > Select **Load pre-defined audio messages** from the **Edit** menu
- The pre-defined audio messages will be retrieved by overwriting those of the current project.

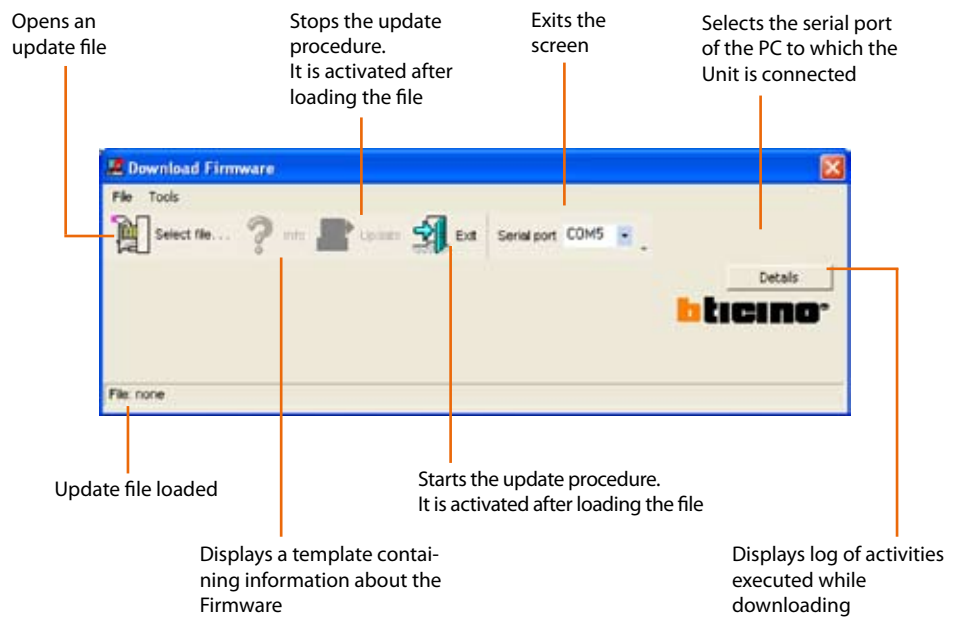
9. Update Firmware

This function allows you to update the permanent basic software (firmware) in the unit through revision procedures distributed by Bticino

- > Select **Update Firmware** from the **Tools** menu



The Download Firmware screen will appear

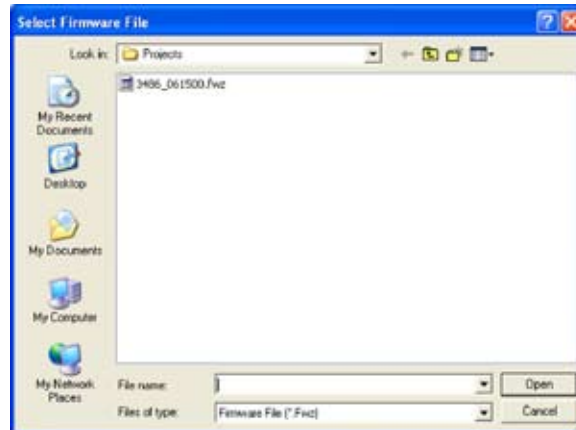


The above commands are also available in the File and Tools drop-down menu.

- > Click the **Select file** button

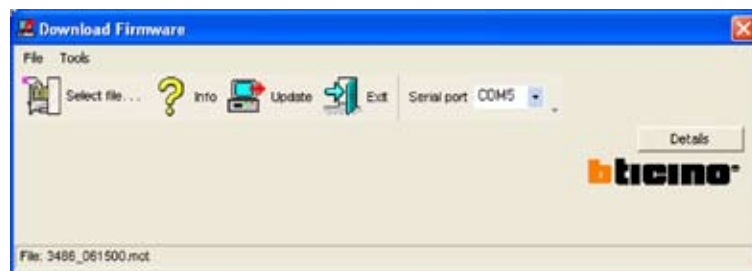


The following screen will appear



- > Select the update file (.fwz)
- > Click the **Open** button

The Update button is now available



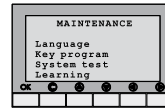
- > From the **Port** drop-down menu, select the serial port of the PC you want to connect the Unit to.
- > Click the **Update** button

The following message will appear

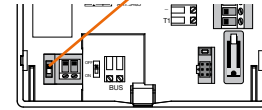


Execute the required operations and then click **OK**

Select the maintenance menu of the Unit



Slide switch

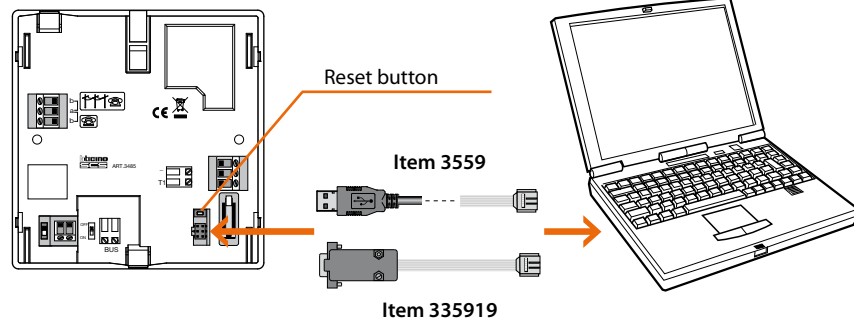


Flip the slide switch to off

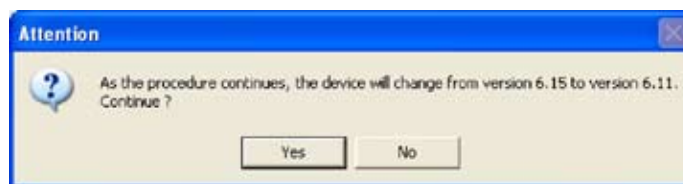
Click the OK button



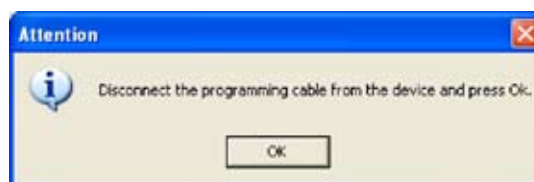
Connect the **programming cable** to a serial port or a USB of the PC and to the 6-way connector of the Unit. Press the **reset button**.



The application performs a comparison between the selected firmware and the Control Unit firmware. If the selected firmware is an older version than the one on the Control Unit, a warning will appear.

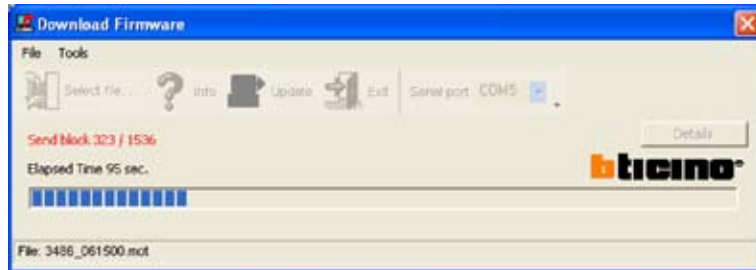


click **NO** to terminate the update program

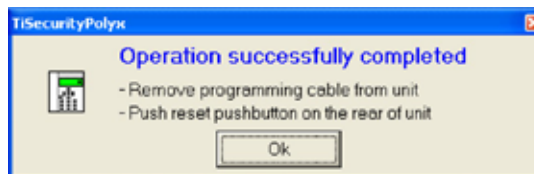


> Disconnect the programming cable and press **OK**

If the selected firmware is a more recent version than the one on the Control Unit, the update procedure will continue without any other messages.



When the update procedure has been completed, the following message will appear along with an audible alert



- > Disconnect the programming cable from the Unit
- > Click the **OK** button
- > Press the Unit reset button.

The Unit firmware is now updated.

Once the updating process has been completed it is possible, by clicking on Detail, to display a window which lists the activities carried out during the firmware download operation.





BTicino SpA
Via Messina, 38
20154 Milano - Italy
www.bticino.it

BTicino SpA reserves at any time the right to modify the contents of this booklet and to communicate, in any form and modality, the changes brought to the same.