

ORDERMAN®

Bedienungsanleitung **Gürteldrucker**

User Manual **Mobile Printer**

Istruzioni per l'uso **Stampante da cintura**

Manual de instrucciones **Impresora portátil**

Mode d'emploi **Imprimante portable**



 **Van Mechelen**
KANTOORMACHINES - KANTOORMATERIALEN

Patersstraat 106-108
2300 Turnhout
Tel: 014/42.55.99
Fax: 014/42.32.64

BTW BE 0415.638.961
Rek: 230-0026460-96
info@vanmechelen.be
www.vanmechelen.be



Patersstraat 106-108

2300 Turnhout

Tel: 014/42.55.99

Fax: 014/42.32.64

BTW BE 0415.638.961

Rek: 230-0026460-96

info@vanmechelen.be

www.vanmechelen.be



Bachstraße 59,
5023 Salzburg – Austria

www.orderman.com

Mistakes and typing errors excepted.

Copying, including copying of extracts, is not permitted unless written permission has been given by Orderman GmbH.

P3.60-226.V3.1

- Orderman takes no responsibility for damages or losses that result from use of these instructions for use.
- Orderman takes no responsibility for third party losses or claims that result from the use of the Orderman mobile printer.
- Changes to the content of these instructions for use are excepted and may be changed without advance notice.
- These instructions for use may not be part of a contract.
- Trade marks: All brands and product names are trademarks or registered trademarks of their respective companies.

Contents:

1	General	18
1.1	Welcome to the world of the Orderman mobile printer.....	18
1.2	Orderman mobile printer scope of delivery.....	18
2	Safety advice	19
3	Introducing the Orderman mobile printer	20
4	Correct start-up	21
4.1	Charging the battery.....	21
4.2	Inserting the battery	22
4.3	Inserting the thermal paper roll.....	23
4.4	Cleaning the thermal head and the rubber roller	24
4.5	Producing a test print	24
5	Quality thermal paper KANZAN KPR 540	25
6	Technical data	26
7	Connection of the Mobile Printer to the Handheld Device	26
7.1	Orderman Max2plus Synchronization with the Orderman Mobile Printer	27
7.2	Orderman Leo2plus Synchronization with the Orderman Mobile Printer	28
8	Declarations of conformity	29

1 General

1.1 Welcome to the world of the Orderman mobile printer

Congratulations on purchasing an Orderman mobile printer. This document will help you to get to know your Orderman mobile printer and familiarize yourself with its functions.

1.2 Orderman mobile printer scope of delivery

Your Orderman mobile printer comes with the following accessories: rechargeable battery pack, a battery-charger, a belt bag, a thermal paper roll and these operating instructions.



Patersstraat 106-108
2300 Turnhout
Tel:014/42.55.99
Fax: 014/42.32.64

BTW BE 0415.638.961
Rek: 230-0026460-96
info@vanmechelen.be
www.vanmechelen.be

2 Safety advice



General safety advice

- The appliances do not contain any parts that are suitable for servicing by the user and may therefore not be taken apart. The warranty claim shall become void if the appliance is opened.
- Please ensure that the appliance is used in a dry environment.
- This printer is fitted with Bluetooth[®] for wireless communication. Never use the printer in areas in which Bluetooth[®] can cause disruption (aircraft, hospitals etc.).



Printer safety advice

- Do not touch the paper cutter or the thermal head as there is a risk of injury.



Rechargeable battery safety advice

- Only use the rechargeable battery model supplied for the printer.
- Do not expose the rechargeable battery to extreme heat. Never short-circuit the contacts – this could cause an explosion.



Charger safety advice

- Never short-circuit the contacts.
- Only charge the battery designed for the printer.

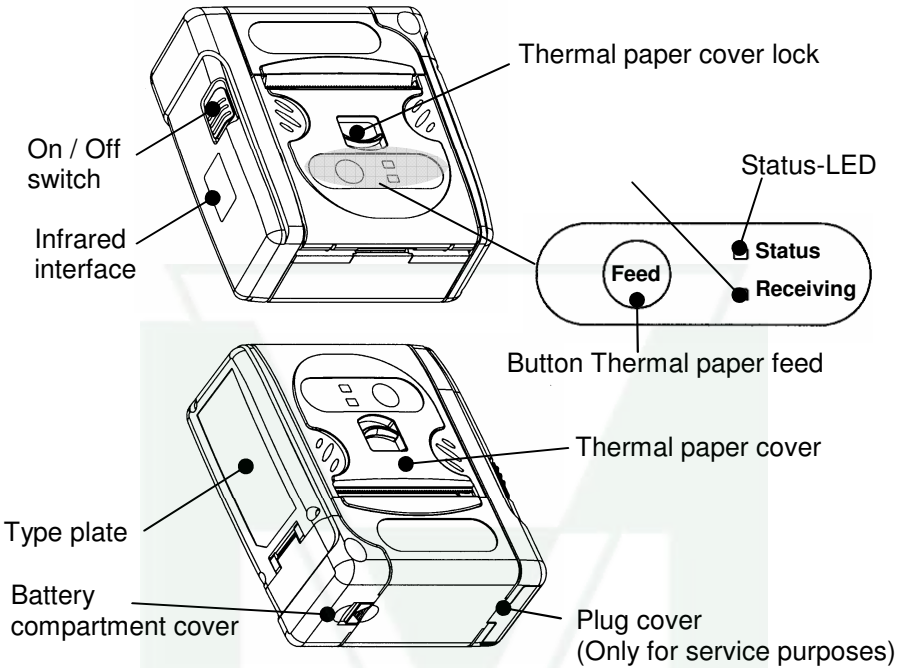


Thermal paper safety advice

- Use only the Orderman KANZAN KPR540 thermal paper. It is specifically qualified for this printer. It is identifiable by the Orderman imprint on the reverse side. By using other types of thermal paper, the thermal head will become damaged or dirty.

3 Introducing the Orderman mobile printer

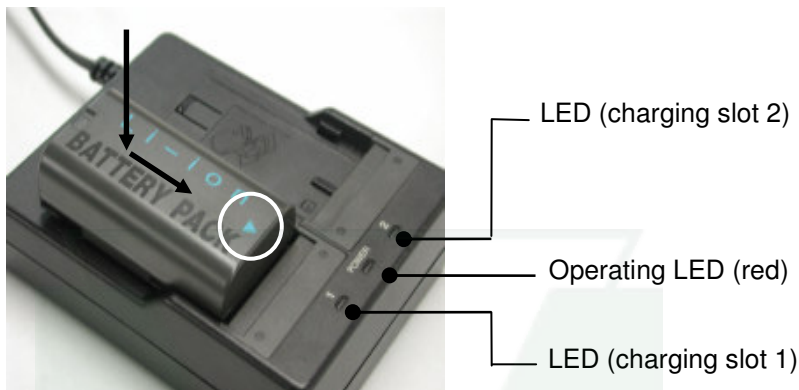
English



Element	Display	Status
Status LED	Off	Device ready for operation
	Green light	1. Power on (lights up for 5 seconds) 2. Power off (lights up for 0.5 seconds)
	Orange light	Battery voltage is low - printing still possible
	Red light	Battery voltage is low - printing no longer possible
	Flashing red light	Possible error: 1. The paper cover is open 2. No thermal paper in the printer 3. Other errors, e.g. the printer is damaged
Reception LED	Flashing green light	Communication working

4 Correct start-up

4.1 Charging the battery



Insert the rechargeable battery (direction is shown in the photo). The green flashing LED indicates that charging is in progress. The constant green light indicates that the battery is fully charged. You can put batteries in both charging slots. Charging takes around 2 hours per battery.



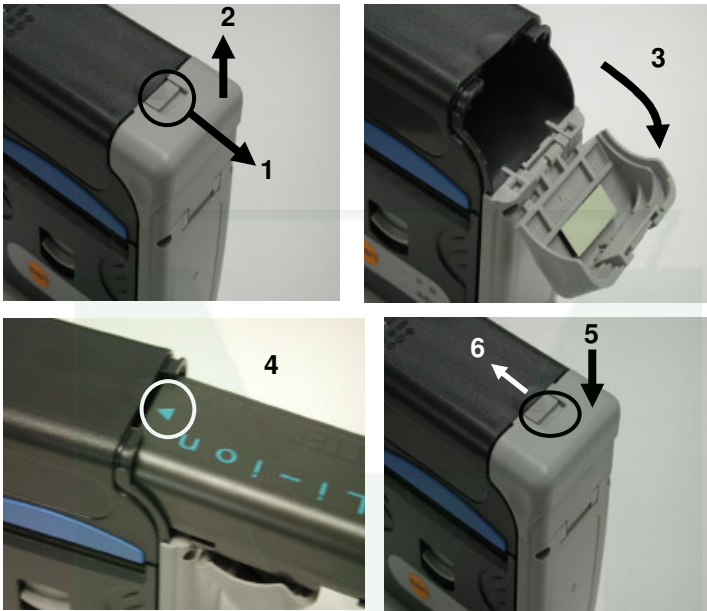
Before first use, charge the battery for at least 100 minutes. In order to increase the product life, the battery should be removed from the charger when charging is complete.



Patersstraat 106-108
2300 Turnhout
Tel: 014/42.55.99
Fax: 014/42.32.64

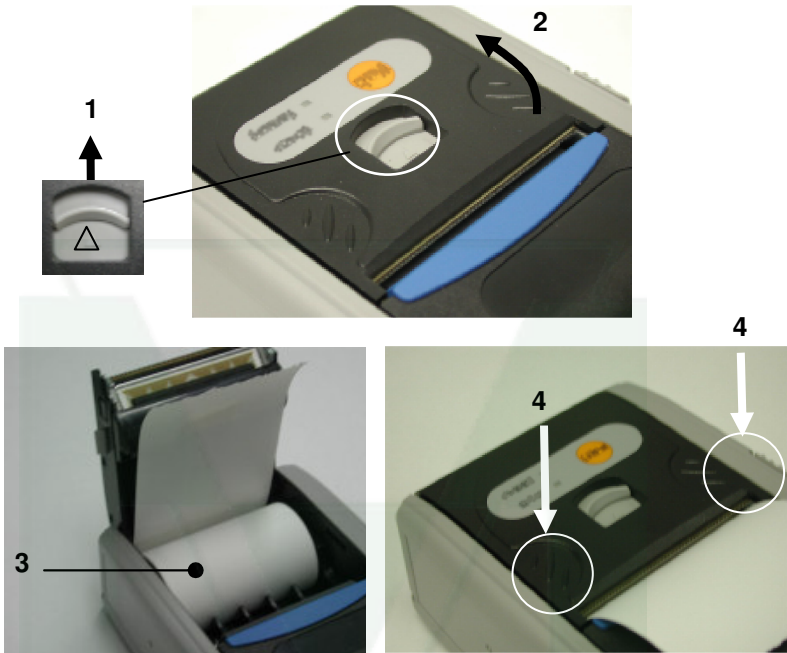
BTW BE 0415.638.961
Rek: 230-0026460-96
info@vanmechelen.be
www.vanmechelen.be

4.2 Inserting the battery

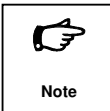


- 1 Push the lock of the battery compartment forwards.
- 2 Pull the battery compartment cover up.
- 3,4 Open the battery compartment and insert the battery.
- 5 Snap the battery compartment shut and push down.
- 6 Push the lock of the battery compartment cover forwards.

4.3 Inserting the thermal paper roll



- 1,2 Push the lock of the paper cover back and open the cover.
- 3,4 Ensure that the thermal paper is tightly rolled and insert it (see diagram), then completely close the cover.



If the thermal paper has been inserted incorrectly, no imprint will be visible. If this is the case, turn the thermal paper over.

4.4 Cleaning the thermal head and the rubber roller



Thermal head



Rubber roller

Switch the printer off and open the paper cover. Remove the dust or dirt from the thermal head or the rubber roller areas with a soft cloth or cotton bud slightly soaked in ethanol.



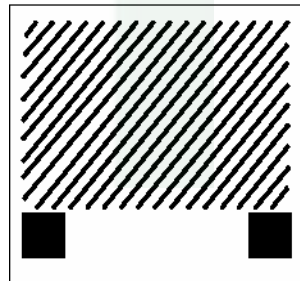
Note

Do not use abrasive fluids for cleaning.

4.5 Producing a test print

In order to check that the print image function is working properly, hold the “feed” button down and switch the printer on.

The test printout contains the graphic print image and the appliance data, enabling you to check the print quality.



Note

The Bluetooth® interface is deactivated after the test printout. The interface is reactivated by switching the printer off and on again.

5 Quality thermal paper KANZAN KPR 540

Orderman guarantees a service life of 25km for the print head of your Orderman mobile printer – but only when you use Orderman KANZAN KPR 540 thermal paper.

Having carried out extensive testing on the effects of paper on the print head and the mechanism, we now recommend using only KANZAN KPR 540, with the Orderman logo on the reverse.

Your benefits

- Printouts (i.e. receipts) are legible for longer on KANZAN KPR 540 thermal paper, and can therefore be archived for longer than printouts on standard paper. Where this type of paper is used, Orderman guarantees an archive period of at least 10 years (assuming proper storage).
- The very high dynamic sensitivity of the thermal coating ensures outstanding thermoprinting image quality, even under low (battery-saving) energy settings. This increases the service life of the thermal printer.
- Guaranteed service life of 25km for the print head of the Orderman mobile printer.
- The paper has a low gsm value, and therefore minimal thickness. This maximises the metre output of the compact Orderman mobile printer.

We cannot guarantee the stated service life of the printer where other paper types are used; this can cause damage or soiling to the print head. That's why using KANZAN KPR 540 every time means a long and productive partnership with your Orderman mobile printer.

6 Technical data

Mobile Printer	Technical data
Print process	High speed thermal printer
Print speed	Max. 80mm / sec
Thermal head product life	25Km when using the original Orderman thermal paper KANZAN KPR540
Communication	<u>Bluetooth</u> ® V1.1 (class 2) 2.4GHz
Thermal paper width	Roll width: 57mm Roll direction – thermal coating outwards
Print width	48mm (384 dots / line), graphic enabled
Printer dimensions	88mm x 102mm x 43mm
Weight	280g (without thermal paper, plus battery)
Operating temperature	0° to 40°
Battery	
Technology	Lithium ion 7.2V
Capacity	1,150mAH
Dimensions	70mm x 38mm x 20mm
Weight	90g
Charger	
Dimensions	94mm x 122mm x 35mm
Weight	270g
Mains voltage	100V-240v / 50Hz-60Hz

7 Connection of the Mobile Printer to the Handheld Device

Using the Bluetooth interface built into the Orderman Max2plus or Leo2plus, you can print out all receipts right next to the customer on an Orderman mobile printer.

7.1 Orderman Max2plus Synchronization with the Orderman Mobile Printer

In order to synchronize an Orderman Max2plus with the Orderman mobile printer, press a finger anywhere on the touch surface while switching on the Orderman Max2plus at the on / off button.

Keep pressing your finger on the touch surface and use the top left corner of the Orderman Max2plus casing to briefly touch the infrared window of the printer, which has to be switched on.



The screen will show that the printer has been recognized and synchronized.

Now remove your finger from the touch surface.

The synchronization of the Orderman mobile printer with the Orderman Max2plus will begin. When it is finished, an automatic test print will be produced on the printer.

You can repeat the synchronization at any time or change to a different Orderman mobile printer.

7.2 Orderman Leo2plus Synchronization with the Orderman Mobile Printer

In order to easily synchronize an Orderman Leo2plus with the Orderman mobile printer, press the "F4" key and keep it pressed while switching on the Orderman Leo2plus at the on / off button.

Using the top left corner of the Orderman Leo2plus casing, briefly touch the infrared window of the printer, which has to be switched on.



The screen will show that the printer has been recognized and synchronized.

The synchronization of the Orderman mobile printer with the Orderman Leo2plus will begin. When it is finished, an automatic test print will be produced on the printer.

You can repeat the synchronization at any time, or change to a different Orderman mobile printer.

8 Declarations of conformity

We hereby declare that this printer corresponds to basic requirements and other relevant specifications in accordance with the guideline 1999/5/EC.

Declaration of conformity – CE marks

This appliance corresponds to the requirements of the following European Community guidelines: R&TTE-guideline 1999/5/EC

This declaration is based on the conformity of products with the following standards:

- EN 60950: 2000
 - EN 300,328: 2003
 - EN 301 489-1: 2002; EN 301 489-17: 2002
-



Patersstraat 106-108
2300 Turnhout
Tel: 014/42.55.99
Fax: 014/42.32.64

BTW BE 0415.638.961
Rek: 230-0026460-96
info@vanmechelen.be
www.vanmechelen.be

8 Déclarations de conformité

Par la présente, nous déclarons que cette imprimante est conforme aux exigences essentielles et autres normes en vigueur prévues dans la directive 1999/5/CE.

Déclaration de conformité – Marquage CE

Cet appareil est conforme aux exigences fixées par la directive 1999/5/CE du Parlement européen et du Conseil concernant les équipements hertziens et les équipements terminaux de télécommunications.

Cette déclaration est basée sur la conformité du produit avec les normes suivantes:

-EN 60950 : 2000

-EN 300 328 : 2003

-EN 301 489-1 : 2002; EN 301 489-17: 2002



Patersstraat 106-108

2300 Turnhout

Tel: 014/42.55.99

Fax: 014/42.32.64

BTW BE 0415.638.961

Rek: 230-0026460-96

info@vanmechelen.be

www.vanmechelen.be