

## INSTALLATION MANUAL SIBAKZOS45

### General

Check the contents of the box with the parts list to make sure all components are included.

### Tools needed for assembly

(2) 10 mm wrenches

(2) ½ in wrenches

### Attaching the Handle, Linkage Plate Assembly, and Lower Linkage | Figures 2 – 6

- A. Remove contents from box and place the preassembled portion of the spreader upright on its wheels
- B. Slide the Handle onto the spreader frame & line up the holes
- C. Carefully insert the Lower Linkage into the Restrictor Plate underneath the Hopper as shown. (The Lower Linkage has two bent ends & the Upper Linkage has one threaded end).
- D. Insert the other end of the Lower Linkage into the front hole on the Linkage Plate Assembly
- E. Attach the Linkage Plate Assembly and Handle to the Frame using two M6x40 bolts as shown. Figure 6 shows the lower linkage assembled (for reference).

#### Note:

The Lower Linkage must be attached to the restrictor and the Linkage Plate Assembly before the Assembly is attached to the frame. If the Linkage Plate Assembly is attached to the Frame without the Lower Linkage, the Lower Linkage will be very difficult to assemble and may cause the restrictor plate to be broken during assembly

### Attach control Handle Assembly, Upper Linkage, & Rear Deflector | Figure 7 & 8

- F. Mount the Control Handle Assembly to the Handle using two M6 x 40 bolts as shown.
- G. Insert the Upper Linkage into the Control Handle as shown.
- H. Thread one Jam Nut so that the Restrictor Plate underneath the Hopper is fully open when the Control Handle is at “30”. Assemble the second jam nut in this position to lock the linkage in place;
- I. Verify that the Restrictor Plate may be fully closed by pushing the Control Handle forward.
- J. Using two M6x20 bolts, attach the rear deflector.

### Final Assembly

- A. Check And Tighten All Fasteners – Make sure the Pinion and Gear mesh well and turn freely when pushing and pulling the unit.
- B. Place the Screen in the hopper.
- C. Install the Rain Cover on the hopper.

### Operation

1. Before filling the Hopper, ensure that the Restrictor Plate is fully closed and the screen is in place.
2. Move and tighten the stop bolt to the desired setting.
3. Begin moving forward with the spreader.

4. Pull the Control Handle back to the stop bolt to open Restrictor Plate and allow material to flow.
5. Before stopping, push the Control Handle fully forward to stop flow..

### Maintenance

1. The Hopper and Spinner should be completely emptied and cleaned before storage.
2. The Spreader should be washed and dried before storage.
3. Check that the Restrictor Plate and Linkage move freely. Clear out any debris between the Restrictor Plate & the Hopper.
4. Check that there is no debris in the Gears & that they move freely.
5. Check torque of all fasteners on a monthly basis.

### Operation Notes:

1. The spreader is designed to be operated at a brisk walking pace (approx. 3 mph). Walking slower or faster will alter the distribution pattern & amount of the material, as will the moisture content of the material & other environmental factors.
2. Grease may be applied to the Pinion & Large Drive Gear as desired.

### Warning

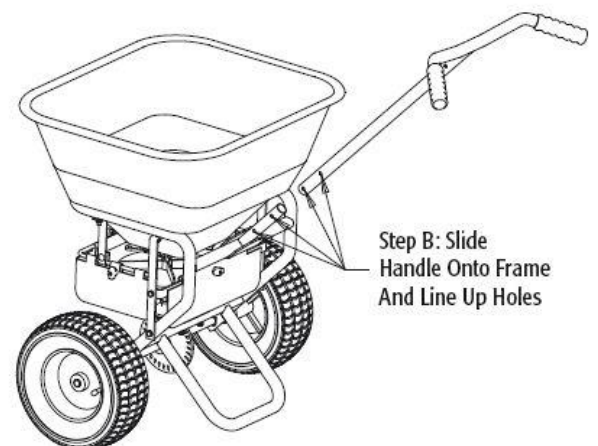
When filling hopper, make certain there are no large objects within the material. Objects larger than the openings in the Screen may cause the spreader to clog or even damage the drive system. Never leave material in the hopper when not in use.

**Figure 1 - Contents of Box**



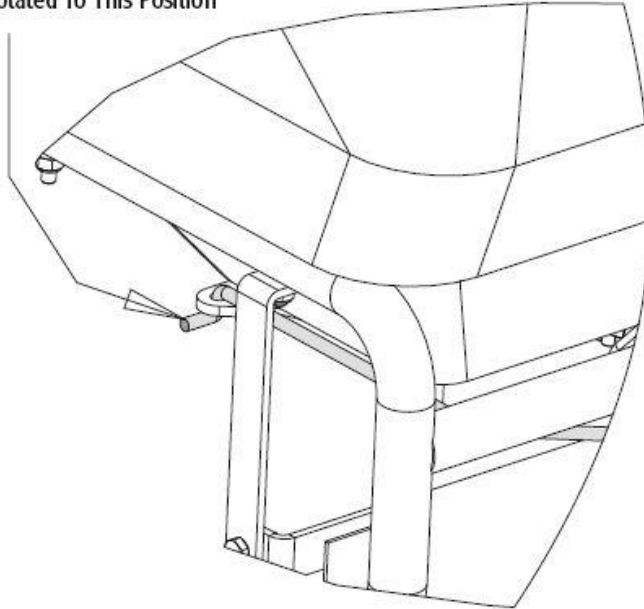
Rain Cover And Hardware Kit Are Not Shown

**Figure 2**

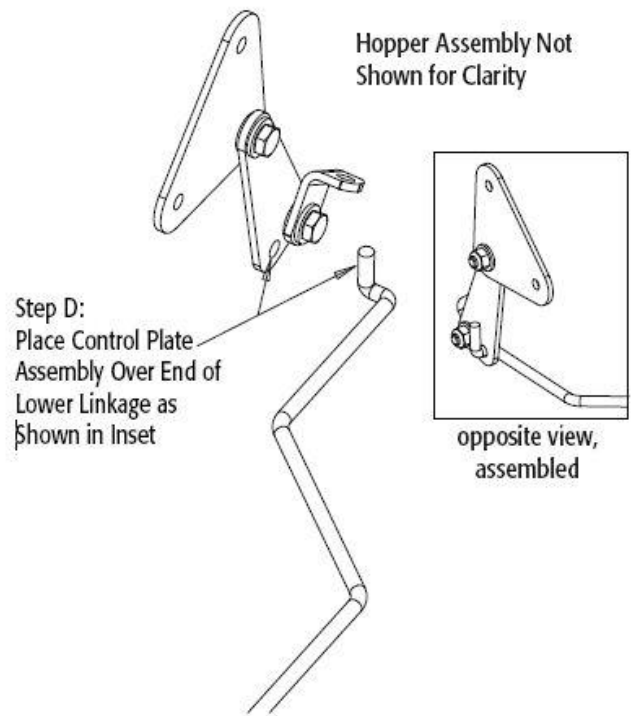


**Figure 3**

Step C:  
Insert Lower Linkage Into Restrictor  
Plate. This End To Be Installed  
Down Into Control Plate And Then  
Rotated To This Position

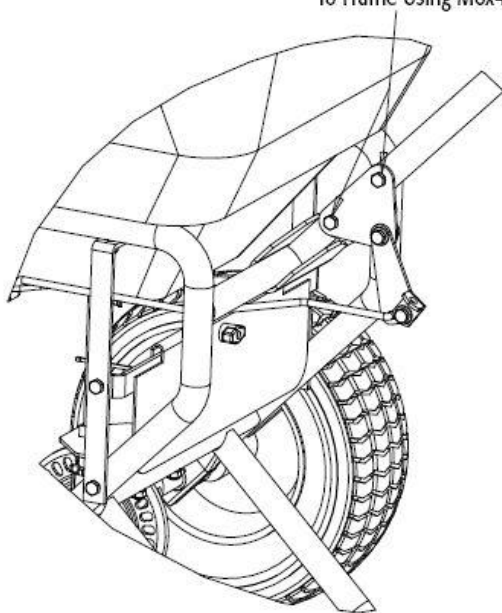


**Figure 4**

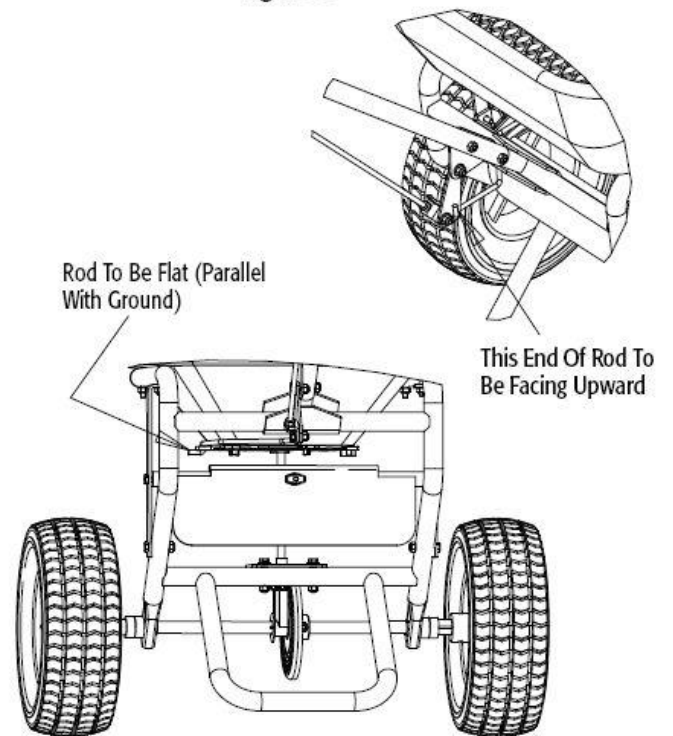


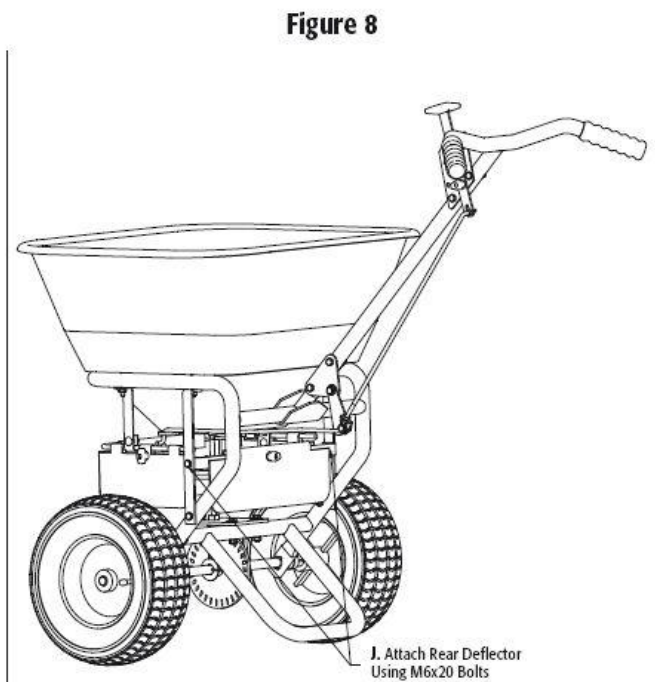
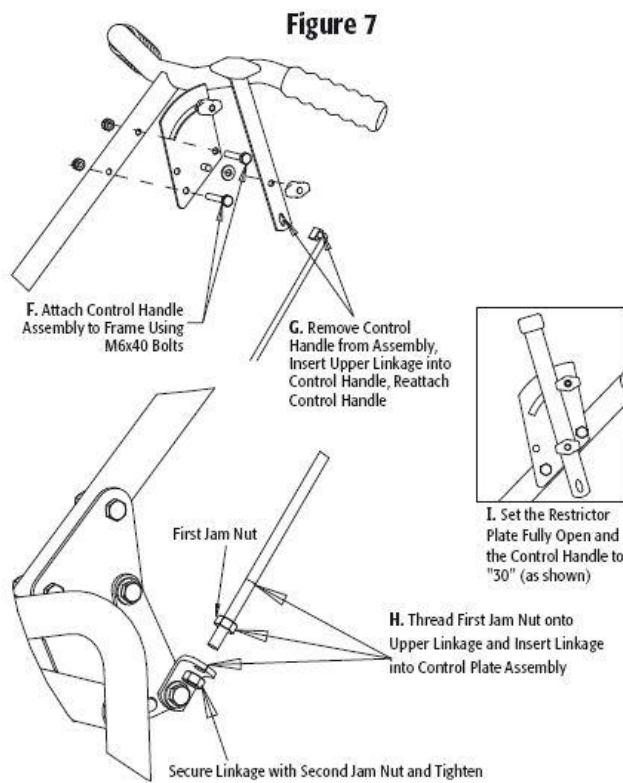
**Figure 5**

Step E  
Attach Control Plate Assembly  
To Frame Using M6x40 Bolts

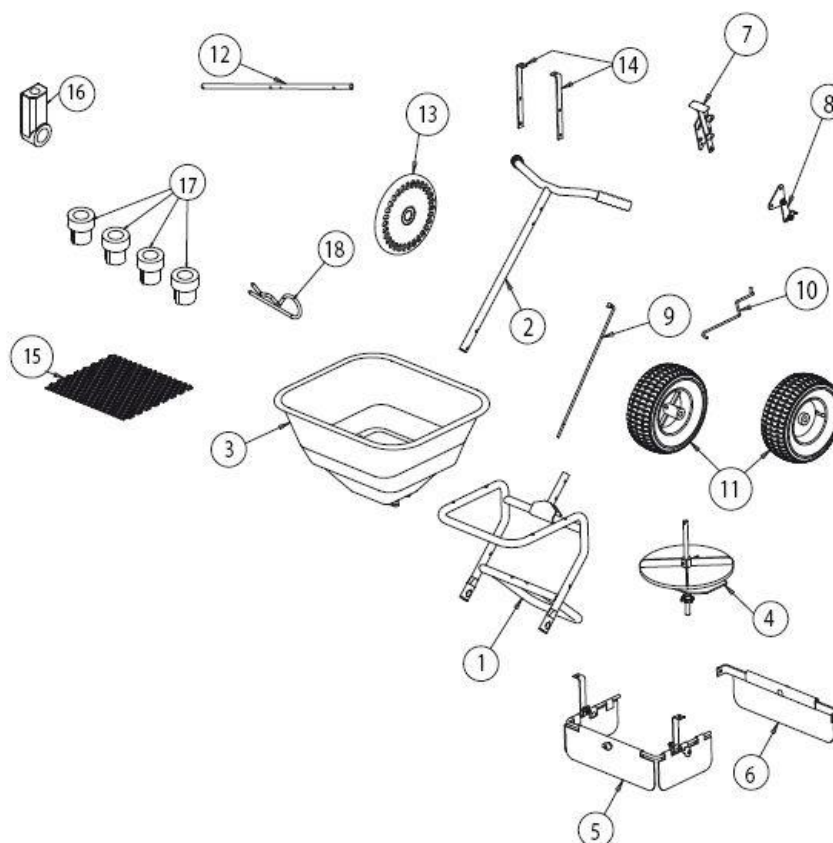


**Figure 6**





### List of parts



| ITEM      | QTY      | DESCRIPTION                    |
|-----------|----------|--------------------------------|
| <b>1</b>  | <b>1</b> | <b>Frame</b>                   |
| <b>2</b>  | <b>1</b> | <b>Handle</b>                  |
| <b>3</b>  | <b>1</b> | <b>Hopper Assembly</b>         |
| -         |          | Hopper                         |
| -         |          | Restrictor Plate Assembly      |
| <b>4</b>  | <b>1</b> | <b>Spinner Assembly</b>        |
| -         |          | Spinner Shaft Assembly         |
| -         |          | Spinner                        |
| -         |          | Bracket                        |
| -         |          | Bushing                        |
| -         |          | Spacer                         |
| <b>5</b>  | <b>1</b> | <b>Deflector Assembly</b>      |
| <b>6</b>  | <b>1</b> | <b>Rear Deflector Assembly</b> |
| <b>7</b>  | <b>1</b> | <b>Control Handle Assembly</b> |
| <b>8</b>  | <b>1</b> | <b>Linkage Plate Assembly</b>  |
| <b>9</b>  | <b>1</b> | <b>Upper Linkage</b>           |
| <b>10</b> | <b>1</b> | <b>Lower Linkage</b>           |
| <b>11</b> | <b>2</b> | <b>Wheels</b>                  |
| <b>12</b> | <b>1</b> | <b>Axle</b>                    |
| <b>13</b> | <b>1</b> | <b>Drive Gear</b>              |
| <b>14</b> | <b>2</b> | <b>Hopper Support Bracket</b>  |
| <b>15</b> | <b>1</b> | <b>Screen</b>                  |
| <b>16</b> | <b>1</b> | <b>Spinner Shaft Support</b>   |
| <b>17</b> | <b>4</b> | <b>Axle Bushings</b>           |
| <b>18</b> | <b>1</b> | <b>Agitator Pin</b>            |
| <b>19</b> | <b>1</b> | <b>Hardware Bag</b>            |
| -         | <b>1</b> | <b>Rain Cover</b>              |