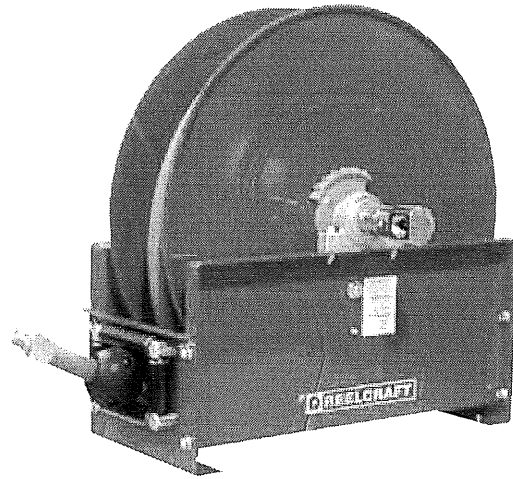


Operating Instructions

Series D9000 Spring Driven Hose Reels

Low Pressure Model Numbers:

D9200 OLP	D9305 OLP	D9375 OLP	D9450 OLP
D9275 OLP	D9330 OLP	D9399 OLP	
D9299 OLP	D9340 OLP	D9400 OLP	
D9300 OLP	D9350 OLP	D9430 OLP	



Dimensions

	Size Index #	
	1	2
A	26 1/4"	26 1/4"
B	24 1/8"	24 1/8"
C	4 3/4"	4 1/2"
D	12"	13 3/8"
E	7 3/4"	7 3/4"
F	22 1/4"	22 1/4"
G	12 1/4"	12 1/4"
H	13 7/8"	13 7/8"
J	26 3/8"	26 3/8"

See page 2 charts for size index number.

SAFETY

1. Models designed for fuel are coded with the prefix "F" i.e., "FD9400 OLP." Check name plate on the reel before installing.
2. Do not use reel at higher pressures or temperatures than listed on the back of this bulletin.
3. Remove all spring tension before beginning disassembly process.
4. Reel spring motor case is permanently sealed. Any attempt to remove the spring motor may cause serious injury.

INSTALLATION:

The swivel union is packed separately in the reel carton, use teflon tape to assure a satisfactory seal. A flexible hose connection must be used between the hose reel inlet and the source of supply to prevent possible misalignment and binding. Non flexible connections will void the warranty, pressure rating of inlet hose must be equal to or more than the pressure rating of the reel. Consult factory for proper spring when installing reels above 16 ft.

LUBRICATION:

Hose reel spring and bearings are factory lubricated and require no further lubrication.

REPLACING HOSE:

1. Wind spool flange clockwise-facing swivel-until spring is tight.
2. Back off three turns and latch.
3. Insert hose through roller guide.
4. Connect hose fitting to female outlet ell.

ADJUSTMENTS:

To adjust spring tension, add or remove wraps of hose from the spool, one wrap at a time until desired tension is obtained.

REPAIRS:

Extensive repairs should be performed only by an authorized serviceman or factory to avoid damage which may void your warranty. Remove all spring tension before beginning disassembly process.

MODIFICATION:

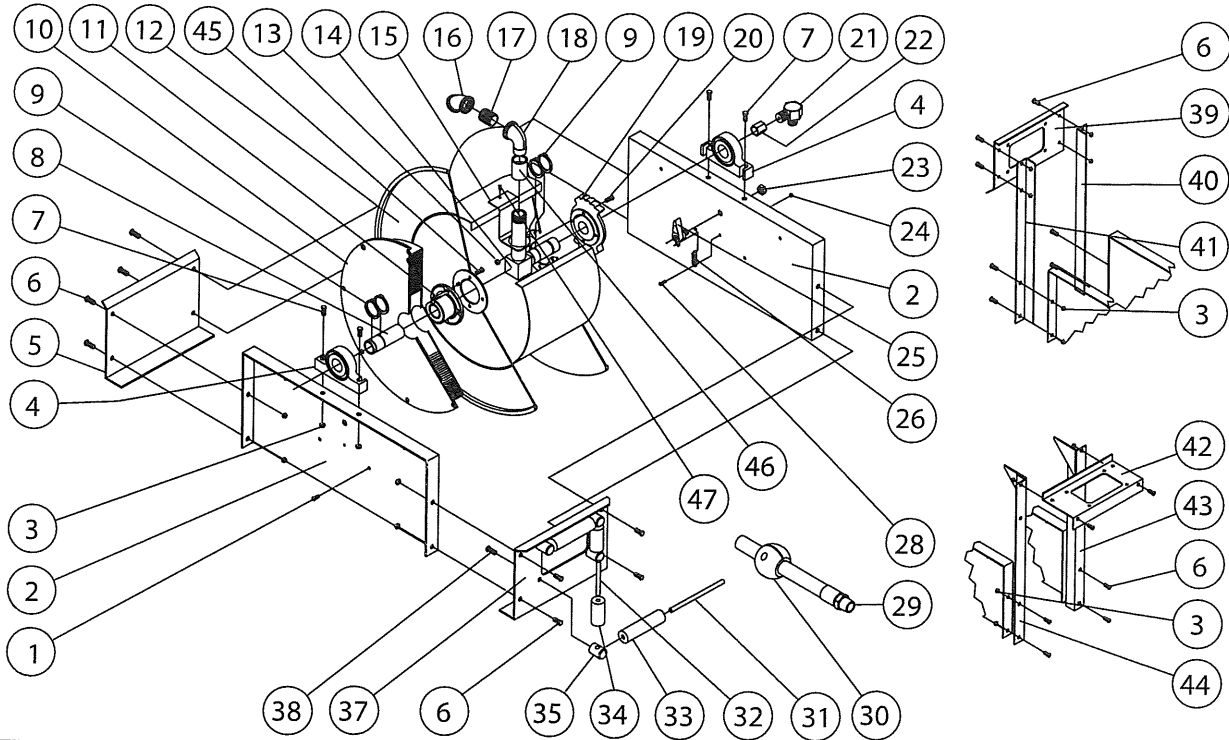
Hose latching mechanism can be removed for constant tension applications.

Form# 835-696 Rev: 6/2013

Reelcraft Industries, Inc. • 2842 E Business Hwy 30, Columbia City, IN 46725
 Ph: 800-444-3134 / 260-248-8188 • Fax: 800-444-4587 / 260-248-2605
 Customer Service: 855-634-9109 • reelcraft@reelcraft.com • www.reelcraft.com



Series D9000 Spring Driven Hose Reels



Item #	Part #	# Req	Description	Item #	Part #	# Req	Description	Item #	Part #	# Req	Description
1	S2-41	4	1/4-20 x 1/2" hex screw	13	S281-4	8	1/4-20 hex flange nut	28	S393-2	1	10-32 shoulder screw
2	270009	2	Side frame	14	S270054	1	1" Inlet tube	31	S270016	2	Guide roller pin - long
3	S281-6	2	3/8-16 hex flange nut	15	270029	1	Hose outlet support	32	S270015	2	Guide roller pin - short
4	270058	2	Pillow block	19	S270001	1	Latch ratchet hub	33	262436-5.468	2	Guide roller
6	S44-2	8	3/8-16 x 5/8" mach. screw	20	S2-42	4	1/4-20 x 5/8" hex screw	34	262436-2.968	2	Guide roller
7	S44-8	4	3/8-16 x 1 3/4" screw	23	S280-8	1	1/2-20 hex flange nut	35	S270014	4	Guide roller post
8	270060	1	Support shaft	24	S82-15	1	10-32 x 3/8" nyloc nut	38	S2-51	4	5/16-18 x 1/2" hex screw
9	S140-31	6	Snap ring	25	S600018	1	Latch pawl assembly	45	S328-29	4	Self tapping screw
10	270105	1	Spring & case assembly	26	S260067	1	Latch spring	47	S32-136	1	#10 x 3/8" self tap screw
11	270002	1	Spring arbor								

Item #	Description	# Req	D9200 OLP	D9275 OLP	D9299 OLP	D9300 OLP	D9330 OLP	D9340 OLP	D9350 OLP	D9375 OLP	D9305 OLP	D9399 OLP	D9400 OLP	D9430 OLP	D9450 OLP
5	End frame support	1	270012	270012	270012	270012	270012	270012	270012	270012	262104	262104	270012	270012	270012
12	Sheave assembly	1	270107	270107	270107	270107	270107	270107	270107	270107	601081	601081	270106	270106	270106
16	45° Elbow	1	None	None	None	None	None	None	None	None	None	None	262452	262452	262452
17	Bushing	1	300080	300080	300080	270025	270025	270025	270025	270025	270025	270025	None	None	None
18	90° Elbow	1	270028	270028	270028	270028	270028	270028	270028	270028	270028	270028	262451	262451	262451
21	Swivel assembly	1	600888	600888	600888	S602026	S602026	S602026	S602026	S602026	S602026	S602026	S600682-1	S600682-1	S600682-1
22	Coupling reducer	1	S289-5	S289-5	S289-5	S289-6	S289-6	S289-6	S289-6	S289-6	S289-5	S289-5	None	None	None
29	Hose assembly	1	None	601020-75	601020-100	None	601026-30	601026-40	601026-50	601026-75	None	601026-100	None	601027-30	601027-50
30	Hose bumper	1	None	A2-HR1005	A2-HR1005	None	A3-HR1005	A3-HR1005	A3-HR1005	A3-HR1005	None	A3-HR1005	None	A4-HR1005	A4-HR1005
37	Hose guide roller plate	1	270011	270011	270011	270011	270011	270011	270011	270011	262103	262103	270011	270011	270011
39	Guide roller plate SW	1	270045	270045	270045	270045	270045	270045	270045	270045	None	None	270045	270045	270045
40	SW support bracket	1	270043	270043	270043	270043	270043	270043	270043	270043	None	None	270043	270043	270043
41	SW support bracket	1	270042	270042	270042	270042	270042	270042	270042	270042	None	None	270042	270042	270042
42	Guide roller plate TW	1	270044	270044	270044	270044	270044	270044	270044	270044	None	None	270044	270044	270044
43	TW support bracket	1	270041	270041	270041	270041	270041	270041	270041	270041	None	None	270041	270041	270041
44	TW support bracket	1	270040	270040	270040	270040	270040	270040	270040	270040	None	None	270040	270040	270040
46	Coupling	1	None	None	None	None	None	None	None	None	None	None	262453	262453	262453
--	Hose ID and length	--	None	1/2" x 75'	1/2" x 100'	None	3/4" x 30'	3/4" x 40'	3/4" x 50'	3/4" x 75'	None	3/4" x 100'	None	1" x 30'	1" x 50'
--	Working pressure	--	500 PSI	300 PSI	300 PSI	500 PSI	250 PSI	250 PSI	250 PSI	250 PSI	500 PSI	250 PSI	500 PSI	250 PSI	250 PSI
--	Max. temperature	--	210° F	150° F	150° F	210° F	150° F	150° F	150° F	150° F	210° F	150° F	210° F	150° F	150° F
--	Size Index Number	--	1	1	1	1	1	1	1	1	2	2	1	1	1