



SERVICE MANUAL

XBR25

XBR55

Table of Contents

Troubleshooting Guide

| | |
|------------------------|---|
| Electronic System..... | 3 |
| Mechanical System..... | 3 |

Repair Procedures

| | |
|--|---|
| Procedure 1 (Test adapter for voltage)..... | 4 |
| Procedure 2 (Check harness for voltage)..... | 4 |
| Procedure 3 (Check for DC voltage from console)..... | 4 |
| Procedure 4 (Tighten seat carriage)..... | 5 |
| Procedure 5 (Engineering mode)..... | 6 |

XBR Series Warranty

| | |
|-----------------------------------|----|
| Contacting Technical Service..... | 7 |
| Treadmill Warranty..... | 8 |
| Warranty Policy..... | 9 |
| Parts Order Form..... | 10 |
| Warranty Labor Credit Form..... | 11 |

XBR25

| | |
|--------------------|---------|
| Exploded view..... | 12 |
| Parts list..... | 13 - 15 |

XBR55

| | |
|--------------------|---------|
| Exploded view..... | 16 |
| Parts list..... | 17 - 20 |

Bike Troubleshooting

ELECTRONIC SYSTEM

No power

There is no power to the console.

1. Unit must be plugged into an outlet with power.
2. Test adapter for DC voltage using volt meter. (procedure 1)
3. Remove the console and test the wire harness with a volt meter for DC voltage. (procedure 2)
4. Make sure all wires are plugged into the controller securely.

No resistance change

1. Remove side covers to access the controller.
2. Check for DC voltage where main harness plugs into controller. (procedure 3)

MECHANICAL SYSTEM

Loose seat carriage

1. See procedure 4.

Bike Troubleshooting

PROCEDURE 1: Test Adapter for voltage

- 1.1 Turn meter on setting to test for AC voltage.
- 1.2 Put leads in the two holes in adapter plug.
- 1.3 There should be at least 24 volts.
- 1.4 If you do have voltage but no power to display, go to procedure 2. If you dont have the voltage, replace the adapter (assuming the outlet has power).

PROCEDURE 2: Test harness for voltage

- 2.1 Turn meter on setting to test for DC voltage.
- 2.2 Remove console.
- 2.3 Put one lead on pin #2 and the other lead on pin #3. There should be around 6 volts.
- 2.4 If there is voltage there but no power to the display, the console needs to be replaced.

PROCEDURE 3: Test for DC voltage from console

- 3.1 Remove the cover beneath the seat to access the controller.
- 3.2 Turn the meter on setting to test for DC voltage.
- 3.3 Leave the harness connected to the controller and put the leads on the 2nd and 5th wires. (You will probably need to remove some of the glue from the back of the harness)



- 3.4 Press start and set the resistance to level 1. As you increse the resistance you should see the voltage reading increase as well.
- 3.5 If the reading is not going up as you go up in resistance, the problem is either the console or the harness. If the readings are what they should be, go to next step.
- 3.6 With meter still on DC setting, put leads into the back of the 2 pin connector pictured below. This is the connector for the wires that go to the brake coil.



- 3.7 At level 1 the voltage reading should be zero. At level 2 and above, if you get any reading the controller is working.
- 3.8 If you dont hav any voltage, the controller needs to be replaced. If there is voltage but still no resistance, the brake coil needs to be replaced.

Bike Troubleshooting

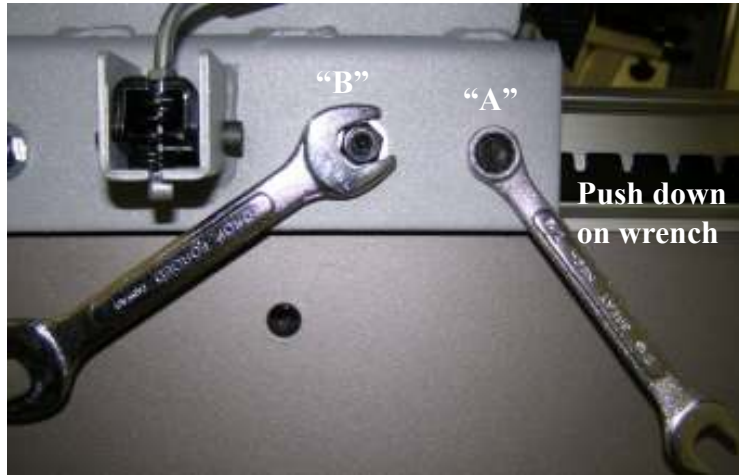
PROCEDURE 4: Tighten seat carriage

If the seat assembly on the recumbent bike is loose and wobbles from side to side, follow these instructions to tighten it up.

(Front wheel assembly on Left side)



(Rear wheel assembly on Left side)



1. Loosen the nyloc nut (B) with a 13mm wrench.
2. Press down on (A) with an 11mm wrench.
3. While pressing down on (A), tighten the nyloc nut (B).
4. Use this procedure on all 4 seat wheel assemblies.

There are two wheels on each assembly. By pressing down on (A) you are turning the assembly so that the inside wheel (which is connected to "B") is pressed to the top of the track while the outer wheel (which is connected to "A") remains pressed to the bottom of the track.

Bike Troubleshooting

PROCEDURE 5: Engineering Mode

1. Press and hold the START, ENTER, and STOP buttons until display beeps.
2. "ENGINEERING MODE" will scroll across the screen, press ENTER.
3. Press the UP and/or DOWN buttons to scroll through the following sub menus:
 - Key Test
 - Display Test
 - Functions
 - Security
 - Factory Set
 - Exit
4. Press ENTER to access the desired program.
5. Press STOP to exit Engineering Mode.

- Key Test

Press ENTER. Press all buttons on console.

- Display Test

Press ENTER. Console will test each segment or LED. Look to see if there are any burned out or not working.

- Functions

| | |
|----------------------------|--|
| Sleep Mode On/Off ----- | Press ENTER to turn on or off. |
| Pause Mode On/Off ----- | Press ENTER to turn on or off. |
| Odometer Reset ----- | Press ENTER to reset. |
| Units English/Metric ----- | Press ENTER to change. |
| Beep Sound On/Off ----- | Press ENTER to turn on or off. |
| Brake Test----- | Press ENTER to begin the test. |
| Bike or Elliptical----- | Press ENTER to switch from one to the other. |
| Exit ----- | Press ENTER to exit the functions menu. |

- Security

Child Lock On/Off ----- Press ENTER to turn on or off.

- Factory Set

Press ENTER to go back to original factory settings. This will reset saved user programs.

- Exit

Press ENTER to exit Engineering Mode.

CONTACTING CUSTOMER SERVICE

It is the responsibility of the Dealer to assemble and setup any Spirit product they have sold, as well as diagnose problems and perform service, regardless of the product's location. Recognizing the importance of insuring the consumer's satisfaction, Spirit technical support will always be available to assist the Dealer in diagnosing a problem. All warranties are valid from the original date of purchase by the original purchaser.

PARTS ORDERS

Fax 870-930-9013

Fax your order using a completed parts purchase order to (870) 930-9013. Please do not call to place your parts orders, fax only. Service technicians are available to assist in the repair of treadmills. If taking parts orders by telephone, technical service calls will go unanswered. **Standard shipping is FedEx ground. If you need an order shipped by another method, you must pay for shipping.**

CUSTOMER SERVICE

Call 800-258-4555

Calling from Store Location

Dial 1 to reach the first available technician, or select the extension number for a particular technician. ***You must have the serial number of the machine when you call.***

- Charles Wood -----Customer Support ext. 626
- Terry Jordan ----- Customer Support ext. 627
- Kevin Thomas ----- -Customer Support ext. 628
- Nathan Price ----- Customer Support ext. 629
- Carla Nichols ----- -Customer Support ext. 631
- Travis Lawrence -----Customer Support ext. 633
- Lonnie Haygood-----Customer Support ext. 636
- Corey Lemieux-----Customer Support ext . 637

If the technician you choose is unavailable, leave a detailed message. Leave only one message. Do not call another extension. Do not leave multiple messages. This results in a duplication of effort and keeps our technicians from assisting you and other customers in a prompt manner.

Calling from Customer Location

Dial 0 for an operator. Relay to the operator that you are a dealer and in a customer's home. You will be assisted by the first available technician.

BIKE WARRANTY

Spirit Manufacturing Inc. warrants all its bike parts for a period of 5 years from the date of retail sale, as determined by sale receipt, or in the absence of a sales receipt eighteen (18) months from the original factory shipping date, whichever comes first. Spirit's responsibilities include providing new or remanufactured parts, at Spirit's option, and technical support to our independent dealers and servicing organizations. In the absence of a dealer, or service organization, this warranty will be administered by Spirit directly to a consumer. An extended warranty period applies to the following components:

| <u>Home use</u> | <u>XBR25</u> | <u>XBR55</u> |
|-----------------------------|---------------------|---------------------|
| Labor | 1 Year | 2 Years |
| Frame weldments | Lifetime | Lifetime |
| Brake | Lifetime | Lifetime |
| All Other Components | 5 Years | 5 Years |

WARRANTY POLICY

Parts Returns

It is very important that you have not only the model number but also the serial number on hand when placing a parts order. If a serial number is provided at the time a warranty parts order is placed the required parts will be sent to you at no charge. If the unit is no longer covered under warranty the parts will be billed to you on 30 day payment terms.

If a warranty replacement part is required to be returned to Spirit it will be noted on the packing list included in your shipment. Also noted on the packing list will be the amount you will be invoiced if the parts are not returned within 30 days.

Parts Required to be Returned for Credit

Upper Electronics - XE Series

Paperwork Requirement: A copy of your invoice or packing list and diagnostic form (if included with replacement part) must be returned with the defective part to receive warranty consideration.

Warranty Labor Reimbursement Procedure

Complete Request for Warranty Labor Credit Form.

Fax completed form to (870) 930-9013.

Once Spirit has received your returned parts, your request will be processed and returned by fax to you.

What is Not Covered

- 1) Failures created due to improper installation or maintenance.
- 2) Repairs requiring only simple adjustments, fuses, or calibrations.
- 3) Damages sustained from shipping - Freight claim must be filed with your carrier.
- 4) Repairs that are made beyond the warranty period.
- 5) Repairs where the customer is paying the base labor fee to the dealer.
- 6) Units that are dealer stock or floor models.
- 7) Trips for diagnostic visit.
- 8) Residential units in a commercial setting.

Credit will not be issued for repairs in which:

- 1) Parts required for return are not returned to Spirit within 30 days.
- 2) All paperwork is not completed or returned.
- 3) Spirit confirms that work was not completed.

Warranty Labor Reimbursement Policy

Spirit has established a set of guidelines that are fair to both independent service companies and to Spirit. Our policy on labor warranty reimbursement is simple...we pay a one time flat completion fee of \$80 per service occurrence. Once all work required to complete the repair has been finished and all parts required for return have been returned to Spirit either credit or payment in the amount of \$80 will be issued to your company. The one-time flat completion fee of \$80 will be paid only when the repair is complete and the unit has been returned to proper working condition. If your company needs consideration for labor or trip fees that are higher than Spirit's standard fees, they will be evaluated on a case-by-case basis. (e.g. - travel to perform service work in Manhattan). Any change in the fee schedule must be approved in writing by Spirit before any work is performed.

For Dealers That Wish To Use Third Party Service

It is Spirit's policy that all dealers service products that they sell to end users. If your company chooses to use an independent company for service, you are responsible for all service work. Our labor reimbursement policies apply in every case and any charges in excess of Spirit's one time flat completion fee will be billed back to the selling dealer. In certain circumstances, we will work directly with an independent service company, but we will not pay for any service that deviates from our policy for dealers wishing to have this arrangement. Dealers will be responsible to the service company for all charges disallowed by Spirit. Any deviation from Spirit policy must be approved in advance in writing.



Fax to: **870-930-9013**

Attention: _____

PARTS PURCHASE ORDER

Fill in completely for processing.

All orders are shipped F.O.B. Spirit Mfg., Jonesboro, Arkansas.

| | | | | |
|--------------|------------|--------------|--------------|------------|
| Dealer Name | | Account No. | Ship to | |
| Street & No. | | Street & No. | | |
| City | State | Zip | City | State Zip |
| Phone Number | Fax Number | | Phone Number | Fax Number |

| Purchase Order No. | Dealer Buyer's Name | All parts ordered are considered stock orders unless a serial number is listed below each parts' description box. A serial number listed will qualify it for warranty <u>evaluation</u> . | | Date of Order |
|--------------------|---------------------|---|------------|---------------|
| Qty. | Part No. | Description | Unit Price | Amount |
| | | | | |
| | | | | |
| | | | | |
| | | | | |
| | | | | |
| | | | | |
| | | | | |
| | | | | |
| | | | | |
| | | | | |
| | | | | |
| | | | | |
| | | | | |

Order Completion - **Orders must be signed!**

If a part is not accompanied by a serial number, it will be assumed that the part order is for stock. We encourage all dealers to stock parts. Spirit will always be fair to all dealers on credit for parts. Spirit reserves the right to subject parts returns to a 20% restocking fee if Spirit determines that the dealer has excessively ordered parts randomly to repair a problem.

Buyer Signature _____ Date _____

Shipping Instructions: (All orders will be shipped via ground delivery unless otherwise indicated.) **Buyer will be responsible for all expedited shipping charges.**

Special Instructions: 2nd Day Air _____

Next Day Air _____

Saturday Delivery _____

Initial Your Special Shipping Instructions Here _____
(Orders for expedited shipping without initials will be shipped via ground delivery.)

REQUEST FOR WARRANTY LABOR CREDIT



P.O. BOX 2037 JONESBORO, ARKANSAS 72402

| |
|---|
| Labor Warranty <input type="checkbox"/> Spirit is responsible <input type="checkbox"/> |
|---|

| | | | |
|-----------------------|-------------------|-----------------------------|-----------|
| Date of Repair | Model# | Serial Number | |
| Service Company | Svc CoAcct Number | Owner's Name | |
| | | Owner's Address | |
| Selling Dealer Number | Selling Dlr Acct | Phone Number With Area Code | Date Sold |

Problem

Repair Done

| | | | | FACTORY USE ONLY | | | |
|----------|-------------|------------------|-----|------------------|------------|------------|---------|
| QUANTITY | PART NUMBER | PART DESCRIPTION | WTY | TEST RESULTS | UNIT PRICE | WORK ORDER | INVOICE |
| | | | | | | | |
| | | | | | | | |
| | | | | | | | |
| | | | | | | | |
| | | | | | | | |

| FACTORY USE ONLY | | |
|------------------|--|---|
| | | FREIGHT: |
| LABOR | | SHIPPING: |
| TRIP | | WARRANTY CREDIT WILL BE ISSUED TO DEALER ACCOUNT. |
| TOTAL LABOR | | |

ALL PARTS MUST BE RETURNED TO FACTORY
UNLESS INSTRUCTED OTHERWISE.

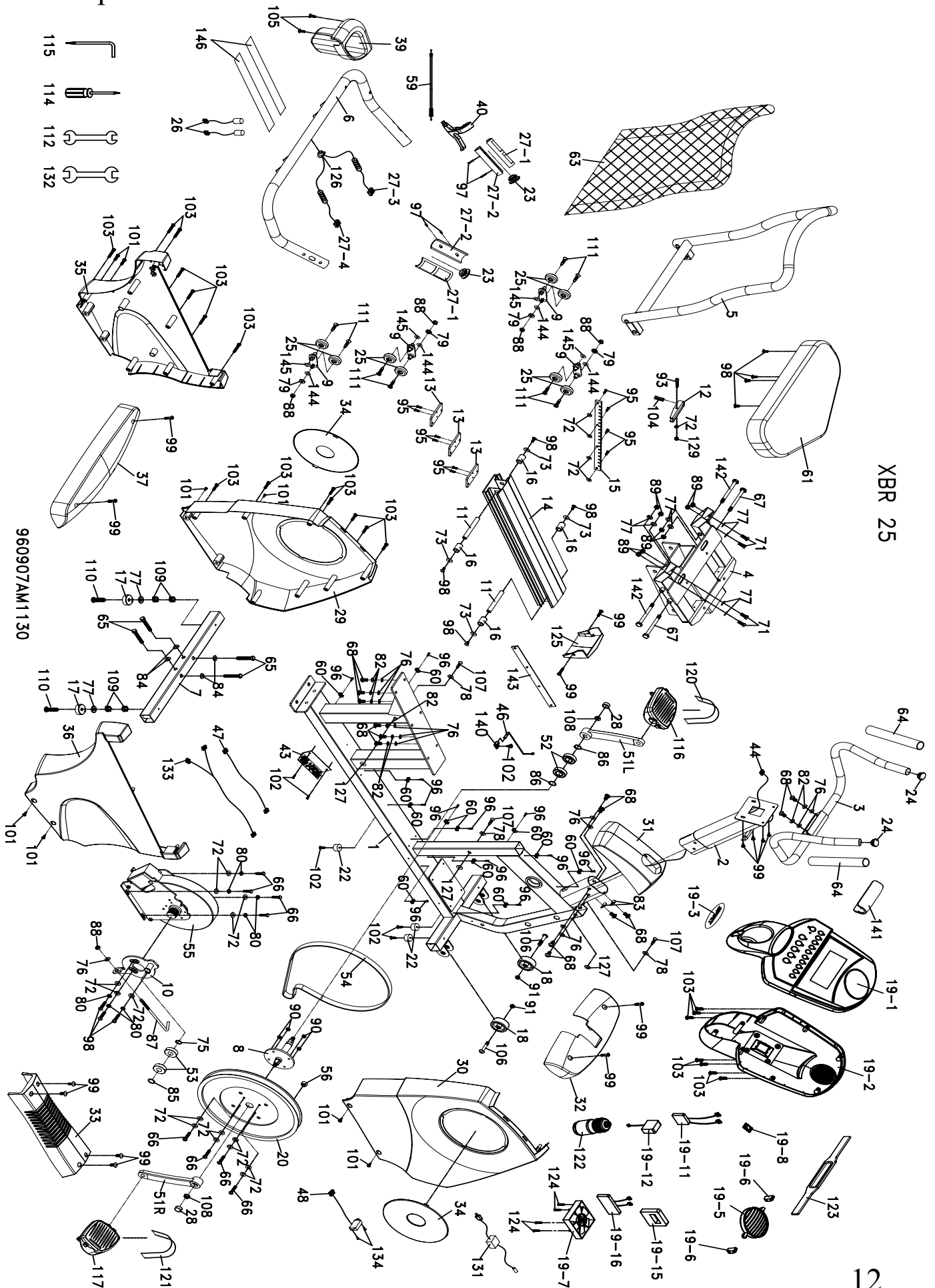
**CLAIMS MUST BE RETURNED TO SPIRIT
CORP. WITHIN 7 DAYS OF REPAIR.**

SHADED AREAS FACTORY USE ONLY

| |
|--|
| Authorization No. _____ _____ WARRANTY ADMINISTRATOR |
|--|

FAX TO SPIRIT (870) 930-9013

XBR25 Exploded View



XBR 25

XBR25 Part List

| Parts No. | Description | Part # |
|-----------|---|--------|
| 1 | Main Frame | 002160 |
| 2 | Console Mast | 002136 |
| 3 | Handle Bar Front | 002185 |
| 4 | Seat Carriage | 002188 |
| 5 | Seat Back Frame | 002189 |
| 6 | Handle Bar Seat | 002192 |
| 7 | Rear Stabilizer Bar | 002005 |
| 8 | Drive Pulley Axle | 002006 |
| 9 | Seat Wheel Adjustment Plate | 002007 |
| 10 | Idler Wheel Assembly | 002159 |
| 11 | Seat Stop Axle | 002009 |
| 12 | Seat Position Latch | |
| 13 | Backing Plate | |
| 14 | Aluminum Seat Track | 002128 |
| 15 | Seat Position Index Plate | |
| 16 | Seat Stop | 002014 |
| 17 | 35 x 10 Cushion Foot Pad (Leveling Foot) | 022943 |
| 18 | ~ 5 4 Transportation Wheel | 000179 |
| 19 | Console Assembly | 002157 |
| 19~1 | Top Console Cover | 002130 |
| 19~2 | Bottom Console Cover | 006063 |
| 19~3 | Badge, Console | 002131 |
| 19~5 | Deflector Fan Grill | 000983 |
| 19~6 | Fan Grill Anchor | 000807 |
| 19~7 | Fan Motor | 000808 |
| 19~8 | Fan Power Switch | 000982 |
| 19~11 | Interface Daughter Board | X |
| 19~12 | Heart Rate Receiver | 002149 |
| 19~15 | Console PCB Board | X |
| 19~16 | Console Rubber Key | |
| 20 | 330 X 10 Drive Pulley | 000908 |
| 22 | 25 X 15M/M Foot Pad (Leveler) | 010124 |
| 23 | ~32 (1.8T)_End Cap, Seat Handlebar | 002015 |
| 24 | ~25.4 (2.0T)_End Cap, Front Handlebar | 002016 |
| 25 | ~38_Seat Wheel Assy. Wheel ONLY 002086 | 002017 |
| 26 | 300mm_Handpulse Jack | 002018 |
| 27 | Handpulse W/Cable Assembly (A.B) | 002080 |
| 27~1 | Handpulse Assembly Top | X |
| 27~2 | Handpulse Assembly Bottom | X |
| 27~3 | 750mm_Handpulse Wire A | 002081 |
| 27~4 | 950mm_Handpulse Wire B | 002082 |
| 28 | M22x1.0 / 25_End Cap, Crank Arm | 002019 |
| 29 | Front Side Case (L) | 002143 |
| 30 | Front Side Case (R) | 002163 |
| 31 | Console Mast Cover | 002138 |
| 32 | Front Stabilizer Cover | 002139 |
| 33 | Step Cover | 002140 |
| 34 | Round Disk Cover, Crank | 002141 |

| | | |
|-----|------------------------------------|--------|
| 35 | Rear Chain Cover (L) | 002147 |
| 36 | Rear Chain Cover (R) | 002148 |
| 37 | Rear Stabilizer Cover | 002142 |
| 39 | Beverage Holder (L) | 002146 |
| 40 | Release Lever | 002031 |
| 43 | Controller | 002099 |
| 44 | Computer Cable | 002132 |
| 46 | Sensor W/Cable | 002133 |
| 47 | 2P x 750mm_Wire Brake Coil Harness | 002037 |
| 48 | 1200mm_AC Wire Assembly | 002127 |
| 51L | Crank Arm (L) | 002040 |
| 51R | Crank Arm(R) | 002041 |
| 52 | 6004 Bearing, Crank Axle | 002042 |
| 53 | 6203 Bearing For Idler Wheel | 021987 |
| 54 | Belt - 1222J | 002094 |
| 55 | Induction Brake | 002104 |
| 56 | Magnet | 010041 |
| 59 | Seat Fore/Aft Release Cable | 002046 |
| 60 | Wire Tie Mount | 010083 |
| 61 | Seat Bottom Cushion | 002047 |
| 63 | Mesh Seat Back | 002048 |
| 64 | Foam, Front Handle Bar | 002049 |
| 65 | 3/8" x 2- 1/4" _Hex Head Screw | 000063 |
| 66 | 1/4" x 3/4" _Hex Head Screw | 030097 |
| 67 | 3/8" x4" _Hex Head Screw | 030049 |
| 68 | 5/16" x15 _Hex Head Screw | 022803 |
| 71 | 3/8"x1-3/4" _Hex Head Screw | 030046 |
| 72 | 1/4"x13x1T _Flat Washer | 000078 |
| 73 | 1/4"x19x1.5T _Flat Washer | 022919 |
| 75 | ~17x 23.5 x 1T _Flat Washer | 022975 |
| 76 | 5/16" x 19 x 1.5T _Flat Washer | 030045 |
| 77 | 3/8" x 19 x 1.5T _Flat Washer | 000076 |
| 78 | ~5x16x1.5T _Flat Washer | |
| 79 | ~8x~18x3T _Curled Lock Washer | 030043 |
| 80 | ~1/4" _Spilit Washer | 030042 |
| 82 | ~8x1.5T _Spilit Washer | 030041 |
| 83 | 5/16" x20x 1.5T _Curved Washer | 030017 |
| 84 | 3/8" x 25 x 1.5T _Flat Washer | 030040 |
| 85 | ~17 _C Clip | 000196 |
| 86 | ~20 _C Clip | 002050 |
| 87 | J Bolt - M8 x 160m/m | 002083 |
| 88 | M8 x 7T _Nyloc Nut | 022288 |
| 89 | 3/8"x 7T _Nyloc Nut | 000080 |
| 90 | 1/4" x 5T _Nyloc Nut | 030098 |
| 91 | 5/16" x 6T _Nyloc Nut | 030039 |
| 93 | M6 x40mm _Socket Head Cap Screw | 030024 |
| 95 | M5x15 _Flat Head Socket Screw | 030022 |
| 96 | ~3.5x16 _Tapping Screw | 022979 |
| 97 | ~3x20 _Tapping Screw | 000839 |

| | | |
|-----|---|---------|
| 98 | M6x15_Phillips Head Screw | 030038 |
| 99 | M5x12_Phillips Head Screw | 030037 |
| 101 | 5x16_Tapping Screw - Plated | 010150 |
| 102 | 5x19_Tapping Screw | 030057 |
| 103 | ~3.5x12_Self Tapping Screw | 010113 |
| 104 | ~ 13.5x28.5_Seat Release Spring | 0002051 |
| 105 | ~4x16_Self Tapping Screw | 000050 |
| 106 | 5/16" x1- 3/4"_Button Head Socket Screw | 000086 |
| 107 | ~3.5x20_Self Tapping Screw | 030021 |
| 108 | M10x1.0_Nut, Crank Arm | 002052 |
| 109 | 3/8" x 7T_Nut | 010108 |
| 110 | 3/8" x 2"_Thumb Head Socket Screw | 022885 |
| 111 | M5x10.~14x2T_Flat Phillips Head Screw | 030034 |
| 112 | 12/14mm Wrench | 030036 |
| 114 | Phillips Head Screw Driver | 023091 |
| 115 | M5 Allen Wrench | 000089 |
| 116 | Pedal (L) | 002105 |
| 117 | Pedal (R) | 002106 |
| 120 | Pedal Strap (L) | 002057 |
| 121 | Pedal Strap (R) | 002058 |
| 122 | Drink Bottle | 030059 |
| 123 | Chest Strap | 022675 |
| 124 | ~3.5x32 m/m_Self Tapping Screw | 000914 |
| 125 | Plastic Seat Carriage Cover | 002152 |
| 126 | HGP Wire Grommet | 002060 |
| 127 | 5/16"x16x1T_Flat Washer | |
| 129 | M6_Nyloc Nut | 002126 |
| 131 | AC Transformer - Adapter | 002107 |
| 132 | 14/15mm Wrench | 030023 |
| 133 | 2050mm_Handpulse Wire Harness | 002134 |
| 134 | M3x10_Phillips Head Screw | 030019 |
| 140 | Sensor Bracket | 002113 |
| 141 | Front Handle Bar Cover | 002114 |
| 142 | 3/8"x4-1/4"_Hex Head Screw | |
| 143 | | |
| 144 | ~8x20x1T_White Washer | |
| 145 | ~13x19x1T_Flat Washer | |
| | Hardware Kit | 002129 |
| | Decal (Side) | 002181 |
| | Decal (Console) | 008020 |
| | Console Overlay | 006198 |
| | Button Overlay | 006199 |

16

XBR55 Part List

| Part No. | Description | Part # |
|----------|---|---------------------|
| 1 | Main Frame | |
| 2 | Console Mast | 002136 |
| 3 | Handle Bar Front | 002185 |
| 4 | Seat Carriage | Assy #002208 002187 |
| 5 | Seat Back Frame | 002186 |
| 6 | Handle Bar Seat | 002192 |
| 7 | Rear Stabilizer Bar | 002005 |
| 8 | Drive Pulley Axle | 002006 |
| 9 | Seat Wheel Adjustment Plate | Assy# 002017 002007 |
| 10 | Idler Wheel Assembly | |
| 11 | Seat Stop Axle | 002009 |
| 12 | Seat Position Latch | 002010 |
| 13 | Backing Plate | |
| 14 | Aluminum Seat Track | 002128 |
| 15 | Seat Position Index Plate | 002013 |
| 16 | Seat Stop | 002014 |
| 17 | Leveling Foot | 022943 |
| 18 | ~54 Transportation Wheel | 000179 |
| 19 | Console Assembly | 002164 |
| 19~1 | Top Console Cover | 002130 |
| 19~2 | Bottom Console Cover | 006063 |
| 19~3 | SPIRIT LOGO/P020029 | 002131 |
| 19~5 | Deflector Fan Grill | 000983 |
| 19~6 | Fan Grill Anchor | 000807 |
| 19~7 | Fan Motor | 000808 |
| 19~8 | Fan Power Switch | 000982 |
| 19~11 | Interface Daughter Board | X |
| 19~12 | Heart Rate Receiver | 002149 |
| 19~15 | Console PCB Board | |
| 19~16 | Console Rubber Key | |
| 20 | Drive Pulley | 000908 |
| 22 | Foot Pad | 010124 |
| 24 | ~ 25.4 (2.0T)_Button Head End Cap | 002016 |
| 25 | Seat Wheel, Aluminum Axle (Seat Wheel only) | 002086 |
| 26 | 300mm_Handpulse Wire, Coiled | 002018 |
| 27 | Handpulse W/Cable Assembly | |
| 27~1 | Handpulse Assembly Top | 001017 |
| 27~2 | Handpulse Assembly Bottom | 001018 |
| 27~3 | 750mm_Handpulse Wire A | 002081 |
| 27~4 | 950mm_Handpulse Wire B | 002082 |
| 28 | Crank Arm End Cap | 002019 |
| 29 | Front Side Case (L) | 002143 |
| 30 | Front Side Case (R) | 002163 |
| 31 | Console Mast Cover | 002138 |
| 32 | Front Stabilizer Cover | 002139 |
| 33 | Step Cover | 002140 |

| Part No. | Description | Part # |
|-----------------|--|---------------|
| 34 | Round Disk Cover, Crank | 002141 |
| 35 | Rear Chain Cover (L) | 002147 |
| 36 | Rear Chain Cover (R) | 002148 |
| 37 | Rear Stabilizer Cover | 002142 |
| 38 | Beverage Holder (L) | 002145 |
| 39 | Beverage Holder (R) | 002146 |
| 40 | Release Lever | 002031 |
| 43 | Controller | 002099 |
| 44 | Computer Cable (Upper) | 002132 |
| 46 | Sensor W/Cable | 002133 |
| 47 | 750mm_Brake Coil Harness | 002150 |
| 48 | 1200mm_AC Wire Assembly | 002127 |
| 51L | Crank (L) | 002040 |
| 51R | Crank (R) | 002041 |
| 52 | Bearing, Pulley Axle | 002042 |
| 53 | Bearing For Idler Wheel | 021987 |
| 54 | Belt | 002094 |
| 55 | Induction Brake | 002104 |
| 56 | Magnet | 010041 |
| 57 | Gas Cylinder | 002151 |
| 58 | Seat Recline Release Cable (84.5cm x 76cm) | 002045 |
| 59 | Seat Fore/Aft Release Cable (81 x 68) | 002046 |
| 60 | Wire Tie Mount | 010083 |
| 61 | Seat Bottom Cushion | 002047 |
| 63 | Mesh Seat Back | 002048 |
| 64 | Foam, Front Handle Bar | 002049 |
| 65 | 3/8" x 2- 1/4" _Hex Head Screw | 000063 |
| 66 | 1/4" x 3/4" _Hex Head Screw | 030097 |
| 67 | 3/8" x4" _Hex Head Screw | 030049 |
| 68 | 5/16" x15 _Hex Head Screw | 022803 |
| 69 | 5/16" x2- 1/2" _Hex Head Screw | 030048 |
| 70 | 5/16" x1- 3/4" _Hex Head Screw | 030047 |
| 71 | 3/8"×1-3/4" _Hex Head Screw | 030046 |
| 72 | 1/4"x13x1T _Flat Washer | 000078 |
| 73 | 1/4"x19x1.5T _Flat Washer | 022919 |
| 75 | ~ 17x 23.5 x 1T _Flat Washer | 022975 |
| 76 | 5/16" x 19 x 1.5T _Flat Washer | 030045 |
| 77 | 3/8" x 19 x 1.5T _Flat Washer | 000076 |
| 78 | ~ 5x16x1.5T _Flat Washer | |
| 79 | ~ 8x~ 18x3T _Curled Lock Washer | 030043 |
| 80 | ~ 1/4" _Spilit Washer | 030042 |
| 82 | ~ 8x1.5T _Spilit Washer | 030041 |
| 83 | 5/16" x20x 1.5T _Curved Washer | 030017 |
| 84 | 3/8" x 25 x 1.5T _Flat Washer | 030040 |
| 85 | ~ 17 _C Clip | 000196 |
| 86 | ~ 20 _C Clip | 002050 |
| 87 | J Bolt | |
| 88 | M8 x 7T _Nyloc Nut | 022288 |

| Part No. | Description | Part # |
|-----------------|--|---------------|
| 89 | 3/8"x 7T_Nyloc Nut | 000080 |
| 90 | 1/4" x 5T_Nyloc Nut | 030098 |
| 91 | 5/16" x 6T_Nyloc Nut | 030039 |
| 93 | M6 x40mm_Socket Head Cap Screw | 030024 |
| 95 | M5x15_Flat Head Socket Screw | 030022 |
| 96 | ~ 3.5x16_Tapping Screw | 022979 |
| 97 | ~ 3x20_Tapping Screw | 000839 |
| 98 | M6x15_Phillips Head Screw | 030038 |
| 99 | M5x12_Phillips Head Screw | 030037 |
| 101 | 5x16_Tapping Screw | 010110 |
| 102 | 5x19_Tapping Screw | 030057 |
| 103 | ~ 3.5x12 _Self Tapping Screw | 010113 |
| 104 | Seat Release Spring (13.5 x 28.5) | 002051 |
| 105 | ~ 4x16 _Self Tapping Screw | 000050 |
| 106 | 5/16" x1- 3/4" _Button Head Socket Screw | 000086 |
| 107 | ~ 3.5x20_Self Tapping Screw | 030021 |
| 108 | M10x1.0_Nut | 002052 |
| 109 | 3/8" x 7T_Nut | 010108 |
| 110 | 3/8" x 2" _Thumb Head Socket Screw | 022885 |
| 111 | M5x10.~ 14x2T_Flat Head Phillips Screw | 030034 |
| 112 | 12/14mm Wrench | 030036 |
| 113 | 13/15mm Wrench | 030035 |
| 114 | Phillips Head Screw Driver | 023091 |
| 115 | L Allen Wrench | |
| 116 | Pedal (L) | 002053 |
| 117 | Pedal (R) | 002054 |
| 118 | Pedal Foam (L) | 002055 |
| 119 | Pedal Foam (R) | 002056 |
| 120 | Pedal Strap (L) | 002057 |
| 121 | Pedal Strap (R) | 002058 |
| 122 | Drink Bottle | 030059 |
| 123 | Chest Strap | 022675 |
| 124 | ~ 3.5x32 m/m _Self Tapping Screw | 000914 |
| 125 | Plastic Seat Carriage Cover | |
| 126 | HGP Wire Grommet | |
| 127 | 5/16"×16×1T_Flat Washer | |
| 129 | M6_Nyloc Nut | 002126 |
| 130 | 13/14mm Wrench | |
| 131 | AC Transformer | 002107 |
| 133 | 2050mm_Handpulse Wire Harness | 002134 |
| 134 | M3×10_Phillips Head Screw | 030019 |
| 140 | Sensor Rack | 022989 |
| 141 | Front Handle Bar Cover | 002114 |
| 143 | Seat Position Index Plate, Fixing Plate | |
| 144 | Handlebar Rubber End Cap | 002162 |
| 145 | XBR Handle Switches | 002161 |
| 146 | "Up" Label | 002204 |

| Part No. | Description | Part # |
|-----------------|---------------------------------------|---------------|
| 147 | “Down” Label | 002205 |
| 148 | Adjustment Switch Cable (Upper) | 002153 |
| 149 | Adjustment Switch with earphone cable | |
| 150 | Adjustment Switch Connecting Cable | 002154 |
| 151 | Adjustment Switch Cable (Lower) | 002155 |
| 152 | ~ 8×20×1T_White Washer | |
| 153 | ~ 13×19×1T_Flat Washer | |
| | Hardware Kit | 002184 |
| | Console Overlay | 006198 |
| | Button Overlay | 006199 |