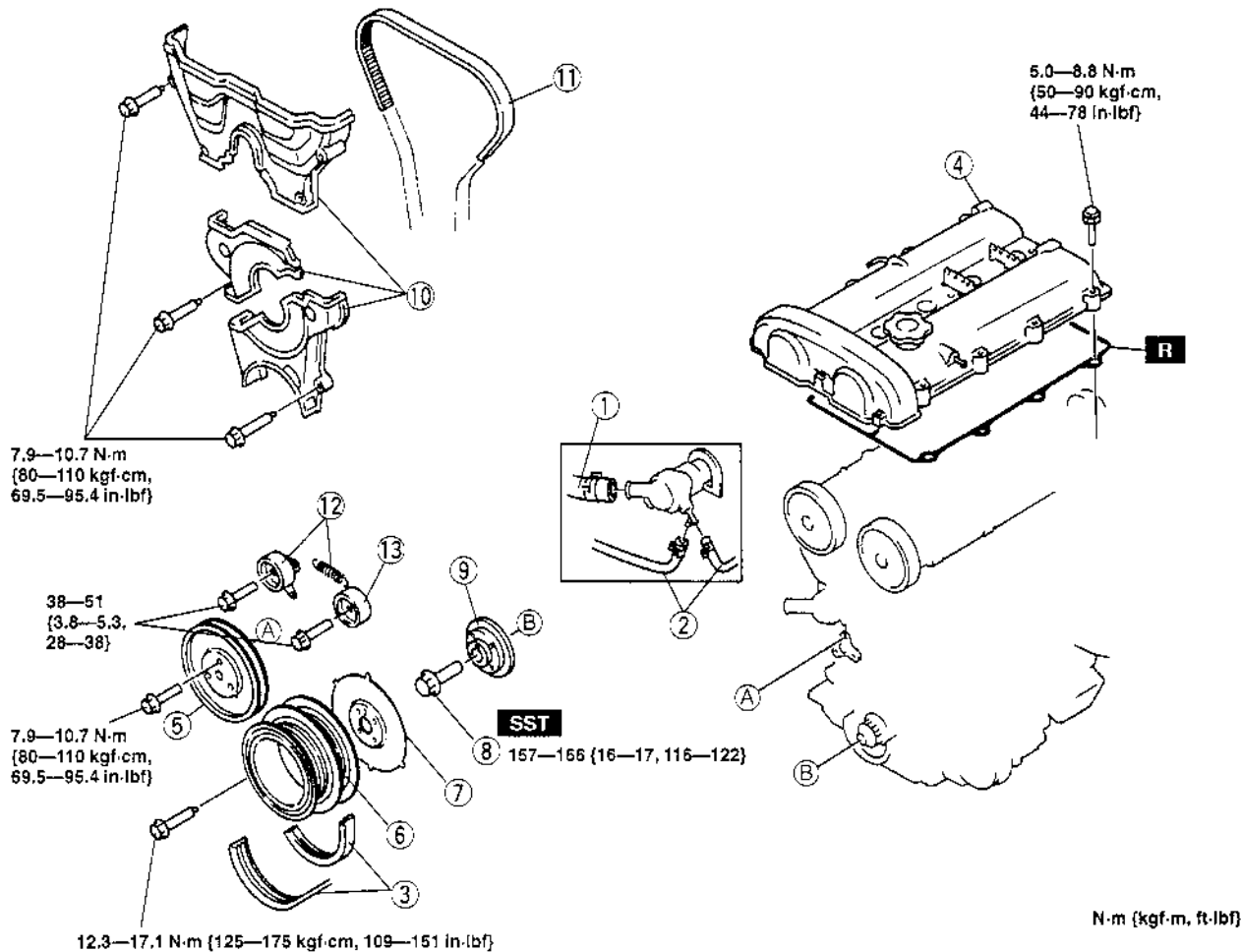


TIMING BELT REMOVAL/INSTALLATION

X5U110W06

1. Disconnect the negative battery cable.
2. Drain the engine coolant. (Refer to 01-12 ENGINE COOLANT REPLACEMENT.)
3. Remove the air hose.
4. Remove the camshaft position sensor and crankshaft position sensor.
5. Remove the high-tension lead and ignition coil. (Refer to 01-18 IGNITION COIL REMOVAL/INSTALLATION.)
6. Remove the spark plug. (Refer to 01-18 SPARK PLUG REMOVAL/INSTALLATION.)
7. Remove in the order indicated in the table.
8. Install in the reverse order of removal.
9. Verify the air gap. (Refer to 01-40 CRANKSHAFT POSITION SENSOR INSPECTION.)
10. Start the engine and
 - (1) Inspect for the pulleys and drive belt for runout and contact.
 - (2) Verify the ignition timing. (Refer to 01-10 ENGINE TUNE-UP, Ignition Timing Inspection.)



1	Upper radiator hose
2	Water hose
3	Drive belt ➤ 01-10 DRIVE BELT ADJUSTMENT
4	Cylinder head cover ➤ Installation Note
5	Water pump pulley
6	Crankshaft pulley
7	Plate

8	Pulley lock bolt ➤ Removal/Installation Note
9	Pulley boss
10	Timing belt cover
11	Timing belt ➤ Removal Note ➤ Installation Note
12	Tensioner and tensioner spring ➤ Installation Note
13	Idler