



SERVICE MANUAL

XT 8

XT 9

XT 10

Table of Contents

Troubleshooting Guide

Electronic System.....	3
Mechanical System.....	4

Repair Procedures

Procedure 1 (Calibrating the unit).....	5
Procedure 2 (Checking wire harness).....	6
Procedure 3 (Speed sensor adjustment).....	6
Procedure 4 (Checking treadmill circuit breaker).....	6
Procedure 5 (Checking roller for magnet).....	6
Procedure 6 (Adjust torque boost).....	6
Procedure 7 (Replacing controller).....	7
Procedure 8 (Replacing wire harness).....	7
Procedure 9 (Replacing drive motor).....	7
Procedure 10 (Replacing incline motor).....	7
Procedure 11 (Controller diagram).....	8
Procedure 12 (XT 10 Engineering mode).....	9

Warranty

Contacting Customer Service.....	10
Treadmill Warranty.....	10
Warranty Policy.....	11
Parts Order Form.....	12
Warranty Labor Credit Form.....	13

XT 8

Exploded View.....	14
Parts List.....	15-17

XT 9

Exploded View.....	18
Parts List.....	19-21

XT 10

Exploded View.....	22
Parts List.....	23-25

Troubleshooting Guide

ELECTRONIC SYSTEM

No power

There is no power to the console.

1. Unit must be plugged into an outlet with power
2. Power switch must be illuminated
3. Tether cord must be in place
4. Check treadmill circuit breaker. **(procedure 4)**
5. Check "POWER" LED on controller. **(procedure 11)**
6. Make sure wires on board are plugged in securely.
7. Check wire harness for continuity. **(procedure 2)**
8. If LED's on controller are **not** lit, test fuse on controller. If fuse is good, replace controller. **(procedure 7)**
9. If LED's are on, replace console.

LS error

Belt movement for a few seconds then LS error

1. Run the calibration procedure. **(procedure 1)**
2. Adjust speed sensor. **(procedure 3)**
3. Check roller for magnet **(Procedure 5)**
4. Check wire harness for continuity. **(procedure 2)**
5. If roller has a magnet and sensor adjustment does not fix, replace speed sensor.

LS error

No belt movement at all then LS error

1. Run the calibration procedure. **(procedure 1)**
2. Check wire harness for continuity. **(procedure 2)**
3. Look at LED labeled "PWM". **(procedure 11)**
 - If it lights up when the START button is pressed, replace the controller.
 - If it does not light when the START button is pressed, replace the console.

Incline does not work

1. Run the calibration procedure. **(procedure 1)**
2. Check wire harness for continuity. **(procedure 2)**
3. If there is an ERR message in the incline window, make sure that all the wires from the incline motor are connected to the controller correctly **(procedure 12)**. If they are connected correctly, and the calibration does not fix, replace the incline motor. **(procedure 10)**
4. When the UP and DOWN buttons are pressed, there should be a "beep" and a number change in the incline window. If there isn't, replace the console.
5. Observe the UP and DOWN diagnostic lights on the controller **(procedure 11)**. When the UP or DOWN buttons are pressed, you should (1) see one of the lights come on and (2) hear a relay click.
 - If there is no relay click and no diagnostic lights, replace console and controller **(procedure 7)**.
 - If there is a relay click and a diagnostic light and motor wires are connected correctly, replace incline motor.

Belt surging

Belt speeds up and slows down frequently

1. Adjust torque boost **(procedure 6)**
2. Adjust speed sensor **(procedure 3)**
3. Replace controller **(procedure 7)**

Troubleshooting Guide

MECHANICAL SYSTEM

Belt noise

1. Check belt to see if it needs to be tracked.
 2. Take off motor hood to make sure noise is from belt.
 3. Check belt and deck for damage.
 4. Clean deck and re-lube.
-

Drive motor noise

1. Check wires around motor for rubbing.
 2. Remove, clean, and re-insert the motor brushes
 3. Replace motor. (**procedure 9**)
-

Deck noise

Squeaking or creaking while walking

1. Tighten deck bolts
2. Clean and re-lube deck

Repair Procedures

PROCEDURE 1: Calibrating the unit

XT8 Calibration

1. Remove tether cord. Press and hold the START and FAST buttons and put tether cord back on. Display will go into test mode. “SET” will blink in middle of screen.
 2. Use “STOP” button to change from Km (Metric) to M (English).
 3. Wheel size will be shown in the SPEED window. Use FAST or SLOW buttons to change. (2.50) Press START.
 4. Minimum speed will be shown in the SPEED window. Use FAST or SLOW buttons to change. (0.5) Press START.
 5. Max speed will be shown in the SPEED window. Use FAST or SLOW buttons to change. (10.0) Max elevation will be shown in the INCLINE window. Use UP or DOWN buttons to change. (14)
 6. Press START. Unit will now auto-calibrate speed then incline. Unit will reset when it completes calibration.
-

XT9 Calibration

1. Remove tether cord. Press and hold the START and FAST buttons and put tether cord back on. Display will go into test mode. Press ENTER.
 2. “UNITS” English or Metric will scroll along the bottom of the display. Use UP or DOWN buttons to change. Press ENTER.
 3. “ADJUST WHEEL SIZE” will scroll along the bottom of the display and a number will flash in the calorie window. Use UP or DOWN buttons to change. (2.30) Press ENTER.
 4. “ADJUST MIN SPEED” will scroll along the bottom of the display and a number will flash in the calorie window. Use UP or DOWN buttons to change. (0.5) Press ENTER.
 5. “ADJUST MAX SPEED” will scroll along the bottom of the display and a number will flash in the calorie window. Use UP or DOWN buttons to change. (10.0) Press ENTER.
 6. “ADJUST MAX ELEVATION” will scroll along the bottom of the display and a number will be in the calorie window. Use UP or DOWN buttons to change. (14) Press ENTER.
 7. “GRADE RETURN” will scroll along the bottom of the display and “ON” or “OFF” will be in the calorie window. Use UP or DOWN to change. (ON)
 8. Press START. Unit will now auto-calibrate speed then incline. Unit will reset when it completes calibration.
-

XT10 Calibration

1. Remove tether cord. Press and hold the START and FAST buttons and put the tether cord back on. Display will go into a test mode then FACTORY SETTING will scroll across the screen. Press ENTER.
2. “POWER ON” will scroll across the screen. Use UP or DOWN buttons to change. (ON) Press ENTER.
3. “UNITS ENGLISH” will scroll across the screen. Use UP or DOWN buttons to change from English to Metric. Press ENTER.
4. “ADJUST WHEEL SIZE” will scroll across the screen. A number will be in the time window. Use UP or DOWN buttons to change. (2.50) Press ENTER.
5. “ADJUST MIN SPEED” will scroll across the screen. A number will be in the time window. Use UP or DOWN buttons to change. (0.5) Press ENTER.
6. “ADJUST MAX SPEED” will scroll across the screen. A number will be in the time window. Use UP or DOWN buttons to change. (12.0) Press ENTER.
7. “ADJUST MAX ELEVATION” will scroll across the screen. A number will be in the time window. Use UP or DOWN buttons to change. (15)
8. Press START. Unit will now auto-calibrate speed then incline. Unit will reset when it completes calibration.

PROCEDURE 2: Checking wire harness for continuity

- 2.1 Set your multimeter to read ohms.
- 2.2 Place the test leads at opposite ends of the wire, make sure both leads are on the same wire and are in contact with metal.
- 2.3 If the reading is close to 0 ohms, the wire has continuity (unbroken).
- 2.4 If the reading is very high or there is no reading at all, there is no continuity.
- 2.5 If there is no continuity, the harness needs to be replaced.

PROCEDURE 3: Speed sensor adjustment

- 3.1 Take off the motor hood.
- 3.2 The speed sensor is located on the frame, near where the drive belt goes around the front roller.
- 3.3 The sensor should be adjusted to about 1/16th of an inch from the front roller.



PROCEDURE 4: Checking treadmill circuit breaker

- 4:1 The circuit breaker is a small, red button between the power cord and the power switch.
- 4.2 Press the button in to reset.

PROCEDURE 5: Check roller for magnet

- 5.1 The front roller should have a round magnet and a round counter weight.
- 5.2 Take a screw or something metallic and test each one.
- 5.3 Only one should be magnetic.

PROCEDURE 6: Adjust Torque Boost

- 6.1 Using a small screw driver, turn the dial counter clockwise until it stops.
- 6.2 Press the START button on the console.
- 6.3 With someone standing on the walking belt, turn clockwise until the belt begins to move.
- 6.4 Increase the speed and check for smooth belt movement.

(See PROCEDURE 11 for location of Torque Boost)

PROCEDURE 7: Replacing controller

- 7.1 Disconnect power cord from unit.
- 7.2 Remove motor hood.
- 7.3 Remove two Phillips screws holding in the controller.
- 7.4 Disconnect all wires connected to the controller.
- 7.5 Insert new controller, secure with Phillips screws.
- 7.6 Reconnect wires to controller. (*See Procedure 12*)

PROCEDURE 8: Replacing wire harness

- 8.1 Turn power switch off.
- 8.2 Unplug harness from console and controller.
- 8.3 Tie the end of the new harness to the old harness (with a zip-tie or spare wire).
- 8.4 As you pull the old harness out of the upright, you will pull the new harness in.
- 8.5 Connect to board and console, & turn power back on.

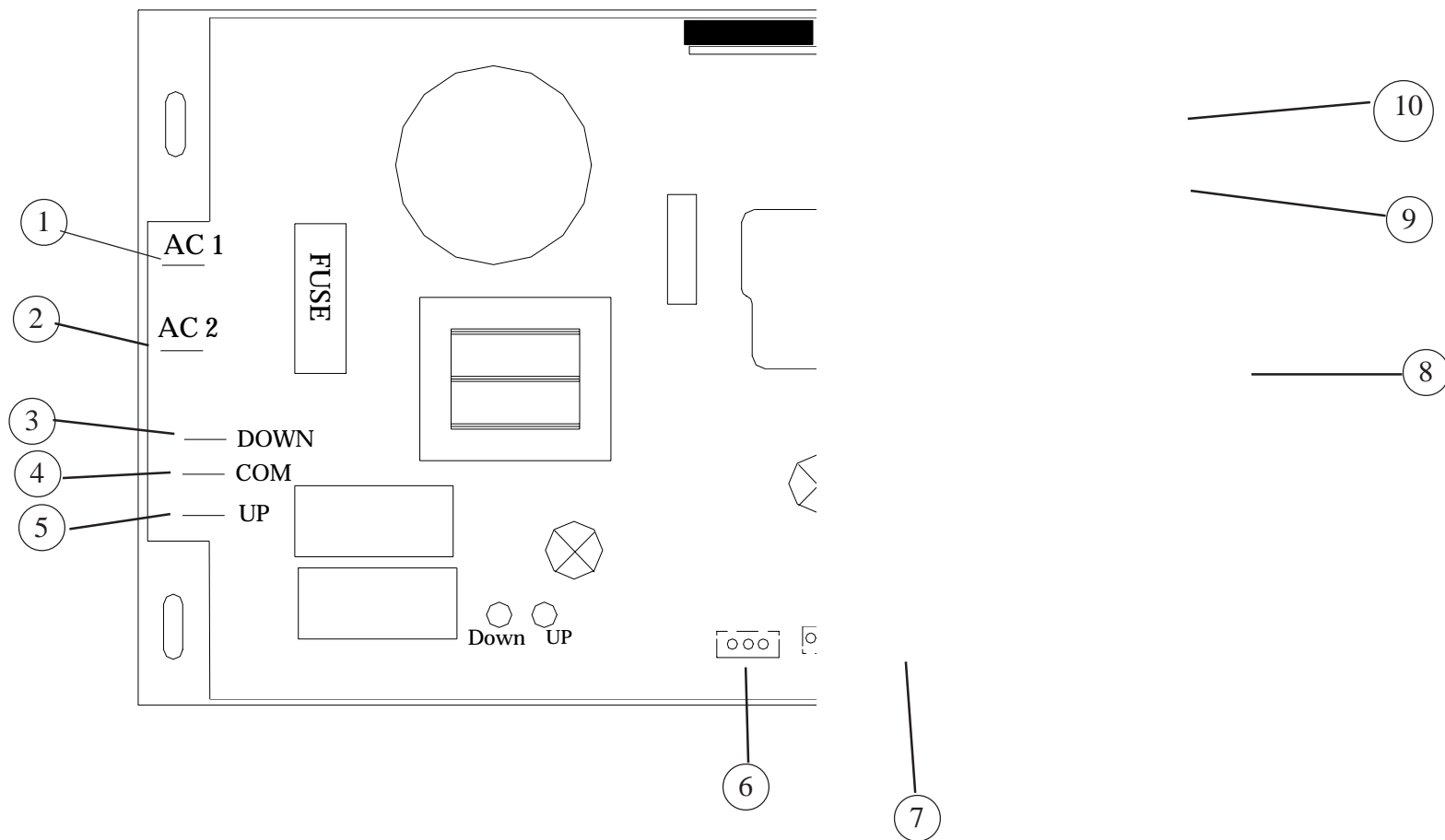
PROCEDURE 9: Replacing drive motor

- 9.1 Turn power switch off.
- 9.2 Disconnect red and black motor wires from controller.
- 9.3 Loosen tension bolt and remove four motor bolts.
- 9.4 Take off drive belt.
- 9.5 Insert new motor into place.
- 9.6 Put drive belt on.
- 9.7 Put in four motor bolts. Do not tighten them all the way down.
- 9.8 Tighten the tension bolt until you only have about an inch of play in the drive belt.
- 9.9 Tighten down the four motor bolts.
- 9.10 Plug the motor wires into the controller.

PROCEDURE 10: Replacing incline motor

- 10.1 Turn power switch off.
- 10.2 If possible, fold up unit.
- 10.3 Turn treadmill onto its side.
- 10.4 Disconnect motor wires from controller.
- 10.5 Remove bolt from incline tube.
- 10.6 Remove bolt from top of incline motor and take out motor.
- 10.7 Insert new motor and put in bolt on the top.
- 10.8 Reconnect motor wires to controller.
- 10.9 Turn on unit. The new motor should turn until it is at "zero".
- 10.10 Insert bolt into incline tube.

PROCEDURE 11: Controller diagram



1. Black wire from power switch
2. White wire from power switch
3. Black wire from incline motor
4. White wire from incline motor
5. Red wire from incline motor
6. Incline potentiometer
7. Wire harness connection
8. Torque boost adjustment
9. White motor wire
10. Red motor wire

PROCEDURE 12: XT 10 Engineering mode

1. Remove the tether cord.
2. Press and hold the START, ENTER, and STOP buttons and replaced the tether cord.
3. The display will say ENGINEERING MODE. Press ENTER.
4. Press the UP and DOWN buttons to scroll through the following sub menus:
 - Calibration
 - Factory Settings
 - Security
 - Functions
 - Display Test
 - Key Test
5. Press ENTER to access the desired program.

-Calibration

Speed Calibration – In this mode, you can test the speed.

Incline Calibration – In this mode, you can test the incline.

-Factory Settings

This mode will allow you to view the Wheel size, Max inc, Max and Min speed.

Use the UP and DOWN buttons to scroll through. (They cannot be changed here)

-Security

Child Lock On/Off

Press ENTER to turn on or off. To unlock display, press START and ENTER.

-Functions

Sleep Mode On/Off. Press ENTER to turn on or off.

Units English/Metric. Press ENTER to change.

Maintenance

Lube Message Reset. Press ENTER to reset.

Odometer Reset. Press ENTER to reset.

Pause Mode On/Off. Press ENTER to turn on or off.

-Display Test

Test all LED's

-Key Test

Test all buttons on console.

CONTACTING CUSTOMER SERVICE

It is the responsibility of the Dealer to assemble and setup any Spirit product they have sold, as well as diagnose problems and perform service, regardless of the product's location. Recognizing the importance of insuring the consumer's satisfaction, Spirit technical support will always be available to assist the Dealer in diagnosing a problem. All warranties are valid from the original date of purchase by the original purchaser.

PARTS ORDERS

Fax 870-930-9013

Fax your order using a completed parts purchase order to (870) 930-9013. Please do not call to place your parts orders, fax only. Service technicians are available to assist in the repair of treadmills. If taking parts orders by telephone, technical service calls will go unanswered.

Standard shipping is UPS ground. If you need an order shipped by another method, you must pay for shipping.

CUSTOMER SERVICE

Call 800-258-4555

Calling from Store Location

Dial 1 to reach the first available technician, or select the extension number for one technician. ***You must have the serial number of the machine.***

Eddie Greene, Customer Service Supervisor ext. 630

Jerry Savage, Customer Support ext. 632

Travis Lawrence, Customer Support ext. 633

Kevin Thomas, Customer Support ext. 628

If the technician you choose is unavailable, leave a detailed message. Leave only one message. Do not call another extension. Do not leave multiple messages. This results in a duplication of effort and keeps our technicians from assisting you and other customers in a prompt manner.

Calling from Customer Location

Dial 0 for an operator. Relay to the operator you are a dealer and in a customer's home. You will be assisted by the first available technician.

TREADMILL WARRANTY

Spirit Manufacturing Inc. warrants all its treadmills' parts for a period of 5 years from the date of retail sale, as determined by sale receipt, or eighteen (18) months from the original factory shipping date, whichever comes first. Spirit's responsibilities include providing new or remanufactured parts, at Spirit's option, and technical support to our independent dealers and servicing organizations. In the absence of a dealer or service organization, these warranties will be administered by Spirit directly to a consumer. An extended warranty period applies to the following components:

XT 8

Frame - Lifetime

Motor - 20 years

All parts - 3 years

Labor - 1 year

XT 9 & XT 10

Frame - Lifetime

Motor - 30 years

All parts - 3 years

Labor - 1 year

WARRANTY POLICY

Parts Returns

It is very important that you have not only the model number but also the serial number on hand when placing a parts order. If a serial number is provided at the time a warranty parts order is placed the required parts will be sent to you at no charge. If the unit is no longer covered under warranty the parts will be billed to you on 30 day payment terms.

If a warranty replacement part is required to be returned to Spirit it will be noted on the packing list included in your shipment. Also noted on the packing list will be the amount you will be invoiced if the parts are not returned within 30 days.

Parts Required to be Returned for Credit

Upper and Lower Electronics - All STS / SC / SL / Inspire / Z / XT Series

Paperwork Requirement: A copy of your invoice or packing list and diagnostic form (if included with replacement part) must be returned with the defective part to receive warranty consideration.

Warranty Labor Reimbursement Procedure

Complete Request for Warranty Labor Credit Form.

Fax completed form to Terry Jordan at (870) 930-9013.

Once Spirit has received your returned parts, your request will be processed and returned by fax to you.

What is Not Covered

- 1) Failures created due to improper installation or maintenance.
- 2) Repairs requiring only simple adjustments, fuses, or calibrations.
- 3) Damages sustained from shipping - Freight claim must be filed with your carrier.
- 4) Repairs that are made beyond the warranty period.
- 5) Repairs where the customer is paying the base labor fee to the dealer.
- 6) Units that are dealer stock or floor models.
- 7) Trips for diagnostic visit.
- 8) Residential units in a commercial setting.

Credit will not be issued for repairs in which:

- 1) Parts required for return are not returned to Spirit within 30 days.
- 2) All paperwork is not completed or returned.
- 3) Spirit confirms that work was not completed.

Warranty Labor Reimbursement Policy

Spirit has established a set of guidelines that are fair to both independent service companies and to Spirit. Our policy on labor warranty reimbursement is simple...we pay a one time flat completion fee of \$80 per service occurrence. Once all work required to complete the repair has been finished and all parts required for return have been returned to Spirit either credit or payment in the amount of \$80 will be issued to your company. The one-time flat completion fee of \$80 will be paid only when the repair is complete and the unit has been returned to proper working condition. If your company needs consideration for labor or trip fees that are higher than Spirit's standard fees, they will be evaluated on a case-by-case basis. (e.g. - travel to perform service work in Manhattan). Any change in the fee schedule must be approved in writing by Spirit before any work is performed.

For Dealers That Wish To Use Third Party Service

It is Spirit's policy that all dealers service products that they sell to end users. If your company chooses to use an independent company for service, you are responsible for all service work. Our labor reimbursement policies apply in every case and any charges in excess of Spirit's one time flat completion fee will be billed back to the selling dealer. In certain circumstances, we will work directly with an independent service company, but we will not pay for any service that deviates from our policy for dealers wishing to have this arrangement. Dealers will be responsible to the service company for all charges disallowed by Spirit. Any deviation from Spirit policy must be approved in advance in writing.

REQUEST FOR WARRANTY LABOR CREDIT



P.O. BOX 2037 ■ JONESBORO, ARKANSAS 72402

Labor Warranty Spirit is responsible
 Customer is responsible

Date of Repair	Model#	Serial Number	
Service Company	Svc CoAcct Number	Owner's Name	
		Owner's Address	
Selling Dealer Number	Selling Dlr Acct	Phone Number With Area Code	Date Sold

Problem

Repair Done

				FACTORY USE ONLY			
QUANTITY	PART NUMBER	PART DESCRIPTION	WTY	TEST RESULTS	UNIT PRICE	WORK ORDER	INVOICE

FACTORY USE ONLY	
LABOR	FREIGHT:
TRIP	SHIPPING:
TOTAL LABOR	WARRANTY CREDIT WILL BE ISSUED TO DEALER ACCOUNT.

ALL PARTS MUST BE RETURNED TO FACTORY UNLESS INSTRUCTED OTHERWISE.

CLAIMS MUST BE RETURNED TO SPIRIT CORP. WITHIN 7 DAYS OF REPAIR.

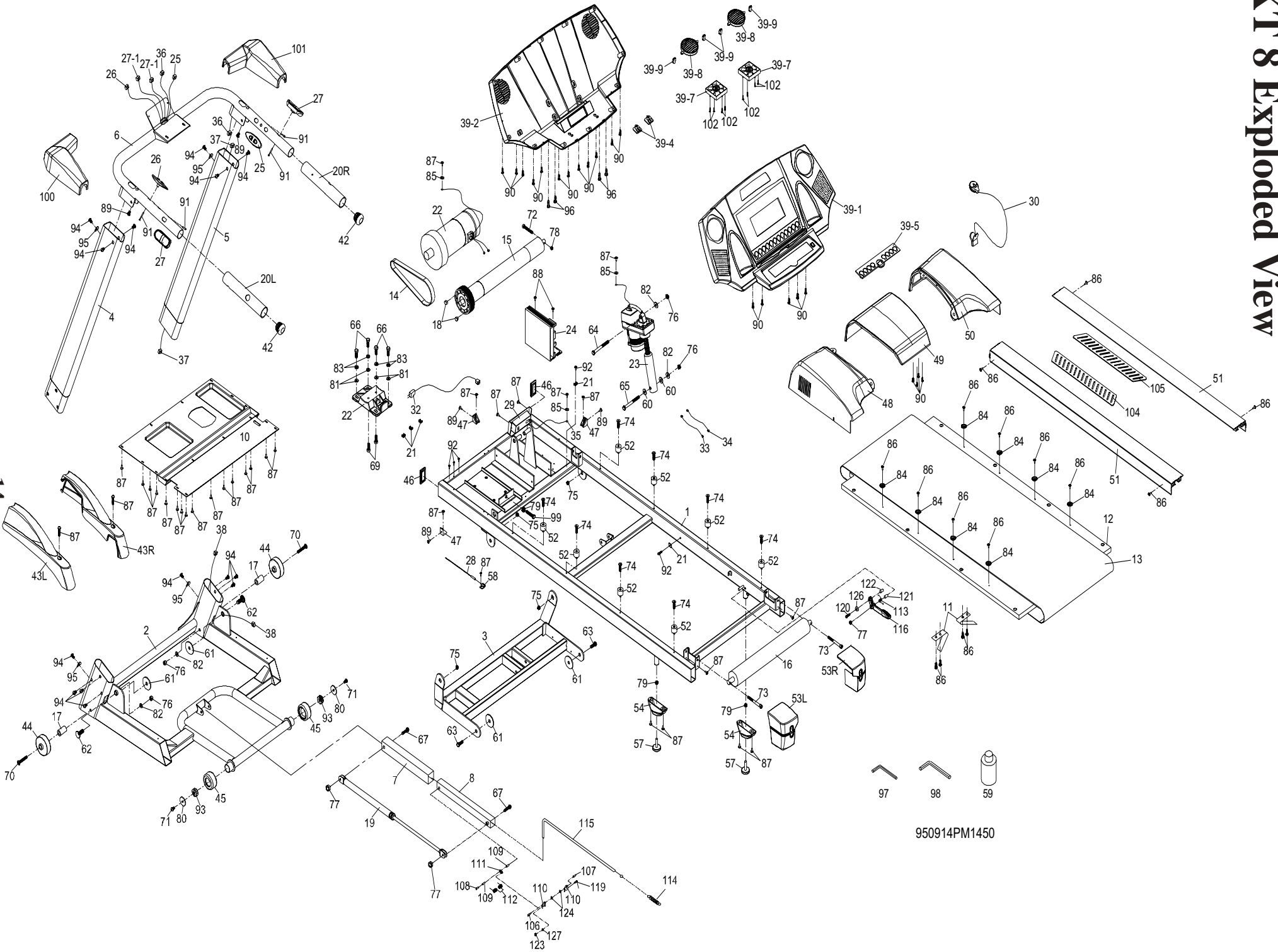
SHADED AREAS FACTORY USE ONLY

Authorization No. _____

WARRANTY ADMINISTRATOR

FAX TO SPIRIT (870) 930-9013

XT 8 Exploded View



950914PM1450

XT8 Part List

NO.	DESCRIPTION	PART #	QTY.
1	MAIN FRAME		1
2	FRAME BASE		1
3	INCLINE BRACKET		1
4	LEFT HANDRAIL	000377	1
5	RIGHT HANDRAIL	000378	1
6	CONSOLE SUPPORT	000409	1
7	OUTER SLIDE (same as XT200/600)		1
8	INNER SLIDE (same as XT200/600)		1
10	BOTTOM MOTOR COVER	000410	1
11	BELT GUIDE	000413	2
12	RUNNING DECK	000411	1
13	RUNNING BELT	000412	1
14	DRIVE BELT (610J)	022553	1
15	FRONT ROLLER W/ PULLEY	000414	1
16	REAR ROLLER	000415	1
17	~ 10 x ~ 14 x 35.5L_ FRONT WHEEL SLEEVE	000311	2
18	MAGNET	000507	2
19	CYLINDER (450N)	023097	1
20L	HANDGRIP FOAM(L)	000433	1
20R	HANDGRIP FOAM(R)	000434	1
21	WIRE TIE MOUNT	010083	5
22	MOTOR-2.5HP YC (not the same as U-F80)	000416	1
23	INCLINE MOTOR	022762	1
24	CONTROLLER	000405	1
25	SPEED ADJUSTMENT SWITCH W/CABLE	000424	1
26	INCLINE ADJUSTMENT SWITCH W/CABLE	000425	1
27	HANDPULSE ASSY.	000370	2
27~1	900 m/m_HANDPULSE CABLE	000417	2
28	SENSOR W/CABLE	022561	1
29	ELECTRONIC MODULE	000418	1
30	SAFETY KEY	022497	1
32	POWER CORD	022812	1
33	150m/m x 764 x 764_CONNECTING CABLE(WHITE)		1
34	150m/m x 764 x 764_CONNECTING CABLE(BLACK)		1
35	GROUND WIRE		1
36	700m/m_COMPUTER CABLE (UPPER)	000520	1
37	1100m/m_COMPUTER CABLE (MIDDLE)	000406	1
38	900m/m_COMPUTER CABLE (LOWER)	022823	1
39	CONSOLE	000404	1
39~1	TOP CONSOLE COVER	000419	1
39~2	BOTTOM CONSOLE COVER	000385	1
39~4	CONSOLE ANCHOR	000427	2
39~5	INNER CONSOLE COVER	000428	1
39~7	FAN MOTOR	000808	2
39~8	FAN GRILL	000420	2
39~9	FAN ANCHOR	000807	4

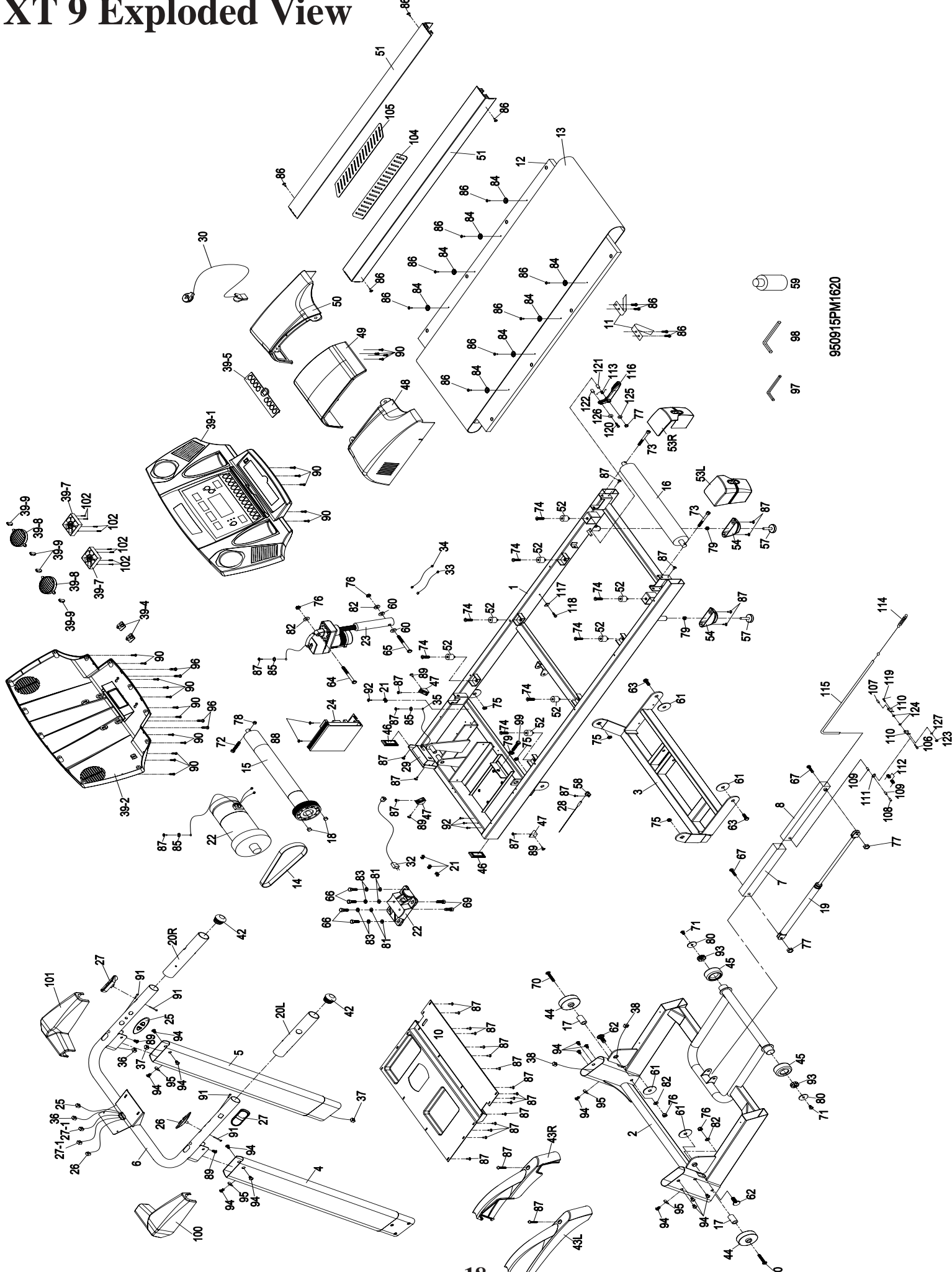
XT8 Part List continued....

NO.	DESCRIPTION	PART #	QTY.
42	~ 38_BUTTON HEAD END CAP	022024	2
43R	FRAME BASE CAP (R)	000389	1
43L	FRAME BASE CAP (L)	000388	1
44	FRONT WHEEL	022479	2
45	REAR WHEEL	000127	2
46	%30x60_SQUARE END CAP	022480	2
47	MOTOR COVER ANCHOR	22484	3
48	LEFT MOTOR COVER	000390	1
49	MIDDLE MOTOR COVER	000421	1
50	RIGHT MOTOR COVER	000392	1
51	FOOT RAIL	000422	2
52	M6xØ25x22_CUSHION	000423	8
53L	REAR ADJUSTMENT BASE (L)	000394	1
53R	REAR ADJUSTMENT BASE (R)	000395	1
54	FOOT PAD CAP	000396	2
57	Ø30x3/8"_FOOT PAD	022713	2
58	SENSOR RACK	022989	1
59	LUBRICANT	022271	1
60	~ 10 x 24 x 3T_NYLON WASHER (A)		2
61	~ 50 x 13 x 3T_NYLON WASHER (B)		4
62	1/2" x 1-1/4"_CARRIAGE BOLT		2
63	1/2" x 1"_HEX HEAD SCREW		2
64	3/8" x 4"_SOCKET HEAD CAP SCREW		1
65	3/8" x92m/m_HEX HEAD SCREW		1
66	3/8" x 1"_HEX HEAD SCREW	000061	4
67	5/16"×2-3/4"(JSYr)_BUTTON HEAD SOCKET SCREW		2
69	M8 x 12m/m_HEX HEAD SCREW	000058	2
70	3/8" x 2"_FLAT HEAD SOCKET SCREW	022885	2
71	5/16" x 1"__BUTTON HEAD SOCKET SCREW		2
72	M8 x 60m/m_HEX HEAD SCREW		1
73	M8 x 80m/m_SOCKET HEAD CAP SCREW		2
74	M6 x 25m/m_FLAT HEAD COUNTERSINK SCREW		8
75	1/2" x 8T_NYLON NUT	023102	4
76	3/8" x 7T_NYLON NUT	000080	4
77	5/16" x 6T_NYLON NUT		3
78	M8 x 8T_NYLON NUT		1
79	3/8" x 7T_NUT	010108	3
80	~ 35 x 5/16" x 1.5T_FLAT WASHER	010099	2
81	~ 25 x 10 x 1.5T_FLAT WASHER		4
82	~ 19 x 10 x 1.5T_FLAT WASHER		4
83	~ 10_SPRING WASHER		4
84	~ 6.5 x 25 x 1T_CONCAVE WASHER	023010	8
85	M5_RAISED WASHER		3
86	4x12m/m_SELF TAPPING SCREW	000070	18
87	5x16m/m_TAPPING SCREW (Black)	010110	28
88	5x19m/m_TAPPING SCREW	030057	2

XT8 Part List continued....

NO.	DESCRIPTION	PART #	QTY.
89	5x16m/m_TAPPING SCREW (Black)	010110	5
90	3.5x12m/m_SELF TAPPING SCREW	010113	21
91	4x38m/m_SELF TAPPING SCREW	000325	4
92	3.5x16m/m_TAPPING SCREW	022979	5
93	5/16"_NUT		2
94	5/16" x 15m/m_BUTTON HEAD SOCKET SCREW		14
95	~ 5/16" x 19 x 1.5T _CURVED WASHER	000087	4
96	M5 x 15m/m_PHILLIPS HEAD SCREW	000913	4
97	COMB. M5 ALLEN WRENCH & PHILLIPS HEAD SCREW DRIVER	000089	1
98	M6(66X86)_ALLEN WRENCH	022973	1
99	3/8"×2"_HEX HEAD SCREW		1
100	HANDGRIP FOAM(L)		1
101	HANDGRIP FOAM(R)		1
102	3.5×32m/m_SELF TAPPING SCREW	000914	8
104	NON-SLIP RUBBER(L)	000313	1
105	NON-SLIP RUBBER(R)	000314	1
106	~ 5×~ 8×25L_ CLEVIS PIN	030101	1
107	~ 5×~ 8×9L_ FASTENING BUSHING		1
108	~ 8×30L_LINK SHAFT		1
109	~ 8×~ 12.7×12L_ SHAFT BUSHING		2
110	2T_ FASTENING BRACKET		2
111	2T_LINK		1
112	~ 1.0_ DUAL ROTA-SPRING		1
113	CHENCHING ROTA-SPRING	000082	1
114	STEEL ROPE ROTA-SPRING		1
115	STEEL ROPE		1
116	CLENCHING HANDLE ASSY-LOCKING CABLE ASSY.	000429	1
119	M3×10m/m_PHILLIPS HEAD SCREW		1
120	M5×15m/m_PHILLIPS HEAD SCREW	000913	1
121	5/16"×2"_PHILLIPS HEAD SCREW		1
122	M5_ NYLON NUT		1
123	M3_NUT		1
124	~ 5×~ 10×1.0T_ FLAT WASHER	023086	1
126	~ 5×~ 12×1.0T_ FLAT WASHER		1
127	M3_SPRING WASHER		1
	OVERLAY (LCD)	000399	1
	OVERLAY (8 Button)	000400	1
	DECAL (Side)	000435	2
	DECAL (Console)	000402	1
	HARDWARE KIT	000430	1

XT 9 Exploded View



950915FPM1620

XT9 Part List

No.	DESCRIPTION	PART #	Q'ty
1	MAIN FRAME		1
2	FRAME BASE		1
3	INCLINE BRACKET		1
4	LEFT HANDRAIL	000377	1
5	RIGHT HANDRAIL	000378	1
6	CONSOLE SUPPORT	000379	1
7	OUTER SLIDE		1
8	INNER SLIDE		1
10	BOTTOM MOTOR COVER	000380	1
11	BELT GUIDE	000413	2
12	RUNNING DECK	000381	1
13	RUNNING BELT	000382	1
14	DRIVE BELT - 610J	022553	1
15	FRONT ROLLER W/ PULLEY	000436	1
16	REAR ROLLER	000437	1
17	~ 10 x ~ 14 x 35.5L_ FRONT WHEEL SLEEVE	000311	2
18	MAGNET	000507	2
19	CYLINDER - 570N	023098	1
20L	HANDGRIP FOAM(L)	000433	1
20R	HANDGRIP FOAM(R)	000434	1
21	WIRE TIE MOUNT	010083	6
22	MOTOR-2.5HP YC (not the same as U-F80)	000416	1
23	INCLINE MOTOR	022762	1
24	CONTROLLER	000405	1
25	SPEED ADJUSTMENT SWITCH W/CABLE	000424	1
26	INCLINE ADJUSTMENT SWITCH W/CABLE	000425	1
27	HANDPULSE ASSY.	000370	2
27~1	900 m/m_ HANDPULSE CABLE	000417	2
28	SENSOR W/CABLE	022561	1
29	ELECTRONIC MODULE	000418	1
30	SAFETY KEY	022497	1
32	POWER CORD	022812	1
33	150m/m x 764 x 764_ CONNECTING CABLE(WHITE)		1
34	150m/m x 764 x 764_ CONNECTING CABLE(BLACK)		1
36	800m/m_ COMPUTER CABLE (UPPER)	022720	1
37	1100m/m_ COMPUTER CABLE (MIDDLE)	000406	1
38	1000m/m_ COMPUTER CABLE (LOWER)	000407	1
39	CONSOLE	000383	1
39~1	TOP CONSOLE COVER	000384	1
39~2	BOTTOM CONSOLE COVER	000385	1
39~4	CONSOLE ANCHOR	000386	2
39~5	INNER CONSOLE COVER	000387	1
39~7	FAN MOTOR	000808	2
39~8	FAN GRILL	000420	2
39~9	FAN ANCHOR	000807	4
42	~ 38_ BUTTON HEAD END CAP	022024	2

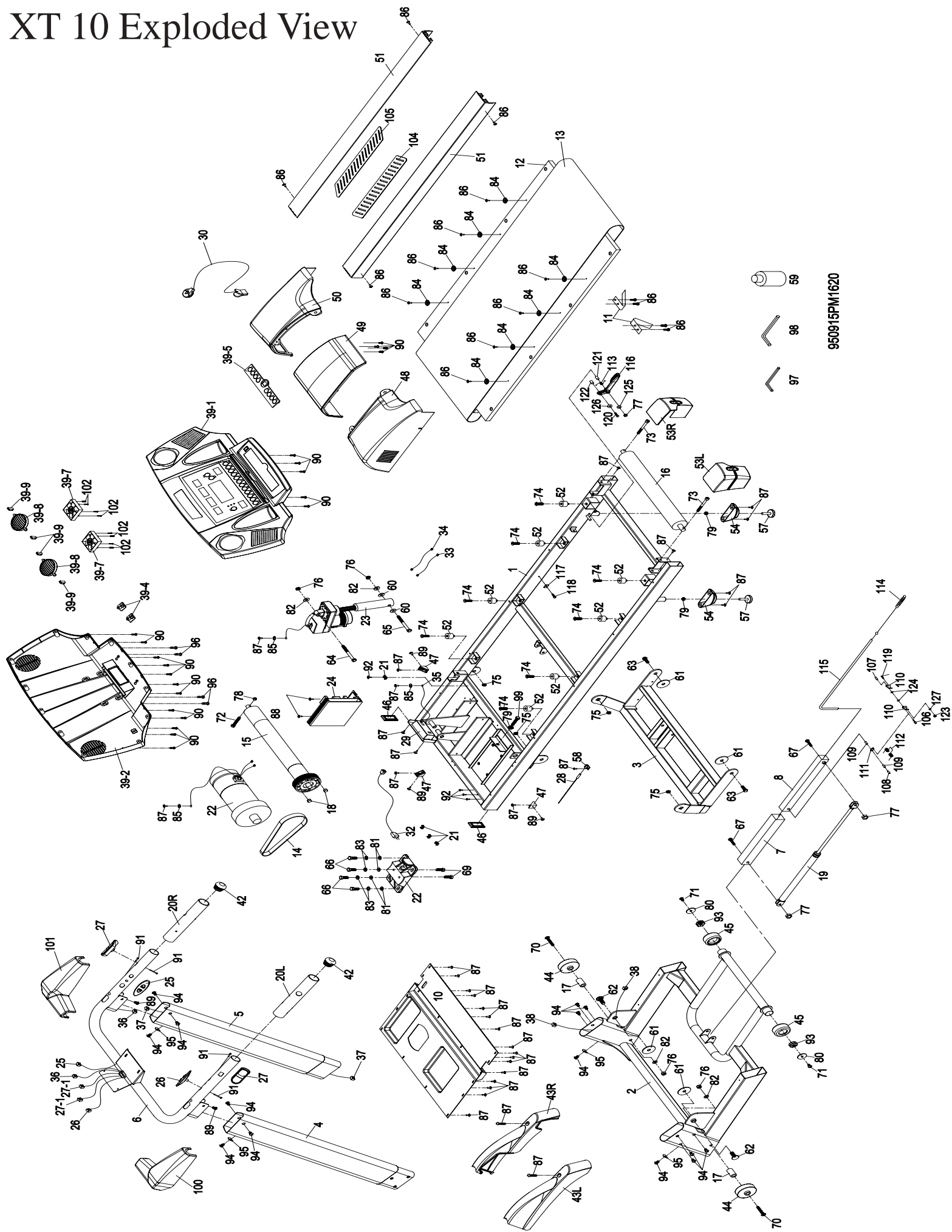
XT9 Part List continued....

No.	DESCRIPTION	PART #	Q'ty
43R	FRAME BASE CAP (R)	000389	1
43L	FRAME BASE CAP (L)	000388	1
44	FRONT WHEEL	022479	2
45	REAR WHEEL	000127	2
46	%30x60_SQUARE END CAP	022480	2
47	MOTOR COVER ANCHOR	022484	3
48	LEFT MOTOR COVER	000390	1
49	MIDDLE MOTOR COVER	000391	1
50	RIGHT MOTOR COVER	000392	1
51	FOOT RAIL	000393	2
52	M8xØ30x35_CUSHION	022482	6
53L	REAR ADJUSTMENT BASE (L)	000394	1
53R	REAR ADJUSTMENT BASE (R)	000395	1
54	FOOT PAD CAP	000396	2
57	Ø30x3/8"_FOOT PAD	022713	2
58	SENSOR RACK	022989	1
59	LUBRICANT	022271	1
60	~ 10 x 24 x 3T _NYLON WASHER (A)		2
61	~ 50 x 13 x 3T _NYLON WASHER (B)		4
62	1/2" x 1-1/4"_CARRIAGE BOLT		2
63	1/2" x 1" _HEX HEAD SCREW		2
64	3/8" x 4"(JSYr)_SOCKET HEAD CAP SCREW		1
65	3/8" x92m/m(JSYr)_HEX HEAD SCREW		1
66	3/8" x 1" _HEX HEAD SCREW	000061	4
67	5/16"×2-3/4"_BUTTON HEAD SOCKET SCREW		2
70	3/8" x 2" _FLAT HEAD SOCKET SCREW	022885	2
71	5/16" x 1" _BUTTON HEAD SOCKET SCREW		2
72	M8 x 60m/m _HEX HEAD SCREW		1
73	M8 x 80m/m _SOCKET HEAD CAP SCREW		2
74	M8 x 25m/m _FLAT HEAD COUNTERSINK SCREW	000101	8
75	1/2" x 8T_ NYLOC NUT	023102	4
76	3/8" x 7T_ NYLOC NUT	000080	4
77	5/16" x 6T_ NYLOC NUT		3
78	M8 x 8T_ NYLOC NUT		1
79	3/8" x 7T_ NUT	000080	3
80	~ 35 x 5/16" x 1.5T _ FLAT WASHER	010099	2
81	~ 25 x 10 x 1.5T _ FLAT WASHER		4
82	~ 19 x 10 x 1.5T _ FLAT WASHER		4
83	~ 10 _SPRING WASHER		4
84	~ 6.5 x 25 x 1T _CONCAVE WASHER	023010	8
85	M5_RAISED WASHER		3
86	4x12m/m_SELF TAPPING SCREW	000070	18
87	5x16m/m_TAPPING SCREW (BLACK)	010110	28
88	5x19m/m_TAPPING SCREW	030057	2
89	5x16m/m_TAPPING SCREW (BLACK)	010110	5
90	3.5x12m/m_SELF TAPPING SCREW	010113	21
91	4x38m/m_SELF TAPPING SCREW	000325	4

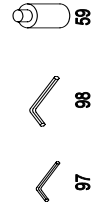
XT9 Part List continued....

No.	DESCRIPTION	PART #	Q'ty
92	3.5x16m/m_TAPPING SCREW	022979	6
93	~ 32 x 1.8T _NUT		2
94	5/16" x 15m/m _BUTTON HEAD SOCKET SCREW		14
95	~ 5/16" x 19 x 1.5T _CURVED WASHER	000087	4
96	M5 x 15m/m_PHILLIPS HEAD SCREW	000913	6
97	M5 ALLEN WRENCH / PHILLIPS HEAD SCREW DRIVER	000089	1
98	M6(66X86)_ALLEN WRENCH	022973	1
99	3/8"×2"_HEX HEAD SCREW		1
100	HANDGRIP FOAM(L)		1
101	HANDGRIP FOAM(R)		1
102	3.5×32m/m_SELF TAPPING SCREW	000914	8
104	NON-SLIP RUBBER(L)	000313	1
105	NON-SLIP RUBBER(R)	000314	1
106	~ 5×~ 8×25L_ CLEVIS PIN	030101	1
107	~ 5×~ 8×9L_ FASTENING BUSHING		1
108	~ 8×30L_LINK SHAFT		1
109	~ 8×~ 12.7×12L_ SHAFT BUSHING		2
110	2T_ FASTENING BRACKET		2
111	2T_LINK		1
112	~ 1.0_ DUAL ROTA-SPRING		1
113	CHENCHING ROTA-SPRING	000082	1
114	STEEL ROPE ROTA-SPRING		1
115	STEEL ROPE		1
116	CLENCHING HANDLE ASSY. w/ Cable	000563	1
119	M3×10m/m_PHILLIPS HEAD SCREW		1
120	M5×20m/m_PHILLIPS HEAD SCREW		1
121	5/16"×2"_PHILLIPS HEAD SCREW		1
122	M5_ NYLOC NUT		1
123	M3_NUT		1
124	~ 5×~ 10×1.0T_ FLAT WASHER	023086	2
126	~ 5×~ 12×1.0T_ FLAT WASHER		1
127	M3_SPRING WASHER		1
	HARDWARE KIT	000398	1
	OVERLAY (LCD)	000431	1
	OVERLAY (KEYPAD)	000400	1
	DECAL (SIDE)	000401	2
	DECAL (CONSOLE)	000402	1

XT 10 Exploded View



950915PM1620



XT10 Part List

No.	DESCRIPTION	PART #	Q'ty
1	MAIN FRAME		1
2	FRAME BASE		1
3	INCLINE BRACKET		1
4	LEFT HANDRAIL	000377	1
5	RIGHT HANDRAIL	000378	1
6	CONSOLE SUPPORT	000379	1
7	OUTER SLIDE		1
8	INNER SLIDE		1
10	BOTTOM MOTOR COVER	000380	1
11	BELT GUIDE	000413	2
12	RUNNING DECK	000381	1
13	RUNNING BELT	000382	1
14	DRIVE BELT - 610J	022553	1
15	FRONT ROLLER W/ PULLEY	000436	1
16	REAR ROLLER	000437	1
17	~ 10 x ~ 14 x 35.5L_ FRONT WHEEL SLEEVE	000311	2
18	MAGNET	000507	2
19	CYLINDER - 570N	023098	1
20L	HANDGRIP FOAM(L)	000433	1
20R	HANDGRIP FOAM(R)	000434	1
21	WIRE TIE MOUNT	010083	6
22	MOTOR, 2.75hp YC	000432	1
23	INCLINE MOTOR	022762	1
24	CONTROLLER	000405	1
25	SPEED ADJUSTMENT SWITCH W/CABLE	000424	1
26	INCLINE ADJUSTMENT SWITCH W/CABLE	000425	1
27	HANDPULSE ASSY.	000370	2
27~1	900 m/m_HANDPULSE CABLE	000417	2
28	SENSOR W/CABLE	022561	1
29	ELECTRONIC MODULE	000418	1
30	SAFETY KEY	022497	1
32	POWER CORD	022812	1
33	150m/m x 764 x 764_CONNECTING CABLE(WHITE)		1
34	150m/m x 764 x 764_CONNECTING CABLE(BLACK)		1
36	800m/m_COMPUTER CABLE (UPPER)	022720	1
37	1100m/m_COMPUTER CABLE (MIDDLE)	000406	1
38	1000m/m_COMPUTER CABLE (LOWER)	000407	1
39	CONSOLE	000397	1
39~1	TOP CONSOLE COVER	000384	1
39~2	BOTTOM CONSOLE COVER	000385	1
39~4	CONSOLE ANCHOR	000386	2
39~5	INNER CONSOLE COVER	000387	1
39~7	FAN MOTOR	000808	2
39~8	FAN GRILL	000420	2
39~9	FAN ANCHOR	000807	4
42	~ 38_BUTTON HEAD END CAP	022024	2
43R	FRAME BASE CAP (R)	000389	1

XT10 Part List continued....

No.	DESCRIPTION	PART #	Q'ty
43L	FRAME BASE CAP (L)	000388	1
44	FRONT WHEEL	022479	2
45	REAR WHEEL	000127	2
46	%30x60_SQUARE END CAP	022480	2
47	MOTOR COVER ANCHOR	022484	3
48	LEFT MOTOR COVER	000390	1
49	MIDDLE MOTOR COVER	000391	1
50	RIGHT MOTOR COVER	000392	1
51	FOOT RAIL	000393	2
52	M8xØ30x35_CUSHION	022482	6
53L	REAR ADJUSTMENT BASE (L)	000394	1
53R	REAR ADJUSTMENT BASE (R)	000395	1
54	FOOT PAD CAP	000396	2
57	Ø30x3/8"_FOOT PAD	022713	2
58	SENSOR RACK	022989	1
59	LUBRICANT	022271	1
60	~ 10 x 24 x 3T _NYLON WASHER (A)		2
61	~ 50 x 13 x 3T _NYLON WASHER (B)		4
62	1/2" x 1-1/4"_CARRIAGE BOLT		2
63	1/2" x 1"_HEX HEAD SCREW		2
64	3/8" x 4"(JSYr)_SOCKET HEAD CAP SCREW		1
65	3/8" x 92m/m(JSYr)_HEX HEAD SCREW		1
66	3/8" x 1" _HEX HEAD SCREW	000061	4
67	5/16"×2-3/4"(JSYr)_BUTTON HEAD SOCKET SCREW		2
70	3/8" x 2"_FLAT HEAD SOCKET SCREW	022885	2
71	5/16" x 1" _BUTTON HEAD SOCKET SCREW		2
72	M8 x 60m/m _HEX HEAD SCREW		1
73	M8 x 80m/m _SOCKET HEAD CAP SCREW		2
74	M8 x 25m/m _FLAT HEAD COUNTERSINK SCREW	000101	8
75	1/2" x 8T_ NYLOC NUT	023102	4
76	3/8" x 7T_ NYLOC NUT	000080	4
77	5/16" x 6T_ NYLOC NUT		3
78	M8 x 8T_ NYLOC NUT		1
79	3/8" x 7T_NUT		3
80	~ 35 x 5/16" x 1.5T _ FLAT WASHER	010099	2
81	~ 25 x 10 x 1.5T _ FLAT WASHER		4
82	~ 19 x 10 x 1.5T _ FLAT WASHER		4
83	~ 10 _SPRING WASHER		4
84	~ 6.5 x 25 x 1T _CONCAVE WASHER	023010	8
85	M5_RAISED WASHER		3
86	4x12m/m_SELF TAPPING SCREW	000070	18
87	5x16m/m_TAPPING SCREW (Black)	010110	28
88	5x19m/m_TAPPING SCREW	030057	2
89	5x16m/m_TAPPING SCREW (Black)	010110	5
90	3.5x12m/m_SELF TAPPING SCREW	010113	21
91	4x38m/m_SELF TAPPING SCREW	000325	4
92	3.5x16m/m_TAPPING SCREW	022979	6

XT10 Part List continued....

No.	DESCRIPTION	PART #	Q'ty
93	~ 32 x 1.8T _NUT		2
94	5/16" x 15m/m _BUTTON HEAD SOCKET SCREW		14
95	~ 5/16" x 19 x 1.5T _CURVED WASHER	000087	4
96	M5 x 15m/m _PHILLIPS HEAD SCREW	000913	6
97	M5 ALLEN WRENCH / PHILLIPS HEAD SCREW DRIVER	000089	1
98	M6(66X86)_ALLEN WRENCH	022973	1
99	3/8"×2" _HEX HEAD SCREW		1
100	HANDGRIP FOAM(L)		1
101	HANDGRIP FOAM(R)		1
102	3.5×32m/m _SELF TAPPING SCREW	000914	8
104	NON-SLIP RUBBER(L)	000313	1
105	NON-SLIP RUBBER(R)	000314	1
106	~ 5×~ 8×25L_ CLEVIS PIN	030101	1
107	~ 5×~ 8×9L_ FASTENING BUSHING		1
108	~ 8×30L_ LINK SHAFT		1
109	~ 8×~ 12.7×12L_ SHAFT BUSHING		2
110	2T_ FASTENING BRACKET		2
111	2T_ LINK		1
112	~ 1.0_ DUAL ROTA-SPRING		1
113	CHENCHING ROTA-SPRING	000082	1
114	STEEL ROPE ROTA-SPRING		1
115	STEEL ROPE		1
116	CLENCHING HANDLE ASSY. w/ Cable	000563	1
119	M3×10m/m _PHILLIPS HEAD SCREW		1
120	M5×20m/m _PHILLIPS HEAD SCREW		1
121	5/16"×2" _PHILLIPS HEAD SCREW		1
122	M5_ NYLOC NUT		1
123	M3_ NUT		1
124	~ 5×~ 10×1.0T_ FLAT WASHER	023086	2
126	~ 5×~ 12×1.0T_ FLAT WASHER		1
127	M3_ SPRING WASHER		1
	HARDWARE KIT	000398	1
	OVERLAY (LED)	000445	1
	OVERLAY (KEYPAD)	000400	1
	DECAL (SIDE)	000403	2
	DECAL (CONSOLE)	000402	1