

WARNINGS AND CAUTIONS

READ AND FOLLOW INSTRUCTIONS CAREFULLY. FOLLOW ALL WARNINGS AND CAUTIONS
IMPROPER USE OF OPURA MAY LEAD TO ACCIDENT AND/OR BODILY INJURY.



WARNINGS

- DO NOT OPEN, REPAIR OR TAMPER WITH OPURA. OPURA IS PACKAGED WITH A TAMPER-PROOF SEAL. WARRANTY IS NULL AND VOID IF THE SEAL HAS BEEN BROKEN.
- DO NOT TOUCH OPURA WITH WET HANDS.
- DO NOT ALLOW ANY ITEM TO REST OR PRESS AGAINST THE POWER CORD. DO NOT USE OPURA IF THE POWER CORD HAS BEEN FRAYED OR OTHERWISE DAMAGED.
- ENSURE THAT OPURA IS TURNED OFF AND UNPLUGGED FOR MAINTENANCE OR WHEN RELOCATING.
- USE OPURA IN A WELL VENTILATED AREA.



CAUTIONS

- KEEP AWAY FROM DIRECT SUNLIGHT.
- DO NOT PLACE NEAR HEAT.
- DO NOT BLOCK AIR INTAKE.
- WHEN MOUNTING OPURA ENSURE THAT IT IS INSTALLED ON SOLID WALL TO AVOID DAMAGE TO UNIT OR USER.

WARRANTY

OPURA is covered by a one year limited warranty.

WHAT IS COVERED BY LIMITED WARRANTY?

This limited warranty covers defects in materials and workmanship for your OPURA product.

WHAT IS NOT COVERED BY THIS LIMITED WARRANTY?

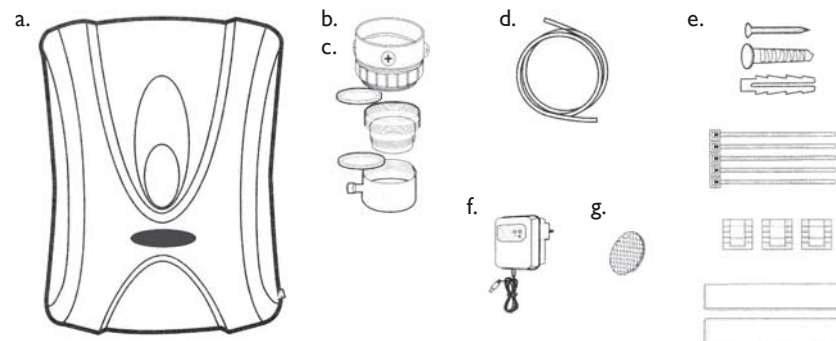
This limited warranty does not cover:

- Problems that result from:
 - External causes such as accident, abuse, misuse, or problems with electrical power
 - Servicing not authorized by O₃ INNOVATIONS INC.
 - Tampering with OPURA including any unit that does not bear a complete tamper-resistant seal
 - Usage that is not in accordance with product instructions
 - Failure to follow the product instructions or failure to perform preventive maintenance
 - Problems caused by using accessories, parts, or components not supplied by O₃ INNOVATIONS INC.
- Products with missing or altered serial numbers
- Products for which O₃ INNOVATIONS has not received payment

Additional conditions may apply. See www.opura.ca for details.



Model OP-1107 USER MANUAL



OPURA CONTENTS

- a. OPURA handwash and hard surface sanitizer
- b. Faucet aerator with adapter (1)
- c. Universal spout adapter (1)
- d. Silicone tubing
- e. Mounting package (1) consisting of:
 - Mounting nail, screw and anchor
 - Tie wraps (5)
 - Wire mounts (3)
 - Velcro mounting strips (2)
- f. AC adapter (1)
- g. Spare filters (2)
- h. User manual (1)

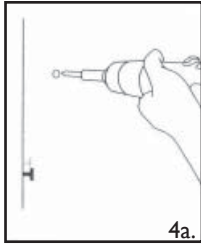
PRODUCT SPECIFICATIONS

Model:	OPURA OP-1107
Colour:	Silver
Operating temperature:	32-120 degrees Fahrenheit / 0-50 degrees Celsius
Input voltage:	DC 12V
Power consumption:	6W (max)
Dimensions:	6(L) x 4.5(W) x 2.8(D) in (152 x 115 x 73 mm)
Gross weight:	13.4 oz (380g)
Ozone output (gas):	40-150 mg/hr
Ozone concentration: (aqueous)	0.14-0.50 ppm
Protection:	10 minutes auto shutoff with reset

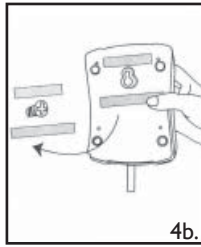


7548 Côte de Liesse, Montreal, Québec H4T 1E7
T: 514.336.9191 • 800.750.3870 • F: 514.745.2959

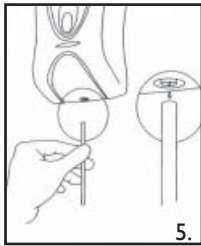
INSTALLATION AND SETUP



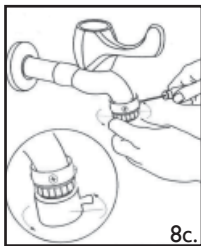
1. Inspect OPURA box against parts list to ensure that package contents are complete.
2. Select an adequate location to mount OPURA on wall above faucet on which OPURA will be installed. Location should be a clean, flat surface within 15 feet of an electrical outlet. OPURA should be mounted at least 6 inches (15 cm) above faucet spout to ensure adequate flow of ozone gas.
3. Remove mounting package (e) from OPURA box. Select mounting hardware to be used. For smooth surfaces such as tile Velcro mounting strips are recommended. Use enclosed screw or nail for mounting on walls.



4. a) **Mounting with nail/screws:**
Locate spot where nail/screw is to be installed. For nail installation use hammer and install nail into wall. Ensure that nail extends approximately 0.25 inches (0.6mm) to allow hanging of OPURA. For screw installation drill small hole in wall and insert plastic anchor. Ensure anchor is firmly placed in hole. Secure screw to wall leaving approximately 0.25 inches (0.6mm) to allow hanging of OPURA.



- b) **Mounting with Velcro:**
Mount Velcro strips on back of OPURA horizontally to ensure adequate contact with wall surface. Peel off protective backing on one side only to expose adhesive. Attach to back of OPURA as show in figure 4b. Once attached to back of OPURA peel off remaining backing and push to wall in selected location. Remove from wall and ensure that Velcro is securely attached to wall and unit surfaces.



5. Connect silicone tube to bottom of OPURA.
6. Hang OPURA on wall using nail/screw or Velcro strips previously installed.
7. Remove existing aerator from faucet.
8. a) **If spout end is threaded male:**
Install OPURA aerator on the faucet spout and ensure it is securely in place. Insert silicone tube to aerator.



- b) **If spout end is threaded female:**
Add enclosed adapter to OPURA aerator and ensure it is secured. Take OPURA aerator with adapter and install on faucet spout. Insert silicone tube to aerator.

- c) **If spout has no thread:**
Select the universal adapter and loosen all screws. Mount firmly to spout end and tighten all screws equally. Install aerator to universal adapter. Insert silicone tube to aerator.

9. Connect silicone tube to bottom of OPURA unit.
⚠ WARNING: ensure that the silicone tube is not compressed and is free of kinks when installed.
10. Plug AC adapter end into OPURA and power adapter end into wall outlet.

11. Press and hold POWER button. OPURA will respond with a beep and will light up indicating it is ready for use.

OPERATION

POWER ON / STANDBY MODE

Press power button and hold for one second until OPURA turns on. OPURA will beep and indicator will display red LED at bottom. Yellow LED indicator within indicator strip indicates level of ozone to be produced (factory set at medium - 0.3ppm).

POWER OFF

Press and hold power button until OPURA turns off. All lights will extinguish.

AQUEOUS OZONE CONCENTRATION SETUP

OPURA is factory set to produce ozone at a medium concentration of 100 mg/hr or 0.3ppm.

While OPURA is on press and release POWER button to toggle ozone concentration moving yellow LED within indicator strip. Pressing POWER button will cycle through various ozone concentration levels. Stop when desired ozone concentration level is obtained.

USE OF OPURA

OPURA is a fully automatic unit, sensing water flow and producing ozone on demand. During water flow red LED at bottom of indicator strip will turn green. Indicator strip will display water flow sensed from first yellow LED up to fifth. Green LED indicates ozone production.

INSUFFICIENT WATER FLOW

When water flow is insufficient for ozone production red LED will flash. Increase water flow to correct problem. If during normal water flow this occurs, remove aerator and clean properly removing any blockage. Reinstall and try unit again.

LOW WATER FLOW

Green LED indicator will be lit and yellow LED will light in first position only, indicating adequate but low water flow with ozone production.

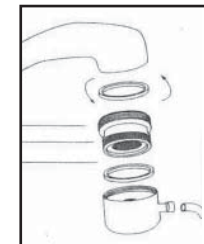
HIGH WATER FLOW

Green LED indicator will light in fifth position only, indicating the highest water flow with ozone production.

CARE & MAINTENANCE

OPURA is virtually maintenance free. However, the following steps should be performed on a regular basis:

1. Use a clean cloth to wipe surface of OPURA and remove any dust or debris.
2. On a monthly basis, clean OPURA aerator to prevent blockage. Inspect aerator for dirt or debris and run under clean water to remove contaminants.
3. On an annual basis, replace air filter on back of OPURA. This filter traps any large particles that may damage unit. A clean filter will ensure that OPURA performs as intended.



If aerator must be re-assembled use the following schematic for assembly.

Note: incorrect assembly of aerator components will result in lack of ozone production.

OPURA HAS BEEN FACTORY SET AT MEDIUM LEVEL 100 mg/hr OF OZONE PRODUCTION FOR 0.3ppm CONCENTRATION.