



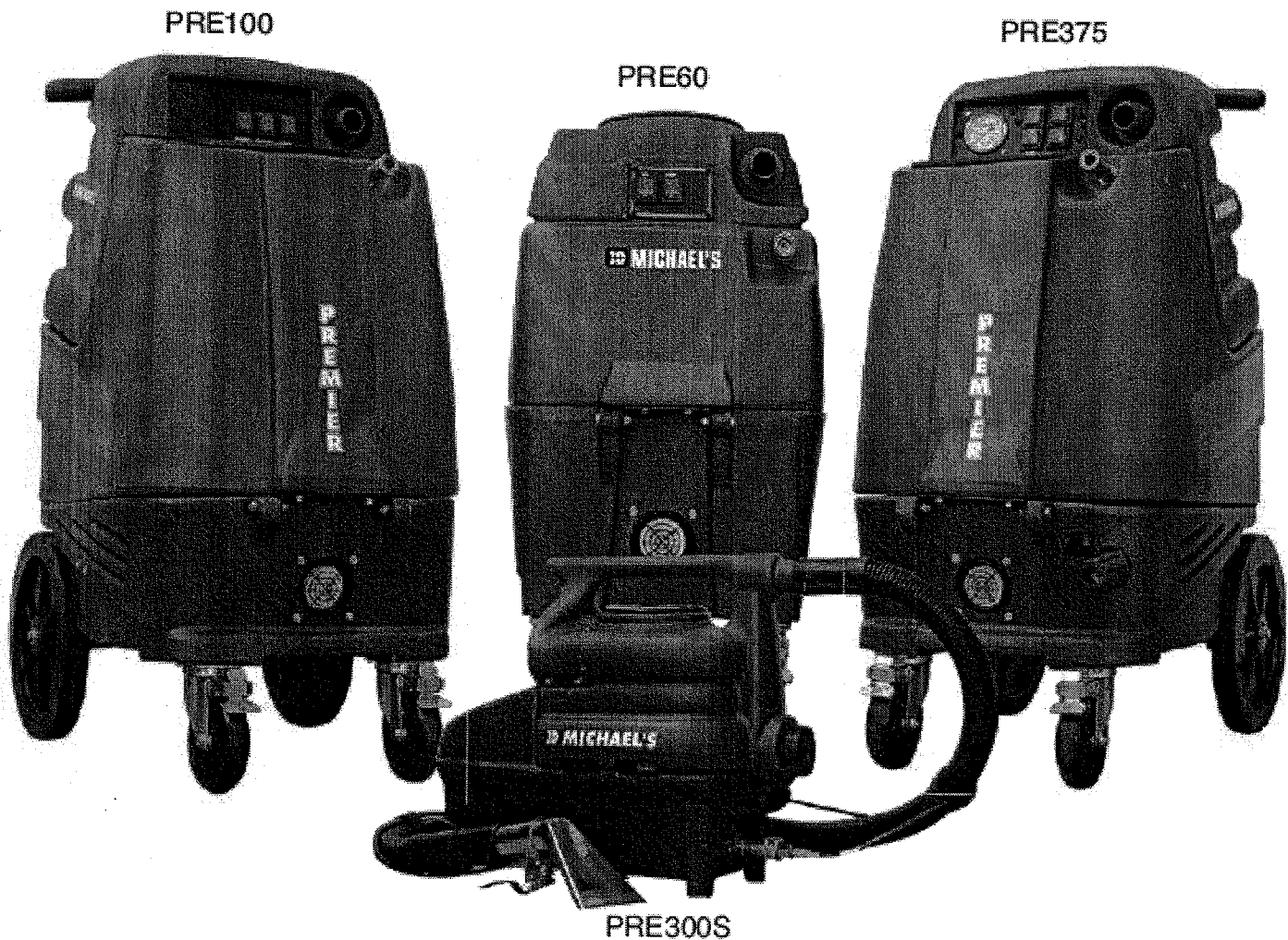
## **User Manual, Parts Lists:**

**Premier 300S Micro Spotter**

**Premier 60**

**Premier 100**

**Premier 375**



**Phone: 1-800-263-3731**

**[michaelsequipment.ca](http://michaelsequipment.ca)**

## PREMIER EXTRACTOR SPECIFICATIONS

| <b>MODEL</b>                  | <b>PR300S</b>   | <b>PR60</b>       | <b>PR100</b>      | <b>PR375</b>      |
|-------------------------------|-----------------|-------------------|-------------------|-------------------|
| <b>Vacuum Motors</b>          | Single 2-stage  | Single 3-stage    | Dual 2-stage      | Dual 2-stage      |
| <b>115 AC</b>                 | 1.25 HP         | 2 HP              | 1.25 HP           | 1.25 HP           |
| <b>CFM (Per Motor)</b>        | 97              | 100               | 95                | 95                |
| <b>Waterlift</b>              | 85"             | 137"              | 150"              | 150"              |
| <b>Pump/Amps</b>              | 55 PSI          | 120 PSI           | 120 PSI           | 500 PSI           |
| <b>Solution Tank Capacity</b> | 5L (1.3 US Gal) | 22L (5.8 US Gal)  | 42L (11 US Gal)   | 42L (11 US Gal)   |
| <b>Recovery Tank Capacity</b> | 4L (1 US Gal)   | 23L (6.0 US Gal)  | 45L (12 US Gal)   | 45L (12 US Gal)   |
| <b>Cord Set</b>               | 25'             | 25'               | 50'               | 50'               |
| <b>Casters</b>                | n/a             | 4 x 3" Locking    | 2 x 5" Locking    | 2 x 5" Locking    |
| <b>Wheels</b>                 | n/a             | n/a               | 2 x 12"           | 2 x 12"           |
| <b>Hose Assembly</b>          | 8'              | 25' High Pressure | 25' High Pressure | 25' High Pressure |
| <b>Drain Valve</b>            | No              | Yes               | Yes               | Yes               |
| <b>Tank Construction</b>      | Polyethylene    | Polyethylene      | Polyethylene      | Polyethylene      |
| <b>Weight (Net)</b>           | 20 lbs.         | 70 lbs.           | 95 lbs.           | 95 lbs.           |
| <b>Weight (Shipping)</b>      | 23 lbs          | 75 lbs.           | 105 lbs.          | 110 lbs.          |



12-2011

## **EXTRACTOR TROUBLESHOOTING**

### **SYMPTOM: Unit will not turn on.**

PROBLEM: Not plugged in.

SOLUTION: Plug machine in proper outlet.

PROBLEM: Circuit breaker has popped.

SOLUTION: Reset circuit breaker. Make sure no other items are running on the same circuit as machine.

PROBLEM: Wire from power cord has become disconnected from terminal block.

SOLUTION: Reattach wire to terminal block.

### **SYMPTOM: Pump is not running properly.**

PROBLEM: Quick disconnects are not completely locked together.

SOLUTION: Snap quick disconnects firmly together.

PROBLEM: Switch on switch plate is bad.

SOLUTION: Replace switch.

PROBLEM: Jets on wand are clogged.

SOLUTION: Clean jet with soft wire brush or remove jet and flush clean.

PROBLEM: Filters are clogged.

SOLUTION: Remove filters and rinse with clean water.

PROBLEM: The solution tank is empty.

SOLUTION: Fill the solution tank up with a premixed detergent.

PROBLEM: Pump wire has become disconnected.

SOLUTION: Reconnect wire.

PROBLEM: Brass check valve is stuck.

SOLUTION: Replace with new check valve.

## Troubleshooting (cont'd)

PROBLEM: Pump motor brushes are worn out.  
SOLUTION: Replace pump.

PROBLEM: Pump is pulsating.  
SOLUTION: Tighten all hoses. Check for leaks.

PROBLEM: Pressure switch on pump head is bad.  
SOLUTION: Replace with new pressure switch.

### **SYMPTOM: Vacuum motor not working properly.**

PROBLEM: Switch on switch plate is bad.  
SOLUTION: Replace switch.

PROBLEM: Hose not connected tightly to wand or machine.  
SOLUTION: Connect hose tightly.

PROBLEM: Wand is clogged with hair, carpet fibers and or debris.  
SOLUTION: Clean wand.

PROBLEM: Drain valve is not shut completely.  
SOLUTION: Close drain valve completely.

PROBLEM: Vacuum tank lid is not on tightly.  
SOLUTION: Secure the vacuum tank lid on tightly.

PROBLEM: Vacuum tank lid or the vacuum tank is cracked.  
SOLUTION: Replace the vacuum tank lid or the vacuum tank.

PROBLEM: Vacuum hose is cracked or split.  
SOLUTION: Replace vacuum hose.

PROBLEM: Vacuum motor armature is worn out.  
SOLUTION: Replace vacuum motor.

PROBLEM: Water is coming out of the vacuum motor.  
SOLUTION: Use a low foaming detergent.

# Premier Extraction Instructions

## (PR 60/100/375)

### **Operating instructions**

Thoroughly vacuum carpet. (Do not use extractor for dry vacuuming.)  
Flush antifreeze if present. (See Warning)  
Fill clean water tank with hot water.  
Add low foaming carpet extraction chemical. (Powders not recommended)  
Connect vacuum hose and solution lines to the tank and accessory.

### **PR 60/100**

Turn on pump. Let pump run for a few seconds to build up to its proper pressure, it will then automatically shut off. There is a demand style pump in the PR 60/100 which only runs when you are actually spraying solution.

If air should get in the pump lines, this may cause an air lock and the pump won't automatically shut off. If this occurs, simply spray some solution through the wand or hand tool to flush it out. Repeat if unit has run dry or is not used for an extended period of time.

### **PR 375**

Priming Instructions: Pump requires priming. Priming valve lever is located to the left of the pressure adjusting knob on the bottom right hand corner (older-style machines) or the upper right (new style machines) on the PRE375 only. Switch vacuum motors and pump on, push lever on primer valve to the right and hold for 30 seconds, pump should self-prime.

### **All Units**

Turn on vacuum motor/s one at a time to avoid excessive power draw. It is a good idea to test for colour fastness on an out of the way area of the carpet or upholstery before commencing to clean the entire area.

After cleaning a small area, check the vacuum recovery tank for excess foam. If there is a lot of foam present, defoamer must be added or possible vacuum motor flooding could occur, as the foam is not dense enough to activate the float shut off mechanism.

When recovery tank is full the float will cut off the intake suction. The vacuum motor will race and change sound indicating it is time to empty unit. The PR 100 and 375 drains easily into a 20L pail or toilet.

## **Daily Maintenance Procedures**

### **Clean Water Tank**

Vacuum out remaining solution using hose from recovery tank. Check and clean water filter (screw in type). Add 1 or 2 liters of clean water and flush out pump hoses and accessories. This will stop chemical damage and residue build up from solutions left in pump system. Chemical damage can void warranty.

### **Recovery Tank**

Drain and rinse recovery tank. Remove and clean lint buildup away from screen on float assembly and the foam lint filter sitting at the top of the vacuum stack. Reassemble before putting away in storage.

### **Vacuum Motor/s**

Run vacuum motor/s for one minute once unit is clean to help dry it out and inhibit rust.

### **Storage**

Store machine with vacuum lid open or ajar to allow free movement of air to vacuum motor/s. This will alleviate odors and facilitate good drying out of vacuum system.

## **WARNING**

Use properly grounded electrical circuits only. Do not allow unit to freeze. Use windshield washer anti-freeze in solution tank, lines and accessories if unit is to be transported in extremely cold weather. Flush out anti-freeze before using unit on carpet.

## **TIPS**

**SPRAY NOZZLES:** Nozzles are factory set for correct height and angle of attack. For maximum effectiveness, the spray should be directed vertically into the carpet pile. To clear plugged nozzles, remove and blow out and rinse in water or scrub with a stiff tooth brush. Do not push wires or needles through the jet opening, this can destroy the spray pattern.

**ACCESSORIES:** periodically clean the narrow vacuum slot on the bottom of the scrub wand and upholstery tool.

**CHEMICALS:** Use correct dilutions of a low foam carpet shampoo. Pre-spotters, deodorizers, etc, should be applied with a separate system (i.e. tank sprayers), to reduce the risk of chemical damage to pumps.

# EXTRACTEURS PREMIER POUR TAPIS MANUEL D'INSTRUCTIONS (PR- 60/100/375)

## **MODE D'EMPLOI**

Nettoyez la moquette à l'aspirateur. (ne pas utiliser l'extracteur pour l'aspiration a sec.)

Videz tout antigel du réservoir.

Remplissez le réservoir d'eau avec de l'eau chaude.

Ajoutez un produit chimique d'extraction à faible moussage.

Attachez le boyau d'aspiration et lignes de solution au réservoir et aux accessoires.

## **PR-60 & PR-100**

Mettez la pompe en marche. Laissez la pompe fonctionner pour quelques instants pour développer la pression nécessaire. Elle s'arrêtera automatiquement ensuite. Les modèles PR-60 et PR-100 sont équipés d'une pompe a demande qui ne fonctionne que lorsque vous vaporisez de la solution.

L'introduction d'air dans les lignes provoquer un bouchon d'air qui pourrait empêcher la pompe de s'arrêter automatiquement. Dans un tel cas, vous n'avez qu'à faire passer un peu de solution par l'outil pour éliminer le bouchon d'air. Tout bouchon d'air dans le système sera éliminé. Répéter cette procédure lorsque l'appareil devient sec ou n'est pas utilisé pour une période prolongée.

## **PR-375**

Amorcer la pompe se servant d'un bout de boyau court (MP-70380) afin de réduire la possibilité de créer un bouchon d'air.

Se servir de nettoyeurs avec pH neutre seulement et rincer l'appareil tout le temps avec de l'eau Claire, après chaque usage. En général, les pompes a pression élevée sont plus en risqué d'avoir des problèmes associés avec les produits chimiques.

Le modèle PR-375 a un régulateur disponible comme accessoire seulement (MP-70375). Tournez dans le sens inverse des aiguilles d'une montre pour réduire la pression et dans le sens des aiguilles d'une montre pour augmenter la pression. Ne pas trop resserrer. Lorsque la pression est augmentée, surveillez l'indicateur et arrêter de tourner le bouchon aussitôt que le plus haut point de pression est atteint. En général, a peu près 425 ppc.

## **TOUT MODELES**

Mettez les moteurs d'aspiration en marche l'un après l'autre pour éviter une demande excessive de courant. Commencez le nettoyage, il est conseillé de tester la solidité de la couleur sur une partie de la moquette ou du capitonnage peu visible. Examinez le réservoir de récupération après avoir nettoyé une petite superficie pour voir s'il y a trop de mousse. Vous devez ajouter un produit antimousse s'il y a trop de mousse ou risquer le noyage du moteur d'aspiration parce que la mousse n'est pas assez dense pour activer le mécanisme d'interruption à flotteur.

Lorsque le réservoir de récupération est plein le flotteur coupera l'aspiration. Le moteur s'emballera et le changement du son vous indiquera qu'il est temps du réservoir. Les modèles PR-100 et PR-375 se vident facilement dans un seau de 20 litres ou un bol de toilette.

## **ENTRETIEN QUOTIDIEN**

### **Réservoir d'eau**

Videz la solution restante en utilisant le boyau du réservoir de récupération. Examinez et nettoyez le filtre d'eau (type a vis). Ajoutez un ou deux litres d'eau propre et lavez la pompe, les boyaux et les accessoires. Ceci prévient les dommages chimiques et l'accumulation des résidus laissés dans le système de pompage par les solutions. Les dommages chimiques peuvent annuler le garanti.

### **Réservoir de récupération**

Vider et rincer le réservoir de récupération. Enlevez la charpie du tamis sur le mécanisme flotteur ou du filtre à charpie en mousse sous la plaque d'arrêt. Le tamis et le filtre sont situés à l'intérieur du réservoir de récupération.

### **Moteur d'aspirateur**

Faites marcher le moteur d'aspirateur pour une minute après avoir nettoyé l'appareil pour le sécher et prévenir la rouille.

### **Entreposage**

Laissez le couvercle de l'aspirateur ouvert lorsque vous l'entrez pour permettre l'air de circuler autour du moteur d'aspiration. Ceci mitigera les odeurs et aidera à sécher le système d'aspiration.

### **Avertissement**

N'utilisez que les circuits électriques mis à la terre. Ne permettez pas l'appareil de geler. Employer de l'antigel pour lave-glace dans le réservoir de solution, les lignes et les accessoires s'il est nécessaire de transporter l'appareil lorsqu'il fait très froid. Éliminez l'antigel par rinçage avant de l'utiliser sur une moquette.



## **Suggestions**

**GICLEURS:** Les gicleurs sont réglés à l'usine pour assurer la bonne hauteur et le bon angle d'attaque. Le jet doit se diriger verticalement vers les fibres. Pour nettoyer les gicleurs bouches détaches-les et rincez-les à l'eau ou frotter avec une brosse à dents. N'essayez pas de nettoyer les gicleurs avec un fil métallique ou une aiguille parce que vous risquerez de déranger le réglage des jets.

**ACCESSOIRES:** Nettoyez périodiquement l'encoche d'aspiration au dessous du tube frotteur et de l'outil de capitonnage.

**PRODUITS CHIMIQUES:** Se servir de quantités recommandées de shampooing à faible moussage. Les produits pour taches et les désodorisants doivent être appliqués utilisant un système séparé (ex. pulvérisateurs à réservoir), afin de réduire les dommages que les produits chimiques peuvent causer aux pumps.

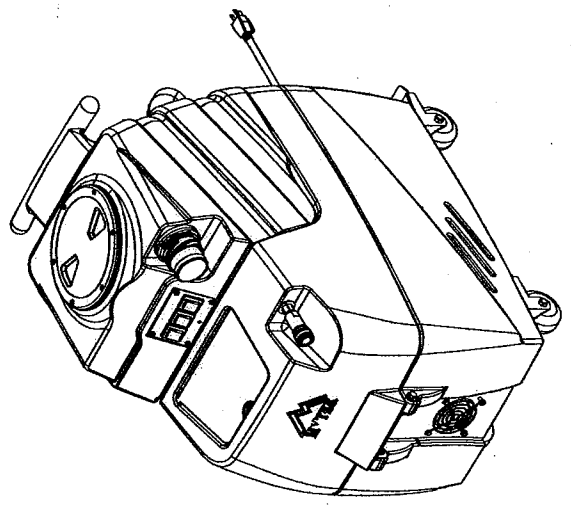
8 7 6 5 4 3 2 1

| ITEM NO. | PART NO. | DESCRIPTION  | QTY. |
|----------|----------|--|------|
| 1        | B136     | elbow, brass, 90 deg, 1/4" mpt x 1/4" mpt          | 1    |
| 2        | AH184    | hose, 3/8" x 1/4" (OAL), f                         | 1    |
| 3        | B105     | bushing, brass, 3/8" mpt x 1/4"                    | 2    |
| 4        | H222     | screw, #10-32 x 1-1/4" phl pan head, zinc          | 4    |
| 5        | H210     | washer, 1/4" flat, s/s                             | 24   |
| 6        | H273     | nut, kep, #10-32 zinc                              | 5    |
| 7        | C305     | pump, 120psi, demand, 115V                         | 1    |
| 8        | B160     | adapter, brass, 1/2" barb x 3/8" fsw, ball end     | 1    |
| 9        | H347     | clamp, hose, 5/16-29/32                            | 4    |
| 10       | B172     | elbow, brass, 90 deg, 1/2" barb x 3/8" mpt         | 1    |
| 11       | PH615-20 | sol hose, 1/2" kurl, 100psi                        | 1    |
| 12       | H206     | screw, 10-32 x 5/8", hex head, zinc                | 4    |
| 13       | H276     | guard, cooling fan, wire                           | 3    |
| 14       | C317     | fan, cooling, 115V                                 | 1    |
| 15       | H343     | screw, #10 x 5/8" hex head, zinc                   | 9    |
| 16       | P791     | base, spyder                                       | 1    |
| 17       | H216     | nut, lock, 1/4-20 nylon insert                     | 21   |
| 18       | H667     | caster, 3", Black Hub, Gray Tread                  | 4    |
| 19       | H202     | bolt, 1/4-20 x 3/4" hex head, s/s                  | 1    |
| 20       | H221     | nut, lock, 1/2" steel                              | 1    |
| 21       | H220     | fitting, strain relief, cord                       | 1    |
| 22       | E531     | power cord, end, 25', 12/3 black                   | 1    |
| 23       | G059     | exhaust boot, plastisol                            | 1    |
| 24       | H217     | clamp, hose, 2-1/4 dia                             | 2    |
| 25       | H256     | screw, #10-32 x 3/4" phl pan head, zinc            | 1    |
| 26       | P735     | manifold, single vac, no gasket                    | 1    |
| 27       | PH627-24 | vac hose, 1-1/2", wire reinforced                  | 1    |
| 28       | H300     | cuff, black 1-1/2"                                 | 1    |
| 29       | H768     | bolt, 1/4-20 x 3/4" serrated hex flange, zinc      | 6    |
| 30       | C302     | vac motor, 3 stage, 120V, tangential               | 1    |
| 31       | G004     | gasket, vacuum motor                               | 1    |
| 32       | H501     | vac support, 3 stage, 4-1/16"                      | 3    |
| 33       | H330     | plate, single manifold, 6.5" x 9"                  | 1    |
| 34       | P965     | cover, sol tank, spyder                            | 1    |
| 35       | H215     | nut, hex, 1/4-20 s/s                               | 1    |
| 36       | H213     | washer, 1/4" lock, s/s                             | 3    |
| 37       | H211     | washer, 1/4" id x 1" od, flat, s/s                 | 2    |
| 38       | G052     | washer, buna 1-1/8" od x 3/16" id                  | 2    |
| 39       | H203     | bolt, 1/4-20 x 1-1/4" hex head                     | 1    |
| 40       | P792     | sol tank, spyder                                   | 1    |
| 41       | H912     | bracket, rear, fb/spy                              | 1    |
| 42       | H770     | ball, 1/4-20 x 1/2" serrated hex flange, zinc      | 8    |
| 43       | H307     | washer, star, 1/4" steel zinc                      | 2    |
| 44       | H316     | bolt, 1/4-20 x 1-1/2" hex head, s/s                | 2    |
| 45       | H379     | bracket, front, kodak                              | 1    |
| 46       | H201     | bolt, 1/4-20 x 1/2", hex head, zinc                | 2    |
| 47       | B119     | filter, strainer, 1/4"                             | 1    |
| 48       | H212     | washer, 9/16" id x 1" od, flat, s/s                | 6    |
| 49       | B107     | nipple, brass, 1/4" m, hex                         | 3    |
| 50       | B103     | elbow, brass, 90 deg, 1/4" mpt x 1/4" fpt          | 3    |
| 51       | B102     | qd, brass, 1/4" f                                  | 1    |
| 52       | B111     | adapter, brass, extender, 1/4" mpt x 1/4" fpt, hex | 1    |
| 53       | H413     | washer, nylon, 9/16" id x 1-1/16" od x .031        | 2    |
| 54       | AH157    | hose, 3/8" x 9" (OAL), f.x.f, surge, 1600psi       | 1    |
| 55       | PH633-6  | adapter, pvc, 1-1/2" fms x fmp                     | 1    |
| 56       | H297     | PIPE, PVC, 1-1/2" x 7-1/2" I.G.                    | 1    |
| 57       | P755     | screw, #8 x 1/2", hex head, zinc                   | 3    |
| 58       | P755     | elbow, U, 180, 1-1/2", float                       | 1    |
| 59       | H235     | float, 1.5", ball style                            | 1    |
| 60       | H246     | screw, #8-32 x 3/8" SHCS, alloy                    | 4    |
| 61       | E515     | switch, rocker, 2 position                         | 3    |
| 62       | H636     | plate, switch, ml/trkr, 3 hole                     | 1    |

**ITEMS NOT SHOWN**

| PART NO. | DESCRIPTION                                  | QTY. |
|----------|--|------|
| A935     | sol hose, pigtail, 1/8 x 7 1/2               | 1    |
| A942     | so hose, 1/4" x 16, 3000 psi                 | 1    |
| B101     | quick disconnect, male, 1/4" male x 1/4" fpt | 2    |
| B102     | quick disconnect, 1/4" female x 1/4" fpt     | 1    |
| G008     | piglet filter                                | 1    |
| G147     | strap, velcro w/buckle                       | 2    |
| H110     | Cuff-Lynx, 2" hose x 2" fem swivel Cuff-Lynx | 1    |
| H141     | Cuff-Lynx, 2" to 1.5" reducer                | 1    |
| H230     | screw, 10-32 x 1/2", phl pan head, s/s       | 4    |
| H282     | tool, uph, s/s w/valve                       | 1    |
| H701     | hose, vac, 15 x 1-1/4", 1-1/2" cuffs         | 1    |

**PRE 60**

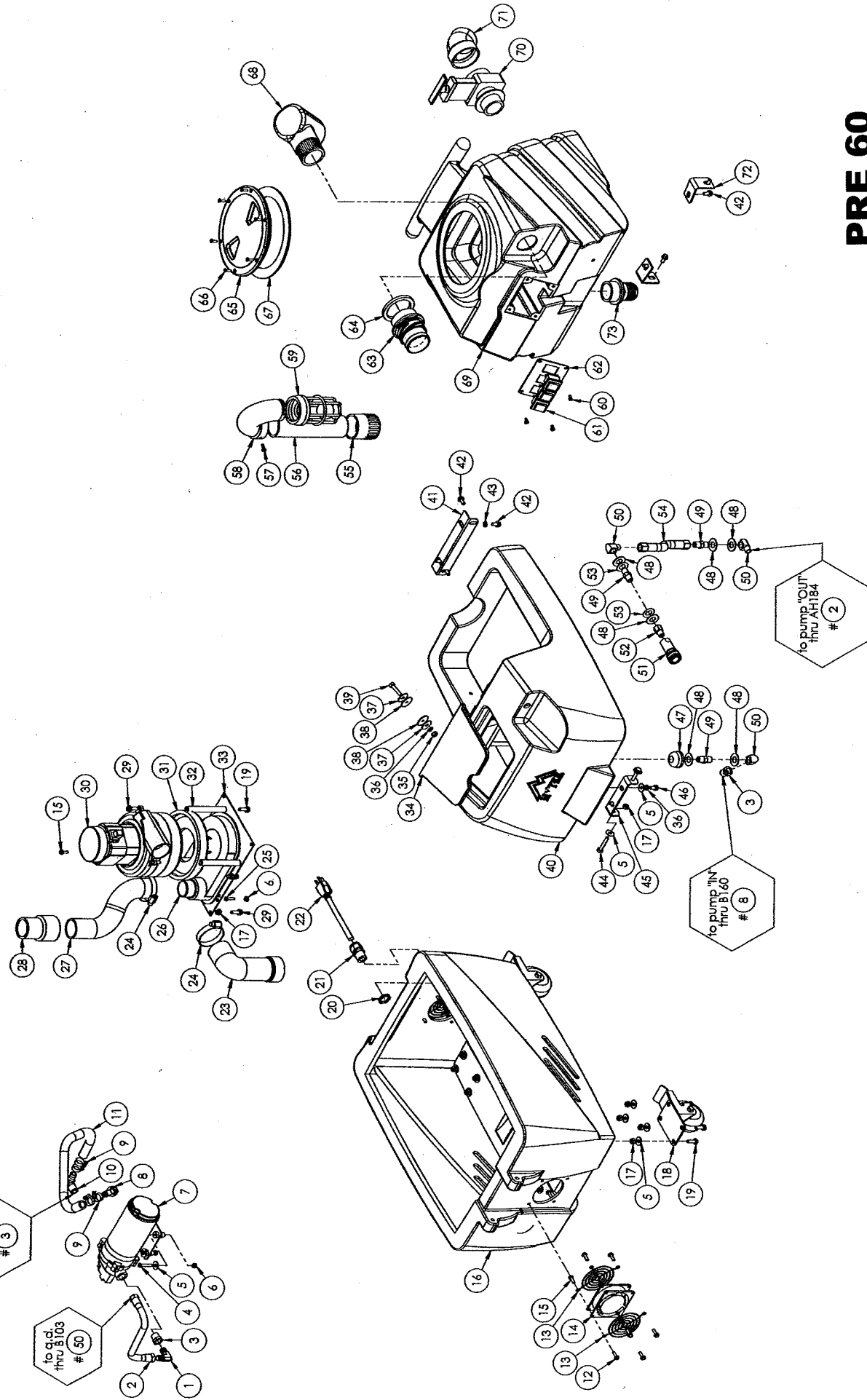


|          |        |
|----------|--------|
| DESIGNED | DATE   |
| CHECKED  | 4/7/11 |
| APPROVED |        |

PROPERTY AND CONFIDENTIAL INFORMATION OF THE UNITED STATES GOVERNMENT. REPRODUCTION OR TRANSMISSION IN ANY FORM OR BY ANY MEANS IS PROHIBITED WITHOUT THE WRITTEN PERMISSION OF THE UNITED STATES GOVERNMENT.

SCALE: 1:16

SHEET 1 OF 2



# PRE 60

FOR PARTS AND CONSTRUCTION DRAWINGS SEE THE PROPERTY OF THE MANUFACTURER. REPRODUCTION IN WHOLE OR IN PART WITHOUT THE PERMISSION OF THE MANUFACTURER IS PROHIBITED.

REV OD  
 DWG. NO. C 602GH  
 SCALE: 1:6

SHEET 2 OF 2

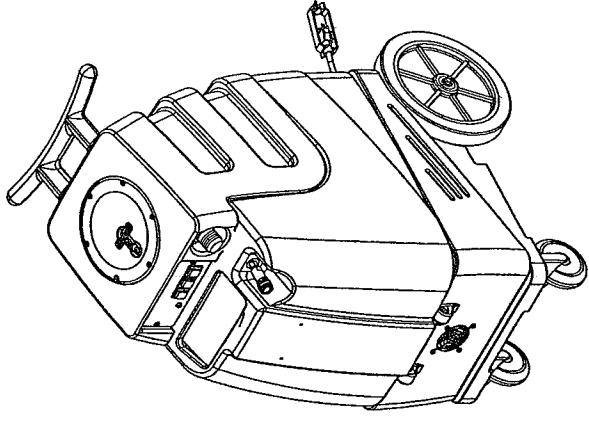
| ITEM NO. | PART NO. | DESCRIPTION  | QTY. |
|----------|----------|--|------|
| 1        | H343     | screw, 10 x 5/8" hex head, zinc                    | 8    |
| 2        | H296     | guard, cooling fan, wire                           | 3    |
| 3        | C317     | fan, cooling, 115V                                 | 1    |
| 4        | H206     | screw, 10-32 x 5/8" hex head, zinc                 | 4    |
| 5        | H204     | bolt, 1/4-20 x 1-3/4" hex head, s/s                | 1    |
| 6        | H210     | washer, 1/4" flat, s/s                             | 19   |
| 7        | H213     | washer, 1/4" lock, s/s                             | 4    |
| 8        | H378     | bracket, front hinge, sp/lb                        | 1    |
| 9        | H201     | bolt, 1/4-20 x 1/2" hex head, zinc                 | 2    |
| 10       | H216     | nuf. lock, 1/4-20 nylon insert                     | 13   |
| 11       | H316     | bolt, 1/4-20 x 1-1/2" hex head, s/s                | 1    |
| 12       | H666     | caster, 5"   | 2    |
| 13       | H342     | bolt, 1/4-20 x 1" hex head, s/s                    | 8    |
| 14       | H202     | bolt, 1/4-20 x 3/4" hex head, s/s                  | 6    |
| 15       | P731     | base, speedster                                    | 1    |
| 16       | H371     | axle, 18.25" x .50" dia                            | 1    |
| 17       | H254     | washer, axle, cut 1/2" ld                          | 4    |
| 18       | H251     | wheel, 12"   | 2    |
| 19       | H219     | cap. axle, 1/2"                                    | 2    |
| 20       | H221     | nuf. lock, 1/2" steel                              | 1    |
| 21       | H220     | fittings, strain relief, cord                      | 1    |
| 22       | E550     | power cord, pigtail, 30", 12/3, black              | 1    |
| 23       | G131     | connector, cord lock                               | 1    |
| 24       | G052     | washer, buna 1-1/8" od x 3/16" ld                  | 4    |
| 25       | H211     | washer, 1/4" id x 1" od, flat, s/s                 | 4    |
| 26       | P732     | sol tank, speedster                                | 1    |
| 27       | B119A    | filter, strainer, 1/2"                             | 1    |
| 28       | B210     | bushing, brass, 1/2" mpt x 3/8" fpt, hex           | 1    |
| 29       | H299     | washer, 1/16" id x 1-1/2" od x .075, s/s           | 5    |
| 30       | B216     | nipple, brass, 3/8" x close                        | 1    |
| 31       | B186     | elbow, brass, 90 deg, 3/8" mpt x 3/8" fmp          | 1    |
| 32       | B102     | qd. brass, 1/4" f                                  | 1    |
| 33       | B111     | adapter, brass, extender, 1/4" mpt x 1/4" fpt, hex | 1    |
| 34       | H212     | washer, 9/16" id x 1" od, flat, s/s                | 4    |
| 35       | B107     | nipple, brass, 1/4" m, hex                         | 2    |
| 36       | B103     | elbow, brass, 90 deg, 1/4" mpt x 1/4" fpt          | 2    |
| 37       | AH105    | hose, 3/8" x 24 1/2", (OAL)                        | 1    |
| 38       | H246     | screw, #8-32 x 3/8" SHCS, alloy                    | 2    |
| 39       | H612     | washer, #8 flat, s/s                               | 3    |
| 40       | H389     | screw, #10-32 x 1/2" SHCS, alloy                   | 1    |
| 41       | E515     | switch, rocker, 2 position                         | 3    |
| 42       | H338     | plate, switch, sp, 3 hole                          | 1    |
| 43       | H273     | nut, kep, #10-32 zinc                              | 9    |
| 44       | H215     | nut, hex, 1/4-20 s/s                               | 8    |
| 45       | H203     | bolt, 1/4-20 x 1-1/4" hex head                     | 2    |
| 46       | P733     | vac tank, speedster                                | 1    |
| 47       | H347     | clamp, hose, 5/16-29/32                            | 4    |
| 48       | H770     | bolt, 1/4-20 x 1/2" serrated hex flange, zinc      | 8    |
| 49       | H390A    | bracket, "L" (all extractors)                      | 2    |
| 50       | H229     | fittings, inlet, pvc, 1-1/2", gray                 | 1    |
| 51       | G001     | gasket, inlet, 1.80" i.d.                          | 1    |
| 52       | A925     | elbow, inlet assy 1-1/2"                           | 1    |
| 53       | H225     | valve, drain, 1-1/2"                               | 1    |
| 54       | H226     | spout, drain, 45 degree                            | 1    |

| ITEM NO. | PART NO. | DESCRIPTION   | QTY. |
|----------|----------|---|------|
| 55       | P685     | inlet, 2"   | 1    |
| 56       | G002     | gasket, cam fitting polyethylene, 2.35" OD 1.90" ID     | 1    |
| 57       | P684     | adapter, pvc 2, fmsl x fmt                              | 1    |
| 58       | P682-12  | pipe, pvc, 2"   | 1    |
| 59       | H490     | float, 2", ball style                                   | 1    |
| 60       | H297     | screw, #8 x 1/2", hex head, zinc                        | 3    |
| 61       | P726     | elbow, 2" float   | 1    |
| 62       | G091     | gasket, 7", vac lid                                     | 1    |
| 63       | G090     | lid, vac tank, black, 7"                                | 1    |
| 64       | H304     | screw, #8 x 5/8 phil oval, s/s                          | 6    |
| 65       | G018     | cover, sol tank (sp)                                    | 1    |
| 66       | H912     | bracket, rear, fb/spy                                   | 1    |
| 67       | H307     | washer, star, 1/4" steel zinc                           | 2    |
| 68       | H253     | plate, dual manifold, 9" x 13"                          | 1    |
| 69       | P735     | manifold, single vac, no gasket                         | 2    |
| 70       | G004     | gasket, vacuum motor                                    | 2    |
| 71       | H768     | bolt, 1/4-20 x 3/4" serrated hex flange, zinc           | 9    |
| 72       | PH628-8  | vac hose, 2", black, wire reinforced                    | 1    |
| 73       | H217     | clamp, hose, 2-1/4 dia                                  | 4    |
| 74       | C301     | vac motor, 2 stage, 11.5V, tangential                   | 2    |
| 75       | PH628-24 | vac hose, 1-1/2", black, wire reinforced                | 1    |
| 76       | H544     | cuff hose, 2 X 2, wire reinforced                       | 1    |
| 77       | H500     | vac support, 2 stage, 3-1/8"                            | 1    |
| 78       | G059     | exhaust boot, plastisol                                 | 1    |
| 79       | AH108S   | sol hose, 1/4" x 24 1/2" (OAL)                          | 1    |
| 80       | B136     | elbow, brass, 90 deg, 1/4" mpt x 1/4" mpt               | 1    |
| 81       | B105     | bushing, brass, 3/8" mpt x 1/4"                         | 1    |
| 82       | C305     | pump, .20psi, demand, 11.5V                             | 1    |
| 83       | H222     | screw, #10-32 x 1-1/4" phil pan head, zinc              | 4    |
| 84       | B172     | elbow, brass, 90 deg, 1/2" barb x 3/8" mpt              | 1    |
| 85       | PH615-24 | sol hose, 1/2" kurl 100psi                              | 1    |
| 86       | B160     | adapter, brass, 1/2" barb x 3/8" fsw, ball end          | 1    |
| 87       | H256     | screw, #10-32 x 3/4" phil pan head, zinc                | 1    |
| 88       | E525     | terminal block, heyco                                   | 1    |
| 89       | H186     | screw, 10-32 x 3/4", phil flat full thread, black oxide | 2    |
| 90       | E583     | circuit breaker, 10Amp                                  | 2    |

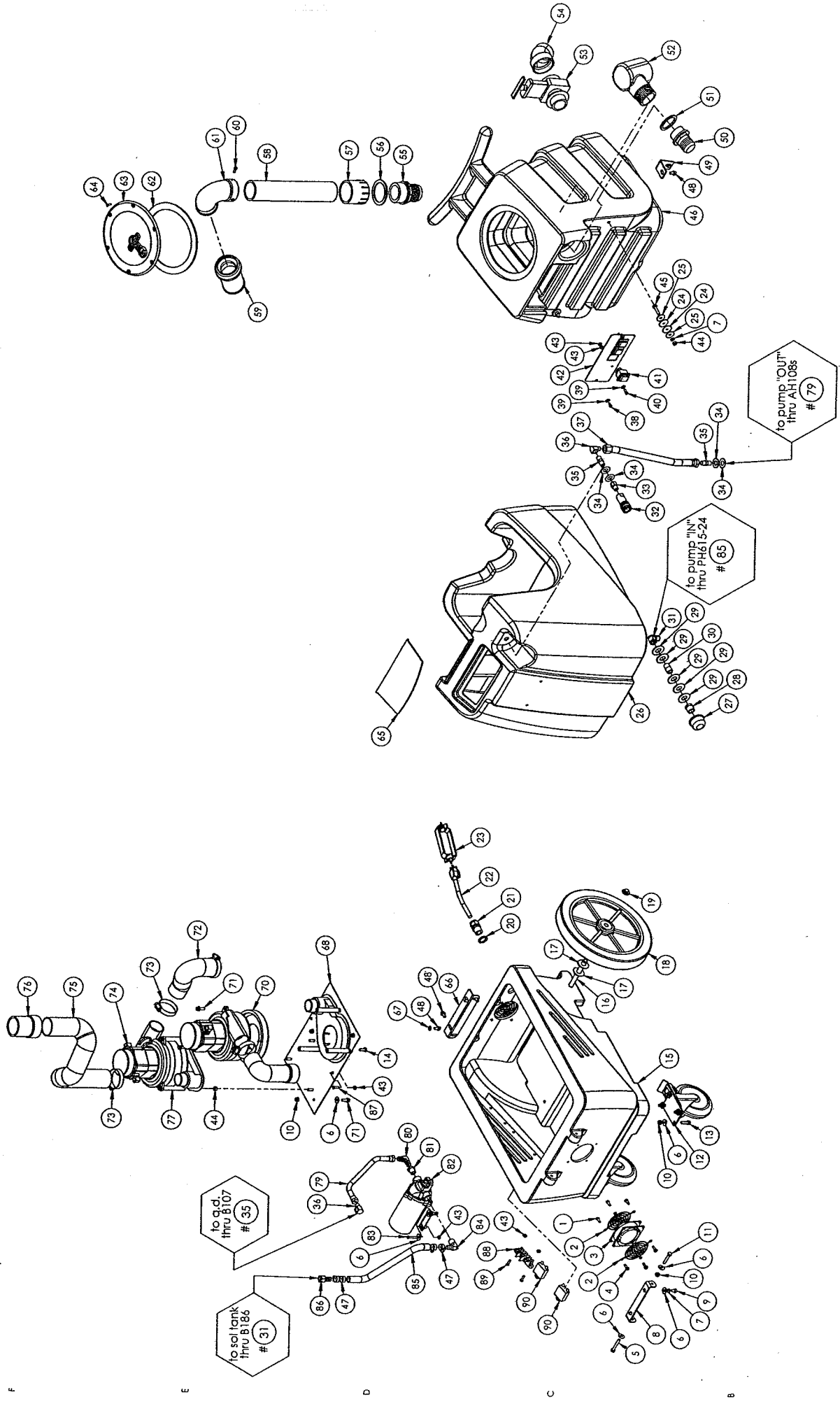
ITEMS NOT SHOWN

| PART NO. | DESCRIPTION                             | QTY |
|----------|---|-----|
| G085     | gasket, strip, 3/4" x 36" x 1/8"        | 1   |
| G010     | filter, bag, vac tank, drawstring       | 1   |
| H375     | hanger, wire formed, hose               | 1   |
| H230     | screw, 10-32 x 1/2", phil pan head, s/s | 2   |
| E530     | power cord, ext, 50', 12/3 black        | 1   |
| G147     | strap, velcro, w/buckle                 | 10  |
| A943     | sol, hose, 1/4" x 25' 7", 3000          | 1   |
| H294     | vac hose, 1-1/2" x 25 SW                | 1   |
| B101     | qd. male, 1/4" male x 1/4" fpt          | 1   |
| B102     | qd., 1/4" female x 1/4" fpt             | 1   |

# PRE100



DRAWN: J. Cash  
 CHECKED:  
 DATE: 3/23/11  
 TITLE:  
 burg 115v  
 2-2 stg series  
 C 1000-GH OD  
 REV 0D  
 PRIMARY AND CONFIDENTIAL  
 THIS DRAWING IS THE PROPERTY OF  
 WHITE PRODUCTS, INC. ANY  
 REPRODUCTION OR TRANSMISSION  
 WITHOUT THE WRITTEN PERMISSION OF  
 WHITE PRODUCTS, INC. IS  
 PROHIBITED.



# PRE 100

burg 115v  
 2-2 stg series  
 REV C 1000-GH OD  
 SCALE: 1:8  
 SHEET 2 OF 2

PROPRIETARY AND CONFIDENTIAL  
 THE INFORMATION CONTAINED IN THIS DRAWING IS THE PROPERTY OF  
 WATER PUMP CO., INC. AND IS NOT TO BE  
 REPRODUCED OR TRANSMITTED IN ANY FORM OR BY ANY MEANS, ELECTRONIC OR MECHANICAL, WITHOUT THE WRITTEN PERMISSION OF  
 WATER PUMP CO., INC.

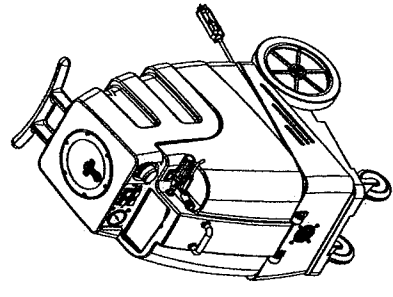
8 7 6 5 4 3 2 1

| ITEM NO. | PART NO. | DESCRIPTION  | QTY. |
|----------|----------|--|------|
| 1        | C317     | fan, cooling, 115V                                     | 1    |
| 2        | H296     | guard, cooling fan, wire                               | 3    |
| 3        | H343     | screw, #10 x 5/8" hex head zinc                        | 13   |
| 4        | H378     | bracket, front hinge, sp/1b                            | 1    |
| 5        | H210     | washer, 1/4" flat, s/s                                 | 23   |
| 6        | H213     | washer, 1/4" lock, s/s                                 | 4    |
| 7        | H201     | bolt, 1/4-20 x 1/2", hex head, zinc                    | 2    |
| 8        | H216     | nut, lock, 1/4-20 nylon insert                         | 17   |
| 9        | H316     | bolt, 1/4-20 x 1-1/2" hex head, s/s                    | 2    |
| 10       | H202     | bolt, 1/4-20 x 3/4" hex head, s/s                      | 18   |
| 11       | H666     | caster, 5"   | 2    |
| 12       | P731GH   | base, speedster  | 1    |
| 13       | H254     | washer, axle, cut 1/2" id                              | 3    |
| 14       | H371     | axle, 18.25" x .50" dia                                | 1    |
| 15       | H251     | wheel, 12"   | 2    |
| 16       | H219     | cap, axle, 1/2"  | 2    |
| 17       | G131     | connector, cord lock                                   | 1    |
| 18       | E550     | power cord, pigtail, 30', 12/3, black                  | 1    |
| 19       | H220     | fitting, strain relief, cord                           | 1    |
| 20       | H221     | nut, lock, 1/2" steel                                  | 1    |
| 21       | H912     | bracket, rear, 1b/spy                                  | 1    |
| 22       | H307     | washer, star, 1/4" steel zinc                          | 2    |
| 23       | H770     | bolt, 1/4-20 x 1/2" serrated hex flange, zinc          | 8    |
| 24       | E583     | circuit breaker, 10Amp                                 | 2    |
| 25       | E525     | terminal block, heycu                                  | 1    |
| 26       | H186     | screw, 10-32 x 3/4", phl flat full thread, black oxide | 2    |
| 27       | H273     | nut, kep, #10-32 zinc                                  | 4    |
| 28       | B107     | nut, kep, #10-32 zinc                                  | 4    |
| 29       | AH108S   | sol hose, 1/4" x 24 1/4"                               | 2    |
| 30       | B103     | elbow, brass, 90 deg, 1/4" mpt x 1/4" fpt              | 2    |
| 31       | B135     | tee, brass, 1/4" mpt                                   | 2    |
| 32       | B105     | bushing, brass, 3/8" mpt x 1/4"                        | 1    |
| 33       | C313     | pump, 500 psi, 115V                                    | 1    |
| 34       | B172     | elbow, brass, 90 deg, 1/2" barb x 3/8" mpt             | 3    |
| 35       | H347     | clamp, hose, 5/16-29/32                                | 8    |
| 36       | PH615-10 | sol hose, 1/2" kurl 100 psi                            | 1    |
| 37       | B246     | tee, brass, 3/8" fpt x 3/8" mpt, hex                   | 5    |
| 38       | B242     | tee, brass, 3/8" fpt x 3/8" mpt x 3/8" fpt             | 1    |
| 39       | PH615-36 | sol hose, 1/2" kurl 100 psi                            | 1    |
| 40       | B160     | adapter, brass, 1/2" barb x 3/8" fsw, ball end         | 1    |
| 41       | B207     | elbow, brass, 90 deg, 1/4" fpt x 1/4" fpt              | 1    |
| 42       | H601     | plate, manifold, parallel                              | 1    |
| 43       | G059     | exhaust boot, plastisol                                | 2    |
| 44       | H217     | clamp, hose, 2-1/4 dia                                 | 3    |
| 45       | PH628-24 | vac hose, 2" wire reinforced, gray                     | 1    |
| 46       | H544     | cuff hose, 2 X 2, wire reinforced                      | 1    |
| 47       | H788     | bolt, 1/4-20 x 3/4" serrated hex flange, zinc          | 11   |
| 48       | C301     | vac motor, 2 stage, 115V, tangential                   | 2    |
| 49       | G004     | gasket, vacuum motor                                   | 4    |
| 50       | P750     | manifold, dual vac, parallel                           | 1    |
| 51       | H500     | vac support, 2 stage, 3-1/8"                           | 6    |
| 52       | P732GH   | sol tank, speedster                                    | 1    |
| 53       | G018     | cover, sol tank (sp)                                   | 1    |
| 54       | H485     | handle, breeze and ax                                  | 1    |
| 55       | G052     | washer, buna 1-1/8" od x 3/16" id                      | 6    |
| 56       | H211     | washer, 1/4" id x 1" od, flat, s/s                     | 6    |
| 57       | B119A    | filter, strainer, 1/2"                                 | 1    |
| 58       | B210     | bushing, brass, 1/2" mpt x 3/8" fpt, hex               | 1    |
| 59       | H299     | washer, 1 1/16" id x 1-1/2" od x .075, s/s             | 5    |
| 60       | B216     | nut, lock, brass, 3/8" x close                         | 1    |
| 61       | B186     | elbow, brass, 90 deg, 3/8" mpt x 3/8" fpt              | 1    |
| 62       | C313C    | regulator, 450 psi, silver spring                      | 1    |
| 63       | PH634-36 | sol hose, 1/4", 300 PSI                                | 1    |

| ITEM NO. | PART NO. | DESCRIPTION                             | QTY. |
|----------|----------|---|------|
| 64       | B109     | adapter, brass, 1/4" barb x 1/4" mpt    | 2    |
| 65       | B656     | ball valve, 1/4"                        | 1    |
| 66       | B102     | qd, brass, 1/4"                         | 1    |
| 67       | G084     | grommet, rubber, 3/4" ID x 1-5/8" OD    | 1    |
| 68       | PH634-20 | sol hose, 1/4", 300 PSI                 | 1    |
| 69       | H256     | screw, #10-32 x 3/4" phl pan head, zinc | 4    |
| 70       | H484     | plate, mounting, QD                     | 1    |
| 71       | AH195    | sol hose, 5/8" x 1/4", (OAL), m         | 1    |
| 72       | H246     | screw, #8-32 x 3/8" SHCS, alloy         | 2    |
| 73       | H612     | washer, #8 flat, s/s                    | 3    |
| 74       | H308D    | gauge, pressure, 2000 PSI               | 1    |
| 75       | H337     | plate, switch, sp, 4 hole w/gauge       | 1    |
| 76       | H422     | plug, dome 3/8", black                  | 2    |
| 77       | E515     | switch, rocker, 2 position              | 4    |
| 78       | H389     | screw, #10-32 x 1/2" SHCS, alloy        | 1    |
| 79       | H215     | nut, hex, 1/4-20 s/s                    | 2    |
| 80       | H203     | bolt, 1/4-20 x 1-1/4" hex head, zinc    | 2    |
| 81       | P733GH   | vac tank, speedster                     | 1    |
| 82       | P685     | inlet, 2"                               | 1    |
| 83       | P684     | adapter, pvc 2, fmsl x fmsl             | 1    |
| 84       | P482     | pipe, pvc, 2"                           | 1    |
| 85       | H297     | screw, #8 x 1/2", hex head, zinc        | 3    |
| 86       | G091     | gasket, 7", vac lid                     | 1    |
| 87       | G090     | lid, vac tank, black, 7"                | 1    |
| 88       | H304     | screw, #8 x 5/8 phl oval, s/s           | 6    |
| 89       | P726     | elbow, 2" float                         | 1    |
| 90       | H490     | float, 2", ball style                   | 1    |
| 91       | H225     | valve, drain, 1-1/2"                    | 1    |
| 92       | H226     | spout, drain, 45 degree                 | 1    |
| 93       | A926     | elbow, inlet assembly 2"                | 1    |
| 94       | G083     | gasket, 2" inlet                        | 1    |
| 95       | H135     | Cuff-Lynx, 2" m cuff x 2" mpt           | 1    |
| 96       | H390A    | bracket, 1" (all extractors)            | 2    |

ITEMS NOT SHOWN

| PART NO. | DESCRIPTION                                  | QTY. |
|----------|--|------|
| A943     | sol hose, 1/4" x 25', 3000 psi               | 1    |
| B101     | quick disconnect, male, 1/4" male x 1/4" fpt | 1    |
| B102     | quick disconnect, 1/4" female x 1/4" fpt     | 1    |
| E530     | power cord, ext 50', 12/3, black             | 1    |
| E544     | controller, circuit light                    | 1    |
| G008     | piglet filter                                | 1    |
| G147     | strap, velcro, w/buckle                      | 5    |
| H110     | Cuff-Lynx, 2" hose x 2" fem swivel Cuff-Lynx | 1    |
| H141     | Cuff-Lynx, 2" to 1.5" reducer                | 1    |
| H230     | screw, 10-32 x 1/2" phl pan head, s/s        | 2    |
| H294     | vac hose, 1-1/2" x 23'                       | 1    |
| H375     | hanger, wire formed, hose                    | 1    |



PRE 375

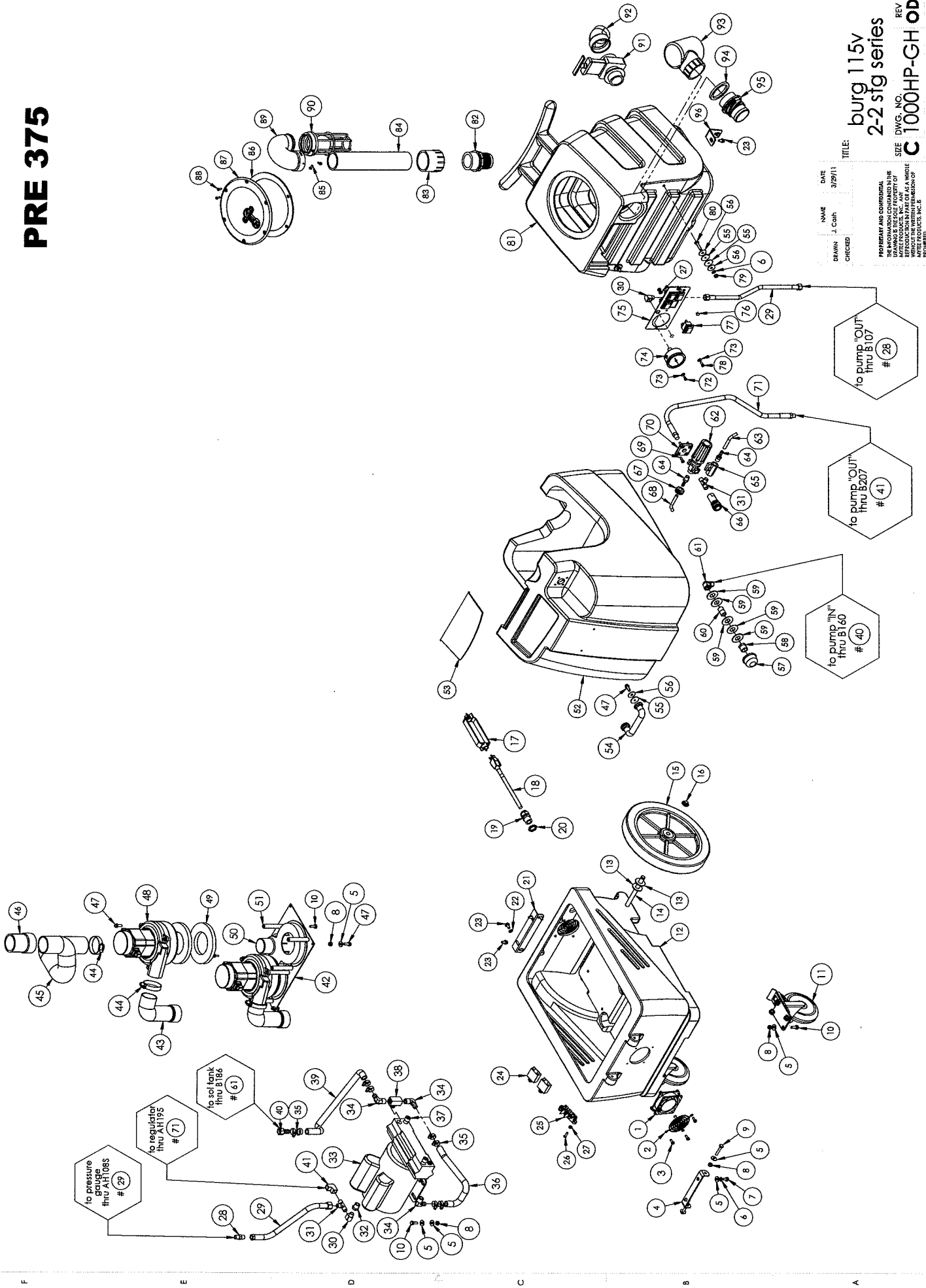
PROPERTY AND CONFIDENTIAL DRAWING OF THE COMPANY. THIS DRAWING IS THE PROPERTY OF THE COMPANY AND IS NOT TO BE REPRODUCED OR COPIED WITHOUT THE WRITTEN PERMISSION OF THE COMPANY.

DATE: 3/29/11  
 DRAWN BY: J. Cohn  
 CHECKED: [ ]

SCALE: 1:12  
 SHEET 1 OF 2

burg 115v  
 2-2 sf9 series  
 REV: C1000HP-GH OD

# PRE 375



NAME: J. Coth  
DATE: 5/29/11  
CHECKED:

TITLE: burg 115v  
2-2 sig series  
C 1000HP-GH OD  
REV

PROFITABLE AND CONFIDENTIAL  
THE INFORMATION CONTAINED IN THIS  
DRAWING IS THE PROPERTY OF  
AVELLE PRODUCTIONS, INC. ANY  
REPRODUCTION OR TRANSMISSION OF  
THIS DRAWING WITHOUT THE WRITTEN PERMISSION OF  
AVELLE PRODUCTIONS, INC. IS  
FORBIDDEN.

SCALE: 1:8  
SHEET 2 OF 2

## **PR300S Spotter**

### **OPERATING INSTRUCTIONS**

The PR300S spot extractor is equipped with a 55-psi pump and a two stage vacuum motor.

The solution and recovery tanks are 1 1/2 gallons. It is a single cord unit. The power cord is 12/3 25', and it draws about 9-amps (115v). To run effectively, use a dedicated 15-amp outlet.

**NOTE:** All units come with an 8' vacuum and solution hose assembly with 3" S/S upholstery tool.

#### **OPERATION:**

1. Plug in yellow electrical cord into a dedicated 15-amp circuit outlet.
2. Fill solution tank with water and add recommended low-foaming cleaning solution. **DO NOT OVERFILL!!**
3. Attach vacuum and solution hoses to appropriate connections on the machine and your wand. Make sure the quick disconnects snap together firmly. As you do this, always inspect hoses for cracks or fraying. Do not use if hoses are damaged.
4. Turn power switch ON, and press trigger on wand until there is a continuous flow of water. Your pump is now primed.
5. With the wand you may begin cleaning. By pulling the trigger, you will dispense the solution onto the desired area. Because the vacuum is on, the fluid will quickly be sucked back into the wand. You will notice that the area you have just cleaned will be damp. This is normal. You can use a fan to speed up the drying process.

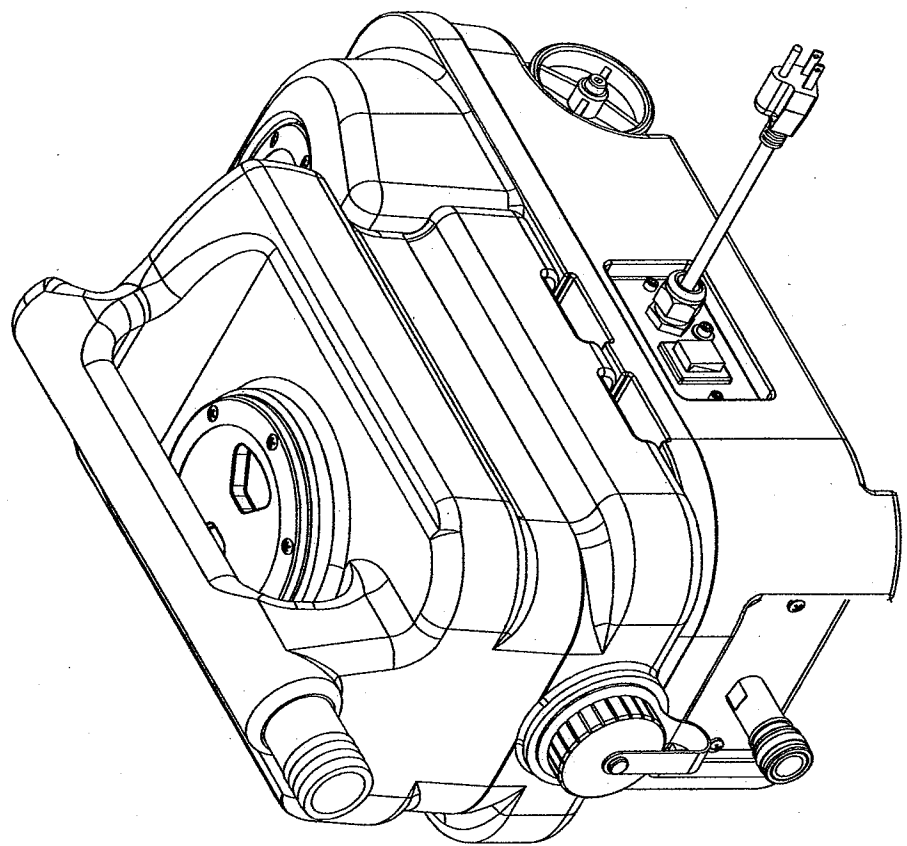


| ITEM NO. | PART NO.  | DESCRIPTION                             | QTY. |
|----------|-----------|---|------|
| 1        | H304      | screw, #8 x 5/8 phill oval, s/s         | 12   |
| 2        | G030      | lid, vac tank, 3.5", clear              | 2    |
| 3        | G039      | gasket, vac lid, 3.5", clear            | 1    |
| 4        | P728A     | sol tank, spotter                       | 1    |
| 5        | H358      | wheel, 3"                               | 2    |
| 6        | H650      | bolt, 5/16" shoulder x 1-1/2" lg, alloy | 2    |
| 7        | H221      | nut, lock, 1/2" steel                   | 1    |
| 8        | H273      | nut, kep, #10-32 zinc                   | 4    |
| 9        | H410      | plate, switch, spotter                  | 1    |
| 10       | E515      | switch, rocker, 2 position              | 1    |
| 11       | H612      | washer, #8 flat, s/s                    | 2    |
| 12       | H389      | screw, #10-32 x 1/2" SHCS, alloy        | 2    |
| 13       | H220      | fitting, strain relief, cord            | 1    |
| 14       | H246      | screw, #8-32 x 3/8" SHCS, alloy         | 2    |
| 15       | E533      | power cord, end, 25', 16/3              | 1    |
| 16       | G004      | gasket, vacuum motor                    | 1    |
| 17       | C316      | vac motor, 2 stage, 115V, peripheral    | 1    |
| 18       | H646      | plate, vac. mounting, spotter           | 1    |
| 19       | H210      | washer, 1/4" flat, s/s                  | 5    |
| 20       | H213      | washer, 1/4" lock s/s                   | 3    |
| 21       | H342      | bolt, 1/4-20 x 1" hex head, s/s         | 3    |
| 22       | B119      | filter, strainer, 1/4"                  | 1    |
| 24       | B109      | adapter, brass, 1/4" barb x 1/4" mpt    | 1    |
| 24       | PH634-B   | sol hose, 1/4" kun 150psi               | 1    |
| 25       | B131      | fitting, 1/4" barb x 1/8" FPT           | 1    |
| 26       | H884      | washer, 3/8 flat, s/s                   | 2    |
| 27       | B129      | nipple, hex, 1/8" mpt x 1/8" mpt        | 1    |
| 28       | C378      | pump, 55psi, 115V flojet                | 1    |
| 29       | H230      | screw, 10-32 x 1/2 phill pan            | 5    |
| 30       | H250      | bracket, set 55 psi pump                | 1    |
| 31       | B140      | connector, 1/4" tube push-in x 1/8" mpt | 1    |
| 32       | PH657-8   | tubing, 1/4", nylon black               | 1    |
| 33       | B166      | fitting, brass, 1/4" mpt x 1/4" push-in | 1    |
| 34       | H212      | washer, 9/16" id x 1" od, flat, s/s     | 5    |
| 35       | B102      | qd, brass, 1/4" f                       | 1    |
| 36       | H898      | plate, base & qd, spotter               | 1    |
| 37       | G058      | vac tank deflector                      | 1    |
| 38       | P728B     | vac tank, spotter                       | 1    |
| 39       | H664      | filter strainer, spotter                | 1    |
| 40       | H645      | pvc, 90, 3/4"                           | 1    |
| 41       | PH610-2.5 | pipe, pvc, 3/4"                         | 1    |
| 42       | H644      | adapter, pvc, 3/4"                      | 1    |
| 43       | B653      | nut, brass, 3/4", lock                  | 1    |
| 44       | G036      | cap, 2.5" threaded, tethered            | 1    |

**ACCESSORIES**

| PART NO. | DESCRIPTION                                  | QTY. |
|----------|--|------|
| AD127    | stop sign register your product              | 1    |
| H141     | cuff-lynx, 2" to 1.5" reducer                | 1    |
| G147     | strap, velcro, w/buckle                      | 3    |
| B101     | quick disconnect, male, 1/4" male x 1/4" fpt | 1    |
| AH135    | sol hose, 1/8" x 97', [OAL], m               | 1    |
| H360     | vac hose, 1-1/4" x 8'                        | 1    |
| B102     | quick disconnect, 1/4" female x 1/4" fpt     | 1    |
| H282     | tool, uph, s/s w/ valve                      | 1    |

**PRE300S**



|         |         |
|---------|---------|
| DATE    | 4/8/11  |
| NAME    | J. Cash |
| DRAWN   | J. Cash |
| CHECKED |         |

TITLE: **Spotter**

SIZE DWG. NO. **C S-300**

SCALE: 1:2

REV **02**

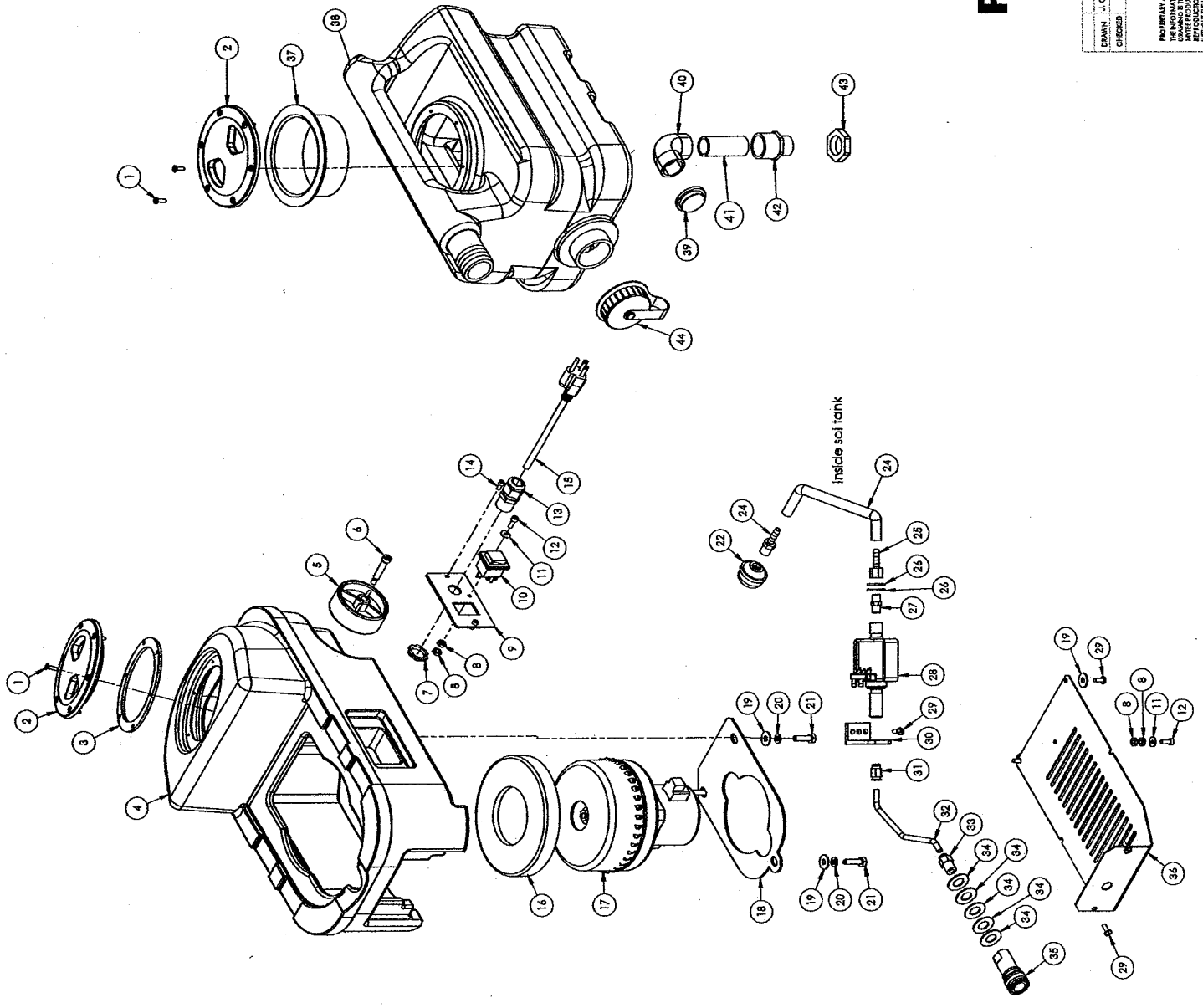
SHEET 1 OF 2

PROBABLE AND CONFIDENTIAL INFORMATION CONTAINED IN THIS DRAWING IS THE PROPERTY OF THE COMPANY AND IS NOT TO BE REPRODUCED IN ANY MANNER WITHOUT THE WRITTEN PERMISSION OF THE COMPANY.

# PRE 300S

|               |         |
|---------------|---------|
| DATE          | 4/8/11  |
| NAME          | J. Carr |
| CHECKED       |         |
| TITLE         |         |
| Spotter       |         |
| SIRE DWG. NO. | S-300   |
| REV           | OD      |
| SCALE: 1:4    |         |
| SHEET 2 OF 2  |         |

FOR ALL INFORMATION CONTACT THE MANUFACTURER. THE INFORMATION CONTAINED HEREIN IS THE PROPERTY OF THE MANUFACTURER AND IS NOT TO BE REPRODUCED OR TRANSMITTED IN ANY FORM OR BY ANY MEANS, ELECTRONIC OR MECHANICAL, INCLUDING PHOTOCOPYING, RECORDING, OR BY ANY INFORMATION STORAGE AND RETRIEVAL SYSTEM, WITHOUT THE WRITTEN PERMISSION OF THE MANUFACTURER.



## **General Safety/ Warnings**

These precautions have been written for your safety and the safety of others in mind. These precautions **MUST BE FOLLOWED** at all times to avoid serious injury, harm, and/or death, and damage to the unit.

### **Warning: To reduce the risk of fire, electrical shock, or injury:**

1. READ ALL INSTRUCTIONS BEFORE USING EXTRACTORS.
2. Use only as described in this manual. Use only manufacturer's recommended attachments.
3. Always unplug power cord from electrical outlet before attempting any adjustments or repairs.
4. Do not unplug by pulling on cord. To unplug, grasp the plug, not the cord.
5. Do not pull or carry by cord. Do not close a door on cord or pull cord around sharp edges or corners.
6. Do not run appliance over cord. Keep cord away from heated surfaces.
7. Do not use with damaged cord or plug. If cord is damaged, repair immediately.
8. Do not use outdoors or on wet surfaces and/or standing water.
9. Always unplug or disconnect the appliance from the power supply before servicing. Unplug or disconnect the appliance from power supply when not in use.
10. Do not allow to be used as a toy. Close attention is necessary when used by or near children.
11. Do not use in areas where flammable or combustible material may be present.
12. Do not leave the unit exposed to harsh weather elements. Temperatures below freezing may damage components and void warranty.
13. Use only the appropriate handles to move and lift unit. Do not use any other parts of this machine for this purpose.
14. Keep hair, loose clothing, fingers, and all parts of body away from all openings and moving parts.
15. Use extra care when cleaning on stairs
16. To reduce the risk of fire or electric shock, do not use this machine with a solid-state speed control device.