

User Manual-SMPK1021

Overview

- Refined exterior design
Unique design fits for hand.
 - Multi file format support
This player recognize MP3, WMA ,WAV and video in AMV formats.
 - Firmware upgrade available
You can download and upgrade software from website enhancing player's function.
 - E-BOOK You can download text files into the player
 - Driver free USB memory
Manage your files in USB memory without specified software, no need drivers in WIN2000 or furthers.
 - Recorder / Repeat
Voice can be recorded and saved in WAV or ACT format. Snippet/Contrast repeat available.
 - Equalizer
Normal, Rock, Pop, Classic, Soft, Jazz, DBB
-

- Play modes

Normal, Repeat One,Folder, Repeat Folder, Repeat All,Random,Intro

- Timing turning off

The player provides Sleep and battery saving mode, more convenience for you!

- Complete dynamical menu

Visualized dynamical menus with text instructions make you easy control.

Declarations

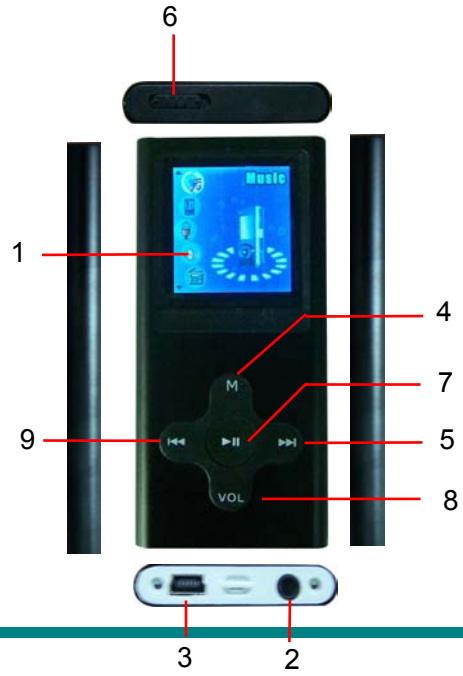
Please read this manual carefully.

Functions and performance may change without prior notice.

Know your player

- Exterior and Key

1. DISPLAY SCREEN
2. EARPHONE
3. USB
4. MENU/MODE
5. NEXT/VOL+
6. POWER ON/OFF
7. PLAY/PAUSE/STOP
8. VOL
9. PREVIOUS/VOL-



- **Displayer**



- **Battery Level**

The player shows capacity in 9 levels

- Battery is full on 3.8V. As time goes on, capacity indication will monish.
- Indicator shows blank when battery almost ran out. You should charge your battery at that time.



Please switch on the player before charge. This player cannot be charged in case of power off/



Please switch off power when not using the player.

Basic Functions

- **Access to Menus**

Press **Mode** to access menus.

- **Scrolling**

- Scroll music, menus
- Fast Forward / Reverse when playing music.

- **List of Menus**

To access different menu functions from main menu.

Main menu: (Hold **Mode** to access)



Music Mode:



Recorder Mode:

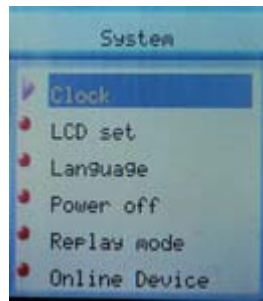


Play Mode:

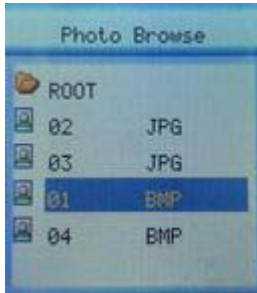


Settings:

E-Documents:



Browsing pictures:



USB Mode (Connect to PC):



- **Volume Adjust**

Press **VOL** to adjust volume, press **Next/PREVIOUS** to increase or decrease volume.

- **Switch on/off**

Press and hold **Play** to switch on when the player is off.

Press and hold **Play** to switch off when the player is on.

- **Play & Pause; exit from submenu**

On music mode, Press **Play** to play music.

When playing music, press **Play** to pause; press and hold to stop playing.

- **Start / Stop recording**

On recording mode, press **Play** to stop.

Keys Processing

- **Keys Functions Definition**

1. **Play**: Power On/Off, Play, Pause, Stop
2. **MODE (Menu)**: Enter main menu or exit from current menu.
3. **Next**: Next, FF, Volume increase
4. **PREVIOUS**: Previous, Rev, Volume decrease
5. **USB**: USB outlet
6. **Earphone**: Standard earphone outlet
7. **ON/OFF**: Power switch

- **Key Processing Definition**

Keys processing includes 2 actions: Press , Press and Hold

Press: Press a key and work immediately;

Press and Hold: Press a key and hold it at least 2s

4、 Play music

- **Simple actions**

1.Put earphone plug into earphone outlet;

Power switch On : Press and hold **Play** Key to open the player, then enter Main Menu.

2. Choose “Music” option, and press “MENU” key to enter and press “ **PLAY**” key to play music.

3.Select music: **PREVIOUS:** Previous music;

Next: Next music.

- **Equalizer Mode**

1. When playing music

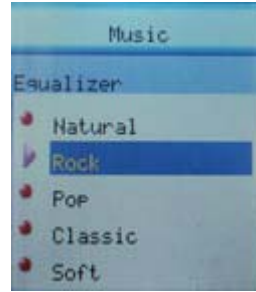
2. Press **Mode** to enter play submenu;

3. Press **Next** choosing Equalizer Mode;

-
4. Press **Mode** to enter 'Equalizer Mode' submenu.



Select an equalizer:



5. Detail of each equalizer (EQ):
Natural, Rock, Pop, Classical, Soft, Jazz, DBB
6. Press **Next** to select an EQ and press **Mode** to confirm.

- **Synchronous Lyric Display**


The player supports lyric files with *.LRC suffix, and displays synchronously.

How to use lyric files?

Please make sure the lyric has the same name to the music, For example:

Music file: Journey.mp3 Lyric file: Journey.lrc

- **How to know if lyric available?**

If lyric matched, a green icon  will be displayed on the left down corner of screen,

1. When marched lyric available:



3. Lyric displays

2. Press and hold **Mode** to enter lyric interface;



4. Press **Mode** return to music mode.

Voice Recording

Please make sure the battery has enough capacity before making record.

Each fold can save up to 99 voice recording files.

- **Recording on “Record mode”**

1. .Enter main menu.

2. Press **Next** scroll to Record mode

3. Press **Mode** to select Record mode, screen will display as below:



4. Press **Play** to start recording.



Voice will be recorded in current fold which set through 'Record stop / Main fold'



If displayed "Memory full", it means no space to save new record files, please delete other files to release memory space.



If "Fold full" shown, it means there are 99 record files in this fold. Please choose another one.



The player only responses to **Play** and **A-B** when record processing

● **Select Record Type**

1. When in the interface of 'Record stop'
2. Press **Mode** to enter record submenu



3. Press next scrolling into 'Rec type' submenu then presses **Mode** to select it.



Fine REC	wav file, fine quality
Long REC	act file, normal quality
Fine VOR	wav file, (Recording controlled by voice, pause when mute)
Long VOR	act file, (Recording controlled by voice, pause when mute)

4. Press **Next** to choose appropriate type and press **Mode** to select it

5. Press **Play** to start recording.

● **Play recorded files**

1. Enter main menu
2. Press **Next** to choose 'VOICE'
3. Press **Mode** to enter playing interface
4. Press **Play** key to start playing the file.
5. Choose voice record files:

PREVIOUS: Select previous file;

Next: Select the next file;



Convert ACT Files into WAV format

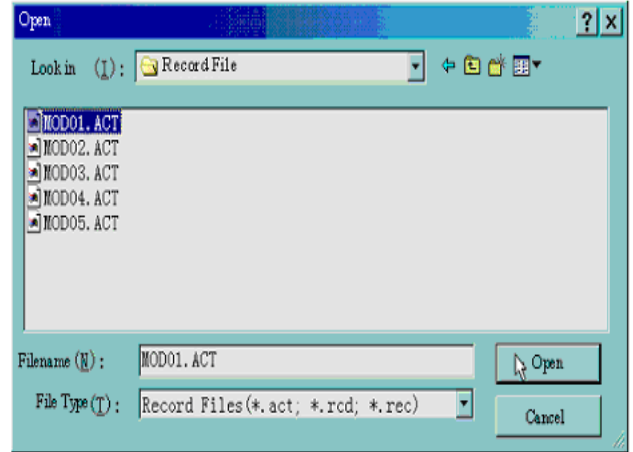
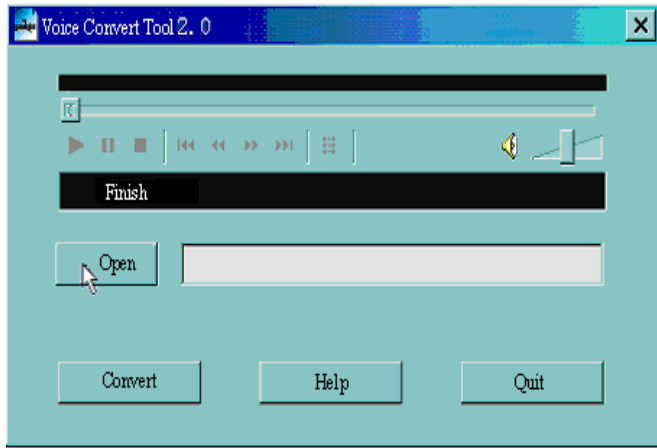
The ACT file which produced by this player can be converted into WAV format by using software provided.

1. Imply "Sound Converter" program.

Click "OPEN" button

2. Select the ACT files you would like

to convert



3. Click 'CONVERT' button, the program will start converting,



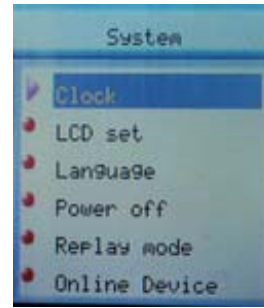
PS: This tool can also play WAV and MP3 files.

Settings

- **Enter Settings**

You can set system performances here, options may vary in different firmware version

1. Enter main menu
2. Press **Next** Scrolling into "SETUP"
3. Press **Mode** to enter.



- **Options introduction:**

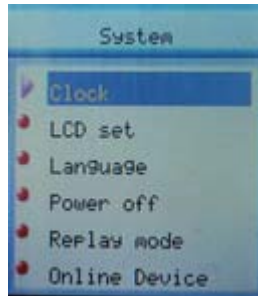
● (Clock)	Setting date and time when saving recorded file
● (LCD set)	Screensaver setting
● (Language)	Choosing different languages
● (Power off)	Setting a count down time in minutes, the player will shut off when time out.
● (Replay mode)	Setting Replay status
● (Online Device)	MTP and USB Disk setting
● (Online Mode)	Connect PC mode
● (Memory info)	Check memory space and usage status

• (DRM Time)	Greenwich Mean Time
• (Firmware version)	Version of player's firmware
• (Firmware upgrade)	Use for upgrade firmware
• (Remove MTPinfo)	Exit MTP mode
• (Exit)	Exit from Setting interface

- **List of menus:**

- 'Clock' Setting

1. System setting interface
2. Press **Mode** to enter 'Clock' interface recording time:

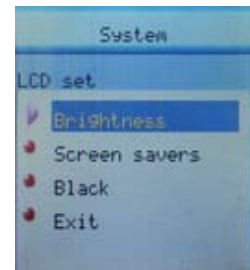


3. Press **VOL** setting from years. While setting, year on twinkling.
4. Press **Next** the value will increase (**PREVIOUS** on opposite)

5. After setting, press **Mode** to exit.

○ “LCD set” Setting

1. Press **Mode** enter “LCD set” .
2. Press **PREVIOUS or Next** for choosing corresponding submenu .
3. press “Mode” key to enter and press “**PREVIOUS or Next**” key to adjust time
4. press **Mode** to exit.



○ Language Setting

This player have 18 display languages: Simplified Chinese, English, Traditional Chinese ect.

1. Press **Mode** to enter ‘Language’ setting
2. Press **PREVIOUS or Next** to choosing and press “Mode” key to enter.
3. press **play** to exit.

○ “Power off” setting

Please note:

You can set time in seconds on ‘Battery saving’ mode, allow the player shut down automatically when player become stop and idle for the period you have set. This function id void if the time set to 0.

You can set time in minutes on ‘Sleep mode’, allow the player shut down automatically when the player become idle (regardless current status) for the period you have set. It is designed for listening

-
- music before sleep. Please note: Sleep mode valid only once after setting, you have to set again if you want to use it next time.
- “Replay mode” Settings
 - Note: in “Manual Mode” you should set repeat point manually.
 - In “Automatic Mode” the player can identify sentence automatically when on A-B repeat. (This function is designed for repeat sentences in language studies.)
 - “Online Device” Settings
 - press “Mode” key to enter and Press **PREVIOUS or Next** to select it and press “Mode” key to confirm
 - “Online Mode” Settings
 - press “Mode” key to enter and Press **PREVIOUS or Next** to select it and press “Mode” key to confirm
 - ‘Memory info’ check
 - You can check total memory space and the percentage of usage.
 - “DRM Time” check
 - press “Mode” key to enter and check
 - ‘Firmware version’
 - You can find the player’s firmware’s version.
 - ‘Firmware upgrade’
 - press “Mode” key to enter. Use for upgrade player’s firmware.
 - ‘Remove MTPinfo’
-

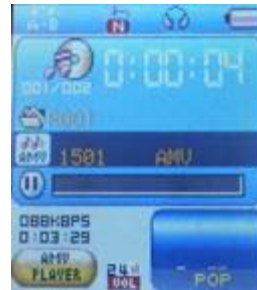
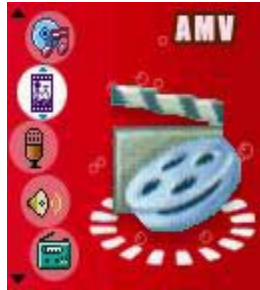
press “Mode” key to enter



Tips: Press Play can exit current menu quickly.

AMV Play

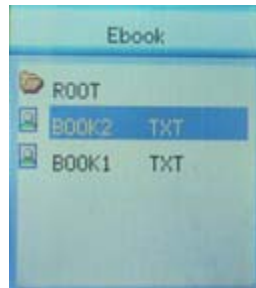
1. Enter main menu, press **Next** scrolling to “AMV”(Only AMV files available):
2. Press **MODE** to enter.



3. Press **PLAY** key to start playing

● Reading files

1. On main menu, press **Next/PREVIOUS** choosing E-BOOK,
2. Press **Mode** to enter corresponding submenu:
3. Press **Next** or **PREVIOUS** choosing the document you want to read, then press **Play** to read it.



● Browsing Pictures

This function is available for JPEG /BMP format.

1. On main menu, press **Next/PREVIOUS** choosing PHOTO.
2. Press **Mode** to enter submenu:
3. Press **Next** or **PREVIOUS** choosing the document you want to read, then press **Play** to play it..



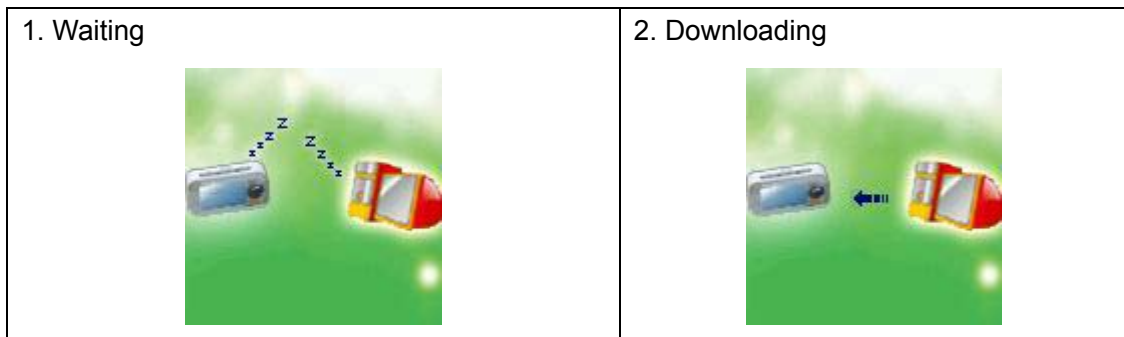
9、 Using USB Disk

The player is also a standard USB disk. Supported by Windows98 (drivers needed), Windows 2K or above (no need for drivers), Mac OS 10.3, Redhead Linux 8.0 or above.

This player supports USB power supply, it can be used without battery. Press Mode at 'Waiting Mode', Can quickly exit to main menu, and you can choose a mode you would like to enter.

This player support suspend mode.

There are three display modes available when connected to 'pc'.



3. Uploading



10、 Enter MTP Media

1. Choose “Setup” option on the main menu.
- 2 .Press “**Next** or **PREVIOUS** ” the select “Online Device”—“Media Device” ,Press “**Mode** ” the confirmation
- 3.Connect PC enter into MTP media player.
- 4.Support DRM 10 songs

Other settings

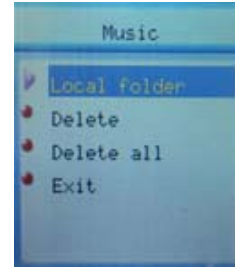
- **Choose other folder (Stop submenu)**

You can classify files into several different folders that ease to manage them (folders should be created on PC). The player can identify 9 folders in root

1. When stopped



2. Press **Mode** to enter Stop submenu



3. Press **Mode** to enter folder choosing interface



4. Press **Next** or **PREVIOUS** to choose a folder



5. Press **Mode** to enter selected folder.

Please note: You can set folders independently in Music / Recorder / Play mode

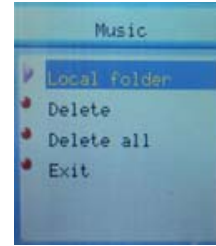
- **Delete file (Stop submenu)**

You delete correspond files.

1. When Stopped.



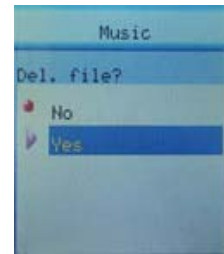
2. Press **Mode** to enter Stop submenu



4. Press **Next** or **PREVIOUS** to choose 'Delete ' or 'Delete all'.



4. Press **Next** to choose 'YES'



5. Press **Mode** to confirm delete.

'Delete all' will delete all files in current folder of current mode. I.e. Choose 'Delete all' in Music mode will delete all music files; recorder files will not be affected.










Please removed player safely and plug USB cable after delete files on PC, otherwise some files will not be removed.

- **Play mode (Play submenu)**

You can choose different play mode (i.e. repeat, shuffle) when playing music or recorded files.

The first option on Play submenu is 'Play mode'

- **REPEAT**

 (Normal)	Playing music files in sequence until the end of folder
 (Repeat One)	Repeat single music file
 (Folder)	Play all music files in folder
 (Repeat Folder)	Repeat all music files in folder
 (Repeat All)	Repeat all music files
 (Random)	Play music files in folder randomly
 (Intro)	Play the 10s of each music files in sequence

-
- **Equalizer mode (Play submenu)**
 1. When playing music
 2. Press **Mode** to enter play submenu
 3. Press **Next** key to choose '**Equalizer**' option
 4. Press **Mode** to enter, Press **PREVIOUS** or **Next** to choose : Normal, Rock, Pop, Classic, Soft, Jazz, DBB
 - **Tempo rate(Play submenu)**


You can choose different play speed and not affect to sound. (Only valid to MP3 files)


 1. While playing music
 2. Press **Mode** to enter play submenu
 3. Press **Next** scrolling to 'Play speed' option
 4. Press **Mode** to enter
 5. Press **Next** for faster, **PREVIOUS** for slower

Note: Play speed will applied to all music file
 - **Replay mode (Play submenu)**
 - **A-B Replay**
 1. When playing music or recording
 2. Press **Mode** to enter play submenu
 3. Press **Next** key to choose '**Replay**' option
 4. Press **Mode** to enter
-

Replay Mode: 'A' of Symbol  flashes, waiting for starter A

5. Press **Next** to select 'A'

'B' of symbol  flashes, waiting ender B

6. Press **Next** to select B. Symbol  fixed and starting repeat between A-B, while playing, you can Press **PREVIOUS** to reset A point.



Press **PREVIOUS** returns to Repeat A-B status. .



Press **Mode** to exit repeat mode upon above three modes.

- **Replay times (Play submenu)**

1. When playing music

2. Press **Mode** to enter play submenu

3. Press **Next** key to choose '**Replay times**' option

4. Press **Mode** to enter, Press **PREVIOUS** or **Next** to adjust times

- **Replay gap(Play submenu)**

1. When playing music

2. Press **Mode** to enter play submenu

3. Press **Next** key to choose '**Replay gap**' option

4. Press **Mode** to enter, Press **PREVIOUS** or **Next** to adjust time.

- **New Function Recommends!**



About Secret Space

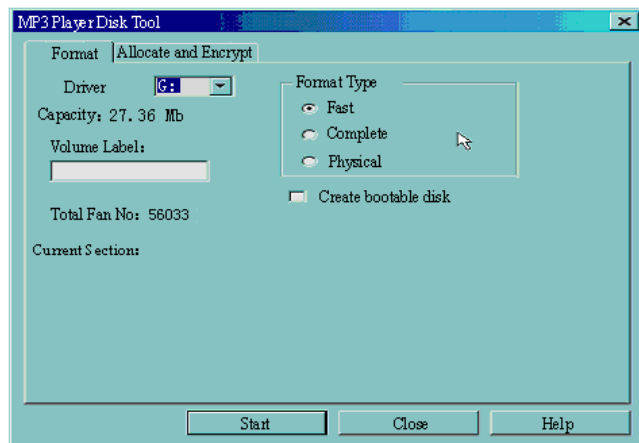
Some MP3 user may worry about divulging secret. They do not want others to find private information contained, therefore these data have to be removed before lend their own MP3 to others. It makes some trouble.

However, this problem has totally solved by 'Secret Space' technique!

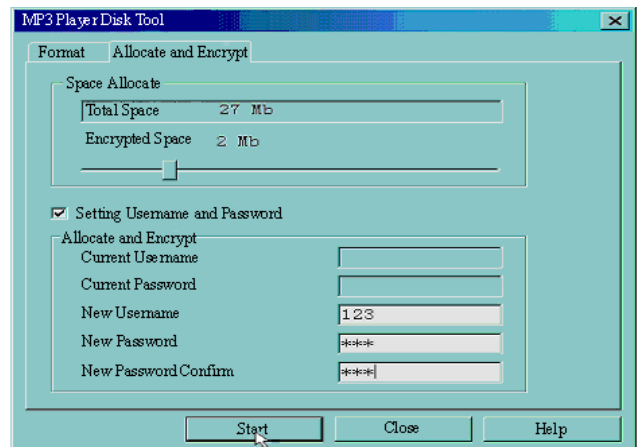
You can use provided software to divide the whole USB disk into two parts, and encrypt one of them. You can move your privacy into the encrypted part; they will be protected by password.

To active 'Secret Space':

1. Connect your player to PC
2. Run *MP3 Player Disk Tool* which can be found in provided CDROM: (Picture 11-1)
3. Click 'Allocation and Encrypt' card, Allocate appropriate space and set username and password, and then click Start. (Picture 11-2)

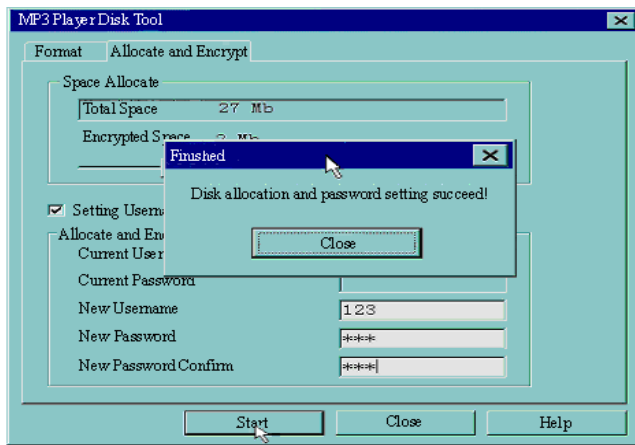


(Picture 11-1)

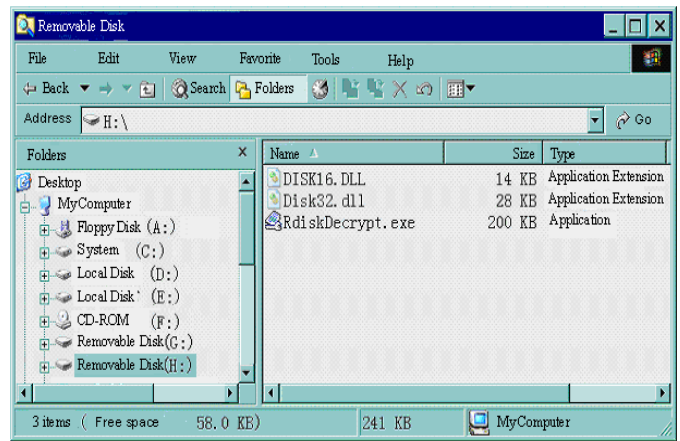


(Picture 11-2)

4. After space allocation, shown as below: (Picture 11-3)
5. Click 'OK' to restart.
6. After restart you will find two disks (only one disk can be seen on Windows 2K SP4 or prior), click the encrypted disk (the second one), you will find three files, two are hidden, one is executable.



(Picture 11-3)

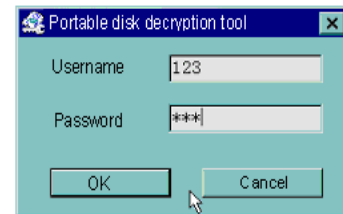


(Picture 11-4)

7. Running executable file 'RdiskDecrypt.exe' and input username and password. If all are correct, disk will be opened, and files can be copied into.
8. You must enter username and password each time access encrypted disk.



Warning: Divide one disk into parts will remove all data, and so does combine process.









Warning: Please remember username and password. If you forget it, you can only making combine processing and you will loss all encrypted data.

Convert Video files into AMV

This program is used to convert video files into AMV format, currently only WMV format is supported.

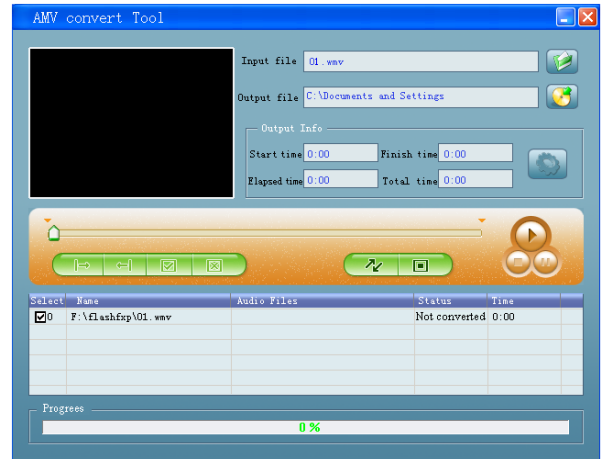
1. Run “AMV Convert Tools”, click  to choose the folder where to save the AMV files, then click  to select the folder where the original files are.

(Picture 12-1)


2. Select unprocessed AMV files, then click , the icon will be highlighted into  and a dialog box will shown. Choosing Pixels of AMV to “128 * 128” and Frames per second to “middle”, then click OK to confirm.

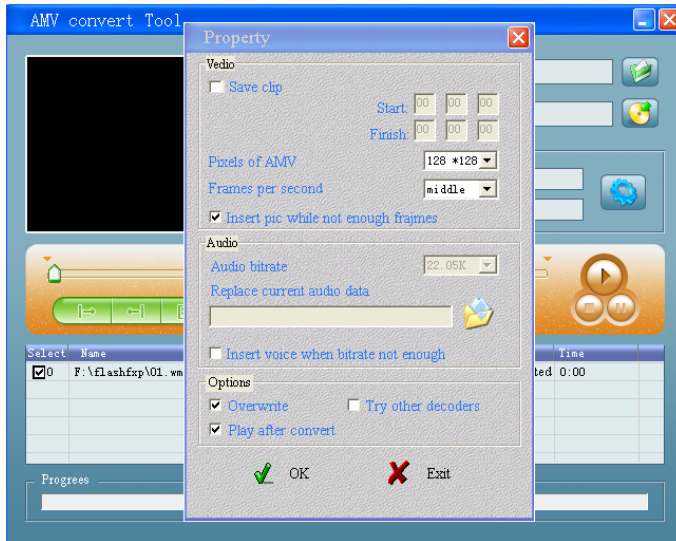
(Note: Only pixels in 128*128 can be supported)

(Picture 12-2)

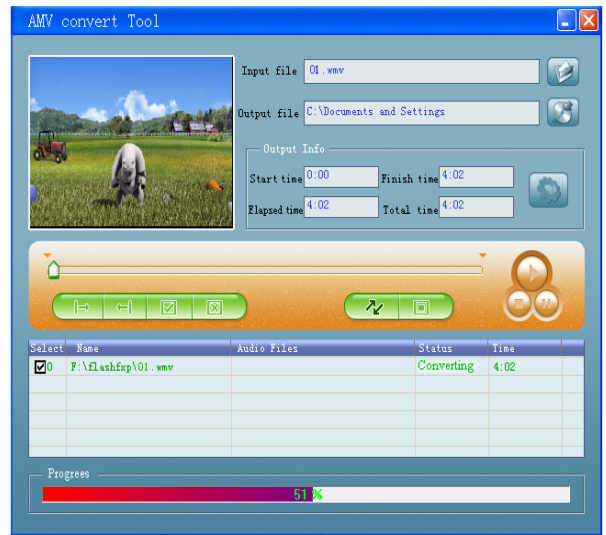


(Picture 12-1)

3 . Click  to start converting. (Picture 12-3)



(Picture 12-2)



(Picture 12-3)

4. After convert, the AMV files will be played automatically.

● Troubleshooting

No Power	Check if battery had installed properly Make sure you have switched the player on
No Sound	Make sure volume is not on 0 position and the connection to earphone is valid Please make sure the earphone is clean Damaged MP3 files may have noise and even cannot be played
Strange characters on display	Make sure you have chose correct language
Cannot Download Music	Check USB cable, and make sure the player is properly connected to the PC Check if the driver has well installed Make there is still blank memory

Technical Specifications

Dimension / Weight	(L)90*(W)41*(H)8.6 / 40g	
Screen	65K full-color 1.5 CSTN screen.	
Connecting to PC	High Speed USB2.0	
Memory	128M – 4GB Flash	
Voice Recorder	Sample rate	8KHz
	Format	WAV (32K bps), ACT (8K bps)
	Time	35hours (ACT, 128M Flash)
MP3、WMA、WMV	Max. Output	(L) 10mW + (R)10mW (32Ohm)
	MP3 Bit rate	8K bps – 320K bps
	WMA、WMV、ASF Bit rate	5K bps – 384K bps
	Freq. Response	20Hz to 20KHz
	SNR	85dB
Supported Formats	Music : MP3, WMA ; Video: AMV ; Voice: wav	
Operate Temperature	-5 to 40 degree	
17 Languages Display	Simp Chinese, English, Trad Chinese, Japanese, Korean, Itanlan etc.	
Supported Systems	Windows98/SE/ME/2K/XP、 Mac OS 10、 Linux 2.4.2	

Please note: Design and characters may change without prior notice.