

SERVICE MANUAL

Chest Freezer

**MODEL: FCM7SUHWW
FCM7DUHWW**



WARNING

This service information is designed for experienced repair technicians only and is not designed for use by the general public. It does not contain warnings and cautions to advise non-technical individuals of potential dangers in attempting to service a product. Product powered by electricity should be serviced or repaired only by experienced professional technicians. Any attempt to service or repair the product or products dealt with in this service information by anyone else could result in serious injury or death.

2013(HAIER ELECTRICAL APPLIANCES COR. LTD)

©All right reserved. Unauthorized copying and distribution is a violation of law.

Issue	2013-09-26
REV	Ref1309S003V0

Contents

Chapter 1 General Information	3
1-1. General Guidelines.....	3
1-2. Insurance Test.....	3
1-3. How to read this Service Manual.....	4
Chapter 2 Product Feature.....	5
2-1. SPECIFICATIONS.....	5
2-2. External views	7
Chapter 3 Installation, adjustments and maintenance	8
3-1. Installation	8
3-2 Defrosting and Draining.....	8
3-3 Cleaning the Freezer	9
Chapter 4 Disassembly	10
4-1. Door assembly (Door, hinge, hinge cover)	10
4-2. Compartment Grill assembly	10
4-3. Control panel assembly (Panel, cover board, knob, indicator light).....	11
4-4. Thermostat assembly	11
Chapter 5 Control and display system	12
5-1. Control panel.....	12
5-2. Starting the Freezer.....	12
Chapter 6 System flow principle	13
6-1. Refrigeration flow chart.....	13
6-2. Refrigeration flow scenograph.....	14
Chapter 7 Circuit diagram.....	15
7-1. Brief principle diagram.....	15
Chapter 8 Trouble shooting	16
8-1. Normal phenomena.....	16
8-2. Abnormal phenomena	18

Issue	2013-09-26
REV	Ref1309S003V0

Chapter 1 General Information

1-1. General Guidelines

When servicing, observe the original lead dress. If a short circuit is found, replace all parts which have been overheated or damaged by the short circuit. After servicing, see to it that all the protective devices such as insulation barriers, insulation papers shields are properly installed. After servicing, make the following leakage current checks to prevent the customer from being exposed to shock hazards.

- 1) Leakage Current Cold Check
- 2) Leakage Current Hot Check
- 3) Prevention of Electro Static Discharge (ESD) to Electrostatic Sensitive

1-2. Insurance Test

1. Check if there is any leak of current.
2. Cut out the power supply before the repair to avoid an electrical shock hazard.
3. In the case of a live-line test, insulating gloves should be worn to avoid potential electrical shock.
4. Confirm the rated current, voltage and capacity before testing with any kinds of instruments.
5. Watch if the upper door is open when you check something at a lower position.
6. Take out every part in the cabinet before moving the machine, especially things like panels (e.g. glass shelf).
7. Please wear intact cotton gloves when repair any parts of the evaporator, so that scratches by the sharp fins can be avoided.
8. If there is a breakdown with the refrigeration system, please surrender the machine to the service center, else the leaked refrigerant may pollute the atmosphere.
9. The refrigerator use AC of 115V with a frequency of 60Hz.
10. A big fluctuation of voltage may cause a start failure of the refrigerator, a burn-out of the control panel and compressor, or an abnormal sound from the compressor in operation.
11. Take care not to damage the supply line. Don't yank at the line; pull the plug out gently from the receptacle. Don't press the line under the cabinet or step on it. Take care not to roll on or damage the

Issue	2013-09-26
REV	Ref1309S003V0

supply line when moves the machine from the wall.

12. In the case of leakage of inflammable gases like carbon monoxide, open the door and windows.

Don't pull out or insert the plugs of the appliance.

13. Don't touch the refrigeration surface of the freezing compartment when the refrigerator is in operation, especially when your hand is wet, else you may be glued to the surface.


14. Pull out the plug of power supply during clearance or power outage. Wait at least five minutes to resume the power supply in order to prevent damage to the compressor caused by continuous restart.

Photo used in this manual

The illustration and photos used in this Manual may not base on the final design of products, which may differ from your products in some way.

1-3. How to read this Service Manual

Icons are used to attract the attention of the reader to specific information. The meaning of each icon is described in the table below:

Note: 

A "note" provides information that is not indispensable, but may nevertheless be valuable to the reader, such as tips and tricks.

Caution: 

A "caution" is used when there is danger that the reader, through incorrect manipulation, may damage equipment, lose data, get an unexpected result or has to restart (part of) a procedure.

Warning: 



A "warning" is used when there is danger of personal injury.

Reference: 

A "reference" guides the reader to other places in this binder or in this manual, where he/she will find additional information on a specific topic.

Chapter 2 Product Feature

2-1. SPECIFICATIONS

1	Model	FCM7SUHWW	FCM7DUHWW
	Photo		
	Commercial brand	GE	GE
	Product description	Chest Freezer	Chest Freezer
2	Capacity		
	Total Volume (cu. ft.)	7	7
3	Features		
	Manual Defrost	Yes	Yes
	Adjustable Temperature Control	Yes	Yes
	Kind of coolant	R134a	R134a
	Foaming components	C-P	C-P
	Wrap-Around Condenser	Yes	Yes
	Wrap-Around Evaporator	Yes	Yes
	Defrost Water Drain	Yes	Yes
	Power "On" Light	Yes	Yes
	Lock	no	yes
	Slide out Storage Baskets	2	2
	Slide out Storage Baskets Material	Wire	Wire
	Second Level Rail	n/a	n/a
	Divider	no	yes
4	Economical/Quiet		
	Insulation (cabinet foam, lid packed)	Yes	Yes
	Cabinet Liner	Textured Aluminum	Textured Aluminum
5	Appearance		
	Color Available	White	White
	Handle	Rec	Rec
6	Weights & Dimensions		
	Height (in.) A	33 1/4	33 1/4
	Width (in.) C	37	37

SERVICE MANUAL

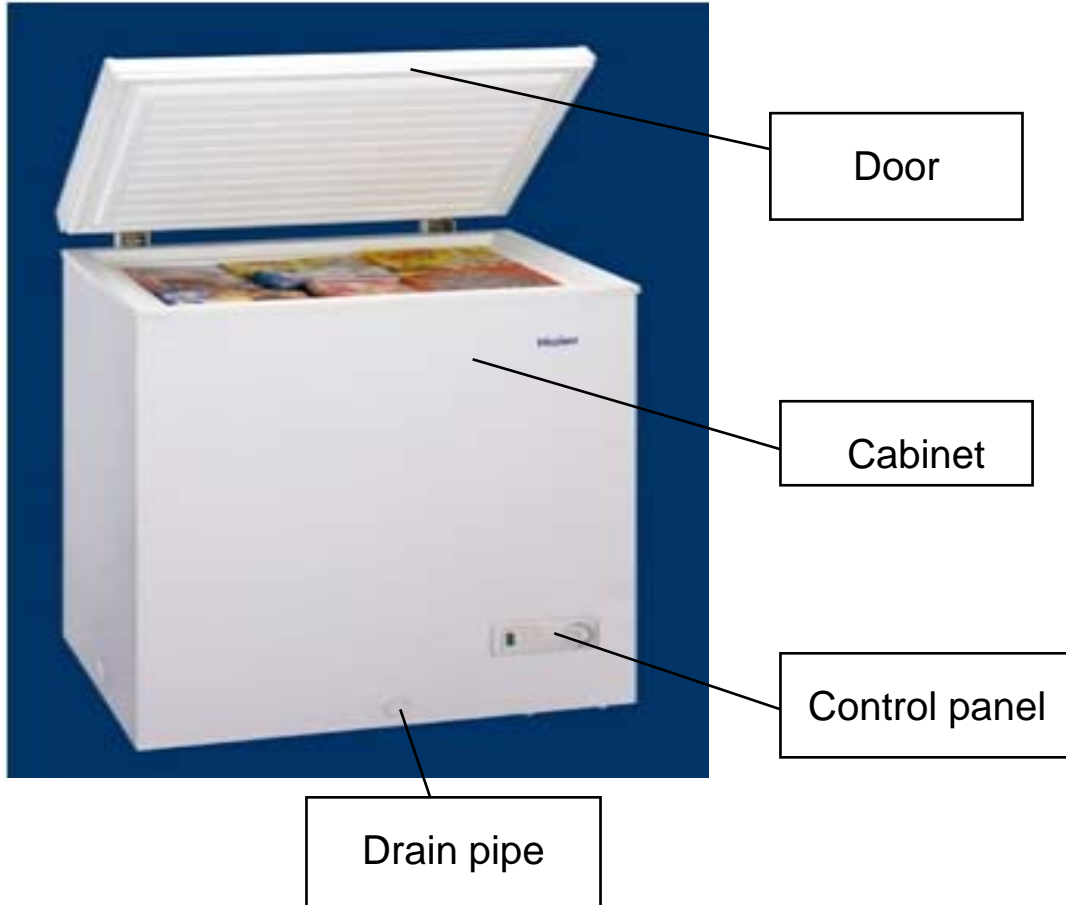
Model: FCM7SUHWW/FCM7DUHWW

Issue	2013-09-26
REV	Ref1309S003V0

6

	Depth (in.) D	21-5/8	21-5/8
	Product Weight (lbs.)	84	84
	Air Clearances Each Side (in.)	3	3
	Air Clearances Back (in.)	3	3
	Approximate Shipping Weight(lbs)	90	90
	Carton Graphics	Kraft	Kraft
7	Energy		
	Voltage/Frequency	115V/60Hz	115V/60Hz
	Amps	1.7A	1.7A
	Max Energy Usage (kwh/yr)	277	277
8	Service		
	User instruction	GB/FR	GB/FR

2-2. External views



Chapter 3 Installation, adjustments and maintenance

3-1. Installation

The freezer should be conveniently located for day-to-day use in a dry well-ventilated room.

Do not install the freezer where the temperature will go below 0°F or above 110°F, because it will not maintain proper temperatures.

Be sure to install the freezer on a floor strong enough to support it when it is fully loaded.

The freezer must be solidly positioned on the floor if it is to function at its best. Shims may be used to accomplish this wherever the floor is too uneven. If the place selected for the freezer is damp or moist, place 2 X 4 s (51 mm X 102 mm) under its entire length to assure adequate support.



If the freezer has been inclined more than 45° position, we need wait 24 hours before restarting the freezer.

3-2 Defrosting and Draining

In most climates, defrosting will be necessary only about twice a year.

To have the freezer operate most efficiently, do not permit more than 1/2" (13 mm) of frost to accumulate on the shelves.

To remove frost, scrape with a plastic or wood spatula or scraper.

Do not use an ice pick or sharp-edged instrument as it may damage or scratch the freezer.



Do not use any electrical device in defrosting the freezer.

For Complete Defrosting

1. Turn the temperature control to the *OFF* position and unplug the freezer.
2. Remove all food and place it in corrugated boxes, insulated bags, picnic coolers, etc. Use towels and newspapers for insulation as needed.
3. With the door/lid open, use pans of hot water to speed loosening of frost. Remove large pieces before they melt.

Chest models have a defrost water drain at the front.

Issue	2013-09-26
REV	Ref1309S003V0

4. Sponge excess water from the bottom of the freezer as it collects to prevent over flowing.
5. After defrosting, clean the inside of the freezer.
6. Replace the drain plug inside the cabinet and the cap on the defrost drain. Fold over and dry the gasket on the hinge side of the lid.
7. Plug in the freezer. Return the temperature control to its previous position and return food to the freezer.



Water may drip from the back flange of the lid cover during defrosting. This is normal. Ice builds up in the lid insulation when the lid is open for adding or removing food, and melts during the defrosting operation.

3-3 Cleaning the Freezer

Outside. Protect the paint finish. The finish on the outside of the freezer is a high quality baked-on paint finish. With proper care, it will stay new-looking and rust-free for years. Apply a coat of appliance polish wax when the freezer is new and then at least twice a year. Appliance polish wax also works well to remove tape residue from freezer surfaces.

Keep the finish clean. Wipe with a clean cloth lightly dampened with appliance polish wax or mild liquid dishwashing detergent. Dry and polish with a clean, soft cloth. Do not wipe the freezer with a soiled dishwashing cloth or wet towel. Do not use scouring pads, powdered cleaners, bleach, or cleaners containing bleach.

Inside. Clean the inside of the freezer at least once a year. We recommend that the freezer be unplugged before cleaning. If this is not practical, wring excess moisture out of sponge or cloth when cleaning in the vicinity of switches, lights or controls.

Use warm water and baking soda solution-about a tablespoon of baking soda to a quart of water. Rinse thoroughly with water and wipe dry. Do not use cleaning powders or other abrasive cleaners. An open box of baking soda in the freezer will absorb stale freezer odors. Change the box every three months.

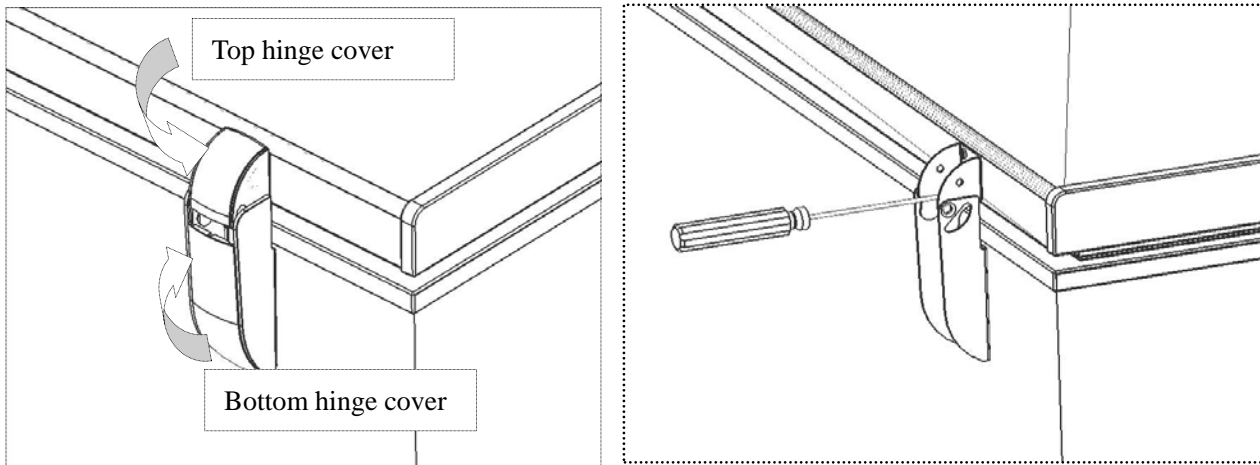


Care should be taken in moving the freezer away from the wall. All types of floor coverings can be damaged particularly cushioned coverings and those with embossed surfaces.

Chapter 4 Disassembly

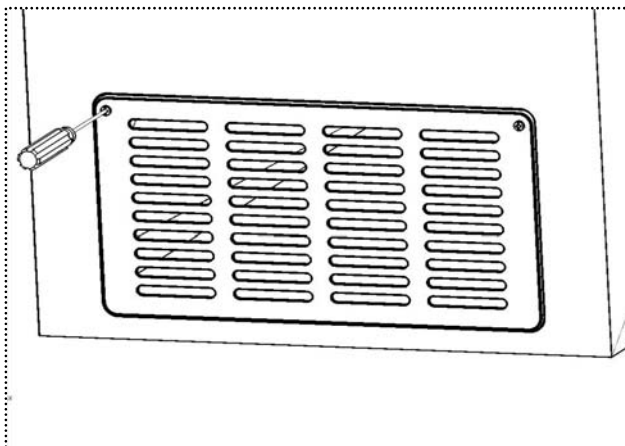
4-1. Door assembly (Door, hinge, hinge cover)

Unscrew the hinge cover screw with screwdriver, take away the top and bottom cover by pull it, and then unscrew the screws on the hinge, so the whole hinge could be moved.



4-2. Compartment Grill assembly

Unscrew the two screw of grill; we can take away the grill.



4-3. Control panel assembly (Panel, cover board, knob, indicator light)

Unscrew the compartment grill (refer 4-2), push the panel claw gently with our finger or tools, at the same time pull panel outside then take away it.

Take away the knob with a sharp-edged tool.

Press the cover board and take it away.

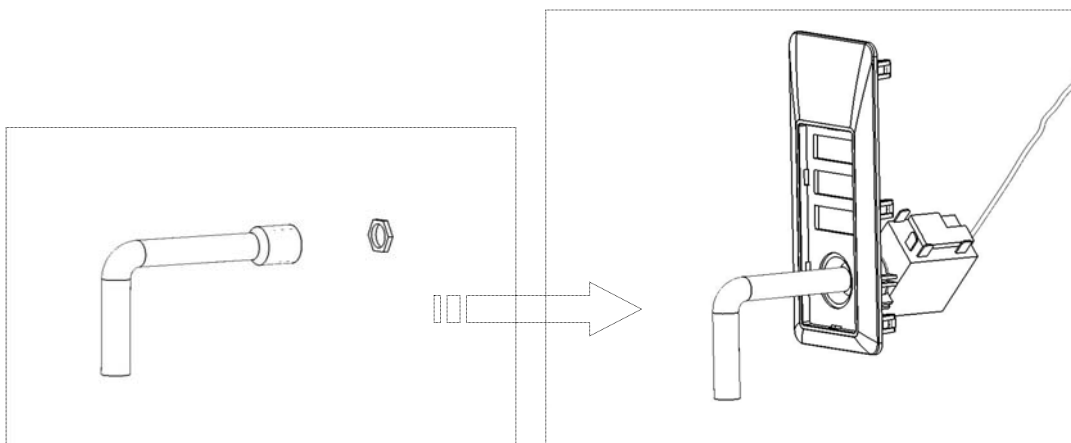
Press two claws on indicator light side and push it from back to front.



4-4. Thermostat assembly

First take off the knob (refer 4-3), Use turnbuckle spanner or acutilingual plier unscrew the turnbuckle, and then thermostat can be moved from back of panel.

Note: When assembly thermostat we should placed thermostat in originally direction.



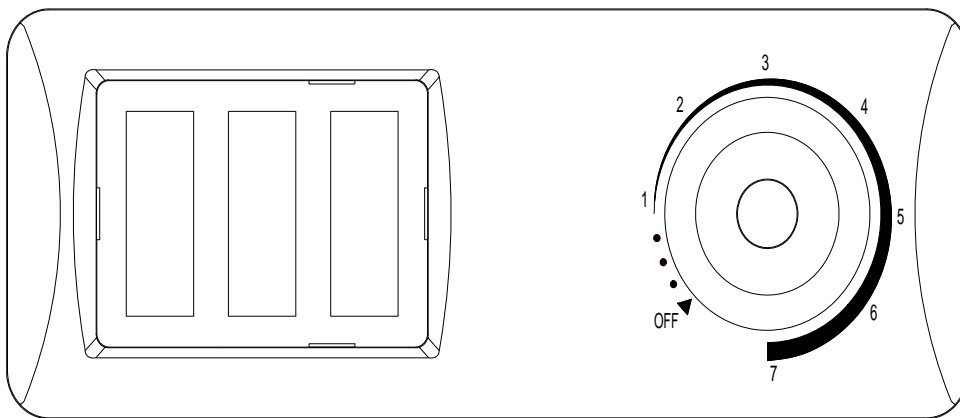
Chapter 5 Control and display system

5-1. Control panel

Freezing temperature selection is made by setting the control from **1** to **7** (coldest).

If we want colder or warmer temperatures, adjust the control one step at a time.

Allow several hours after each one-step adjustment for the freezer temperature to stabilize.



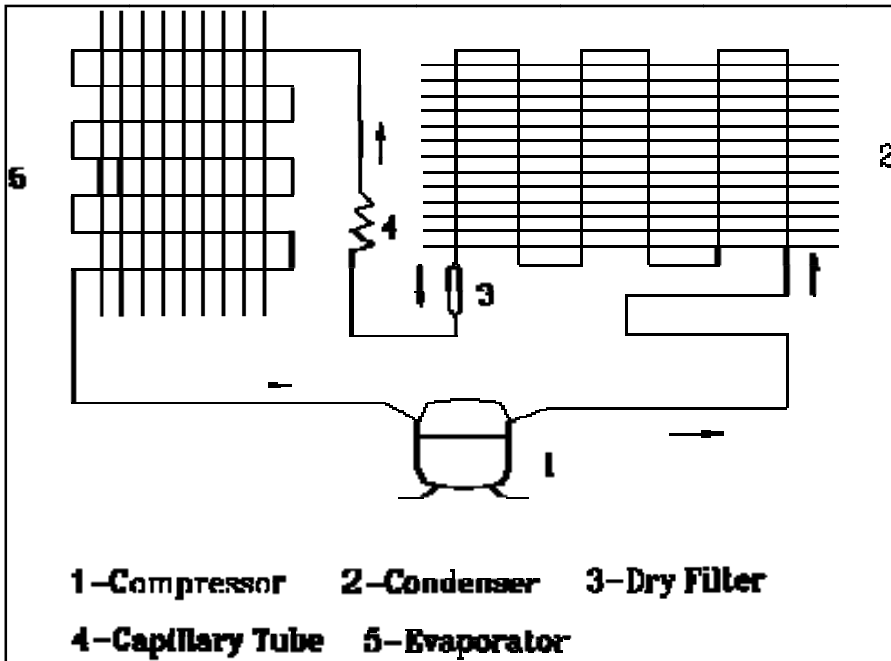
Turning the control to the *OFF* position stops the cooling process but does not shut off power to the freezer.

5-2. Starting the Freezer

1. Clean the inside of the freezer with a mild solution of baking soda and water
2. Connect cord to power outlet.
3. On models with a Temperature Monitor or High-Temp Alarm Switch, set the switch to the *OFF* position.
4. Make sure the temperature control is set at 4.
5. Allow freezer to operate for at least four hours before placing food inside.
6. On models with a Temperature Monitor or High-Temp Alarm Switch, set the switch to the *ON* position.

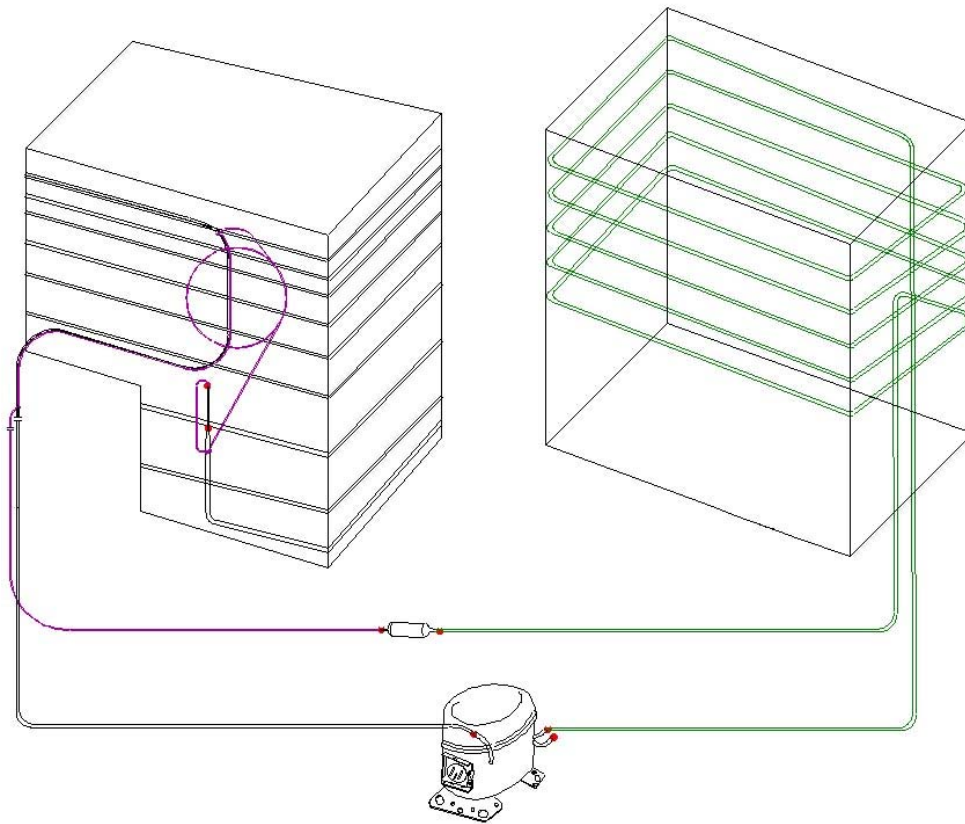
Chapter 6 System flow principle

6-1. Refrigeration flow chart



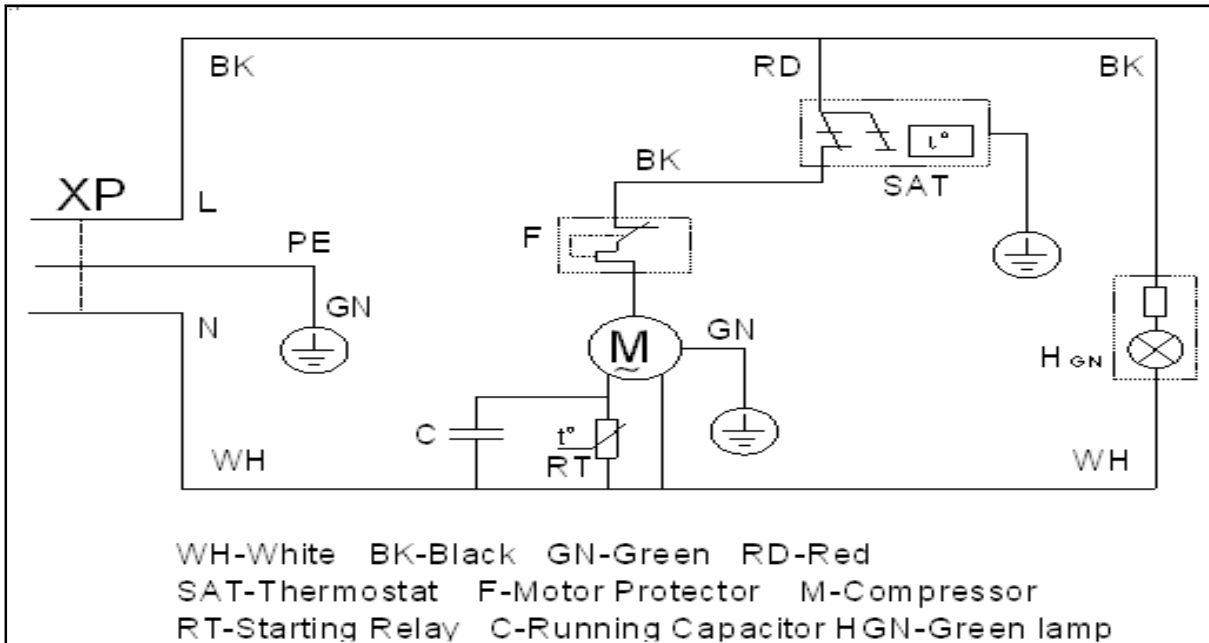
The refrigeration system of direct cooling single-system cooler belongs to the category of a single-temperature and single-control refrigerating system with one evaporators which is controlled by a single temperature control.

6-2. Refrigeration flow scenograph



Chapter 7 Circuit diagram

7-1. Brief principle diagram



Chapter 8 Trouble shooting

8-1. Normal phenomena

<i>Problem</i>	<i>Possible Causes</i>	<i>What To Do</i>
<i>Freezer does not operate or Power-On Light is not on</i>	Temperature control in <i>OFF</i> or <i>Min</i> or <i>0</i> position.	Move the control to a temperature setting.
	Freezer is unplugged.	Push the plug completely into the outlet.
	The fuse is blown/circuit breaker is tripped.	Replace fuse or reset the breaker
<i>Freezer starts/stops too frequently</i>	Door/lid left open.	Check to see if package is holding door/lid open.
	Too frequent or too long to door/lid openings.	
	Temperature control set too cold.	See About the operation of your freezer
<i>Freezer operates too long</i>	Door/lid left open.	Check to see if package is holding door/lid open.
	Too frequent or too long door/lid openings.	
	Temperature control set too cold.	See About the operation of your freezer
	Inadequate air circulation space around cabinet.	See Preparing to install the freezer
	Fast Freeze switch is in the <i>ON</i> position (on some models)	See About the operation of your freezer
<i>Noisy operation or cabinet vibrates</i>	Floor may be weak, causing freezer to vibrate when compressor is on.	Placing 2 X 4s (51 mm X 102 mm) under the length of the freezer will help support it and may reduce vibration.
	Cabinet is not positioned solidly on floor	See Preparing to install the freezer Or use shims for uneven floor
<i>Freezer temperature too warm</i>	Door/lid left open.	Check to see if package is holding door/lid open.
	Too frequent or too long door/lid openings.	

SERVICE MANUAL

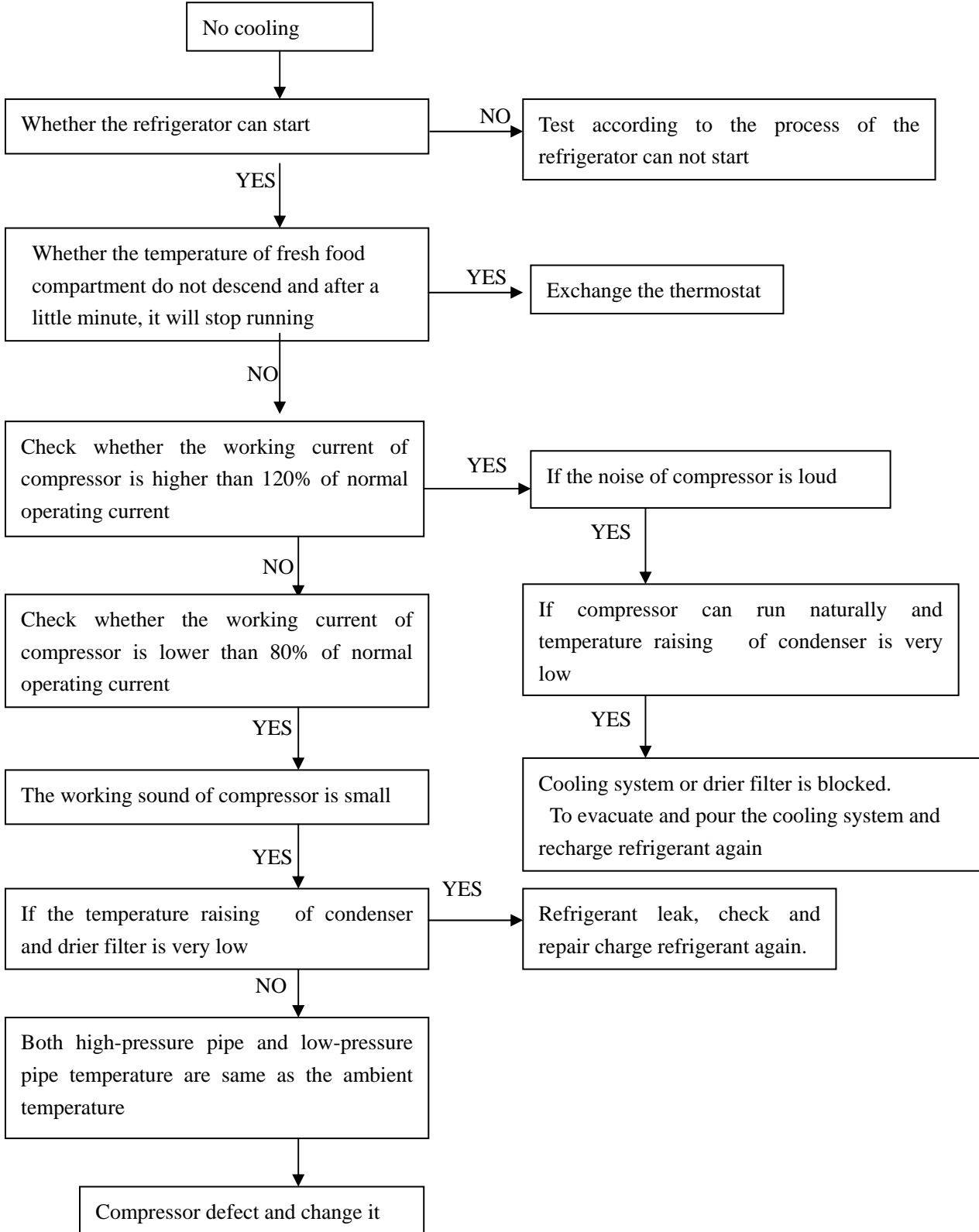
Model: FCM7SUHWW/FCM7DUHWW

Issue	2013-09-26
REV	Ref1309S003V0

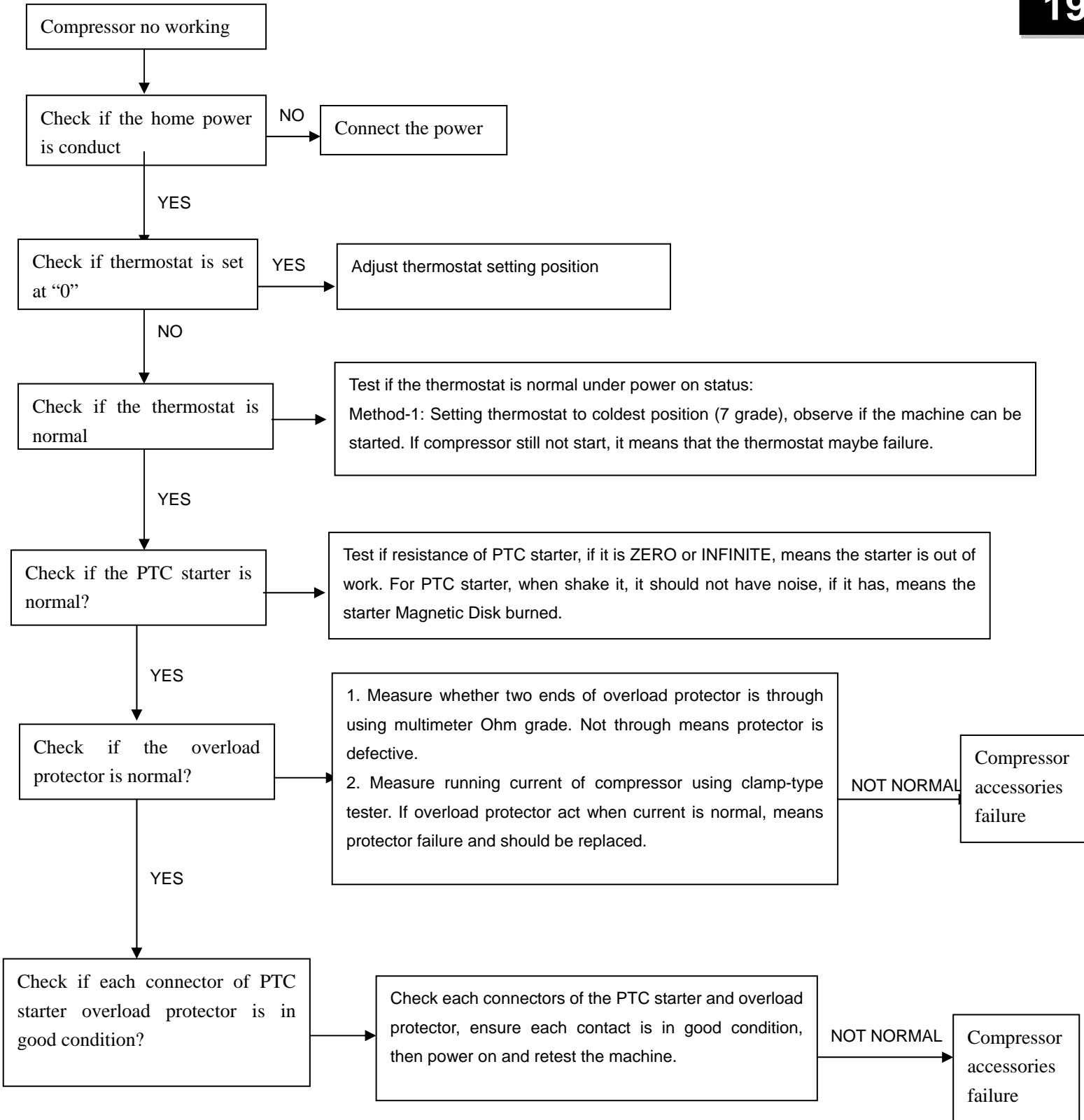
<i>Foods defrosting</i>	Temperature control <i>OFF</i> or <i>Min</i> or <i>0</i> positions.	Move the control to a temperature setting.
	Freezer is unplugged.	Push the plug completely into the outlet.
	The fuse is blown/circuit breaker is tripped.	Replace fuse or reset the breaker
	Door/lid left open.	Check to see if package is holding door/lid open.
	Too frequent or too long door/lid openings.	
<i>Freezer temperature too cold</i>	Temperature control set too cold.	See About the operation of your freezer
	Fast Freeze switch is in the ON position or has run for too long (on some models)	About the operation of your freezer
<i>Moisture forms on outside of cabinet</i>	Not unusual during periods of high humidity	Wipe surface
<i>Interior light does not work (on some models)</i>	No power at outlet.	Replace fuse or reset the breaker
	Freezer is unplugged.	Push the plug completely into the outlet.
	Light bulb burned out.	Replace bulb.
<i>Door/lid wont fully close by itself</i>	Package holding door/lid open.	
<i>Slow starting time after being off</i>	Built-in overload product.	
<i>Excessive frost build-up</i>	Door/lid left open.	Check to see if package is holding door/lid open.
	Too frequent or too long door/lid openings.	
	Not unusual during periods of high humidity	

8-2. Abnormal phenomena

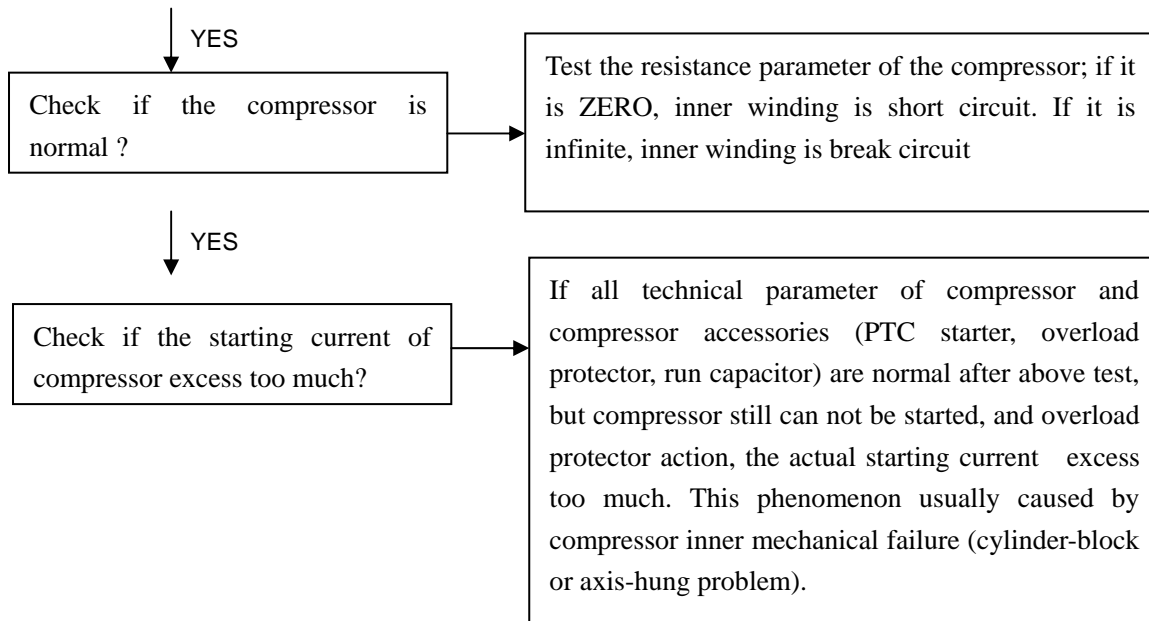
8-2-1. No cooling



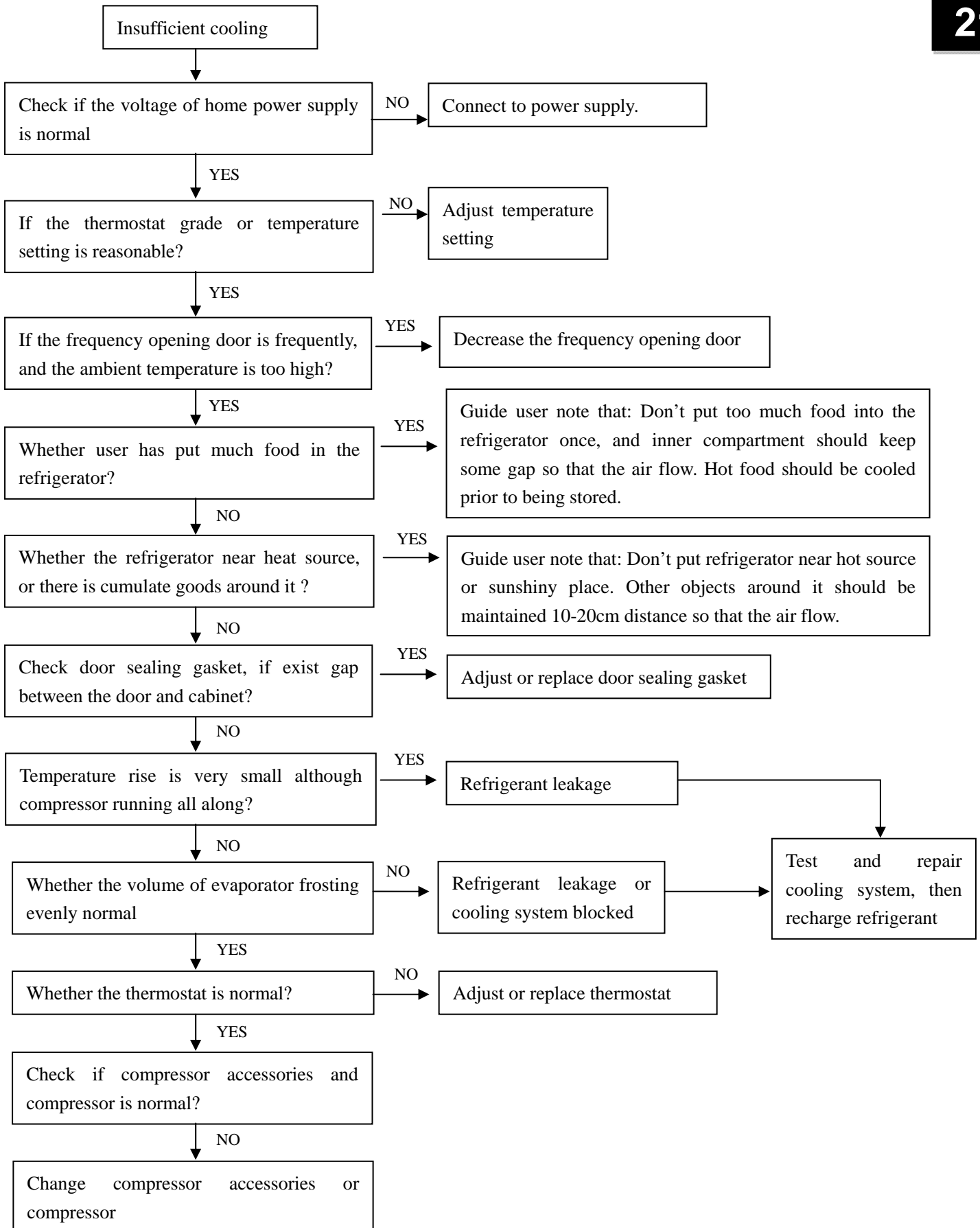
8-2-2.Compressor no start



Issue	2013-09-26
REV	Ref1309S003V0



8-2-3.Poor cooling



8-2-4.Noisy

Exterior factor and solution measure :

1. The adjustable foot is not level.--Explained the ground is uneven, user can use spanner adjust refrigerator food, locates the freezer in the horizontal position
2. The freezer and other goods bump or near to the wall--The user may move the goods which bumps or adjust the distance between freezer and wall (10-20cm)

