

Memorial University of Newfoundland

Residence Wired Connection Installation Manual



Windows

Vista

Last updated: August 2008

Department of Computing and Communications
Memorial University of Newfoundland
St. John's, Newfoundland

Introduction

This document will take you through the process of configuring your personal computer to work with the wired ports in Residence.

Who should use this document?

This document should be used only by MUN students who wish to use wired ports in Residence and have the Windows Vista operating system.

Help

For assistance during the configuration process please contact:

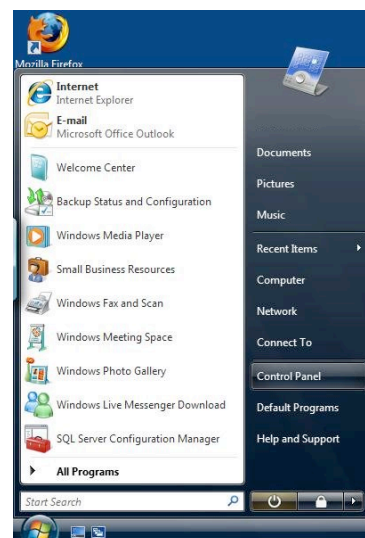
Computing and Communications Help Centre
Phone: 737-4595
E-mail: help@mun.ca
Hours: 8:30am - 5:00pm (fall & winter); 8:30 - 4:30 (summer)

Requirements

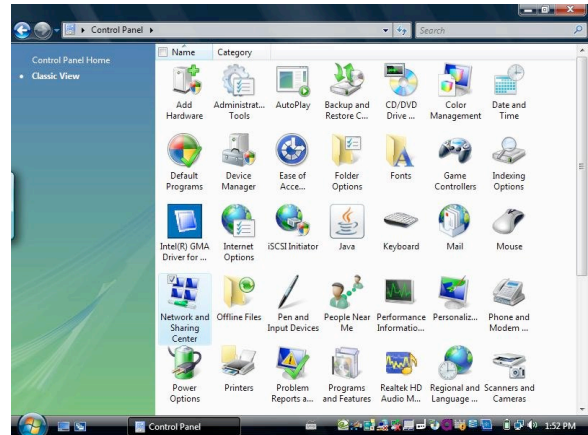
- A computer running Windows Vista Service Pack 1 (SP1).
- A network interface card that supports IEEE 802.1x authentication with the latest drivers installed.
- Your account credentials, which can be generated through the Device Authorization Tool (DAT) at www.mun.ca/cc. These credentials are used for both wired and wireless access on campus, so if you already have a wireless account then you know your user name and password. Remember, you must be a current MUN student to submit the DAT form.

Configuration

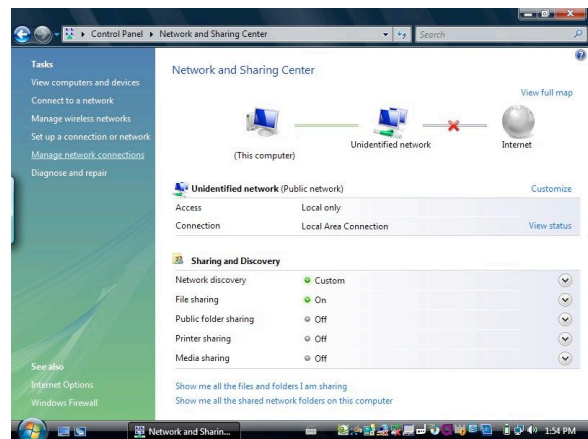
1. Plug in your computer cable to the port in your computer, and connect the other end to the network port on your wall.
2. On your computer click **Start > Control Panel**



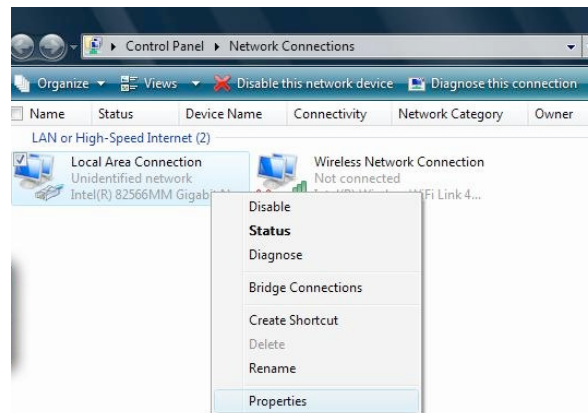
3. In the new window that appears double-click **Network and Sharing Centre**



4. On the left of the screen click **Manage Network Connections**



5. Right click the **Local Area Connection** icon that corresponds to your network interface card and select **Properties**.

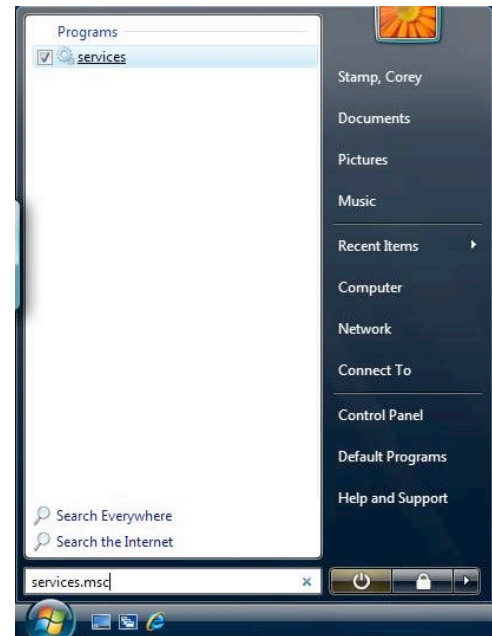


6. Verify that you have the **Authentication** tab – it should be located next to the **Networking** tab. Click the tab if you do have it and jump ahead to Step 11.

If you do not have the **Authentication** tab, move on to Step 7.

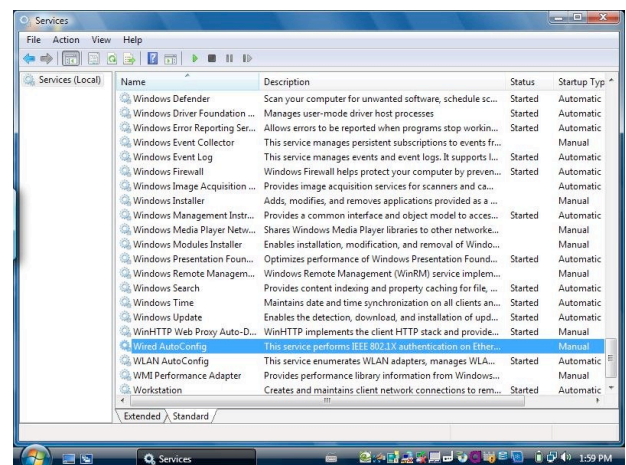
7. Click the **Start** button and in the **Search Box** type **SERVICES.MSC**.

This should return one option called **Services**. Click **Services** to open.



8. In the **Services** window locate the **Wired AutoConfig** service, it should be near the bottom of the list.

Right click **Wired AutoConfig** and select **Properties**.



9. In the new window click the **Startup type**: drop down box and select **Automatic**.



Click **OK** to save the change.

Now close all windows, and restart your computer.

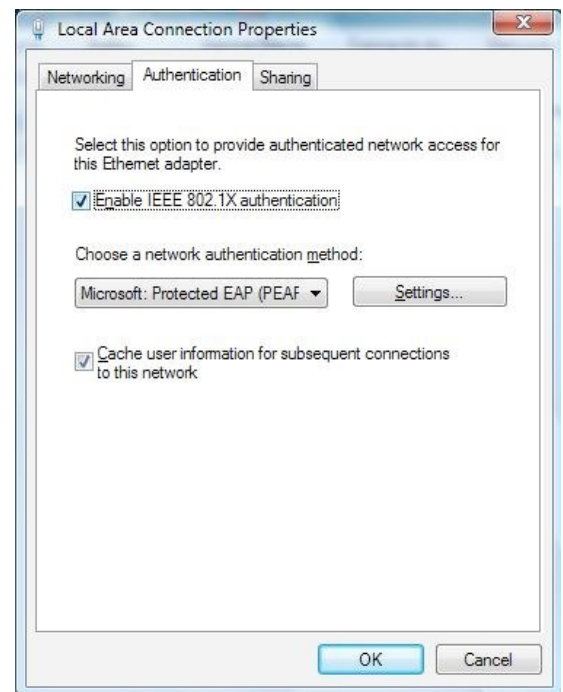
10. When your computer has restarted, return to Step 1 and try the steps again.

If the **Authentication** tab has not appeared after attempting the first 6 steps again, contact the C&C Help Centre or Housing Computer Support for further assistance.

11. On the **Authentication** tab:

- Place a check next to **Enable IEEE 802.1X authentication**
- In the drop down box select **Microsoft: Protected EAP (PEAP)**
- Check the box labeled **Cache user information for subsequent connections to this network** to save your user name and password for automatic login.

If you leave it unchecked you will be prompted for your user name and password each time

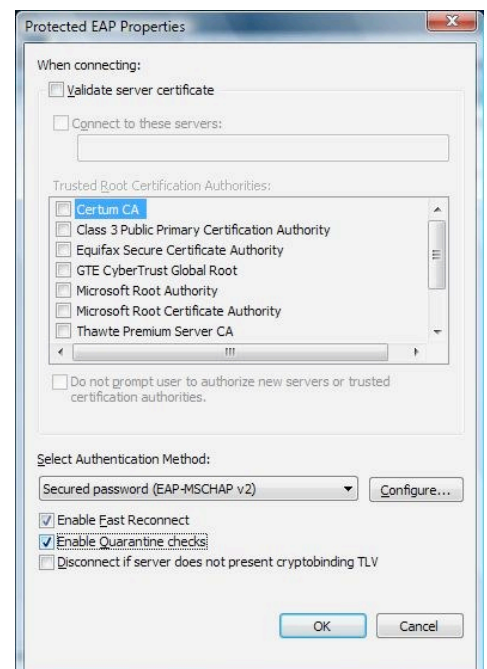


12. Now click the button labeled **Settings...** next to the **Protected EAP (PEAP)** drop down box.

13. On the **Protected EAP Properties** window:

- Uncheck **Validate server certificate**
- Under **Select Authentication Method:** choose **Secured password (EAP-MSCHAP v2)**

14. Click the **Configure** button located next to the **Select Authentication Method** drop down box.



15. Uncheck **Automatically use my Windows logon name and password (and domain if any)**.

Click **OK** to the three windows on your screen.



16. A balloon should now appear prompting you to enter your user name and password. Click this balloon.



17. Enter your **User name**, **Password**, and leave the **Logon domain** text box empty.

Click **OK** to connect

