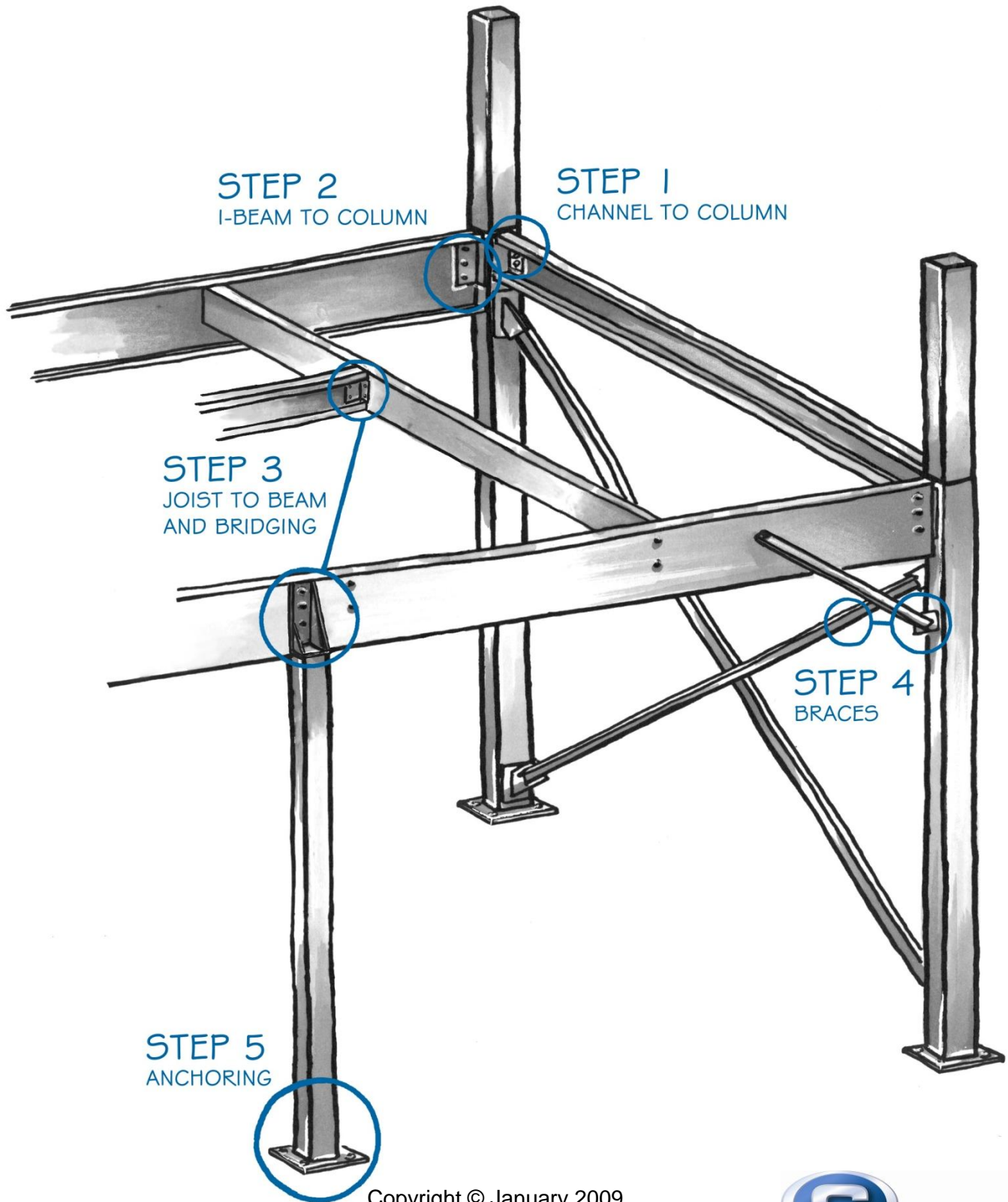


GENERAL STRUCTURE INSTALLATION MANUAL



Copyright © January 2009,

Cogan Wire and Metal Products Ltd. All rights reserved



Cogan®

**FASTER.
LEANER.
BETTER.™**



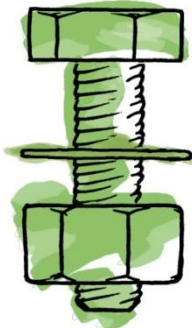
$\varnothing 1/4"$ x 1" HEX
HEAD TEK SCREW



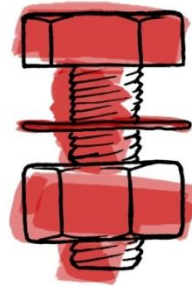
$\varnothing 5/8"$ x 6" BOLT
(ANCHOR)



$\varnothing 5/8"$ x 2 1/4" BOLT



$\varnothing 5/8"$ x 1 3/4" BOLT



$\varnothing 5/8"$ x 1 1/4" BOLT



USE ASTM A325 STRUCTURAL BOLTS ONLY

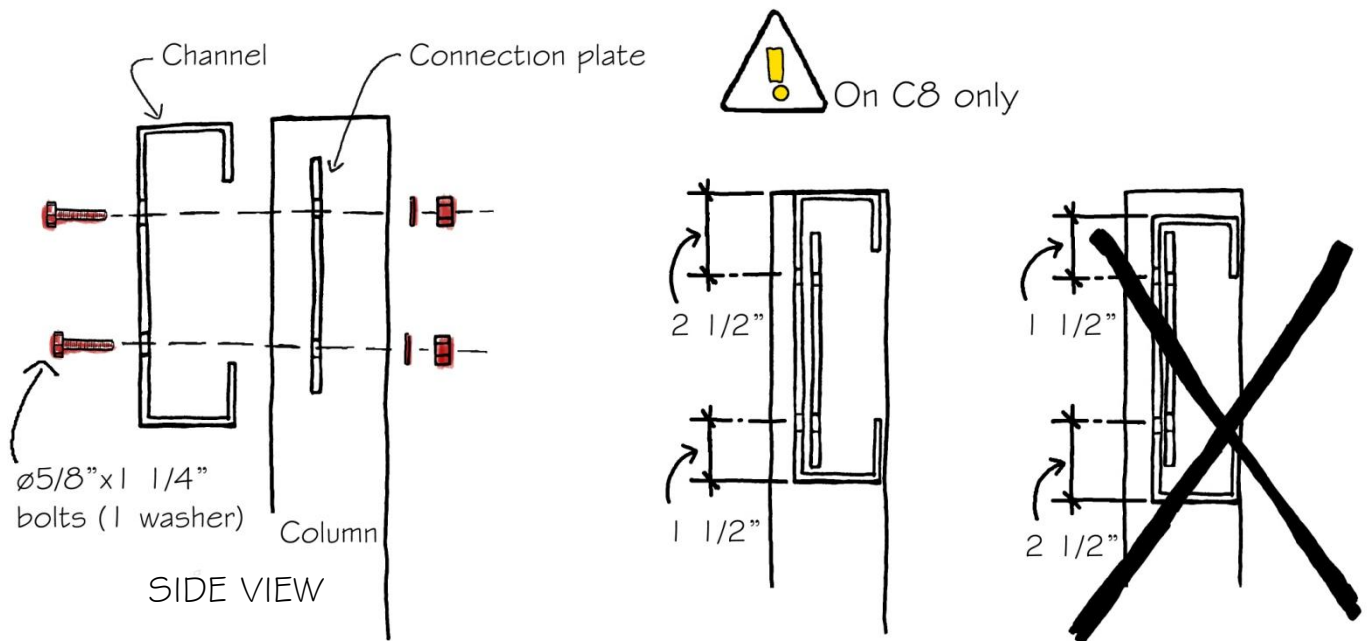
STEP 1

CHANNEL TO COLUMN CONNECTION (SINGLE CHANNEL)

C8 - C10 - C12



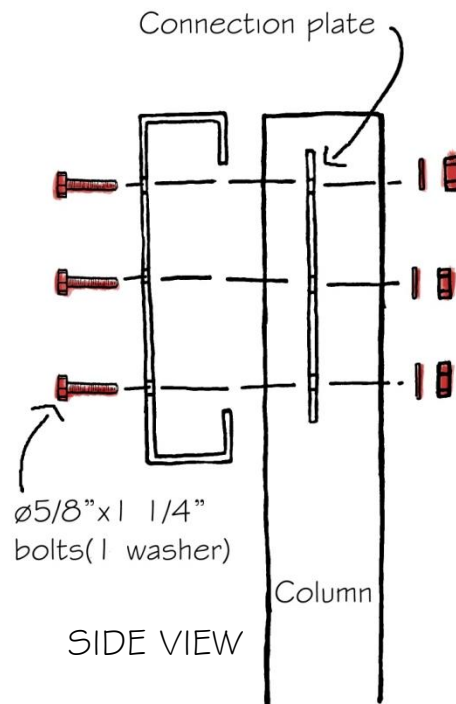
ASSEMBLE ACCORDING TO THE ORIENTATION INDICATED ON THE INSTALLATION PLAN



C14 - C16

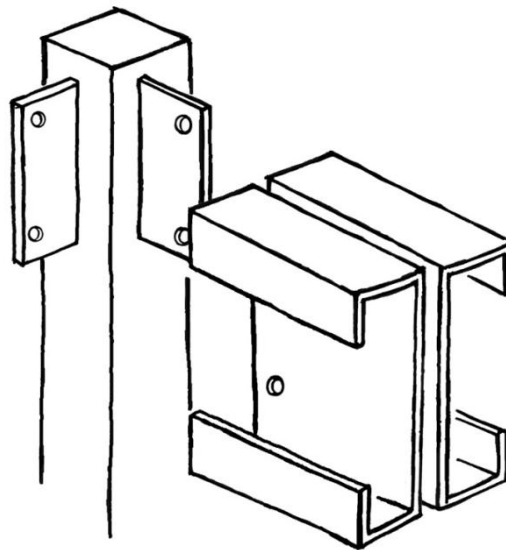
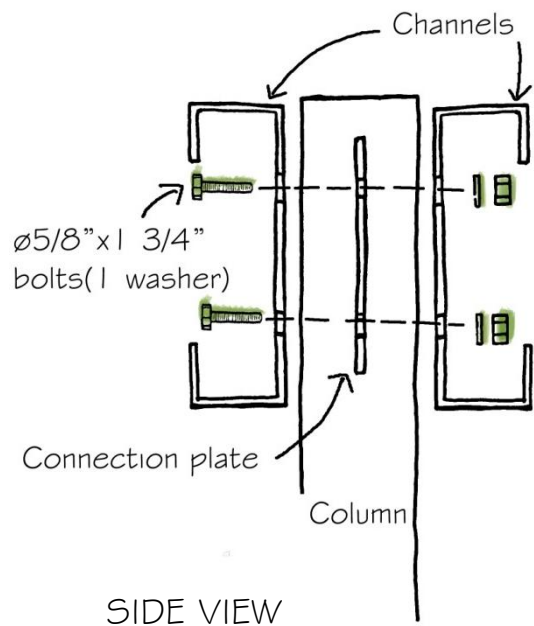


ASSEMBLE ACCORDING TO THE ORIENTATION INDICATED ON THE INSTALLATION PLAN

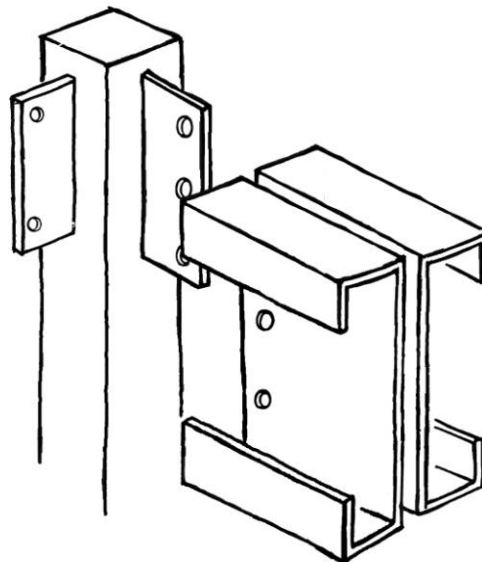
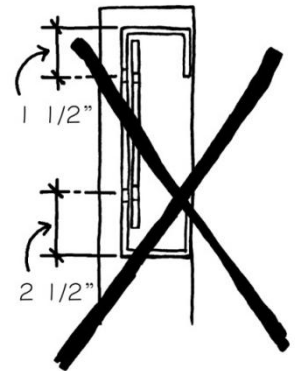
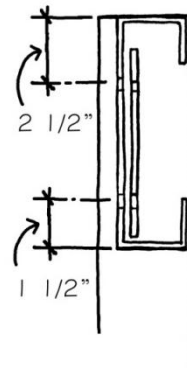
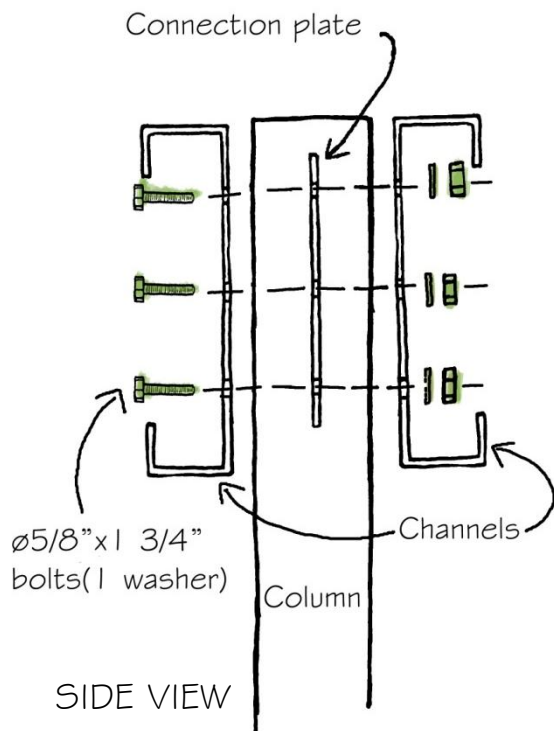


CHANNEL TO COLUMN CONNECTION (BACK TO BACK CHANNEL)

DC8 - DC10 -DC12



DC14 - DC16

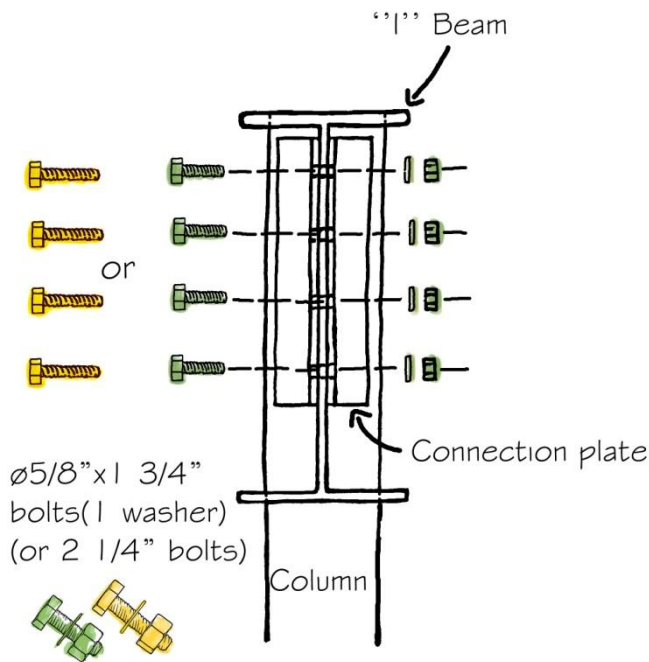


STEP 2

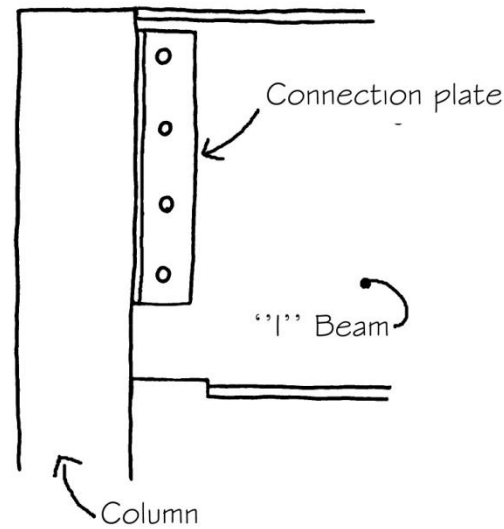
I-BEAM TO COLUMN CONNECTION (DOUBLE CONNECTION ANGLE)



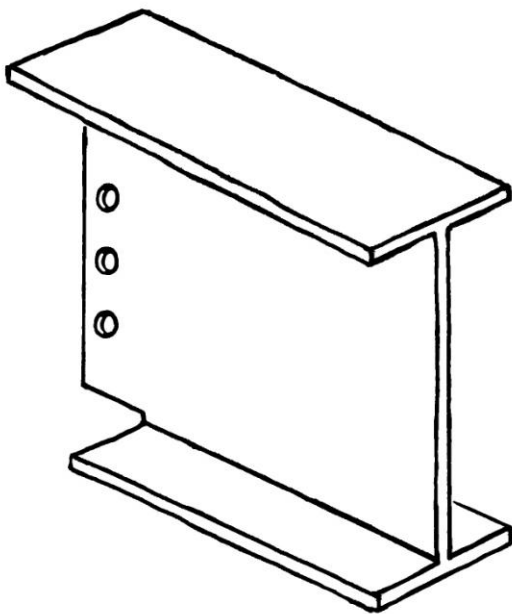
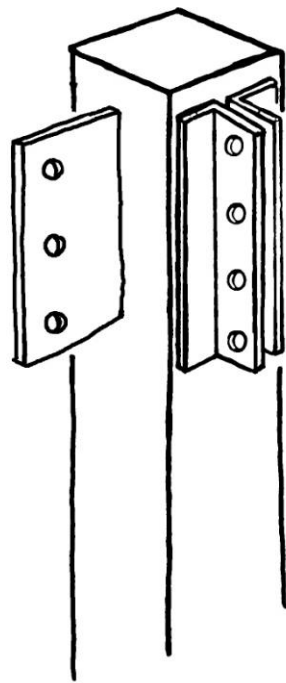
ASSEMBLE ACCORDING TO THE ORIENTATION INDICATED ON THE INSTALLATION PLAN



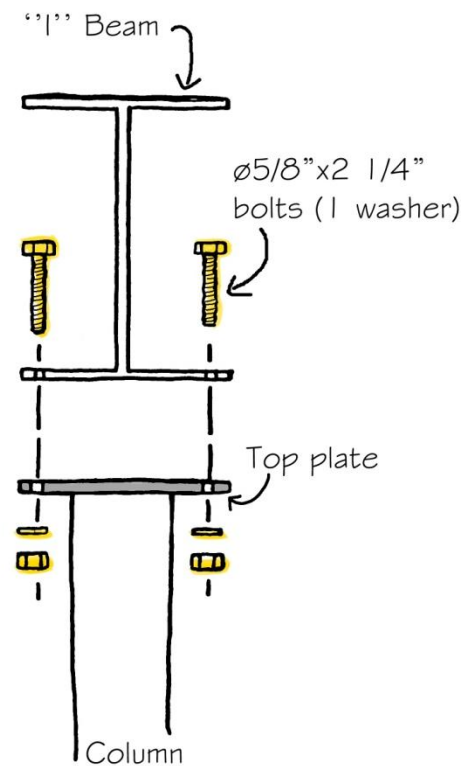
SIDE VIEW



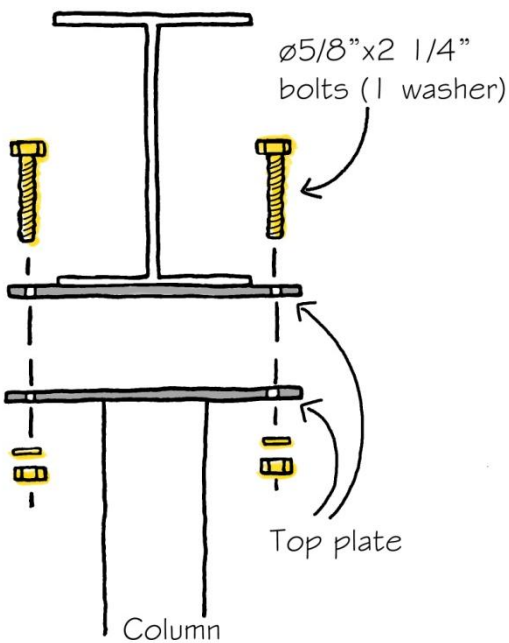
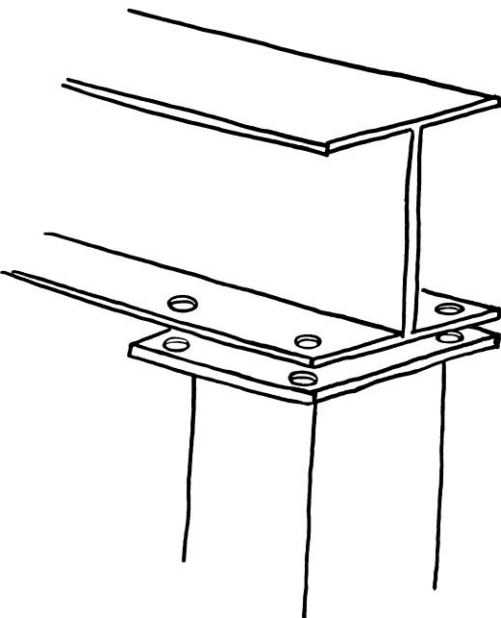
FRONT VIEW



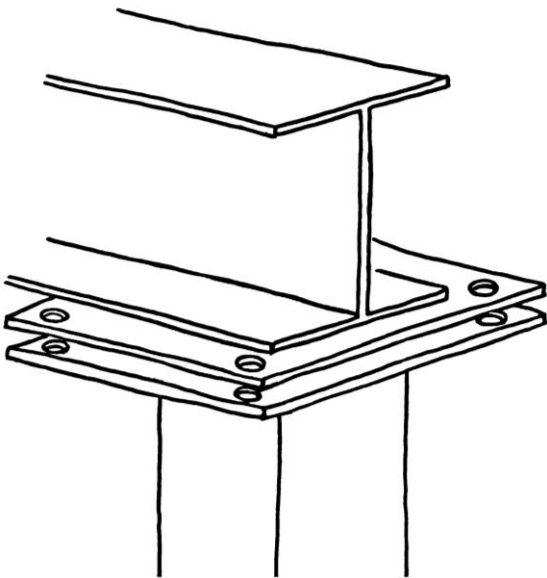
I-BEAM TO COLUMN CONNECTION (MOUNTED TO COLUMN TOP PLATE)



SIDE VIEW



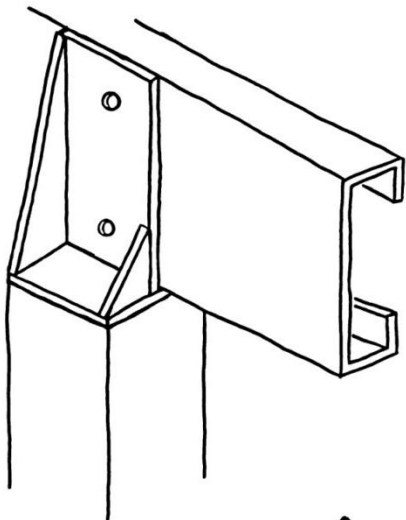
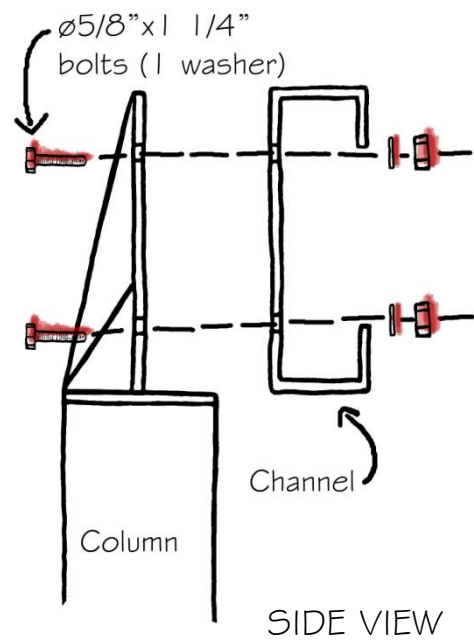
SIDE VIEW



STEP 3

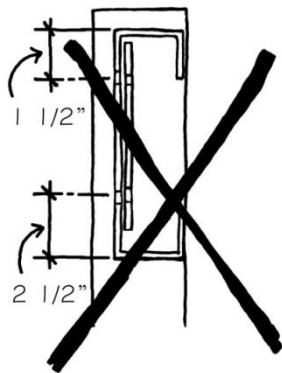
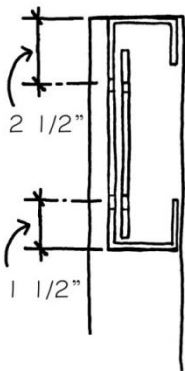
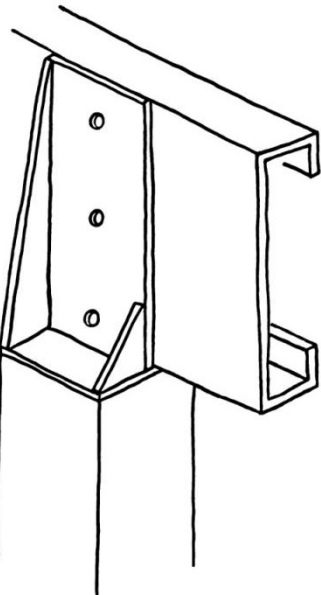
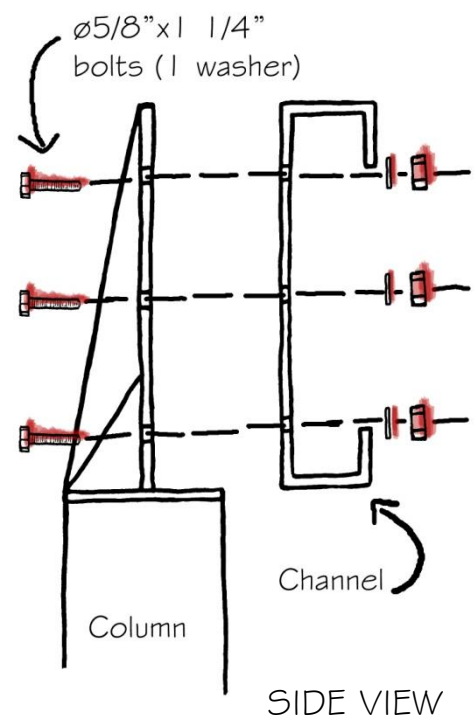
JOIST TO BEAM CONNECTION (CANTILEVER SINGLE CHANNEL ASSEMBLY)

C8 - C10 - C12



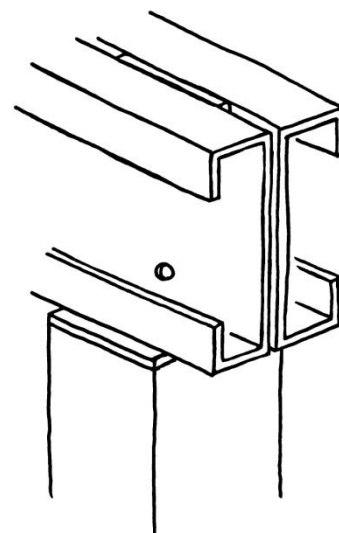
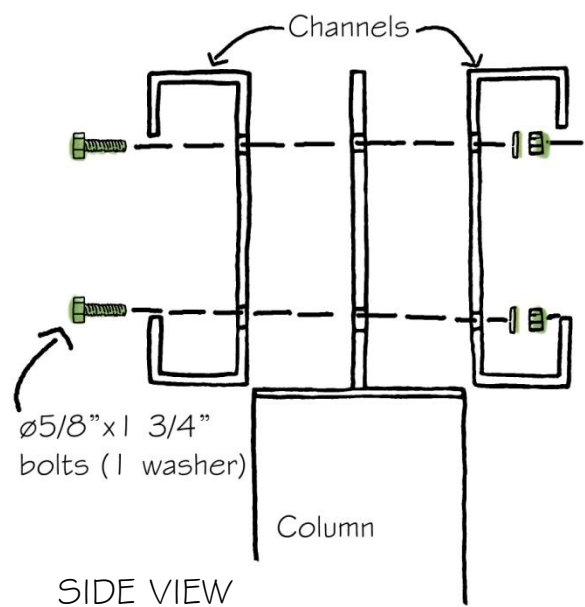
On C8 only

C14 - C16

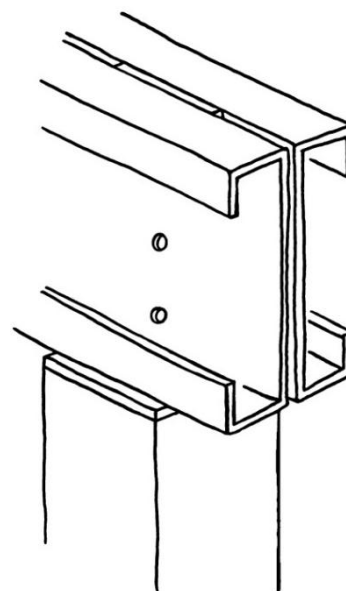
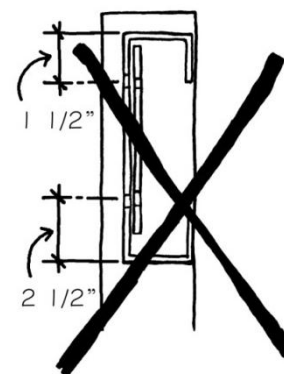
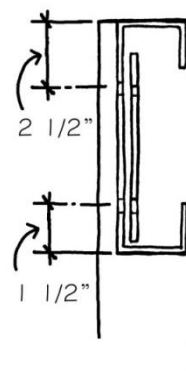
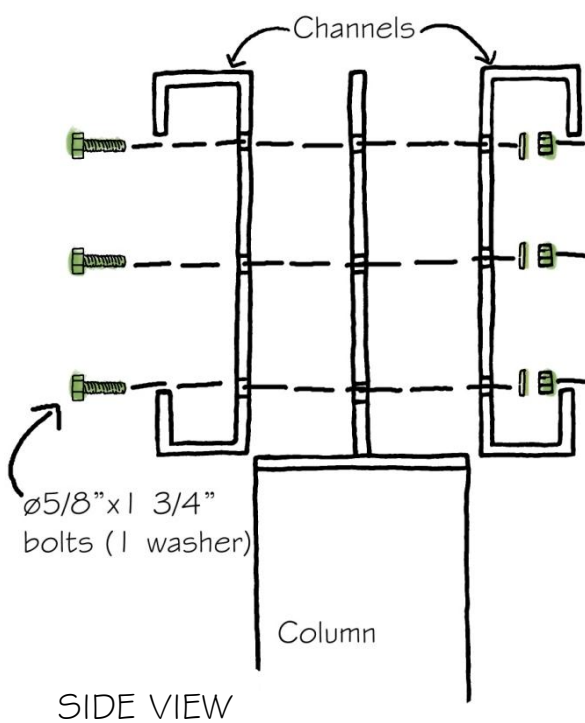


JOIST TO BEAM CONNECTION (CANTILEVER BACK TO BACK CHANNEL ASSEMBLY)

C8 - C10 - C12



C14 - C16



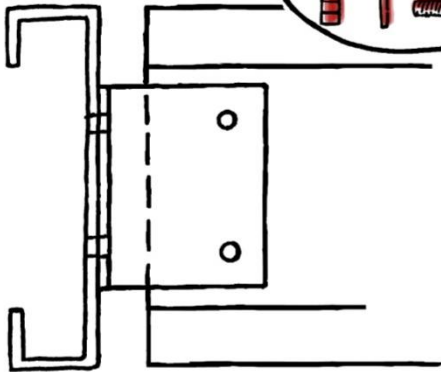
JOIST TO BEAM CONNECTION (CHANNEL TO CHANNEL USING WEB ANGLE)

C8 - C10 - C12



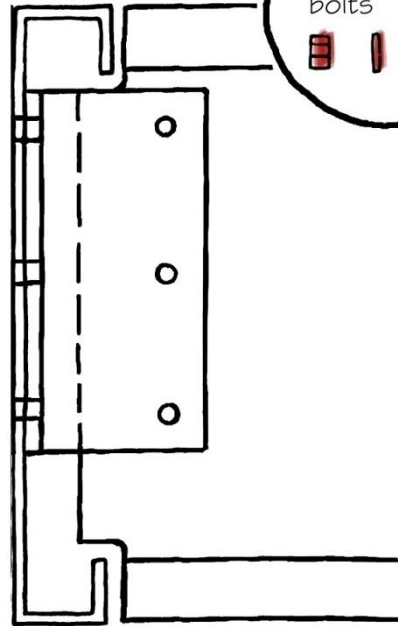
ONE SINGLE CHANNEL TO SINGLE CHANNEL USING WEB ANGLE

$\phi 5/8"$ x $1\ 1/4"$ bolts



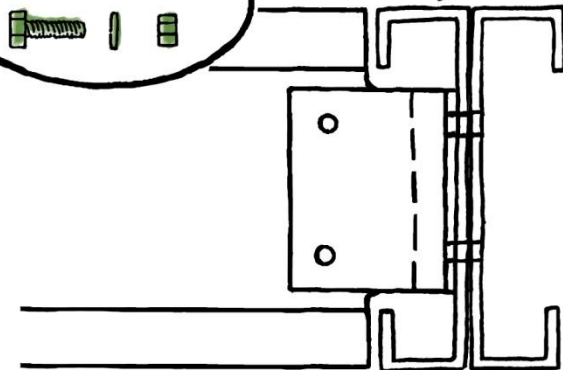
3 BOLTS WHEN USED WITH C14 OR C16

$\phi 5/8"$ x $1\ 1/4"$ bolts

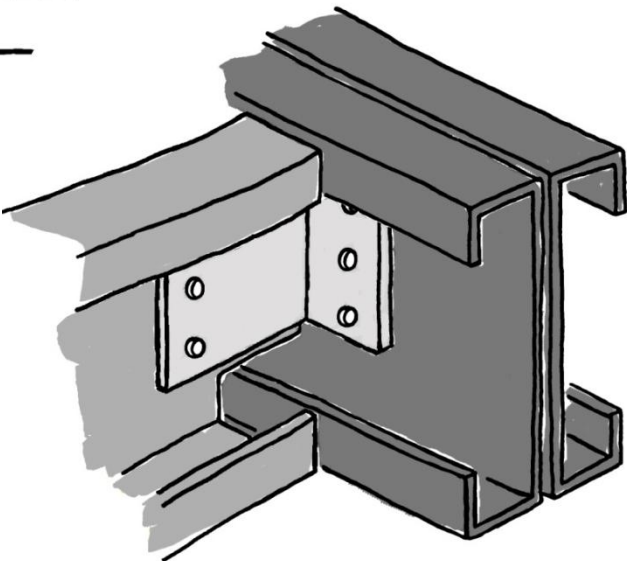
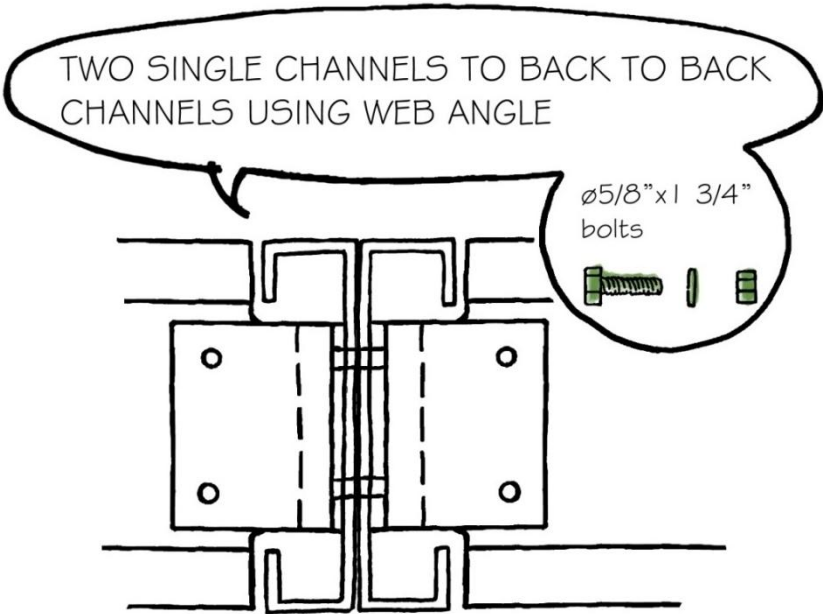
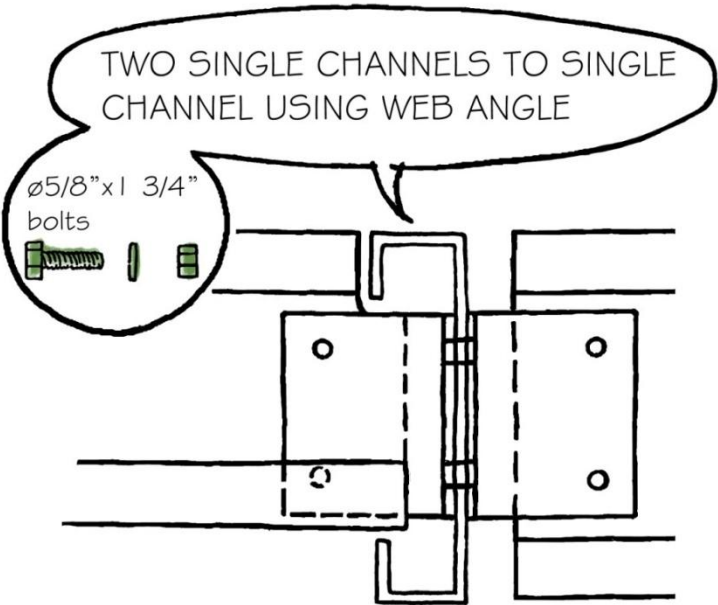


ONE SINGLE CHANNEL TO BACK TO BACK CHANNELS USING WEB ANGLE

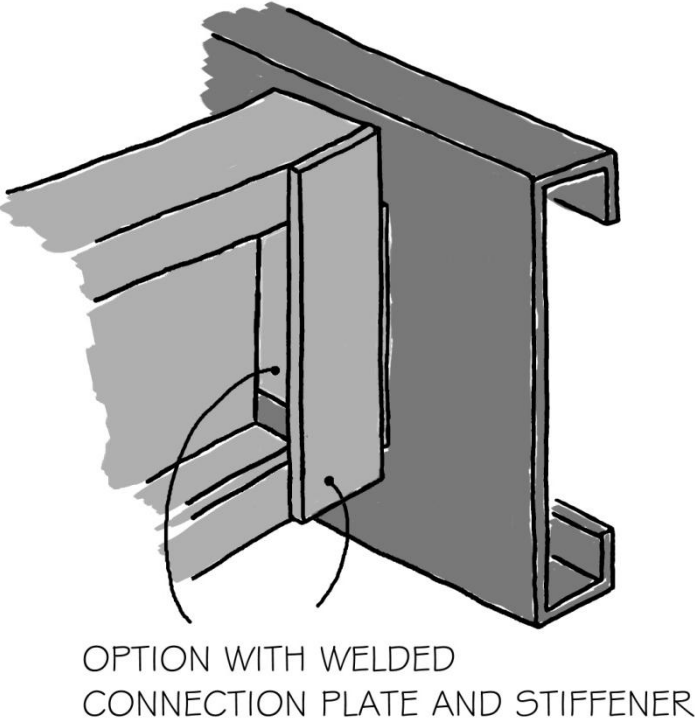
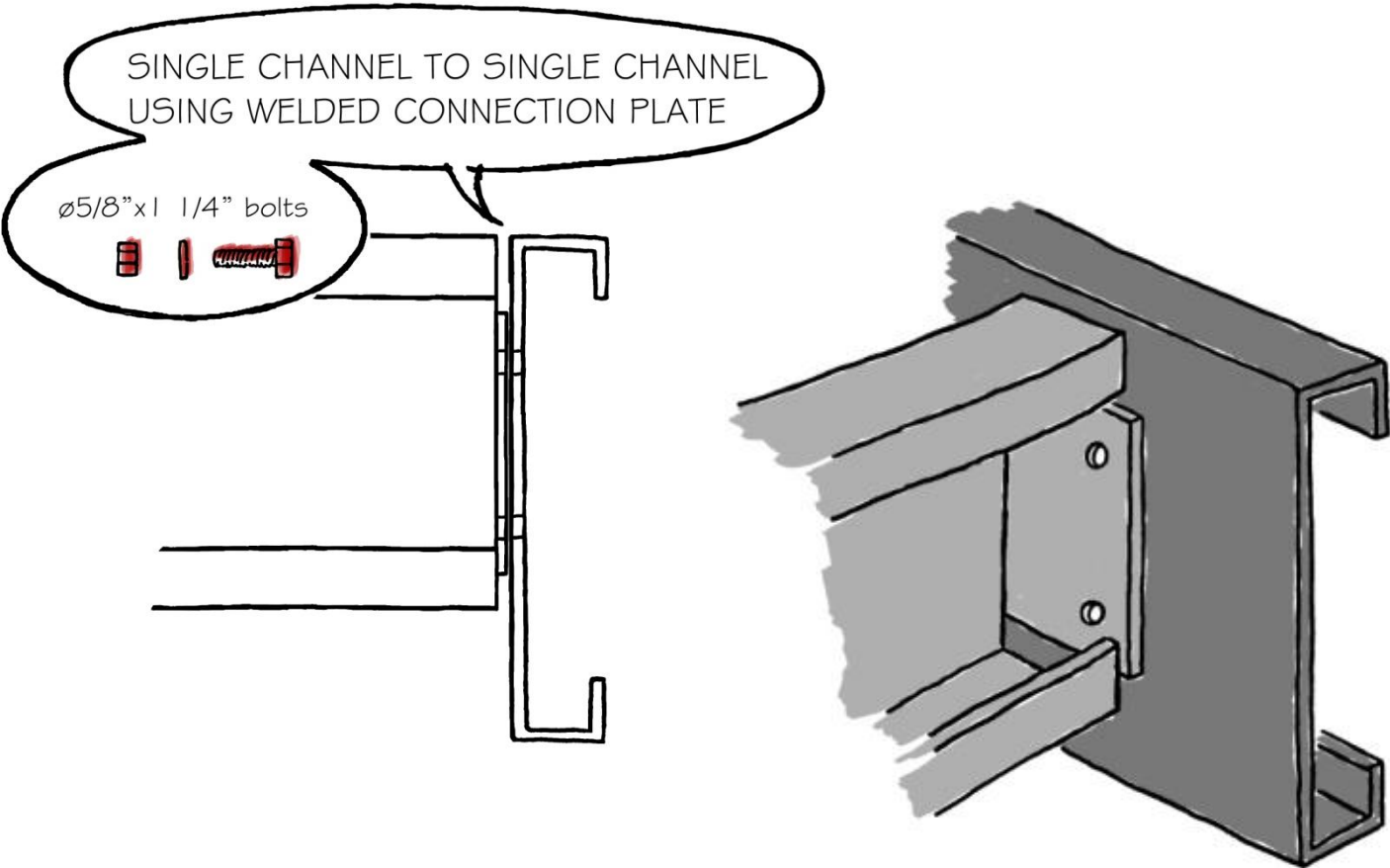
$\phi 5/8"$ x $1\ 3/4"$ bolts



JOIST TO BEAM CONNECTION (CHANNEL TO CHANNEL USING WEB ANGLE)

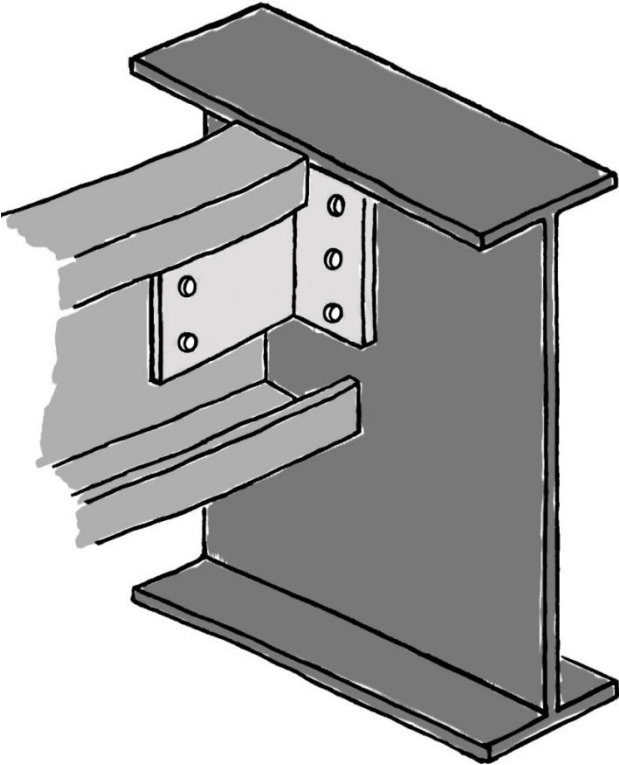
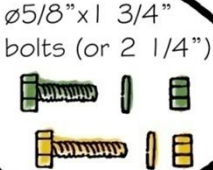
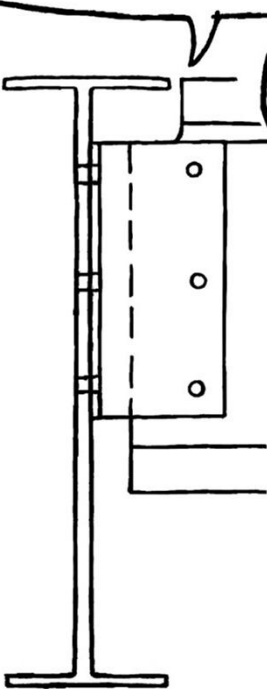


JOIST TO BEAM CONNECTION (CHANNEL TO CHANNEL USING WELDED CONNECTION PLATE)

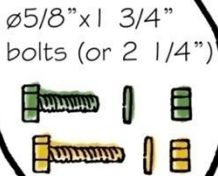
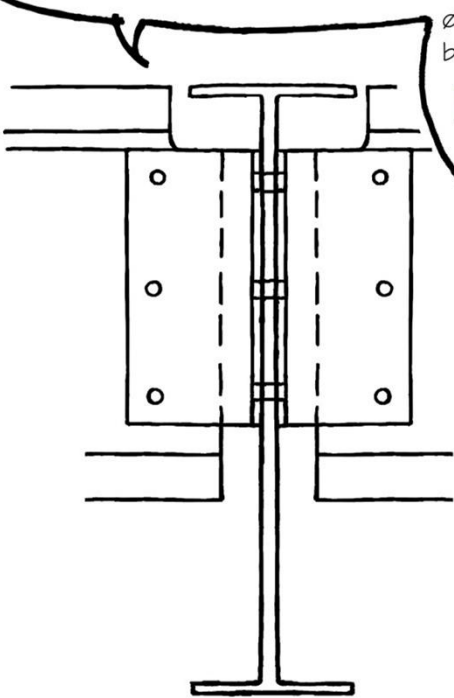


JOIST TO BEAM CONNECTION (CHANNEL TO I-BEAM USING WEB ANGLE)

ONE SINGLE CHANNEL TO SINGLE I-BEAM USING WEB ANGLE



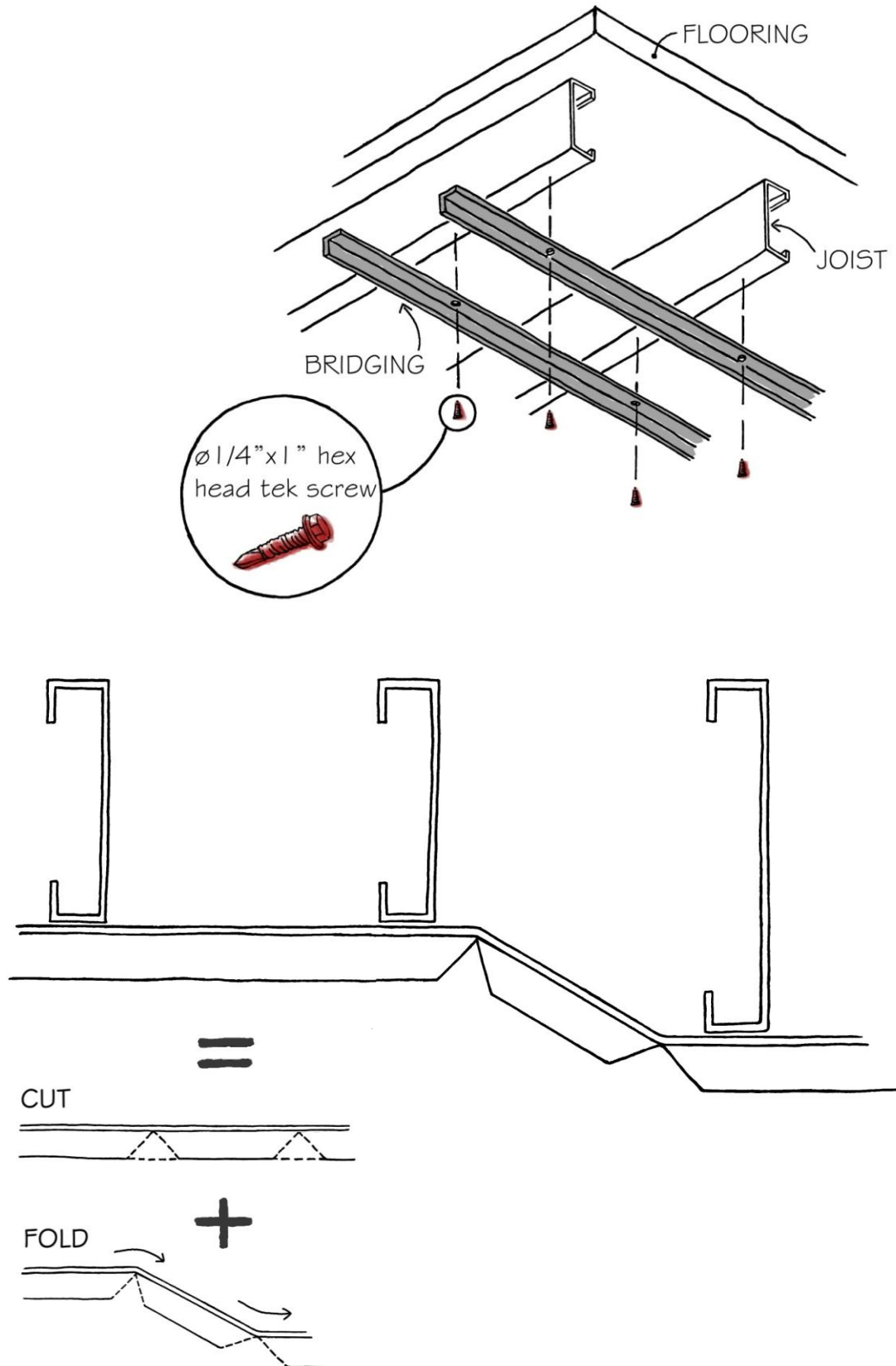
TWO SINGLE CHANNELS TO SINGLE I-BEAM USING WEB ANGLE



BRIDGING

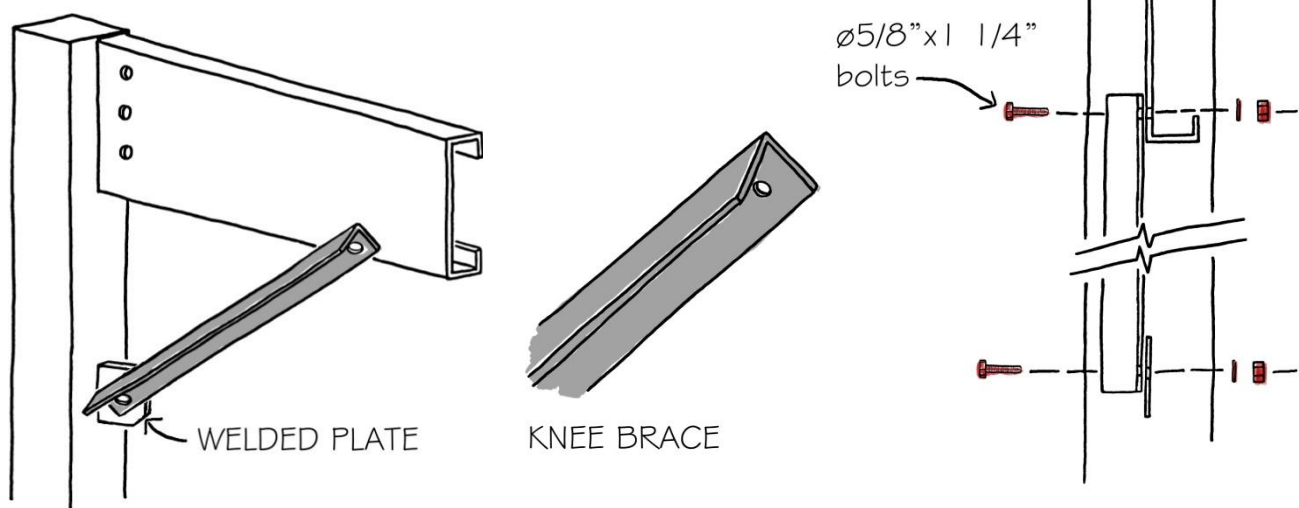


ASSEMBLE ACCORDING TO THE ORIENTATION INDICATED ON THE INSTALLATION PLAN

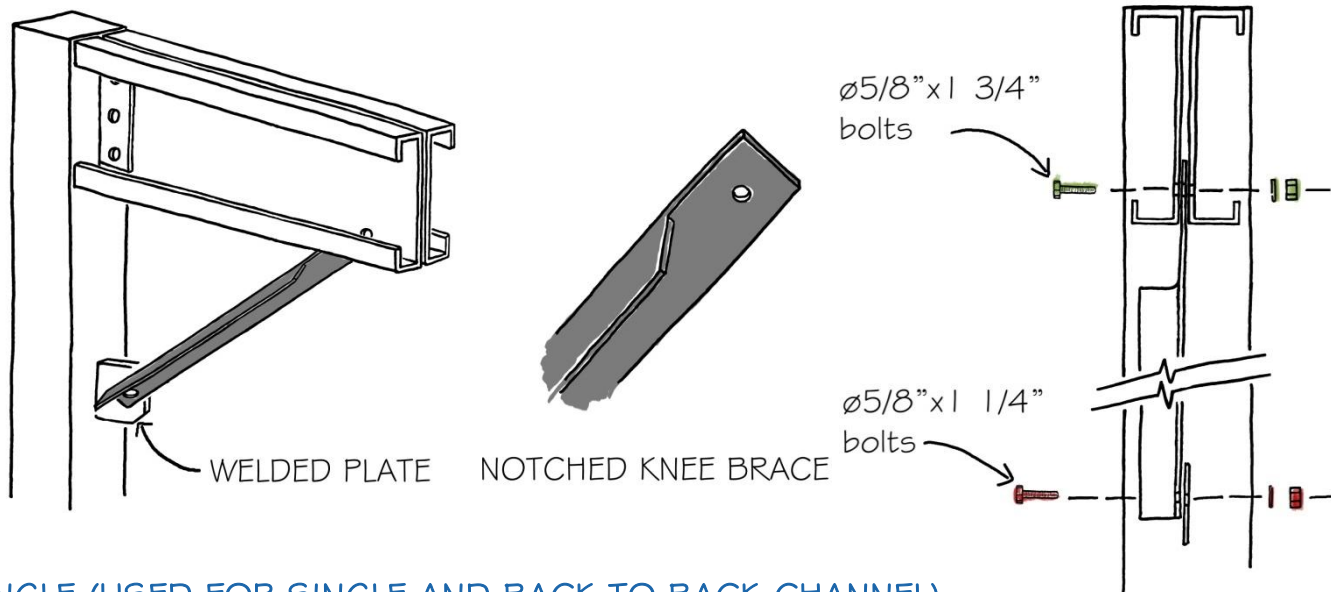


STEP 4

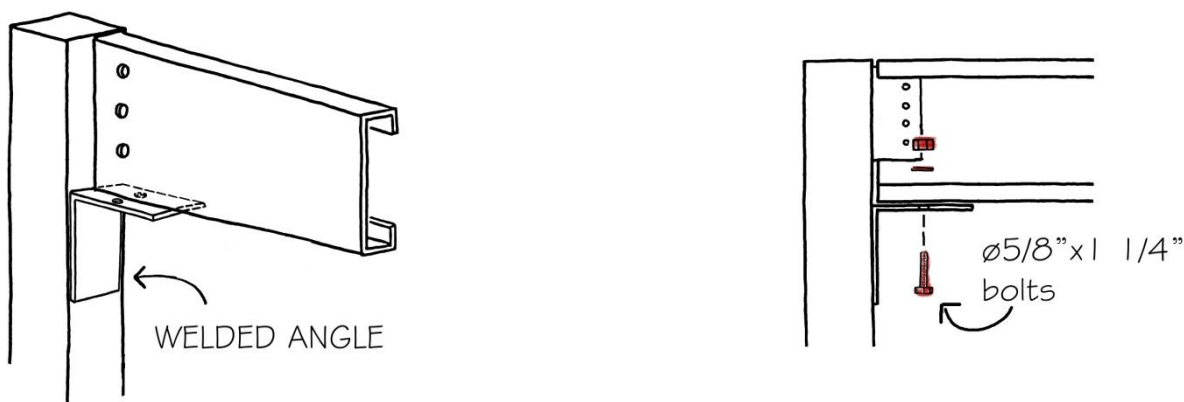
BRACES (KNEE BRACE TO SINGLE CHANNEL)



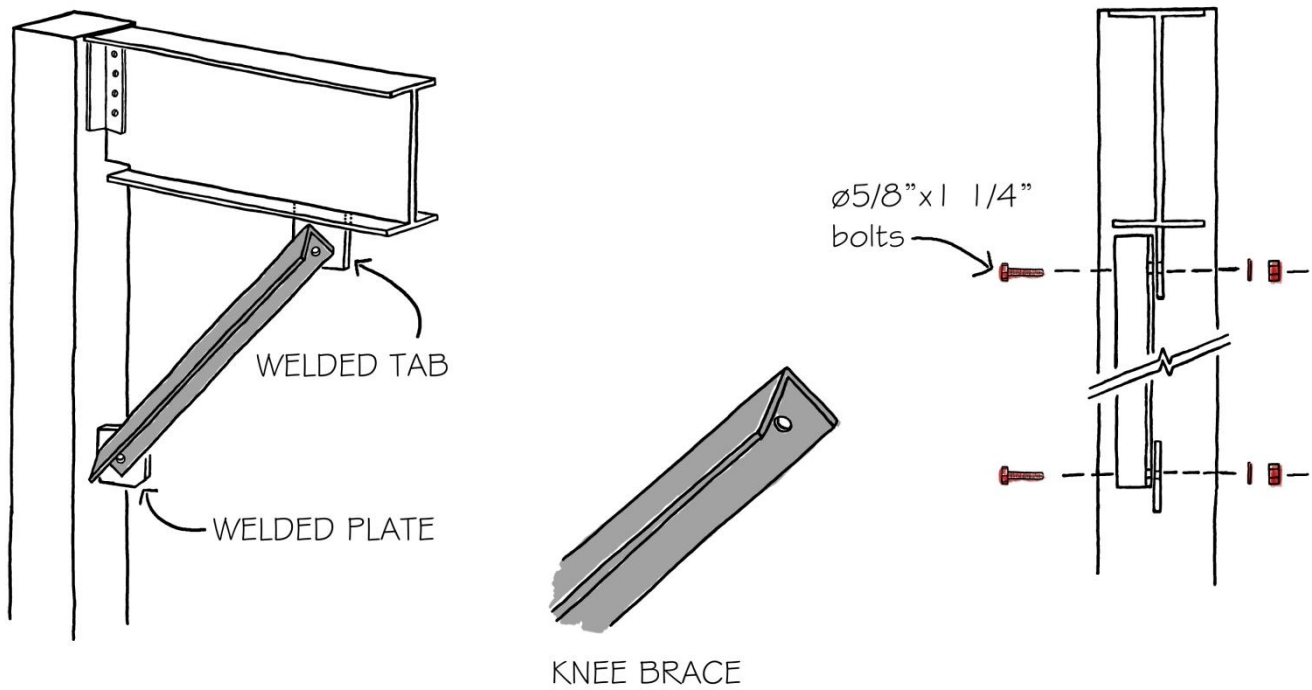
BRACES (KNEE BRACE TO BACK TO BACK CHANNEL)



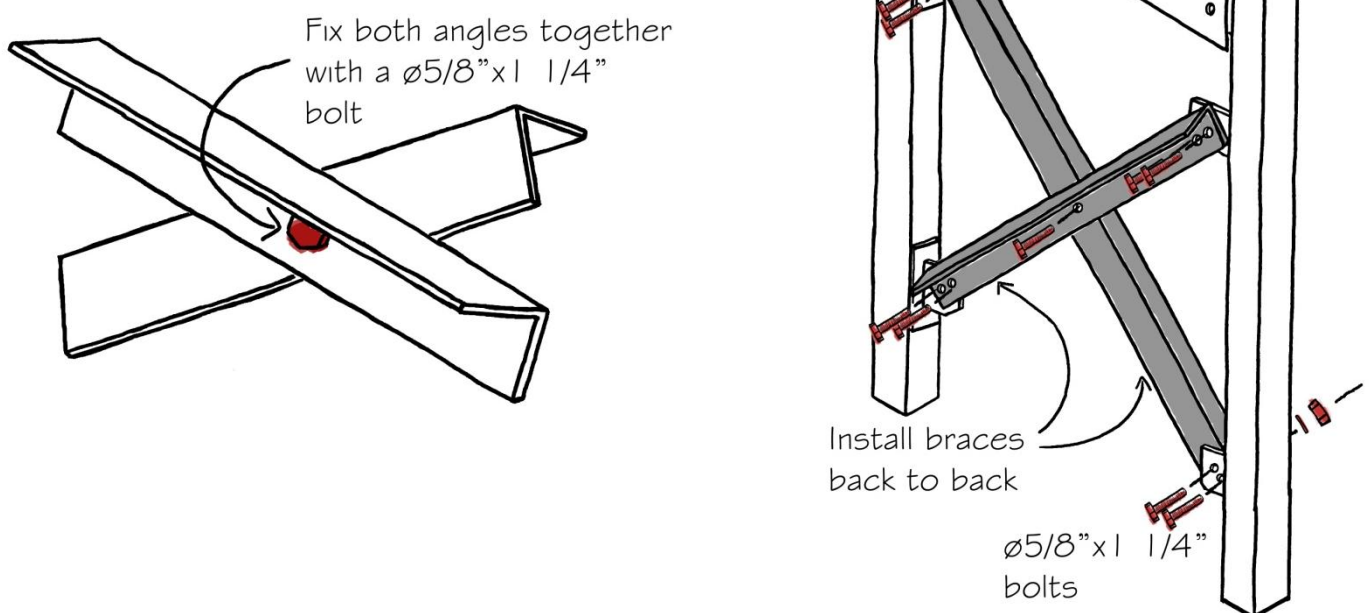
ANGLE (USED FOR SINGLE AND BACK TO BACK CHANNEL)



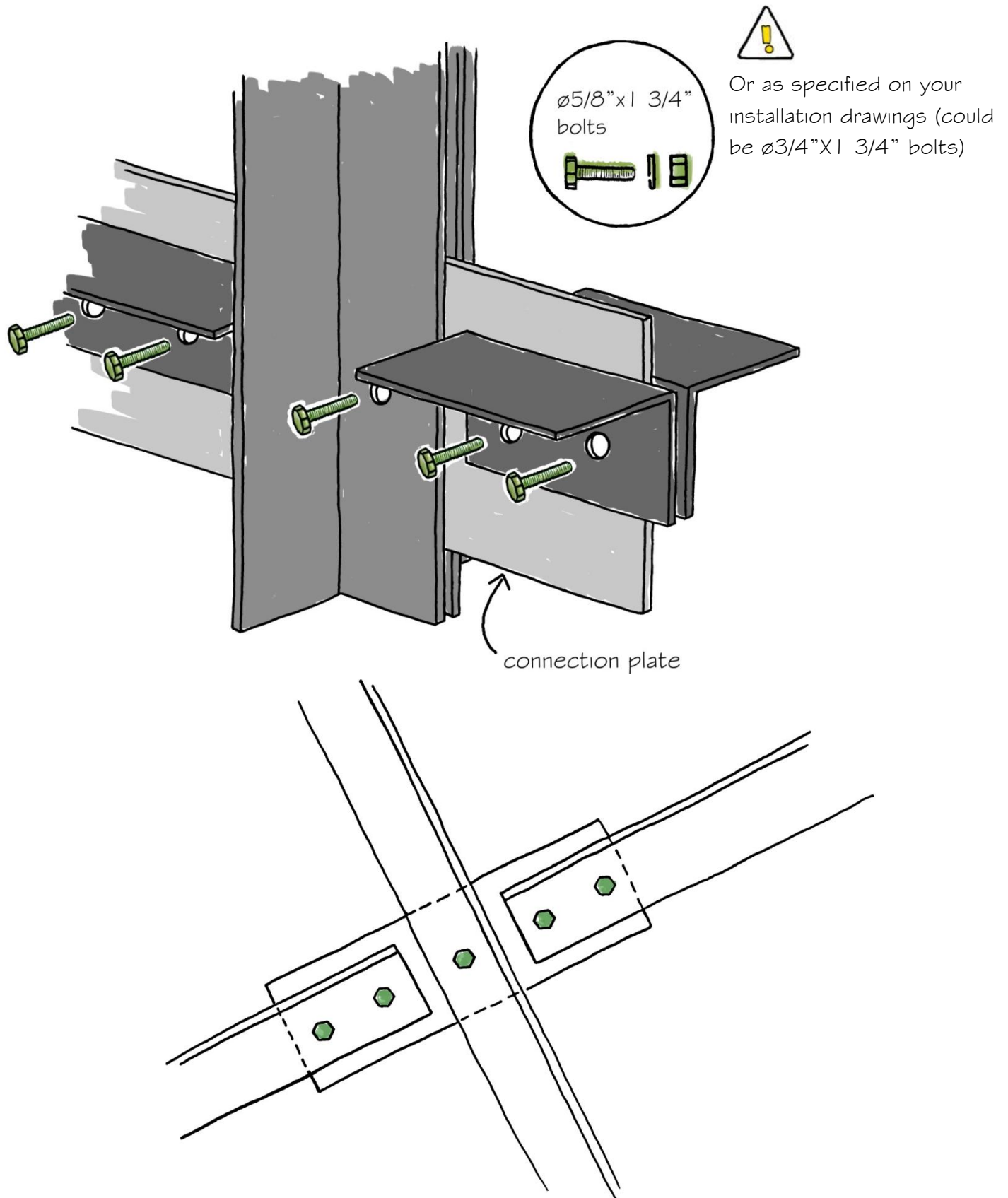
BRACES (KNEE BRACE TO I-BEAM)



BRACES (CROSS BRACE)

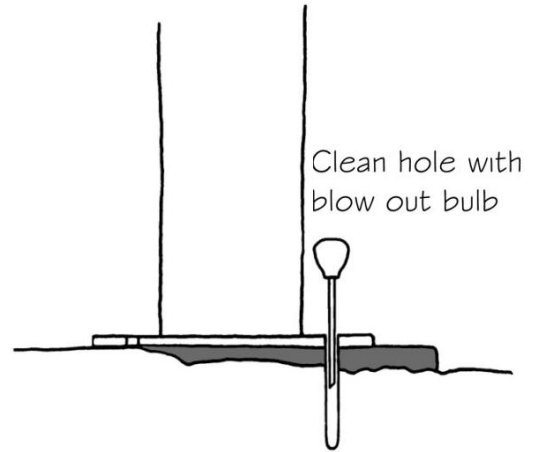
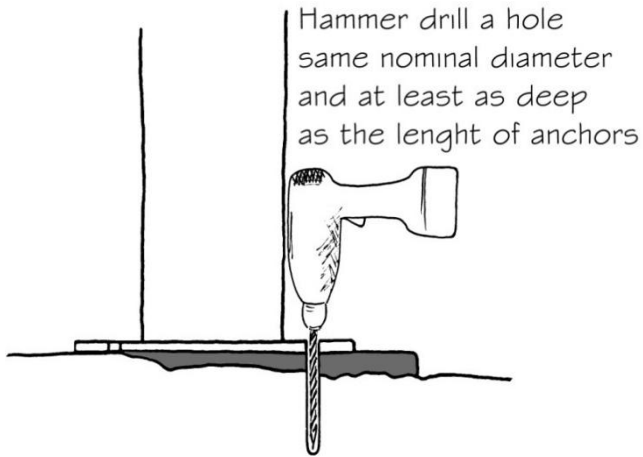
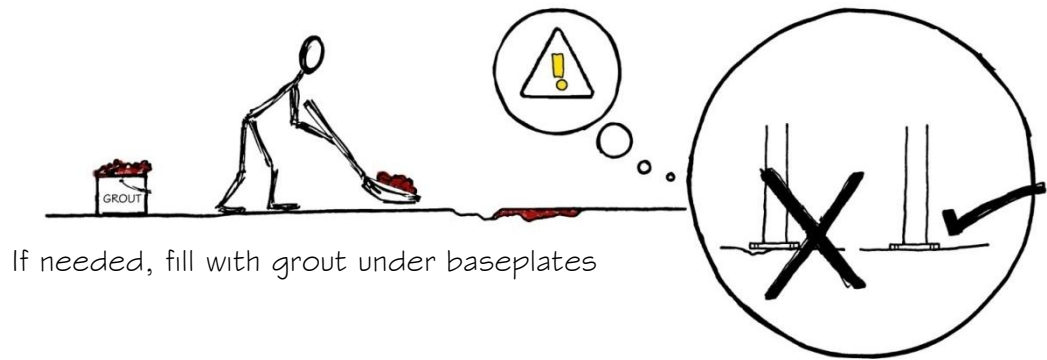


BRACES (DOUBLE CROSS BRACE)

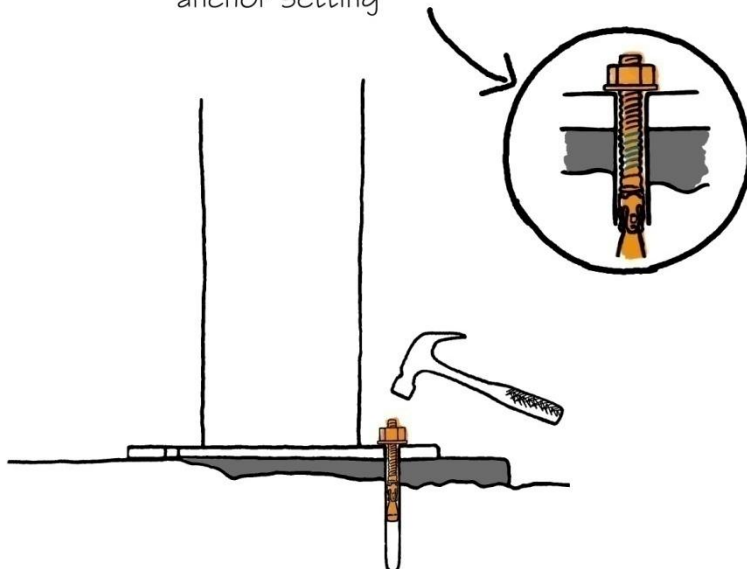


STEP 5

ANCHORING



Drive the hilti bolt in the hole so that at least **6 threads** are below the top surface of fixture. Then tighten to the recommended torque value to achieve proper anchor setting



ø5/8"x6" min bolts (anchors) are used for baseplates

