

# IMPORTANT SAFETY INSTRUCTIONS

When using electrical appliances, especially when children are present, basic safety precautions should always be taken, including the following:

## READ ALL INSTRUCTIONS BEFORE USING KEEP AWAY FROM WATER

**DANGER** – Any hair dryer is electrically live even when the switch is off. To reduce the risk of death or injury by electric shock:

1. **ALWAYS UNPLUG APPLIANCE IMMEDIATELY AFTER USING.**
2. Do not use while bathing or in a shower.
3. Do not place or store appliance where it can fall or be pulled into a tub or sink.
4. Do not place in, or drop into, water or other liquids.
5. If an appliance falls into water, unplug it immediately. **Do not reach into the water.**

**WARNING** – To reduce the risk of burns, electrocution, fire, or injury to persons:

1. **This appliance should never be left unattended when plugged in.**
2. This appliance should not be used by, on, or near children or by individuals with certain disabilities.
3. Use this appliance only for its intended use as described in this manual. Do not use attachments not recommended by the manufacturer.
4. **Never operate this appliance if it has a damaged cord or plug, if it is not working properly,**

or if it has been dropped into water. Return the appliance to a Conair Service Center for examination and repair.

5. Keep the cord away from heated surfaces. **Do not pull, twist, or wrap line cord around dryer, even during storage.**
6. Never block the air openings of the appliance or place it on a soft surface, such as a bed or couch, where the air openings may be blocked. Keep the air openings free of lint, hair, and the like.
7. Never use while sleeping.
8. Never drop or insert any object into any opening.
9. Do not use outdoors or operate where aerosol (spray) products are being used or where oxygen is being administered.
10. Do not use an extension cord to operate dryer.
11. Do not direct hot air toward eyes or other heat-sensitive areas.
12. **Attachments may be hot during use. Allow them to cool before handling.**
13. Do not place appliance on any surface while it is operating.
14. While using the appliance, keep your hair out of it. Keep your hair away from the air inlets.
15. Do not use with a voltage converter.

## SAVE THESE INSTRUCTIONS

# OPERATING INSTRUCTIONS

This appliance is intended for household use only. Use on Alternating Current (60 hertz) only. Standard dryers are designed to operate at 110 to 125 volts AC.

This appliance has a polarized plug (one blade is wider than the other). As a safety feature, this plug will fit in a polarized outlet only one way. If the plug does not fit fully in the outlet, reverse the plug. If it still does not fit, contact a qualified electrician. Do not attempt to defeat this safety feature.

## IMPORTANT 1875 WATT OPERATING GUIDE

Use of this dryer on the same circuit or fuse with other electrical products or appliances may trip a 15 amp circuit breaker or blow a 15 amp fuse. **NEVER replace the fuse with one rated higher than the capacity of the circuit. Doing so could result in an electrical fire.**

Should the appliance go off and the reset button pop up during use, it could indicate a malfunction in the unit. Remove plug from outlet and allow the appliance to cool. Make sure air intake vents are clean. Reinsert plug into outlet.

The appliance should then function normally. If not, return it to an authorized Conair Service Center for evaluation and repair.

### SUPER STYLING GUIDE

Your best looks begin with a good haircut that's well maintained. Always treat hair right with superior quality shampoos, conditioners, and finishing products.

### DRYING BASICS

1. Shampoo and condition hair with products of your choice. Rinse thoroughly. Towel-dry hair to remove excess moisture. Using the dryer along with your styling brush, start at a lower setting and direct hot air through a section of hair at a time. Move dryer steadily across each section so that the hot air passes through hair. Direct airflow at hair, not scalp. Clouds of negatively charged ions will help to reduce static electricity, control frizzy flyaways and contribute to your hair's shine.
2. Keep dryer's air intake vents unobstructed and free from hair while drying.
3. To avoid over-drying, do not concentrate heat on any one section for an extended length of time. Keep dryer moving as you style.
4. For quick touch-ups between shampoos, dampen hair with a mist of water before styling with the dryer.
5. When using your dryer to create curls and waves, dry hair almost completely on a warmer temperature setting with the snap-on diffuser attachment, then finish styling with cold shot feature to quickly close hair shaft and lock in style.
6. Use snap-on/snap-off concentrator attachment for more direct airflow and pinpoint styling.

### BODY & VOLUME

To create extra volume, turn head upside down while drying. Position the airflow toward the roots for maximum lift. When hair is dry, toss head back and brush hair into place.



### STRAIGHTENING

Work with hair in sections when creating a super-straight look. Using a large round brush (approximately 2" diameter), hold hair taut in each section and bend ends slightly under as you dry.

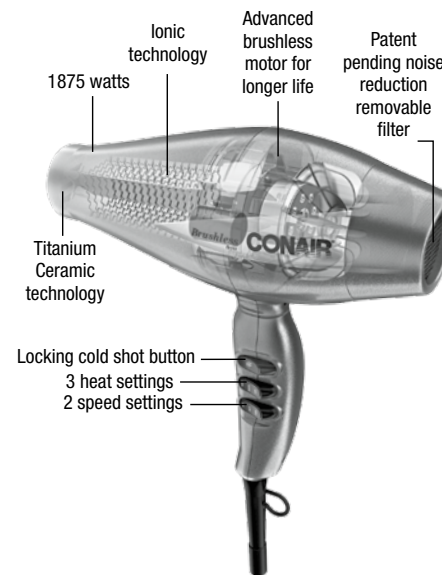


### MAKING WAVES

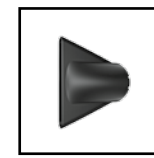
Tousled, natural-looking waves are easily created by grasping hair at the roots and scrunching between fingertips while drying. For curlier, wavier hair use the diffuser attachment.



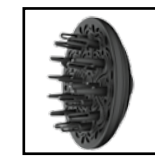
## GETTING TO KNOW YOUR DRYER



Brush



Concentrator



Diffuser

select your setting	
speed/temp.	hair type
low/cool	delicate, thin, or easy-to-style hair
low/warm	average to thick or treated hair
high/hot	thick, coarse or hard-to-style hair
cold shot	sets style in place for all hair types

The Infiniti Pro by Conair® 3Q Styling Tool is very effective even at lower temperatures, and helps create healthier-looking, shiny, more manageable hair with maximum styling control.

### ADVANCED BRUSHLESS MOTOR TECHNOLOGY

While regular dryer motors use carbon brushes that wear out over time causing the motor to stop working, the brushless motor uses magnets and electronics that do not wear out. This extends the life of the dryer by over 10x\* and achieves far greater energy efficiency and air velocity for dramatically reduced drying time. All the power with less weight and noise.

### REMOVABLE FILTER

The patent pending, noise reduction, removable filter reduces noise by up to 40%\*\*.

**TITANIUM CERAMIC TECHNOLOGY** produces full-spectrum, infrared heat that works on molecules inside the hair shaft, drying it inside and out. This fast and easy drying process minimizes heat damage and makes hair less frizzy and more manageable.

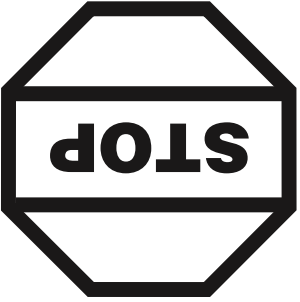
**THE IONIZING FUNCTION** generates a cloud of negative ions that can:

- help reduce frizz by up to 75%\*\*\*
- neutralize the generally positive charge on flyaway, frizzy hair
- eliminate static electricity
- contribute to shine

*\*When compared to standard AC motor hair dryer models.*

*\*\*When compared to 3Q dryer without patent pending noise reduction technology*

*\*\*\*When compared to hair dryers with natural ion generation*



This message about...

**CGFI**  
CIRCUIT  
FAULT  
ROUND

...can save a life!

### IF YOU MUST USE YOUR HAIR DRYER IN THE BATHROOM, INSTALL A GFCI\* NOW!

Your local electrician can help you decide which type is best for you — a portable unit that plugs into the electrical outlet or a permanent Electrical Code now requires GFCIs in the bathrooms, garages, and outdoor outlets of all new homes.

**WHY DO YOU NEED A GFCI?** Electricity and water don't mix. If your hair dryer falls into water while it's plugged in, the electric shock can kill you...



**even if the switch is off.** A regular fuse or circuit breaker won't protect you under these circumstances. A GFCI offers you far greater protection.

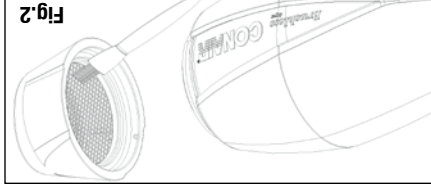
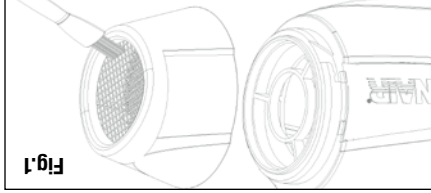
**A GFCI can save your life! Compared to that, the price is small! Don't wait...install one now!**

\*A GFCI is a sensitive device that reacts immediately to a small electric current leak by stopping the electricity flow.

### USER MAINTENANCE

Your dryer is virtually maintenance free. No lubrication is needed. For proper operating performance, the dryer must be kept clean.

When cleaning is needed, unplug the cord, allow to cool. To clean the inlet grill, remove the rear filter by gently turning counterclockwise. Take supplied cleaning brush and brush along both the outside (see Fig. 1) and inside (see Fig. 2) of the inlet grill mesh to remove all lint and dirt. Then re-attach the rear filter by gently twisting it clockwise onto the dryer. The outer surface of the dryer should be wiped clean with a cloth only.



**Blocked or clogged air intake vents will cause the dryer to overheat.** If overheating occurs, an automatic safety device will shut the dryer or the heat off to prevent damage or personal injury. If the unit or the heat turns off, unplug the cord and allow the dryer to cool for 10 to 15 minutes before restarting. Make sure the air vents are clean.

### CAUTION

NEVER allow the power supply cord to be pulled, twisted, or severely bent. Never wrap the cord tightly around the dryer. Damage will occur at the high flex point of entry into the dryer, causing it to rupture and short-circuit. Inspect the cord frequently for damage. To obtain service under this warranty, return the defective product to the service centre listed below, together with your purchase receipt and \$7.50 for postage and handling. In the absence of a purchase receipt, the warranty period shall be 60 months from the date of manufacture.

**STORAGE – Important**  
When not in use, your dryer should be disconnected, allowed to cool and stored in a safe, dry location, out of reach of children. Do not wrap line cord around dryer. Allow the cord to hang or lie loose and straight at the point of entry into the dryer.

### LIMITED FIVE-YEAR WARRANTY

Conair will repair or replace (at our option) your unit free of charge for 60 months from the date of purchase if the appliance is defective in workmanship or materials.

**ANY IMPLIED WARRANTIES, OBLIGATIONS, OR LIABILITIES, INCLUDING BUT NOT LIMITED TO THE IMPLIED WARRANTY OF MERCHANTABILITY AND FITNESS FOR A PARTICULAR PURPOSE, SHALL BE LIMITED IN DURATION TO THE 60 MONTH DURATION OF THIS WRITTEN, LIMITED WARRANTY.**  
IN NO EVENT SHALL CONAIR BE LIABLE FOR ANY DAMAGES FOR BREACH OF THIS OR ANY OTHER WARRANTY, EXPRESS OR IMPLIED, WHATSOEVER. This warranty gives you specific legal rights, and you may also have other rights, which vary from province to province.



### Have a Question?

**Please do not return this product to the retailer.**  
**Call us First!**

Our customer service and product experts are ready to answer All your questions.  
Please call our TOLL-FREE customer service number at: 1-855-926-6247 or visit us online at [www.conaircanada.ca](http://www.conaircanada.ca)

**Instruction & Styling Guide**  
Model 30C

**SERVICE CENTRE:**  
CONAIR CONSUMER PRODUCTS ULC  
100 Conair Parkway  
Woodbridge, Ontario, L4H 0L2  
©2014 CONAIR CONSUMER PRODUCTS ULC  
For more information on any Conair product call: 1-855-926-6247  
Visit our Web site: [www.conaircanada.ca](http://www.conaircanada.ca)  
Consumer Call Centre E-mail: [Consumer\\_Canada@Conair.com](mailto:Consumer_Canada@Conair.com)  
14CN146962

IB-13059