

FIGURE 1

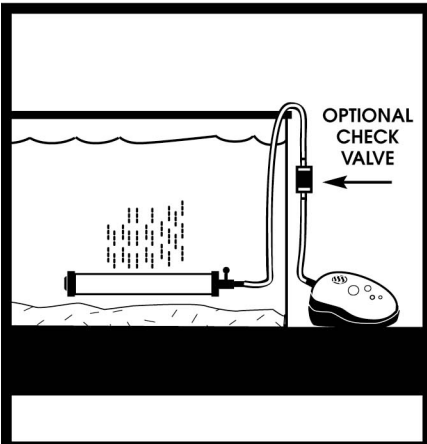


FIGURE 2

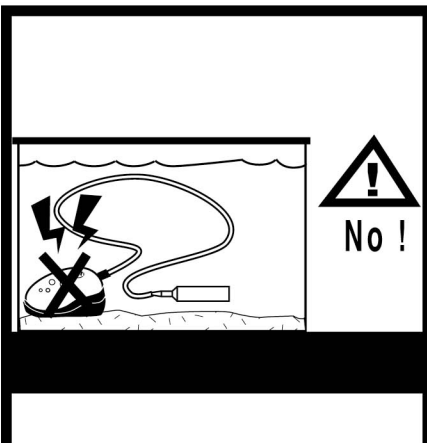
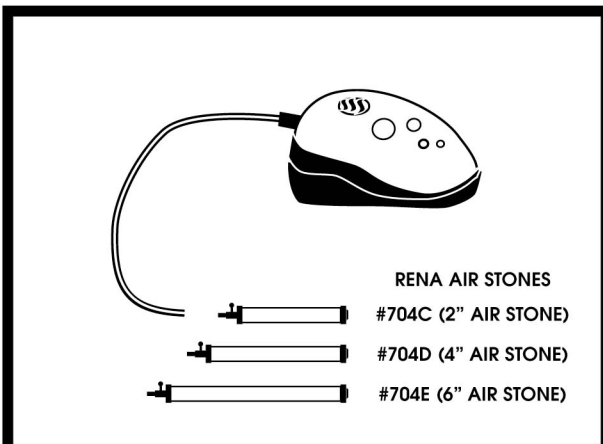
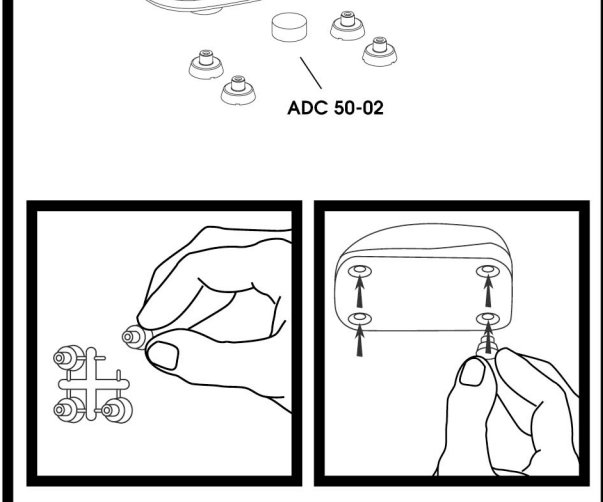
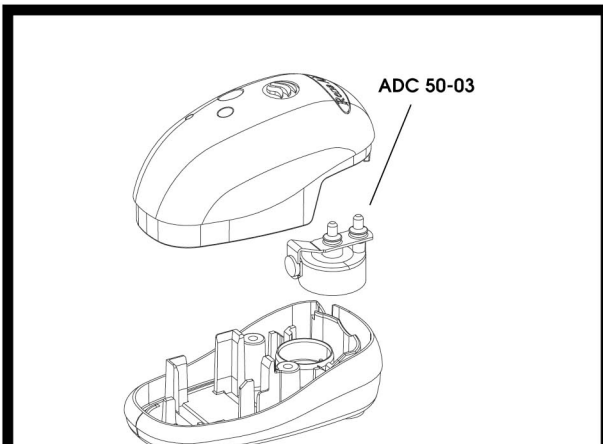


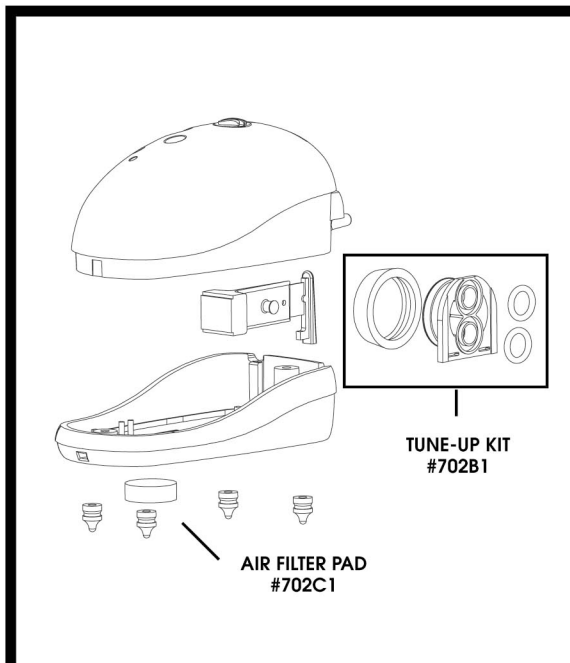
FIGURE 3



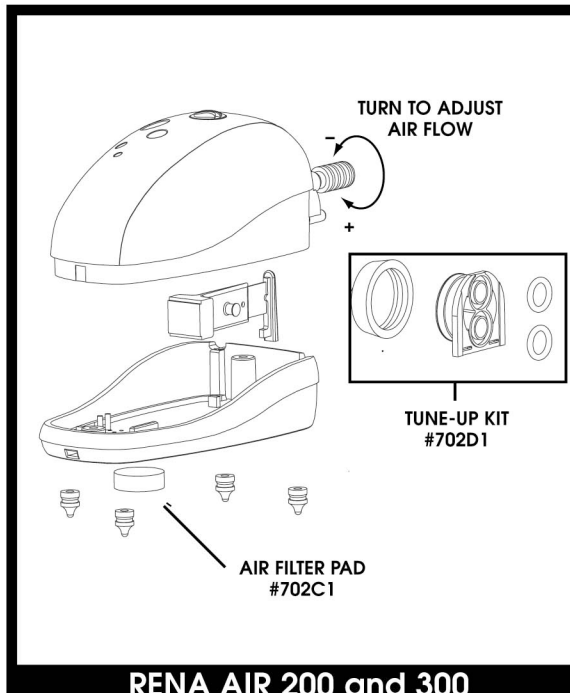
RENA AIR ACCESSORIES



RENA AIR 50



RENA AIR 100
REPLACEMENT PARTS



RENA AIR 200 and 300
REPLACEMENT PARTS

OPERATING INSTRUCTIONS:

For Indoor Use ONLY — Please note safety instructions on the reverse side.

Care must be taken to prevent any back flow of water from entering the unit when it is turned off. Water in the unit will cause damage or even render the unit inoperable. It is recommended that the unit be installed above the water level of the aquarium (See **FIGURE 1**). However, the unit should NOT be placed where it could fall into the aquarium. If the unit is installed at or below the water level, the use of a non-return check valve is highly recommended.

A drip-loop should be arranged to prevent water coming in contact with the electric receptacle (See **FIGURE 1**). Once your air diffuser is attached, you may plug the unit in to start the airflow. The **Rena Air 200 & 300** Air Pumps are equipped with a control knob to adjust the airflow into the aquarium (See **RENA AIR 200 and 300 REPLACEMENT PARTS**).

Maintenance: To maximize the output of your air pump, you should replace the diaphragm when you notice a drop in the airflow. Smoke and cooking oils can build up in the air pump and will shorten the life of the interior parts, causing a drop in air flow. The air filter pad located on the bottom helps to protect and lengthen the life of these parts and should be replaced monthly.



AQUARIUM PHARMACEUTICALS, INC.

P.O. Box 218 • Chalfont, PA 18914

www.aquariumpharm.com

Technical Service: 1-800-847-0659

MADE IN FRANCE

Rena France • Anancy, France

Rena is a registered trademark of Rena France, Anancy, France
 © registered trademark of Aquarium Pharmaceuticals, Inc.
 © 2003 Aquarium Pharmaceuticals, Inc. R400-03-1203