

## PARTS LIST

Refer to the Exploded View Drawing for the location of parts listed below

ITEM	DESCRIPTION	ITEM	DESCRIPTION
1	CYLINDER BUSHING	35	FIXED MAGAZINE
2	PLUNGER	36	SPRING WASHER 6
3	O-RING 19.2 1.8	37	SCREW M6 35
4	O-RING 15.9 1.8	38	FEEDER SHOE
5	POPPET	39	SPRING
6	O-RING 42.5 5.4	40	BAFFLELOCK
7	O-RING 17.5 2.6	41	MAGAZINE PLATE
8	O-RING 57.4 3.5	42	SCREW
9	PISTON ASSEMBLY	43	SPRING
10	HAMMER FACE	44	SCREW M4 16
11	SCREW M5 16	45	LIMITED PLATE
12	CYLINDER CAP	46	LOCK
13	SCREW M4 20	47	NUT M4
14	SPRING WASHER 4	48	SPRING WASHER 4
15	POPPET ACTUATOR	49	BUSHING
16	O-RING 54.2 3.5	50	SPRING PIN 3 12
17	SEAL	51	WASHER 4
18	BODY	52	POTHOOK
19	BUMPER	53	SCREW M3 5
20	NOSE	54	SPRING WASHER 3
21	SCREW M3 18	55	WASHER 3
22	SPRING PIN 3 14	56	LEAF SPRING
23	BAFFLE PLATE	57	SCREW M3 8
24	SCREW M5 16	58	MOVABLE MAGAZINE
25	SPRING WASHER 5	59	SPRING PIN 2.5 11
26	BLADE GUIDE	60	SCREW M3 6
27	LIMITED NAIL PLATE	61	MAGNET
28	SHOE	62	RAIL
29	JOINT GUIDER	63	NUT
30	BUSHING	64	WASHER
31	SCREW M6 16	65	CLAMP SCREW
32	CPACER	66	AIR PLUG
33	SCREW M6 12	67	ARM
34	SPRING PIN 3 20	68	H A M M E R

## OPERATING INSTRUCTIONS

### 2-IN-1 FLOORING NAILER/STAPLER

**MODEL: 10023320**

## SAFETY WARNIN

### OPERATE THE TOOL

Test the driving depth in a sample piece of wood before using. If the fasteners are being driven too far or not far enough, adjust the regulator to provide less air pressure or more air pressure.

1. Load fastener following the direction given in the section called **LOAD THE FASTENER**.
2. Connect the tool with the air supply. Make sure the air pressure is in correct range denoted in section of **SPECIFICATIONS**.
3. Hold the **LONG ARM (66)** and press the **SHOE(28)** to work surface and make sure the fastener connection position. Strike the hammer face with a hammer to drive the fastener out. As shown in Figure 10.
4. Lift the tool off the work surface.

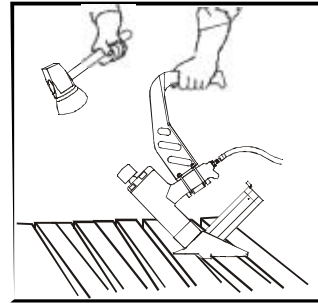


Figure 10

## READ ALL INSTRUCTIONS BEFORE OPERATING THE TOOL

### SUMMARY

You will need the instructions for the safety warning and precautions, assembly instructions, operating and maintenance procedures, parts list and diagram. Keep your invoice with these instructions. Write the invoice number upon the front cover. Keep the instructions and invoice in a safe and dry place for future reference.

### SPECIFICATIONS

Characteristic	Value
Minimum Operating Air Pressure	70 PSI
Maximum Operating Air Pressure	90 PSI
Staple Length Range	3/4" -- 2"
L-shaped Nail Length Range	1-1/2" -- 2"
Staple Size	15-1/2 Gauge
L-shaped Nail Size	16 Gauge
Load Capacity	[S] 80/ [L] 100
Air Inlet	1/4" NPT
Air Consumption	0.2 CFM at 90PSI
Tool Weight	11.5 lbs

### REGULAR MAINTENANCE

1. Frequent, but not excessive, lubrication is required for best performance. Oil added through the airline connection will lubricate inside parts. An automatic airline oiler is recommended but oil may be added manually before every operation or after about 1 hour of continuous use. Only a few drops of oil at a time are necessary. Too much oil will be gathered inside the tool and be blown out while excess shooting. **ONLY USE PNEUMATIC TOOL OIL**. Do not use detergent oil or additives as these lubricants will cause accelerated wear out the seal.
2. Use a small amount of oil on all moving surface and pivots.
3. Dirt and water in the air supply are major causes of pneumatic tool worn. Use a filter/oiler for better performance and longer life. The filter must have enough flow capacity for the specific application. Consult the manufacturer's instructions for proper maintenance of your filter.
4. Keep tools clean for better and safer performance. Use nonflammable cleaning solutions ( **CAUTION**: Such solutions may damage O-ring and other tool parts) only if necessary- **DO NOT SOAK**.

### TROUBLE SHOOTING

**STOP USING THE TOOL IMMEDIATELY IF ANY OF THE FOLLOWING PROBLEMS OCCUR. SERIOUS PERSONAL INJURY COULD OCCUR. ANY REPAIRS OR REPLACEMENTS MUST BE DONE BY A QUALIFIED PERSON OR AN AUTHORIZED SERVICE CENTER ONLY.**

PROBLEM	CAUSE	SOLUTION
Air leaking in cylinder cap	A. Loose nose screws(13). B. Gasket(17) is cracked/worn.	A. Tighten and recheck. B. Replace gasket.
Lack of power slow to cycle. Poor power of shooting and returning.	A. Tool is too dry. B. Air pressure too low. C. Exhaust blocked.	A. Drop lubricant. B. Check air supply equipment. C. Clean exhaust channel.
Shooting no fastener or intermittent feeding	A. Damaged pusher spring. B. Wrong size of fastener. C. Magazine or wear plate is dirty	A. Replace spring. B. Use standard fasteners. C. Clean magazine and nose.
Fastener is jammed in tool.	A. Driver channel is worn. B. Driver is broken/worn. C. Bent fasteners.	A. Replace wear plate. B. replace driver. C. Use standard fasteners.

### SAFETY WARNINGS & CAUTIONS

1. **KEEP WORKING AREA CLEAN.** Cluttered areas invite injuries.
2. **DON'T ALLOW CHILDREN AT THE WORKING AREA.** Don't let them handle the tool.
3. **DO NOT OPERATE THIS TOOL IF UNDER THE INFLUENCE OF ALCOHOL OR DRUGS.** Read warning label on prescriptions to determine if your judgment or reflexes are impaired while taking drugs. If there is any doubt, do not attempt to operate.
4. **USE SAFETY GLASSES.** Safety glasses should conform to ANSI Z87.1 specifications. Before operating, wear safety glasses against flying debris from the front and side. Safety glasses should be worn when loading, operating, unloading or servicing this tool.
5. **USE EAR PROTECTION.** The working area may be exposed to high noise levels that can lead to hearing damage.
6. **NEVER USE OXYGEN COMBUSTIBLE GASES, BOTTLED GASES OR HIGH PRESSURE COMPRESSED GAS AS A POWER SOURCE FOR THIS TOOL.** The tool may explode and cause serious injury.
7. **DRESS SAFELY.** Protective gloves and nonskid footwear or safety shoes are recommended when working with and operating this tool. Don't wear loose clothing or jewelry. They can get caught in moving parts. Also, wear a protective hair covering to prevent long hair from getting caught in the tool.
8. **WHEN OPERATING TOOL,** keep the proper footing and balance to avoid damaged resulting from losing balance.
9. **CHECK DAMAGED PARTS.** Before using tool, carefully check if there is any part damage.
10. **REPLACE PARTS AND ACCESSORIES.** Only allow the use of the same replacement parts while servicing. Approved accessories and replacement parts are available.
11. **KEEP ALERT.** Watch what you are doing. Use common sense. Do not operate any tool when you are tired.
12. **STORE THE TOOL.** When not in use, tool should be cleaned, fully assembled and then, stored in a dry location to reduce rust. For safety, keep out of reach of children.

**13. OUTDOOR EXTENSION CORDS.** When air compressor is used outdoors, use only rounded jacket extension cords intended for outside use. See manufacturer's manual for the AWG required for the compressor's amperage draw.

**14. PAY ATTENTION TO AIR HOSE AND THEIR CONNECTIONS.** Don't trip over hoses. Make sure all connections are tight.

**15. AFTER LOADING THE FASTENERS.** never point the tool at yourself or bystanders.

**16. USE THE CORRECT AIR CONNECTOR.** The connector on the tool must not hold pressure when the air supply is disconnected. If the wrong fitting is used, the tool can be charged with air after being disconnected and still be able to drive a fastener.

**17. WHEN CONNECTING THE AIR.** The tool may possibly fire the fasteners as soon as you plug it in to air hose. Therefore, remove all the fasteners before connecting to the air.

**18. DO NOT DEPRESS THE SAFE BRACKET AND THE TRIGGER WHEN LOADING.**

**19. IF THE FASTENERS ARE JAMMED.** Disconnect the tool from the air and remove the jammed fasteners.

**WARNING:** The warning, caution, and instructions explained in this instruction manual cannot cover all possible conditions and situations that may occur. It must be understood by the operator that **COMMON SENSE AND CAUTION ARE FACTORS WHICH CANNOT BE BUILT INTO THIS PRODUCT, BUT MUST BE SUPPLIED BY THE OPERATOR.**

**UNPACKING**

When unpacking, check and make sure that all the accessories are included. If anyone is missed or broken, please call seller for help. Refer to the follow lists.

Description	Qty
Hammer	1
Nailer/Stapler	1
S3 Hex Key	1
S4 Hex Key	1
S5 Hex Key	1
Air Tool Oil	1
Operating Instruction	1
Goggles	1
Teflon Tape	1

**SETTING**

Your air tool is fully assembled when you receive it. Before using it, attach the air line and desired air system accessories. See Figure 1 for the recommended accessories and connection order. Be sure the air hose is depressurized when install or remove adapters to the air line.

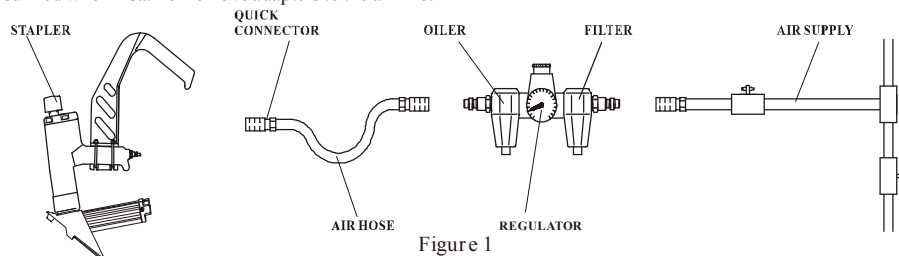


Figure 1

**CONNECT THE TOOL WITH AN AIR SUPPLY**

1. Determine if it is necessary to lubricate. If necessary, put two drops of oil into the AIR PLUG(66) as shown in Figure 2. If you are using an automatic in-line oiler, check and add oil if necessary.
2. Turn the air compressor on and adjust the regulator to a proper pressure for shooting suitable fastener.
3. Connect the tool with the air supply (Refer to Setting for air supply connection recommendations).

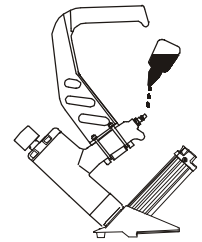


Figure 2

**LOADING THE FASTENERS**

**A. Loading the staples**

1. Hold the tool firmly, press the lock(46) and pull the movable magazine(58) See figure 3.
2. Place the specified type and size of staples in the fixed magazine (35) from upside. See figure 4.
3. Push and lock the movable magazine (58) See figure 5.

**B. Loading the L cleats**

1. Hold the tool firmly, press the lock and pull the movable magazine (58). See figure 3.
2. Place the specified type and size of L cleats in the magazine from side. The head of the L cleats should be inserted into the notch on the fixed magazine. See figure 6 and figure 7 .
3. Push and lock the movable magazine(58). See figure 5.



Figure 3



Figure 4



Figure 5



Figure 6

**CLEARING JAMS**

1. Disconnect the tool from air line. See figure 8.
2. Remove all remaining fasteners from the tool. See figure 9.



Figure 7



Figure 8

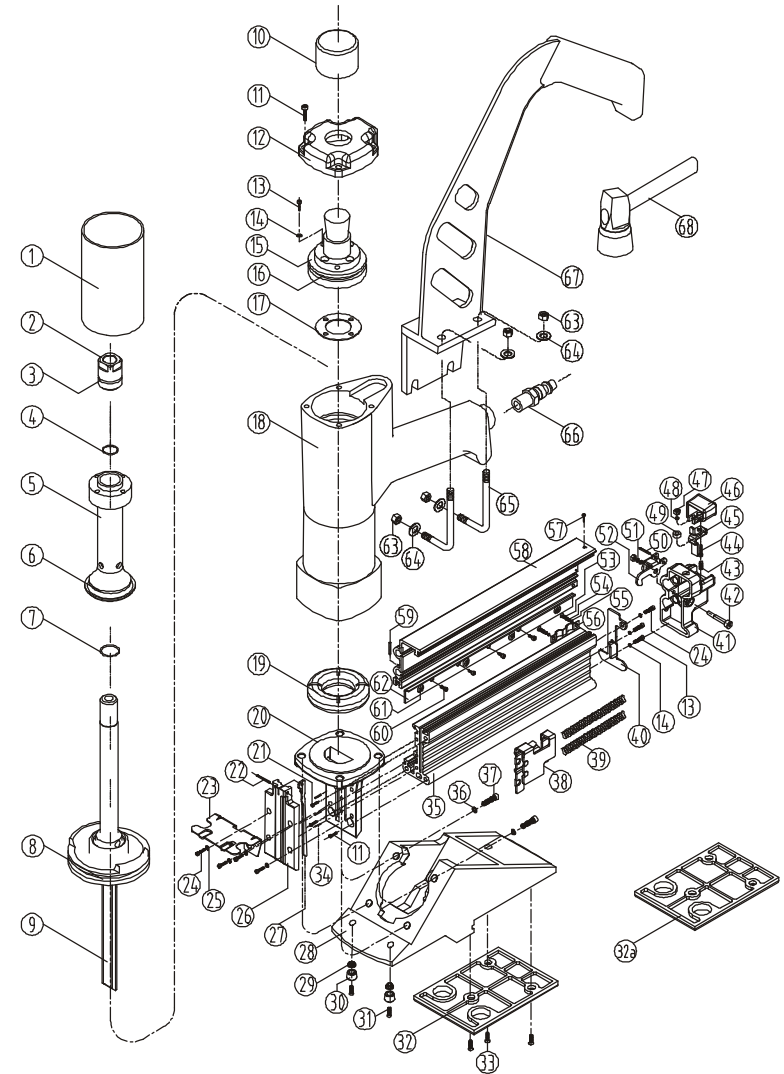


Figure 9

# CONTENTS

SUMMARY -----	1
SPECIFICATIONS -----	1
SAFETY WARNINGS & CAUTIONS -----	1
UNPACKING -----	2
SETTING -----	2
CONNECTING THE TOOL TO AN AIR SUPPLY -----	3
LOADING THE FASTENERS -----	3
CLEARING JAMS -----	3
OPERAT THE TOOL -----	4
REGULAR MAINTENANCE -----	4
TROUBLE SHOOTING -----	4
EXPLODED VIEW DRAWING -----	5
PARTS LIST -----	6

## EXPLODED VIEW DRAWING



**#32-Installed.(Spacer for 25/32"Flooring)**

**#32a-Spacer is included with tool, not installed.(Spacer for 1/2" Flooring)**