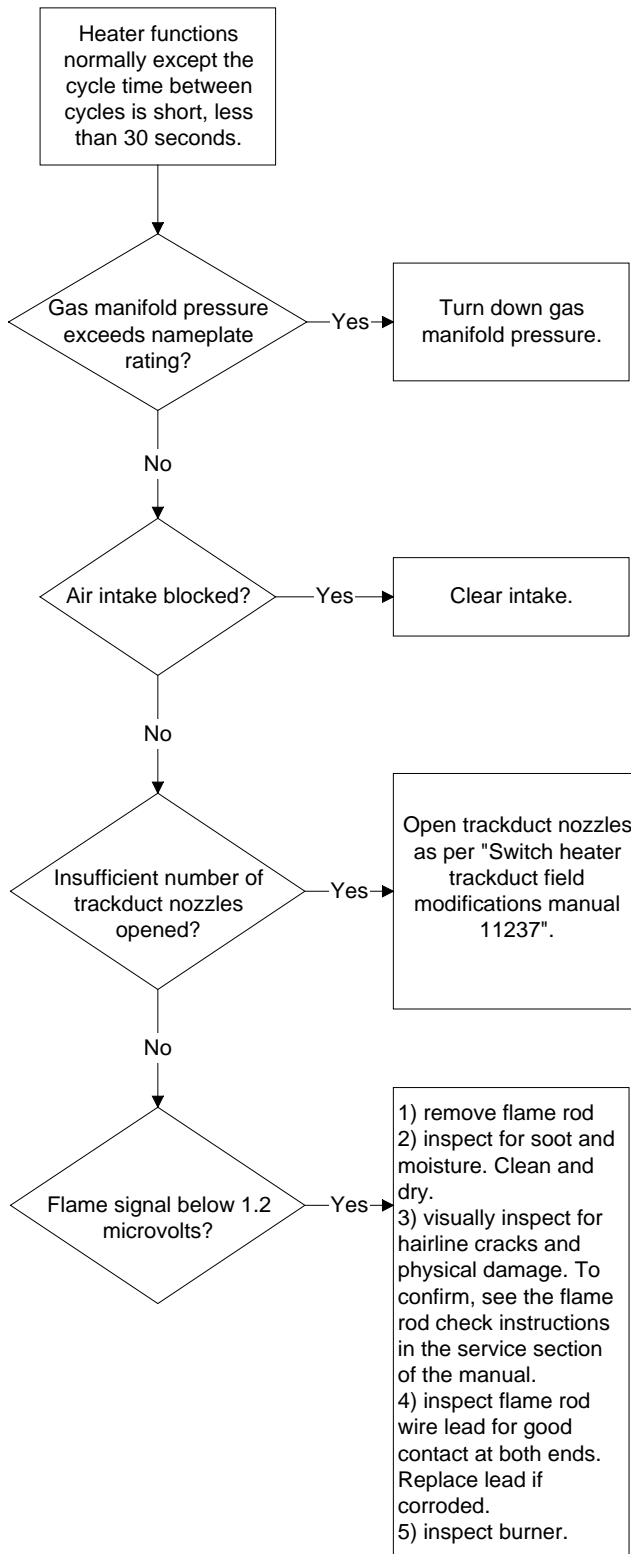
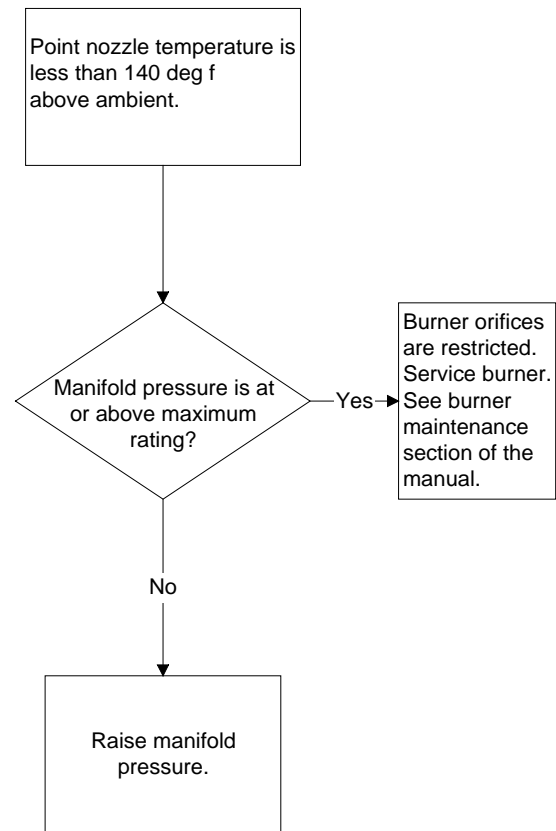


# HELLFIRE Models 900 and 900 2005 Gas Fired Switch Heater Troubleshooting Aid Flowchart

## CYCLES EXCESSIVELY

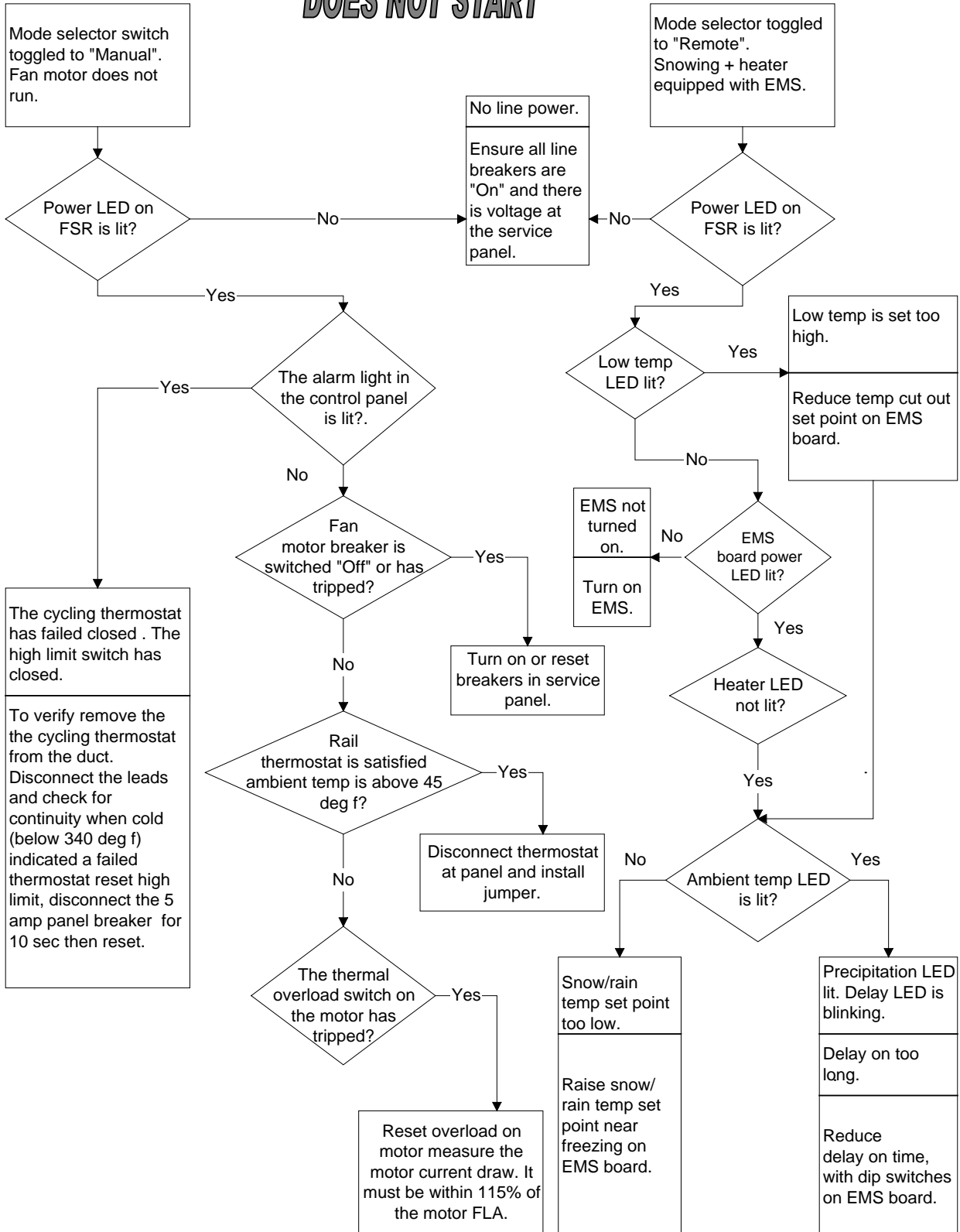


## LOW HEAT OUTPUT



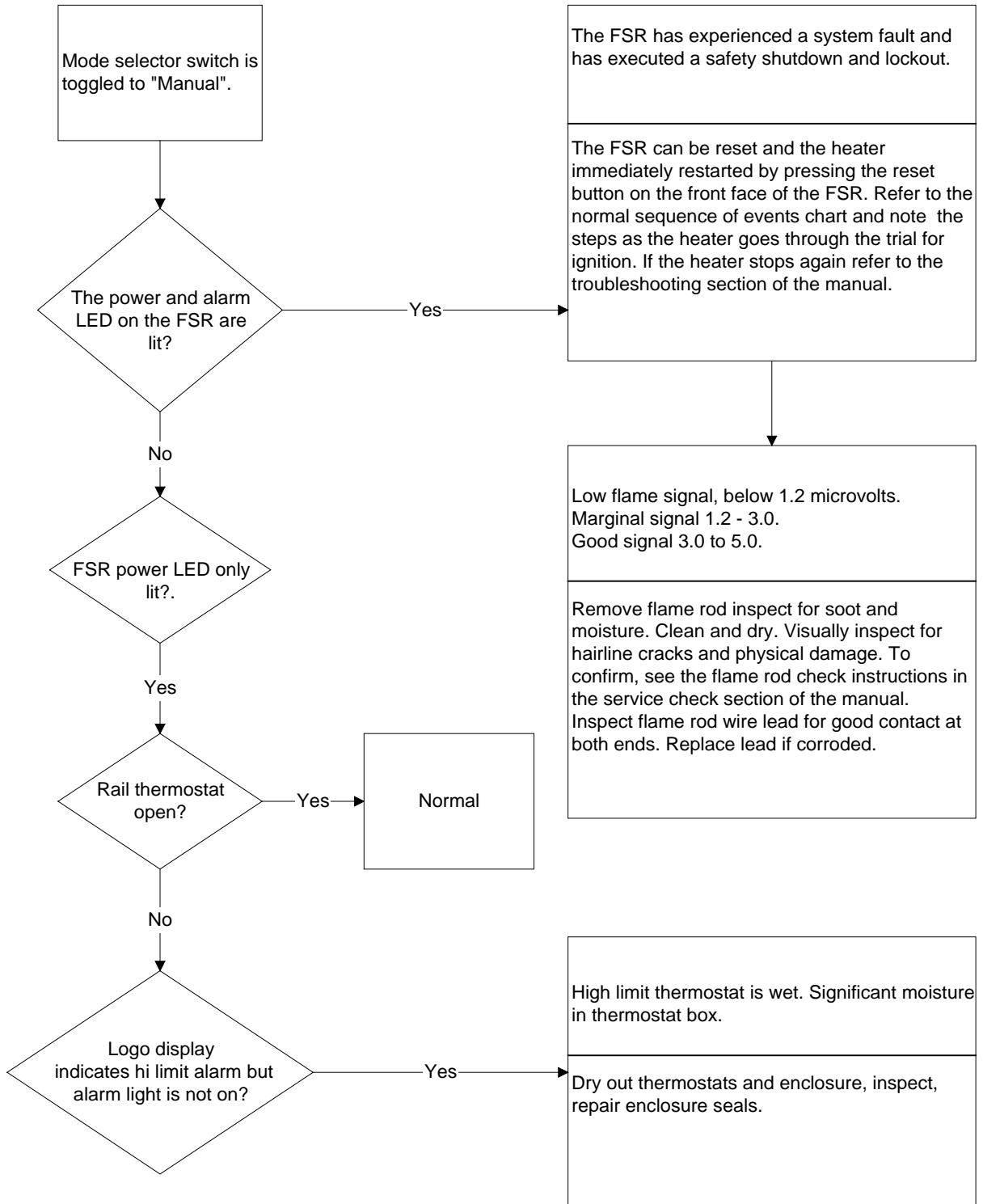
# HELLFIRE Models 900 and 900 2005 Gas Fired Switch Heater Troubleshooting Aid Flowchart

## DOES NOT START



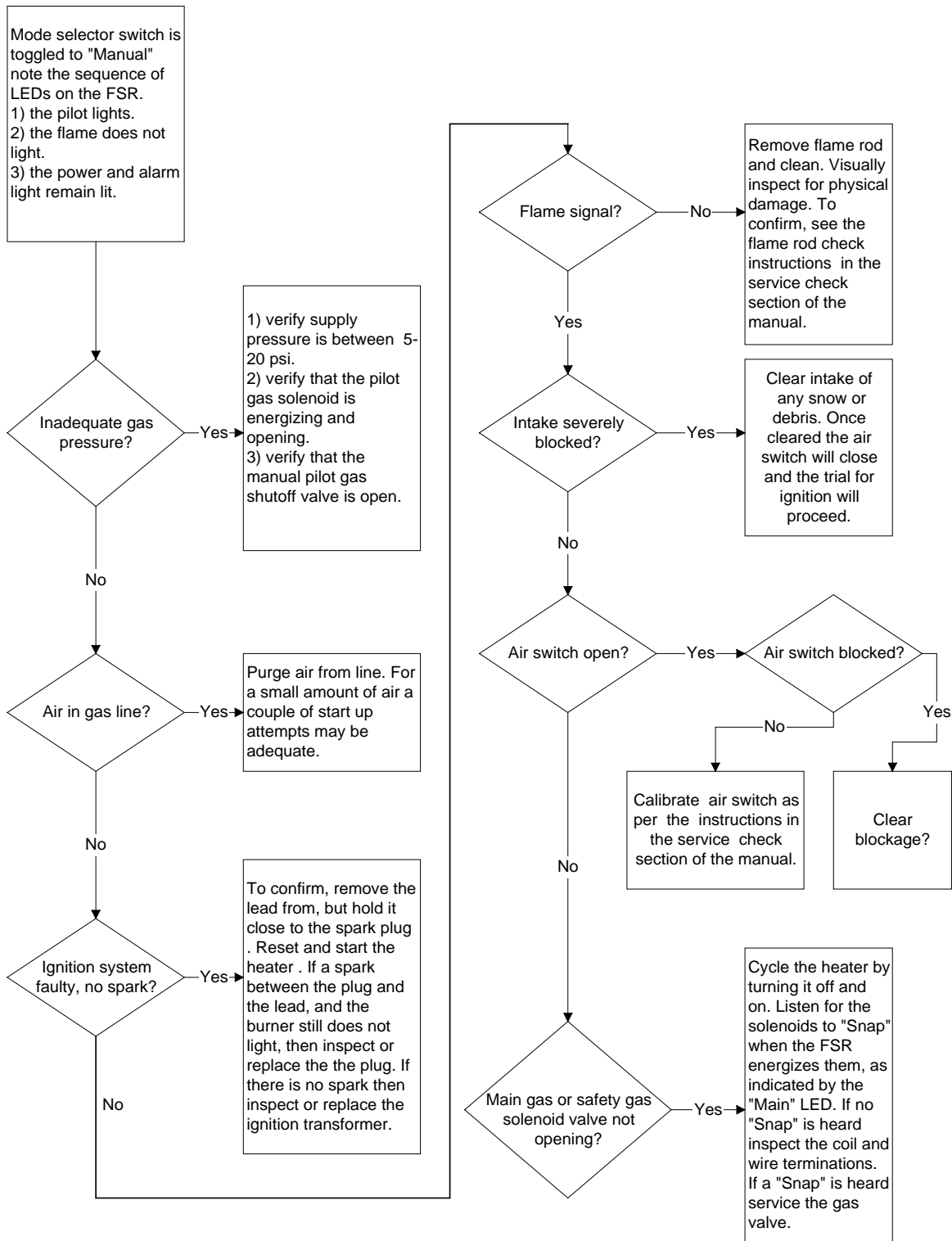
# HELLFIRE Models 900 and 900 2005 Gas Fired Switch Heater Troubleshooting Aid Flowchart

## **STOPS AFTER RUNNING NORMALLY**



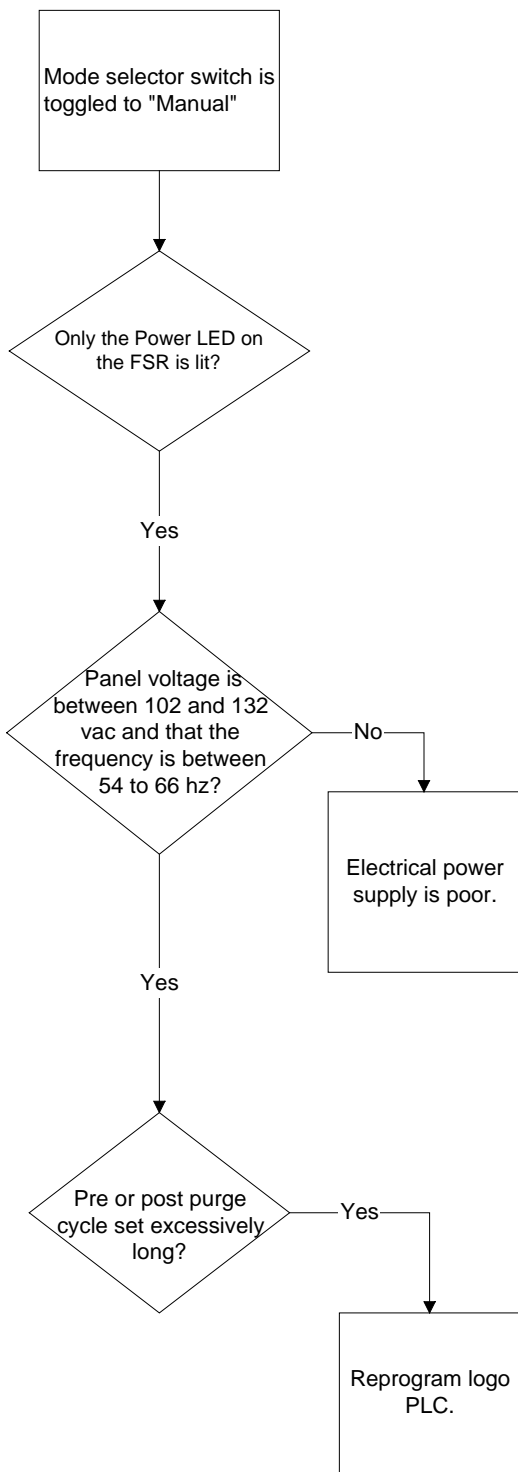
# HELLFIRE Models 900 and 900 2005 Gas Fired Switch Heater Troubleshooting Aid Flowchart

## **STARTS FOLLOWED BY SAFETY SHUTDOWN**

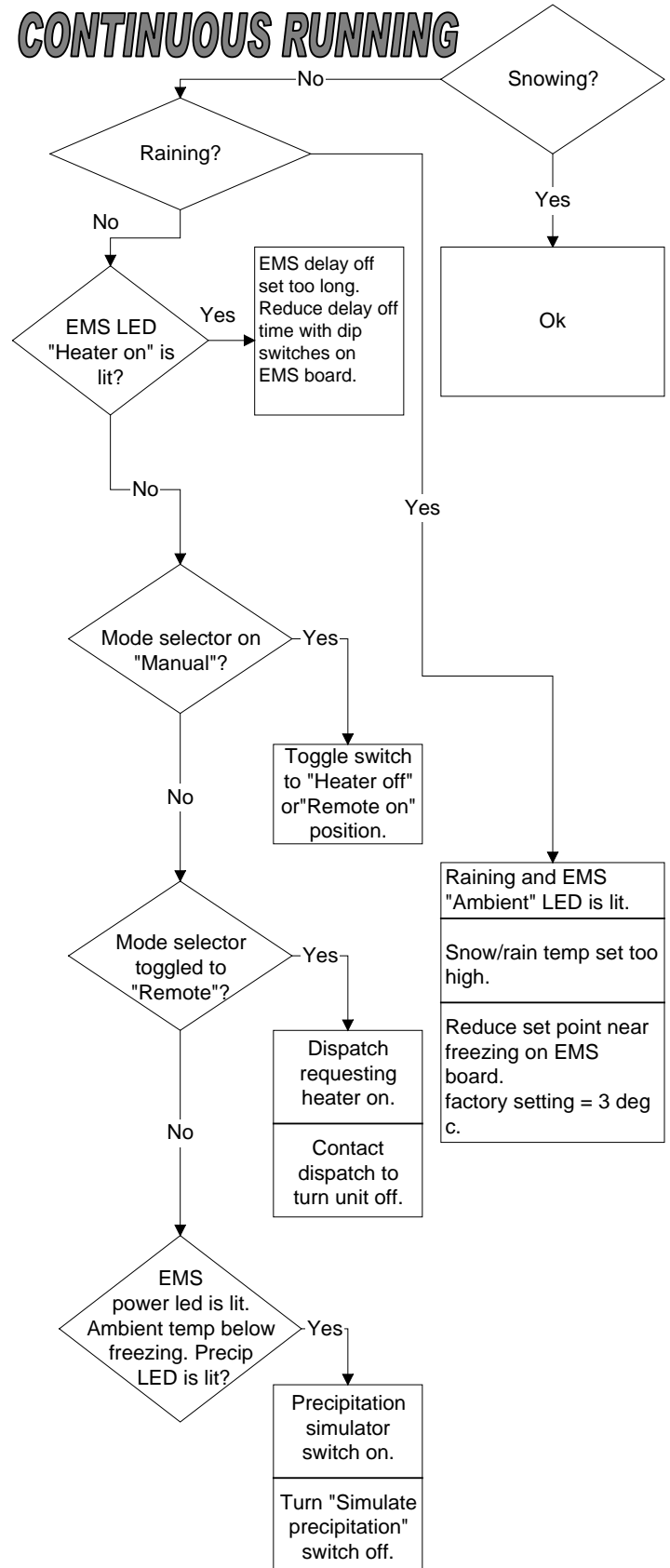


# HELLFIRE Models 900 and 900 2005 Gas Fired Switch Heater Troubleshooting Aid Flowchart

## FAN RUNNING, NO HEAT



## CONTINUOUS RUNNING



## HELLFIRE Models 900 and 900 2005 Gas Fired Switch Heater Troubleshooting Aid Flowchart

These flowcharts are intended as a guide only. Therefore it does not include all possible failures and solutions.

Personnel carrying out the troubleshooting are to be familiar with the equipment and its normal operation.

The scenarios and information presented are in a simplified format to aid overall understanding.

Further details are available in the applicable original operators manual supplied with the heater.

Hovey recommends that regular inspections be carried out following "Switch Heater Inspection Guide" Hovey part number 11760.

### **WARNINGS**



**All persons employed in handling propane or natural gas shall be trained in proper handling and operating procedures, as required by local authorities having jurisdiction.**



**Gas leaks shall be repaired immediately or, gas supply valve closed until repairs can be made.**



**Perform inspection and operation in accordance with the instructions provided by the specific equipment operators' manual.**