



Troubleshooting Golf Irrigation Products



Install Confidence.® Install Rain Bird®
Golf Irrigation Products.



Golf course irrigation systems operate in a dynamic and challenging environment. There are many things that can affect the performance of the system. This Troubleshooting Guide is designed to assist you in finding solutions for performance challenges that may randomly affect Rain Bird® golf irrigation products.

Please Note: As more troubleshooting procedures become available, simply add to the ring for a quick reference, whenever a solution to a product challenge is required.

For additional information about the troubleshooting procedures included in this guide — or — for answers to any of your questions at any time — contact Rain Bird Technical Service at (800) 247-3782.





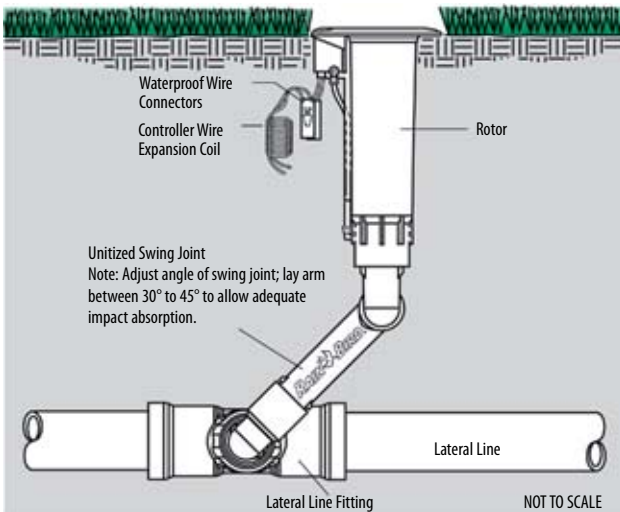
Rain Bird® Golf Rotors

The EAGLE™ Gear-drive Rotors from Rain Bird prove that advanced technology can have practical applications. EAGLE Rotors are designed to work right out of the box and keep on working. Closed-case EAGLE Rotors have become the choice for golf course professionals who demand superior reliability, debris-resistance, labor-saving maintenance, uniform water distribution and versatility.

Every rotor in this EAGLE lineup is designed with the features that allow unquestioned performance in meeting the rigorous demands of any golf course layout.

- EAGLE™ Wireless
- EAGLE™ 705/755 Wind Tolerant
- EAGLE™ 1100/1150
- EAGLE™ 900/950
- EAGLE™ 700/750
- EAGLE™ 500/550
- EAGLE™ 351B

Construction Detail Drawing



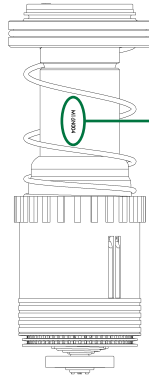


Rotor Date Codes

If you need to contact Rain Bird with a rotor question, you will need the DATE CODE of the rotor in question. The DATE CODE will tell the Rain Bird Representative when the rotor was manufactured.

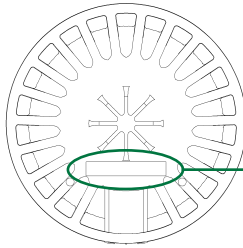
Date Codes can be found in three locations:

1. **The Internal** — a six or seven digit number will be stamped into the side of the riser.



Example: M16NO04
Read As: NOV 16, 2004

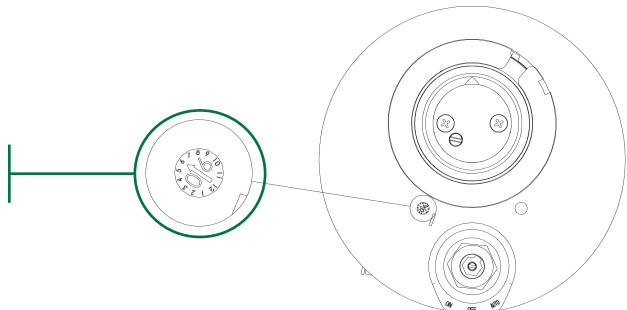
2. **The Valve** — the date and time the assembly was manufactured is printed on top of the valve bonnet.
(The time will not be important to report.)

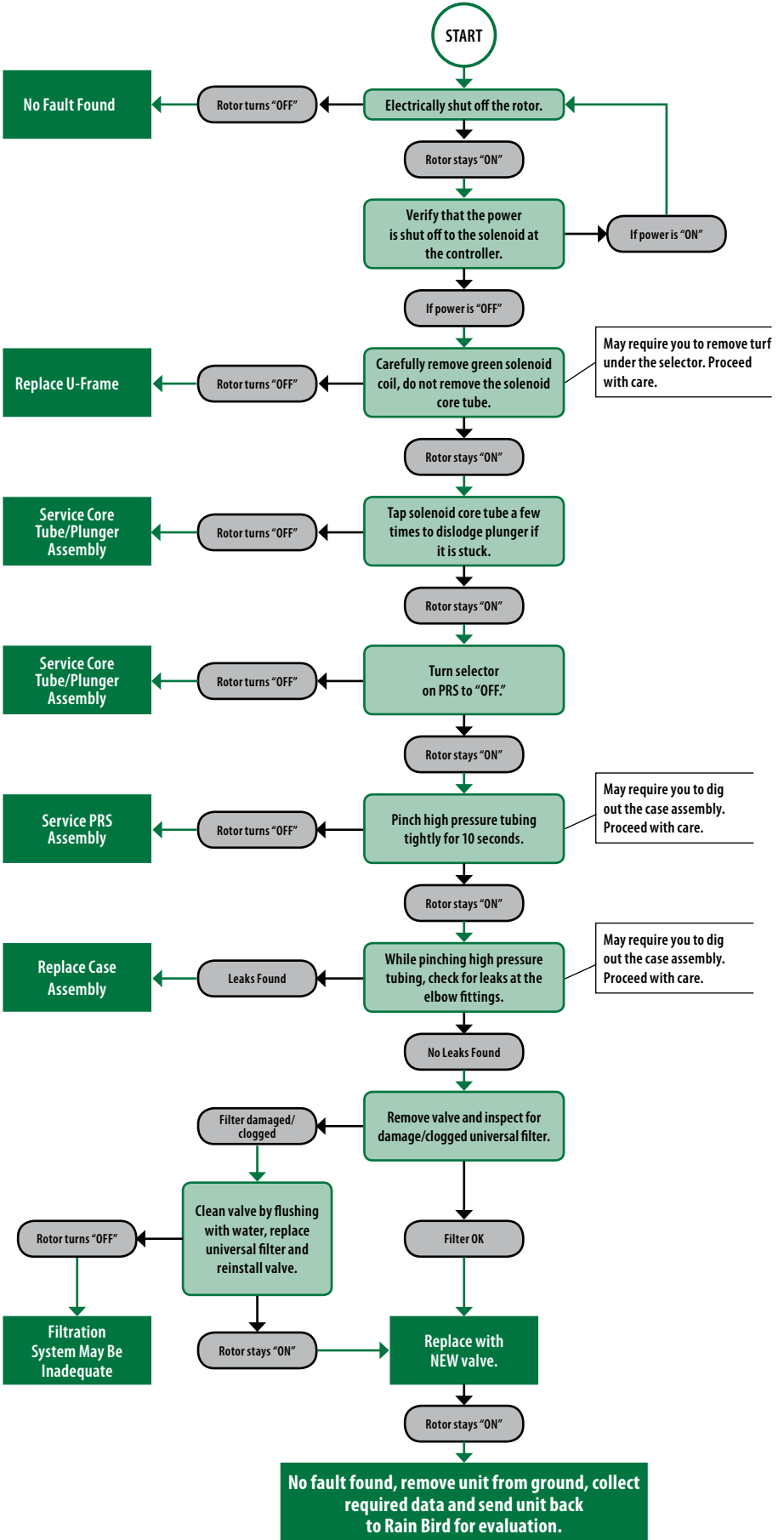


Example: 4/22/05
01:53AM
Read As: April 22, 2005

3. **The Case Assembly**

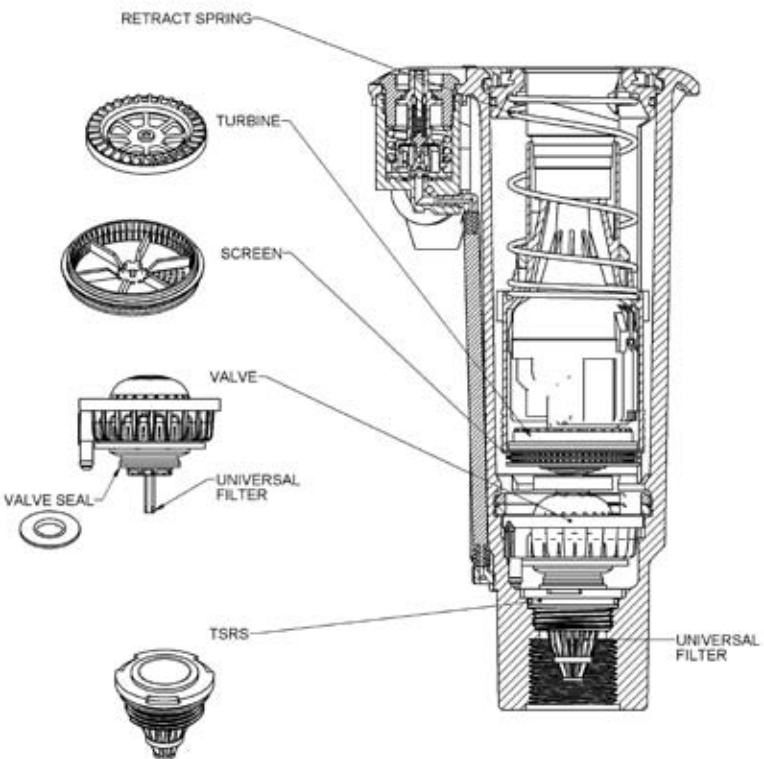
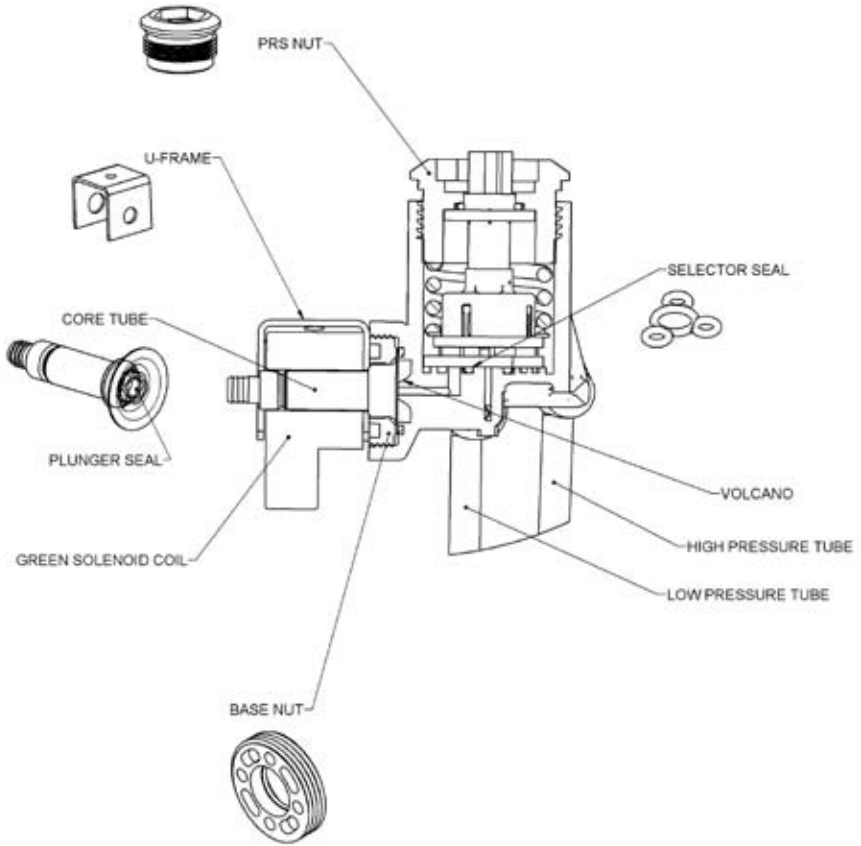
Example: 606
Read As: June 2006

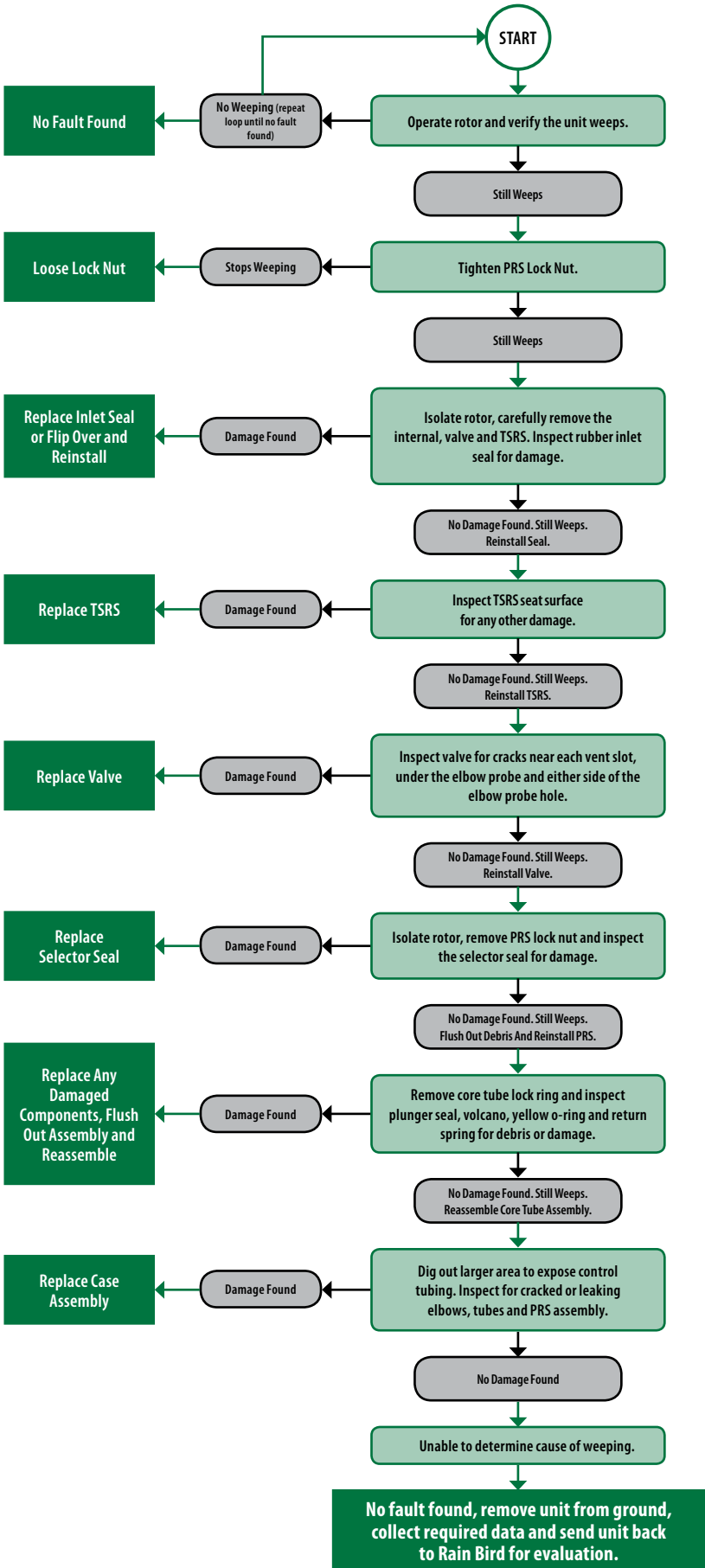






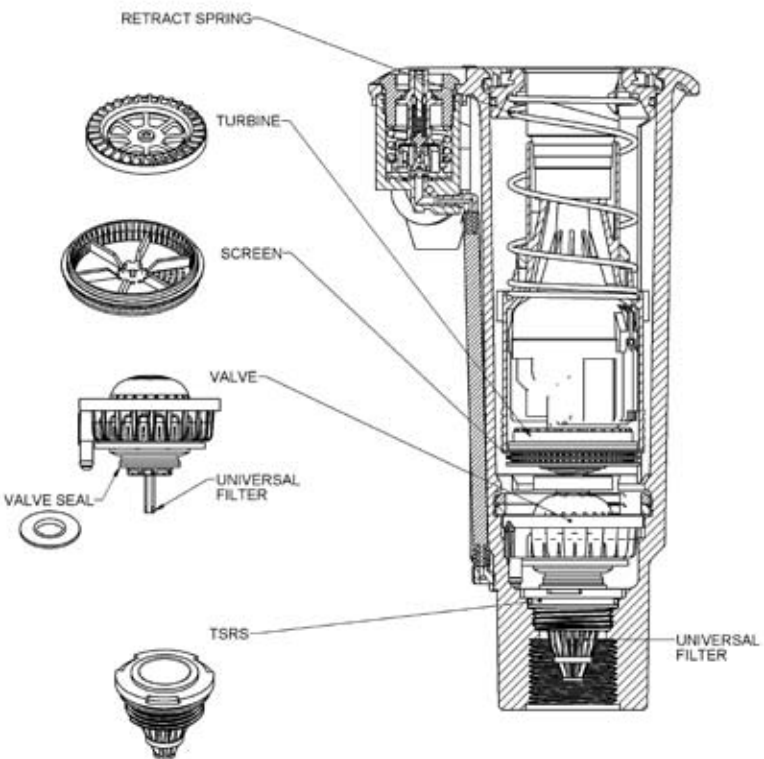
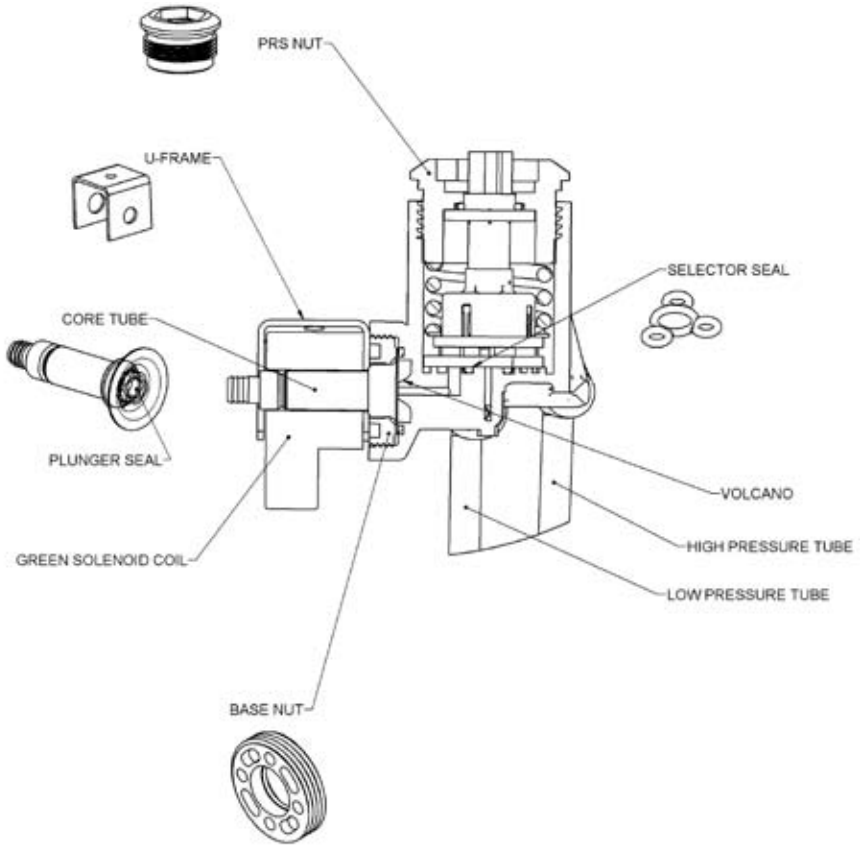
Rotor Components







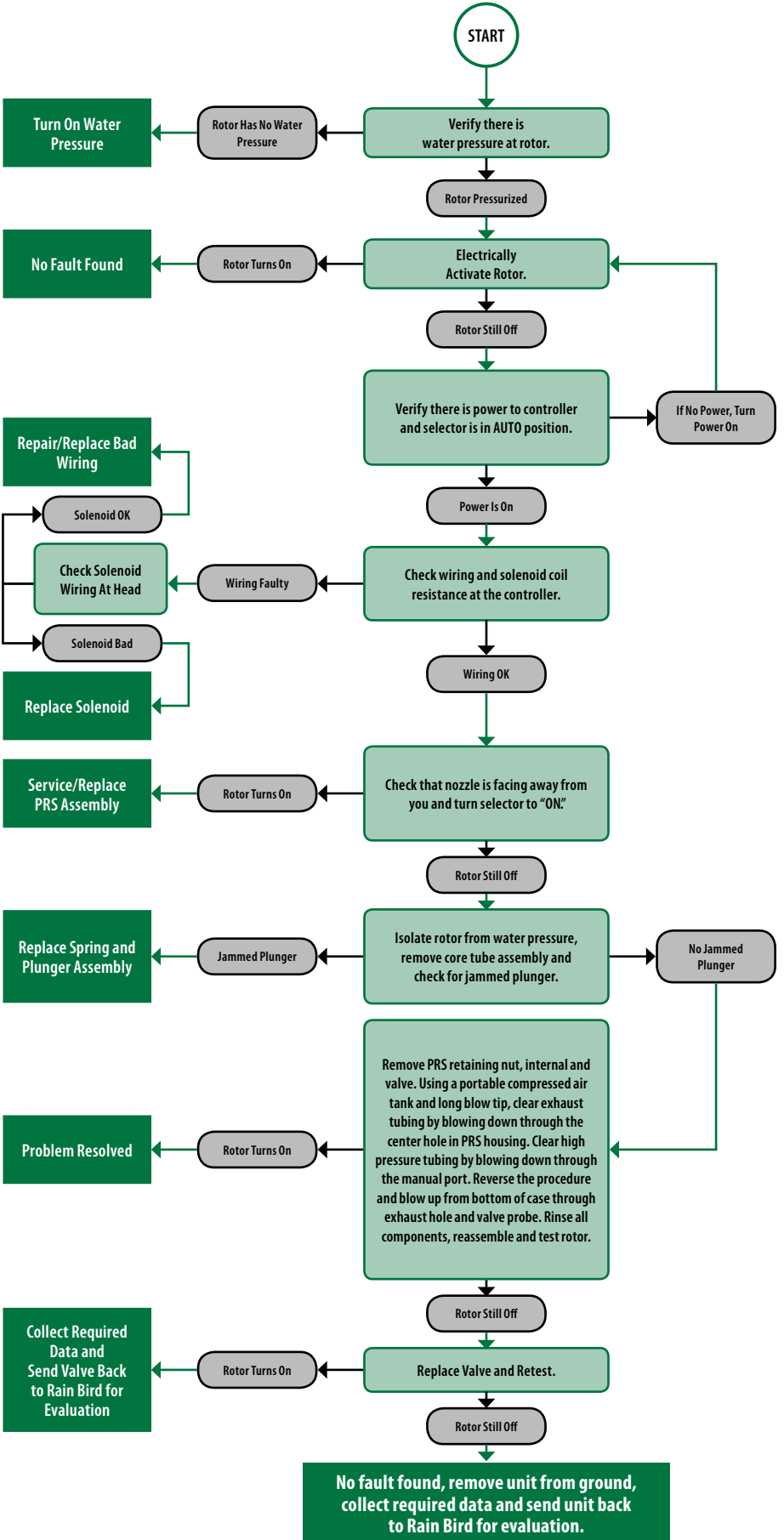
Rotor Components



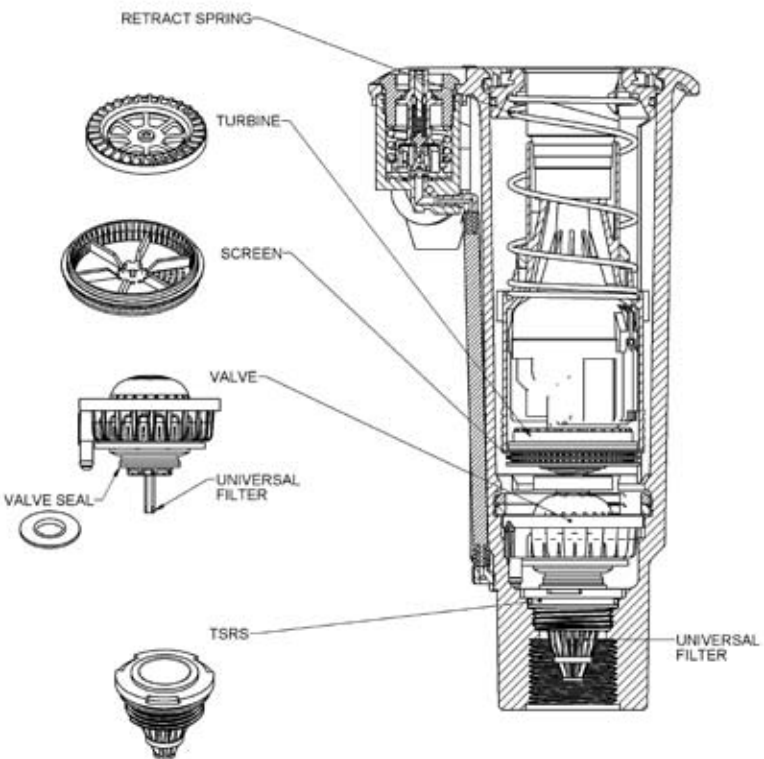
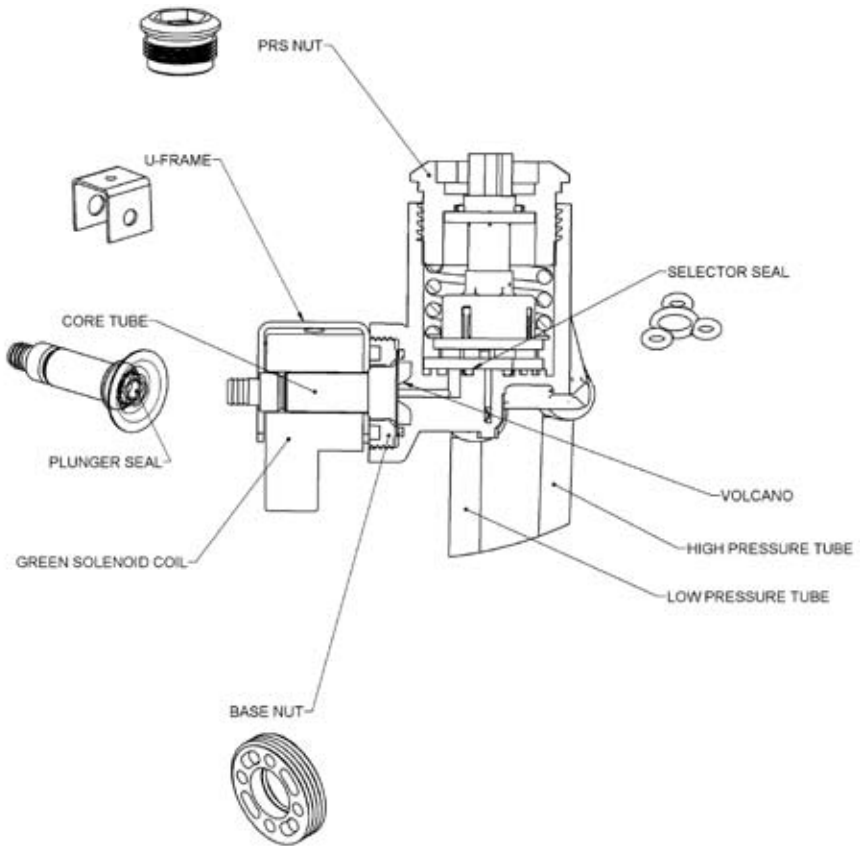


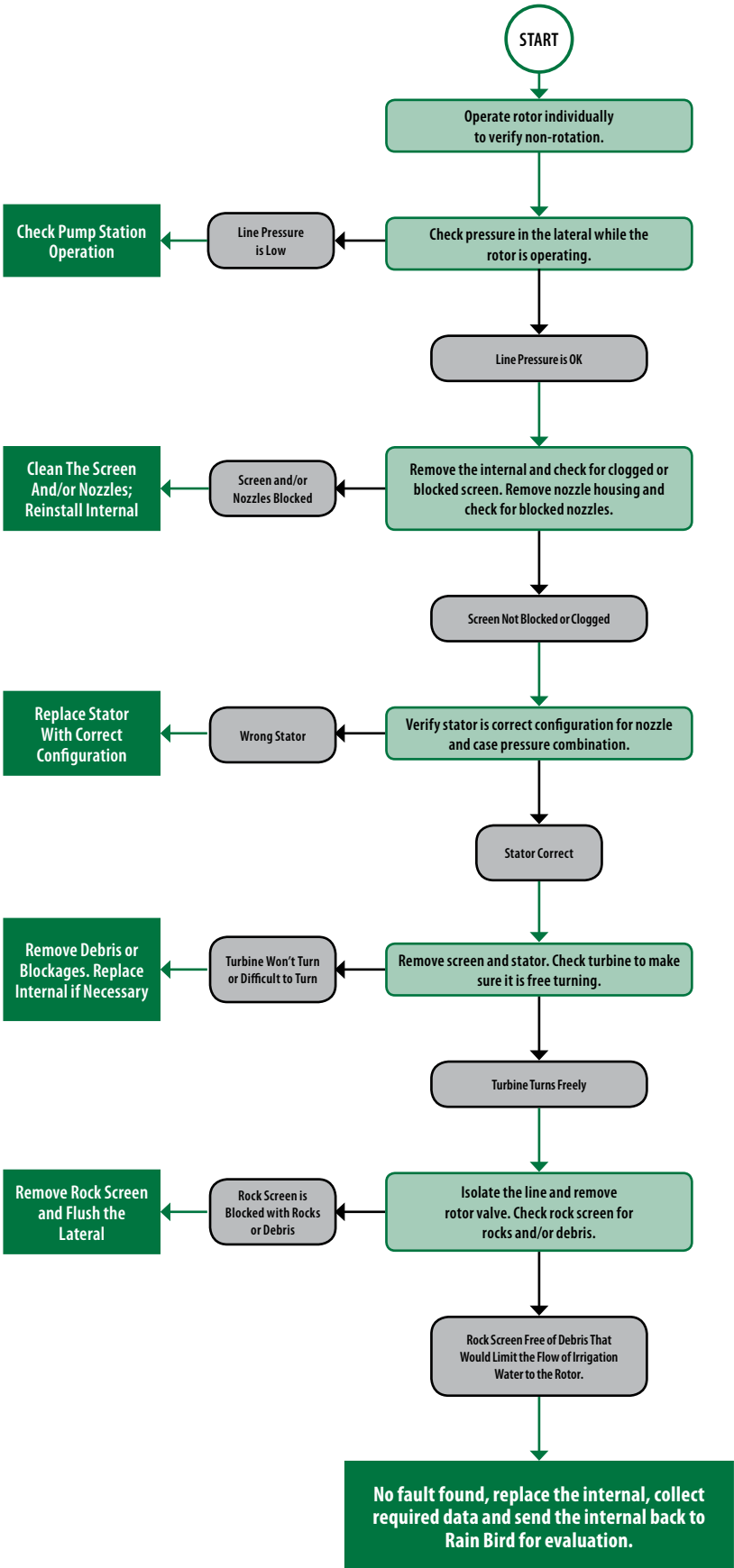
Recommended Rain Bird®
Troubleshooting Procedure for

“Won’t Turn ON”
EAGLE™ Rotor



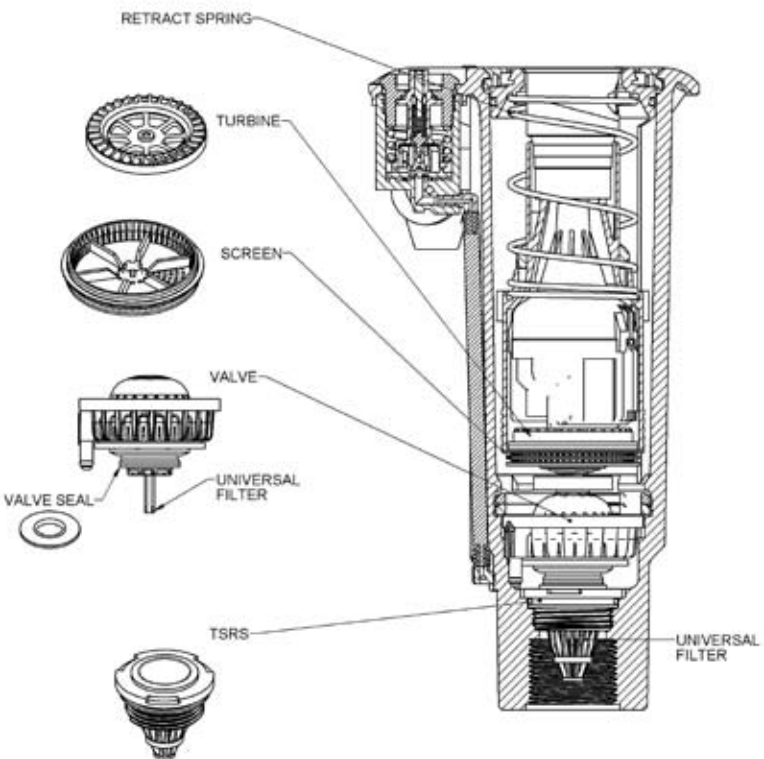
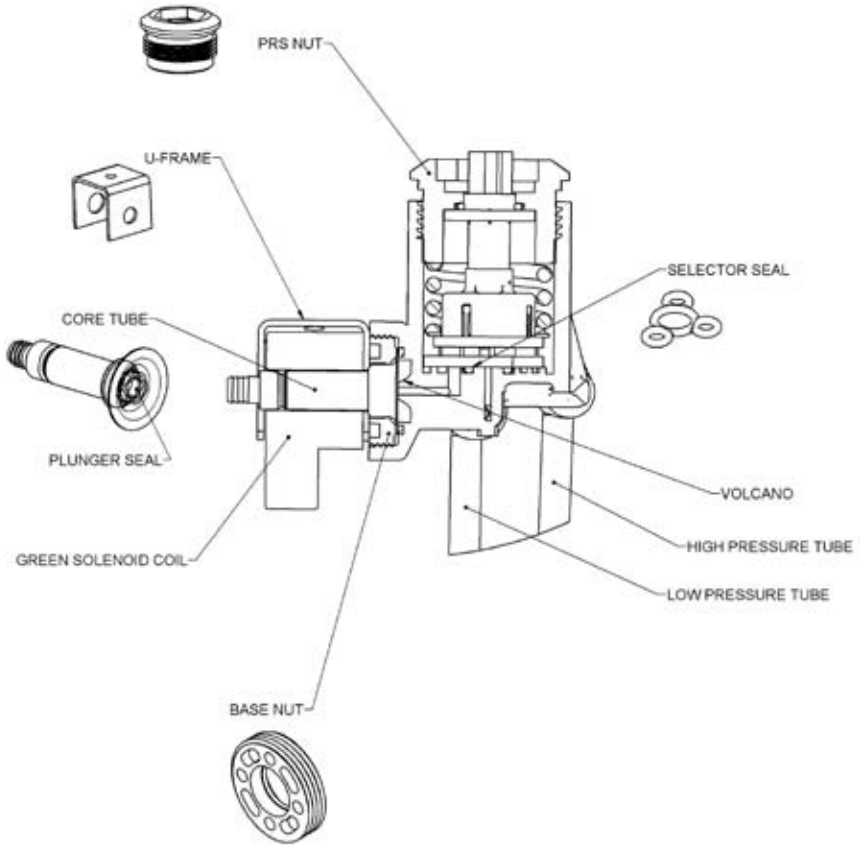
Rotor Components







Rotor Components





Suggested Tool List

Before initiating the troubleshooting process, it is suggested that you have the following tools with you:

- Flat Blade Screwdriver
- Philips Screwdriver
- Valve Removal Tool
- Valve Insertion Tool
- Selector Service Tool/Key (Orange Tool)
- Spray Bottle Filled with Fresh Water
- Padded Vice-Grip

The Intelligent Use of Water™

At Rain Bird, we believe it is our responsibility to develop products and technologies that use water efficiently. Our commitment also extends to education, training and services for our industry and our communities.

The need to conserve water has never been greater. We want to do even more, and with your help, we can. Visit www.rainbird.com for more information about The Intelligent Use of Water.™



Rain Bird Corporation

6991 East Southpoint Road
Tucson, AZ 85706, U.S.A.
Phone: (800) 984-2255; (520) 741-6100
Fax: (520) 741-6522
Email: rbgolf@rainbird.com

Rain Bird International, Inc.

P.O. Box 37
Glendora, CA 91740-0037, U.S.A.
Phone: (626) 963-9311
Fax: (626) 852-7343

Technical Service and Support

(800) RAINBIRD (U.S. and Canada only)

www.rainbird.com