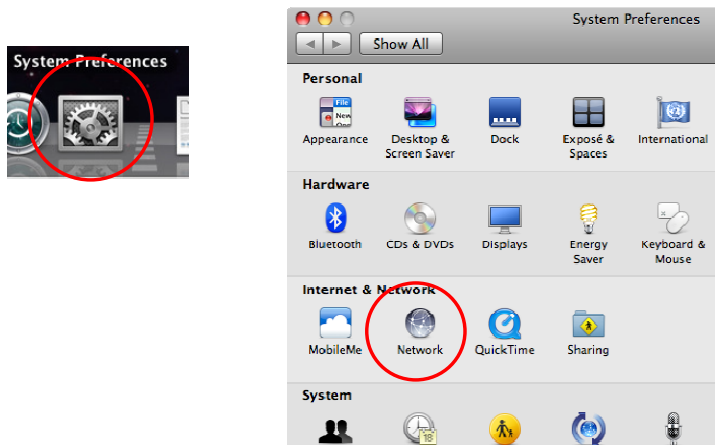
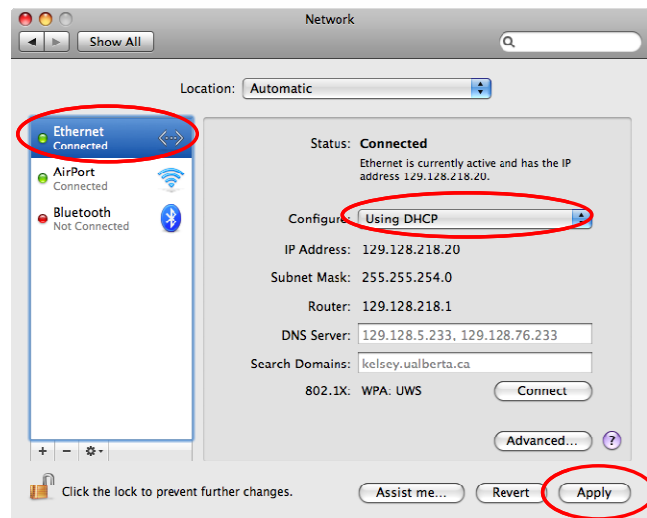


OSX Troubleshooting Guide

- 1) Open the **System Preferences** and select **Network**



- 2) Select the **Ethernet** connection, and make sure the selection to Configure: **Using DHCP** is selected and press **Apply**.

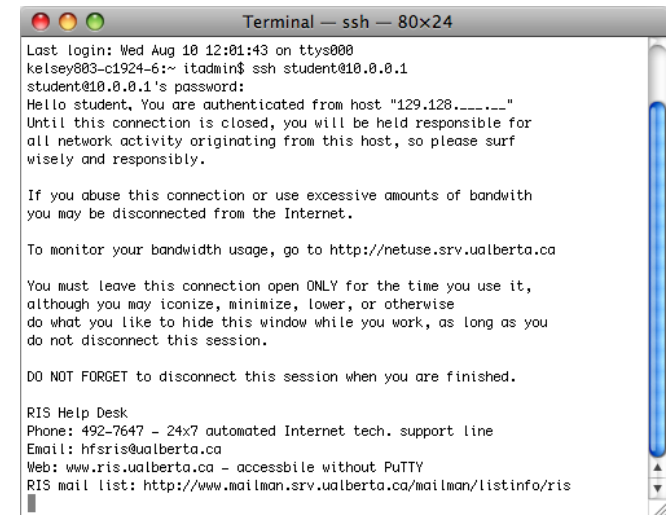


Residence Internet Service
Email: hfsris@ualberta.ca Phone: (780) 492-7647 Website: <http://www.ris.ualberta.ca>

- 3) In the **Utilities** (which can be accessed by pressing **⌘-U** while in **Finder**) launch **Terminal**.



- 4) To Authenticate enter the command **ssh student@10.0.0.1** you will then be prompted to type your password. **(Type your CCID (Campus Computing ID) in place of 'student')**
- Your password will not appear as you type it



Residence Internet Service
Email: hfsris@ualberta.ca Phone: (780) 492-7647 Website: <http://www.ris.ualberta.ca>