



# Reader User Guide

## ISO-7000 Series *"The Stocky"*

ISO-7000  
ISO-7000BT  
ISO-7020  
ISO-7020BT

Standard Unit  
Standard Unit with Bluetooth  
With RFID Counter  
With RFID Counter and Bluetooth

Including  
Aleis DataLink

Version 1.1 – 19/05/2010

### **IMPORTANT!**

**This User Guide must be read in conjunction with Reader, prior to use.**

©Copyright Aleis Pty Ltd 2010



A1064AUS

**Aleis Pty Ltd**

ACN 130 754 826

**www.aleis.com Ph: 07 46685942**



## Table of Contents

<b>Regularity Notices and Conformity</b> .....	<b>4</b>
<b>1.0 ISO7000 Series Reader Instructions</b> .....	<b>5</b>
<b>2.0 "The Stocky" Series</b> .....	<b>6</b>
<b>3.0 Connecting "The Stocky" to scale indicators or computers</b> .....	<b>6</b>
3.1 Connecting to scale indicators .....	6
3.2 Connecting to computers .....	7
3.3 Interface protocol .....	7
<b>4.0 "The Stocky" Keypad explained</b> .....	<b>8</b>
<b>5.0 Operating "The Stocky"</b> .....	<b>9</b>
5.1 Turning "The Stocky" on .....	9
5.2 Reading RFID devices with "The Stocky" .....	9
5.3 Storing RFID devices in "The Stocky" .....	9
5.4 Using Sessions in "The Stocky" .....	9
5.5 Clearing Sessions in "The Stocky" .....	10
5.6 Using the RFID Counter on "The Stocky" .....	10
5.7 Using Bluetooth in "The Stocky" .....	10
5.8 BlueTooth PIN code .....	10
5.9 Programming the Bluetooth .....	11
<b>6.0 Audio and Visual Alerts</b> .....	<b>13</b>
<b>7.0 Battery Charging</b> .....	<b>14</b>
7.1 Battery Charging Requirements .....	14
7.2 Battery Charging Tips .....	15
<b>8.0 ISO7000 Series Specifications</b> .....	<b>16</b>
<b>9.0 Aleis DataLink Software</b> .....	<b>17</b>
9.1 Aleis DataLink Installation .....	18
9.2 Aleis DataLink Operation .....	18
9.3 Aleis DataLink Menu Screen .....	19
9.4 Producer Transfer (Australia Only) .....	20
9.5 3 <sup>rd</sup> Party Transfer (Australia Only) .....	23
9.6 Retrieve Tag Bucket (Australia Only) .....	26
9.7 Tag Replacement (Australia Only) .....	28
9.8 NLIS Upload Centre (Australia Only) .....	31
<b>10.0 Aleis Conditions of Sale</b> .....	<b>32</b>

## Regularity Notices and Conformity



### Information to the user (FCC Part 15.105)

This equipment has been tested and found to comply with the limits for a Class B digital device, pursuant to Part 15 of the FCC Rules. These limits are designed to provide reasonable protection against harmful interference in a residential installation. This equipment generates, uses and can radiate radio frequency energy and, if not installed and used in accordance with the instructions, may cause harmful interference to radio communications. However, there is no guarantee that interference will not occur in a particular installation. If this equipment does cause harmful interference to radio or television reception, which can be determined by turning the equipment off and on, the user is encouraged to try to correct the interference by one or more of the following measures:

- Reorient or relocate the receiving antenna
- Increase the separation between the equipment and receiver
- Connect the equipment into an outlet on a circuit different from that to which the receiver is connected
- Consult the dealer or an experienced radio/TV technician for help

### Modification warning (FCC Part 15.21)

Warning: Any changes or modifications not expressly approved by Aleis could void the user's authority to operate this equipment.



This Class B digital apparatus complies with Canadian ICES-003.  
Cet appareil numérique de la classe B est conforme à la norme NMB-003 du Canada.



This device has been tested and meets the Electromagnetic Compatibility requirements for EN300 330



This device has been tested and meets the Electromagnetic Compatibility requirements for CISPR 11

## Antenna Warning

This device has been designed to operate with the antennas listed below. The ISO7000 Series Readers are only approved with the detachable antennas below. In accordance with RSS-GEN Issue 2 June 2007 Section 7.1.4 and FCC Part 15.21, antennas not included in this list are strictly prohibited for use with this device.

Aleis Part Number	Antenna Housing Length	Antenna Description
0300(1P)	300mm	200mm Ferrite rod antenna
0500(1P)	500mm	200mm Ferrite rod antenna
1000(1P)	1000mm	200mm Ferrite rod antenna
1500(1P)	1500mm	200mm Ferrite rod antenna
2000(1P)	2000mm	200mm Ferrite rod antenna
2500(1P)	2500mm	200mm Ferrite rod antenna

## Important User Instructions

### 1.0 ISO7000 Series Reader Instructions

# **IMPORTANT**

**Must be read prior to using system**

## ***"The Stocky" ISO7000 Series Model Handling Instructions***

The following instructions must be wholly adhered to or permanent damage to the antenna/reader and/or permanent data loss can occur. Non-conformance to the handling and operating instructions will immediately void all warranties for the antenna/reader and software.

1. For maximum performance, batteries need to be charged before use.
2. Charge for 24 hours for 1<sup>st</sup> initial charge.
3. Aleis suggests a form of transient protection unit be used while charging the reader to help prevent power surges/spikes.
4. Do not hose or submerge *"The Stocky"* in water.
5. Use only a very lightly dampened cloth to clean *"The Stocky"*.
6. Do not use chemicals to clean *"The Stocky"*.
7. Do not use *"The Stocky"* as a prodder or as any form of a cattle motivator.
8. Do not drop *"The Stocky"* as electronics are contained within.
9. Do not remove any VOID stickers from *"The Stocky"*.
10. Do not drill holes in *"The Stocky"*.
11. Aleis Conditions of Sale apply.

## 2.0 *"The Stocky"* Series

*"The Stocky"* is available in different configurations (See Below)

ISO7000	Standard Unit
ISO7000BT	Standard Unit with BlueTooth
ISO7020	With RFID Counter
ISO7020BT	With RFID Counter and BlueTooth



## 3.0 Connecting *"The Stocky"* to scale indicators or computers

### 3.1 Connecting to scale indicators

*"The Stocky"* comes with a 3 metre computer cable. Plug the 9 pin lead into *"The Stocky"* and into the scales serial port. *"The Stocky"* must be in serial mode if Bluetooth is fitted. To select a serial connection press and hold down the NEW SESSION button and then press the ON button. The Bluetooth LED will go out.

2 beeps are heard if Bluetooth is enabled or 3 beeps if Serial is enabled.

*"The Stocky"* will automatically send each RFID you read to the connected scale indicator. You may need to contact your scale indicator manufacturer for specific setup requirements on the indicator.

You may also connect your reader to the scale indicator via Bluetooth if you have an ISO7000BT or an ISO7020BT. The scale indicator must be able to support Bluetooth connection. Contact the scale indicators manufacturer for further details.

### 3.2 Connecting to computers

*"The Stocky"* comes with a 3 meter computer cable. Plug the 9 pin lead into *"The Stocky"* and into the computers serial port. *"The Stocky"* must be in serial mode if Bluetooth is fitted. To select a serial connection press and hold down the NEW SESSION button and then press the ON button. The Bluetooth LED will go out. 2 beeps are heard if Bluetooth is enabled or 3 beeps if Serial is enabled.

*"The Stocky"* will automatically send each RFID you read to the connected computer. You may need to contact your herd management software provider for specific setup requirements for your respective software package.

The ISO7000BT and ISO7020BT can be connected to a PC or other device via Bluetooth. Refer to Using Bluetooth further on in this Manual.

If you are using the download software program (Aleis DataLink) supplied with *"The Stocky"*, you will simply need to plug the reader into your computer, double click on the DataLink icon on your desktop, and the program will automatically connect and download *"The Stocky"* for you. The reader must be in serial mode.

### 3.3 Interface protocol

You may be asked by the scale indicator manufacturer or your herd management software provider for the interface protocol of the *"The Stocky"*. This term refers to the way the reader talks to the scale indicator or software program. The protocol for *"The Stocky"* is as follows:

- Baud rate: 9600
- Data bits: 8
- Parity: None
- Stop bits: 1
- Communication: Serial

*"The Stocky"* will read all functioning NLIS approved HDX devices.

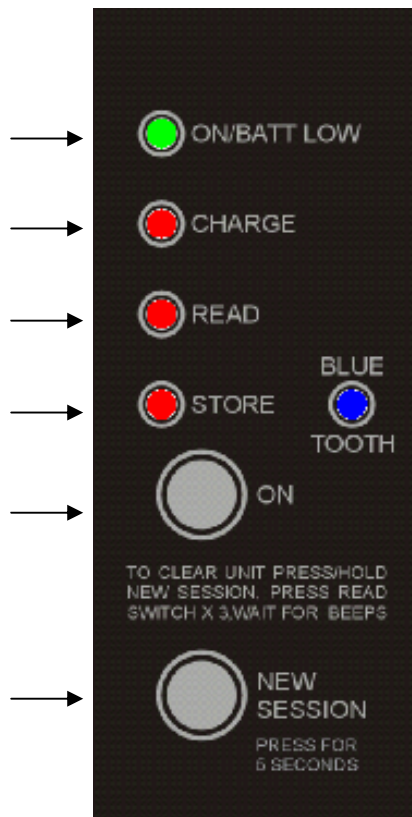
All ID data from the reader is in ASCII format and has a <CR><LF> attached to the end of each string.

**An actual example of the above number is: A 00000 0 0971 000000002724<CR><LF>**

#### 4.0 "The Stocky" Keypad explained

If you have a ISO7000 or ISO7020 the Bluetooth LED will not be fitted. It's only fitted on the ISO7000BT & ISO7020BT models

- This LED comes on when the reader is turned on and flashes when the battery charge is low.
- This LED comes on when the reader is being charged.
- This LED flashes once when an RFID has been read.
- This LED flashes once when an RFID has been stored in the reader's memory.
- Press this button to turn the reader on.
- Hold this button down for five seconds to create a new session on the reader. If you want to clear the reader, hold this button down and press the read button (the button on the wand) three times. Hold this button down while pressing the ON button to toggle between Serial Connection and BlueTooth



This LED comes on when Bluetooth is fitted and turned on.

**ISO7000BT KEYPAD**



## 5.0 Operating *"The Stocky"*

### 5.1 Turning *"The Stocky"* on

Press the ON button on the reader to turn *"The Stocky"* on. The system will remain on for 1 minute and 15 minutes if Bluetooth turned on.

**Note:** 2 beeps are heard if Bluetooth is enabled or 3 beeps if Serial is enabled. The unit is also turned on by pressing the Read switch on the wand (located at the top of the handle). The Unit will power down after 6 seconds for non Bluetooth models. This feature is a battery conservation feature and assists in long term use in the yards without charging.

### 5.2 Reading RFID devices with *"The Stocky"*

To read RFID ear tags, press the read button and wave the wand past the ear tag. The read range of *"The Stocky"* is generally between 380mm and 420mm from the end of the wand.

To read RFID rumen pellets or boluses, press the read button and wave the wand in an 'L' shape behind the front leg of the animal. As mentioned in the above paragraph, the read range of *"The Stocky"* is generally between 380mm and 420mm from the end of the wand.

### 5.3 Storing RFID devices in *"The Stocky"*

*"The Stocky"* automatically stores each RFID device it reads. This is indicated by the Store light flashing when an RFID is first read. *"The Stocky"* will not store the same device twice in the same session nor alter the order of the RFIDs in the reader if a device is read a second time. The RFIDs are stored in the same order they are read. *"The Stocky"* will store 10,000 RFIDs in its memory.

### 5.4 Using Sessions in *"The Stocky"*

Sessions have been designed into the memory of *"The Stocky"* to allow for easy separation of groups of cattle. To start a new session in *"The Stocky"*, simply hold the 'New Session' button down for five seconds, and you will hear *"The Stocky"* beep three times and the Read and Store lights will flash in sync with the beeps.

You can store up to 4,000 RFIDs in one session – if you read more than 4,000 RFIDs, *"The Stocky"* will automatically create a new session.

You can have up to 1,000 sessions in *"The Stocky"*.

## **5.5 Clearing Sessions in "The Stocky"**

You can clear "The Stocky" from the keypad. To do this hold down the New Session button and press the read switch 3 times. When "The Stocky" is cleared a long beep will be heard.

**NOTE:** Once the unit is cleared the session(s) data is not recoverable.

## **5.6 Using the RFID Counter on "The Stocky"** (On ISO7020 & ISO7020BT models only)

On the ISO7020 & ISO7020BT models the RFID Counter is located on the side of the unit above the computer/charger connection.

The RFID Counter counts the number of devices read in the current session. When you create a New Session the RFID Counter resets back to 0. It also resets to 0 when you clear the unit.

## **5.7 Using Bluetooth in "The Stocky"** (On ISO7000BT & ISO7020BT models only)

To turn the Bluetooth on press and hold down the NEW SESSION button and then press the ON button. The Bluetooth LED will come on.

To return back to a serial connection repeat the above process. The Bluetooth LED will go out. 2 beeps are heard if Bluetooth is enabled or 3 beeps if Serial is enabled.

Notes:

1. The Bluetooth Feature is only available if you have a ISO7000BT or ISO7020BT model. If you don't your unit can be upgraded for this feature. Contact the supplier for further information and costing.
2. Bluetooth is a way you can communicate to a PC, PDA or other device without using the serial cable, referred to as a Wireless connection.
3. The PC or device that the ISO7000BT or ISO7020BT is going to communicate to must have Bluetooth fitted. The PC or device sets up the link between the two units.

## **5.8 BlueTooth PIN code**

The Pin Code or access code, as it is sometimes referred to, is the 4 digit serial number on the side of the ISO7000BT or ISO7020BT.

If the sticker is missing when you discover the ISO7000BT or ISO7020BT on the PC or device, the 4 digit number which comes up in the name of the ISO7000BT or ISO7020BT discovered is the pin number.

Refer to your PC or other devices manual to see how to discover and connect to a Bluetooth device.

## 5.9 Programming the Bluetooth

To program the Bluetooth it must be in Configuration mode.

Make sure the 7000 series is in Serial mode.

Connect the Bluetooth programming lead between the serial cable and the reader.

Press and hold the "Read switch" then press the "ON switch". Now release the Read Switch. The Bluetooth Light should flash rapidly. This is now in Bluetooth configuration mode.

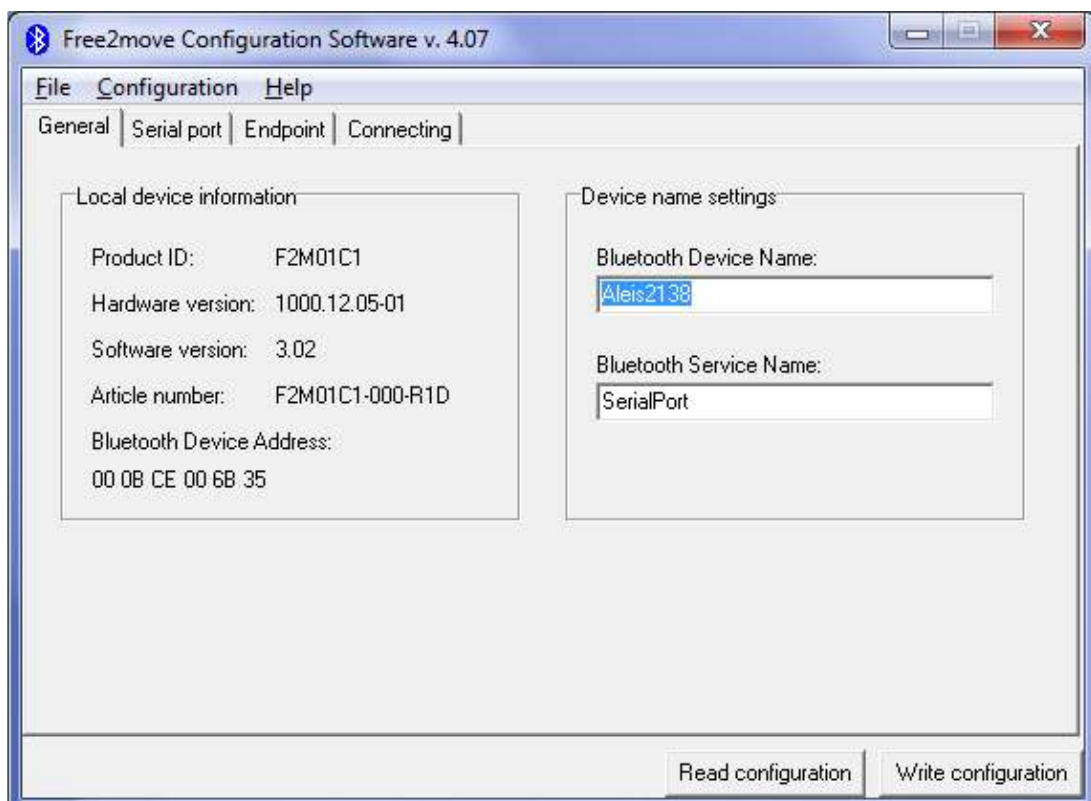
Then you must use the Free2Move Configuration Software. This can be found on the DataLink CD or on our Web site [www.aleis.com](http://www.aleis.com)

Once you are connected you can change the configuration of your Bluetooth.

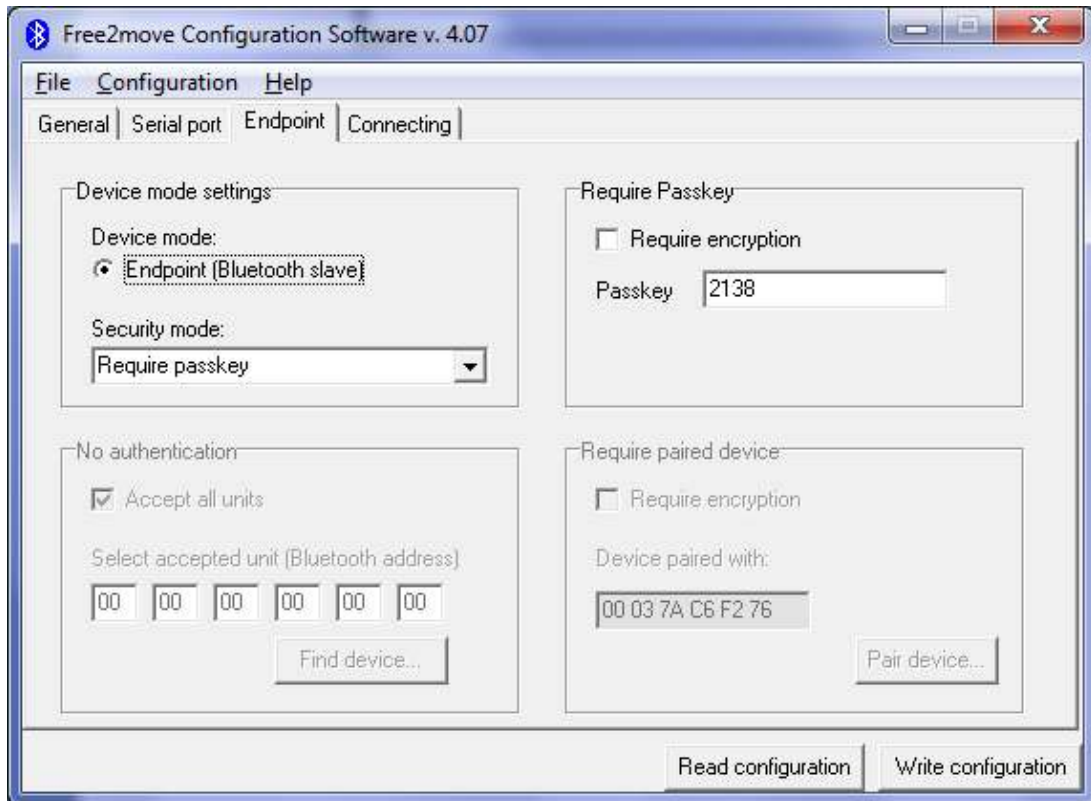
After you have finished reprogramming the Bluetooth just press the "ON Switch" to Revert back to Normal.

Some of the settings you may wish to change are the following.

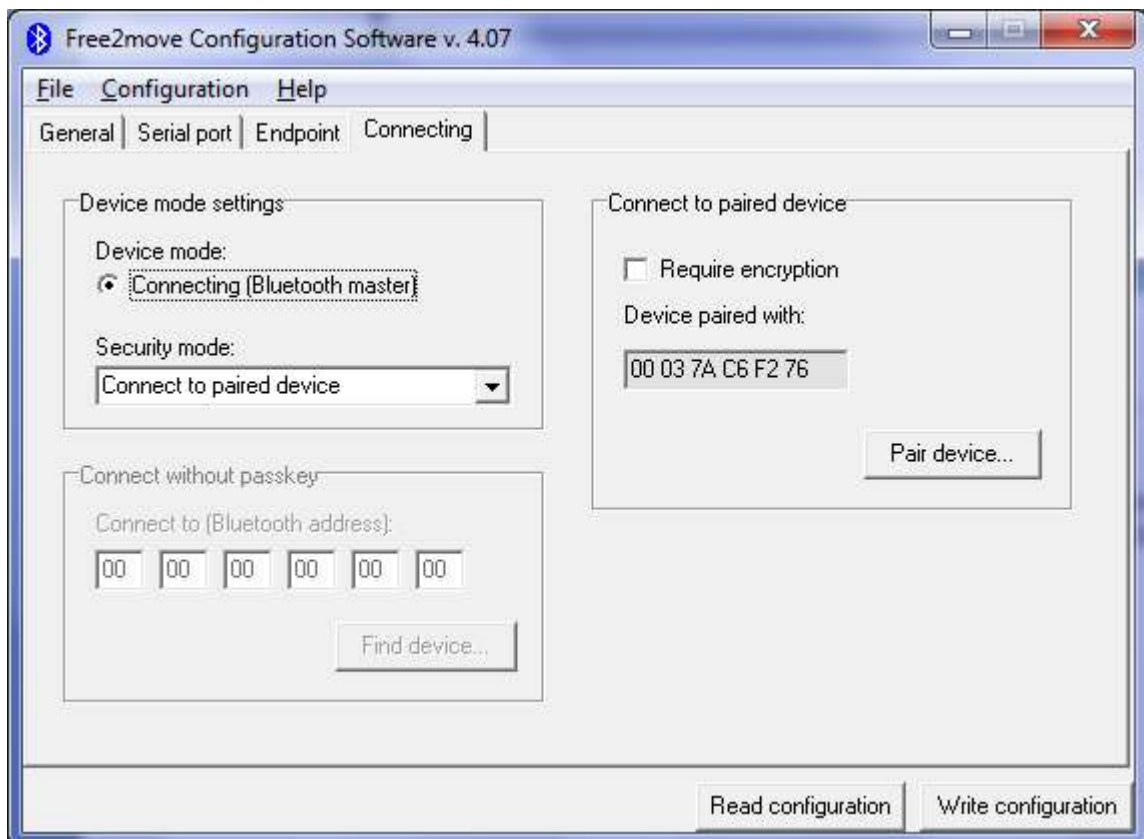
1. Bluetooth Device name in general setting.



2. The Pass Key in the Endpoint setting.



3. Change the Device mode from Slave to Master. Below are the Connecting setting for a master. When you have change it to a Master you can then Pair to a device such as a scale head with built in BlueTooth.



## 6.0 Audio and Visual Alerts

This is a summary of the Audio and Visual Alerts used in "The Stackey":

Features	Buzzer	On/Batt Low LED	Charge LED	Read LED	Store LED	BlueTooth LED
Reader is on	3 rapid beeps on power up	On				
RFID is read and stored	2 beeps	On		1 flash	1 flash	
RFID is read and has already been stored	1 beep	On		1 flash		
RFID has not been read	1 long beep	On				
New session has been created	4 beeps	On		4 flashes	4 flashes	
Reader has been cleared	1 long beep	On		1 long flash	1 long flash	
Reader is downloading RFIDs		On		On		
Battery charge is low*	2 rapid beeps every minute during use	Flashing				
Reader memory is full		On			On	
Charger has been plugged in to the reader (fast charging)		Slowly flashing	On			
BlueTooth Switched on	2 rapid beeps on power up	On				On
Memory Store Error (Return Unit to Aleis)	10 rapid beeps	On				

\* If you continue to use "The Stackey" when the battery is low, once it gets below 6.0 volts, "The Stackey" will beep three times and turn off.

## 7.0 Battery Charging

The batteries in *"The Stocky"* can be charged by using the 9-pin connector at the back of the reader.

### 7.1 Battery Charging Requirements

- Charge for 24 hours for 1<sup>st</sup> initial charge.
- For best results, charge prior to each use.
- To obtain maximum battery life, charge a minimum of every 10-12 weeks if reader is not being used.
- Due to the uneven supply of mains power, Aleis suggests a form of transient protection unit be used while charging the reader to help prevent power surges/spikes. Aleis sells this transient protector part number 4059.
- Charge *"The Stocky"* using supplied charger only.
- Ensure when fitting charger connector that the male and female groove are aligned and pushed in correctly.
- When *"The Stocky"* is charged, the On/Batt Low LED will be in one of two conditions:
  1. If battery has reached its Charged condition, the On/Batt Low LED will be on constantly (no flashing).
  2. If battery has reached its maximum charge time period, the On/Batt Low LED will flash three times rapidly constantly.
- The ON/Batt low led can indicate several states

Green Led:	On	= unit on
	Flashing on/off	= Battery low
	1 Flash	= Fast charging
	2 Flash	=Battery overtemp
	3 Flash	= Charge Timeout
	4 Flash	= Thermister error

\*Note: once *"The Stocky"* has reached one of the two states, the battery charger will trickle charge *"The Stocky"* for you until the charger is unplugged.

**DO NOT CHARGE *"The Stocky"* LONGER THAN 30 HOURS.**

## **7.2 Battery Charging Tips**

- To ensure that the battery receives a full charge, charge *"The Stocky"* overnight (5hrs).
- The battery does not have to be flat to be charged. It is recommended the *"The Stocky"* is charged before each use.
- If the unit is not used for a long period of time, recharge *"The Stocky"* overnight prior to use.
- To verify that the unit is charging, ensure the Charge LED on the reader is illuminated.

## 8.0 ISO7000 Series Specifications

<b>General</b>	
Frequency:	134.2Khz
RFID Compatibility:	ISO 11784 & 11785 HDX and FDX-B
User Interface:	RS-232 Serial Port/Bluetooth Option.
RS-232 Port:	9600bps, 8 Data Bits, No Parity, 1 Stop Bit.
RFID Code output:	Decimal
Antenna Tuning:	Auto
Memory:	10,000 Records in Non-Volatile RAM
Battery Power:	7.2 Volt DC NiMH
Agency Certifications:	USA - FCC Part 15.101, 15.209 Class B, Canadian - RSS-210, RSS-Gen, ICES-003 Europe - EN300-330, EN301-489, EN55011, EN55024 AS/NZS - CISPR 11

<b>Physical</b>	
Dimensions:	795 mm with standard 500mm wand
Weight:	1.2Kgs
Material:	Antenna- Fiberglass, Box- Polycarbonate
Operating Temperature:	-20c to +60c
Storage Temperature:	-40c to +85c
Humidity:	0 to 100%
Hermeticity:	IP67

<b>Performance</b>	
HDX:	>500mm using Allflex HDX/HP tag in best orientation.
FDX:	>400mm using Allflex FDX-B/HP tag in best orientation.
Read Rate:	Wireless Sync mode 9 times/second.
Read Error Rate:	less than 1 in 1 million.
Radiated Field Strength:	94.8 dBuV/m at 10 meters



# Aleis DataLink Software

## 9.0 Aleis DataLink Software

### **IMPORTANT**

*Must be read prior to using software*

This software has been purposefully designed to download the RFID's and/or respective data relating to those RFID's from the Aleis ISO7000 8030/50 and 9030/50/60 Series Readers. Aleis accepts no responsibility for any form of improper use, negligent or otherwise, resulting in the loss of RFID's with the use of this software. All practical assistance will be given in the operation and understanding of this software, and this can be obtained by contacting Aleis or an Aleis distributor. Copying of this software is strictly prohibited.

1. This software is designed for Aleis ISO7000 8030/50 and ISO9030/50/60 Series Readers ONLY.
2. Aleis Reader must be plugged into computer this software is installed on.
3. Aleis Reader must be turned ON before opening Aleis DataLink.
4. Aleis DataLink PC Requirements:

#### **Operating Systems**

- Windows ME
- Windows NT 4.0
- Windows 2000
- Windows XP (*Recommended*)
- Vista
- Windows 7

#### **Minimum Hardware**

- Pentium 233 MHz (*Recommended: Pentium 500MHz or greater*)
- 64 MB RAM (*Recommended: 128 MB RAM or greater*)
- 20 MB hard drive space

This software package serves as an easy download program which automatically downloads the reader's session list. Once the reader is downloaded, you can then save particular downloaded sessions or all downloaded sessions on your computer. You can then open these saved files in Excel or your desired program. The program also allows you to transfer animals on the NLIS database.

Special features include:

- Auto-detects what com-port reader is plugged into.
- Quick and easy animal transfers to the NLIS database for Producers and 3<sup>rd</sup> party users.
- Downloading all animal data from reader to excel.
- Loading tag file buckets from database to the reader.
- Updating readers software.
- Updates clock on reader to time displayed on computer. (For models that have clocks.)

## **9.1 Aleis DataLink Installation**

To install DataLink:

1. Place the DataLink CD into the CD drive; the program will automatically begin installation.  
If not Go to My Computer Double click on the CD Rom Drive Browse the CD and Double click on the icon called DataLink
2. Follow the installation prompts, and click on Finish when installation is complete.

## **9.2 Aleis DataLink Operation**

Operating Aleis DataLink:

**IMPORTANT:** The Aleis Reader *must be plugged securely into your computer and turned on* before opening Aleis DataLink.

### **1.0 Plugging the Aleis Reader into your computer.**

Plug the 9 pin female serial connector into the 9 Pin male serial connection at the back of your computer or laptop. Some laptops do not have a serial connection, and so a Serial to USB adaptor can be used. Should such an adaptor be used, Aleis DataLink works just as effectively provided you have installed the drivers for the adaptor correctly.

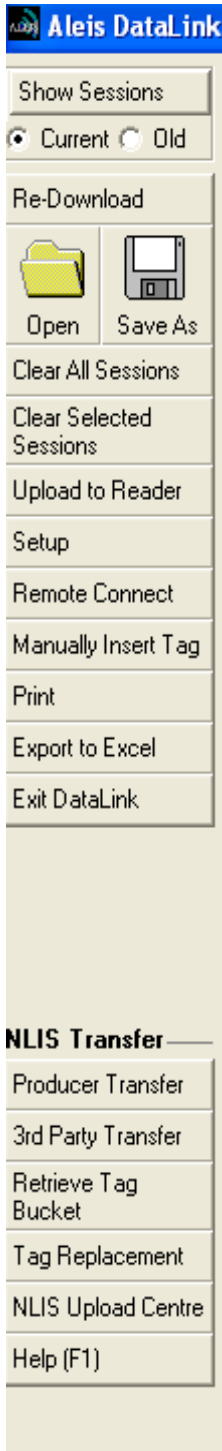
### **2.0 Opening Aleis DataLink.**

1. Turn Aleis Reader on
2. Double click on the Aleis DataLink icon located on your desktop.
3. This will open up the software for operation. As soon as the program is opened, it will automatically download the reader for you.

### 9.3 Aleis DataLink Menu Screen

Full Index for Help in software (F1)

#### Brief overview of Aleis DataLink Menu Screen



**Show Session-** Displays lists of sessions when you select old or current  
**Current -**Displays current session  
**Old-** Displays sessions previously cleared from reader

**Re-downloads** session out of reader

**Open:** Opens sessions previously saved on computer  
**Save As:** Saves sessions to file of choice on computer

**Clears all Sessions** from reader (Sessions will not be recoverable on the Stocky)

**Clears selected session** from reader (Not Available on the Stocky.)

**Uploads selected session** to reader

**Setup 1:** Update reader software, **2:** Format file systems, **3:** Advanced features

**Remote Connect** only used in multiple reader situations

**Gives the ability to enter RFID number or NLIS number manually** in the event of tag failure.

**Prints selected information**

**Exports session to Excel**

**Exits DataLink**

**Below are a list of options used for transferring information and retrieving information from the NLIS database (Australia Only)**

**Used for producers to transfer livestock to the NLIS database**

**Used for third party to transfer livestock to the NLIS database**

**Retrieves all NLIS numbers recorded to individual PIC from NLIS database**

**Used for replacing non reading identification tags**

**History of all transfers to NLIS Database**

**Gives a full index of all help functions**

#### **9.4 Producer Transfer (Australia Only)**

This opens the NLIS Transfer Wizard, using the selected fields in the current session(s). This button is used for Producer to Producer transfers.

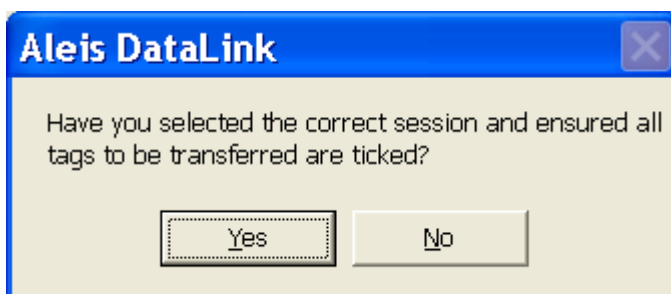
For further information please use the help feature in Aleis DataLink.

#### **Producer Transfer Steps**

**Step 1** Click on the "Producer Transfer" button.



You will be presented with the following Box



**Step 2** Click on "Yes" if you are sure you have selected the correct session and unticked any tags not to be transferred.

You will then be presented with the following Box

Please enter the NLIS Transaction and User Details.

PIC From: ABCD1234

PIC To: ABCD4321

Vendor Dec or Waybill No.: 1234567

Date of movement/sale: 10/04/2006

NLIS User ID: 4prodabc

NLIS Password: \*\*\*\*\*

Email Address: johnsmith@bigpond.com

Upload Later

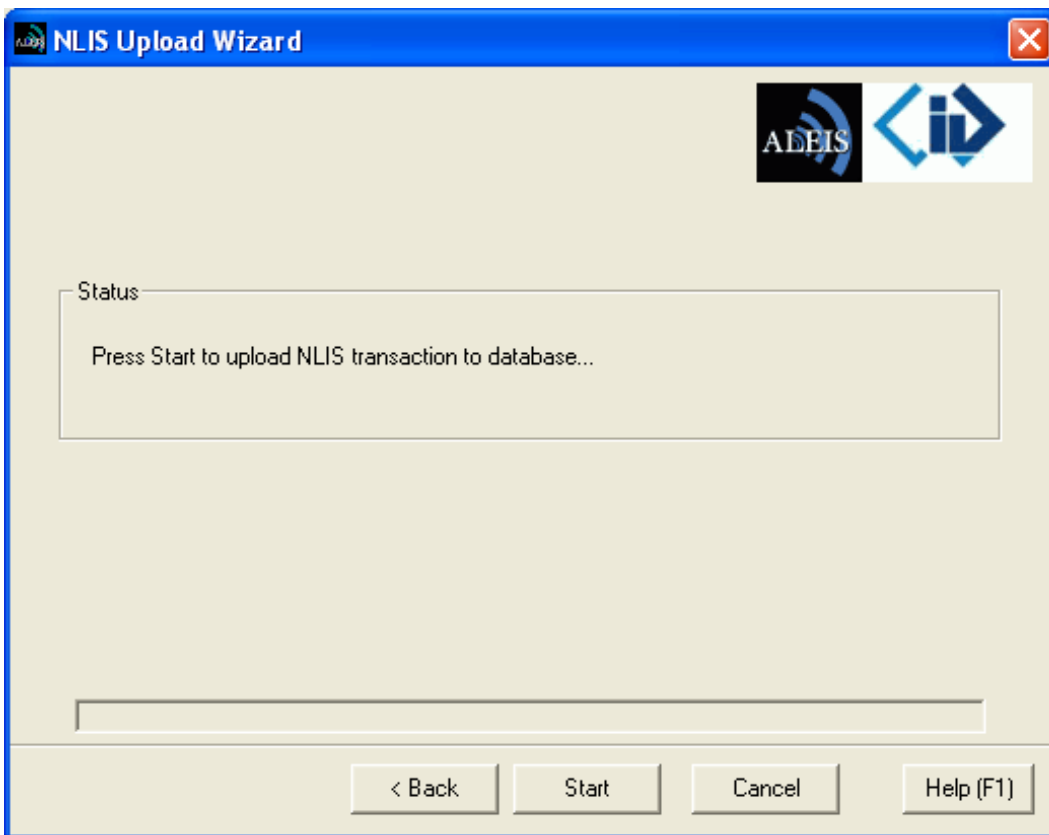
Next > Cancel Help (F1)

**Step 3** After completing the form Click on "Next"

If you choose to tick the Upload Later box the Transfer will not be completed but you can complete the transfer at any time by resuming the upload from the Upload Centre.

The PIC From PIC To and Vendor Dec/Waybill No. can be loaded straight into the form if the fields PI1, PI2 and VEN were used as Data entry on Data entry readers.

You will then be presented with the following Box



**Step 4** Click on the "Start" box

On a successful or unsuccessful transfer you will get a message in the status box.

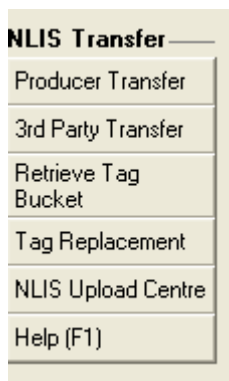
## 9.5 3<sup>rd</sup> Party Transfer (Australia Only)

This opens the NLIS Transfer Wizard, using the selected fields in the current session(s). This button is used for Third Party transfers with or without written permission.

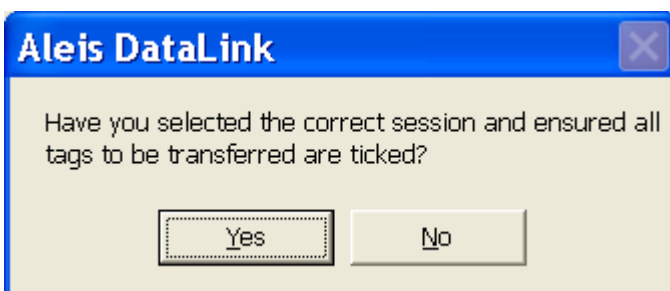
For further information please use the help feature in Aleis DataLink

### 3rd Party Transfer Steps

**Step 1** Click on the "3rd Party Transfer" button.



You will then be presented with the following Box



**Step 2** Click on "Yes" if you are sure you have selected the correct session and unticked any tags not to be transferred.

You will then be presented with the following Box

Please enter the NLIS Transaction and User Details.

PIC From: ABCD1234      PIC To: ABCD4321

Vendor Dec or Waybill No.: 1234567      Date of movement/sale: 23/06/2006

NLIS User ID: 4prodabc      NLIS Password: xxxxxxxx

Email Address: johnsmith@bigpond.com      Upload Later

Written Authority

Third Party Producer Transfer with Non-Written Authorisation

First Name: john      Last Name: smith

Authorisation: Vendor

Vendor  
Buyer  
Vendor and Buyer/Other

Next >      Cancel      Help (F1)

**Step 3** After completing the form Click on "Next"

If you choose to tick the Upload Later box the Transfer will not be completed but you can complete the transfer at any time by resuming the upload from the Upload Centre.

The PIC From PIC To and Vendor Dec/Waybill No. can be loaded straight into the form if the fields PI1, PI2 and VEN were used as Data entry on Data entry readers.

You will then be presented with the following Box

**Disclaimer**

You are required to understand and accept the following disclaimer before continuing with a 3rd party transfer:

"I warrant that I am authorised by the authoriser named above to notify MLA of this transfer on their behalf. I acknowledge that I am liable for all losses and damages arising out of this warranty being incorrect and indemnify MLA for those losses or damages."

Do you accept this agreement?

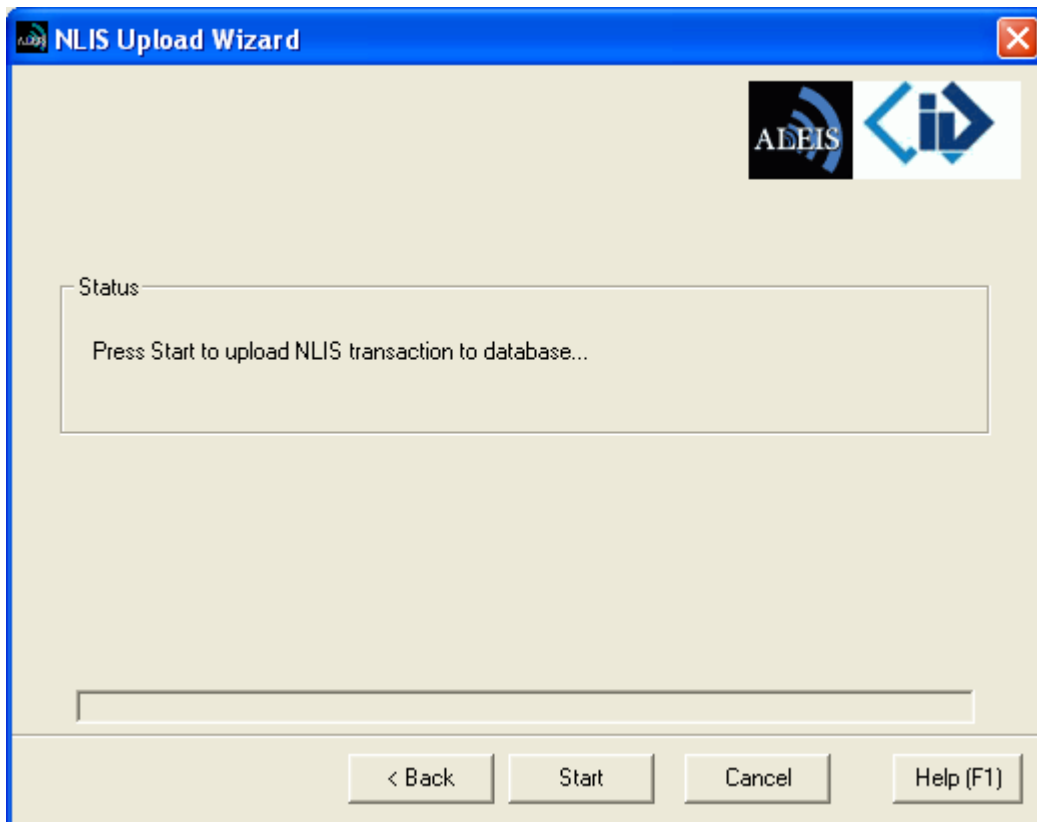
Yes      No



**Step 4** Click on "Yes"

You have to accept this agreement to finish the transaction

You will then be presented with the following Box



**Step 5** Click on the "Start" Box

On a successful or unsuccessful transfer you will get a message in the status box.

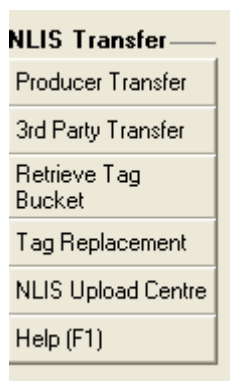
## 9.6 Retrieve Tag Bucket (Australia Only)

This opens the NLIS Transfer Wizard, to retrieve all RFID and NLIS ID tag numbers that match a specific PIC from the NLIS database. You can also retrieve the Lifetime Traceability (LT), EU Status (EU), Last Transfer Date (TFR) and the Issue Date (ISS)

For further information please use the help feature in Aleis DataLink

### Retrieve Tag Bucket Steps

**Step 1** Click on the "Retrieve Tag Bucket" button.



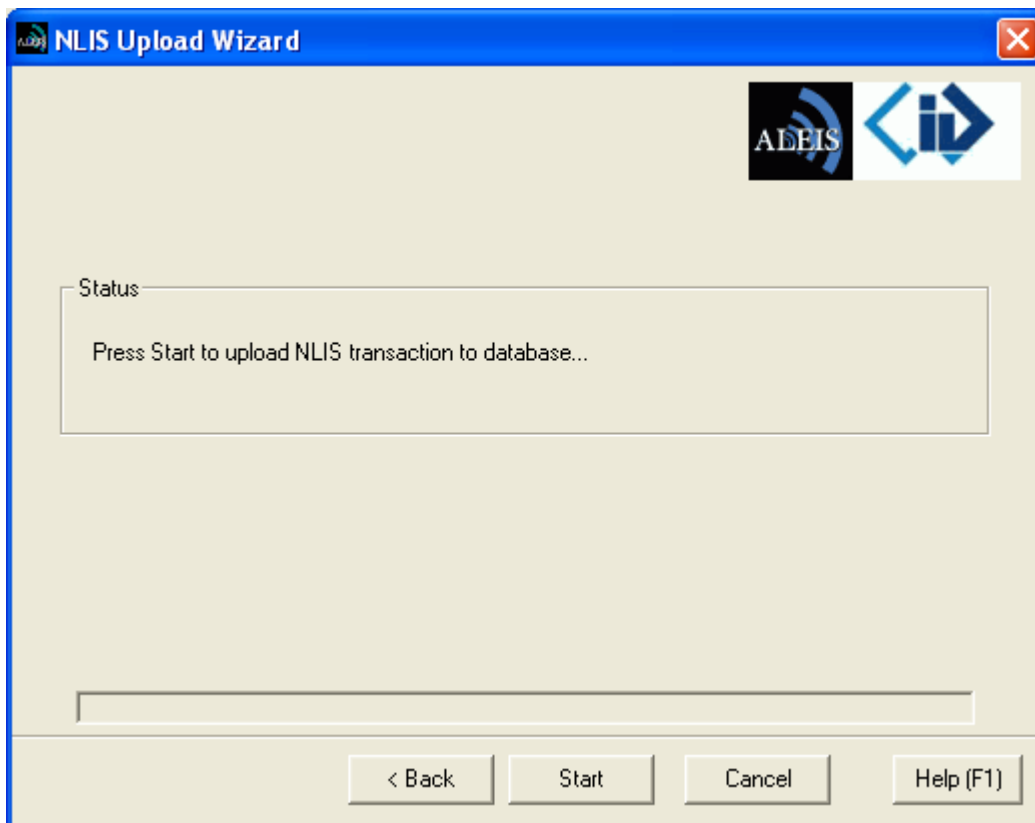
You will then be presented with the following Box

A screenshot of a dialog box titled "Please enter the Property of Interest and User Details." The dialog box has a blue title bar with a close button (X) in the top right corner. The main content area is light beige and contains the following elements:

- A text label: "Please enter the NLIS Transaction and User Details."
- Two logos: "ALEIS" and a stylized "id" logo.
- A "PIC From" dropdown menu with the value "ABCD1234".
- An "NLIS User ID" dropdown menu with the value "4prodabc".
- An "NLIS Password" text input field with the value "\*\*\*\*\*".
- An "Email Address" dropdown menu with the value "johnsmith@bigpond.com".
- A section titled "Select Fields to Retrieve (Maximum of 3 fields)" containing four checkboxes:
  - Lifetime Traceability (LT)
  - EU Status (EU)
  - Last Transfer Date (TFR)
  - Issue Date (ISS)
- At the bottom, three buttons: "Next >", "Cancel", and "Help (F1)".

**Step 2** After completing the form Click on "Next"

You will then be presented with the following Box



**Step 3** Click on "Start"

The Tag Bucket will be loaded into the main screen of DataLink.

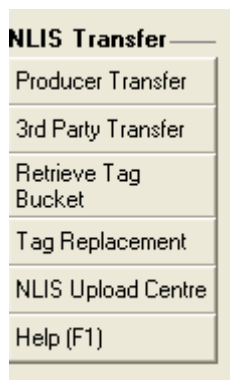
## 9.7 Tag Replacement (Australia Only)

This opens the NLIS Tag Replacement Request form using the selected tags in the current session. This button is used for replacing defective RFID tags.

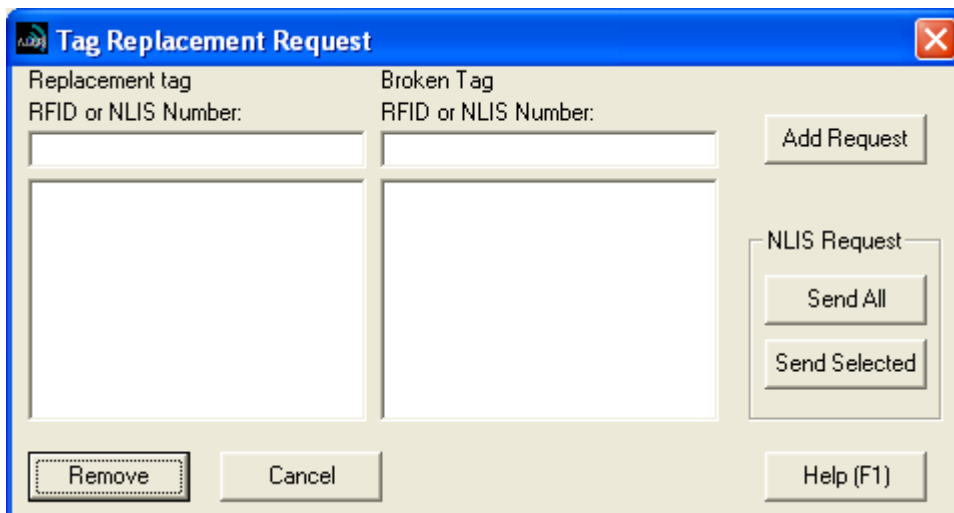
For further information please use the help feature in Aleis DataLink

### Tag Replacement Steps

**Step 1** Click on the "Tag Replacement" button.



You will be presented with the following Box



If there are any tags in the current session you are given the option to load them into the Replacement tag box.

**Step 2** Type in the Replacement tag and the Broken tag in the boxes below

The screenshot shows a dialog box titled "Tag Replacement Request". It contains two columns of input fields. The left column is labeled "Replacement tag" and the right column is labeled "Broken Tag". Both columns have a label "RFID or NLIS Number:" above a text input box. The left input box contains the text "QWRF1234LBA00045" and the right input box contains "QWRF1234LBA00002". Below these input boxes are two large empty rectangular areas. To the right of the input boxes is an "Add Request" button. Below that is a group box labeled "NLIS Request" containing "Send All" and "Send Selected" buttons. At the bottom of the dialog are "Remove", "Cancel", and "Help (F1)" buttons.

**Step 3** Click on the "Add Request" Box and the tags will be inserted into the box below.

This screenshot is identical to the previous one, but the "Add Request" button has been clicked. The two large empty rectangular areas below the input fields now contain the tag numbers "QWRF1234LBA00045" and "QWRF1234LBA00002" respectively. The "Add Request" button is now disabled.

**Step 4** Click on the "Send All" or "Send Selected" button (it can only send the selected tags if required)

You will be presented with the following Box

A screenshot of a Windows-style dialog box titled "Please enter the Property of Interest and User Details." The dialog contains the text "Please enter the NLIS Transaction and User Details." and two logos: ABEIS and a stylized 'id' logo. Below the text are three input fields: "PIC From" with a dropdown menu showing "ABCD1234", "NLIS User ID" with a dropdown menu showing "4prodabc", and "NLIS Password" with a text box containing "xxxxxxx". Below these is an "Email Address" dropdown menu showing "johnsmith@bigpond.com". At the bottom of the dialog are three buttons: "Next >", "Cancel", and "Help (F1)".

**Step 5** After completing the form Click on "Next"

You will be presented with the following Box

A screenshot of a Windows-style dialog box titled "NLIS Upload Wizard". The dialog contains the ABEIS and stylized 'id' logos. Below the logos is a "Status" label and a text box containing the message "Press Start to upload NLIS transaction to database...". At the bottom of the dialog are four buttons: "< Back", "Start", "Cancel", and "Help (F1)".

**Step 6** Click on "Start"

On a successful or unsuccessful tag replacement you will get a message in the status box

### 9.8 NLIS Upload Centre (Australia Only)

This opens the Upload Centre screen, which displays all transactions with the NLIS database. Both successful and unsuccessful transactions are displayed and information regarding the transaction. For further information please use the help feature in Aleis DataLink

Upload Date	Trans Date	PIC From	PIC To	Vendor Dec	NLIS User	Status	Accepted	Upload
13/06/2006 09:14:1	13/06/2006	NH222222	NI555555	1234567	aleis001	Partial Transfer	1/4	577
13/06/2006 09:13:1	13/06/2006	NH222222	NI555555	1234567	aleis001	Invalid username	0/4	
15/05/2006 14:40:2	09/05/2006	NH222222	NB666666	1234567	aleis001	Invalid Transfer	0/50	567
10/05/2006 15:32:1	10/05/2006	NJ888888	NB666666	1234567	aleis001	Invalid username	0/8	

## **10.0 Aleis Conditions of Sale**

1. In these conditions:
  - (1) 'Vendor' means Aleis Pty Ltd ACN 130 754 826 of the Cnr Old Rosevale & Jandowae/Kingaroy Rds, Jandowae, Queensland, 4410 which is the seller of the goods
  - (2) 'Factory' means the Vendor's principal place of business at the Cnr Old Rosevale & Jandowae/Kingaroy Rds, Jandowae, Queensland, 4410
  - (3) Purchaser' means the customer(s) described overleaf which is the purchaser of the goods.
  - (4) 'Goods' means the products and, if any, services specified overleaf
  - (5) Nothing in these conditions shall be read or applied so as to exclude, restrict or modify or have the effect of excluding, restricting or modifying any condition, warranty, guarantee, right or remedy implied by law (including the Trade Practices Act 1974) and which by law cannot be excluded, restricted or modified.
  - (6) Words denoting the singular number only include the plural number and vice versa; where reference to any gender includes every other gender and words denoting individuals include corporations
2. These conditions (which shall only be waived in writing signed by the vendor) shall prevail over all conditions of the purchaser's order to the extent of any inconsistency.
3. The goods and all other products sold by vendor are sold on these terms and conditions.
4. Unless previously withdrawn, vendor's quotation is open for acceptance within the period stated therein or, when no period is so stated, within thirty (30) days only after its date. The vendor reserves the right to refuse any order based on this quotation within 7 days after the receipt of the order.
5. The cost of any special packing and packing materials used in relation to the goods shall be at the purchaser's expense notwithstanding that such cost may have been omitted from any quotation.
6. The purchaser waives any claim for shortage or discrepancy of any goods delivered if a claim in respect thereof has not been lodged with vendor within seven (7) days from the date of receipt of goods by the purchaser.
7. All specifications, drawings, and particulars of weights and dimensions submitted by vendor are approximate only and any deviation shall not be taken to vitiate any contract with vendor or form grounds for any claim against vendor. The descriptions, illustrations and performances contained in catalogues, price lists and other advertising matter do not form part of the contract of sale of the goods. Where specifications, drawings or other particulars are supplied by purchaser, vendor's price is made on estimates of quantities required. Should there be any adjustments in quantities above or below the quantities estimated by vendor and set out in a quotation, then any such increase or decrease shall be adjusted on a unit rate basis according to unit prices set out herein.
- 8.1 Any performance figures given by vendor are estimates only. Vendor shall be under no liability for damages for failure to attain such figures unless specifically guaranteed in writing and any such written guarantee shall be subject to the recognised tolerances applicable to such figures.
- 8.2 The Purchaser acknowledges that frequency from other products, for example computer equipment, videos, loud speakers and other metal products may affect the goods' performance. The Vendor gives no warranty that in the event of any frequency disruption the goods will remain fit for the purpose intended. The Vendor will not be liable for any claims made as a result of other equipment or other things interfering with the performance of the goods whether on account of frequency disruption or otherwise.
9. Delivery dates mentioned are an estimate only and vendor shall not be liable for late delivery or non-delivery and under no circumstances shall the vendor be liable for any loss, damage or delay occasioned to the purchaser arising from late or non-delivery or late installation of the goods.
10.
  - (1) Unless specifically agreed otherwise in writing, delivery shall be ex-factory. The Purchaser must make its own arrangements for the transport of the goods from the factory and any assistance that the Vendor gives in transporting the goods shall not effect the rights of the Vendor under this Clause. Vendor is not responsible for any loss or damage to goods in transit.
  - (2) Risk in the goods shall pass to the Purchaser upon dispatch of goods from Factory.
11.
  - (1) Vendor's liability for goods manufactured by it is limited to making good any defects by repairing the same or at vendor's option by replacement, within a period not exceeding twelve calendar months after the goods have been dispatched (or installed by Aleis) provided that:
    - (a) defects have arisen solely from faulty materials or workmanship;
    - (b) the goods have not received maltreatment, inattention or interference;
    - (c) accessories of any kind used by the purchaser are manufactured by or approved by vendor;
    - (d) the seals of any kind on the goods remain unbroken; and
    - (e) the defective parts are promptly returned free of cost to vendor.
    - (f) all freight is paid by the purchaser.
  - (2) If goods are not manufactured by vendor the guarantee of the manufacturer thereof shall be accepted by the purchaser and is the only guarantee given to purchaser in respect of the goods.
  - (3) Vendor shall not be liable for and purchaser releases vendor from any claims in respect of faulty or defective design of any goods supplied unless such design has been wholly prepared by vendor and the responsibility for any claim has been specifically accepted by



vendor in writing and in any event vendor's liability hereunder shall be strictly limited to the replacement of defective parts in accordance with para 11(1) of these conditions.

- (4) Except as provided herein, all express and implied warranties, guarantees and conditions under statute or general law as to merchantability, description, quality, suitability or fitness of the goods for any purpose or as to design, assembly, installation, materials or workmanship or otherwise are hereby expressly excluded and vendor shall not be liable for physical or financial injury, loss or damage or for consequential loss or damage of any kind arising out of the supply, layout, assembly, installation or operation of the goods or arising out of vendor's negligence or in any way whatsoever.
12. Vendor's liability for a breach of a condition or warranty implied by Div 2 of Pt V of the Trade Practices Act 1974 (other than s 69) is hereby limited to:
    - (1) in the case of goods, any one or more of the following:
      - (a) the replacement of the goods or the supply of equivalent goods;
      - (b) the repair of the goods;
      - (c) the payment of the cost of replacing the goods or of acquiring equivalent goods;
      - (d) the payment of the cost of having the goods repaired; or
    - (2) in the case of services:
      - (a) the supplying of the services again; or
      - (b) the payment of the cost of having the services supplied again.
  13. Vendor's liability under s 74H of the Trade Practices Act 1975 is expressly limited to a liability to pay to the purchaser an amount equal to:
    - (1) the cost of replacing the goods;
    - (2) the cost of obtaining equivalent goods; or
    - (3) the cost of having the goods repaired, whichever is the lowest amount.
  14. Unless otherwise stated all prices quoted by vendor are net, exclusive of tax. Prices quoted are those ruling at the date of issue of quotation and are based on rates of freight, insurance, customs duties, exchange, shipping expenses, sorting and stacking charges, cartage, rate of weights, cost of materials and other charges affecting the cost of production ruling on the date the quotation is made and any alterations thereto either before acceptance of or during the currency of the contract shall be to the purchaser's account.
  15. The purchase price in relation to goods shall be payable and payment or balance thereof shall be made immediately at time of order, or otherwise as agreed in writing.
  16. Vendor reserves the following rights in relation to the goods until all accounts owed by the purchaser to vendor are fully paid:
    - (1) legal ownership of the goods;
    - (2) to enter the purchaser's premises (or the premises of any associated company or agent where the goods are located) without liability for trespass or any resulting damage and retake possession of the goods; and
    - (3) to keep or resell any goods repossessed pursuant to (2) above;

If the goods are resold, or products manufactured using the goods are sold, by the purchaser, the purchaser shall hold such part of the proceeds of any such sale as represents the invoice price of the goods sold or used in the manufacture of the goods sold in a separate identifiable account as the beneficial property of vendor and shall pay such amount to vendor upon request. Notwithstanding the provisions above vendor shall be entitled to maintain an action against the purchaser for the purchase price and the risk of the goods shall pass to the purchaser upon delivery.
  17. Any property of the purchaser under vendor's custody or control shall be entirely at the purchaser's risk as regards loss or damage caused to the property or by it.
  18. Vendor reserves the right to make a reasonable charge for storage if the purchaser does not take delivery of goods within fourteen days of notification that the goods are ready for collection.
  19. Vendor shall not be under any obligation to accept goods returned by the purchaser and will do so only on terms to be agreed in writing in each individual case.
  20. All goods to be supplied by vendor shall be as described on the quotation overleaf and the description on such order modified as so agreed shall prevail over all other descriptions including any purchaser's specification or inquiry.
  21. No order may be cancelled except with consent in writing and on terms which will indemnify vendors against all losses.
  22. The contract for sale of the goods is made in the state of Queensland and the parties agree to submit all disputes arising between them to the courts of such state at any court competent to hear appeals therefrom.
  23. The Purchaser shall pay all and any import duties, levies or imports and/or any sales, use, excise, gross receipts, value added, goods and services tax, property or other taxes or duties of any kind whatsoever assessed upon or relating in any way to the goods ordered by the Purchaser irrespective of the person, nation, state or authority requiring payment thereof.
  24. If the Vendor has not paid for any goods on the due date specified in this Agreement, without prejudice to any other right or remedy, all outstanding money shall bear interest on daily balances until paid at the rate of 1.5% per month and such money together with all interest shall be recoverable forthwith from the Purchaser.

The Purchaser charges as a fixed charge with the payment of all monies now or in the future becoming owing hereunder all his property both real and personal (other than property referred to in *Section 262 (i) of the Corporations Law*) and as a separate charge charges all his other property with the payment of all monies now or in the future becoming owing hereunder, provided that this second charge will be a floating charge in respect of the Purchaser's current assets but otherwise will be a fixed charge. The Purchaser irrevocably makes, nominates, constitutes and appoints, and in the place and stead of the Purchaser puts and deposes the Vendor and (if the Vendor is a corporation) the directors, general manager and secretary for the time being of the Vendor jointing and each of them severally to be the Attorney or Attorneys of Purchaser at any time after default as aforesaid has been made (sufficient proof of which will be the Statutory Declaration of the Attorney or Attorneys or either or any of them) to do all such things as may be required to consent to any Caveat or other like instrument under the Real Property Legislation of any other jurisdiction in the form prepared by the Vendor's Solicitor over any or all of the Purchaser's property and to execute a mortgage and/or charge or other like instrument under the Real Property Legislation of any other jurisdiction in such form and containing such terms and conditions as the Vendor may require over any or all of the Purchaser's property and from time to time to appoint a substitute or substitutes and such appointment or appointments at pleasure to revoke and another or other substitute or substitutes to appoint and generally to do, execute and perform any act, deed, matter or thing for that purpose as fully and effectually as the Purchaser could do and the Purchaser agrees to ratify and confirm all and whatever the said Attorney or Attorneys or any substitute or substitutes lawfully do or cause to be done for that purpose.

The End Ver10/05/01