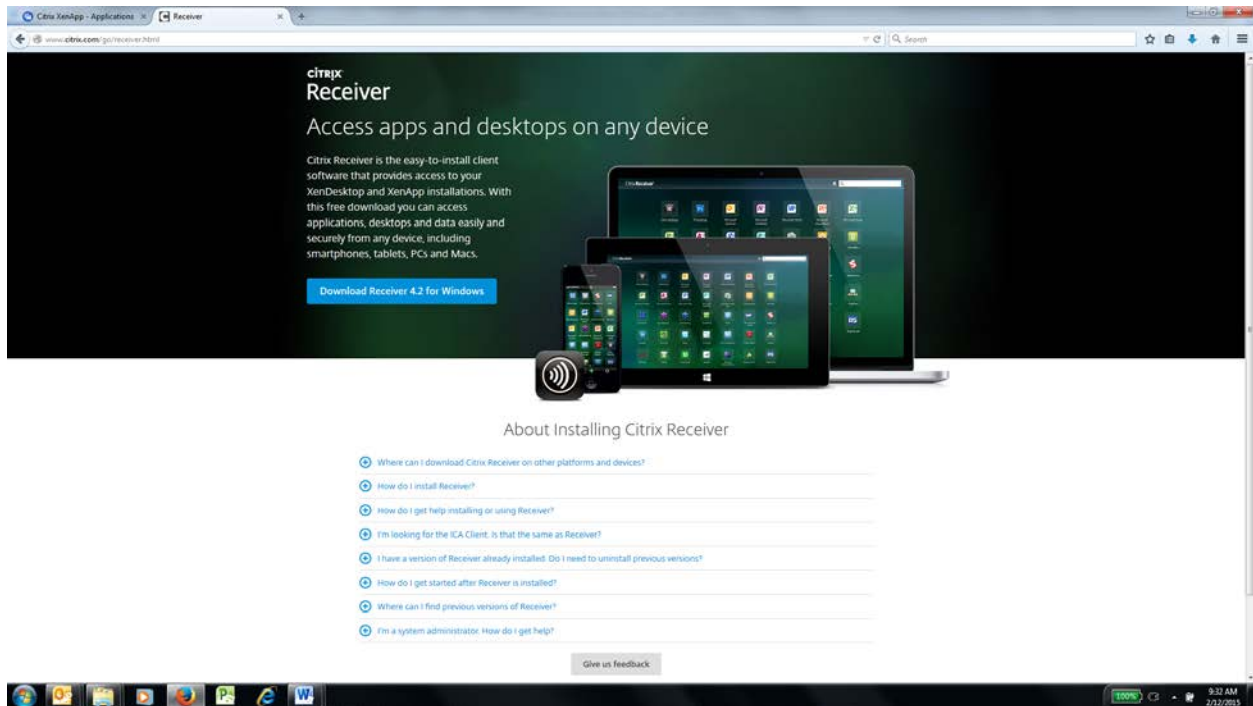


# TeleHERMES User Guide

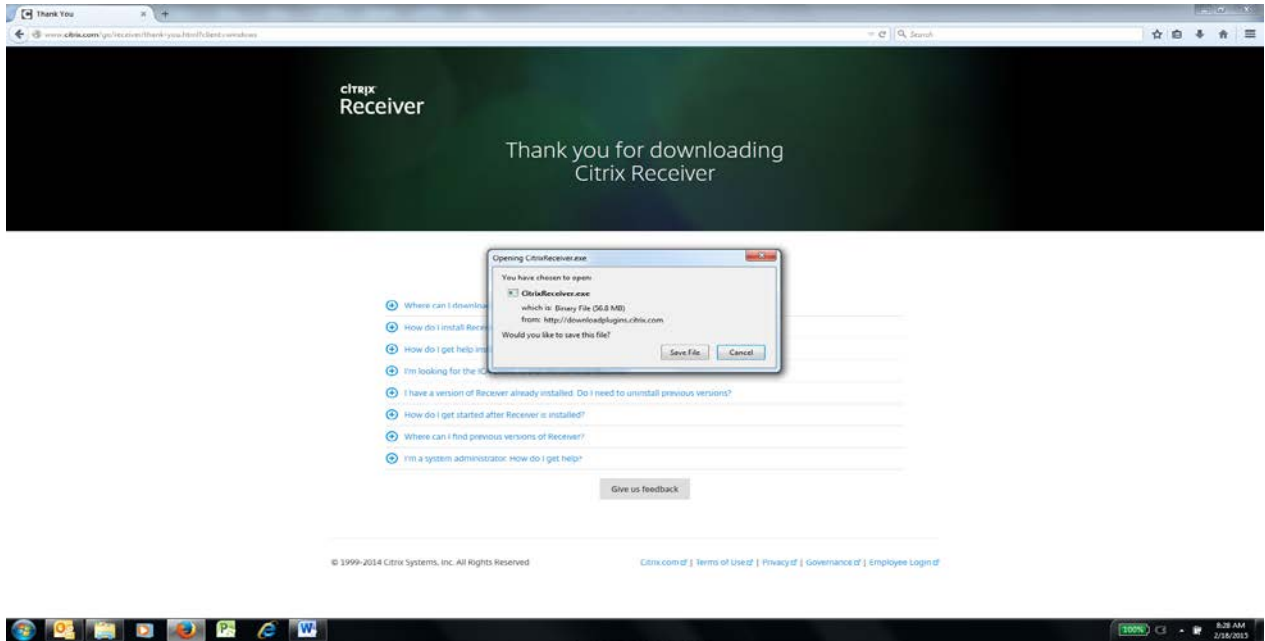
(Instructions only available in English)

1. In order to use the Hermes Hybrid Viewer PDR software you must have Citrix Receiver software installed on your computer. If you already have Citrix Receiver on your computer skip to Step # 10.
2. Open your web browser (preferably Firefox) and enter the following address or click on the hyperlink: <http://www.citrix.com/go/receiver.html>
3. Click on **Download Receiver 4.2 for Windows** (if you have a Mac computer go to “Where can I download Citrix Receiver on other platforms and devices” and chose Mac).

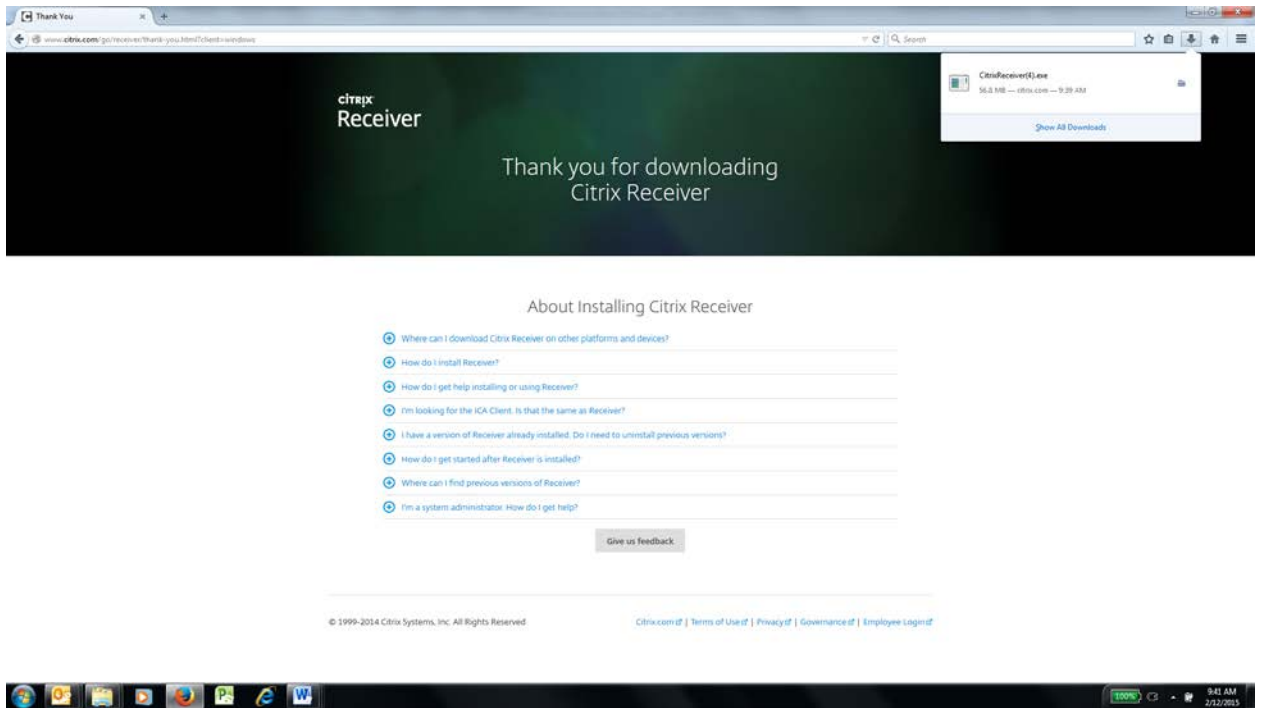


# TeleHERMES User Guide

## 4. Click **Save File**

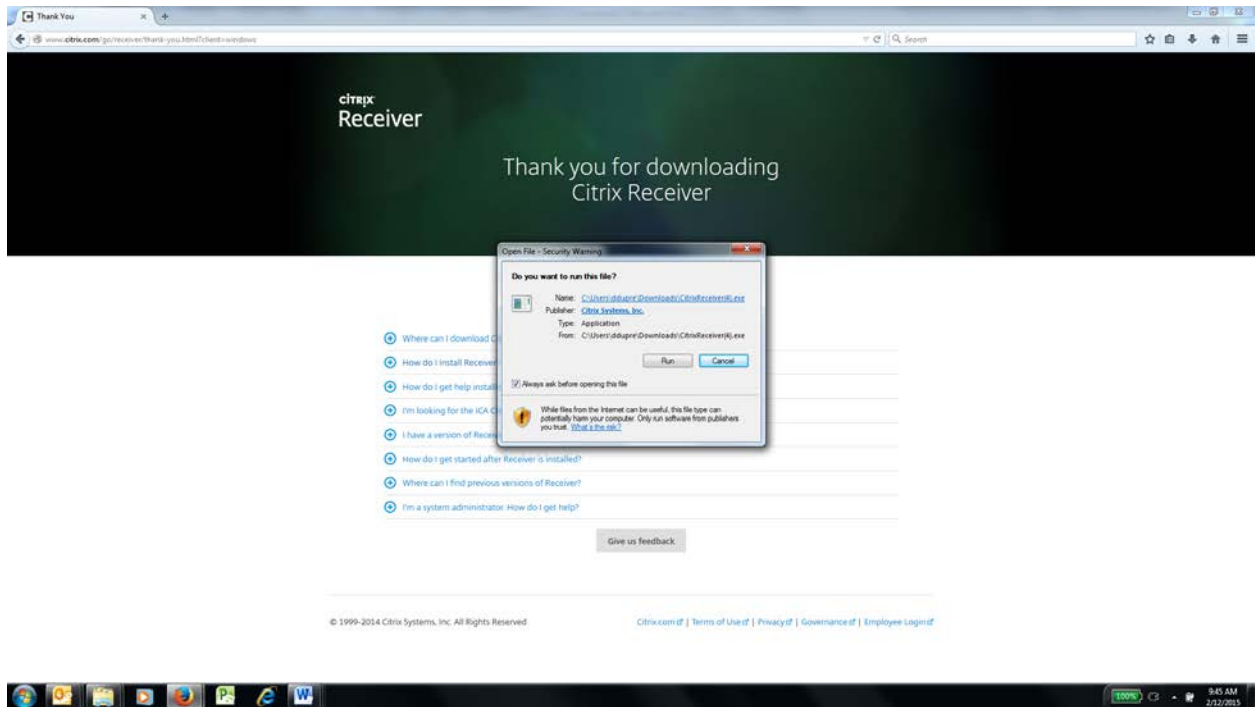


## 5. Click on the down arrow and then click on **citrixreceiver (4).exe**

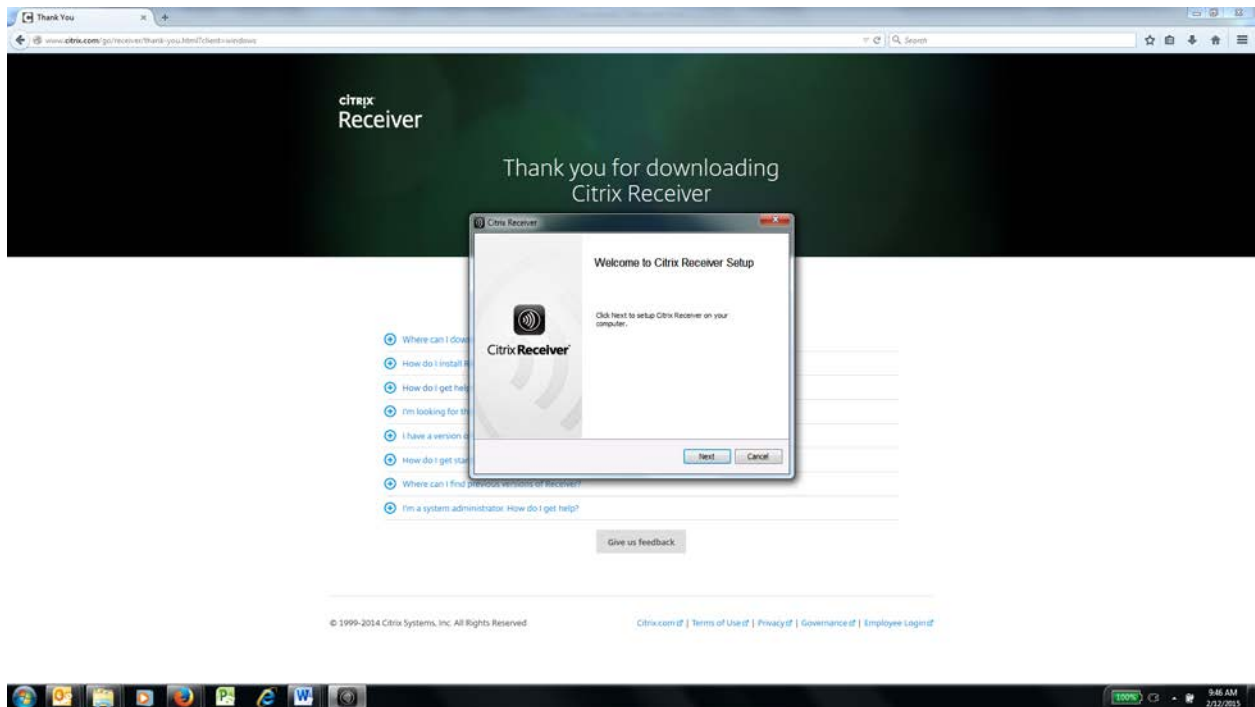


# TeleHERMES User Guide

## 6. Click Run

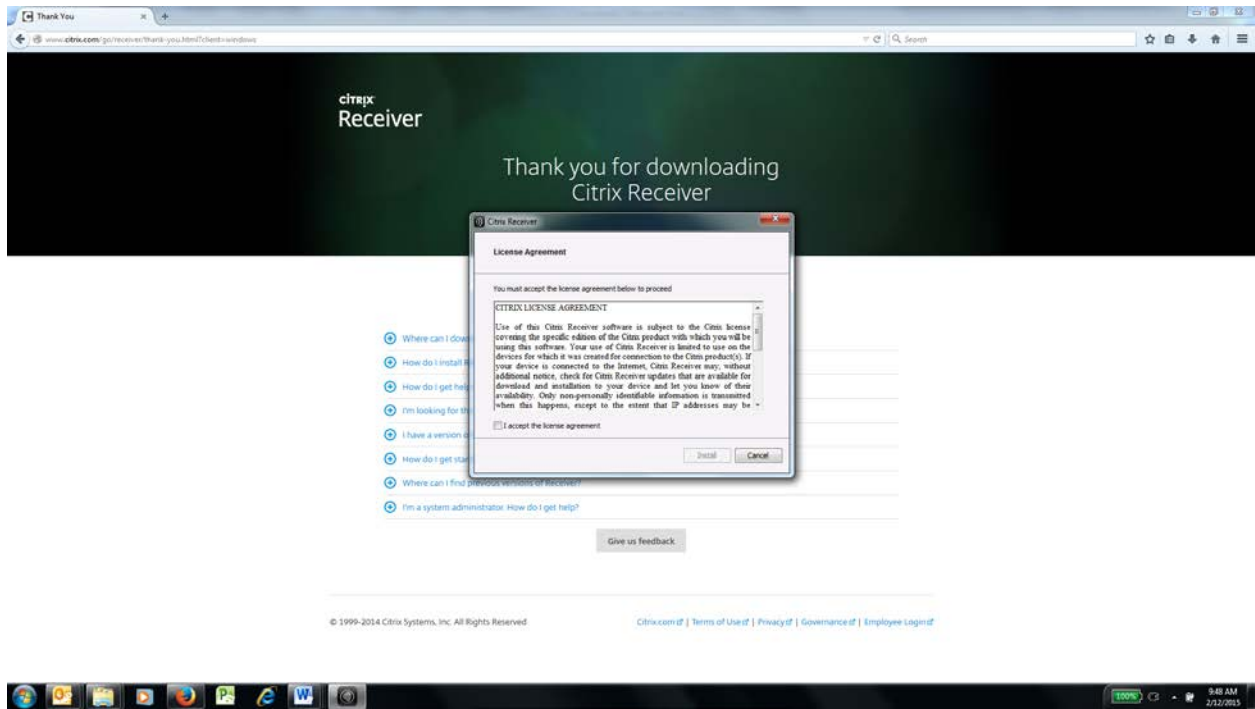


## 7. Click Next

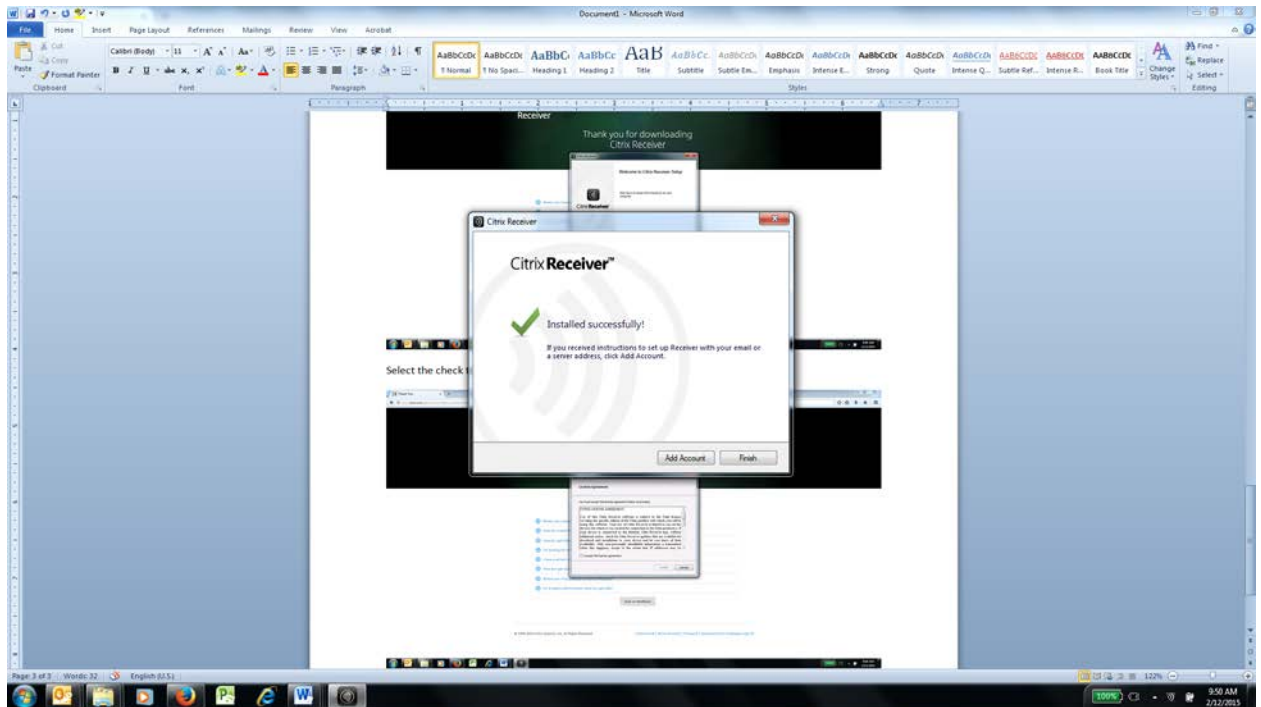


# TeleHERMES User Guide

8. Select the **check box** to agree to the Citrix License Agreement. Select **Install**.



9. Click **Finish**. You will see the Citrix icon on your bottom toolbar.



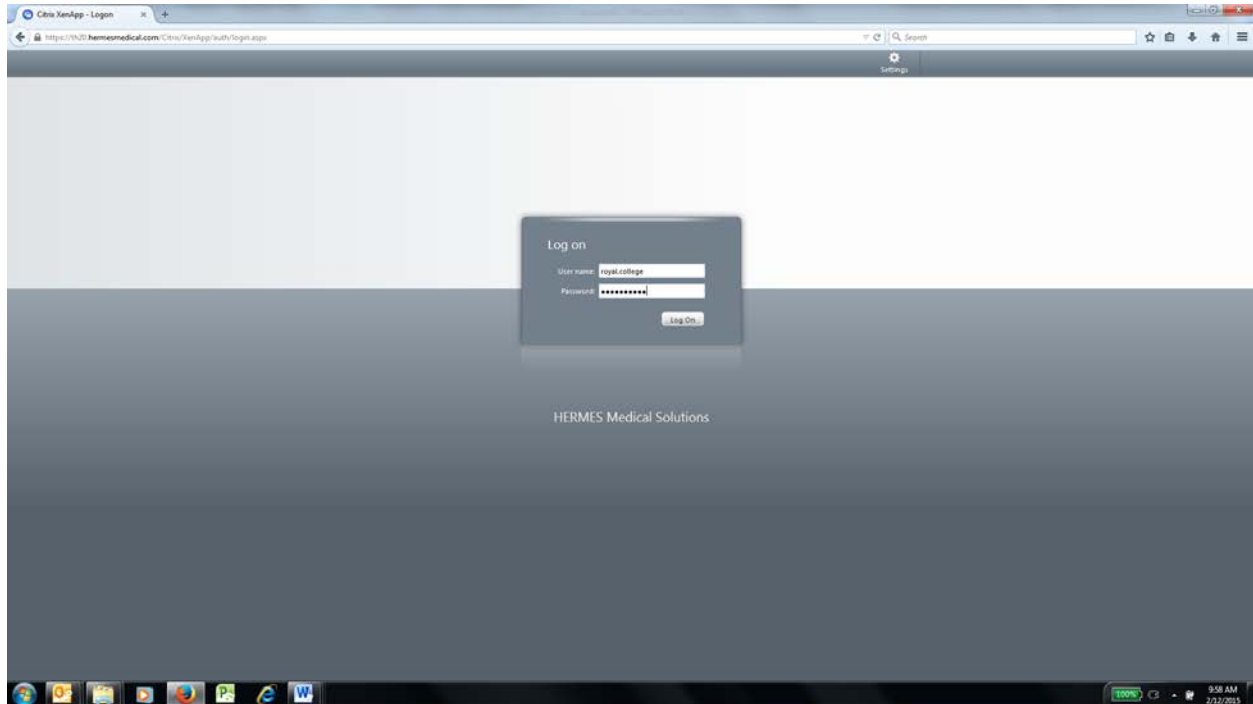
## TeleHERMES User Guide

10. Open your web browser and enter <https://th20.hermesmedical.com>

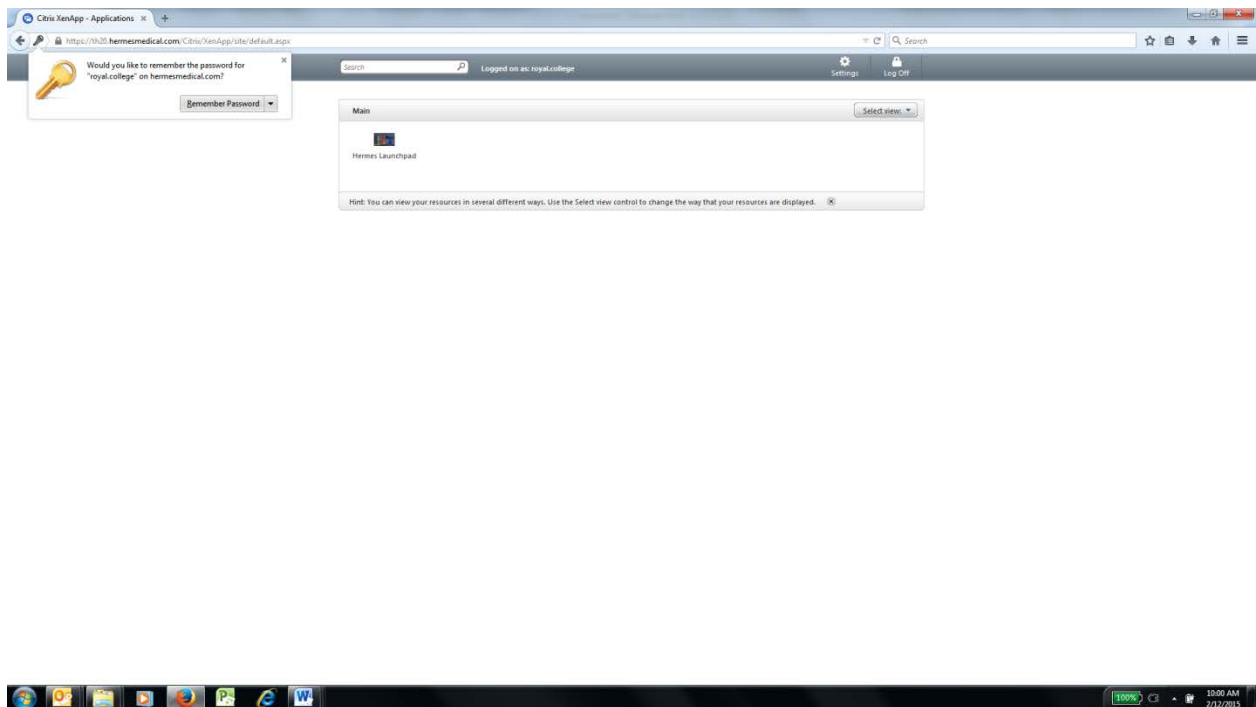
**User name:** royal.college

**Password:** l34fYtr33! (the first character is a small L)

11. Click **Log On**

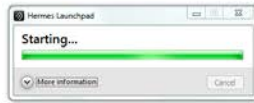


12. Click on the **Hermes Launchpad**



# TeleHERMES User Guide

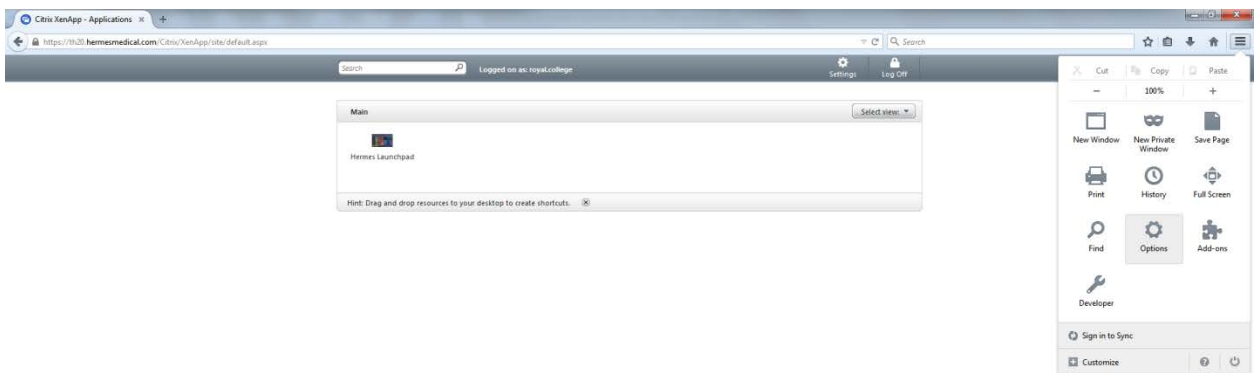
## 13. Hermes Launchpad will open



Note: If you reach Step #13 and the Hermes Launchpad does not open please follow these steps.

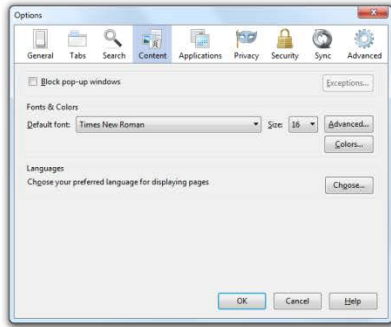
(If you complete these steps and the Launchpad still does not open it means that someone else is using the site. Only one person at a time has access to the site.)

### Select Options:

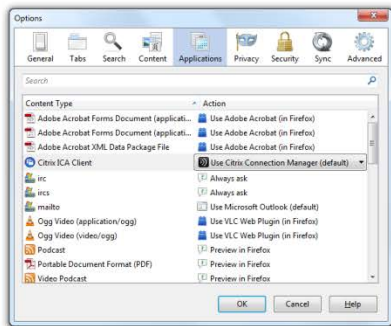


# TeleHERMES User Guide

If the “Block pop-up windows” is checked – **uncheck it**. Click **ok**

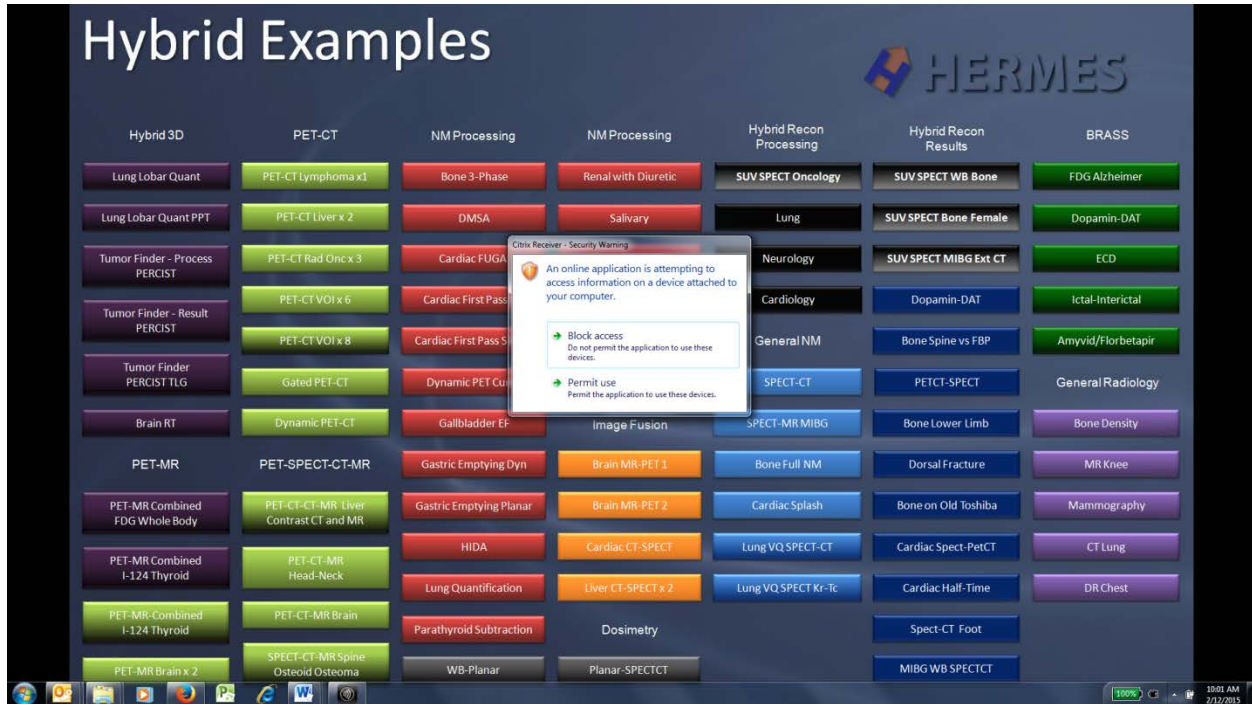


Return to the Options window and choose **Applications**. Select **Use Citrix Connection Manager**. Click **OK**. Return to Step # 12 and you should now be able to launch the Hermes Launchpad.



## TeleHERMES User Guide

### 14. Click permit use



### 15. Congratulations. The HERMES Hybrid Viewer PDR™ Examples will now be visible.

**Important: Only one person at a time will be able to use the site.**

**When you complete your session, you must close all running applications as this will ensure the next candidate will start fresh – at the actual Launchpad.**