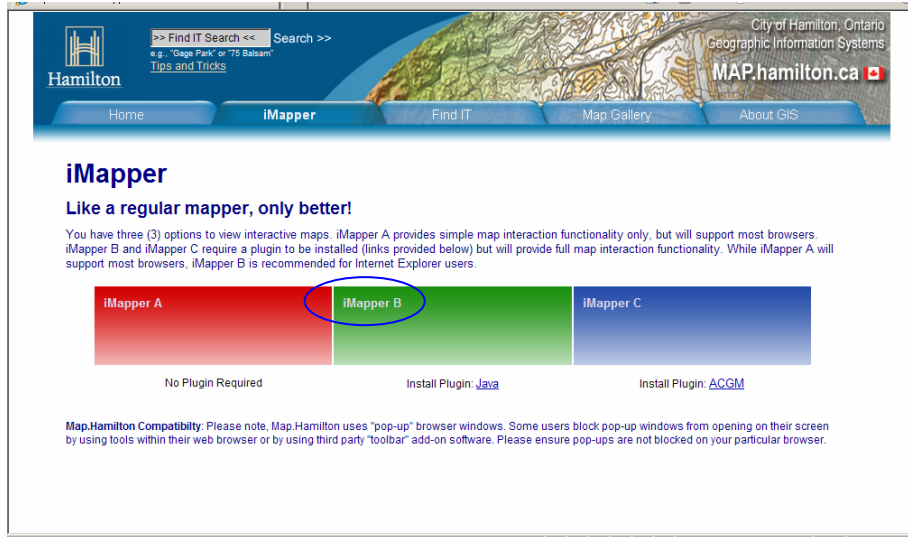


# Tax Impact Mapping

There are three options available to view interactive maps. “iMapper B” (the second option) is recommended.



The screenshot shows the City of Hamilton's MAP.hamilton.ca website. At the top, there is a search bar with the text ">> Find IT Search <<" and a search button. Below the search bar is a navigation menu with buttons for Home, iMapper, Find IT, Map Gallery, and About GIS. The main content area is titled "iMapper" and includes the sub-heading "Like a regular mapper, only better!". Below this, there is a paragraph explaining the three options: iMapper A (no plugin required), iMapper B (requires Java plugin), and iMapper C (requires ACGM plugin). The iMapper B option is highlighted with a blue circle. At the bottom, there is a compatibility note about pop-up windows.

City of Hamilton, Ontario  
Geographic Information Systems  
MAP.hamilton.ca

Home iMapper Find IT Map Gallery About GIS

## iMapper

**Like a regular mapper, only better!**

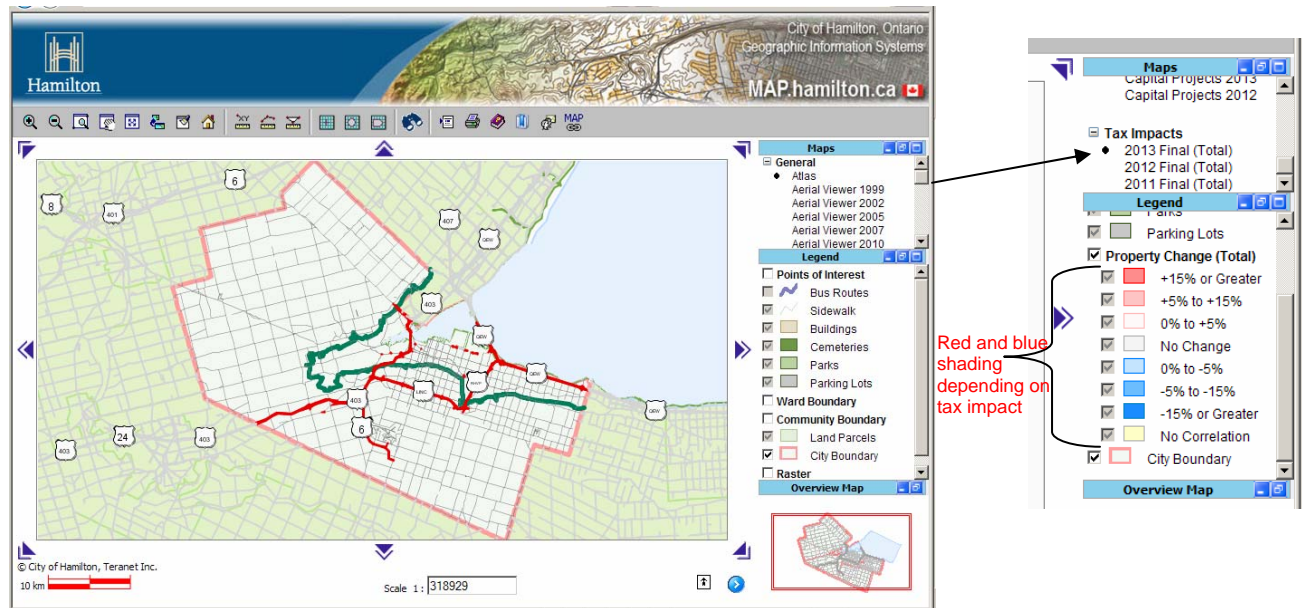
You have three (3) options to view interactive maps. iMapper A provides simple map interaction functionality only, but will support most browsers. iMapper B and iMapper C require a plugin to be installed (links provided below) but will provide full map interaction functionality. While iMapper A will support most browsers, iMapper B is recommended for Internet Explorer users.

iMapper A	iMapper B	iMapper C
No Plugin Required	Install Plugin: <a href="#">Java</a>	Install Plugin: <a href="#">ACGM</a>

**Map.Hamilton Compatibility:** Please note, Map.Hamilton uses "pop-up" browser windows. Some users block pop-up windows from opening on their screen by using tools within their web browser or by using third party "toolbar" add-on software. Please ensure pop-ups are not blocked on your particular browser.

- select iMapper B option, if prompted, select <Run>

The following screen will appear;



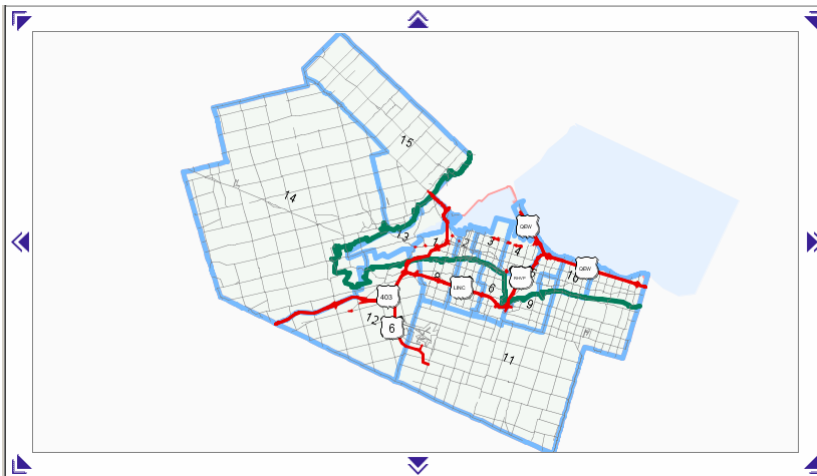
Scroll down in the “Maps” legend on the right-hand side, selecting “2013 Final (Total)” under Tax Impacts, for the most current information. Select <Ok> when prompted to “Maintain Map Extent?”. The legend on the right-hand side will identify the tax impact ranges (i.e. light red = +5% to +15%, darker red = +15% or greater, etc.).

To zoom into a specific area, either click on the “zoom in” button and then click on the area of the map you are interested in, or, click on the “zoom by area” button and then click on the map to highlight a specific area you are interested in.

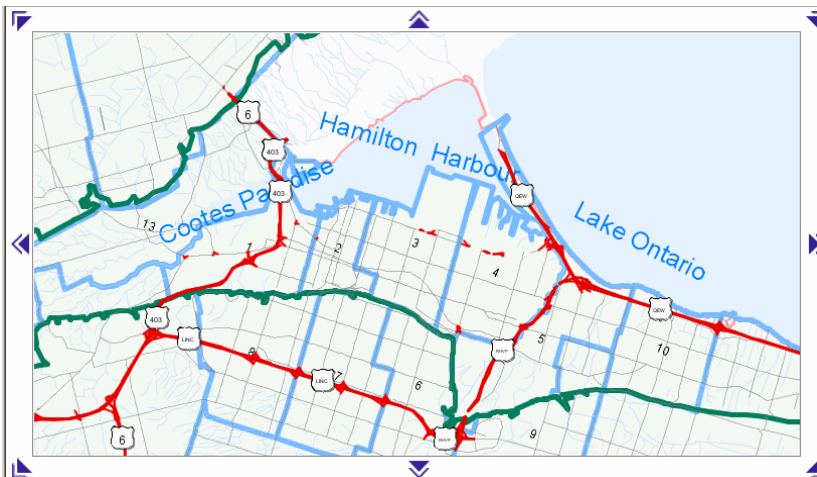


You can continue to zoom in to a more specific area as follows:

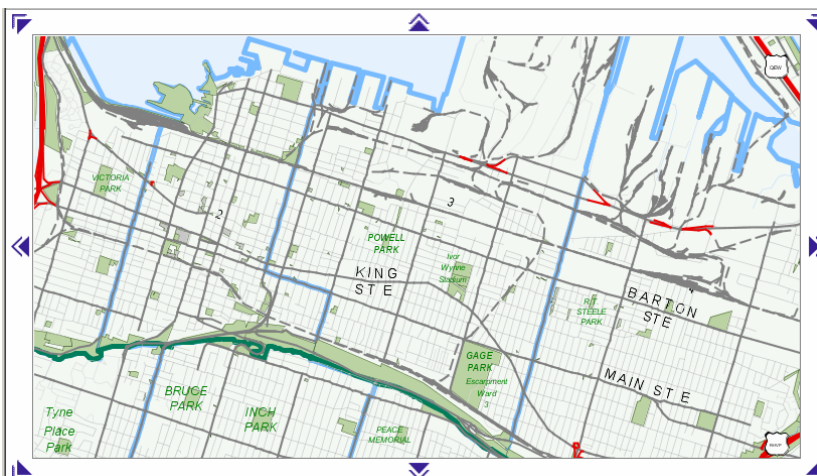
Starting position:



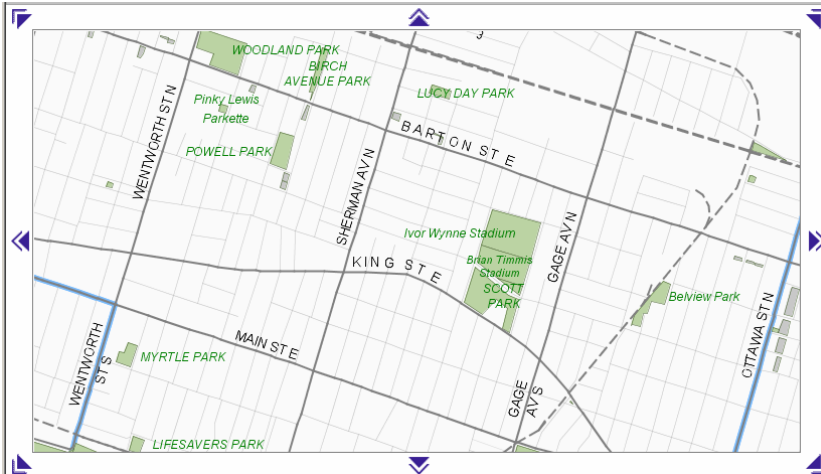
Zoom in once (in this example by clicking on ward 3 area of the map):



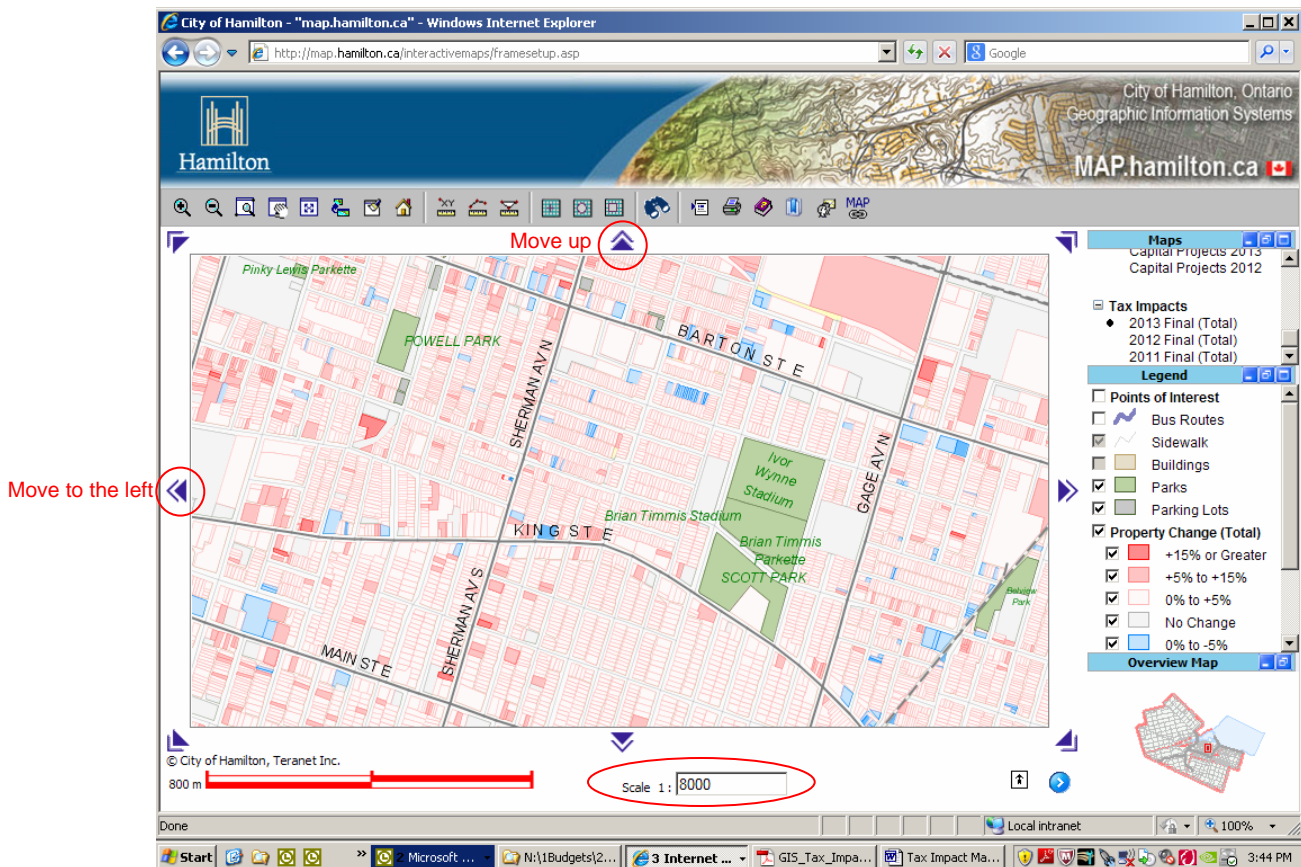
Zoom in twice (in this example by clicking on ward 3 area of the map again):



Zoom in a third time (in this example by clicking on the area of interest in ward 3 again):



In order to see the individual properties colour coded by tax impact, the map scale has to be at 1:8000 or less. At this point, you can simply input 8000 (and <enter>) in the scale box to display the following:





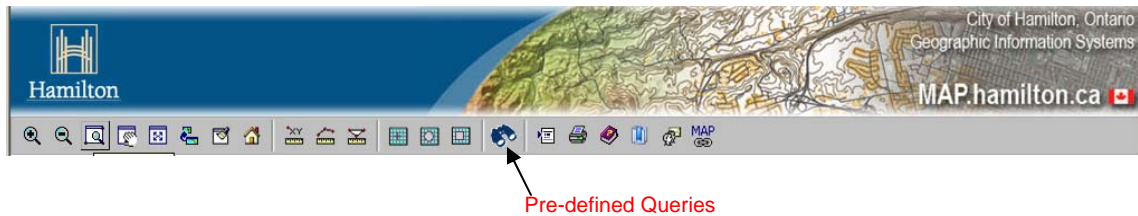
You can continue to zoom in or adjust the scale, if interested, or use the arrows to move up/down, left/right on the map. Once the shading is visible (at a scale of 1:8000 or smaller), you can click on a property to get assessment, property tax and tax impact information.

The screenshot displays the MAP.hamilton.ca web application interface. On the left, a window titled "0% to +5% Properties" lists detailed information for a specific property:

AROLL	251803026200520
PROPERTY ADDRESS	60 BARNESDALE AVE S
MUNICIPALITY	01
WARD	03
PROPERTY CODE	332
RTC RTQ 2012	RT
RTC RTQ 2013	RT
ASSESSMENT 2012	187000
ASSESSMENT 2013	193000
ASSESSMENT CHANGE	6000
PERCENT ASSESS CHANGE	3.2
TAXES 2012	2665
CAPPING 2012	0
TOTAL TAXES 2012	2665
TAXES 2013	2721
CAPPING 2013	0
TOTAL TAXES 2013	2721
DOLLAR CHANGE TAXES	56
PERCENT CHANGE TAXES	2.1
IDI	40121

The main map area shows a street grid with color-coded property changes. A legend on the right lists categories such as "Points of Interest", "Bus Routes", "Sidewalk", "Buildings", "Parks", "Parking Lots", and "Property Change (Total)". The "Property Change (Total)" legend includes color swatches for: +15% or Greater (dark red), +5% to +15% (medium red), 0% to +5% (light red), No Change (white), and 0% to -5% (blue). An overview map in the bottom right corner shows the current map's location within a larger area.

Alternatively, you can search for a specific property by selecting the "Pre-defined Queries" button on the top toolbar.



Address - Windows Internet Explorer

Address   Intersection   Points of Interest   Parks   Cemeteries

Enter street name below, click the lookup button, and select a street name from the list [HELP](#)

Starts with    Contains

Street Name:      

Select all

Select by address range   from:    to:

Select by specific address   number:

   Zoom   Min width:

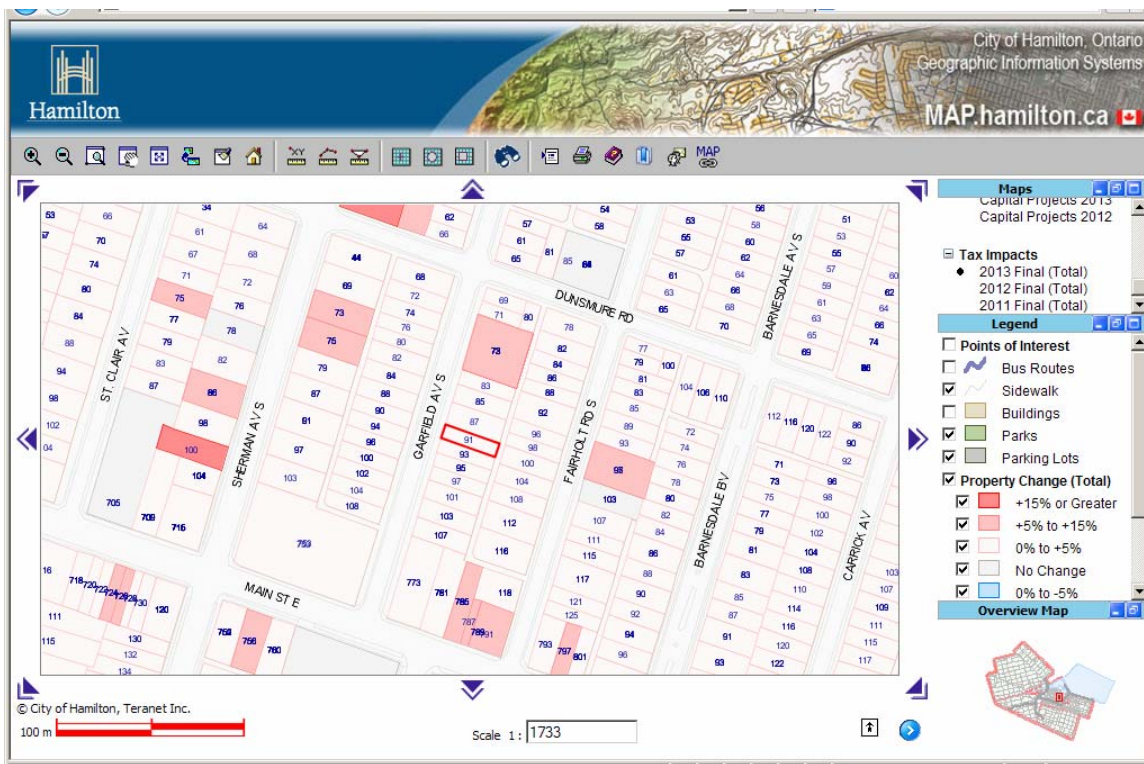
NOTE: Please be aware we are currently working with the Municipal Property Assessment Corporation (MPAC) to resolve address errors as soon as possible. If you have any questions or concerns, please forward them to [GISServices@Hamilton.ca](mailto:GISServices@Hamilton.ca)

Address (1)	Street number	Street name	Community	Property num	Frontage	Depth	Site area	Unit of measure
	91	GARFIELD AVE S	HAMILTON	251803026152170	25	100	0.06	A

Once the Street is selected, click the 'FIND' button

In this example the 'Address' tab was selected. 'Garfield' was typed in the street name text box and then the 'lookup' button was clicked to verify the street name. A specific address was specified, '91', and the 'find' button was clicked to return a result.

Click the push pin to locate this address on the map.



Clicking on the property will bring up the property-specific information window, to view the property's assessment and property taxes for the current and prior year, plus the dollar and percent change.