



USER GUIDE

WIRELESS USB TO VGA WITH INTEGRATED AUDIO KIT

Model: 29598

TABLE OF CONTENTS

Introduction.....	2
Features.....	3
System Requirements.....	4
Package Contents.....	5
Device Overview	
Wireless USB Host Adapter.....	6
Wireless VGA with Integrated Audio Adapter.....	7
Software/Device Installation.....	8
Using the Wireless USB to VGA with Integrated Audio Kit.....	16
Frequently Asked Questions.....	27
Video Playback Tips.....	31
Technical Specifications.....	32
Cables To Go Warranty.....	34
FCC Statement.....	35
Important Safety Information.....	36
Appendix	
Association with other devices.....	37
Cable Association Procedure.....	38
PIN Association Procedure.....	40
PIN Change Procedure.....	42

INTRODUCTION

Thank you for purchasing the TruLink™ Wireless USB to VGA with Integrated Audio Kit. The TruLink USB to VGA with Integrated Audio Kit includes everything you need to wirelessly stream video and audio from your computer to a remote monitor, projector, or television. Utilizing Ultra-Wide Band technology, the USB to VGA with Integrated Audio Kit enables in-room wireless connectivity at distances up to 30 feet between the computer and the display equipment. This highly secure wireless connection is ideal for classroom or conference room presentations or to display content from your laptop to your home entertainment system. **We recommend that you read this manual thoroughly and retain for future reference.**

FEATURES

- ❖ Video and audio support in a single device adapter, delivered wirelessly from a computer to an external display Supports high resolution UXGA/WSXGA video and 3.5mm stereo audio
- ❖ Works in both extended desktop and dual monitor screen modes
- ❖ Supports native mode for playback of high resolution video
- ❖ Up to six computers can share one wireless display and speaker set*
- ❖ One computer can broadcast over six audio/video displays**
- ❖ Video streaming is supported up to 720p (720p only available at resolution 1280x720 or lower)
- ❖ In-room wireless connectivity up to 30ft
- ❖ Ultra-Wide Band operates in the frequency of 3.1GHz to 4.8GHz (WiMedia™ Band Group 1&3)
- ❖ Certified Wireless™ USB 1.0 compliant
- ❖ WiMedia 1.0 MAC & 1.1 PHY compliant

*Requires the purchase of additional USB Host Adapters for the additional computers

** Requires the purchase of additional VGA with Integrated Audio Device adapters for additional displays

SYSTEM REQUIREMENTS

- ❖ Microsoft® Windows® XP 32-bit with Service Pack 3 or higher; Microsoft® Vista® 32-bit/64-bit; or Windows 7 32-bit/64-bit

Minimum Requirements (Office, Productivity, and Web applications)

Windows XP- Processor: 1.66GHz Atom or Celeron
Ram: 512MB

Windows Vista/

Windows 7- Overall WEI Score: 3.0 or better
Processor: 1.4GHz Core2Duo or better
Memory: 1GB
Video Card: Any GPU

Recommended Requirements (Full-Screen Video Playback)

Windows XP- Processor: 1.8GHz Core2Duo or better
RAM: 1GB

Windows Vista/

Windows 7- Overall WEI Score: 4.5 or better
Processor: 2.4GHz Core2Duo or better
Memory: 2GB
Video Card: Intel GMA X4500, ATI Radeon HD3 series, NVidia GeForce 9 series or better

- ❖ You must also have administrative privileges on your PC to install the software package

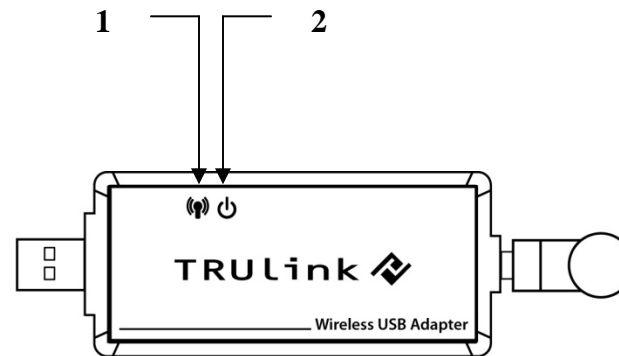
PACKAGE CONTENTS

- ❖ Wireless USB Host Adapter for your computer
- ❖ Wireless VGA With Integrated Audio Adapter for your display
- ❖ Two Dipole-Antennas
- ❖ 3ft USB A Male/Mini B Male Cable
- ❖ 1ft VGA Male/Male Cable
- ❖ 3ft 3.5mm Male /Male Cable
- ❖ 3ft 3.5mm Male to 2 RCA Male Cable
- ❖ 5V/2.5A Power Adapter
- ❖ USB Extender with Cradle
- ❖ Mounting Bracket
- ❖ Two Self-Tapping Screws
- ❖ Quick Start Guide
- ❖ Driver CD
- ❖ User Manual

DEVICE OVERVIEW

WIRELESS USB HOST ADAPTER

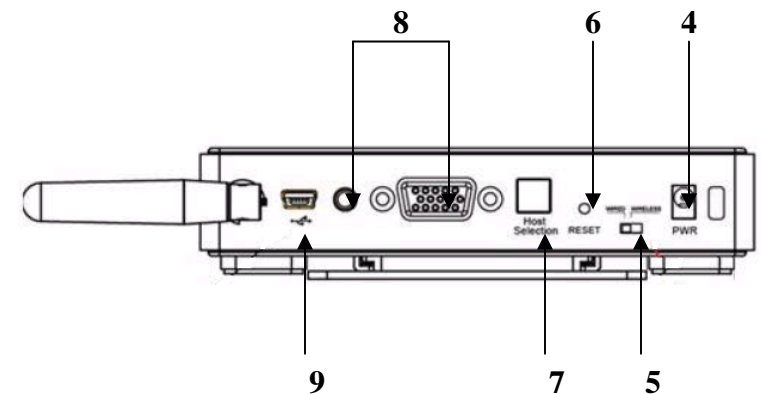
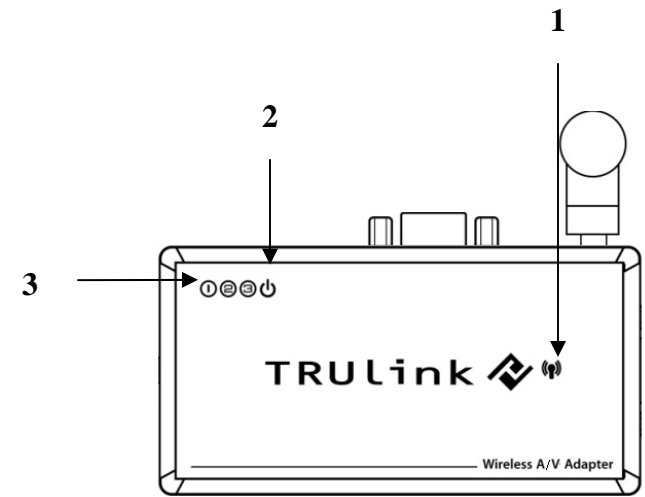
1. Link: Data Connection Indicator
 - LED is solid when transfer device is connected
 - LED blinks when data is being transferred
2. PWR: Power
 - LED is solid when powered by the PC



DEVICE OVERVIEW

WIRELESS VGA WITH INTEGRATED AUDIO ADAPTER

1. VGA: VGA Activity Indicator
 - LED is solid when display cable is connected.
 - LED is blinking when data is being transferred.
2. PWR: Power Indicator
 - LED is solid when power is applied.
3. 1-2-3: Status Indicator
 - Illuminated number/s indicates the wireless USB Host Adapter that is currently synced with the Wireless VGA with Integrated Audio Adapter.
4. PWR plug
 - Power adapter input
5. Wireless/Wired switch
 - Choose from wired or wireless mode by moving the switch.
6. Reset
 - Association history can be erased by pressing and holding this button for 10 seconds.
7. Host Selection:
 - This button is used to select a different Wireless USB Host Adapter
8. VGA/Audio Outputs
 - HD15 and 3.5mm output connections for connecting to your video and audio source
9. USB input
 - In Wireless mode, this connector is used for cable association.
 - In Wired mode, this connector is used for wired operation of the Wireless VGA with Integrated Audio Adapter



SOFTWARE/DEVICE INSTALLATION

IMPORTANT NOTE:

- If installing on Windows XP, Service Pack 3 (SP3) is required. Verify that this has been installed before installing the Wireless USB to VGA with Integrated Audio Kit software.
- Before installing the software, make sure that the Wireless USB Host Adapter and Wireless VGA with Integrated Audio Adapter are not connected to the computer. Also make sure that the Wireless VGA with Integrated Audio Adapter is not powered.

STEP 1-INSTALLING THE SOFTWARE

Insert the CD provided and the welcome screen will appear. Select the “**Software Installation**” from the menu.

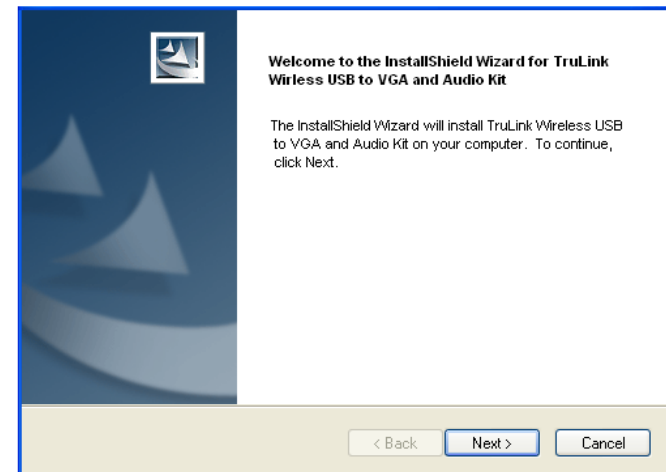


© 2009 Cables To Go. All rights reserved.

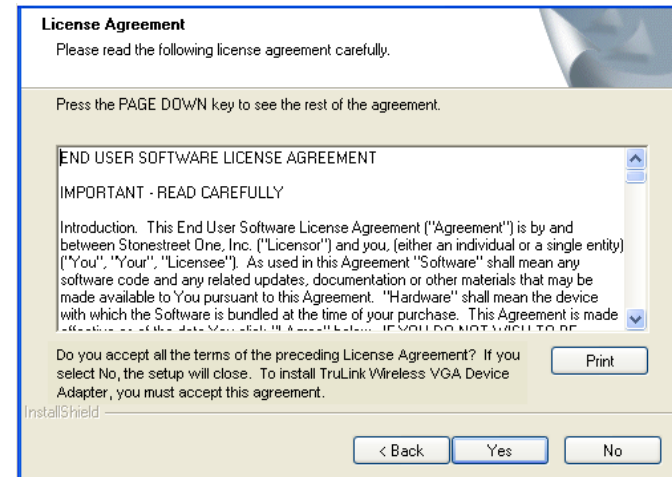
SOFTWARE/DEVICE INSTALLATION

This will take you to the TruLink Wireless USB to VGA with Integrated Audio Kit InstallShield Wizard.

Click **“Next”** to go to proceed with the install.

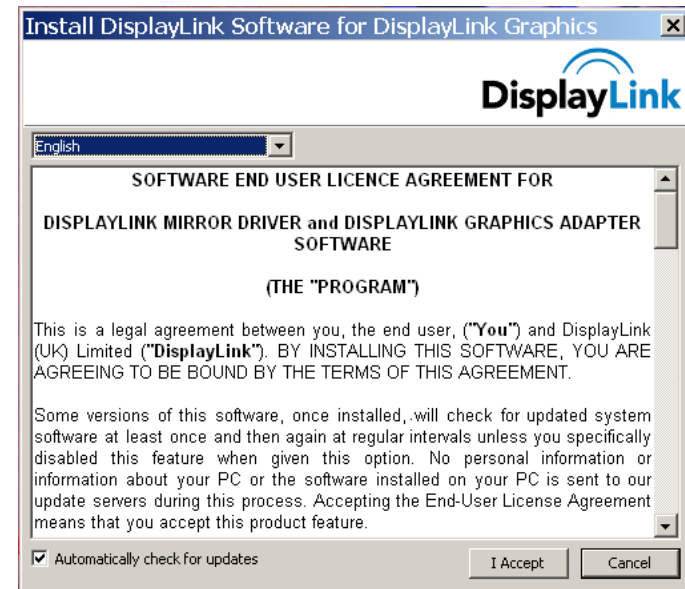


Read and accept the Wireless USB software License Agreement by clicking **“Yes”**.

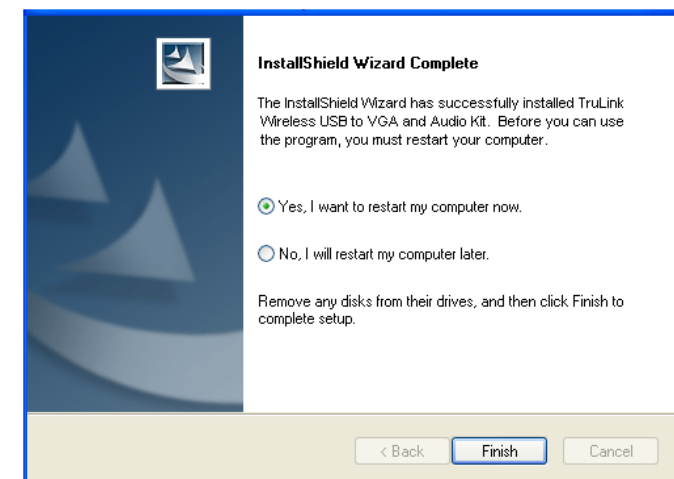


SOFTWARE/DEVICE INSTALLATION

Read and accept the License Agreement for the DisplayLink software.



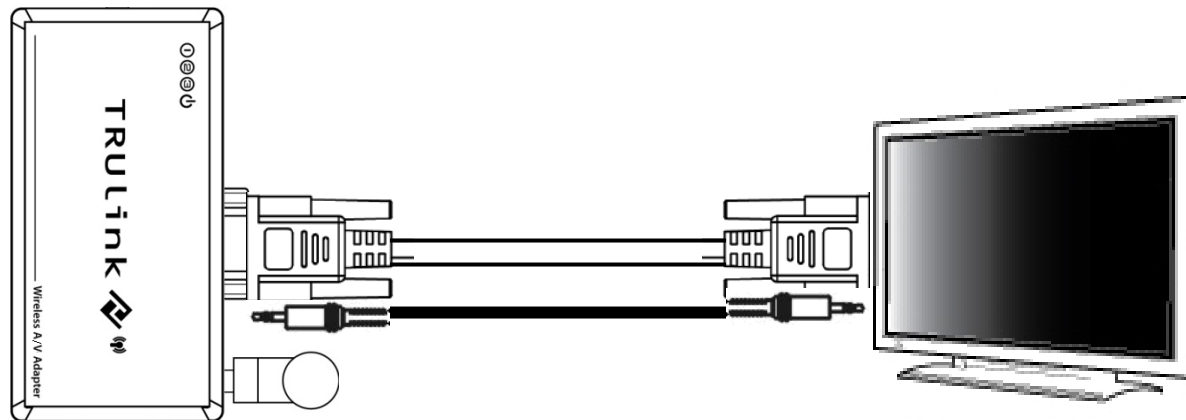
After the software installs, your installation is complete and you can hit the "Finish" button to exit the wizard.
Important: reboot/restart if prompted.



SOFTWARE/DEVICE INSTALLATION

STEP 2A – DEVICE INSTALLATION FOR THE WIRELESS VGA WITH INTEGRATED AUDIO ADAPTER

1. Connect one of the dipole antennas to the Wireless VGA with Integrated Audio Adapter.
2. Power on your display device (i.e. monitor, projector, television).
3. Using a VGA male to male cable, connect the Wireless VGA with Integrated Audio Adapter to your display device.
4. With a 3.5mm cable or 3.5mm to L/R audio cable, connect the Wireless VGA with Integrated Audio Adapter to your display device, audio device (A/V receiver) or PC speakers (equipped with a 3.5mm cable attached).
5. Plug in the power adapter to the Wireless USB to VGA with Integrated Audio Kit.



SOFTWARE/DEVICE INSTALLATION

STEP 3 -DRIVER INSTALLATION FOR THE WIRELESS USB HOST ADAPTER

Your Wireless USB to VGA with Integrated Audio Kit has been pre-associated for you, meaning the Wireless USB Host Adapter will automatically recognize the Wireless VGA with Integrated Audio Adapter upon being powered and its successful driver installation. After the software installation you should see the Wireless USB Manager icon in your Windows icon tray. Double-click on this icon to open the manager utility.



Figure: Wireless USB Manager

The Wireless USB Manager will open and instruct you on what to do next (Figure: Wireless USB Manager Welcome Screen).

1. Screw on one of the supplied dipole antennas to the Wireless USB Host Adapter and connect the Wireless USB Host Adapter to an available USB port on your computer. You also have the option to connect the Wireless USB Host Adapter to the USB Cradle provided in the package if you need to make the adapter more mobile.

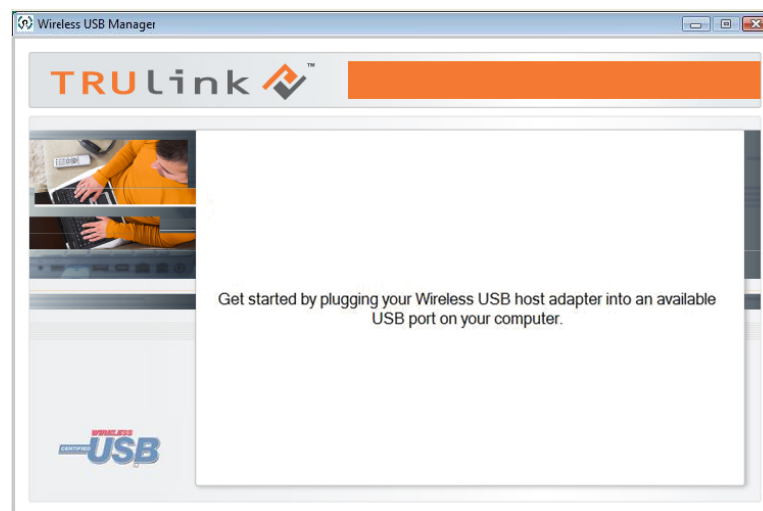
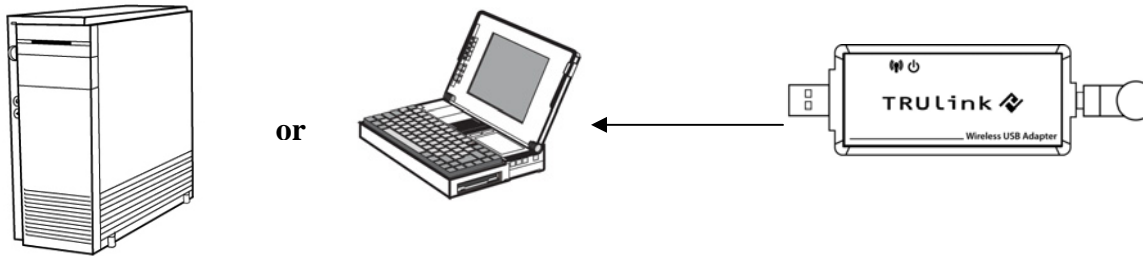


Figure: Wireless USB Manager Welcome Screen

SOFTWARE/DEVICE INSTALLATION



After you connect the Wireless USB Host Adapter to your computer, Windows will automatically install it and you should get a successful install message in your icon tray such as this figure shows.

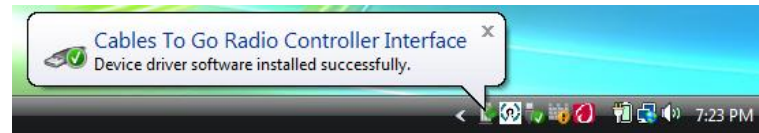


Figure: Successful Install Message

SOFTWARE/DEVICE INSTALLATION

The Wireless USB Host Adapter will search for the Wireless VGA with Integrated Audio Adapter. When association is confirmed between the devices, the Activity Indicators will light up on both units. The DisplayLink Manager utility (Figure: DisplayLink Manager) will activate and install an icon in the Windows icon tray. The TruLink Wireless USB to VGA with Integrated Audio Kit is now fully functional and you are ready to use it.



Figure: DisplayLink Manager

VERIFY CONNECTION

In the Wireless USB Manager, you should see the wireless device icon represented (**Figure: Wireless VGA with Integrated Audio Adapter Connected**), which verifies an active connection status.

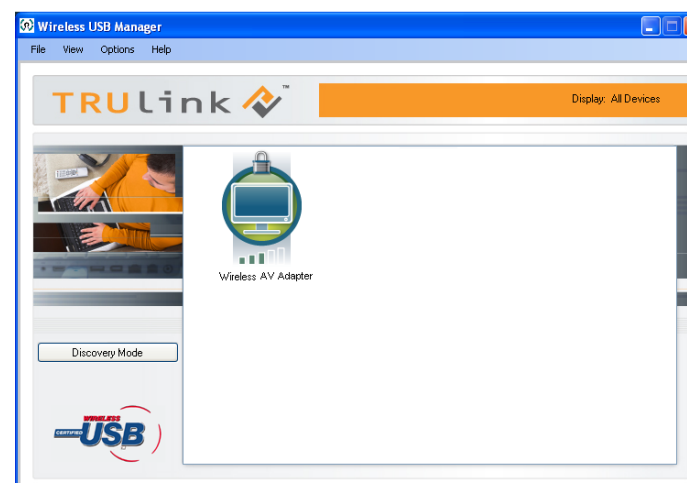


Figure: Wireless VGA with Integrated Audio Adapter Connected

SOFTWARE/DEVICE INSTALLATION

Note: The default setting extends your desktop to the right so you should see the desktop background on the wireless display device, but you will not see any icons initially. You may continue to use it in this setting called, “Extended” mode, allowing you to open applications and documents on the wireless display device to increase your viewing area or this may be switched to “Mirror” mode to clone your main display image. Settings are discussed further in the next section.

USING THE WIRELESS USB TO VGA WITH INTEGRATED AUDIO KIT

WIRELESS VGA DISPLAY SETTINGS

The TruLink Wireless USB to VGA with Integrated Audio Kit hosts a number of various settings so that you may configure your image to the way you need it.

After you have installed the Wireless USB to VGA with Integrated Audio Kit, an icon representing a monitor will appear in your Windows icon tray. This is the DisplayLink Manager. From this utility, you can adjust your image settings. To open the manager, right click on the icon in the Windows tray (**Figure: DisplayLink Manager**). A menu (**Figure: Display Settings Menu**) will appear and you will have the ability to change parameters such as resolution, color quality, mirror mode or extension mode and more.



↑
Figure: DisplayLink Manager

Note: When your Wireless VGA with Integrated Audio Adapter is not in use, the DisplayLink Manager icon will not be visible in your icon tray.

USING THE WIRELESS USB TO VGA WITH INTEGRATED AUDIO KIT

NOTE: By default, your monitor will be set for the best resolution and will extend your screen to the right.

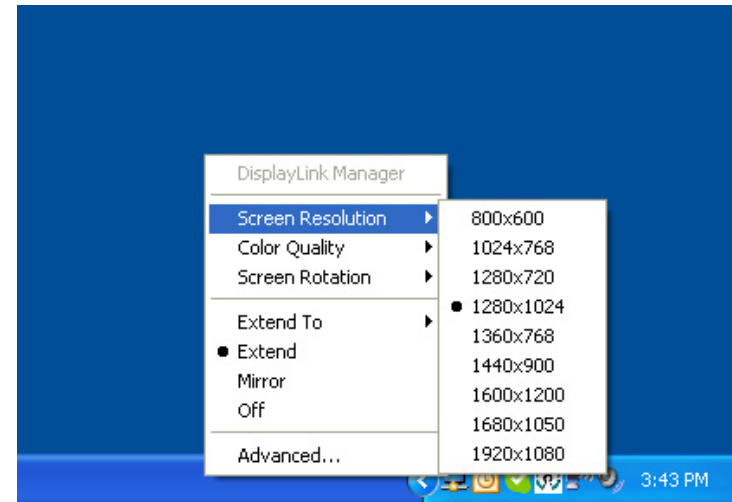


Figure: Display Settings Menu

USING THE WIRELESS USB TO VGA WITH INTEGRATED AUDIO KIT

MENU DESCRIPTIONS

Screen Resolution

This allows adjustment for your video's display capable screen resolutions. Please note that if all the options appear from the range of **800x600~1920x1080**, your monitor will most likely only accept what its maximum capability is. You may want to refer to your specification section of your display device user guide to see the optimal resolution. If you are using a notebook, Screen Resolution will only be available in Extended mode, as in Mirror mode your additional display will mimic the settings of your main notebook monitor and cannot be adjusted to a different resolution.

Color Quality

In this setting you can adjust the color bits between **Medium (16-bit)** and **High (32-bit)**.

Screen Rotation

This setting allows you to leave the display screen in **Normal** viewing mode, **Rotated Left**, **Rotated Right**, or **Upside-Down** viewing.

Extend To

If you are using Extended mode you can utilize this option to extend the display to the **Right**, **Left**, **Above**, or **Below** depending on where your monitor is positioned.

Extend

In this mode you can "extend" your desktop space to an additional monitor so you can have more view of different applications.

Mirror

In this mode you can duplicate your main monitor onto an additional monitor.

USING THE WIRELESS USB TO VGA WITH INTEGRATED AUDIO KIT

Advanced...

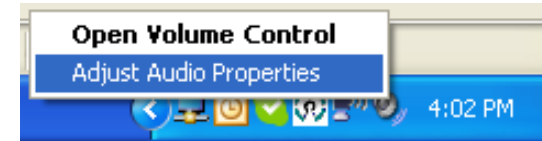
This will allow you to go into the Display Properties settings and make adjustments to your display settings.

USING THE WIRELESS USB TO VGA WITH INTEGRATED AUDIO KIT

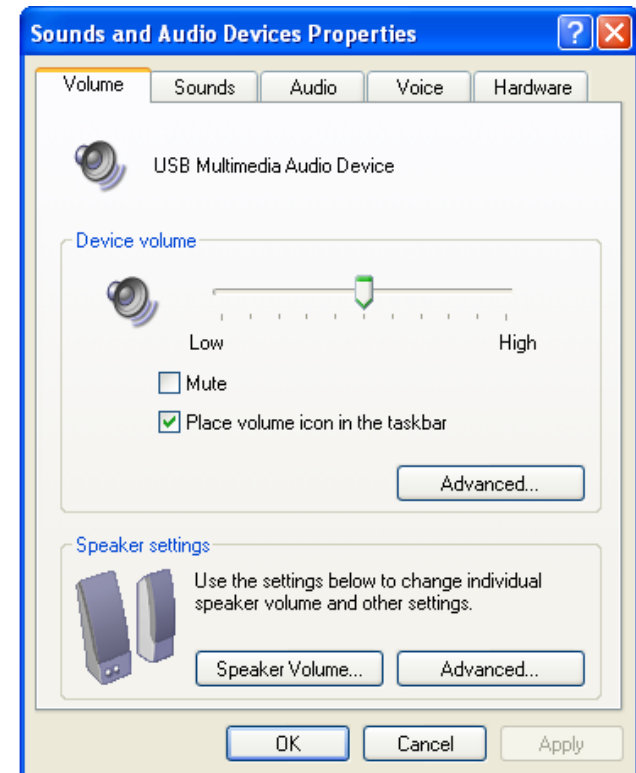
AUDIO SETTINGS

Upon connecting the Wireless VGA with Integrated Audio Adapter, your audio output from your PC will be defaulted through it at 50% listening level.

By right-clicking on the audio icon in the systems icon tray, you can go to **Adjust Audio Properties** to make any audio adjustments as you would with any audio projection device.



That will open up the **Sounds and Audio Devices Properties** screen and here you can make any adjustments. The name given to the audio output through the Wireless VGA with Integrated Audio Adapter is **USB Multimedia Audio Device**.



USING THE WIRELESS USB TO VGA WITH INTEGRATED AUDIO KIT

WIRELESS USB HOST ADAPTER SELECTION

The “**HOST**” button on the Wireless USB to VGA with Integrated Audio Kit is used to switch between Wireless USB Host Adapters. By pressing this button, the Wireless USB to VGA with Integrated Audio Kit will look for the next associated Wireless USB Host Adapter in its list and connect to it. The 1-2-3 lights indicate which host is connected and will move position based on which host is currently associated. The LED scheme is as follows:

	Light	Light	Light
User 1	On	Off	Off
User 2	Off	On	Off
User 3	Off	Off	On
User 4	On	On	Off
User 5	Off	On	On
User 6	On	Off	On

USING THE WIRELESS USB TO VGA WITH INTEGRATED AUDIO KIT

Wireless USB to VGA with Integrated Audio Adapter Reset

To erase all Wireless USB Host Adapters associated to your Wireless USB to VGA with Integrated Audio Adapter, hold down the “RESET” button for 10 seconds. This will cause the Wireless USB to VGA with Integrated Audio Adapter to erase all Wireless USB Host Adapters that have been associated from its list. A Wireless USB Host Adapter will then have to be re-associated with the Wireless USB to VGA with Integrated Audio Adapter using one of the association processes (cable or pin association) in order to connect to it again.

USING THE WIRELESS USB TO VGA WITH INTEGRATED AUDIO KIT

WIRELESS USB MANAGER

The Wireless USB Manager is simple and easy to use interface to manage your Wireless USB devices and control your Wireless USB Host Adapter settings. The Wireless USB Manager can be accessed via Wireless USB Manager Icon in the Windows tray (Figure: Wireless USB Manager Icon).



Figure: Wireless USB Manager Icon

To launch the Wireless USB Manager, double click on the Wireless USB Manager icon. In the main pane, you can find an icon representing your Wireless USB Device Adapter. If your Wireless USB Device Adapter is not connected, the icon will be gray (Figure: Wireless VGA with Integrated Audio Adapter Not Connected). If your Wireless USB Host Adapter is connected and ready to work, the icon will change color and show signal strength (Figure: Wireless VGA with integrated Audio Adapter Connected-next page).

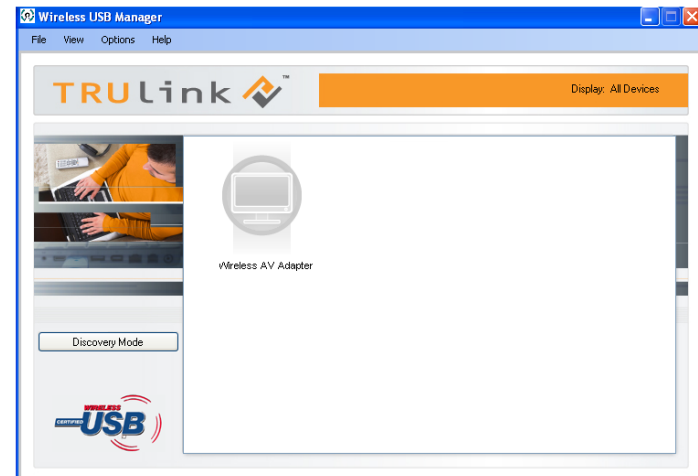


Figure: Wireless VGA with Integrated Audio Adapter Not Connected

USING THE WIRELESS USB TO VGA WITH INTEGRATED AUDIO KIT

The **VIEW** menu will give the option of what type of devices you wish to display (All Devices, Connected Devices and Not Connected Devices).

The **OPTIONS** menu will give the option to launch Host Settings window and turn the Wireless USB Host Adapter radio on or off.

The **HELP** menu offers quick help on how to connect devices to your Wireless USB Host Adapter.

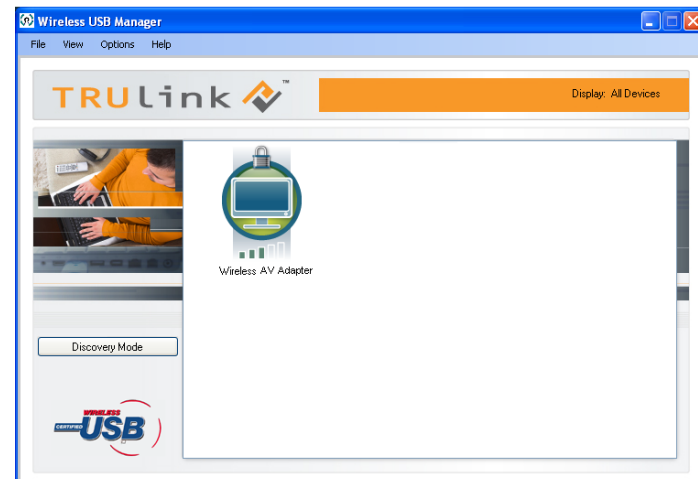


Figure: Wireless VGA with Integrated Audio Adapter Connected

USING THE WIRELESS USB TO VGA WITH INTEGRATED AUDIO KIT

To manage the Wireless USB Host Adapter settings, either select “Host Settings” in the “Option” menu of the Wireless USB Manager application or right click on the Wireless USB Manager icon in the Windows tray.

GENERAL TAB (Figure: Host Settings – General)

1. Enable this Wireless USB radio: turn on or off the Wireless USB radio.
2. Host name: Change the name of your Wireless USB Host Adapter.
3. Cable association connection rules*: Always, Never or Ask me each time. By default Wireless USB will ask you each time you cable associate.

*Note that the cable association function is NOT needed to run your kit. This function will be used if you purchase additional Wireless USB devices.

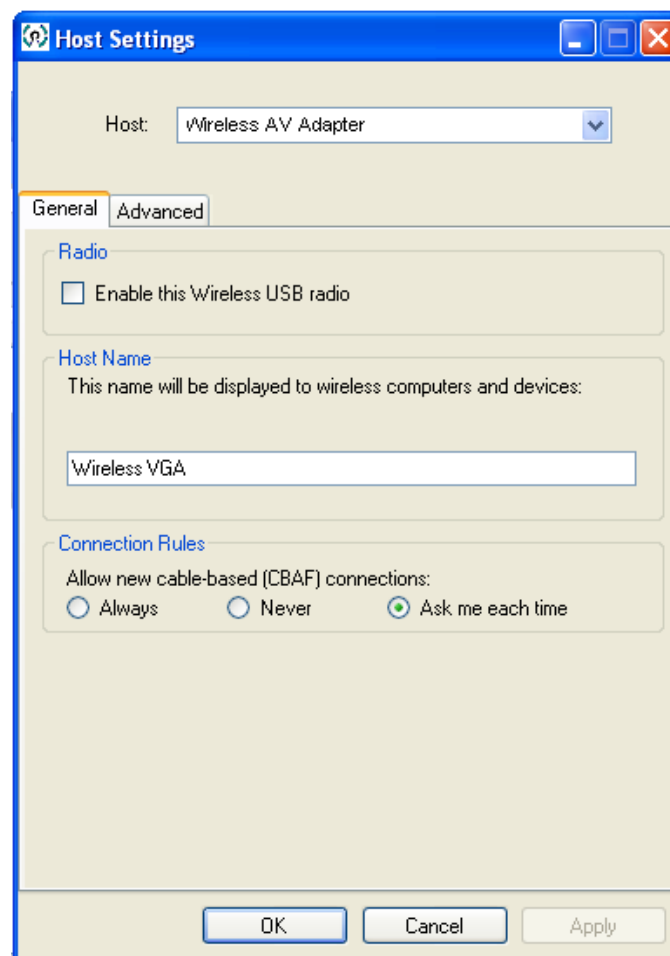


Figure: Host Settings - General

USING THE WIRELESS USB TO VGA WITH INTEGRATED AUDIO KIT

ADVANCED TAB (Figure: Host Settings – Advanced)

1. Channel selection: this function allows you to set manually a radio channel for the wireless communication (combination of Band Group and Channel). For optimal performance, the automatic setting is recommended.

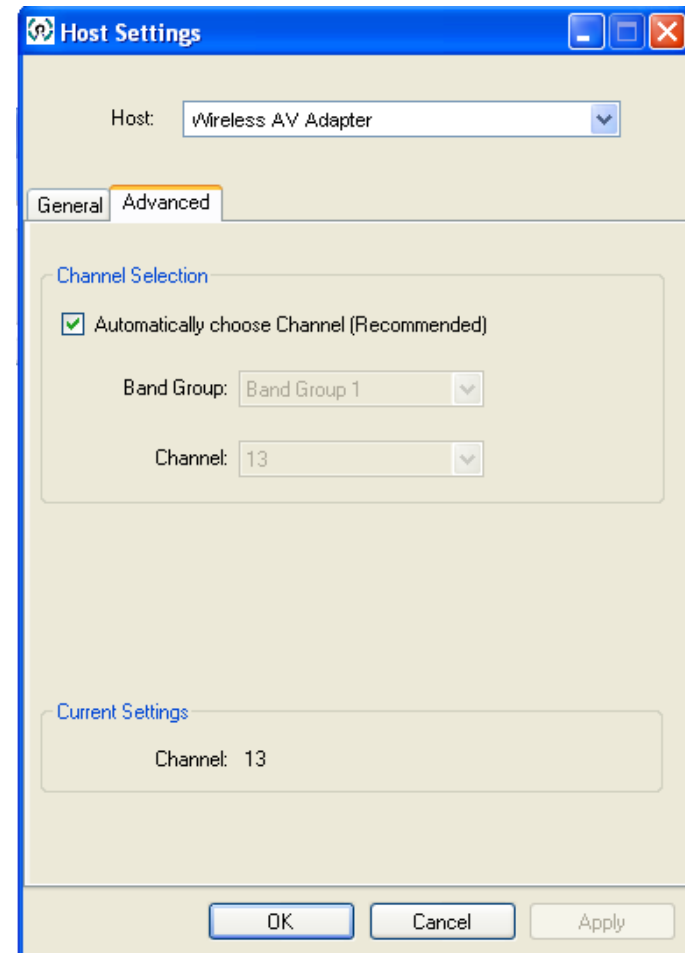


Figure: Host Settings - Advanced

FREQUENTLY ASKED QUESTIONS

1. **Why can't I install .NET?**

You may have an older version of .NET, preventing the newer one from being installed. Using Add/Remove Programs or Programs and Features on the Control Panel, uninstall any version of Microsoft .NET Framework™ older than version 3.0. Then install Microsoft .NET Framework™ from the Wireless USB to VGA with Integrated Audio Kit installer.

2. **My Wireless USB Host Adapter is plugged into my computer and my Wireless USB to VGA with Integrated Audio Adapter is powered but I do not see anything on my display. What's wrong?**

Check the Wireless USB Manager to see if there is an icon for your Wireless USB to VGA with Integrated Audio Adapter. If there is no icon, try unplugging and then plugging in your Wireless USB Host Adapter to reload the Wireless USB to VGA with Integrated Audio Adapter.

If you see an icon that is gray in the Wireless USB Manager, try resetting the Wireless USB to VGA with Integrated Audio Adapter by unplugging its power and plugging it back in. You should see the icon in the Wireless USB Manager appear in color when it is connected.

If both Activity Indicators are lit on the Host Adapter and VGA with Audio Adapter, check your icon tray and make sure that the DisplayLink Manager is there. If you do not see the DisplayLink Manager icon, the DisplayLink software is not active. You will need to reboot your computer, and when it restarts the software will finish its installation.

FREQUENTLY ASKED QUESTIONS

Still not connected?

Try adjusting the resolution from the DisplayLink Manager. Some displays such as television type displays can be recognized as a default monitor and therefore your PC may set it as a default 1280x1024 which can be too high for the monitor. If your monitor is not capable of displaying that resolution, you will need to lower the setting.

3. I don't see all the resolutions available through the DisplayLink Manager. Why is this?

Note all displays have the same capabilities. Computer monitors will typically have the capability for the PC to recognize its capable resolutions. HDTVs may not have this capability built in through its PC input, so if you are connecting to this type of display, only some of the resolutions may appear in the resolution drop down selection in the DisplayLink Manager.

4. Why is my video choppy?

If you are experiencing choppy video, try changing the channel (please refer to your Wireless USB Host Adapter settings for this) or move in your computer closer to the display. Also, make sure your PC meets the recommended requirements for the type of video application you are using.

Video playback at full screen is only recommended at resolutions 1280x720 or less. To avoid choppy video, scale the resolution back to 1280x720 or lower. This can be done through the DisplayLink Manager.

FREQUENTLY ASKED QUESTIONS

- 5. I see a blue screen or my desktop background on my display connected with the Wireless USB to VGA with Integrated Audio Kit, but no icons. Is something wrong with my unit?**

No, your unit is working properly. The default setting of this device will extend your desktop on the additional display. With this function, you can grab icons or open applications on that display to make your overall viewing space larger. The setting can be changed to Mirror mode, and with this, you can duplicate the image from your main display or laptop screen to the additional display.

- 6. I am having issues transmitting video during DVD playback when using Windows Media Player. Is my unit not working properly? If it is, can this be fixed?**

Your unit is working properly. Although Windows Media Player works, it does not react well for all scenarios. Windows Media Player will only work on the display connected with the Wireless USB to VGA with Integrated Audio Kit, when you make this your primary display. To make it your primary display, you should go to the “Settings” tab in your Windows Display Properties and click the DisplayLink Device monitor, and check “Use this device as the primary monitor”. Then go to your primary monitor and if “Extend my Windows desktop on the monitor” is checked, uncheck this option. Your image should now transmit to the display connected with the Wireless USB to VGA with Integrated Audio Kit. Please note, this

setup will not allow use of the original display. We recommend using a DVD based playback software if possible (i.e. PowerDVD, WinDVD) as these players have less playback issues, and your wireless display does not have to be primary.

FREQUENTLY ASKED QUESTIONS

7. I am trying to play back a DVD on my extended display, but am getting no picture.

Playback of protected content is not supported by this product, which means some DVD players and all Blu-ray players will not display video when connected through your display.

8. My Wireless USB Host Adapter is plugged into my computer but I do not hear anything out of my speakers when connected through the Wireless VGA with Integrated Audio Adapter. What's wrong?

Check the Wireless USB Manager to see if there is an icon for your Wireless VGA with Integrated Audio Device Adapter. If there is no icon, try unplugging and then plugging in your Wireless USB Host Adapter to reload the Wireless VGA with Integrated Audio Adapter.

If you see an icon that is gray in the Wireless USB Manager, try resetting the Wireless VGA with Integrated Audio Adapter by unplugging its power and plugging it back in. You should see the icon in the Wireless USB Manager appear in color when it is connected.

Still not connected?

If you are using an audio source such as an A/V receiver, make sure the receiver is on the right input channel or attempt troubleshooting with your audio output device equipment.

VIDEO PLAYBACK TIPS

1. We only recommend playing back video in “Extend” mode.
2. Don’t switch between “Mirror” and “Extended” modes while video is being played on the wireless display. Doing this can confuse the video player which may cause it to stop its playback. We recommend stopping playback, and then switching viewing modes if needed. Then you can restart your playback.
3. Avoid dragging video while playing from one display to another. The video may stop playback if this is done. To void this potential issue, open your media player on the wireless display, close the media player, and then re-open it. When you re-open it, the media player should open on the wireless display. From here, you can start playback of your video.
4. Avoid changing the resolution of the wireless display while a video is being played back, as this can cause the image to move to another screen if one is connected.
5. If you experience issues with QuickTime movie trailers, the solution is to disable DirectX in the QuickTime options menu. This can be found in the “Advanced” tab in the QuickTime player plug in settings.
6. If you are using a notebook, the power plan settings should be set to “High Performance” mode or similar depending on what operating system you are using, to ensure that you will have all the necessary CPU resources available.

Please visit our website for these and other tips and frequently asked questions.
www.cablestogo.com

TECHNICAL SPECIFICATIONS

Systems Information

Operating System
Support: Microsoft XP 32-bit; Microsoft Vista 32-bit/64-bit
Operating Range: Up to 30 feet (10 meters)
PHY Data Rate: 53.3Mbps, 80Mbps, 106.6Mbps, 160Mbps, 200Mbps, 320Mbps, 400Mbps, 480Mbps
PHY Compliance: WiMedia 1.0 MAC & 1.1 PHY compliant & support for 1.2 PHY
Frequency: 3.1GHz to 4.8GHz (WiMedia Band Group 1); 6.336~7.920 GHz (WiMedia Band Group 3)
RF Modulation Type: QPSK/DCM
Number of Channels: 7 Channels (3 FFI + 4 TFI)
USB Specification: Certified Wireless USB 1.0
Security: AES 128-bit
Antenna Type: Omni-directional; SMA + I-PEX Dipole Antenna 81XXAA15.G05 (Type-A)

Wireless USB to VGA with Integrated Audio Adapter Specs

Chipset: RTU 7105 Module; DisplayLink DL-165G-video
Interface: USB 2.0 mini-B female for wired association method; HD15 female video output; 3.5mm Stereo output
Video Resolution: 800x600 ~ 1920x1080
Video Streaming: Up to 720p (720p only available at resolution 1280x720 or lower)
Screen Mode: Extended and Mirror mode
Color Depth: 32-bit True Color
Audio Output: 2 CH DAC output
Audio Sample Rate: 8KHz, 16KHz, 44.1KHz to 48KHz with 16-bit resolution
Association Mode: Pre-Association, Cable Association and PIN Association;
Stores up to 16 associated hosts
Native Mode: For playback of high resolution video
Reset Switch: Used for erasing association history by pressing and holding the button for 10 seconds

Environmental Specs

Work Environment: Operation Temperature: 10~40 degrees (Celsius)
Storage Temperature: -10~60 degrees (Celsius)

Power Information

Power Consumption: 3.3W
Max Output Power: -41.3 dBm/MHz
Power Adapter: 5V, 2.5A; 100-240VAC 50-60Hz 0.5A

TECHNICAL SPECIFICATIONS

Wireless USB Host Adapter Specs

Chipset: RTU 7012; RTU 7300
Interface: USB 2.0 type A
Antenna: Omni-directional; SMA + I-PEX Dipole Antenna 81XXAA15.G05 (Type-A)
Power Mode: Bus-powered

Environmental Specs

Work Environment: Operation Temperature: 10~40 degrees (Celsius)
Storage Temperature: -10~60 degrees (Celsius)

Power Information

Operating Power: 203 mA
Suspend Mode
Power: 170mA

Certification: CE/FCC/WUSB-IF

CABLES TO GO™ WARRANTY STATEMENT

At Cables To Go, we want you to be totally confident in your purchase. That is why we offer a one year warranty on this device. If you experience problems due to workmanship or material defect for the duration of this warranty, we will repair or replace this device. To request a Return Merchandise Authorization (RMA) number, contact customer service at 1-800-293-4970 or www.cablestogo.com.



Cables To Go
3555 Kettering Blvd.
Moraine, OH 45439
1-800-826-7904
www.cablestogo.com

FCC STATEMENT

This equipment has been tested and found to comply with the limits for a Class B digital device, pursuant to Part 15 of the FCC Rules. These limits are designed to provide reasonable protection against harmful interference in a residential installation. This equipment generates, uses and can radiate radio frequency energy and, if not installed and used in accordance with the instructions, may cause harmful interference to radio communications. However, there is no guarantee that interference will not occur in a particular installation. If this equipment does cause harmful interference to radio or television reception, which can be determined by turning the equipment off and on, the user is encouraged to try to correct the interference by one of the following measures:

- Reorient or relocate the receiving antenna.
- Increase the separation between the equipment and receiver.
- Connect the equipment into an outlet on a circuit different from that to which the receiver is connected.
- Consult the dealer or an experienced radio/TV technician for help.

FCC Caution: Any changes or modifications not expressly approved by the party responsible for compliance could void the user's authority to operate this equipment.

This device complies with Part 15 of the FCC Rules. Operation is subject to the following two conditions: (1) This device may not cause harmful interference, and (2) this device must accept any interference received, including interference that may cause undesired operation.

This device and its antenna(s) must not be co-located or operation in conjunction with any other antenna or transmitter.

A UWB device operating under the provisions of this section shall transmit only when it is sending information to an associated receiver. The UWB intentional radiator shall cease transmission within 10 seconds unless it receives an acknowledgement from the associated receiver that its transmission is being received. An acknowledgement of reception must continue to be received by the UWB intentional radiator at least every 10 seconds or the UWB device must cease transmitting.

Notify Body of Approval-CE0700

IMPORTANT SAFETY INFORMATION

! Do not plug the unit in any outlet that does not have enough current to allow the device to function. Refer to the specifications in this manual for power level of the unit.

! Liquid:

If this unit or its corresponding power adapter has had liquid spilled on or in it, do not attempt to use the unit. Do not attempt to use this product in an outdoor environment as elements such as rain, snow, hail, etc. can damage the product.

! In case of a storm, it is recommended that you unplug this device from the outlet.

! Avoid placing this product next to objects that produce heat such as portable heaters, space heaters, or heating ducts.

! THERE ARE NO USER SERVICEABLE PARTS

Do not attempt to open this product and expose the internal circuitry. If you feel that the product is defective, unplug the unit and refer to the warranty information section of this manual.

©2009 Cables To Go. Microsoft, Windows and Vista are either registered trademarks or trademarks of Microsoft Corporation in the United States and/or other countries. This product is not endorsed or manufactured by Microsoft Corporation.

APPENDIX

ASSOCIATION WITH OTHER DEVICES

ASSOCIATION CONCEPT

In order to establish a secure wireless connection, both your Wireless USB Host Adapter and the Wireless VGA with Audio Adapters must exchange information about each other. This is done via cable or PIN association.

ASSOCIATION PROCESS

If you purchase additional Certified Wireless USB host adapters, such as the TruLink Wireless USB Host Adapter, you will need to associate them with your Wireless VGA and Audio Device Adapter. Refer to your Wireless USB device documentation for more information on its settings for association or try contacting the product's manufacturer for assistance if needed.

APPENDIX

CABLE ASSOCIATION PROCEDURE

Cable association steps. Examples/Figures shown are used with the association of the TruLink Wireless USB to VGA with Integrated Audio Kit.

1. Make sure that the Wireless USB host adapter utility is running. Check your Windows tray for the Wireless USB Manager icon (**Figure: Wireless USB Manager**).
2. Make sure the WIRELESS/WIRED switch is in the WIRELESS position on the Wireless USB to VGA with Integrated Audio Adapter.
3. Plug in the power adapter for your TruLink Wireless USB to VGA with Integrated Audio Adapter.
4. Connect the USB cable between an available USB port on your computer and your Wireless USB to VGA with Integrated Audio Adapter.
5. Complete cable association by pressing the “Accept Association” button when prompted (**Figure: Cable Association**).
6. Remove the USB cable from your Wireless VGA with Integrated Audio Adapter and computer.

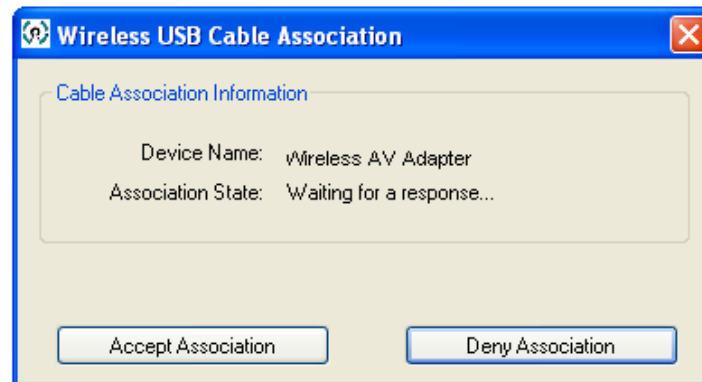


Figure: Cable Association

APPENDIX

Associated Certified Wireless USB Devices will appear as icons in the Wireless USB Manager. When the Certified Wireless USB devices are connected, the icon will appear in color (Figure: TruLink Wireless VGA with Integrated Audio Adapter Connected).

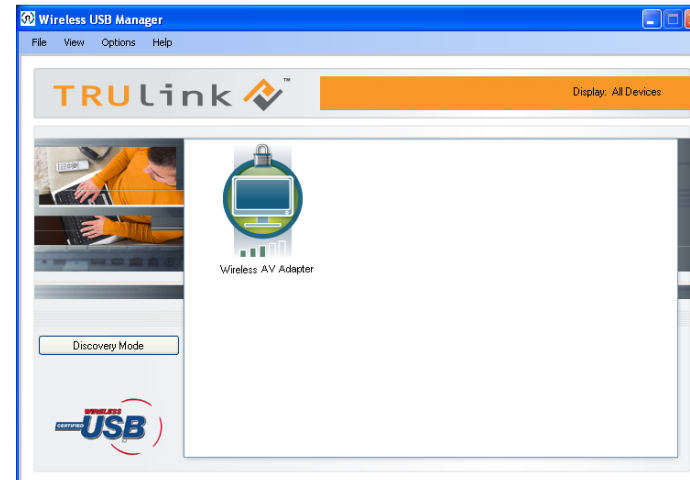


Figure: TruLink Wireless VGA with Integrated Audio Adapter Connected

Note: You may rename or delete the Wireless USB Device by right-clicking the device icon in the Wireless USB Manager and select “**rename**”. You can also delete a wireless device adapter association by selecting “**delete**”.

APPENDIX

PIN ASSOCIATION PROCEDURE

PIN association steps: Examples/Figures shown are used with the association of the TruLink Wireless USB to VGA with Integrated Audio Kit.

1. Make sure your Wireless USB to VGA with Integrated Audio Adapter is powered on and your Wireless USB Host Adapter is connected to your computer. Click the “Discovery Mode” button (Figure: Discovery Mode Screen).

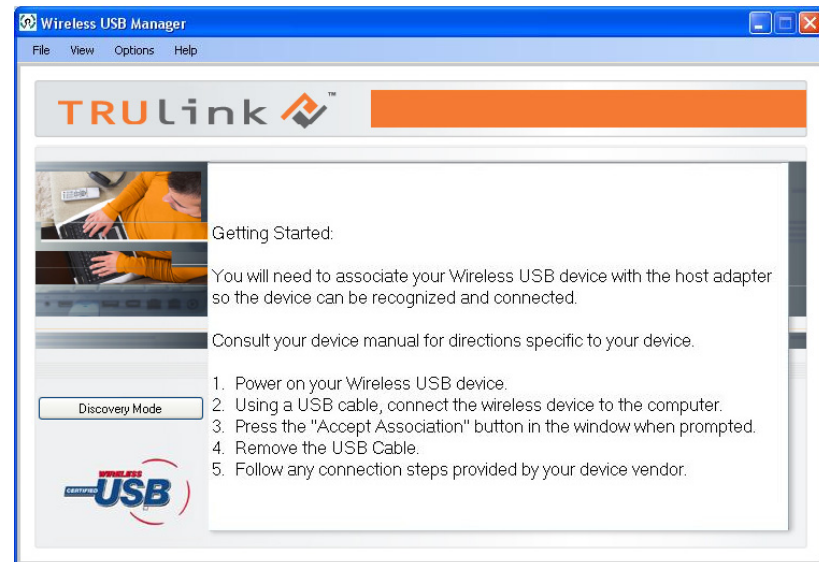


Figure: Discovery Mode Screen

APPENDIX

2. The Wireless USB Host Adapter will search for the Wireless USB to VGA with Integrated Audio Adapter within its range. Note that this operation can take up to 20 seconds (Figure: Discovery Mode in Process).

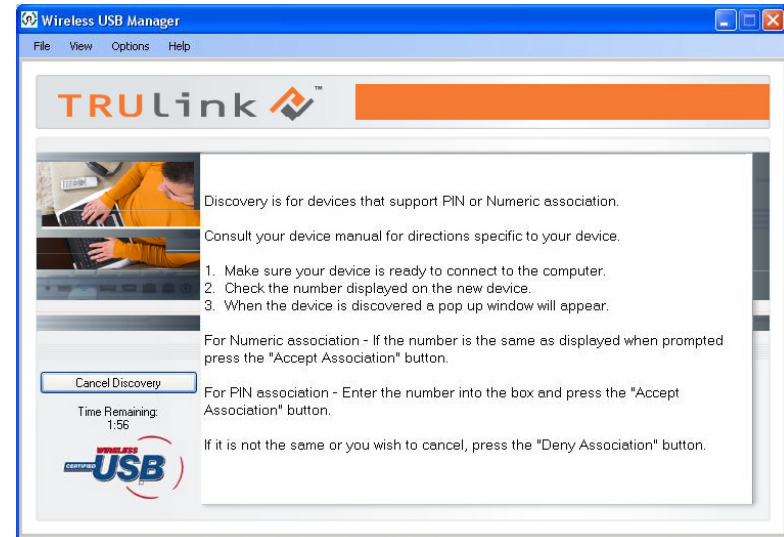


Figure: Discovery Mode in Process

3. Once the Wireless USB Host Adapter and the Wireless USB to VGA with Integrated Audio Adapter have exchanged security information, the following dialog will appear.



Figure: Pin Association Entry

APPENDIX

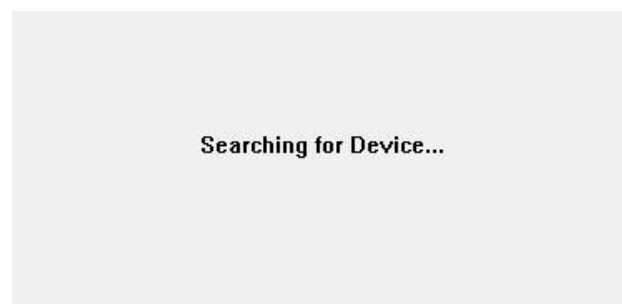
4. Enter the PIN of the Wireless USB to VGA with Integrated Audio Adapter (4-digit PIN) and click “**Accept Association**”. The Wireless USB to VGA with Integrated Audio Kit and Wireless USB Host Adapter are now associated and ready for operation.

PIN CHANGE PROCEDURE

The default PIN setting for the Wireless VGA and Audio Device Adapter is “1234”. This section gives you the instructions to change the PIN to another 4-Digit value.

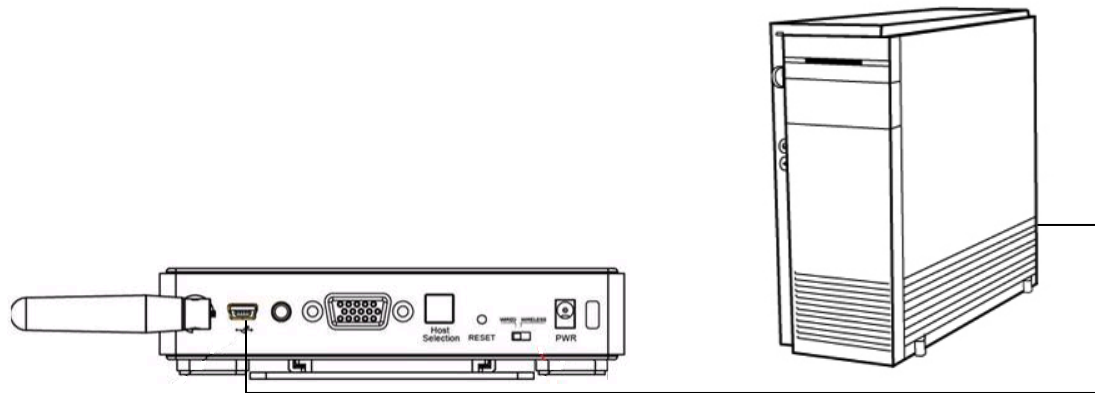
IMPORTANT: The application used to change the PIN is not supported in Vista 64bit.

1. Make sure your Wireless USB Host Adapter and the Wireless VGA with Integrated Audio Adapter is not connected to your computer.
2. Open/Launch the application “Pin Update” (C:\Program Files\Wireless USBManager\Utility\PINUpdate). The following dialog will appear:



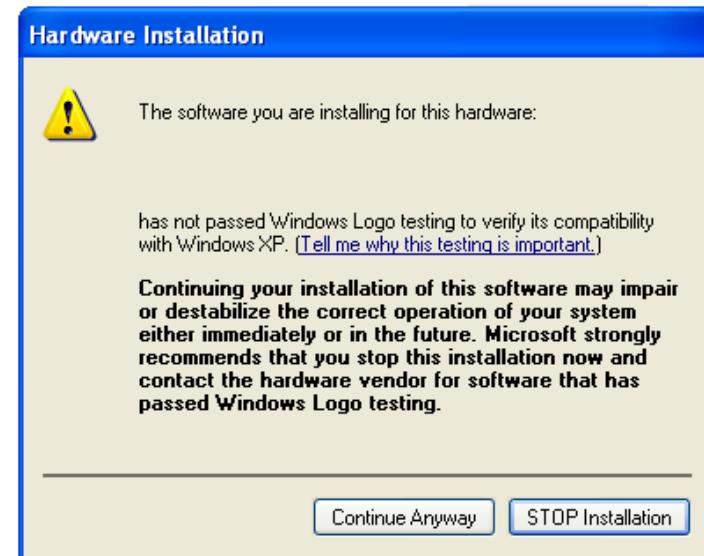
APPENDIX

3. Make sure the WIRELESS/WIRED switch on your Wireless USB to VGA with Integrated Audio Adapter is in the WIRELESS position and the power cable is plugged in your Wireless USB to VGA with Integrated Audio Kit. Connect the USB cable between your Wireless USB to VGA with Integrated Audio Adapter and any available USB port on your computer while the **Searching for Device** box is visible.

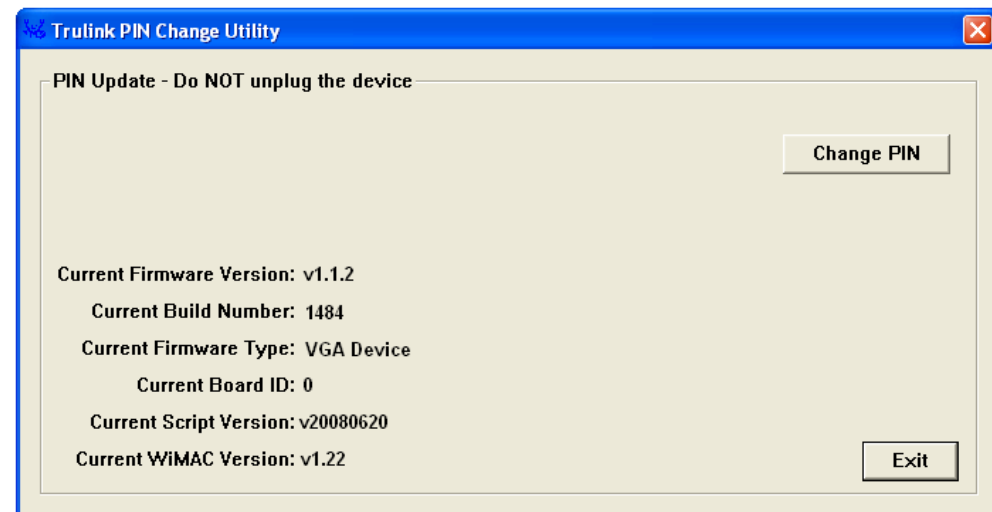


APPENDIX

4. Click Install this driver software anyway.

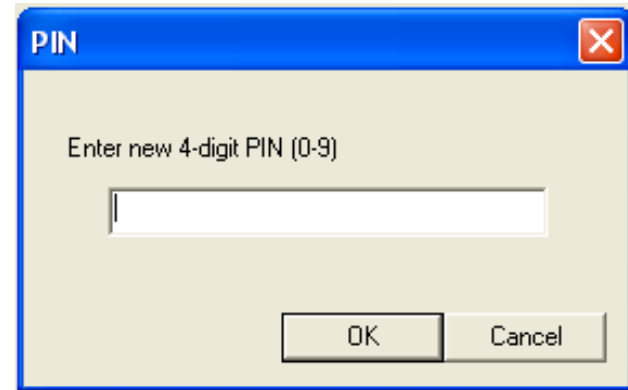


5. To change pin, click "Change PIN"



APPENDIX

6. Enter a 4-Digit PIN (0-9) and click OK.



7. If your PIN is valid, a window displaying your new PIN will appear. Press OK. Your PIN has been successfully changed. **IMPORTANT:** please exit the Trulink PIN Utility application (Exit button as shown on figure in step 5) before unplugging your Wireless USB to VGA with Integrated Audio Adapter from your PC.

For more information on this product or to check for updated drivers, manuals or frequently asked questions please visit our website.

www.cablestogo.com



VER. 1.0.11.30.09