

Web Tablet

USER GUIDE

Revision 1.0

REGULATORY NOTICES

Federal Communications Commission Notice

This equipment has been tested and found to comply with the limits for a Class B digital device, pursuant to Part 15 of the FCC Rules. These limits are designed to provide reasonable protection against harmful interference in a residential installation. This equipment generates, uses, and radiates radio frequency energy and, if not installed and used in accordance with the instructions, may cause harmful interference to radio communications. However, there is no guarantee that interference will not occur in a particular installation.

CAUTION!



CAUTION! Danger of explosion if an improper battery is substituted. If a replacement is needed, only replace with a manufacturer issued battery pack.



Do not dispose of the battery pack in a fire. They may explode. Check with local authorities for proper disposal instructions.

ESD WARNING!

The USB function may be break down during electrostatic discharge interference. Please suspend or reset the system to enable the USB function.

TABLE OF CONTENTS

1. Getting Started

- 1.1 [Welcome](#)
- 1.2 [Safety Instructions and Care of your Web Tablet](#)
- 1.3 [Checklist](#)
- 1.4 [Getting to Know Your Web Tablet](#)
- 1.5 [The Battery and AC Adapter](#)
- 1.6 [The Stylus](#)
- 1.7 [Using the PCMCIA and CompactFlash Cards](#)
- 1.8 [Web Tablet Buttons](#)
- 1.9 [Display Properties](#)
- 1.10 [The Cradle \(Optional\)](#)

2. Managing Your Information

- 2.1 [Data Input](#)
 - [Handwriting](#)
 - [Software Keyboard](#)
 - [External Keyboard](#)
- 2.2 [Data Synchronization](#)
- 2.3 [Applications](#)
 - Task Manager
 - Launch Dial
 - MP3 Player
 - Voice Recorder
 - Picture Viewer
 - Ink Memo
 - Calculator
 - Primer
 - PTab
 - Pocket On-Schedule
 - Note Pad
 - Pocket Word
 - Windows Media Player
 - Internet Explorer

3. Connecting Other Devices

- 3.1 [USB Keyboard or Mouse](#)
- 3.2 [External Microphone](#)
- 3.3 [External Speakers](#)
- 3.4 [External Display](#)

4. Getting Online

- 4.1 [Establishing a Dial-up Connection](#)
- 4.2 [Connecting to Your Network](#)
- 4.3 [Ending a Connection](#)
- 4.4 [Setting up Your Email](#)

5. Troubleshooting

- 5.1 [Common Problems / Frequently Asked Questions](#)
- 5.2 [Handwriting Guide](#)

Appendix A: [Specifications](#)

USER GUIDE



1. Getting Started

1.1 Welcome

Congratulations! With your new Web Tablet you will be able to create, manage and share information, send and receive email, and carry out research from virtually anywhere! Your Web Tablet gives you freedom; easy access to the Internet, and the 800X600 SVGA screen offers high resolution for all your Tablet uses.

This manual will guide you through the Tablet's simple set-up, introduce you to its range of features and help you source extra information.

1.2 Safety Instructions and Care of your Web Tablet

-  **CAUTION!** Danger of explosion if an improper battery is substituted. If a replacement is needed, only replace with a manufacturer issued battery pack.
- During normal usage and charging, the battery pack heats up. This is caused by energy that has been generated and a chemical charge that has occurred inside the battery pack. This is not cause for concern.
 - You should charge batteries at temperatures from 10°C to 30°C (from 50 °F to 85 °F). Lower temperatures require a longer charging time.
 - Do not carry a battery in your pocket, purse, or other container where metal objects could short-circuit the battery pack. The resulting excessive current flow can cause extremely high temperatures and may result in damage from burns.
 - Do not use your Web Tablet in a wet environment, for instance, near a bathtub, sink, or any other place where there is risk of moisture.
 - To help prevent electric shock, plug the AC adapter into a three prong, grounded power source. If a two-prong extension plug is absolutely needed, use a 3-wire cable with properly grounded plugs.
 - If your Web Tablet includes a modem PC Card, disconnect the modem cable during electrical storms to avoid the remote risk of electrical shock from lightning via the telephone line.
 - PC Cards may increase in temperature over an extended period of use. Use care in handling these cards.
-  Do not dispose of the battery pack in a fire. They may explode. Check with local authorities for proper disposal instructions.
- When traveling, never check your Web Tablet as baggage. You can put your Web Tablet through an x-ray security machine, but never put your Web Tablet through a metal detector. Have a charged battery with you in case you are asked to turn on the Tablet.

- When traveling, do not place the Web Tablet in an overhead compartment where it can slide around. Do not drop your Web Tablet or subject it to mechanical shocks.
- Protect your Web Tablet from environmental hazards such as dirt, dust, food, liquids, temperature extremes, and over exposure to sunlight.
- When you change environments rapidly, in respect to temperature and humidity, with your Web Tablet, condensation may form on or within the Tablet. To avoid potential damage to your Web Tablet, allow sufficient time for the moisture to evaporate before using.
- When disconnecting cables from your Web Tablet, be sure to pull on the connector or the strain relief loop, not on the cable itself. As you pull, keep it evenly aligned to avoid bending the connector pins. Never force a connector into a port. Make sure the connector and port are aligned correctly.
- Before you clean your Web Tablet, turn it off, remove the battery, and unplug the power source.
- Clean your computer with a soft cloth dampened with water rather than with liquid or aerosol cleaners.
- Clean the screen with a soft, clean cloth and commercial window cleaner that does not contain wax or abrasives. Always apply the cleaner to the cloth, not the screen. If the display contains grease or some other contaminant, use isopropyl alcohol instead of commercial cleaner.

1.3 Checklist

Check to see that the package your Web Tablet came in includes these items:

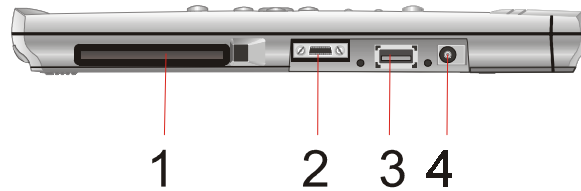
- Web Tablet
- AC Adapter
- Power Cord
- Battery Pack
- Stylus
- Utility CD
- Synchronization Cable
- Mini-VGA Cable
- Carry Bag

1.4 Getting to Know Your Web Tablet

Your Web Tablet features powerful functions and connectivity for you to create, manage and transfer your information, send and receive email and explore the World Wide Web. This section outlines your Web Tablet's components.

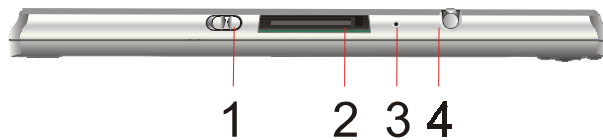
Left Side

1. PCMCIA Slot
2. Mini-VGA Connector
3. USB Connector
4. DC In Port



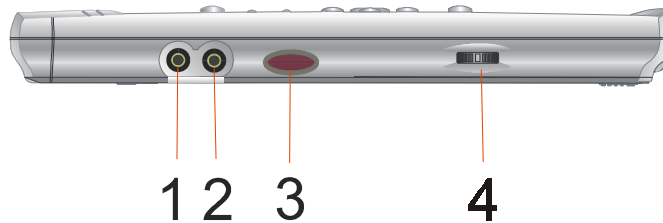
Top Side

1. On/Off Switch
2. CompactFlash Card / IBM Microdrive™ Slot
3. Software Reset Button
4. Stylus Storage



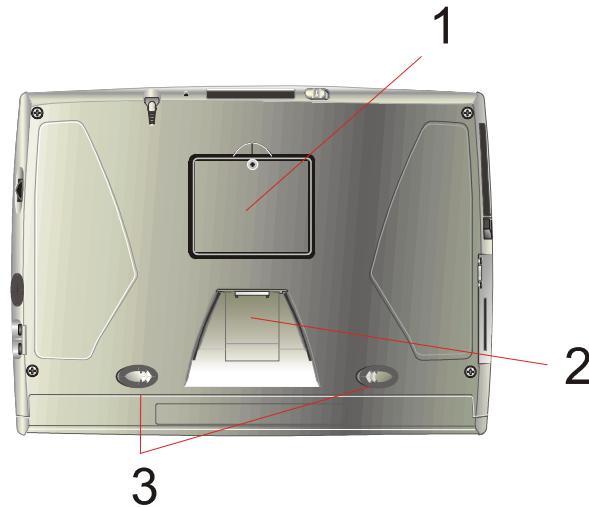
Right Side

1. External Microphone Jack
2. External Speaker Jack
3. Infrared Port (IrDA)
4. Page Up/Down Dial



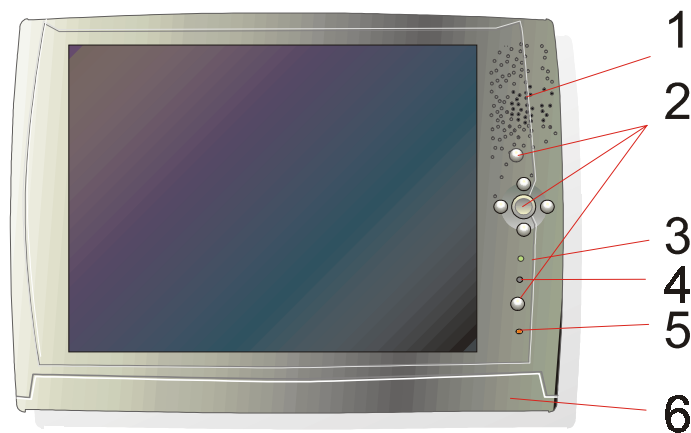
Back

1. Cover to Hardware Reset Button
2. Cradle Dock / Synchronize Cable Port
3. Battery Latches



Front

1. Speaker
2. Control Buttons
3. Power Indicator
4. Battery Indicator
5. Internal Microphone
6. Battery Pack



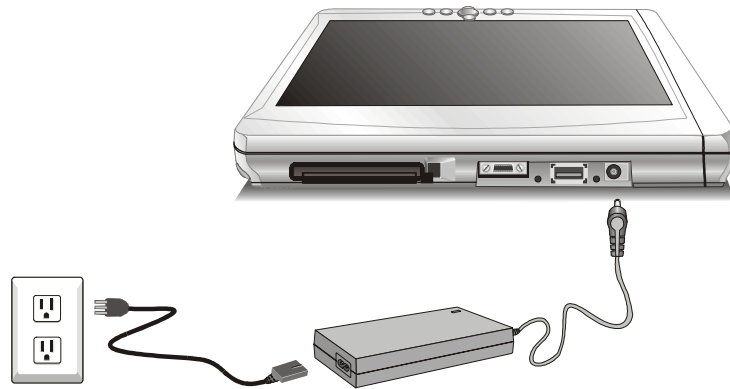
1.5 The Battery and AC Adapter

Your Web Tablet has two power sources, battery and AC. To run your Web Tablet from the wall, use the supplied AC adapter cable only. The battery offers you unplugged convenience, with as much as 5 hours of battery life, extendable to 10 hours with the optional long-life battery pack. The battery charges when the Tablet is

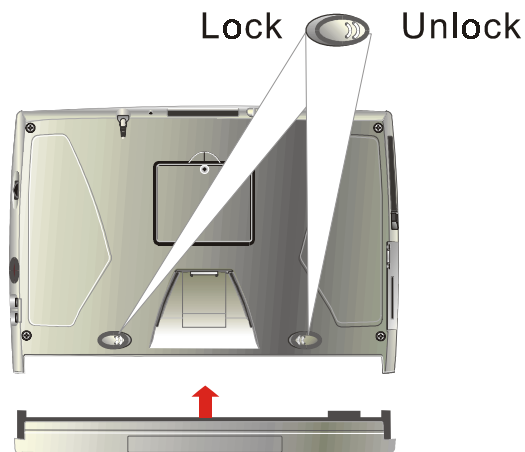
connected to the AC power. The orange indicator on the front of your Web Tablet indicates the battery's status.

Charging Time with standard battery pack: 2 hours fast charge mode (system off)
2.8 hours normal charge mode (system on)

Charging Time with long-life battery pack: 2.8 hours fast charge mode (system off)
4.6 hours normal charge mode (system on)



- Indicator orange: Battery is charging
- Indicator blinking: Low Battery (Less than 6% charge remaining)
- Indicator off: Battery is fully charged



When fully charged and not in use, your Web Tablet battery has a one week life. When turning on your Web Tablet but it goes to suspend immediately, that means the battery volume is 0%. Please charge your Tablet within one day, or you will lose all data in memory.

Please suspend your Tablet before removing or changing the battery pack and plug back the charged battery with 15 minutes, or you will lose all data in memory.

To check your battery level, or to adjust the time before your battery switches off after the Tablet is continuously idle, go to **Start→Settings→Control Panel→Power**.

For further tips on optimizing your battery, go to **Start→Help→Settings→Power**.

1.6 The Stylus

The Stylus has been specially designed for use with your Web Tablet.

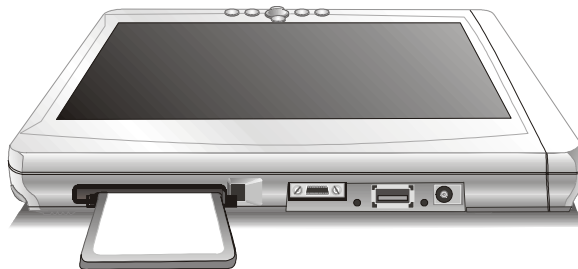


IMPORTANT: It is strongly recommended that you use the provided stylus at all times; fingers or other instruments may damage your screen.

If you find that your Web Tablet is not responding properly to your taps, you may need to recalibrate your screen. To do this, go to **Start→Settings→Control Panel→Stylus**. Once there, go to the calibration tab and follow the instructions.

Your stylus can be conveniently stored in the side of your Web Tablet.

1.7 Using the PCMCIA Slot and CompactFlash Cards



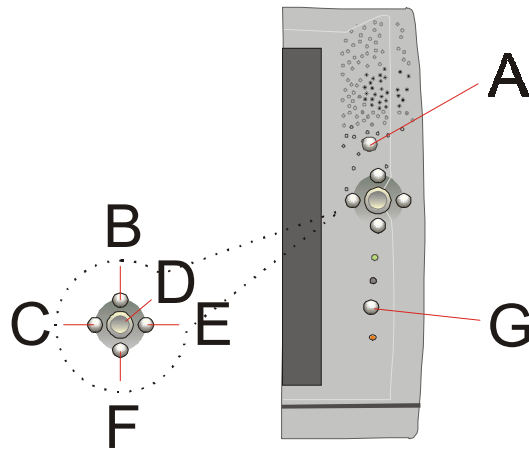
The PCMCIA slot is a universal interface for many different hardware peripherals. This slot can accommodate any PC Card that is supported by Windows CE 3.0. One of the key uses for this slot is the wireless card, which will be discussed further, later in this document.



The CompactFlash slot, shown above, is a Type II slot that can accommodate any IBM Microdrives™ and Type I and Type II CompactFlash cards that are supported by Windows CE 3.0.

1.8 Web Tablet Buttons

The buttons on the front of your Web Tablet gives you greater navigational control.



The BCEF buttons function as arrow keys, but can also be used as a mouse. These keys as well as the D key will resume the Web Tablet from 'suspend' mode.

A – Launch Dial Button – opens the launch dial program.

D – Launches the last program; acts as 'right click' or 'enter' button.

G – Toggles (B, C, E & F) between arrow key functionality and mouse functionality.

The ON/OFF switch on the side of your Web Tablet, when in the OFF position, ensures that the Tablet isn't accidentally turned on. Sliding the switch to the ON position resumes the Tablet.

The Page Up/Down switch on the side of your Web Tablet lets you easily scroll pages, including web sites and documents. Any application that uses a scroll bar can use this switch.

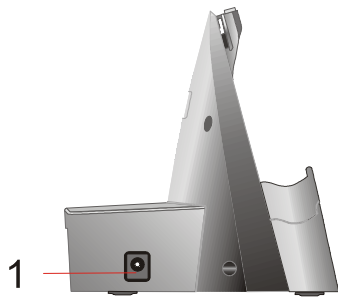
1.9 Display Properties

This function allows you to set the background on your desktop, and the colors displayed on your interface. To access these functions, go to

Start→Settings→Control Panel→Display→Background

1.10 The Cradle (Optional)

The cradle lets you ‘dock’ your web Tablet, making it easy to use your desk, to read information, or to add peripherals such as a keyboard or a mouse.



1. AC in

1. USB Ports



1



1

2

3

1. PS/2 Ports

2. USB Type B Port

3. USB Ports



In addition, the cradle increases your connectivity, with USB Type A and B (for synchronization with your PC) ports [4 A-Type and 1 B-Type] as well as PS/2 support for a keyboard and mouse. By removing the insert in the cradle's pocket (by sliding the insert to the right and lifting it up), the cradle can accommodate Web Tablets with the extended battery.


2.Managing Your Information Data Input

2.1Data Input

Your Web Tablet features a variety of data input methods, so you can choose, and change, according to your needs:

- Handwriting Recognition.
- A Software Keyboard.
- An External Keyboard.

Handwriting

Using the stylus, you can directly write onto the screen, and your data will be quickly converted. To set up the handwriting recognition, click on the  icon in our Tablet's taskbar. A floating palette will appear, and by clicking on 'Setting' you can choose how the palette looks, and where you can write on the screen. You can also select the writing speed, width of pen and the color that will appear.

When the system is in use, the  icon will appear in the taskbar.

For a guide to writing for your Web Tablet, see [Section 5.2](#).

Quick tips for better handwriting recognition:

- Spend time 'training' your Web Tablet – everyone's handwriting is individual, and it will take a short time for yours to be recognized.
- When you write on the screen, the closest letter will be selected to appear on screen. Other possibilities will appear in the boxes in the palette. If one of these is correct, click on it and it will be remembered for next time.
- You can switch between upper and lower case, numbers, and punctuation by simply clicking on the box next to 'Setting' on the floating palette. You can also use the boxes at the top of the palette.
- To correct a mistake, create a space or go to a new line, use the boxes on the palette.
- Exiting the handwriting recognition mode is as easy as tapping the handwriting recognition icon in the taskbar.

Software Keyboard

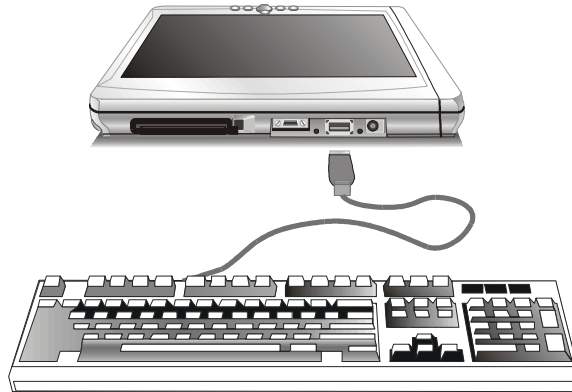
To access the Software Keyboard, click the handwriting recognition icon in the taskbar. Once this application comes up, click the keyboard icon in the top left corner of the frame.

The Software Keyboard functions like a real keyboard. The 'CAP' key locks the keys to uppercase; the 'Shift' key switches the keys to uppercase for one click only;

shortcut keys, such as 'Copy' (Ctl+C) are controlled by touching the 'Ctl', then the relevant key.

Once finished with the keyboard, click the 'Close' icon in the top right corner of the keyboard window.

External Keyboard



Attaching an external keyboard via the USB port of the Tablet, or through the cradle, overrides any other input selection. Make sure the keyboard is supported by Windows CE 3.0 or comes with Windows CE 3.0 drivers. See [Section 3.1](#).

2.2 Data Synchronization

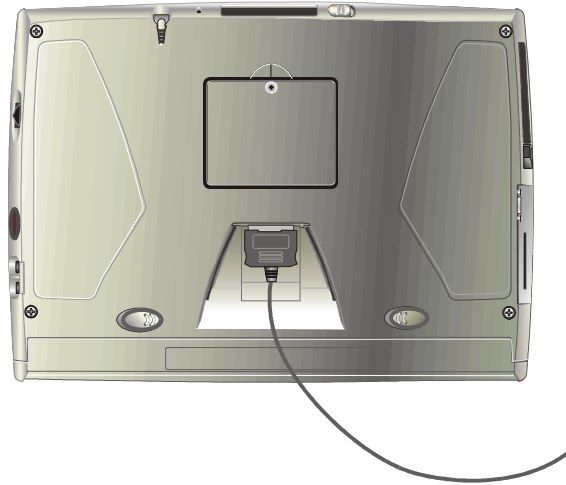
To share information between your Web Tablet and your PC/Laptop, you need to establish a direct PC Connection. There are two ways to make direct connection. The default way is through USB interface.

The installation procedure is:

1. For make the connection, you will need to install the ActiveSync 3.1 (or higher) software to your PC/Laptop. To download this freeware, go to <http://www.microsoft.com/mobile/downloads/activesync.asp>
2. Install the Pocket On-Schedule Synch software to your PC/Laptop. This software is in the bundled utility CD.
3. Using the synchronization cable to connect the PC/Laptop and Table. Both PC/Laptop and Tablet will detect the connection and launch the counterpart software to make the connection.
4. When finishing the connection, there will be a pop-up windows showing: "Set Up a Partnership". Please select "No" and "next". Now you have established the connection successfully.

Please read the read me file together with the Pocket On-Schedule synch in Utility CD to understand the detail of Pocket On-Schedule synch.

The other way to make the connection is through IrDA. To switch between connection interfaces, go to **Start→Settings→Control Panel → Communication →PC Connection**, and follow the instructions. Place your Tablet and the target device in line of sight of each other and within 1 meter apart. Then go to **Start→Programs→Communication→IR Sync** to make the connection.

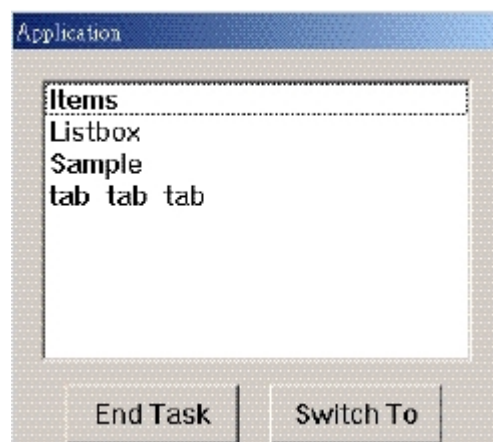


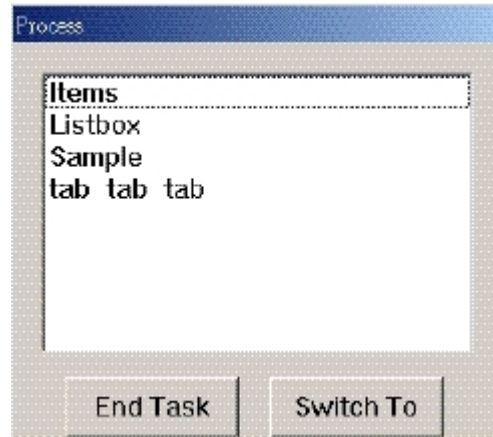
2.3 Applications

Your Web Tablet has a suite of applications designed to create, share, and manage your information.

With **Task Manager**, you can easily manage your working environment. The Application Frame lists all the current applications in use. From here, you can switch from application to application or close those that are unwanted. The Process Frame lists all applications currently performing a task, including hidden applications although these cannot be edited. Task Manager can be found by going to:

Start→Programs→Accessories→Task Manager





Launch Dial is a customizable navigation tool where you can load your favorite applications for easy access. Use the Launch Dial's arrow keys to locate your selected application on the dial, or to add or remove applications. You can move the Launch Dial anywhere on your screen, and use either the stylus or keypad to select applications. The page up/down dial on the side of your Tablet moves up or down two applications. You can launch an application by hitting the enter button or selecting OK in the Launch Dial window.

The Launch Dial has five default applications, (Internet Explorer, PocketWord, Explorer, Inbox, and PIM) along with three default icons, (Add, Delete, and Hide). Users can add up to five further applications.



Hides the Launch Dial

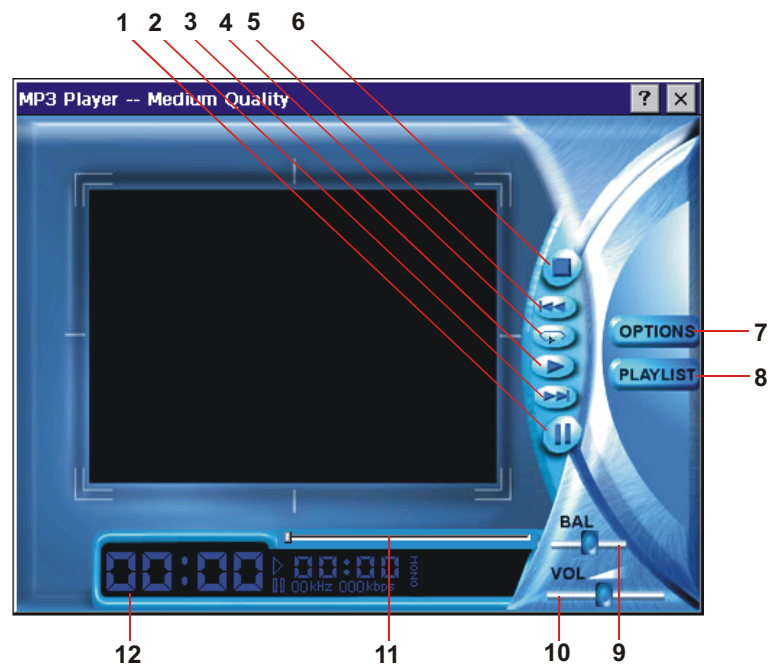


Launches a Dialogue box for the user to select an application to be added. Select the Folder the application to be added is in (the name will appear in the 'Path' window); select the application by double-clicking twice with the stylus. You can also navigate the Add Applications Dialogue box using the arrow buttons. The enter and right buttons will add the selected application to the Launch Dial, and the right button will automatically open the application. The left button skips to the upper path or exits, if the path is at the root.



Launches a Dialogue box for the user to select an application to be deleted. You may only delete applications you have added; default applications cannot be deleted. Select the application to remove, click on it twice, and the Launch Dial will re-appear without the selected application. To return to the Launch Dial without removing any applications, select "EXIT". Remove Applications can also be navigated with the arrow keys, as for Add Applications.

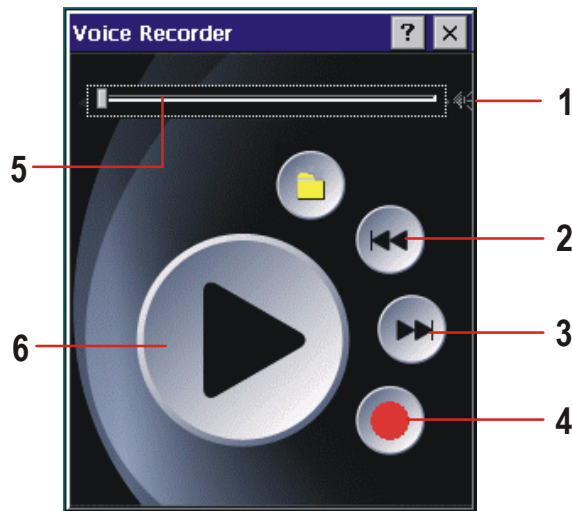
Your Web Tablet comes with an **MP3 player**, letting you quickly start playing your favorite tracks.



1. Pause
2. Next
3. Play
4. Loop
5. Previous
6. Stop
7. Options
8. PlayList Area*
9. Balance Control
10. Volume Control
11. Progress Slider
12. Track Information

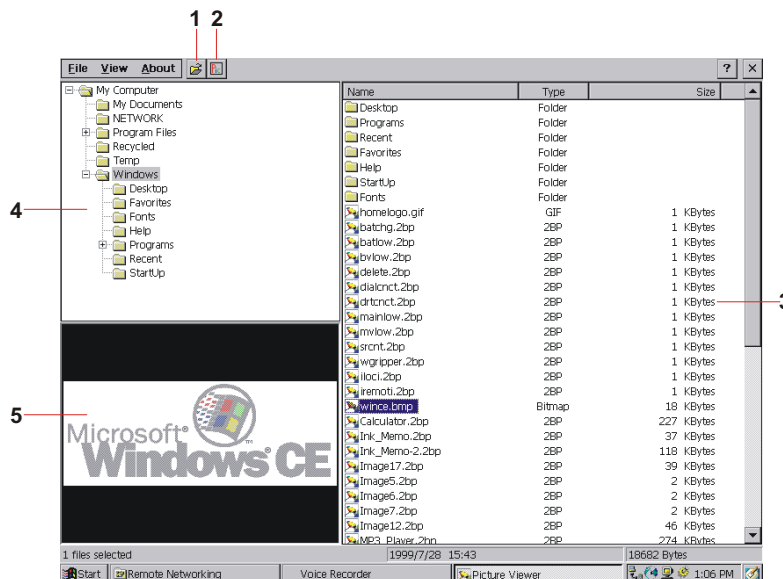
*PlayList file stores all files as displayed in the play list area in a .pls file.

Voice Recorder allows you to directly record your voice on to your Web Tablet, so you can create sound files or send voice messages. Before recording, you can set parameters, including the name of the recording, via the Properties window.



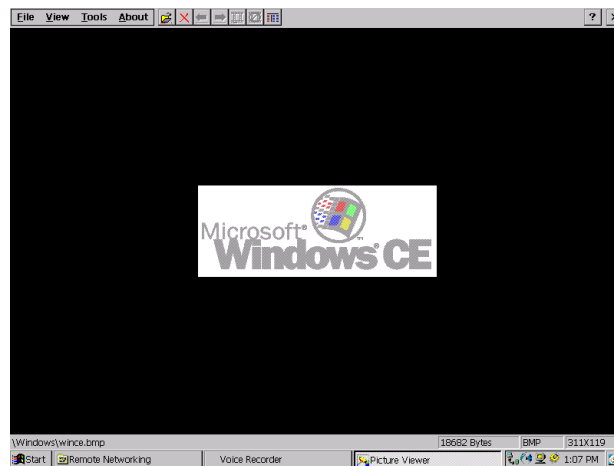
1. Volume Control
2. Previous
3. Next
4. Record/Stop
5. Progress Indicator
6. Play

Picture Viewer allows you to open picture files – Bitmap, JPEG, TIFF, and GIF files. Picture Viewer has two frames, the browser frame, with file directory, file list, and thumbnail,



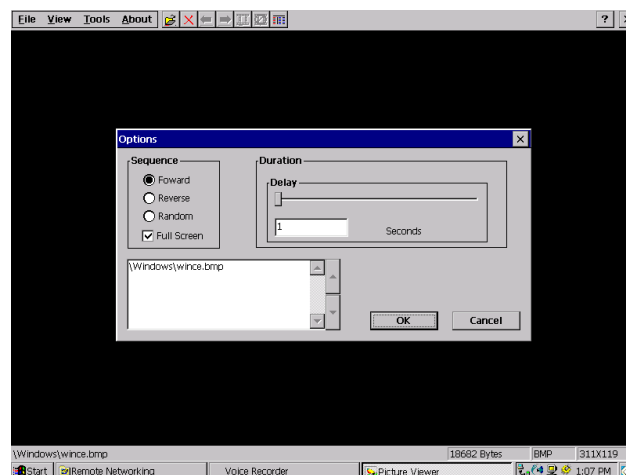
1. Open File
2. View Frame
3. File List
4. Thumbnail
5. File Directory

and a View Frame, used to display the pictures selected in the Browser Frame.



The view frame allows you to choose to shrink the image to fit on screen (**View→Shrink to fit Screen**); to use the entire screen (**View→Full Screen**). Note that Full Screen will not hide the Taskbar. To do this, go to **Start→Settings→Taskbar**.

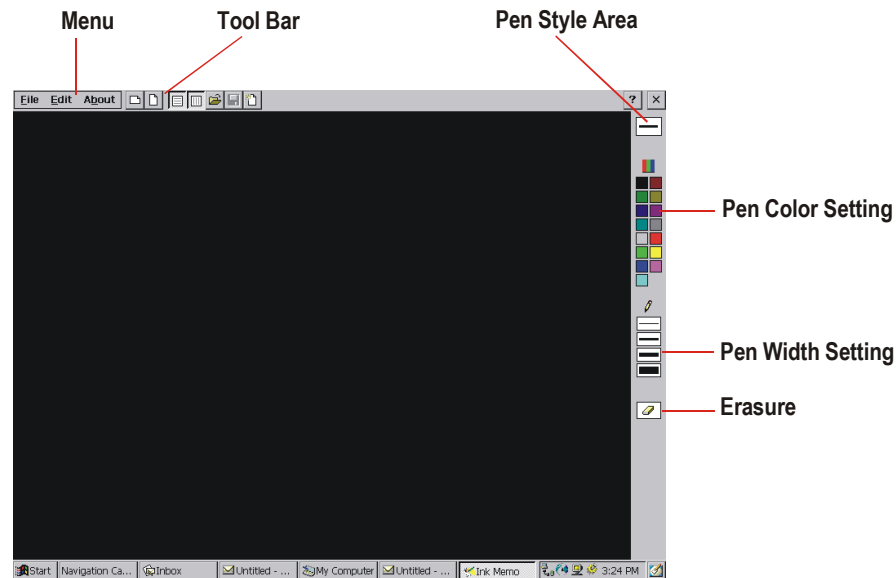
Using Slide Show you can select several images to view. To set the duration for each image, from View Frame, go to **Tools→Options**.



Currently, Picture Viewer does not support the 'Save As' functions.

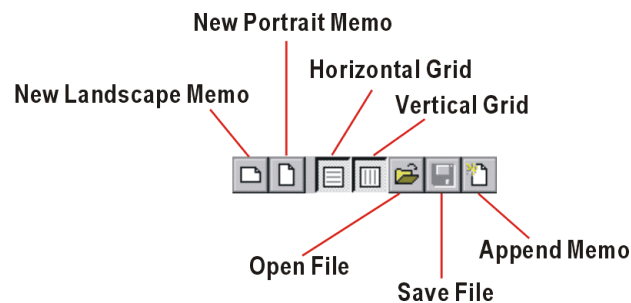
Ink Memo

User can create a new memo or load from image files before drawing. It can be done by selecting **New** or **Open** from **File** drop-down menu. User can also select the button from **Toolbar** to new or open a memo. When finished, select **Save** or **Save As** from **File** menu to save the memo.



Toolbar

Toolbar has 6 shortcuts including New Landscape Memo, New Portrait Memo, Horizontal Grid, Vertical Grid, Open File, Save File and Append Memo.



New

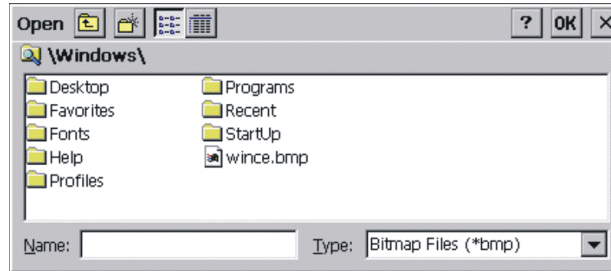
This tool allows user to select landscape memo or portrait memo. The default resolution for landscape memo is 736*530 pixels, for portrait memo is 544*725 pixels.

Grid

This tool allows user to select the horizontal grid or vertical grid. It also can be found in **Edit** menu.

Open File

This tool allows user to open a memo that was previous saved or a standard 16 color bitmap file by clicking the **Open** button on **Toolbar** or from **File** menu. When clicking **Open**, a dialog box appears to allow user to open a selected file.



Note: Ink Memo only supports 16 colors bitmap file. If user attempts to open a bitmap that is not 16 colors, error messages will pop-up.

Save File

This tool allows user to save the file as the existing file name by clicking **Save**. Or you can save the file as the other file names depending on what you need by clicking **Save As**.

Append Memo

This tool allows user to enlarge the memo size, like the function that inserting the new memo to the original one. This also can be found in **Edit** menu.

Pen Style

This tool allows user to select different types of pen color and pen width while drawing. Once you touch the pen color or pen width, the **Pen Style** area will display the tool you selected. Ink Memo supports 16 colors and 4 kinds of pen width. The default color setting is black.

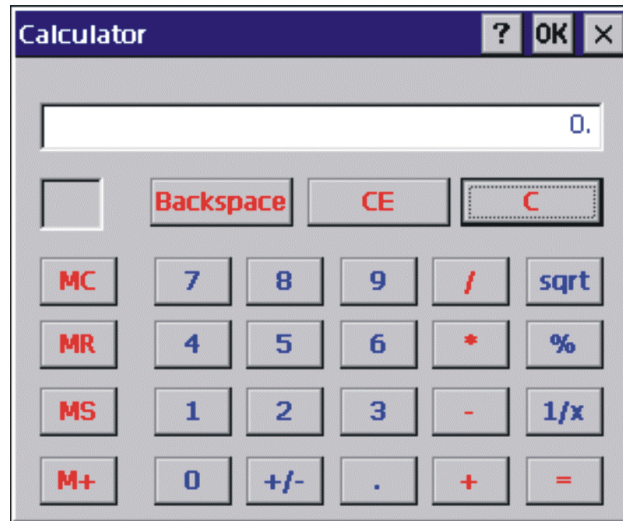
You can use **Calculator** in standard view to perform simple calculations.

To perform a simple calculation

1. Enter the first number in the calculation.
2. Click + to add, - to subtract, * to multiply, or / to divide.
3. Enter the next number in the calculation.
4. Enter any remaining operators and numbers.
5. Click =.

Other topics

- To work with numbers stored in memory
- Other operators



Other operators

1. **C** clears the current calculation
2. **CE** clears the displayed number
3. **Backspace** deletes the last digit of the displayed number
4. **0-9** puts the number in the calculator display
5. **+/-** changes the sign of the displayed number
6. **.** inserts a decimal point
7. **Sqrt** calculates the square root of the displayed number
8. **1/x** calculates the reciprocal of the displayed number
9. **%** displays the result of multiplication as a percentage
10. **MS** stores the displayed number
11. **MR** recalls a stored number
12. **MC** clears the memory
13. **M+** adds the displayed number to the number already in memory
14. **=** performs any operation on the previous two numbers. To repeat the last operation, click again.
15. **/** Divide
16. ***** Multiply
17. **-** Subtract
18. **+** Add

% Example

1. Enter one number, click *****, enter the second number, and then click **%**. For example, $50 * 25\%$ will display 12.5.
2. You can also perform operations with percentages. Enter one number, click the operator (**+**, **-**, ***** or **/**), enter the second number, click **%**, and then click **=**. For example, $50 + 25\%(\text{of } 50) = 62.5$.

To work with numbers stored in memory

- **MS** stores the displayed number
- **MR** recalls a stored number

- **MC** clears the memory
- **M+** adds the displayed number to the number already stored in memory

Note: When you store a number, an *M* appears in the box above the memory options. If you store another number, it replaces the one currently stored in the memory.

Operators

An operator is a symbol that represents an operation. You can use the following four operations in standard calculations

/ Divide
 * Multiply
 - Subtract
 + Add

Applications in Brief

Primer is a PDF (portable document format) reader, which means you can read documents with their original formatting in place. Any .pdf file you receive as attachments or download from the Internet can be read with this application. For more information, see <http://www.ansyr.com/products/primerppc.asp>

PTab is a fully functional spreadsheet designed for use with Windows CE. You can use it to create spreadsheets and share the information with Excel files on your PC. For more information, visit <http://www.z4soft.com/>

Pocket On-Schedule lets you manage your contacts, appointments and tasks. It works as a journal, phonebook, and calendar. For more information, visit <http://www.odysseyinc.com/products/pocketos/default.htm>

Notepad lets you create, open and update notepad files.

Pocket Word works much like Word 97 or Word 2000. It supports TrueType fonts, simple formatting, and can display embedded image files. It can't display other types of embedded files, and doesn't support headers, footers, footnotes, captions, indexes or comments.

Windows Media Player lets you explore the full potential of the World Wide Web, playing streaming media, including video and audio.

Internet Explorer is designed to give the full experience of the World Wide Web, but using less system resources than the full version of Internet Explorer.

PowerPoint is not supported with Windows CE 3.0, although you can publish your .ppt files to HTML pages on your PC and use these files in the Pocket IE provided on the Web Tablet.

3.Connecting Other Devices

Your Web Tablet is designed to support a number of external devices. As stated earlier, the devices need to be compatible with the Windows CE 3.0 operating system. A list of drivers included within Windows CE 3.0 can be viewed on the Windows CE web site:

<http://www.microsoft.com/windows/embedded/ce/tools/hardware/drivers.asp>

If drivers are not included for the device being connected, the device manufacturer needs to provide their own Windows CE 3.0 driver.

3.1USB Keyboard and Mouse

Your Web Tablet can support a USB keyboard and mouse. Below is a list of some keyboards and Mice that work with the Web Tablet:

Keyboard			
Manufacturer	Part Number	Interface	Name
Acer	6511-HA	USB	Aspire Keyboard
BTC	BTC-5122U	USB	BTC Keyboard
Chicony	KU-9985	USB	Chicony Keyboard
Chicony	ACK-600HM	USB	Chicony Keyboard
Microsoft		USB	Microsoft Natural Keyboard
Mouse			
Genius	Niche	USB	Genius Mouse
Logitech	M-CA848A	USB	Logitech Wheel Mouse
Logitech		USB	Logitech Wheel Mouse, Optical
Logitech	M-UB48	USB	Logitech Mouse
Microsoft		USB	Wheel Mouse, Optical
Microsoft		USB	Microsoft IntelliMouse

For information on using other USB devices, contact peripheral vendor.



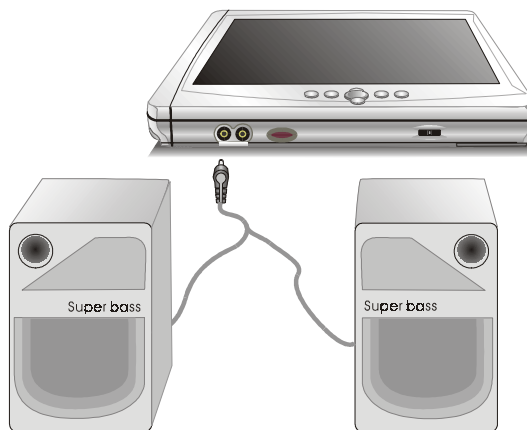
3.2 External Microphone



You can use an external microphone to improve the quality of your voice recording or transmissions.

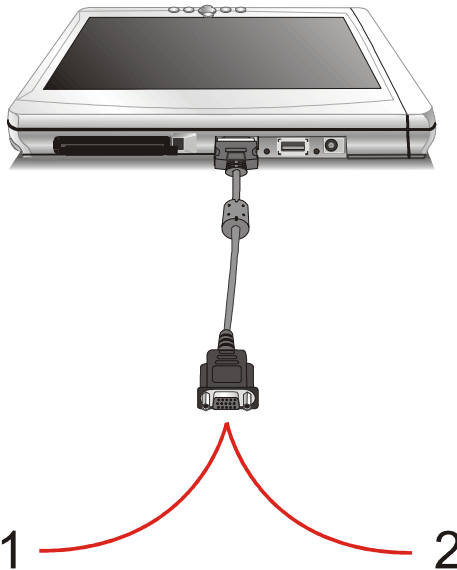
3.3 External Speakers

The experience of visiting websites, playing games or MP3 can be enriched through using external speakers.



3.4 External Display

For presentations or lectures, you can connect a CRT (Cathode Ray Tube Monitor) or projector via the supplied Mini-VGA cable and Port.



4. Getting Online

4.1 Establishing a Dial-up Connection

You may already have an ISP (Internet Service Provider), or you may need to ask a friend or colleague's recommendation. Once you have joined an ISP, they will provide you with information you need to quickly connect to the Internet.

Place either a Fax/Modem PCMCIA or CompactFlash card in the appropriate slot and connect the cable to the phone connection. Go to

Start→Programs→Communication→Remote Networking→Make a New Connection, and fill in the information as supplied by your ISP.

4.2 Connecting to Your Network

In the office, you can connect to your network to go online. When you place your LAN card in the appropriate slot, a dialogue box appears, asking for IP information. Your network system administrator will need to supply this information and you will need to carefully follow their directions.

To check what network drivers are installed on your Web Tablet, go to **Start→Settings→Control Panel→Network**. From this point, you can also edit IP information if necessary, by highlighting the relevant network driver and then clicking on the properties.

4.3 Ending a Connection

To end a connection, go to the icon in the lower left of your taskbar, double click and choose '**Disconnect**'.

4.4 Setting up Your Email

Your Web Tablet comes with a function-rich email application, designed specifically for use with Windows CE. To set up your email account, you will need setting information from your ISP and/or your network system administrator. Go to your **Start→Programs→Applications→Pocket On-Schedule→Inbox**. Once inside your inbox, go to **Services→Options**. Fill in the appropriate information per your network system administrator.

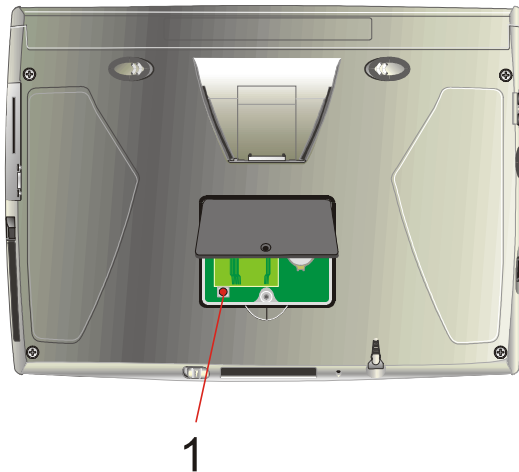
5. Troubleshooting

For problems with your Web Tablet, go to **Start→Help**. This brings up a general user guide to reference. Most questions will be able to be answered from this resource.

5.1 Common Problems / Frequently Asked Questions

The Web Tablet will not turn on!

- Make sure the Lock/Unlock switch is set to 'Unlock'
- Press one of the buttons on the front (either button B, C, D, E, or F denoted in [Section 1.7](#))
- If device does not power on, use the AC Adapter to plug the Tablet into the wall.
- If this does not turn the Tablet on, push the software reset button located next to the CompactFlash Slot
- A last resort will be, you will need to use the hardware reset button, marked on the diagram below. Use a small Philips head screw driver and remove the screws. Lift the cover and press the reset button. This will wipe all memory from your Web Tablet.



I touch the screen with my stylus, and the mouse arrow is in an entirely different place!

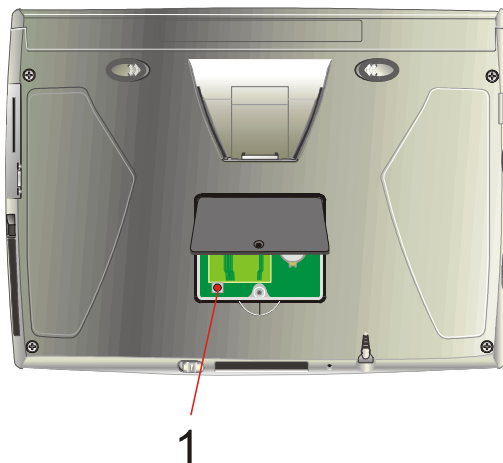
- This is a sure sign that you need to re-calibrate your touchscreen.
- Use the arrow keys and navigate the mouse arrow. If you press the arrow buttons and the mouse does not move, press button G. This will activate the arrow keys for mouse use.
- Go to **Start→Settings→Control Panel→Stylus**
- Click the calibration tab.
- Click recalibrate and follow the instructions.

How do I turn off my Web Tablet?

- You can turn off your Web Tablet by simply going to the Start Menu and choosing '**Suspend**'. This will put the device in standby mode. While the battery is still charged, no data will be lost.

How do I restart my Web Tablet? (If it freezes / hangs up, or I just loaded new software)

- If you need to restart your Web Tablet unscrew your stylus, and hit the software-reset button on the side of the Tablet. If your Web Tablet is not responding to any commands (that is, it freezes or hangs) you can use this same reset button. The software-reset button will not affect data on your Web Tablet system.
- If your system freezes or hangs, and does not respond, even after you hit the software reset button, first remove the battery to restart the system. If this does not remedy the situation, you will need to use the hardware reset button, marked on the diagram below. Use a small Philips head screw driver and remove the screws. Lift the cover and press the reset button. This will wipe all memory from your Web Tablet.



My screen is dirty, how can I clean it without harm to the screen?

- Clean the screen with a soft, clean cloth and commercial window cleaner that does not contain wax or abrasives. Always apply the cleaner to the cloth, not the screen. If the display contains grease or some other contaminant, use isopropyl alcohol instead of commercial cleaner. Note: paper toweling and other paper products are abrasive. Be sure to use a clean cloth when wiping the screen.

Can I protect my Web Tablet with password access?

- Yes, to protect your valuable information, you may want to set up a password for your Web Tablet. Go to **Start→Control Panel→Password**.

5.2 Handwriting Recognition

Lower Case Upper Case

a	ā	k	ķ	u	1
b	ḃ	l	ḷ	v	2
c	ċ	m	ṃ	w	3
d	ḏ	n	ṇ	x	4
e	ē	o	ō	y	5
f	ḟ	p	ṕ	z	6
g	ḡ	q	ḡ		7
h	ḥ	r	ṙ		8
i	ī	s	ṡ		9
j	ĵ	t	ṭ		0

A	Ā	K	Ķ	U
B	Ḃ	L	Ḷ	V
C	Ċ	M	Ṁ	W
D	Ḑ	N	Ṇ	X
E	Ē	O	Ō	Y
F	Ḟ	P	Ṗ	Z
G	Ḣ	Q	Ḣ	
H	Ḥ	R	Ṛ	
I	Ī	S	Ṣ	
J	Ĵ	T	Ṭ	

Symbols

!	+	?	}
“	,	@	~
#	-	[
\$.	\	
%	/]	
&	:	^	
‘	;	_	
(<	`	
)	=	{	
*	>		

Appendix A: Specifications

Processor	Intel Strong ARM 1110 206 MHz and companion chip SA1111
Operating System	Win CE 3.0
Major Application	Browser (support plug-in), E-mail, MP3 player, Pocket Office equivalent
Memory	64 or 128 MB SDRAM on board 32MB Flash ROM on board
Optional Storage	IBM Micro Drive
Display	10.4" TFT Panel with SVGA resolution support portrait function
Audio System	AC-Link Audio Internal microphone and one speaker
PCMCIA	One PCMCIA Type II slot
Compact Flash	One compact flash Type II slot
External Keyboard	USB or PS/2 Keyboard (Optional)
Application Button	One application launch dial One navigations button support mouse-mode & key -mode, "ENTER" key can launch application One toggle button to switch navigations button between mouse-mode & key-mode One Page Up/Down dial (lateral) One power lock switch One reset switch
Pointing Device	Built-in Touch Panel Navigations button
Battery	Primary battery pack (4-cell) with smart Li-ion battery, 5 hours battery life Premium battery pack (8-cell) with smart Li-ion battery, 10 hours battery life
Power Adapter	Universal AC 90V ~ 265V, 47~63Hz input, 19V DC, 3.16A output, 60W
LED Status Indicator	Green: Power On Orange: Charging, blinking when battery low
I/O Port	One PCMCIA Type II slot One compact flash Type II card socket support One USB Type B connector One mini-VGA connector One DC-in jack One audio jack for external headphone One audio jack for external Microphone One cradle connector
Physical	290(W)*213(D)*23.5(H) mm (Min-height) 1150g (with primary battery pack & 10.4" Panel)
Environment	Operating Temperature : 5°C~40°C Storage Temperature : -20°C~ 60°C Operating Humidity : 20% ~ 80%