



212 North Evans Road Evansdale, Iowa 50707 Phone (319) 236-7977 Fax (319) 236-7980

Owners Manual

DOUBLE FUNCTION PATROL WING
METRO 125 FRONT LIFT
S7710

Unit Serial Number: _____



212 North Evans Road Evansdale, Iowa 50707 Phone (319) 236-7977 Fax (319) 236-7980

WARRANTY POLICY

Viking Cives, USA warrants products of its manufacture against defects in workmanship and material for a period of one year, from the date of shipment to the customer. In consequence of this warranty, any component part or parts of such products proving defective within the above specified time will be repaired or replaced F.O.B. Factory. Providing such parts are returned, transportation prepaid, to the factory and found defective by Viking Cives, USA.

This warranty will not apply to any product which has been repaired or altered outside of Viking Cives, USA factory in any way, so as in Viking Cives, USA's judgement, to affect its stability or reliability, nor which has been subject to misuse or accident.

The obligations of Viking Cives, USA under this warranty are limited to the replacement of defective parts. Such obligations are exclusive and in lieu of all other remedies, warranties, guarantees of liabilities, expressed or implied, with respect to each product delivered. Here under, arising by law or otherwise (including without limitation any obligation or liability by Viking Cives, USA arising from negligence or with respect to fitness, merchantability, loss of use, revenue, or profit, or consequential damages or injuries).

This limited warranty shall not be extended, altered, or varied except by a written instrument signed by Viking Cives, USA.

Viking Cives, USA assumes no responsibility for engines, electrical equipment or any other equipment and accessories not manufactured by Viking Cives, USA beyond the warranty of the manufacturer of such equipment of accessories.

All warranty work done on Viking Cives, USA equipment must have prior authorization from Viking Cives, USA along with a "Return Goods Authorization" number. All labor and parts issued by user for Viking Cives, USA warranty without an authorization number and a signed authorization warranty form will be at the users own cost.

ORDERING PARTS

Delays and errors can be eliminated when ordering instructions are followed correctly.

1. Place orders direct with Viking-Cives/nearest dealer.
2. State Company name, address, and postal/zip code.
3. Give the exact model and serial number of the equipment/unit (stamped on the unit identification plate.)
4. Furnish part number, description and quantities required.
5. Print or type order clearly.
6. Give specific shipping instructions.



VIKING-CIVES (USA) – RR2, Box 36-1/2; Harrisville, New York 13648; (315) 543-2321, (315) 543-2366 Fax
VIKING-CIVES (USA) Midwest Division – 212 North Evans Road; Evansdale, Iowa 50707; (319) 236-7977, (319) 236-7980 Fax
VIKING-CIVES LTD. – RR4, Box 1120; Mount Forest, Ontario, Canada N0G 2L0; (519) 323-4433, (519) 323-4608 Fax



212 North Evans Road Evansdale, Iowa 50707 Phone (319) 236-7977 Fax (319) 236-7980

TABLE OF CONTENTS

<u>DESCRIPTION</u>	<u>PAGE No.</u>
Introduction	4
Periodic Maintenance Inspection	4
Daily Inspection and Lubrication	4
Operating Instructions	5
Drawing of Wing Installation on Truck Body	6
Wing Installation on Truck Body	7
Drawing of Single Arm MTG Kit	8
Single Arm MTG Kit	9
Drawing of Moldboard Assembly	10
Moldboard Assembly	11
Drawing of 125 Mast Assembly – Front Lift Patrol Wing	12
125 Mast Assembly – Front Lift Patrol Wing	13
Drawing of Float Housing Assembly – Front Lift Wing	14
Float Housing Assembly – Front Lift Wing	15
Drawing of a Non – Trip Hinge	16
Non – Trip Hinge	17
Drawing of Full Trip Hinge	18
Full Trip Hinge	19
Drawing of Push Beam Assembly	20
Push Beam Assembly	21



212 North Evans Road Evansdale, Iowa 50707 Phone (319) 236-7977 Fax (319) 236-7980

INTRODUCTION

This instruction/parts manual has operation and maintenance information for the Viking-Cives (**insert equipment Type**). It has been prepared to familiarize you with the design features of the unit, and to instruct you in its proper operation and maintenance.

Read this manual carefully before you operate or service your (**insert equipment Type**). Remember that you're working with heavy equipment that can injure you or someone else. You can help lessen the chance of injury by following the procedures in this manual, carefully.

DANGER: If incorrectly used, this equipment can cause severe injury. Your chance of injury can be greatly reduced by following all caution/warning decal notifications. All decals must be kept clean and complete. Replace any decals that are unreadable. Decals may be purchased directly from Viking-Cives or you're nearest authorized dealer. All Operator/Service people should review this manual carefully and become familiar with its contents. **If anyone else beside you operates or services this equipment, make sure they read this manual and are instructed with to follow the safety procedures related to this equipment.**

PERIODIC MAINTENANCE INSPECTION DAILY INSPECTION AND LUBRICATION

Daily inspection along with periodic preventive maintenance will reduce the chance of any major repairs and down time during equipment use.

1. Check the fluid level in the hydraulic oil reservoir. If the sight indicates low oil level, add the appropriate amount of the specified hydraulic fluid.
2. Grease all required components:
 - All plow harness sheave nipples.
 - All pump drive shaft nipples.
 - Front and Rear tower sheave swivel blocks.
 - Wing extension arm nipples.
 - Front and Rear tower guide tracks.
 - All front harness pivot points.
3. Check all components for loose and/or missing fasteners, if required tighten and/or replace.
4. Visually inspect all hydraulic connections and hoses for cracks and/or leaks.
5. Check all cables, chains and sheaves for excessive wear or damage.
6. Visually inspect plow and wing units. Check cutting edges and wear shoes. If cutting edge has excessive wear remove and rotate or if required replace. **CAUTION:** Do not allow cutting edge to wear down to mounting angle. Any wear to the mounting angle may affect the operation and safety of the equipment. Replacement is costly.
7. At the beginning of each shift visually inspect all caution and warning decals. All decals should be complete and legible. If decals are not legible, clean them. If cleaning the decals does not make them legible, install new decals.

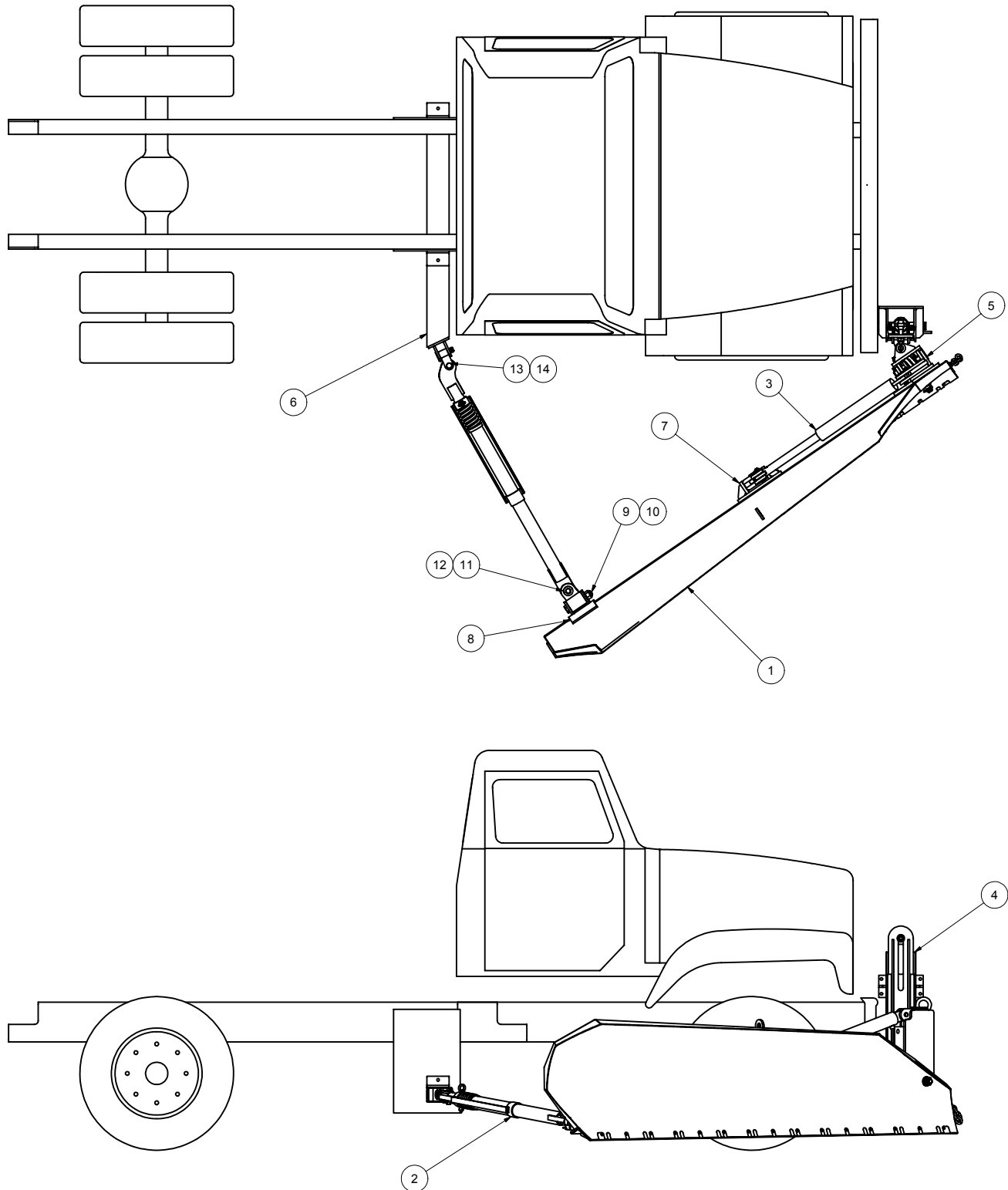


212 North Evans Road Evansdale, Iowa 50707 Phone (319) 236-7977 Fax (319) 236-7980

OPERATING INSTRUCTIONS

1. The operator should familiarize himself with all equipment prior to operation. The cab controls are placed at a comfortable reach of the operator, with an allowable amount of adjustment. If necessary, the controls can be adjusted for either driver or passenger use.
2. The in cab control levers are arranged from left to right as the operator sees the plows.
 - First lever: Front Plow (One-way, Reversible, etc.)
 - Second lever: Front of Wing
 - Third lever: Rear of Wing
 - Fourth lever: Wing Brace (Slider)All levers are clearly marked as to the equipment/function they control.
3. To raise the plow or wing, pull back on the appropriate control level, to lower the plow or wing, push the control level forward. **NOTE:** The in cab controls are proportional to the hydraulic valve, therefore the further the control lever is moved the faster the plow or wing will raise or lower.
4. Before putting any equipment into use, check for any worn, damaged or loose components, if necessary repair or replace. Listen for any unusual sounds, if necessary repair and/or replace worn or damaged parts.
5. Before operating any equipment make sure to read and fully understand all caution and safety warnings. Familiarize yourself and others with all caution/warning labels and their locations. Make sure all labels are complete and legible. Replace any labels that have become unreadable and/or missing. Replacement labels can be purchased directly from Viking-Cives or you're nearest authorized dealer.

DOUBLE FUNCTION 125 WING INSTALLATION ON TUCK BODY



EQUIPMENT MAY NOT BE EXACTLY AS SHOWN. SOME COMPONENTS MAY BE OPTIONAL
TO MAINTAIN OUR ON-GOING PRODUCT AND DEVELOPMENT IMPROVEMENT PROGRAM, VIKING-CIVES RESERVES THE RIGHT TO CHANGE EQUIPMENT & SPECIFICATION WITHOUT NOTICE.



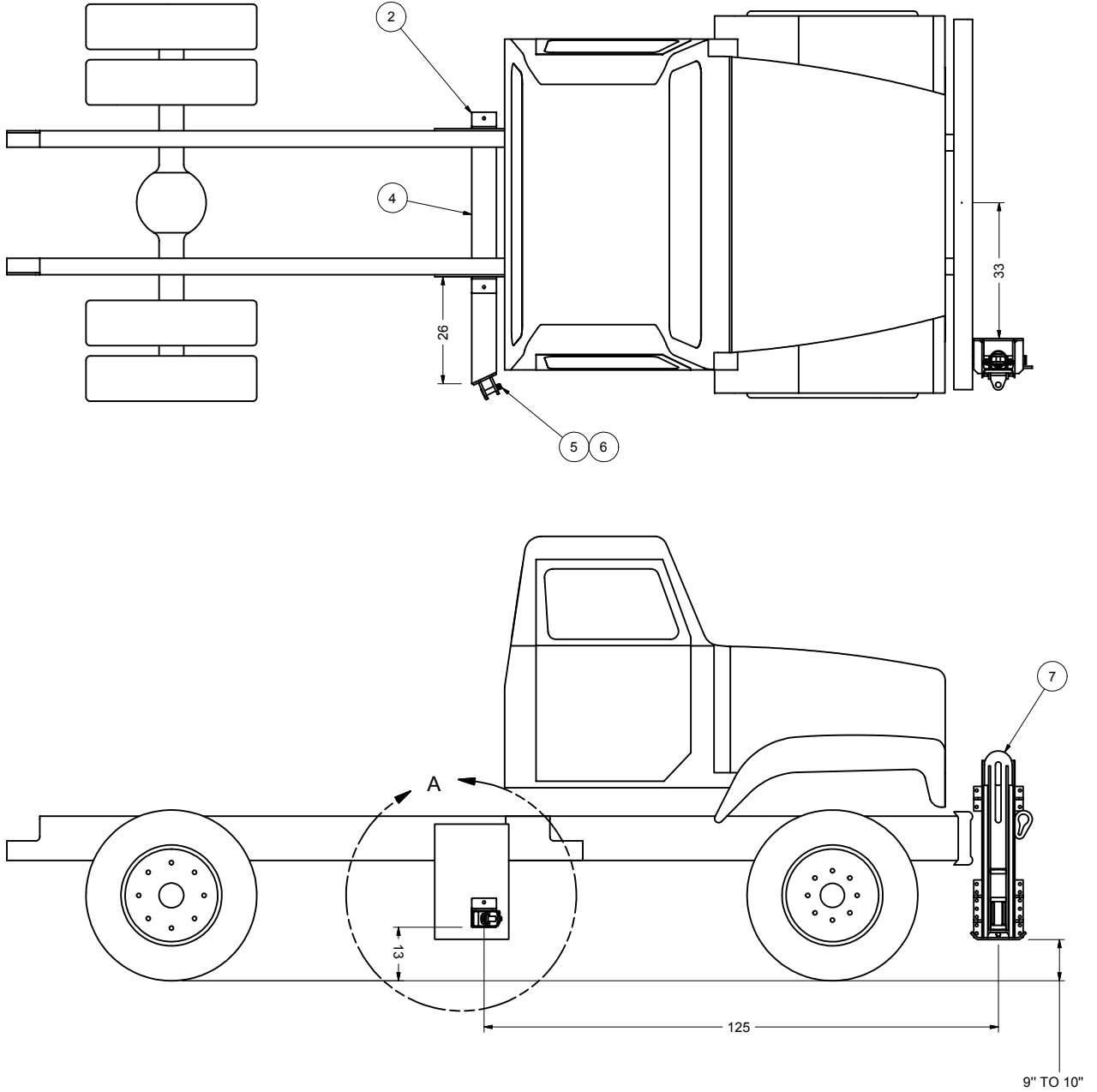
212 North Evans Road Evansdale, Iowa 50707 Phone (319) 236-7977 Fax (319) 236-7980

WING INSTALLATION ON TRUCK BODY

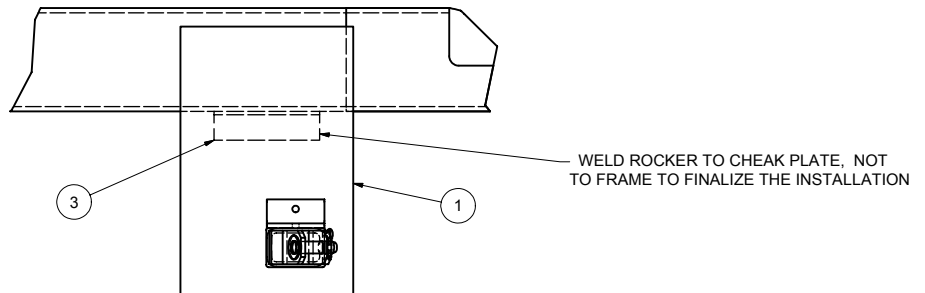
Item Id #	Item #	Description	Qty	Optional
1	201412008	Wing moldboard weldment – 8' edge	1	*
1	201412007	Wing moldboard weldment – 9' edge	1	*
1	201401095	Wing moldboard weldment – 10' edge	1	*
2	AHW053	Push beam assembly	1	
3	280158B	3" x 20" DA cylinder	1	
4	200701908	Front post 20 – front lift assembly – mast assembly	1	
5	201401067	Hinge Assembly front lift	1	
5	201401050	Hinge assembly front post lift	1	*
6	201001178	Cross tube weldment rear	1	
7	201401066	Float housing assembly – front lift AHW	1	
8	201404334	Bracket MTG 1 arm	1	
9	200900067	Bolt hex 1 ¼" x 7 ½" unc zinc	1	
10	280999D	Nut hex elastic 1 ¼" unc zinc	1	
11	2AHW035	Pin connecting link	1	
12	265169	Pin Cotter 5/16" x 2 ½"	1	
13	3SK3400A	Pin	1	
14	265169	Cotter pin 5/16" x 2 ½"	1	

Item Id number 1 will depend on what size wing moldboard weldment you have.

**125 DOUBLE FUNCTION PATROL WING
SINGLE ARM MTG KIT**



**DETAIL A
SCALE 1 / 10**





212 North Evans Road Evansdale, Iowa 50707 Phone (319) 236-7977 Fax (319) 236-7980

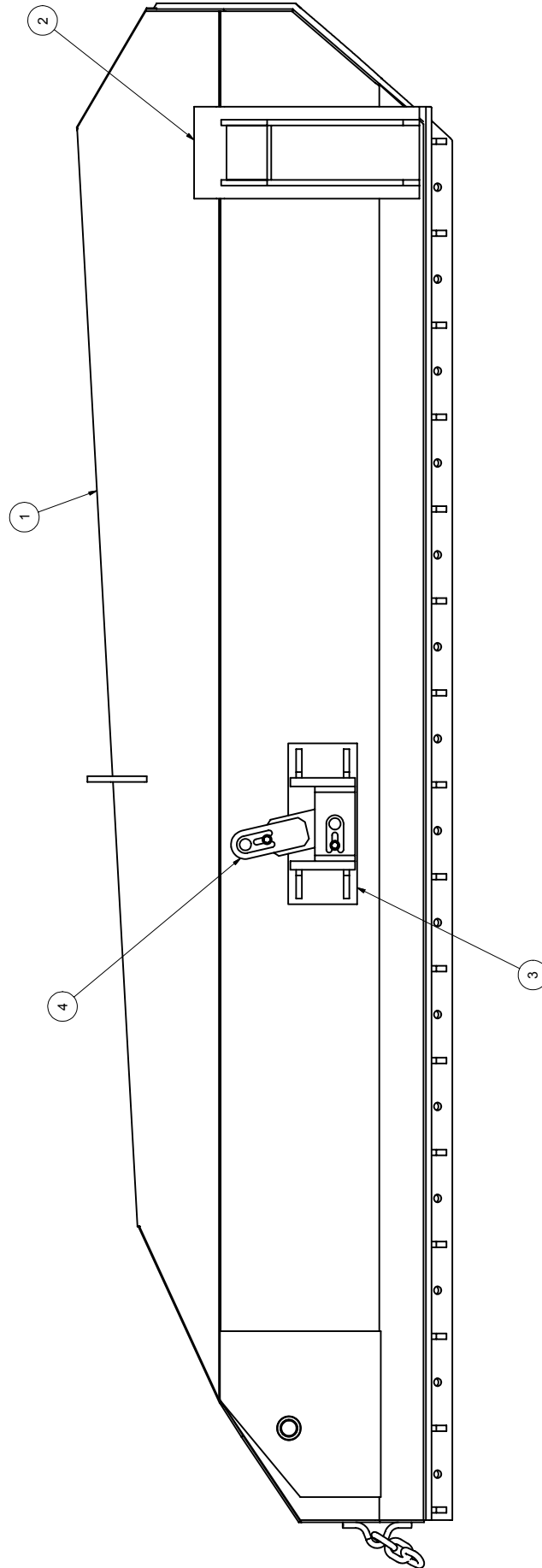
SINGLE ARM MTG KIT

Item Id #	Item #	Description	Qty	Optional
1	201001177	Cheek plate 18" x 28"	2	
2	200401495	3" x 4" x 6" mounting angles	2	
3	200401494	3" x 3" x 11" rocker angles	2	
4	201001178	Cross tube weldment rear	1	
5	281023	1 1/4" x 5" Bolt	1	
6	281007B	1 1/4" Top lock	1	
7	200701908	Front post 20 – front lift assembly – mast assembly	1	



212 NORTH EVANS ROAD, EVANSDALE, IOWA 50707 (319)236-7977 PH (319)236-7980 FX

125 DOUBLE FUNCTION MOLDBOARD ASSEMBLY



EQUIPMENT MAY NOT BE EXACTLY AS SHOWN. SOME COMPONENTS MAY BE OPTIONAL.
TO MAINTAIN OUR ON-GOING PRODUCT AND DEVELOPMENT IMPROVEMENT PROGRAM, VIKING-CIVES RESERVES THE RIGHT TO CHANGE EQUIPMENT & SPECIFICATION WITHOUT NOTICE.



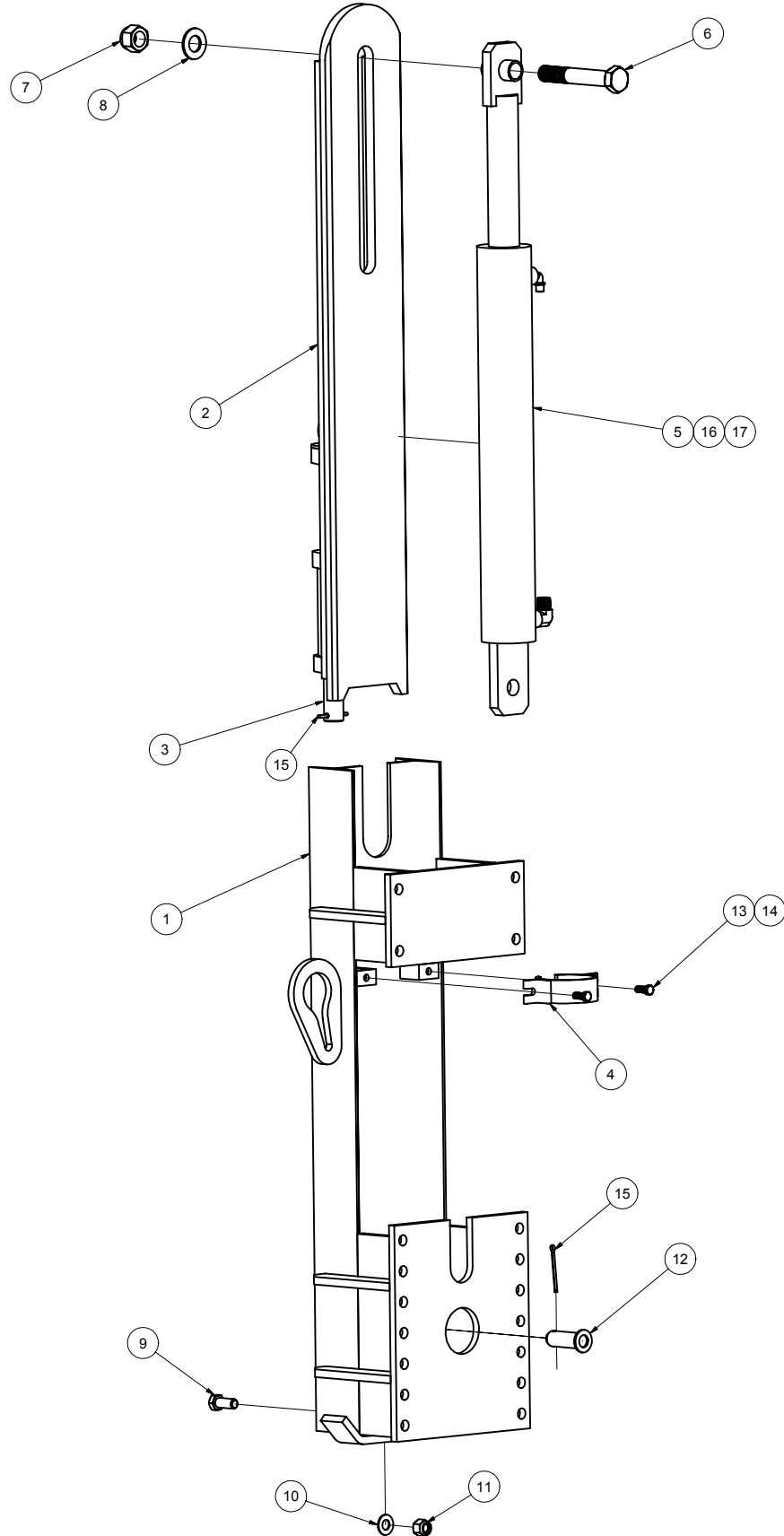
212 North Evans Road Evansdale, Iowa 50707 Phone (319) 236-7977 Fax (319) 236-7980

Wing Moldboard Assembly

Item Id #	Item #	Description	Qty	Optional
1	201412008	Wing moldboard weldment – 8' edge	1	*
1	201412007	Wing moldboard weldment – 9' edge	1	*
1	201401095	Wing moldboard weldment – 10' edge	1	*
2	201404334	Single arm bracket	1	
3	01401037	Float housing weld't – front lift AHW	1	
4	01401036	Float link weld't – front lift AHW	1	

The wing moldboard will depend on what size you choose.

125 MAST ASS'Y - FRONT LIFT PATROL WING



EQUIPMENT MAY NOT BE EXACTLY AS SHOWN. SOME COMPONENTS MAY BE OPTIONAL.
TO MAINTAIN OUR ON-GOING PRODUCT AND DEVELOPMENT IMPROVEMENT PROGRAM, VIKING-CIVES RESERVES THE RIGHT TO CHANGE EQUIPMENT & SPECIFICATION WITHOUT NOTICE.

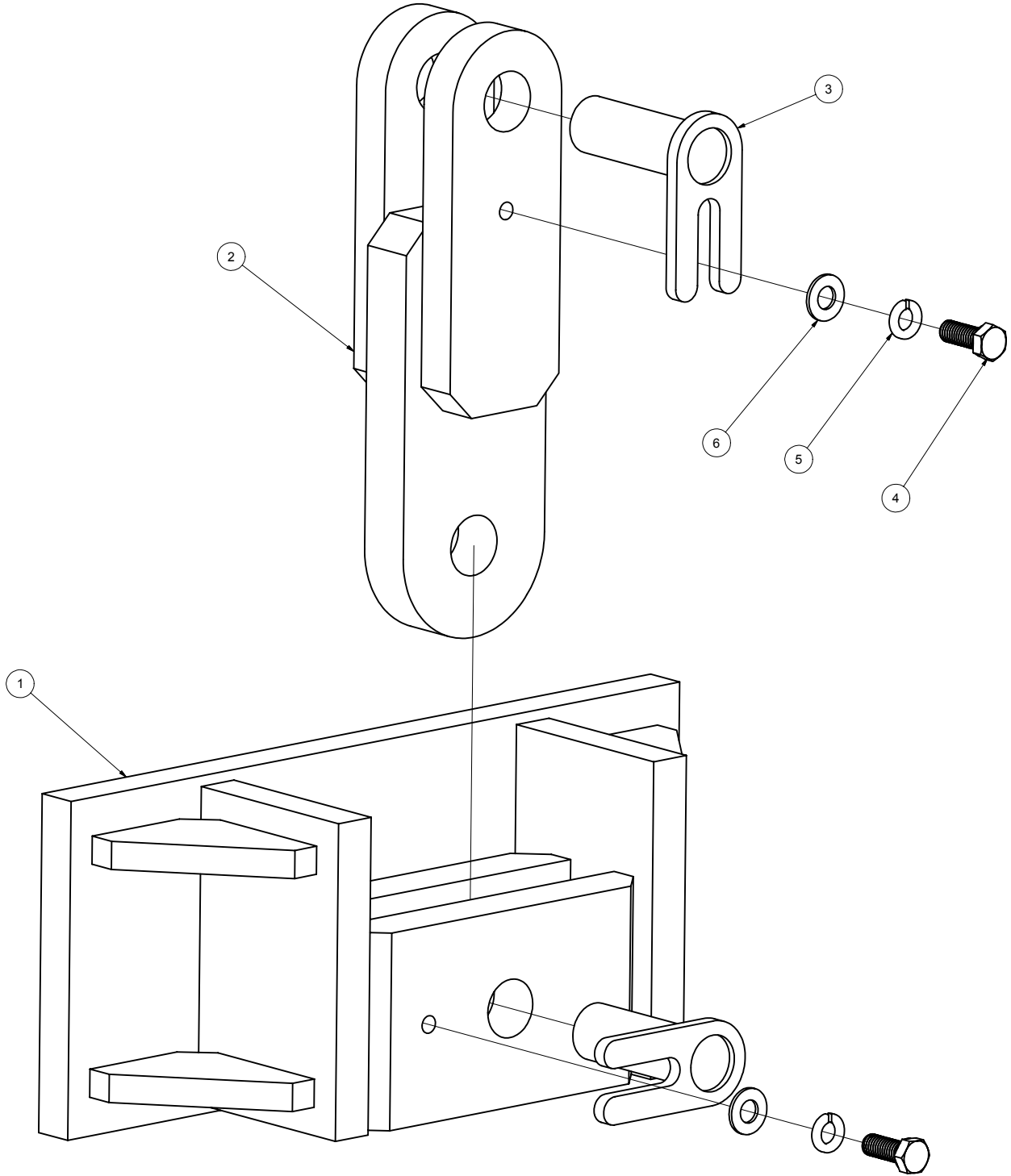


212 North Evans Road Evansdale, Iowa 50707 Phone (319) 236-7977 Fax (319) 236-7980

125 Mast Assembly – Front Lift Patrol Wing (200701908)

Item Id #	Item #	Description	Qty	Alternate #
1	200701919	Mast weldment	1	
2	00701918	Slide	1	
3	200900110	Wing attachment pin	1	
4	00401322	Bracket weldment 3 1/2" OD cylinder clamp	1	
5	280158B	3" x 20" DA cylinder	1	
6	281022E	1" x 6" NC hex hd grade 5 bolt	1	HW40A-1648
7	281001B	1" Nut hex elastic lock	1	HW36D-16
8	281020C	1" Flat washer heat treated	1	HW14D-16
9	3SK3700	5/8" x 2" Bolt	1	HW40A-1016
10	281070E	5/8" Flat washer	1	HW14B-10
11	81069J	5/8" Nut hex Stover	1	HW30D-10
12	20P148	1" DIA x 2 9/16" channel 3 OA pin	1	00900003
13	HW40A-0606	3/8" x 3/4" Bolt	1	
14	81086C	3/8" Nut elastic	1	HW36D-06
15	280507	1/4" x 3" Cotter pin	2	HW13-0848
16	80700B	Hyd. Adapter 3/8" SAE 90 3/8 JIC	1	0630016
17	80700A	Hyd. Adapter 1/2" SAE 90 3/8 JIC	1	0630015

FLOAT HOUSING ASS'Y - FRONT LIFT WING





212 North Evans Road Evansdale, Iowa 50707 Phone (319) 236-7977 Fax (319) 236-7980

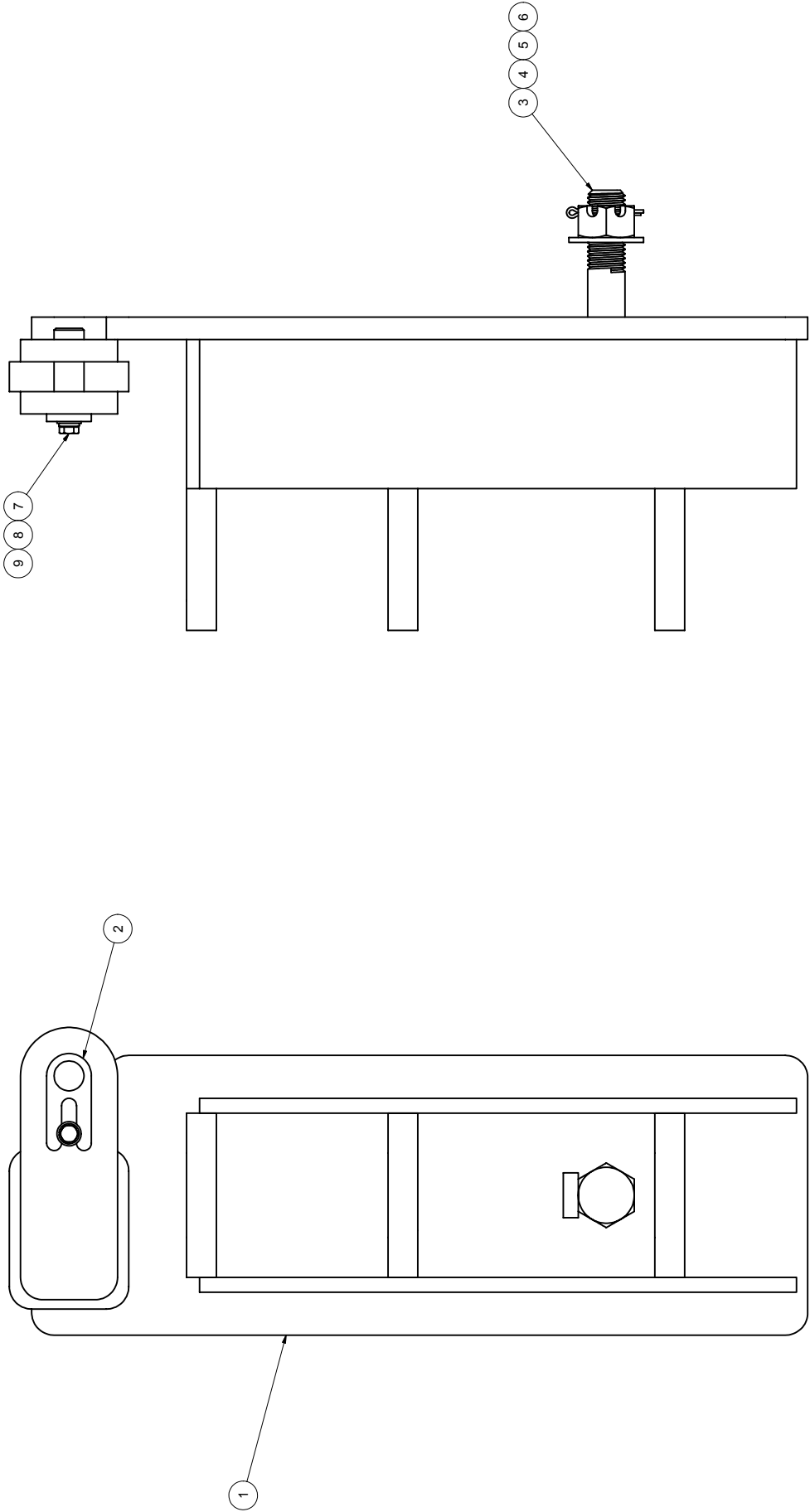
Float Housing Assembly – Front Lift Wing (201401066)

Item Id #	Item #	Description	Qty	Optional
1	01401037	Float housing weldment – front lift AHW	1	
2	01401036	Float link weldment – front lift AHW	1	
3	00900124	Pin 1 DIA x 2.875 locking	1	
4	215105	Bolt hex 3/8" x 1"	1	
5	233688	Lock washer 3/8"	1	
6	3SK3595	Flat washer 3/8"	1	



212 NORTH EVANS ROAD, EVANSDALE, IOWA 50707 (319)236-7977 PH (319)236-7980 FX

125 NON-TRIP HINGE



EQUIPMENT MAY NOT BE EXACTLY AS SHOWN. SOME COMPONENTS MAY BE OPTIONAL. TO MAINTAIN OUR ON-GOING PRODUCT AND DEVELOPMENT IMPROVEMENT PROGRAM, VIKING-CIVES RESERVES THE RIGHT TO CHANGE EQUIPMENT & SPECIFICATION WITHOUT NOTICE.



212 North Evans Road Evansdale, Iowa 50707 Phone (319) 236-7977 Fax (319) 236-7980

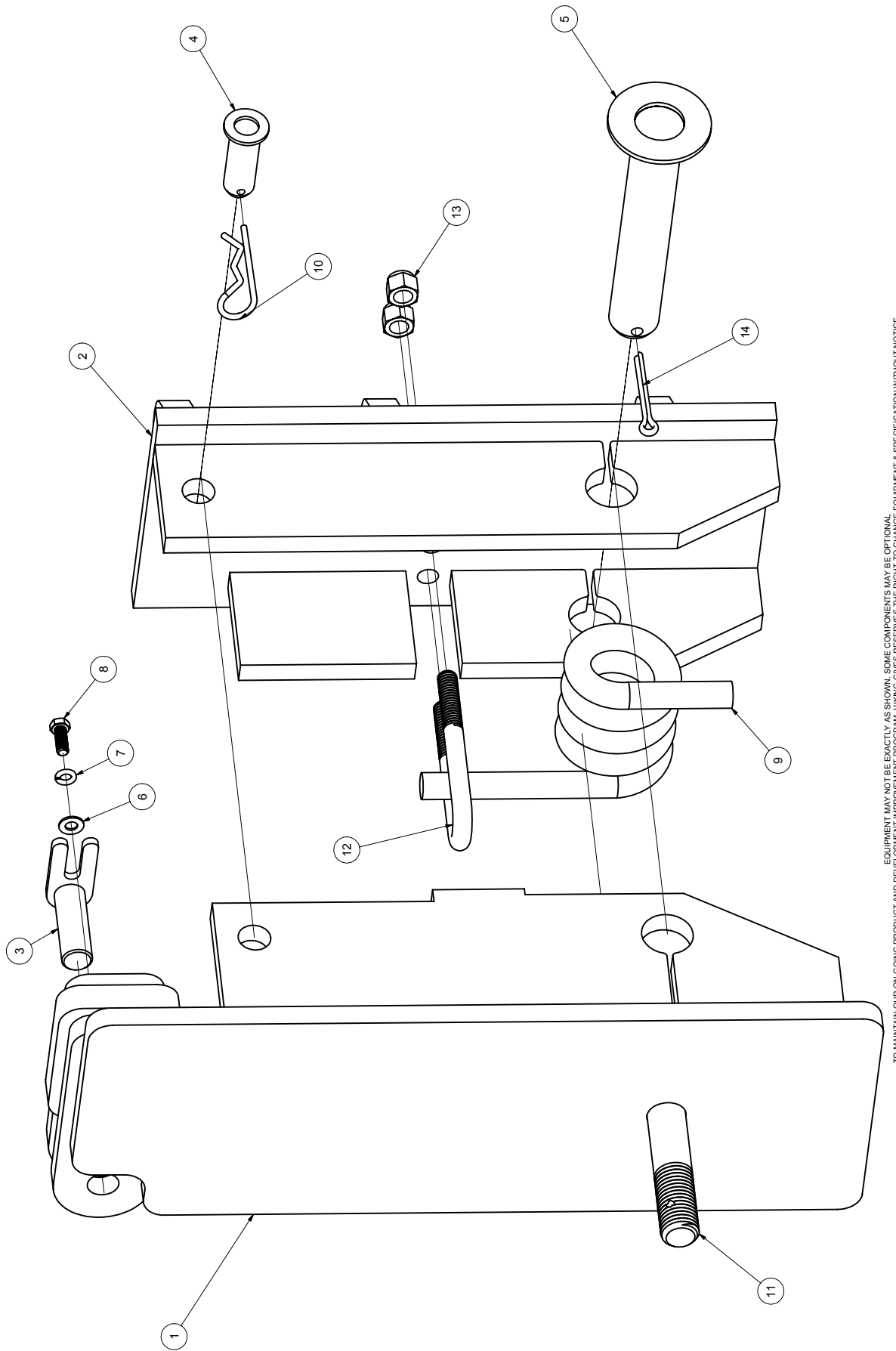
NON-TRIP HINGE (201401067)

Item Id #	Item #	Description	Qty	Optional
1	201401067	Hinge assembly front lift	1	
2	00900124	Pin 1 DIA x 2.875 locking	1	
3	200702037	Bolt drill 1.25 DIA x 5	1	
4	281015A	Flat washer 1 1/4" sae	1	
5	2HW30C-20	Nut 1 1/4" slotted hex	1	
6	280507	Pin cotter 1/4" x 3"	1	
7	3SK3595	Flat washer 3/8"	1	
8	233688	Lock washer 3/8"	1	
9	215105	Bolt hex 3/8" x 1"	1	



212 NORTH EVANS ROAD, EVANSDALE, IOWA 50707 (319)236-7977 PH (319)236-7980 FX

OPTIONAL 125 FULL TRIP HINGE



EQUIPMENT MAY NOT BE EXACTLY AS SHOWN. SOME COMPONENTS MAY BE OPTIONAL.
TO MAINTAIN OUR ON-GOING PRODUCT AND DEVELOPMENT IMPROVEMENT PROGRAM, VIKING-CIVES RESERVES THE RIGHT TO CHANGE EQUIPMENT & SPECIFICATION WITHOUT NOTICE.



212 North Evans Road Evansdale, Iowa 50707 Phone (319) 236-7977 Fax (319) 236-7980

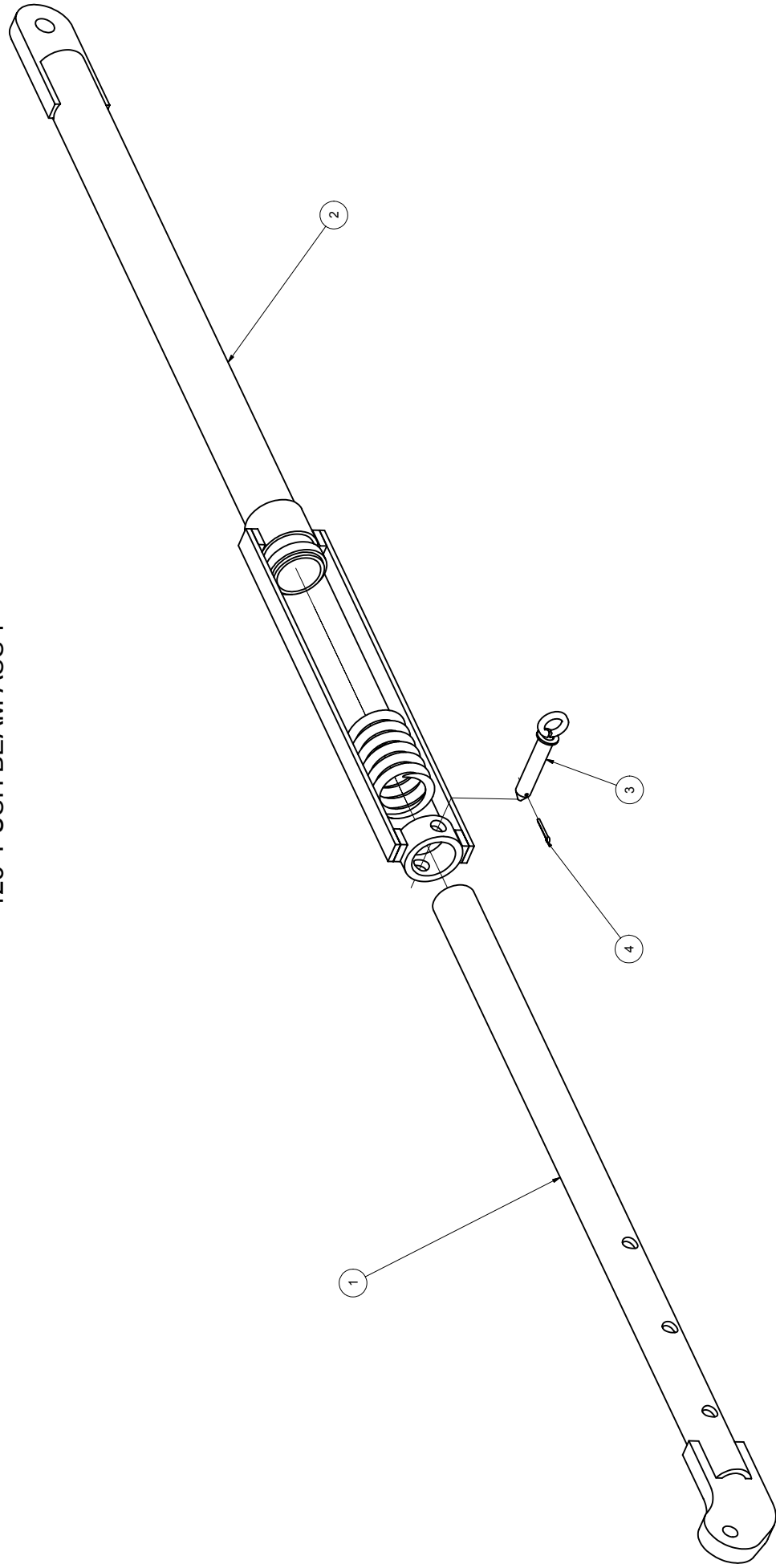
FULL TRIP HINGE (201401050)

Item Id #	Item #	Description	Qty	Optional
1	201401048	Hinge block weldment full trip FR lift		
2	201401049	Pivot block weldment full trip FR lift		
3	200900124	Pin 1.000 DIA x 2.875 locking		
4	200900003	Pin 1.00 DIA x 2.563		
5	210903004	Pin 1.625 x 9.125 UH to CH		
6	3SK3595	Flat washer SAE 3/8"		
7	233688	Lock washer Split 3/8"		
8	215105	Bolt hex 3/8" x 1" unc zinc		
9	20580013	Torsion Spring		
10	280536	Pin Hair 8		
11	200702037	Bolt Drilled 1.250 DIA x 5.000		
12	210715002	U-bolt 0.625 DIA x 5.50		
13	3SK3785	Nut hex elastic 5/8" unc zinc		
14	265169	Cotter hairpin 5/16" x 2 1/2"		



212 NORTH EVANS ROAD, EVANSDALE, IOWA 50707 (319)236-7977 PH (319)236-7980 FX

125 PUSH BEAM ASS'Y



EQUIPMENT MAY NOT BE EXACTLY AS SHOWN. SOME COMPONENTS MAY BE OPTIONAL.
TO MAINTAIN OUR ON-GOING PRODUCT AND DEVELOPMENT IMPROVEMENT PROGRAM, VIKING-CIVES RESERVES THE RIGHT TO CHANGE EQUIPMENT & SPECIFICATION WITHOUT NOTICE.



212 North Evans Road Evansdale, Iowa 50707 Phone (319) 236-7977 Fax (319) 236-7980

PUSH BEAM ASSEMBLY

Item Id #	Item #	Description	Qty	Optional
1	01407333	Inner push arm weld't 10' AHW	1	
2	01407332	Outer push arm with cage assembly	1	
3	2AHW027	Pin push beam	1	
4	280536	Pin hair 8	1	