

DeskJet 61xx Disassembly Procedures

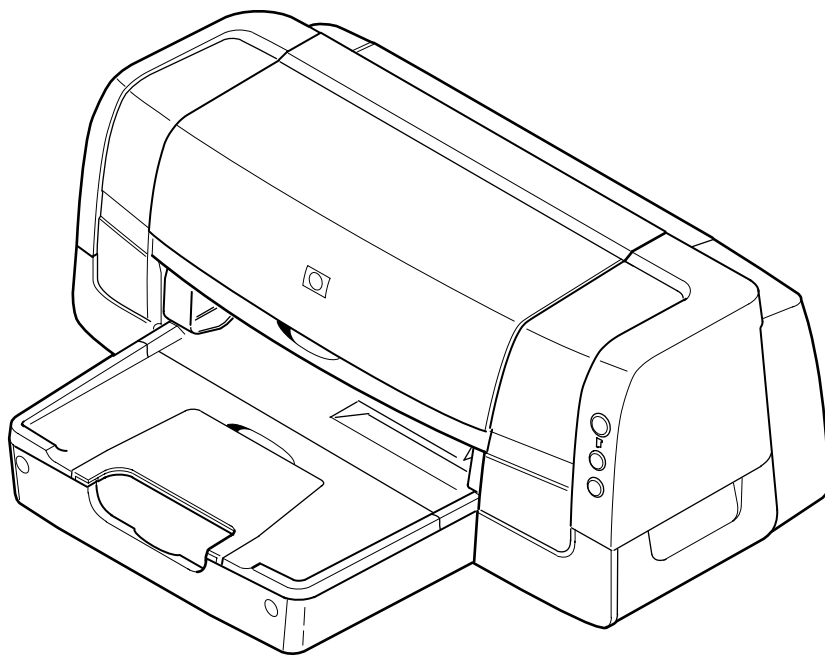
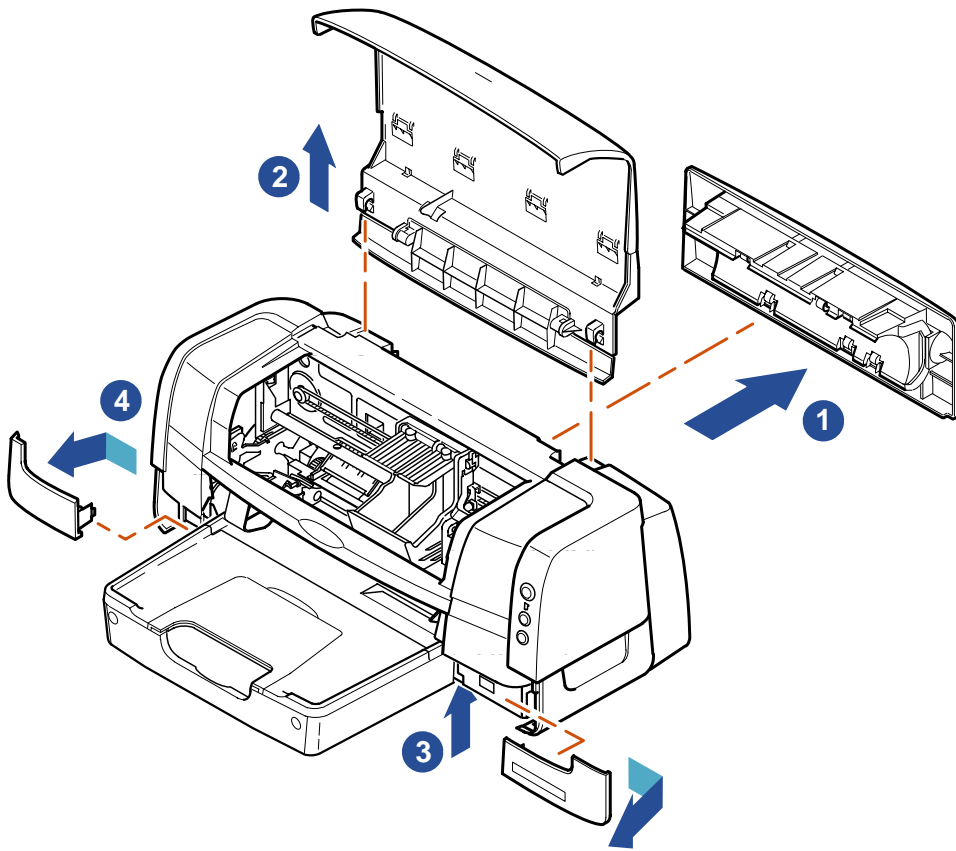


TABLE OF CONTENTS

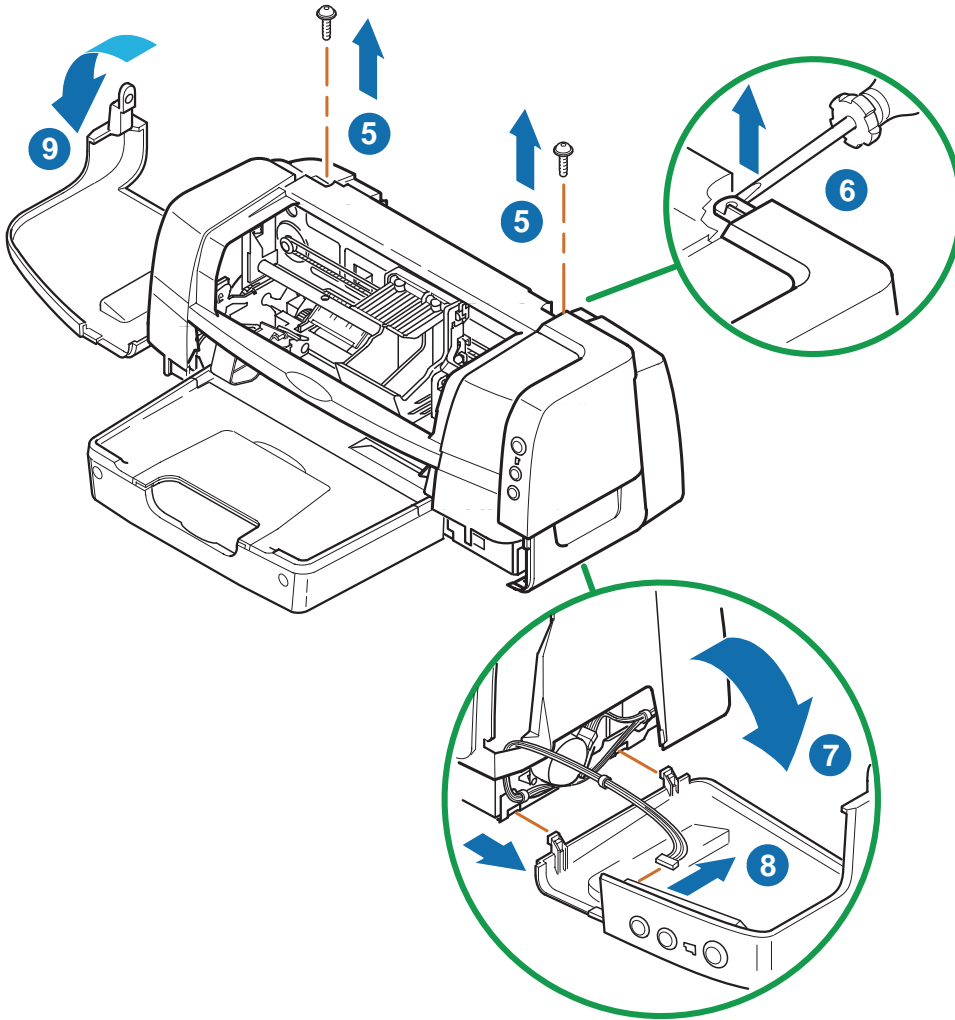
CASE PARTS.....	1
INPUT TRAY ASSEMBLY.....	4
INPUT TRAY ASSEMBLY.....	5
INPUT TRAY.....	6
PAPER MOTOR	7
CABLE HARNESS	9
WING FRAMES AND PAPER PUSHER	10
POWER SUPPLY	11
MAIN PCA	13
BEAD FERRITE	14
PICK FEEDROLLER ASSEMBLY.....	15
SPOT SENSOR ASSEMBLY (NOT APPLICABLE FOR 94X & 92X)	16
ENCODER STRIP / CARRIAGE ROD	17
CARRIAGE ASSEMBLY	18
CARRIAGE MOTOR ASSEMBLY / TURNAROUND ASSEMBLY	20
INNER PAPER GUIDE / UPPER PAPER GUIDE	21
FEEDROLLER ASSEMBLY	23
PAPER DRIVE	24
LOWER PAPER GUIDE	25
CHASSIS ASSEMBLY	26
HUMIDITY INTERCONNECT PCA	27
SERVICE STATION.....	28

Case Parts

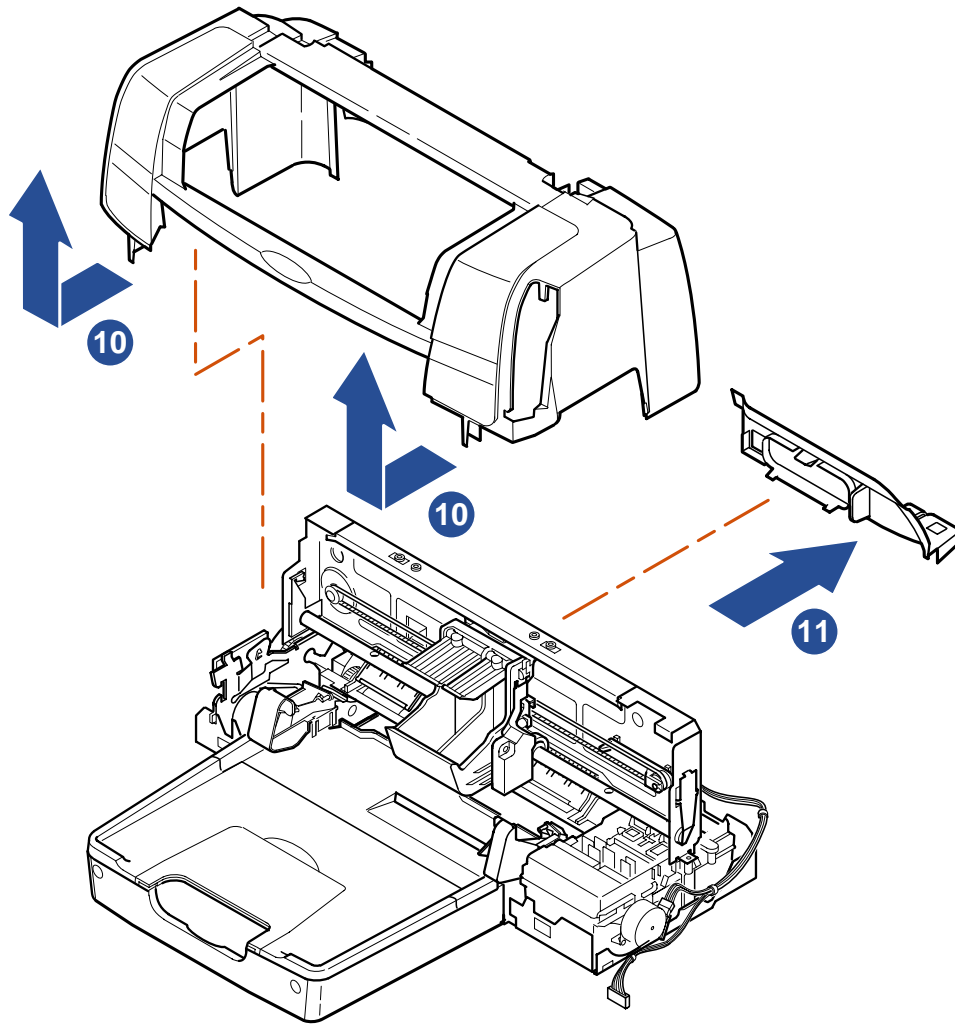
1. Remove the Rear Cleanout.
2. Lift the Access Door Assembly into a vertical position and pull upward to remove it.
3. Release the tab from underneath the unit and remove the Right Trim from the lower right side of the unit.
4. Repeat step 3 for the Left Trim on the lower left side.



5. Remove two Side Case Screws from Top Case on top of the unit.
6. Using a screwdriver, gently pry up on the top tab of the Right Side Case.
7. Rotate the Right Side Case downward until the bottom tabs can be released.
8. Detach the cable from the Keypad.
9. Repeat steps 6 and 7 to remove the Left Side Case.

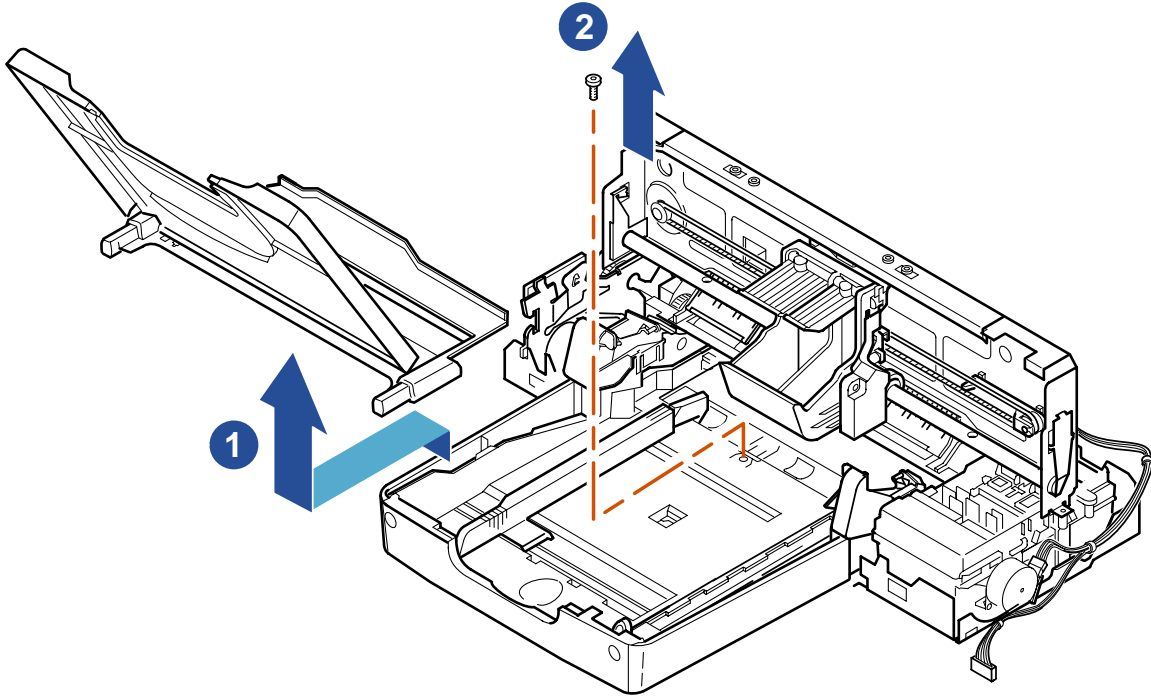


10. Gently pry out the tabs on the lower left and lower right front of the Top Case, then lift to remove.
11. Remove the Cover-Connector.



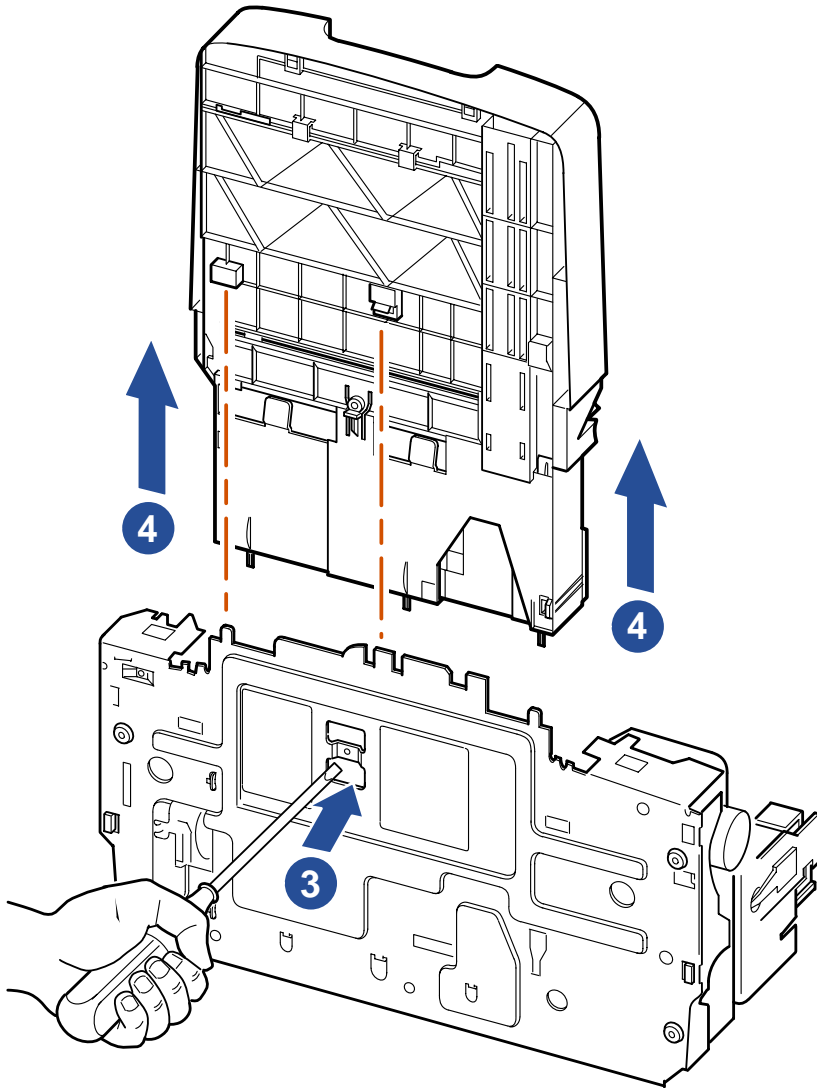
Input Tray Assembly

1. Lift Output Tray Assembly, slide it forward and remove it from the Input Tray.
2. Locate the screw in the center-rear of the Input Tray and remove.



Input Tray Assembly

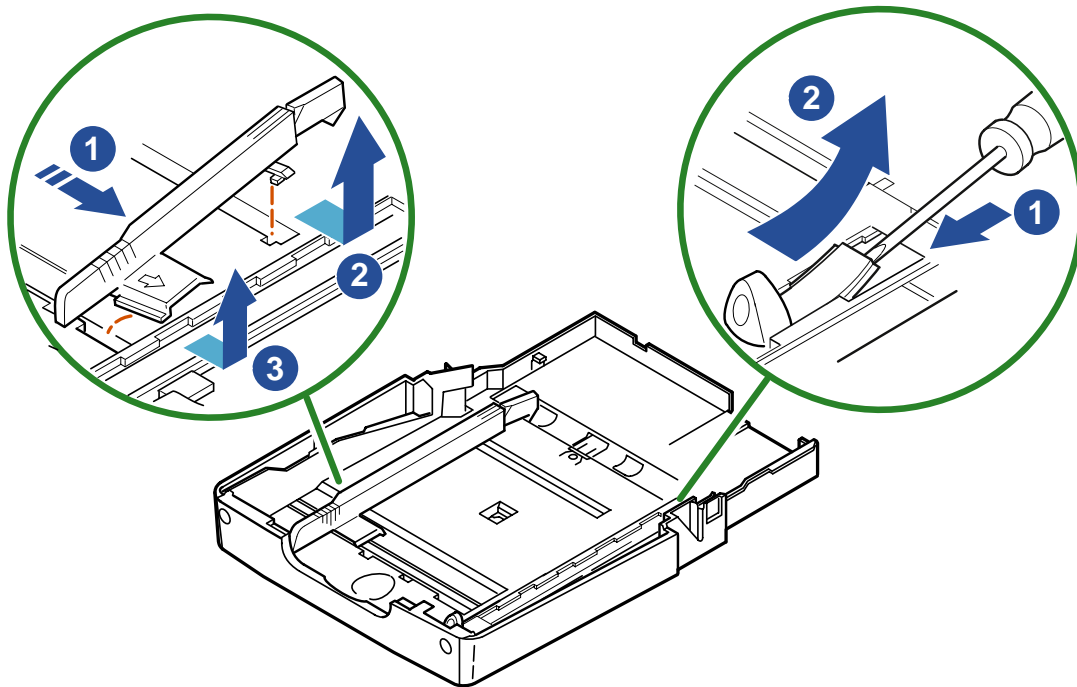
3. Rotate unit upward so it rests on its back. Using a screwdriver, press through the slot in the bottom of the unit to release the tab.
4. Gently pull upward on the Input Tray until the tabs have disengaged. Remove the Input Tray.



Input Tray

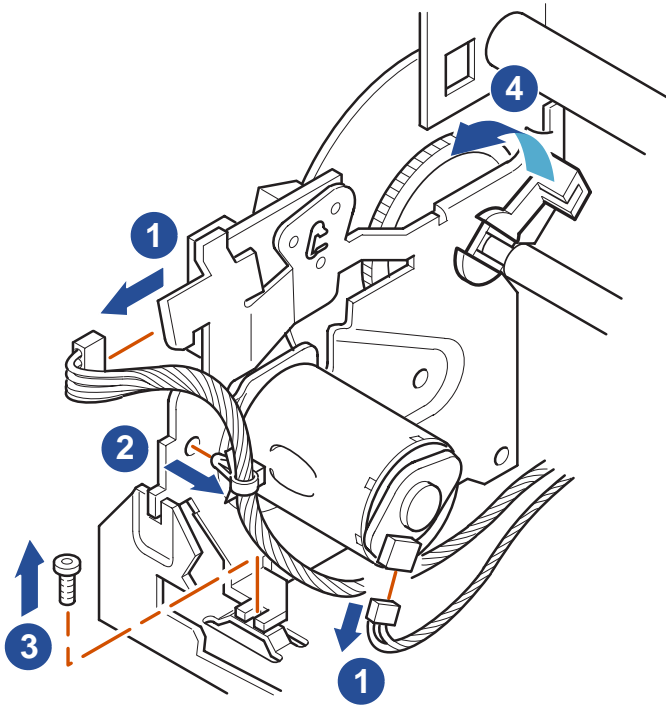
1. Slide Assembly Width Adjuster to far right.
2. Lift up top end of Width Adjuster so that it clears the lip of the tray.
3. Continue pushing the lifted assembly to the right to remove it from the tray.

1. Slide Length Adjuster towards the back of the tray until it is positioned halfway between the front and back. Then remove Length Adjuster by lifting up its back edge with a screwdriver while pushing it into the tray.
2. Continue to push until it clears the tray.

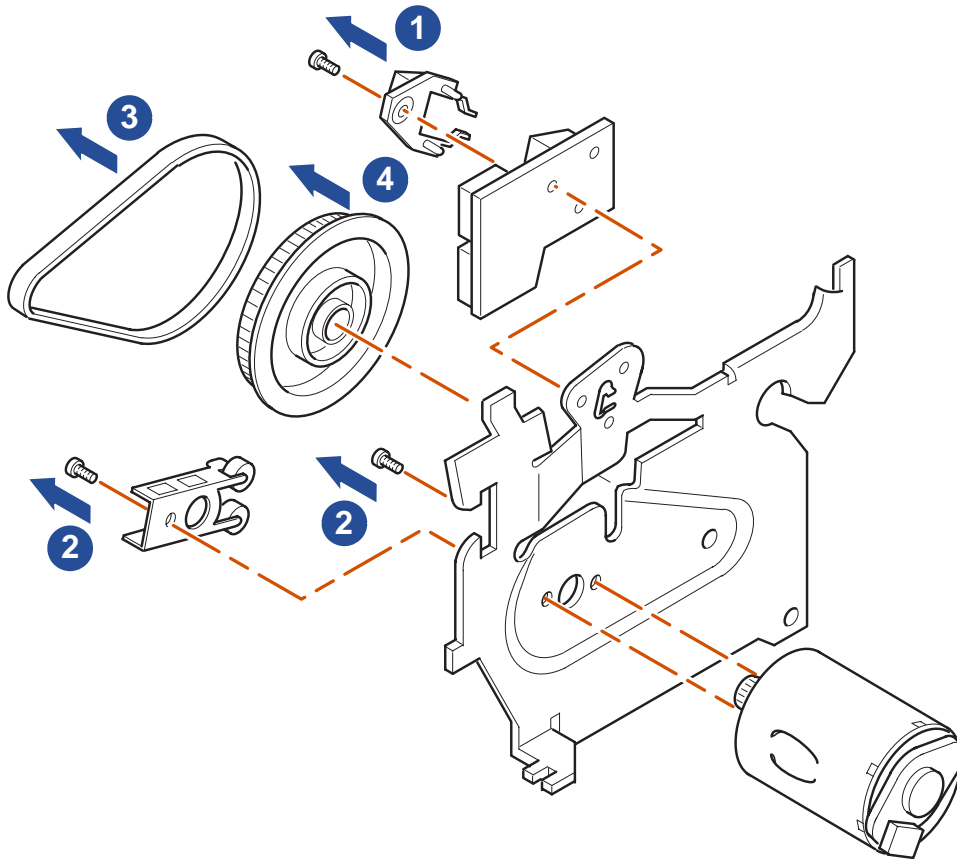


Paper Motor

1. Disconnect Cable Harness from Paper Motor Drive and Paper Encoder PCA.
2. Remove Cable tie by compressing with needle-nose pliers.
3. Remove screw that holds Paper Motor Drive Assembly in place.
4. Release the bearing connecting Paper Motor Drive to Feedroller Assembly by rotating it forward to unlatch it.
5. Lift Paper Motor Drive Assembly out of Chassis.



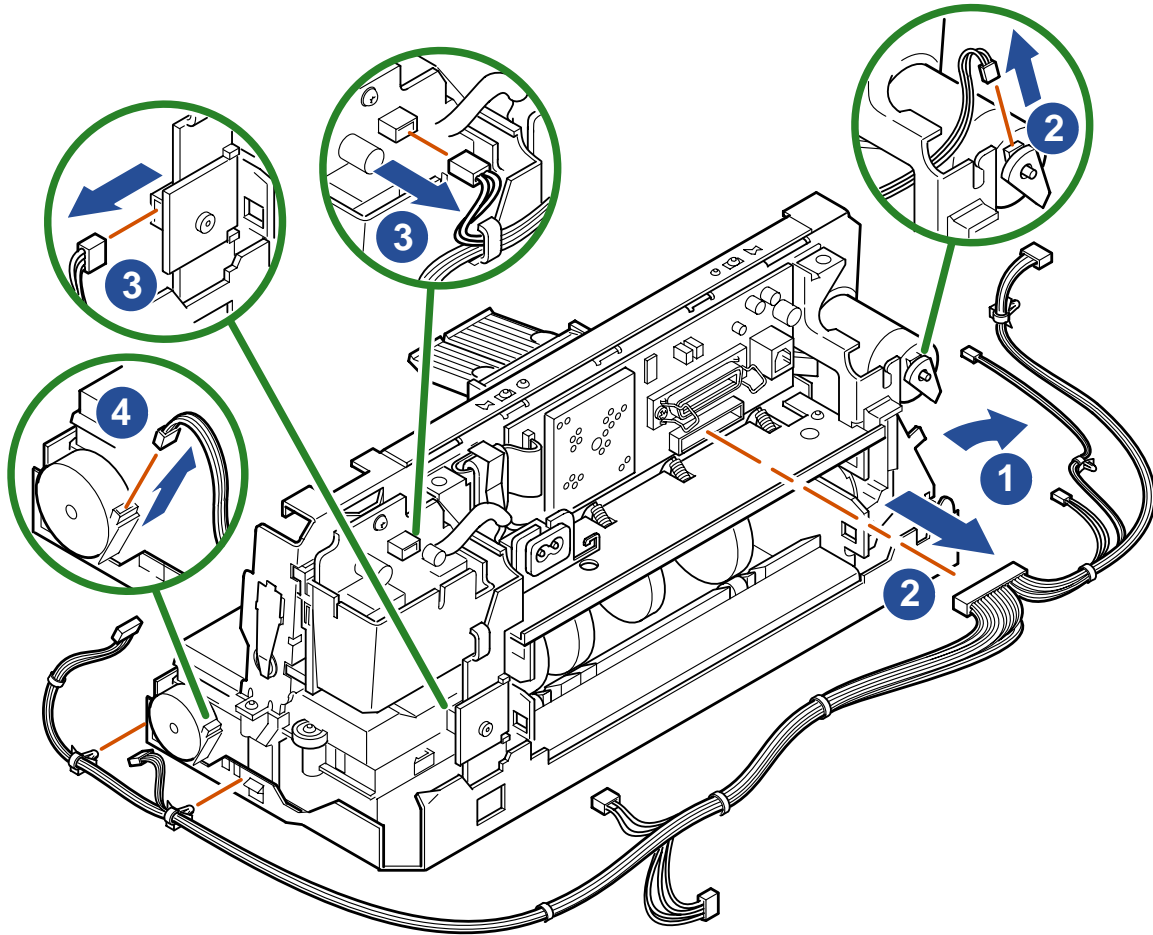
1. Remove T-8 Taptite Screw, which secures Encoder PCA to assembly. Lift off Encoder Guide and PCA.
2. Remove the two T-8 Screws holding the Paper Motor Assembly to the Motor Bracket. Remove Paper Motor, and Idler Assembly.
3. Remove the Paper Belt.
4. Remove the Stealth Cluster Gear.



Cable Harness

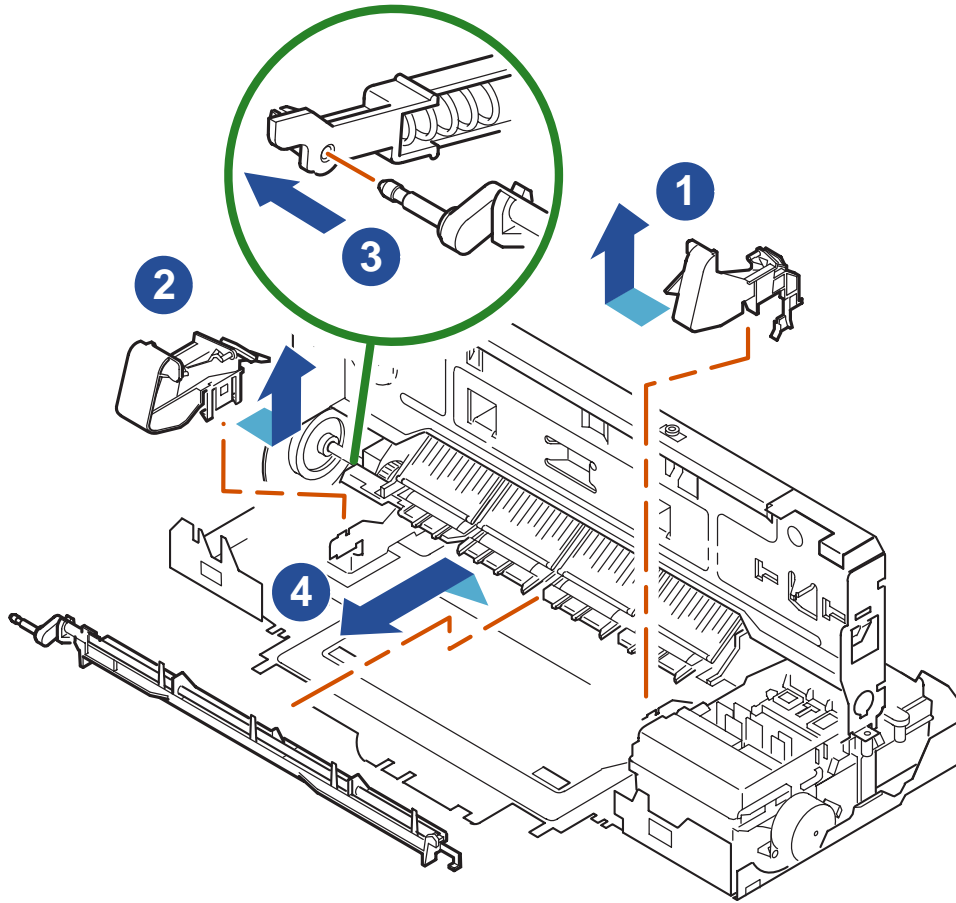
1. Facing the back of the unit, free Cable Harness Assembly from right side of unit.
2. Disconnect cable from Carriage Motor and Main PCA.
3. Disconnect cable from Humidity PCA and Power Supply PCA.
4. Disconnect cable from Service Station Motor and Chassis.
5. Lift away Cable Harness Assembly.

Note: Handle connectors, rather than wires when disconnecting Cable Harness Assembly.



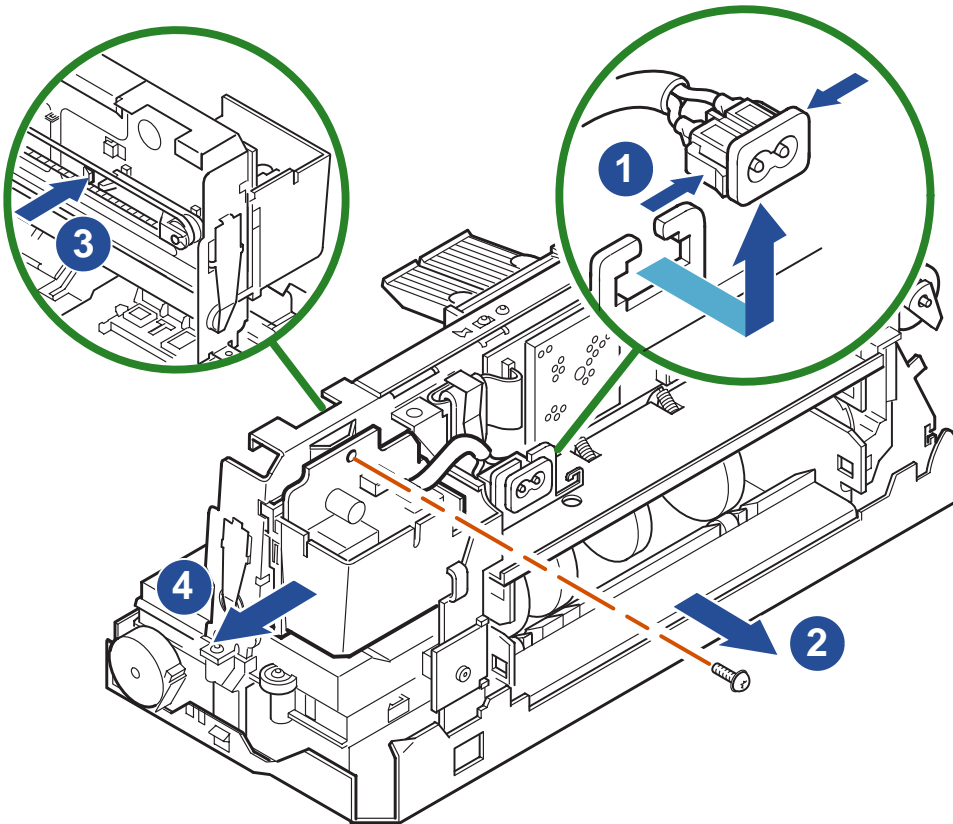
Wing Frames and Paper Pusher

1. Release the two tabs that connect the Right Wingframe Assembly to the Chassis. Lift Wingframe up and away.
2. Repeat steps for Left Wingframe Assembly.
3. Release tab and remove Pin Linkage Assembly that connects Pick Gear to Paper Pusher Assembly by sliding it to the left.
4. Raise and lift out Paper Pusher.



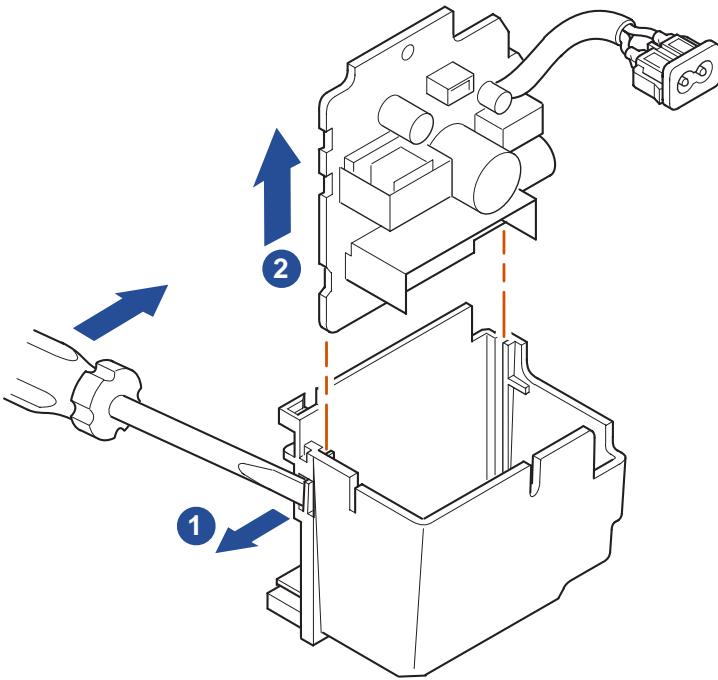
Power Supply

1. Rotate printer so that you are facing the back of the unit. ***Make sure that Power Cord is disconnected at this time, because there may be dangerous voltage applied.*** Use slip-joint or needle nose pliers to squeeze in plastic latches on either side of the AC Connector to release cable from IEC Bracket.
2. Remove Power Supply PCA mounting screw.
3. Release tab connecting Housing to Backbone by pressing it in with a screwdriver from the opposite side of the printer. Slide Housing to the right and lift out.



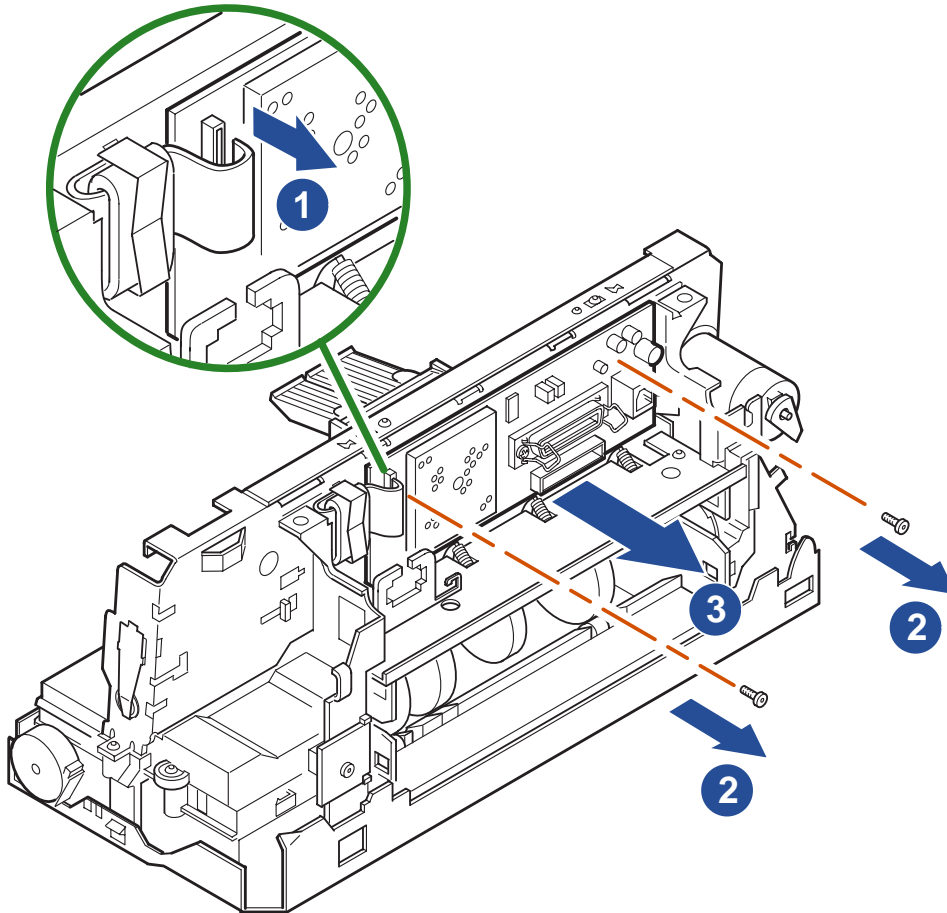
DeskJet 61xx Disassembly Procedures

1. Deflect tab on left side of Power Supply Housing.
2. Slide Power Supply PCA out of Housing.



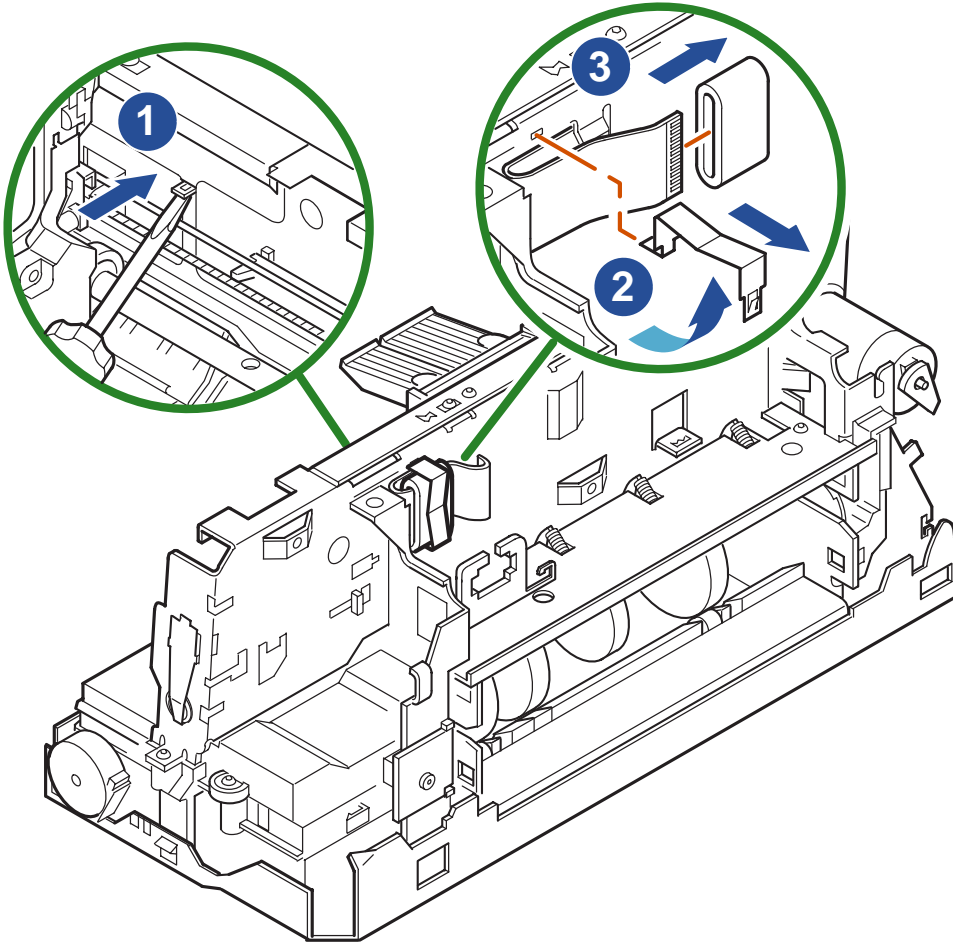
Main PCA

1. Detach Flex Head Driver Cable from Main PCA.
2. Remove two screws.
3. Lift out Main PCA Assembly.



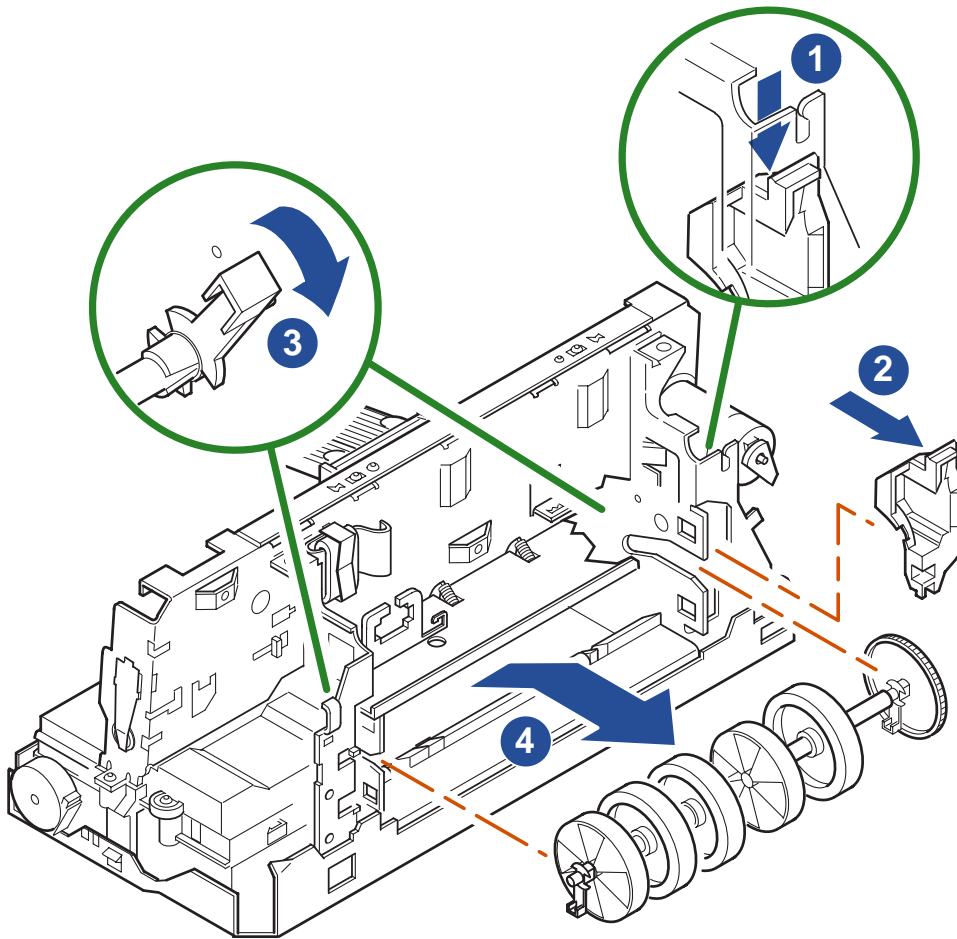
Bead Ferrite

1. Deflect tab, which holds Ferrite Clip in place.
2. Push Clip through to other side of unit and remove it.
3. Slide Ferrite off of Flex Head Driver Cable.



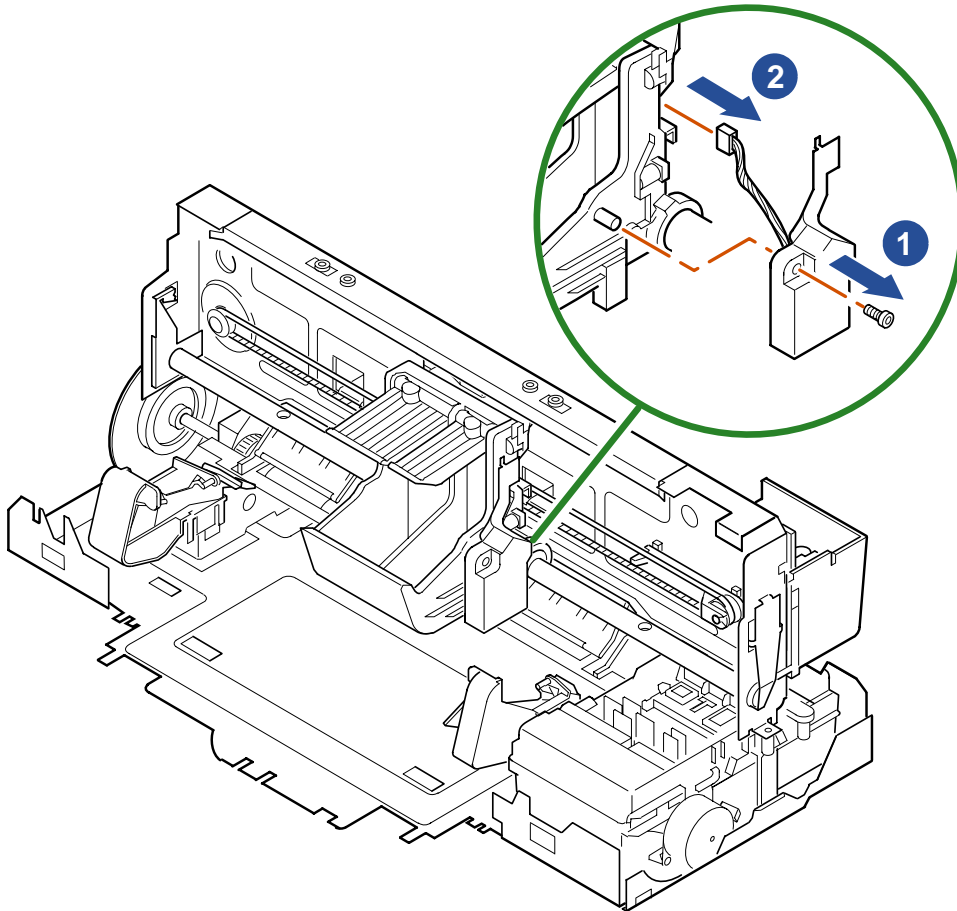
Pick Feedroller Assembly

1. Press tabs on the top and bottom of Gear Gaurd to rock it out of the slot.
2. Remove Gear Gaurd.
3. Rotate Polar Bearing on right side forward to release. Rotate Polar Bearing on left side forward by reaching through Chassis.
4. Lift out Pick Feedroller Assembly.



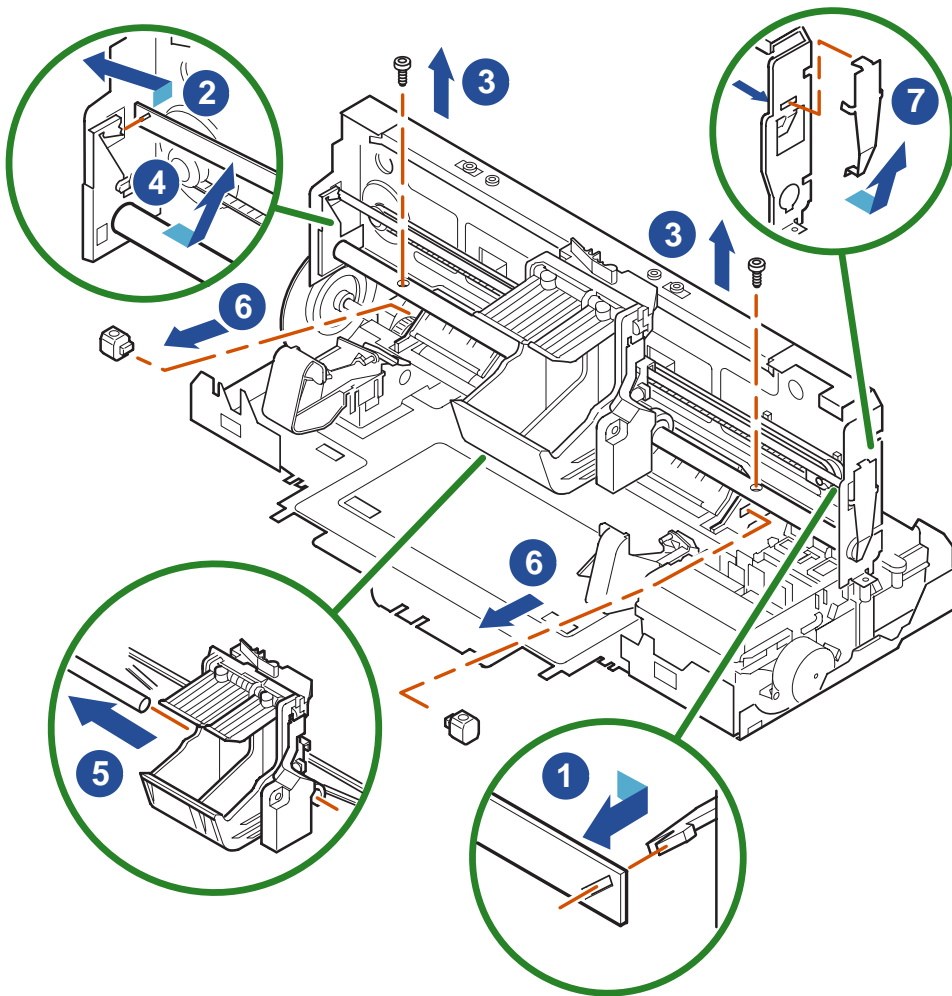
Spot Sensor Assembly (not applicable for 94x & 92x)

1. Remove screw, which secures ESD Cover to Carriage Assembly.
2. Disconnect Spot Assembly Cable from Carriage PCA.
3. Unplug Spot Assembly Cable from Spot Sensor Assembly.



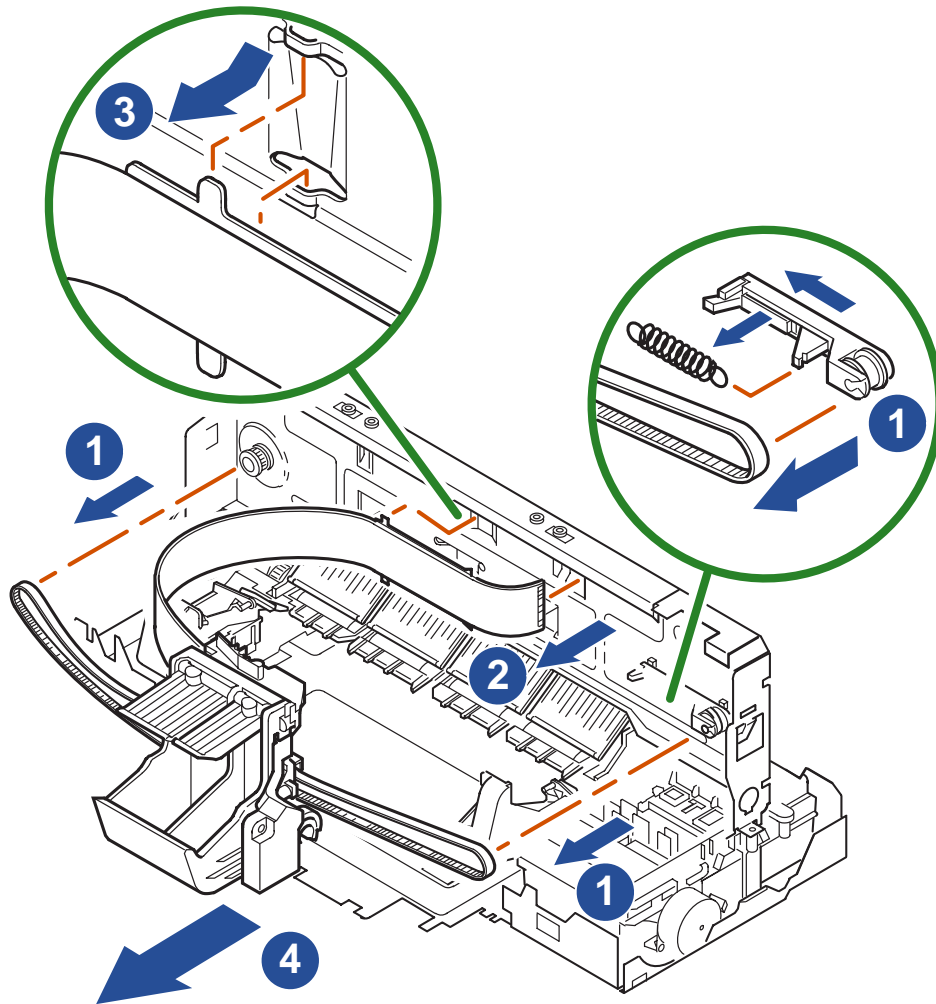
Encoder Strip / Carriage Rod

1. Release Encoder Strip from catch on right end of Chassis.
2. Release from Encoder Spring on left end of Chassis and remove from Carriage Assembly.
3. Remove two Special Screws, which hold the Carriage Rod to the Chassis.
4. Push Carriage Rod to right to release it from Backbone and lift it out.
5. Slide Carriage Rod out of Carriage Assembly.
6. Remove two Rod Mount Clips by rotating them 90 degrees and removing them from Chassis.
7. The Encoder Spring will detach when Carriage Rod is removed. Pull spring away from Chassis to release tabs.

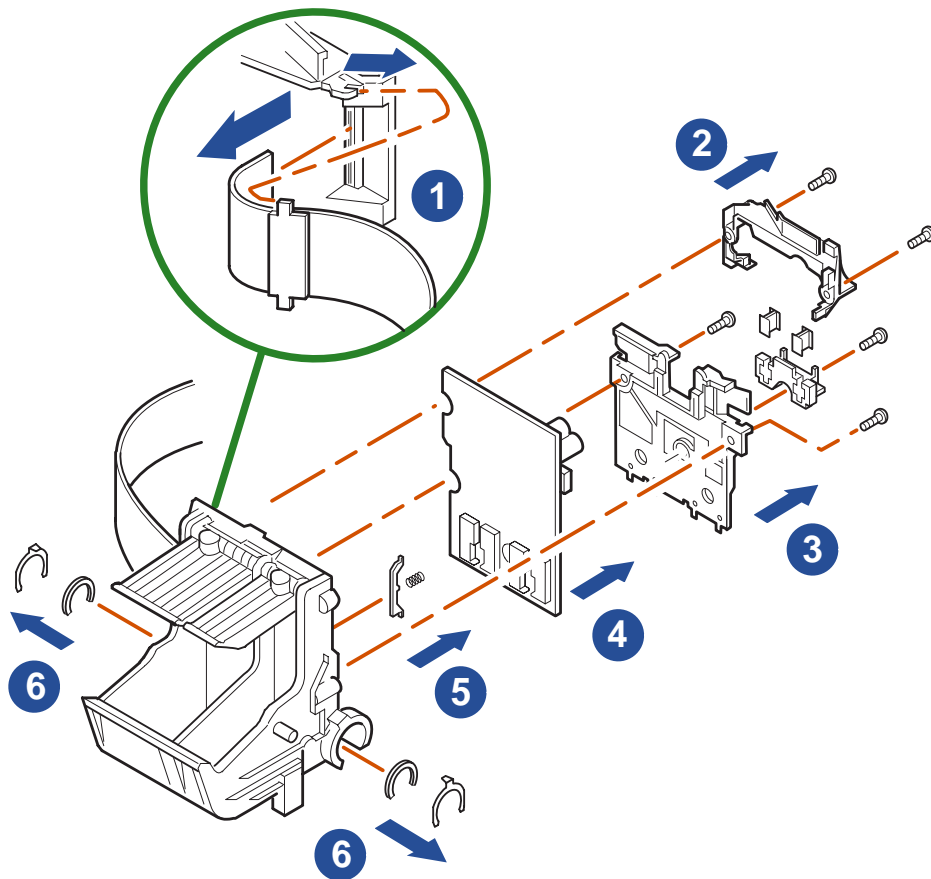


Carriage Assembly

1. Remove Belt Tension Spring to slip Carriage Belt off of Chassis.
2. Feed Flex Head Driver Cable through Backbone from back to front.
3. Flex cable to free tabs from Backbone.
4. Remove Carriage Assembly.

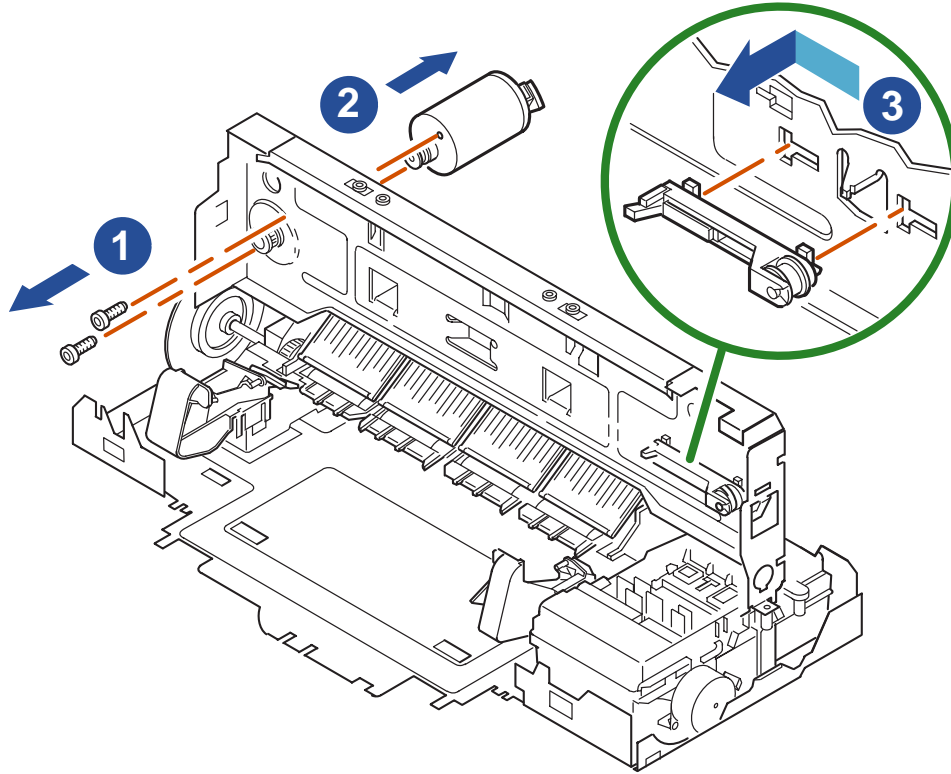


1. Flex cable to remove from tabs on Carriage Assembly, then disconnect cable from Carriage PCA and Slider. Flex Belt to remove it from Belt Attach Base (not shown).
2. Remove two screws connecting Slider to Carriage Assembly.
3. Remove three screws securing Belt Attach Assembly to Carriage Assembly and then remove Belt Attach Assembly. Remove Belt Attach Tower from base. Remove Belt Attach Beam from tower.
4. Carriage PCA will be released when Belt Attach Assembly is removed. Lift it away.
5. Remove ESD Springs from blades.
6. Remove Felt Retainer by prying it away with knife or sharp object. Remove Felt Lubrication.



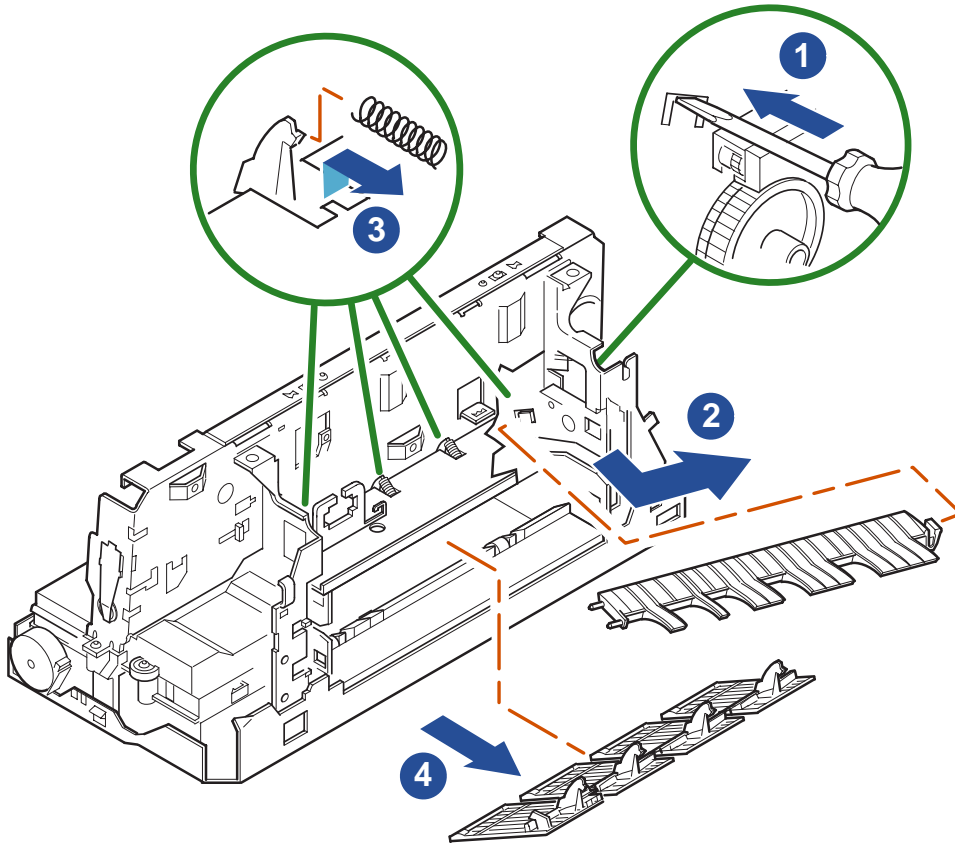
Carriage Motor Assembly / Turnaround Assembly

1. Remove two screws, which secure Carriage Motor to Backbone.
2. Lift out Carriage Motor.
3. Slide Turnaround Assembly to the left while depressing tab on back, and lift out.



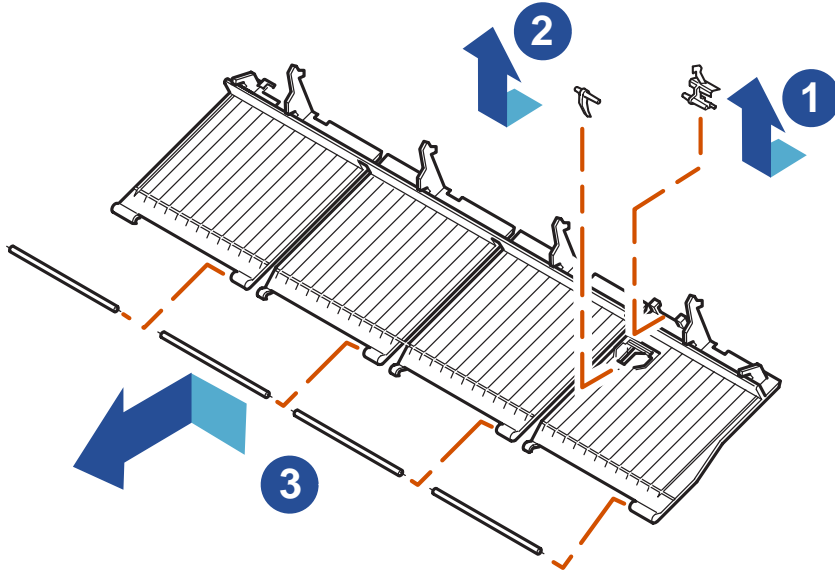
Inner Paper Guide / Upper Paper Guide

1. Deflect tab on right side of Inner Paper Guide Assembly.
2. Slide assembly to the left and lift out.
3. Remove Pinch Springs, which secure Upper Paper Guide. Use caution when handling the Upper Paper Guide, it breaks easily.
4. Pull Upper Paper Guide backwards until it drops free of Upper Paper Guide Hanger and remove.



DeskJet 61xx Disassembly Procedures

1. Twist and lift out DOOPS Flag from Upper Paper Guide.
2. Rotate OOPS Flag downward, and lift out gently.
3. Slide Pinch Rollers sideways and lift them out of guide.

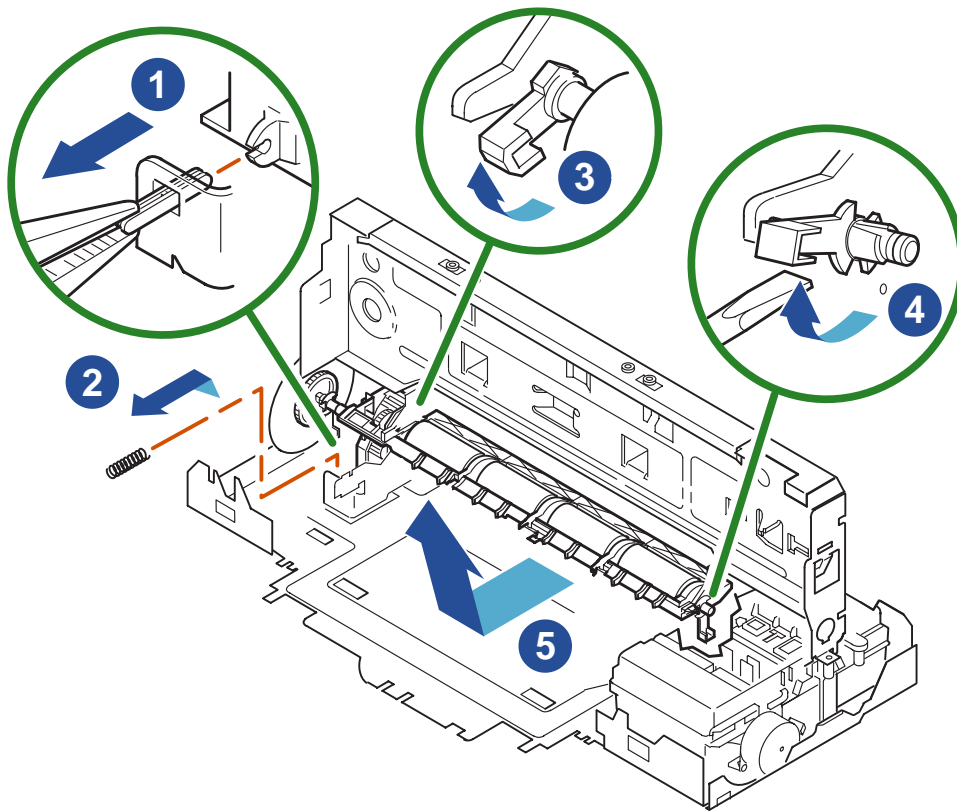


Feedroller Assembly

1. Grasp Caber Pin with needle-nose pliers and pull it forward until it snaps out.
2. Lift out Shifter Spring.
3. Release left Polar Bearing by rotating it forward.
4. Release right Polar Bearing using screwdriver.
5. Lift out Feedroller Assembly.

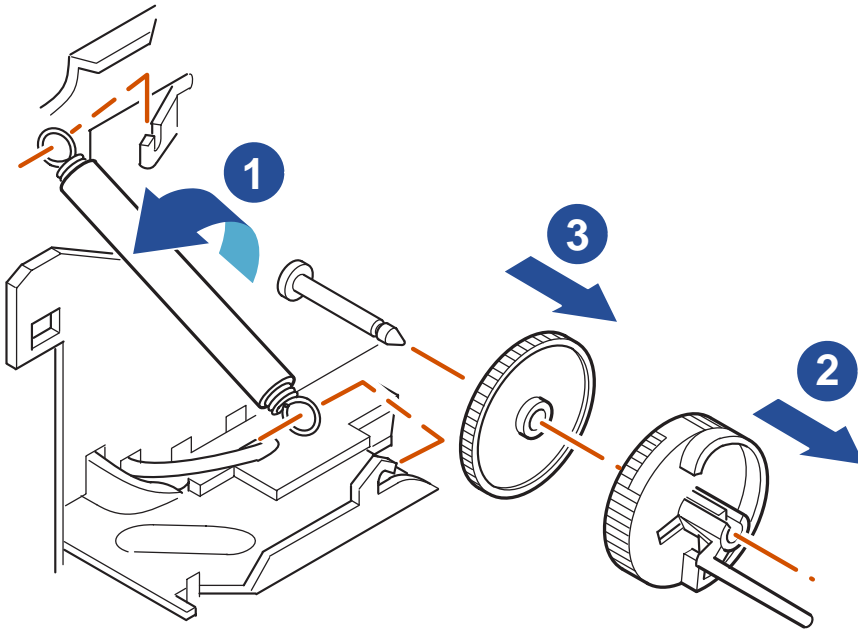
Snap Pivot away from Feedroller.

If necessary, remove Encoder Disk by peeling it off. Note: The Encoder Disk is a one-time use part. If removed it must be replaced.

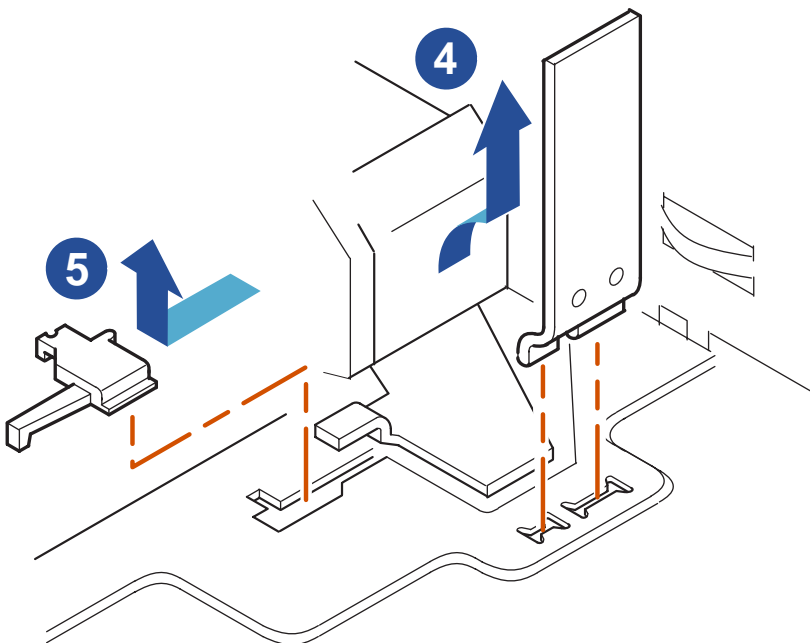


Paper Drive

1. Detach Lifter Spring from Chassis.
2. Deflect side latch and pull off Kick Cam.
3. Lift off Feedroller Idler Gear.

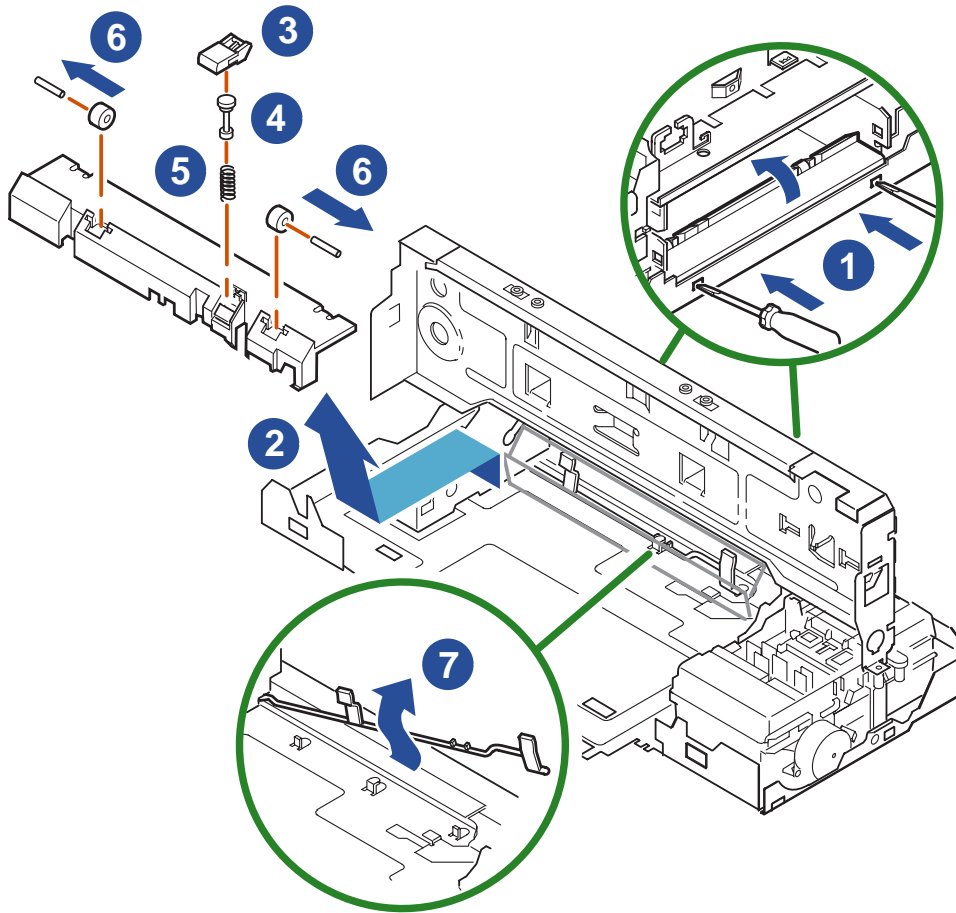


4. Rotate Pressure Plate Lever upwards to lift out.
5. Raise side tab on Separator Lifter, slide to the left, then lift out.



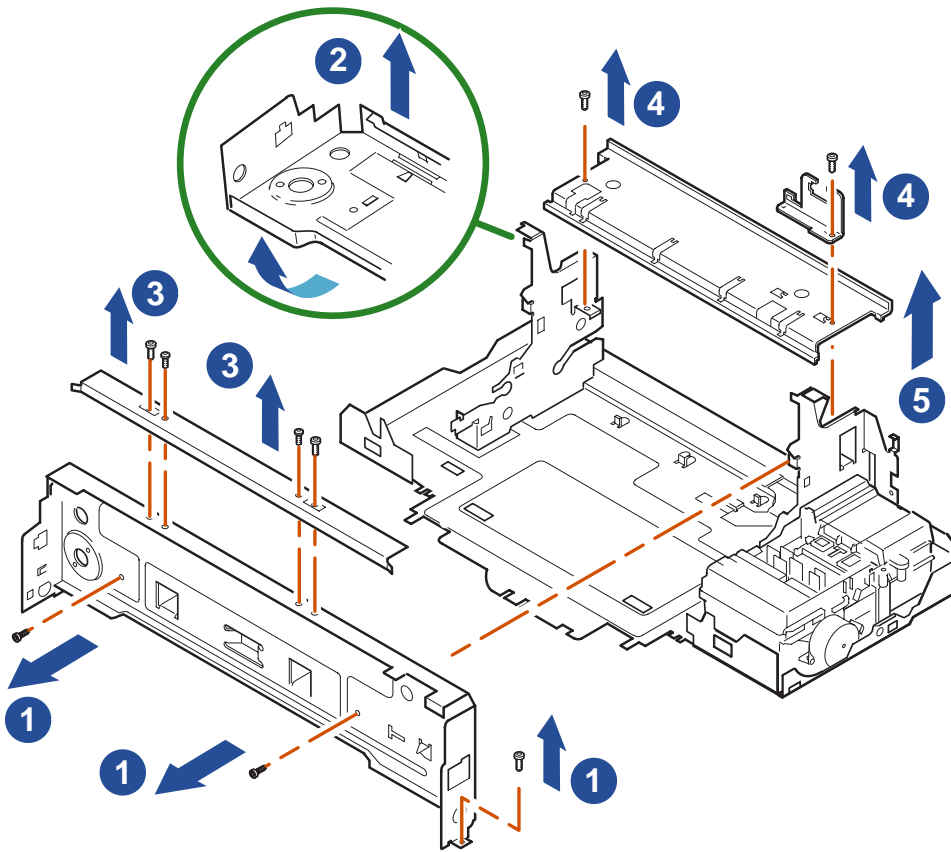
Lower Paper Guide

1. To free Lower Paper Guide, deflect latches on both sides with a screwdriver.
2. Tilt Lower Paper Guide backward and lift it out.
3. Lift out Separator Pad.
4. Lift out Separator Peg.
5. Remove Spring from Peg.
6. Lift out Rear Rollers and remove Rear Roller Springs.
7. Rotate Kicker and flex around tab to lift out.



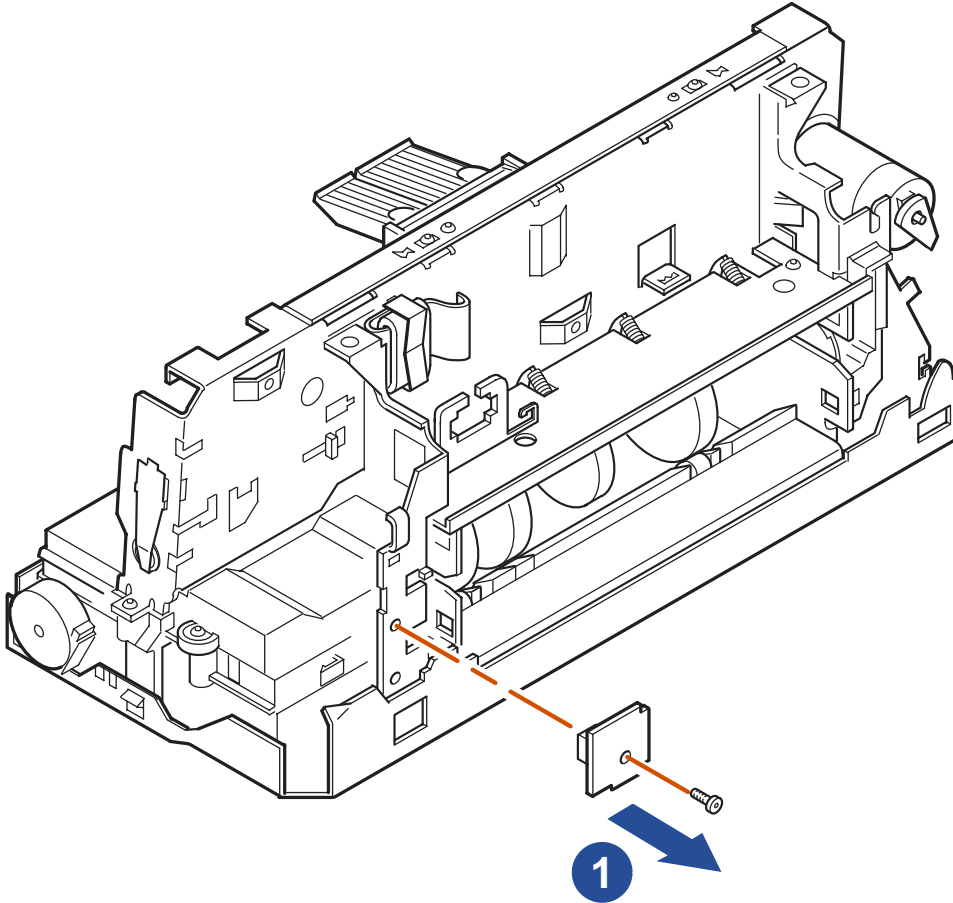
Chassis Assembly

1. Remove one screw on right side, and two screws on vertical face, which secures the Backbone.
2. Tilt and lift away Backbone.
3. Remove four screws (black and silver tapite) on top of Backbone to remove Upper Rail.
4. Remove two screws securing IEC Bracket and Cleanout Flag Stop from Upper Paper Guide Hanger.
5. Lift and flex Upper Paper Guide Hanger to remove it from Chassis.



Interconnect PCA

1. Remove screw, which connects Humidity Interconnect PCA to Chassis and remove PCA.



Service Station

1. Deflect tab on right and lift out Service Station.
2. Pry out Grounding Clip from the Chassis using a small screwdriver.

