



Intelligent Door Peephole Viewer User Manual

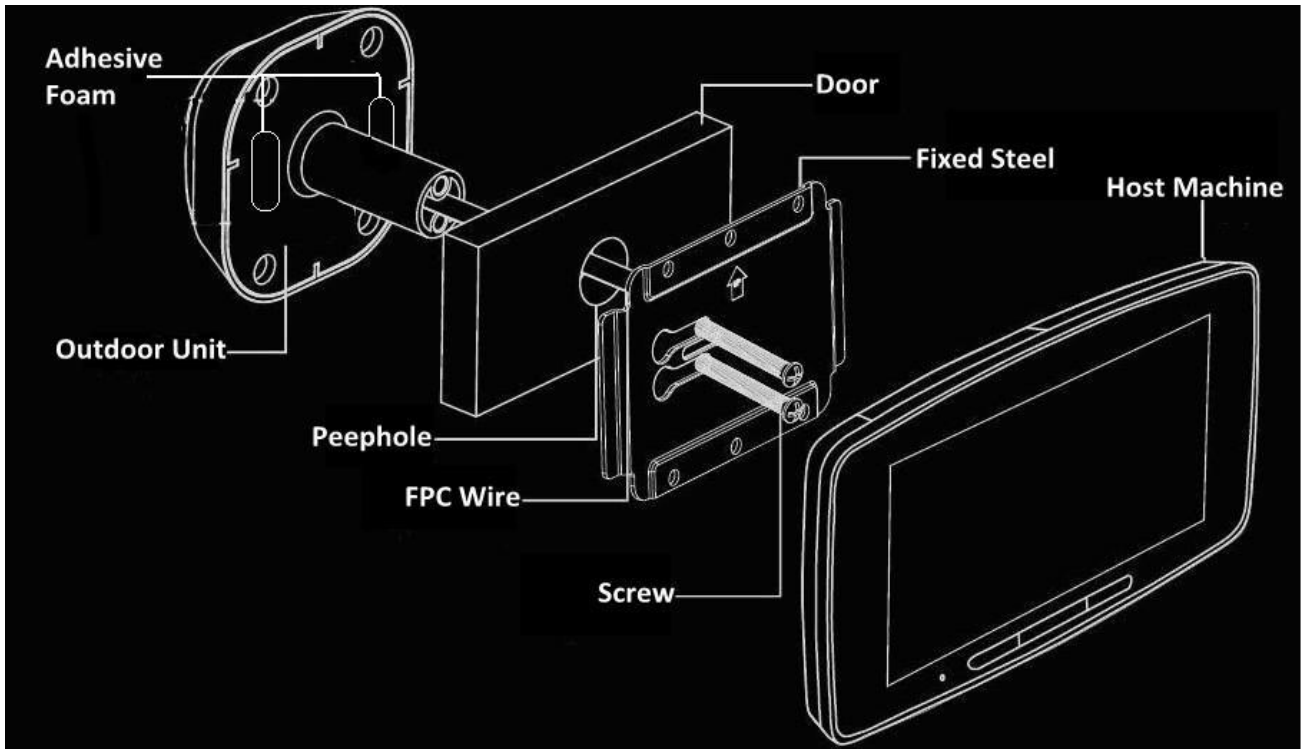
NS- K800 Version

Contents

- 1 × Indoor & Outdoor control unit
- 1 × Micro-SD card
- 1 × User manual
- 1 × Warrant card
- 1 × Fixed sheet steel
- 1 × Lithium battery, built-in Li-Pol
- 1 × Power adapter
- 1 × USB data wire 3 meters
- 1 × Two pairs screws, select one only pair which is according to the door thickness

Parameter

Indoor control unit	142×88×13.5mm
Screen	5" HD LCD Touch Screen
Outdoor control unit	61×61×14.1mm
View angle	165 degrees
Door peephole diameter limits	12mm ~ 60mm
Door thickness limits	35mm~ 90mm
Power source	1400mAh, 3.5V~4.5V
Charging	Battery charge directly via the Micro USB at the bottom of the host machine; Use adapter to charge.
Language	1. Domestic Version (English & Chinese) 2. Oversea Version (English, Spanish, French, German, Portuguese, Russian, Italian, Turkish, Ukrainian, Arabic, Farsi, Hindi, Vietnamese, Filipino, Thai).



Installation Details

First Step: Install outdoor unit

1. Clear out of the door which is part of outdoor unit area, make it clearly, could be more easy to stick on the door by adhesive foam.
2. FPC wire of outdoor unit across door peephole
3. Set right position of outdoor unit, tear off back of adhesive foam(pic1)



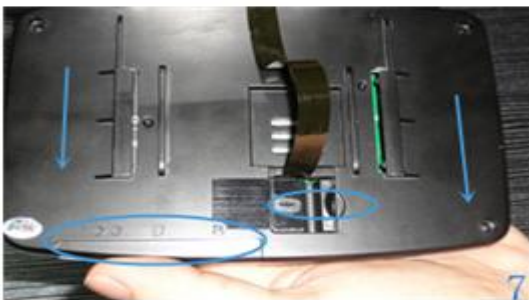
Second Step: Fix outdoor unit

1. FPC wire across middle of flat shape hole of fixed steel(pic 2)
 - ΔFPC wire must be through via flat, could not be voluble.
 - ΔOn fixed steel "UP" upwards and faces to inner of door.
 - ΔNotice peephole position and direction when FPC through fixed steel.
2. Press fixed steel on door, fix the first screw(pic 3)
 - ΔBlue arrowhead points out correct position, red is wrong
 - ΔPress fixed steel when installs first screw, and notes do not slide steel disc when tightens the screws
 - ΔThe fist screw fix above on FPC wire
3. Fix the second screw(pic 4)
 - ΔRaise up FPC wire, and look out do not scratch wire.
 - ΔTighten up screw, otherwise, FPC wire would be easy to be scratched by screw nut.



Third Step: Connect host machine

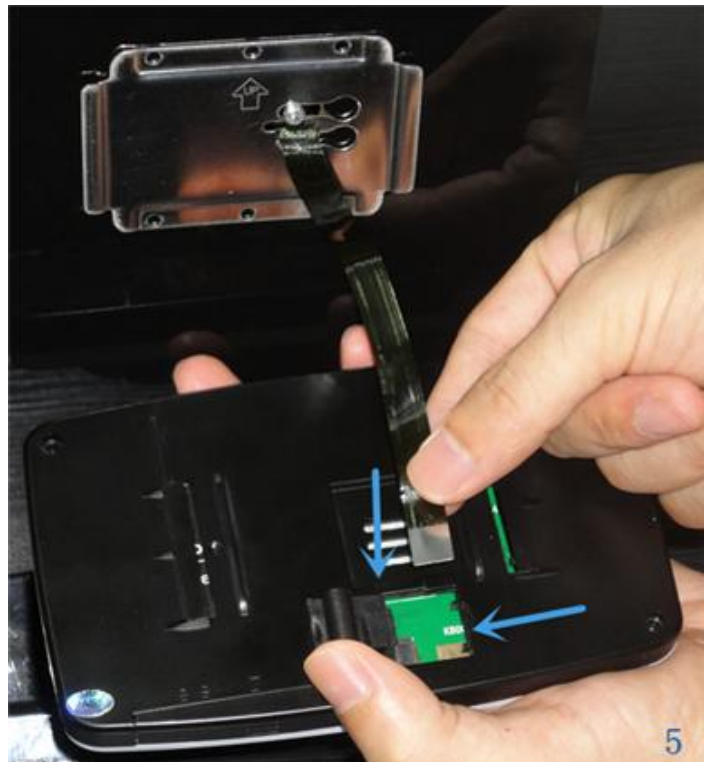
1. Open the cover of connector
2. FPC binding head buckles host machine(pic 5)
 - 1).Attention: hold host machine by hand, make connector close to thumb
 - 2).Metal square piece upwards
3. Buckle connector of host machine, in picture mark two black points side press slowly to flat(pic 6)



Fourth Step: Install host machine

1. Press FPC wire softly, make it bend and close to back of host machine side (pic 8)
2. Host machine slot aim at fixed steel, buckle on steel slowly(pic 9)

Remark: The show-how is in display rack(50mm), such as most of doors




4. Then cover after connect done(pic7), please notes mark position on reference



Structure illustration

A. Outdoor Unit




3. IR/Motion sensor: Any subject/People that has temperature and take moving, stay in front of door over 15s(time can be setting), it can know auto, doorbell light will be on  specially at night, can see clearly, auto transfer data to host machine.

4. LED: support day/night vision, IR range 3 meters.

5. Outdoor MIC: Leave record video and leave voice message to host. And if host machine be installed SIM card, can talk with host via mobile directly.

6. Outdoor Speaker: Receive host voice that is from host's mobile base on SIM card inside of host machine.


7. Camera: 165°security Wide angle lens, monitoring in front of door, take photo,video, record video for leaving message.


6. Doorbell: When press  will be on for inside light, and inform host that somebody is in front of door.

B. Indoor unit (Host machine)



1. Indoor MIC: Speaker hole, talk with guest

2. Phone Dial: Press , can call any number base on GSM SIM card(850/900/1800/1900 MHz) inside of host machine.


3. Camera: Press , can monitor outdoor and watch in front of door subject, take photo(can be option).

4. Power On/Off: Press  5s, could turn On/Off device

5. Reset: Turn Off device forcibly, but will save ex-operation information

6. USB Port: Bottom of machine, recharge and transfer file data port

I. Photos: After take photo, check , top right Conner be shown photo's quantity.

II. Video: After take video or record video of leaving message, check , top right Conner is shown video's quantity.

III. Mode Switch: Home Mode/Outside Mode 

IV. Menu: Function details 

C. Function panel



1. Photos/Video: Check photos/video document, can be canceled one by one or all.



2. Number: Guest can talk to host through phone, auto call the number that default bind with device, totally five number that could be binding.

Noted: Only these five numbers' phone make auto response for doorbell, the others call, remind answer or not.



3. Dialed: How many calls has been called details



4. Inbox: MMS be sent details, which are about guests' photos to send host mobile phone



5. Calendar: check date (day/month/year)



6. Monitor:

1)Monitor Trigger: Can be setting 1s/3s/5s/10s/15s/20s/off, means how long time can auto take photo when guest is in front of door, when be set "off", won't take photo.

2)Monitor Warning: Can be setting 20s,30s and off, means how long time doorbell button can be known subject whether is in front of door, the light also will be on. When be set "off", won't know, and light won't on neither.

3)Sensitivity: Can be setting Low, Medium and High, means what's monitor level, mostly be set "High"

4)MMS Alert Switch: On/Off, it bases on SIM card in device before use, bind a GSM mobile phone number first, Sets" On". Otherwise, no MMS will send to bonding phone.

5) LED switch: On/Off, when guest press doorbell or monitor warning, the LED will be on, if be set off, the light will not be on.

6) Data account: mobile operator parameter(mostly no need extra-setting)



7. File System: Edit photo/video document, can check/delete.



8. Settings:

1) Time and date: set home city/date & format/time & format

2) Tone settings: set different tone of doorbell, change press button tone, voice volume

Remark: Can change any tone what you like, especially tone should be in TF-card first, can download to TF-card, and choose it from there directly, tone should be MP3 format.

3) Display setting: change wallpaper picture/LED back light brightness and be shown of Time/Pen calibration, set touching of calibration

Remark: if change wallpaper picture, the picture should be in TF-card first, picture: 480*272 jpg format.

4) Record Format: Take photo, Preview Size 320*240, 3 shots, 5 shots (option)

Record video, 3s/5s/10s/15s (option)

Record video for leaving message, default 10S.

Remark: If choose record video, then MMS alarm could not work at the same condition ;

5) Language: English, German, French, Spanish, Portuguese, Russian, Italian, Turkish, Ukrainian, Arabic, Farsi, Hindi, Vietnamese, Filipino, Thai can be option (domestic version only Chinese and English language)

6) Restore factory settings: Factory reset



9. Help

1) Installation guide: diagram for installation

2) System Information: none

3) Copyright: none

4) Contact us: none

Function explanation

Home-mode

1. When guests approach the door, the doorbell button lights, remind guest to press it; when guest is out of monitoring area, the light is off.

2. If the guest presses the button, the doorbell rings, the screen would show the guest's picture and take photo.

Outdoor-mode

2.1 When guests press the doorbell, speaker: "Hello, I am not at home, please press the doorbell to leave a message **AFTER** the beep, thank you! "

2.2 Within 5 seconds if guests press the button again, the doorbell beeps, then records the video message (default record 10s).

2.3 After the video message, speaker: "If you are in urgent for me, please press the doorbell again to call my phone, thank you!" Within 5 seconds if guests press the button again, the doorbell will

call the host (dials the pre-set number), put through, guests can speak with the host via the doorbell.

Intelligent security function

1. If guests stay in front of door over 15 seconds, without pressing the doorbell button, indoor unit buttons light and flicker, remind to have guests out of the door.
2. MMS is against illegal visitor behavior: If guests stay in front of door over 15seconds (the time can be set) without pressing the doorbell button, the viewer auto take photo or take video, save it into T-card and send a MMS alarm to the host (can be chosen to use or not), and the alarm sounds at the same time (can be chosen to use or not).
3. When guest presses the doorbell button, the viewer takes photo and stores it, the indoor bell rings at the same time; the indoor screen lights, shows the guest outdoor.

Communication function

If urgent, Guests can press the doorbell button again to remote call with the host phone of binding.

Features

1. Support infrared monitoring and infrared night-vision function (within 3m).
2. 5.0" HD LCD, touch screen, more convenient.
3. 2 million pixels security wide-angle camera,
4. Double-battery design, never halt. You can take out the lithium battery, recharge it, another build-in battery can support this machine for a week at the most.
5. Support calendar function

Notice

1. SIM-mode & NO SIM-mode

Only put in a effective SIM-card (adapt to GSM cell phone), can it realize the MMS alarm and remote calls function, but if there is **no SIM-card, it also can support** all the function except the MMS alarm and remote calls.

2. Home-mode & Outdoor-mode

Home-mode is defaulted, if you are not at home, you can shift to be Outdoor-mode via control panel. In the outdoor-mode, press the doorbell button, the doorbell will directly say: "Hello, I am not at home, please press the doorbell to leave a message **AFTER** the beep, thank you! "

Warranty card

Product information:

Type: _____

Serious number(S/N): _____

User information:

Name: _____

Address: _____

Phone number: _____

ZIP code: _____

E-mail: _____

Agent information:

Agent: _____

Agent phone number: _____

Buy time: _____