

# IP Camera Centralization Management

# Client Application

(IPCMonitor)

---

Sep, 2012 Version 1.7

# User Manual

## INDEX

|      |                                           |    |
|------|-------------------------------------------|----|
| 1    | Introduction .....                        | 3  |
| 2    | Computer Requirement.....                 | 3  |
| 3    | Installation.....                         | 4  |
| 4    | Devices list.....                         | 4  |
| 4.1  | Adding one device.....                    | 5  |
| 4.2  | Searching and Adding Devices in LAN ..... | 6  |
| 4.3  | Modifying Device information.....         | 7  |
| 4.4  | Deleting Device.....                      | 7  |
| 4.5  | Starting and stopping the Video .....     | 7  |
| 5    | Device setting.....                       | 7  |
| 6    | PTZ Control .....                         | 8  |
| 7    | Group Management .....                    | 9  |
| 7.1  | Set group .....                           | 9  |
| 7.2  | Play by group .....                       | 10 |
| 8    | Schedule Record .....                     | 10 |
| 9    | Alarm setting.....                        | 12 |
| 10   | System Setting.....                       | 13 |
| 11   | Recording playback .....                  | 15 |
| 12   | Manage NVR.....                           | 15 |
| 13   | Other operation and introduction .....    | 15 |
| 13.1 | Basic video operation.....                | 15 |
| 13.2 | Other introductions for device list.....  | 16 |
| 13.3 | Recording strategy .....                  | 17 |
| 14   | Notifications.....                        | 17 |

# 1 Introduction

IPCMonitor is a centralization management software provided by the manufacturer. It provides the central control of monitoring, video capture, record, alarm detection, etc for multiple IP cameras on LAN or WAN.

Before using this software, please ensure the devices can be access by web browsers from LAN or WAN, please consult the user manual of the IP Camera to know the IP Camera belongs to which series (support B/H/B1/Q series products). This article provides a how-to on viewing the IP Camera's video by using this dedicated client application.

## 2 Computer Requirement

Using IPCMonitor, your computer should meet the following configuration:

- CPU: Dual-core CPU
- RAM: 1GB or above
- Hard disk: 160GB or above
- OS: Windows XP or higher
- Resolution of display:  $\geq 1024 \times 768$

## 3 Installation

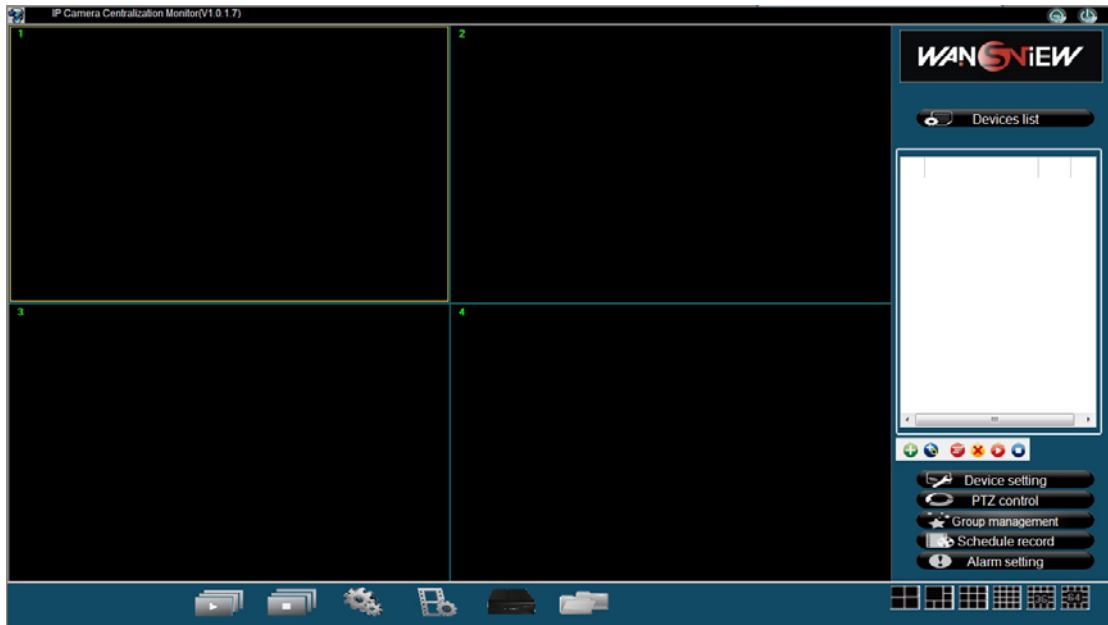


Figure 1: Application User Interface

Insert the bundled CD to the drive, double click IPCMonitor, a pop-up window will be shown, please follow the instruction on the window to finish the software installation. After a successful installation, run the application and the user interface will be shown as Figure 1.

## 4 Devices list

The following steps are required before using this application:

- 1) Plan and install the IP Camera(s) which intend to be monitored.
- 2) Login to the IP Camera(s) by web browser and set the IP address, port, username & password, alarm setting, system time etc.
- 3) You need to do DDNS setting and port forwarding in the router when you intent to visit the devices via WAN.

At first time use, please add IP camera in the devices list as Figure 2, click the icons below it to perform the functions for add, edit, delete and video play.

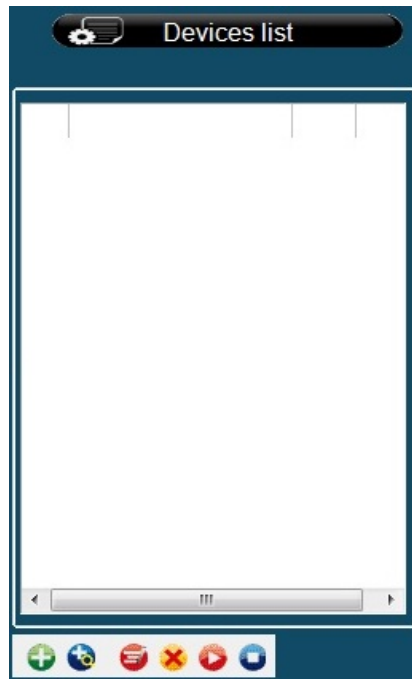



Figure 2: Devices list

## 4.1 Adding one device

Click  button in Figure 2, it will pop up a dialog box, and then you can enter corresponding information, example of figure 3, click 'save' button to finish adding device from LAN and WAN to this software, and also showed on the devices list.

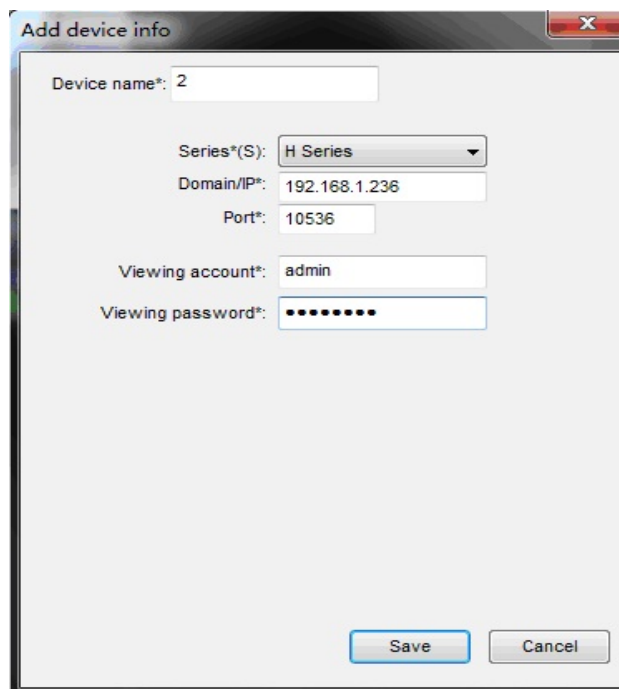



Figure 3: Adding a Device

- Device name must be unique in devices list (Don't change the device name

optionally after you entered, you will not add this device again otherwise).

- Choose the correct product series (**Required**) .
- The fields of 'Domain/IP', 'Port', 'Viewing Username', and 'Viewing Password' must be filled out correctly. The user can enter the corresponding information in web browser and check if connect the device. The user also can fill out domain of the device if it located in the WAN.

## 4.2 Searching and Adding Devices in LAN

Click  button to search and add the devices in LAN. In pop-up window, you can perform the steps as below.

- Select the product series and click “Search”, the found devices will be listed.
- Tick the checkbox on the device which want to be added, assign a name and set the viewing username and password, example of Figure 4.
- Click “OK”, then the device is put in the device list.

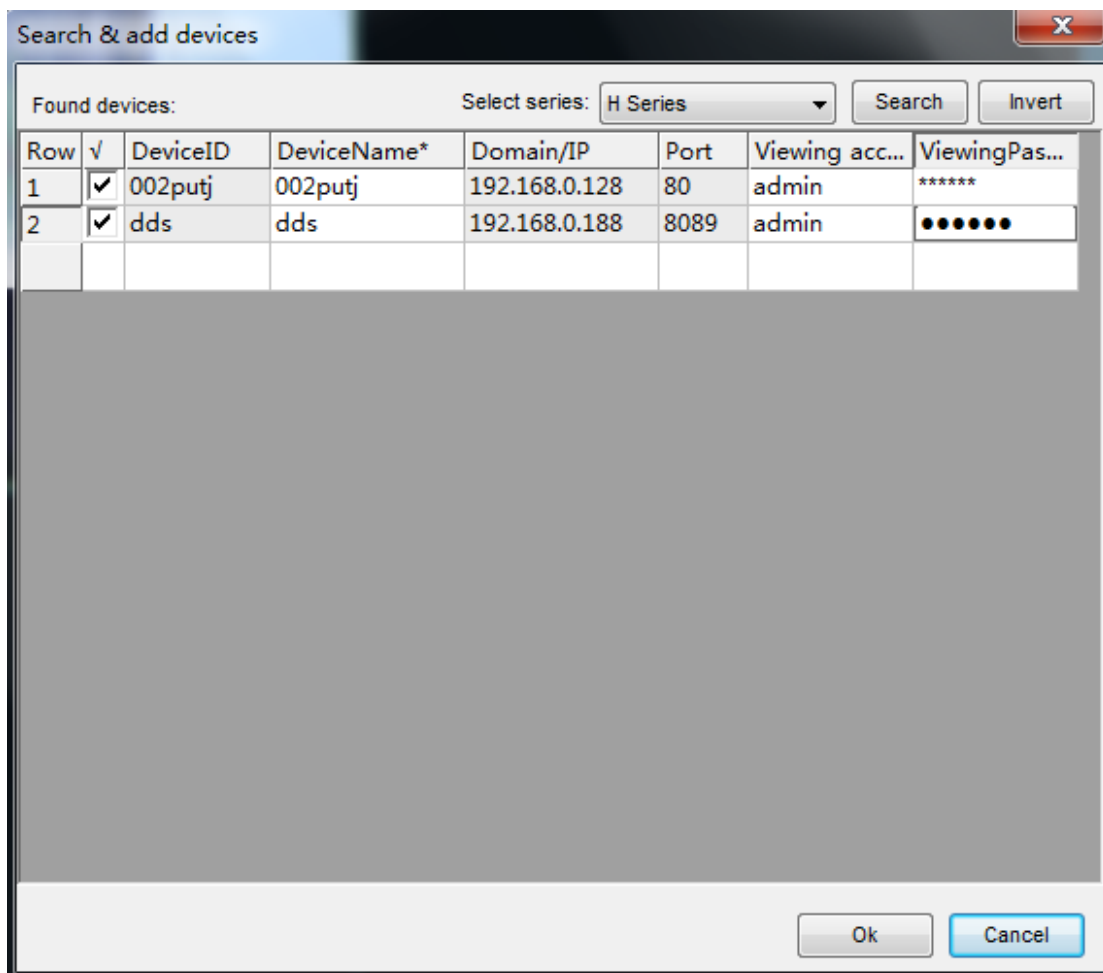



Figure 4: Search and add devices

### 4.3 Modifying Device information

- Select a device and then click  button to modify the information of the device, example of figure 3.
- Select a device and right click on it, will pop up a menu, you can select the modify device name to change device name.

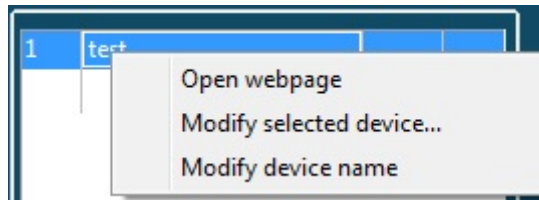







Figure 5: Modify device name

### 4.4 Deleting Device

Select a device and then click  button to delete the device. If need to delete several device simultaneously, you can use the Ctrl or Shift key and then click to select the devices from devices list and delete them.

### 4.5 Starting and stopping the Video

- Select a device, double click it or click  to start the video.
- Select a started device and click  button can stop it.
- Press  button in left bottom can start all devices simultaneously.
- Press  button in left bottom can stop all devices simultaneously.

## 5 Device setting

Click 'Device setting' button, will pop up a dialog, you can set up basic parameters at selecting window, example of figure 6.

Select a live video window and click 'get' button, you can get device parameters, and then you can set up these parameters and save them.

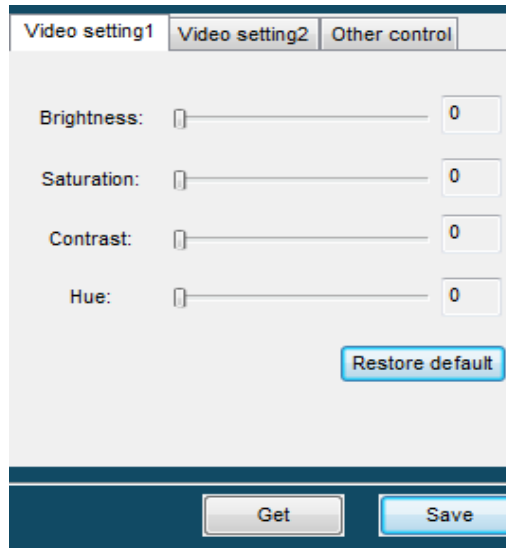


Figure 6 Device setting

Note: The device setting is different for different product series, and recommend not to setting parameters frequently.

## 6 PTZ Control

Click “PTZ control” button can spread PTZ control interface, like as figure 7.

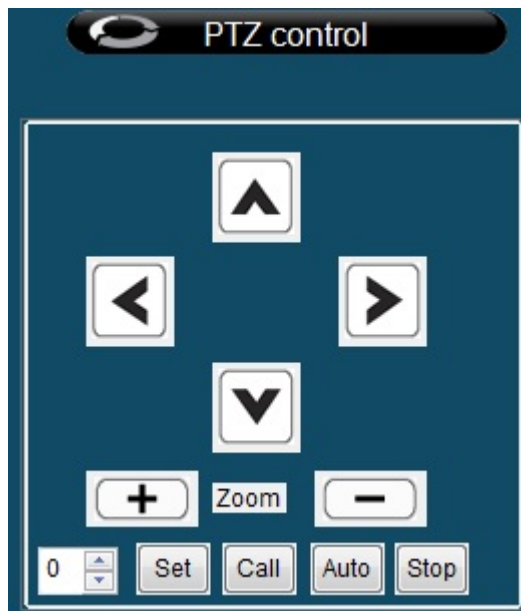


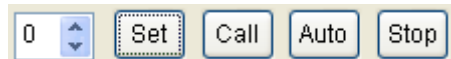


Figure 7 PTZ control

- 1) The Pan/Tilt can turn up, down, left, right by clicking on the arrows accordingly in the “PTZ Control” area. You also use keyboard to control Pan/Tilt, like as: ← → ↑ ↓;
- 2) For H Series IP Camera, like High Speed Dome, click   can control Zoom;



- 3) For High Speed Dome and H Series IP Camera with external PTZ, click the following buttons:




You will Set/Call the preset point; and click auto, the Pan/Tilt will cruise according to the preset point; and click stop, the Pan/Tilt will stop cruise.

## 7 Group Management

Click 'Group management', pop up group management list, you can add and edit group, and also play by group, play multiple group by cycle.

### 7.1 Set group

- Click  , pop up set group interface;
- Enter group name, click 'add' button, it displays the name in the group list;
- Select group name in the group list, and then tick the devices wanted to add the group in device list;
- Set the cycle time interval for each group.

If need to edit group, also add , set group interface as figure 8.

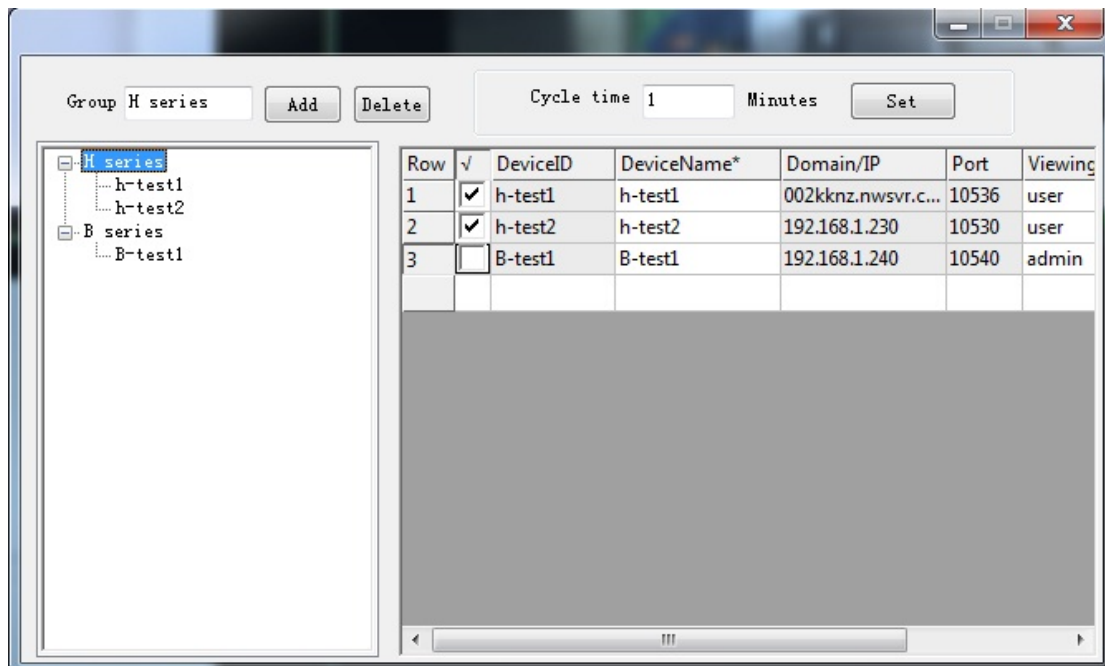





Figure 8 Set Group

## 7.2 Play by group

- Select a group in group list, double click and then play all device in this group;
- Don't select some group, click  button, it play each group by cycle;
- Don't select some group, click  button, it stop to play all groups.

## 8 Schedule Record

Click 'Schedule record' can manage the scheduled recording for the devices.

- 1) Click , pop up set plan dialog as figure 9;

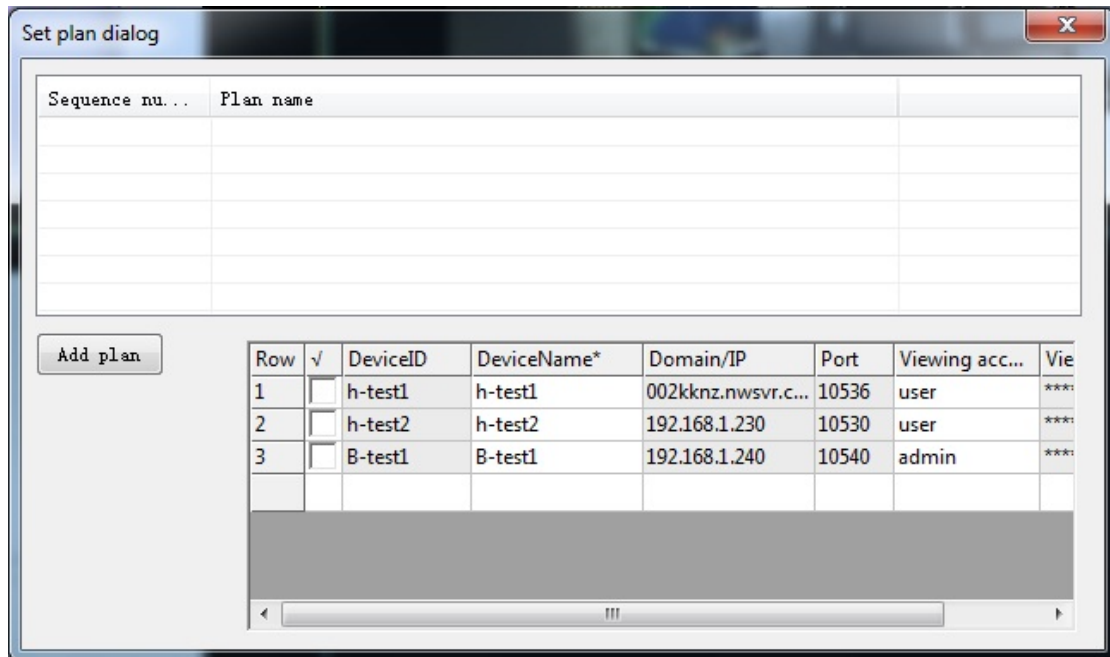



Figure 9 Set plan dialog

- 2) Click 'add plan', pop up 'add plan' dialog, you can set plan name, and then click  button can add the duration of record as figure 10,click 'save' button to save them.

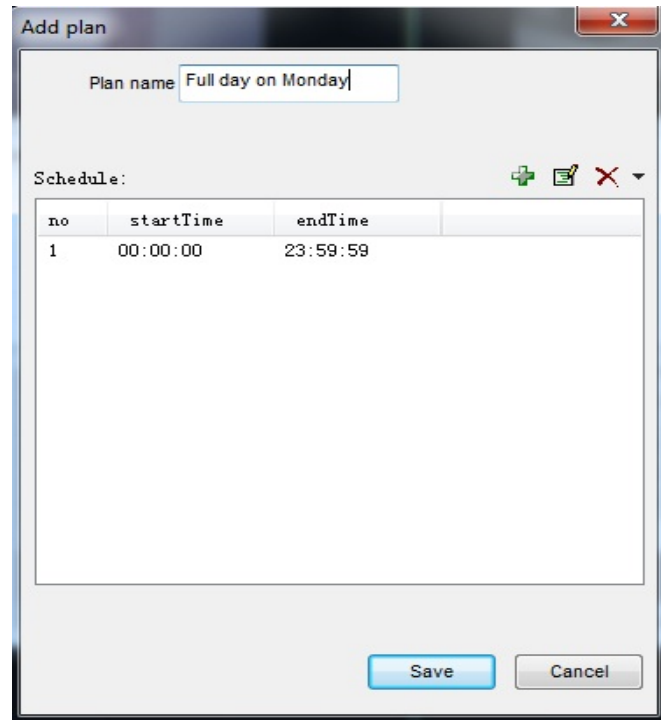


Figure 10 Add plan

- 3) Selected plan name, and then tick the device in device list, so the device can be added to the recording plan, the device will record according to the plan, example of figure 11.

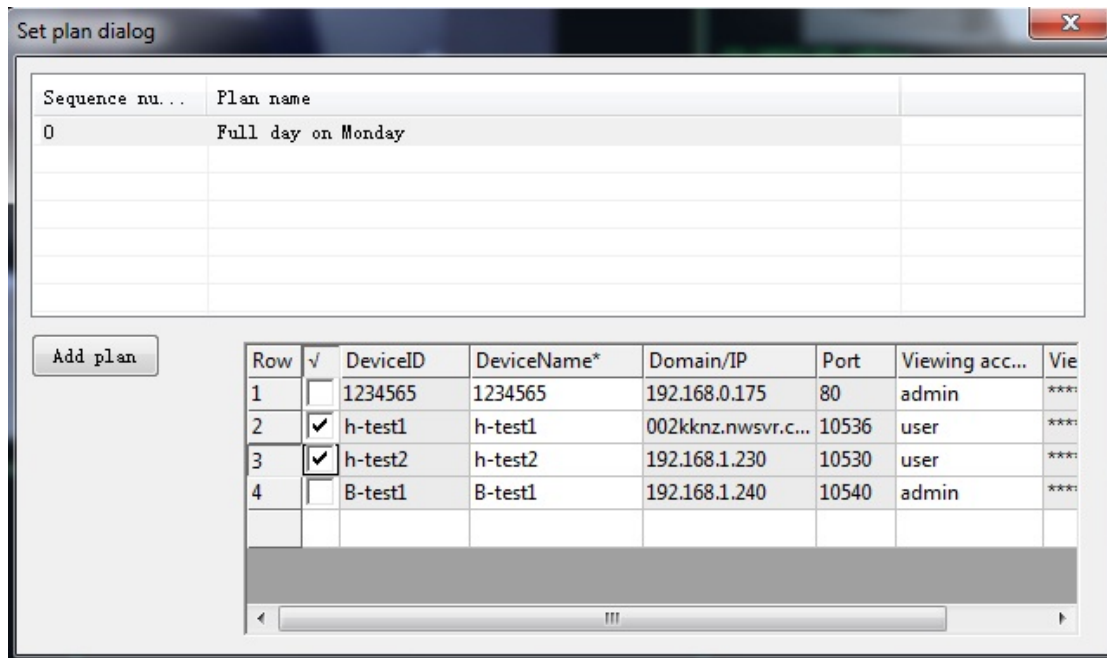




Figure 11 Set plan dialog

- 4) Select a plan name and click  button can change the recording plan parameters;
- 5) Select a plan name and click  button can delete the recording plan.

## 9 Alarm setting

Click 'Alarm settings' can manage alarm of device by the software.

- 1) Click button, pop up a alarm setting dialog as figure 12.

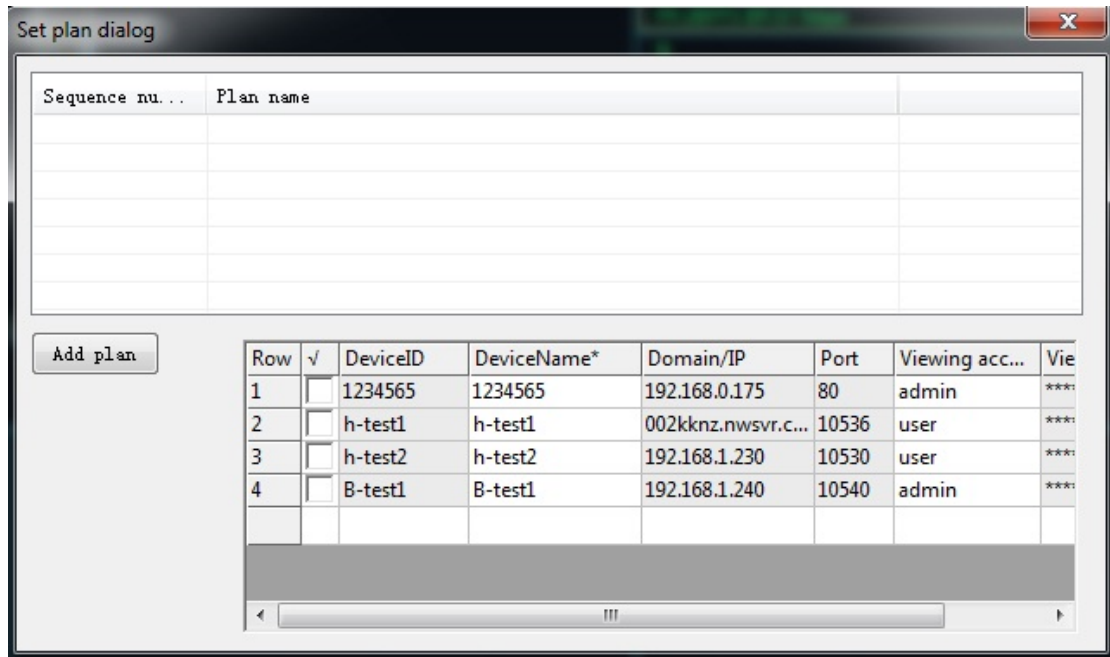


Figure 12 Alarm plan Setting

- 2) Click 'add plan', pop up a dialog, you can edit the plan, example of figure 13.

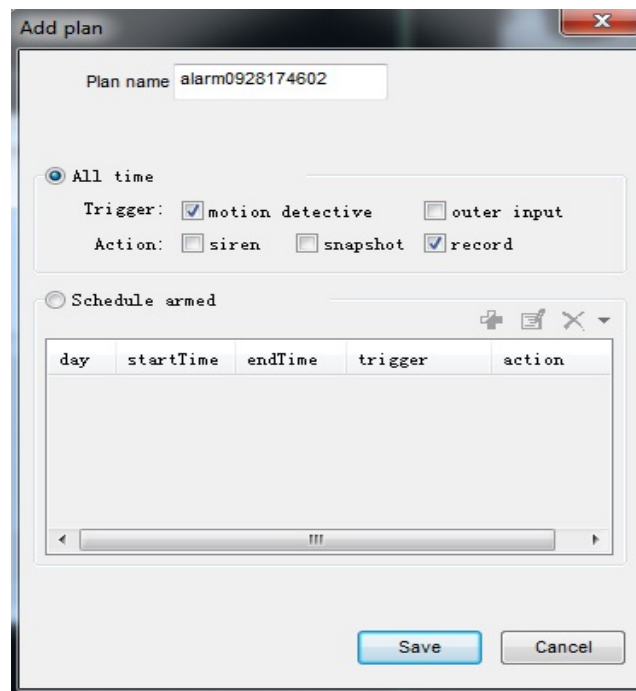


Figure 13 Add plan

- 3) Selected plan name, and then tick the devices wanted to add to the plan, so the devices will alarm by plan, example of figure 14;

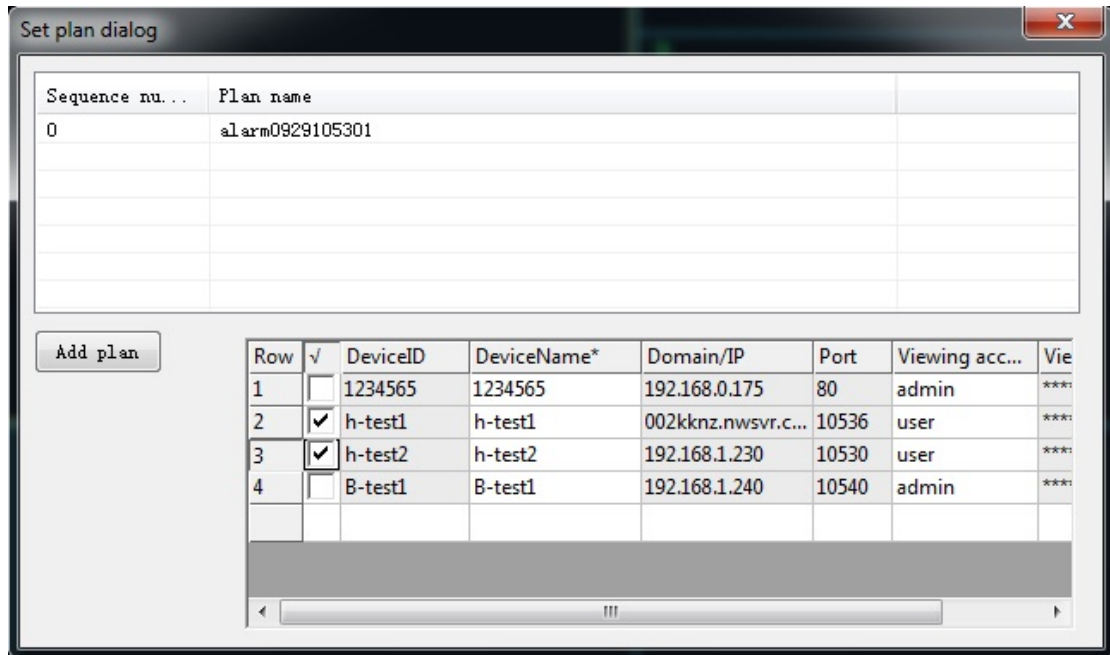




Figure 14

- 4) Select a plan in alarm setting list and click  can edit the plan and reset alarm mode;
- 5) Select a plan in alarm setting list and click  button can delete the plan.

**Note: Before alarm setting, please make sure the ip camera's configuration is correct and it could detect the alarm. (refer to the ip camera user manual)**

## 10 System Setting

Click  button can set some parameters for the software, example of Figure 15.

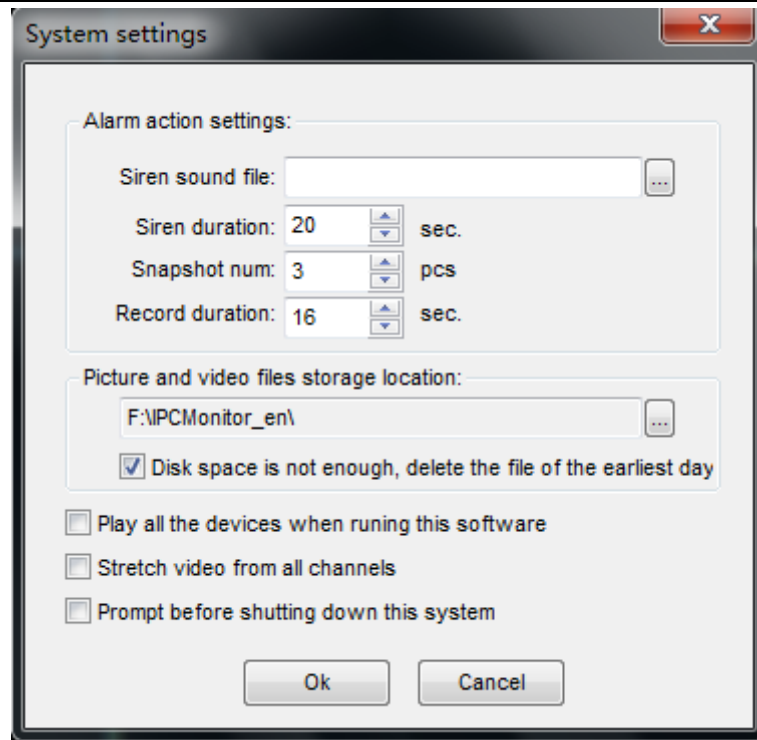




Figure 15 System Setting

Following are some introductions for this window:

- 1) Alarm action settings:
  - User can select other sound file (.wav) as siren sound. The default sound will be used in case this field is blank.
  - Users can also configure the parameters for Siren Duration, Snapshot Number, and Record Duration.
- 2) Storage location:

User can set the snap and video files storage location, the default location is located in installation directory if not set. Snap and videos will be stored in ./snap, and ./record directory.
- 3) If tick “Disk space is not enough, delete the file of the earliest day”, it will automatically delete the earliest day's data and then realize cycle recording when the disk space is less than 1GB. If not ticked, it will stop recording when the disk space is less than 500MB. For setting the storage location, click  button and pop up a dialog, you can set one or several recording location.
- 4) The other options can be set if you ticked:
  - Play all the devices when running this software or not;
  - Stretch video from all channels or not;
  - Prompt before shutting down this system or not.

## 11 Recording playback

Click  button, open the record player, you can enter the main location stored video file, and also view corresponding video file by device name, the interface as Figure 16.

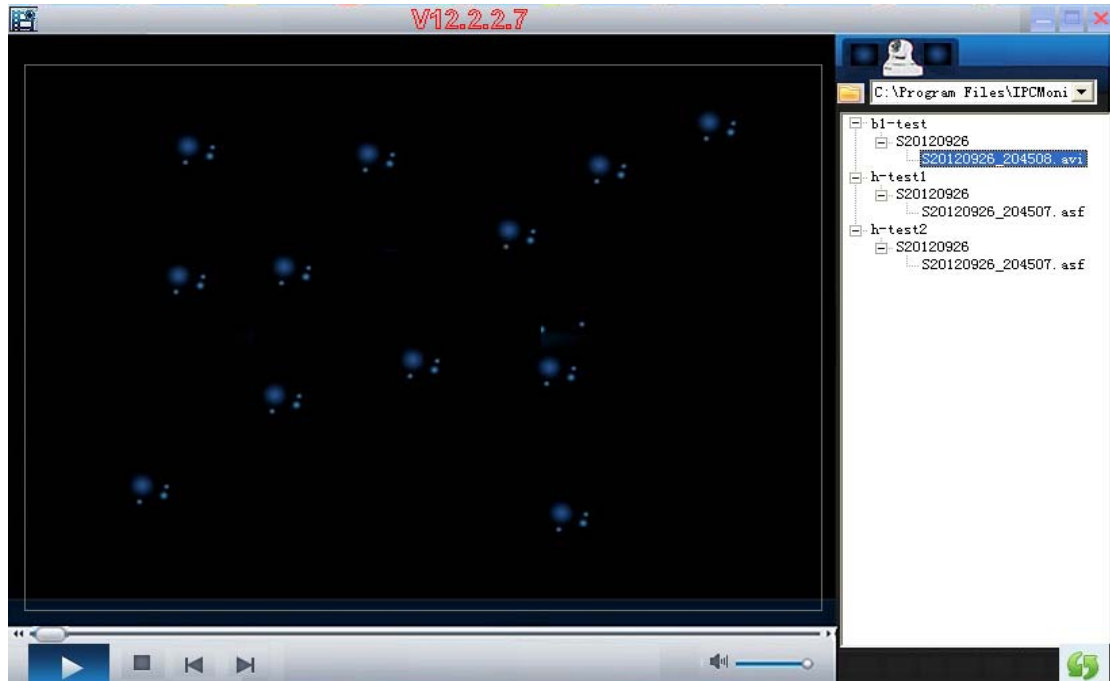



Figure 16 Recording playback

## 12 Manage NVR

Click  button can launch the NVR player, for the detail information, please see the NVR user manual by manufacturer.

## 13 Other operation and introduction

### 13.1 Basic video operation

- Double click on a channel will stretch the video to full screen. And double click it again, the video will shrink back to its original size.
- Click and hold a channel can drag and drop it to another channel, in case the target

channel is utilized, the two video channels will be swapped.

- Click mouse right key on a channel, user can perform some operations like stop video, stretch, etc from the pop-up menu.
- Click the icons in the status bar for each channel, you can snapshot or record manually. Due to different functions, every series product has its own icon content. It display alarm icon when the device detected alarm; the button at right will become red when recording.



Figure 17 Channel Status Bar

Note: User can only talk and monitor the sound from the device at current channel. The talk icon is disabled if another user is talking.

## 13.2 Other introductions for device list


- The device name become green when it is playing;
- It display alarm icon  in device list when the device is alarming, example of Figure 18;



Figure 18 Device list

- Double click on alarm icon, will display alarm log of the device, example of Figure 19.

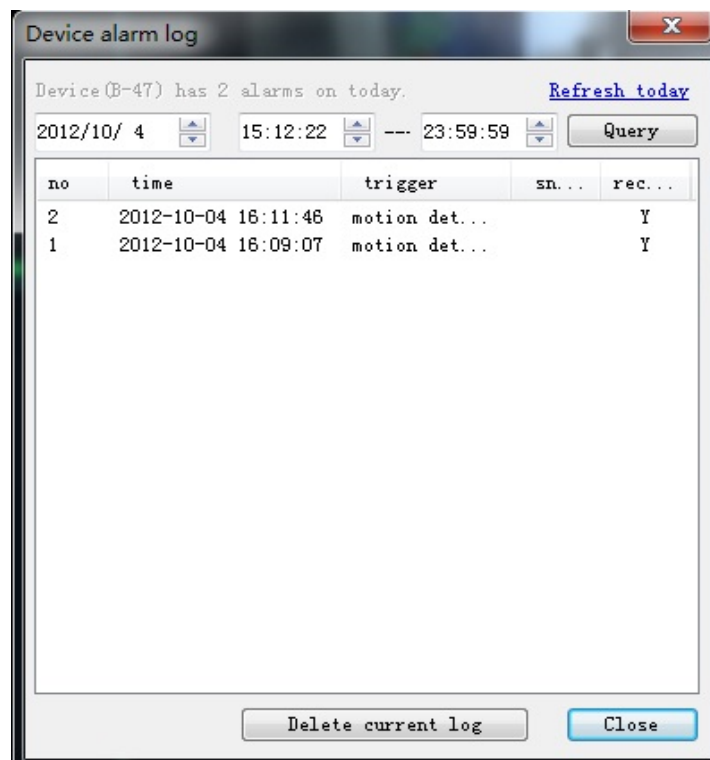


Figure 19 Alarm log



## 13.3 Recording strategy

- The software supports three recording, alarm recording, schedule recording and manual recording;
  - It indicates the device is recording when the recording status button become red;
  - User can click recording status button to run recording manually when the button is green, the button become red when the device run recording; click it again, stop recording; The device will stop recording after 1 hour if forgetting to stop recording manually;
  - The device will run scheduled recording when scheduled recording and alarm recording were triggered in same time duration;
- The file name of alarm recording, manual recording and scheduled recording will be named for A, M, S as prefix respectively, the start time stamp will be fill up the other parts and end up with .avi (H series products' suffix is .asf);
- It creates automatically a new recording file each 1 hour at scheduled recording.

## 14 Notifications

- 1) Ensure that settings of the device are correct and can be access by web browsers.
- 2) Need administrator account to install the software in vista and windows 7 or above;
- 3) When performing centralization monitoring, if the running speed is slow and the software is unstable, please open Windows Task Manager and check the percentage of CPU usage, if it take more than 80%, maybe the CPU performance is not enough, so the user can decrease resolution, or reduce monitoring devices.
- 4) Try to close the anti-virus software if the user can't open the interface of video playback and NVR management.