

## LED Flood Light – Installation Manual

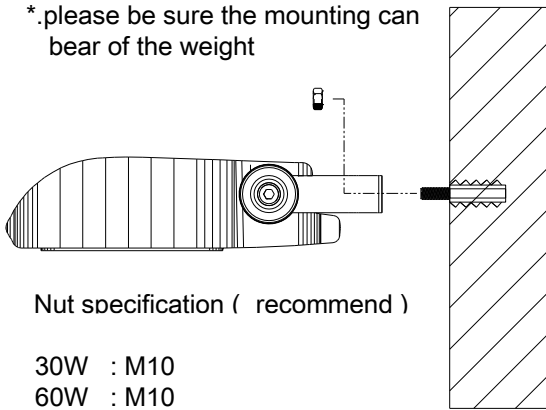
FLDA1

### ※ Installation Cautions:

1. The luminaire can only be installed by the trained.
2. Mind the weight withstanding of the object to secure the luminaire.
3. Mind the installation location, materials, and the strong wind.
4. Mind electric shock during raining or working in humid environments.
5. The luminaire can only be installed when the power is off.
6. The luminaire can only be opened or disassembled by the trained.

### ① Install the luminaire on to a wall.

\*.please be sure the mounting can bear of the weight

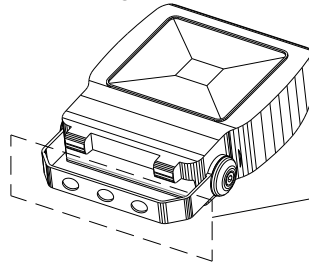


Nut specification ( recommend )

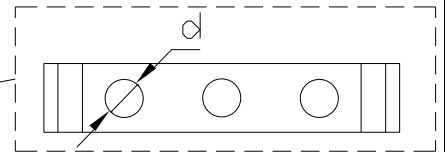
30W : M10  
60W : M10

Product weight

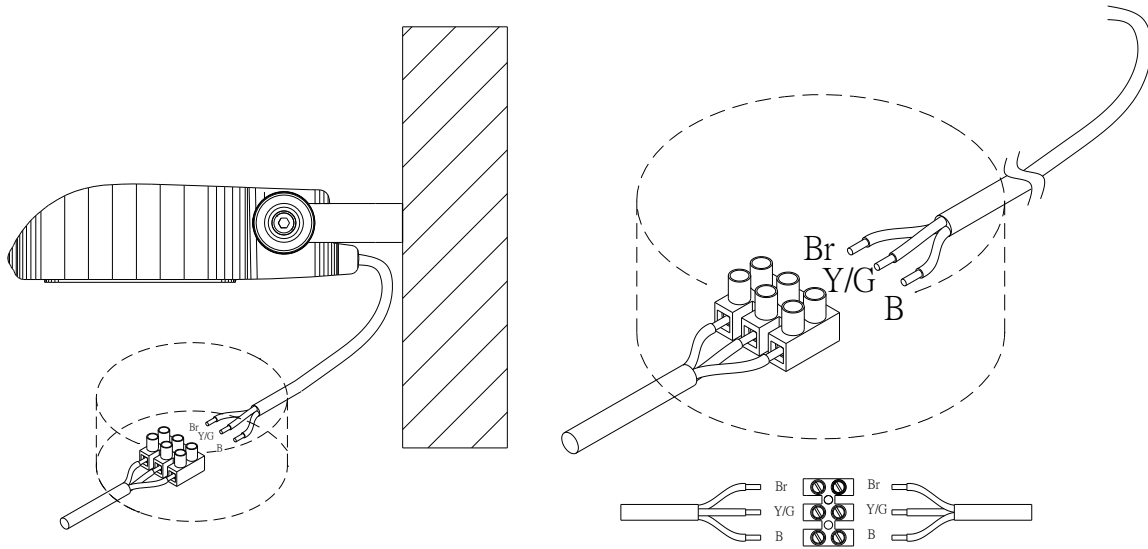
30W 2.8kg  
60W 5.2kg  
80W 5.2kg



30W	d=10.8mm
60W	d=10.8mm
80W	d=10.8mm

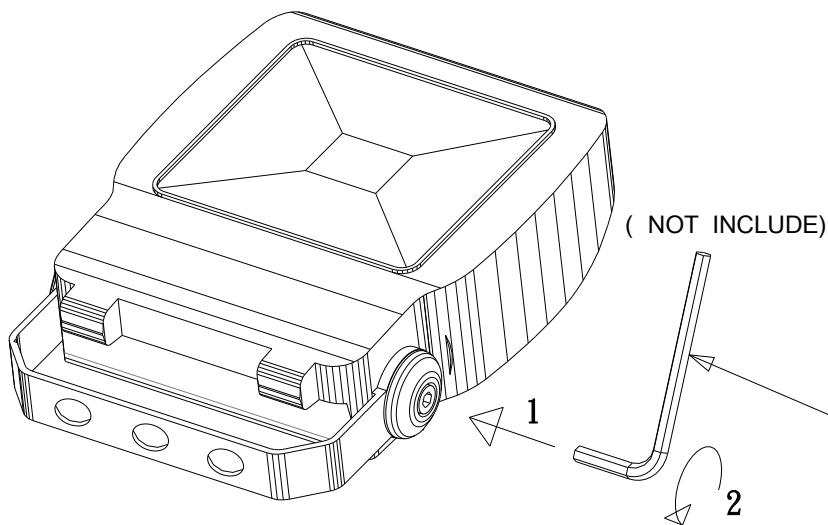


**2** Using a waterproof switch box to connect AC wires.



Waterproof box = IP 65( Recommend )

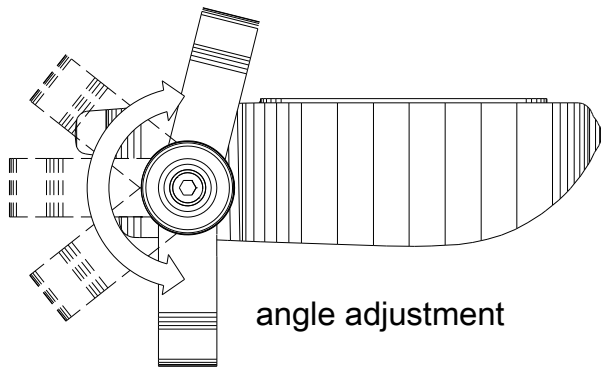
**3** Loosen the mounting rack by unscrewing the screws counterclockwise.



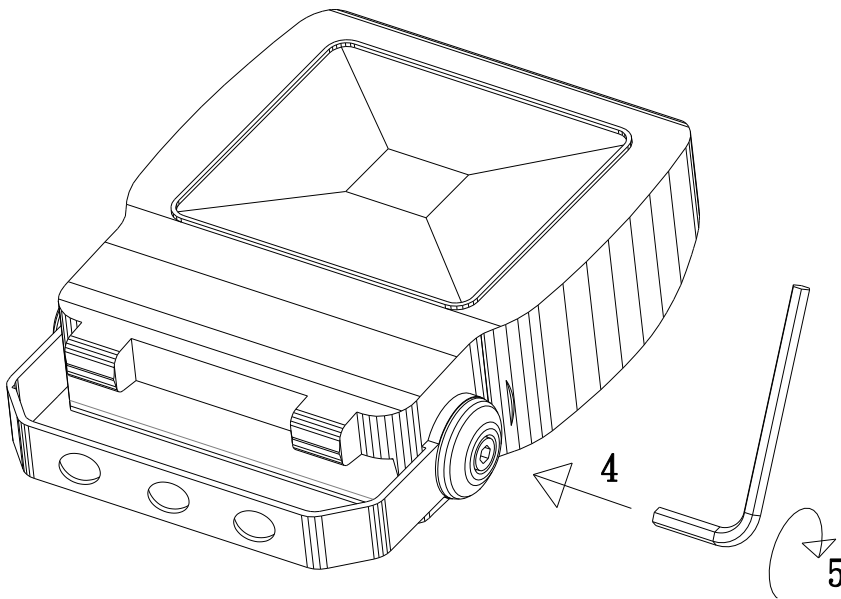
Tools specification

30W	6mm
60W	6mm
80W	6mm

**4** Rotate the luninaire to the angle in need.



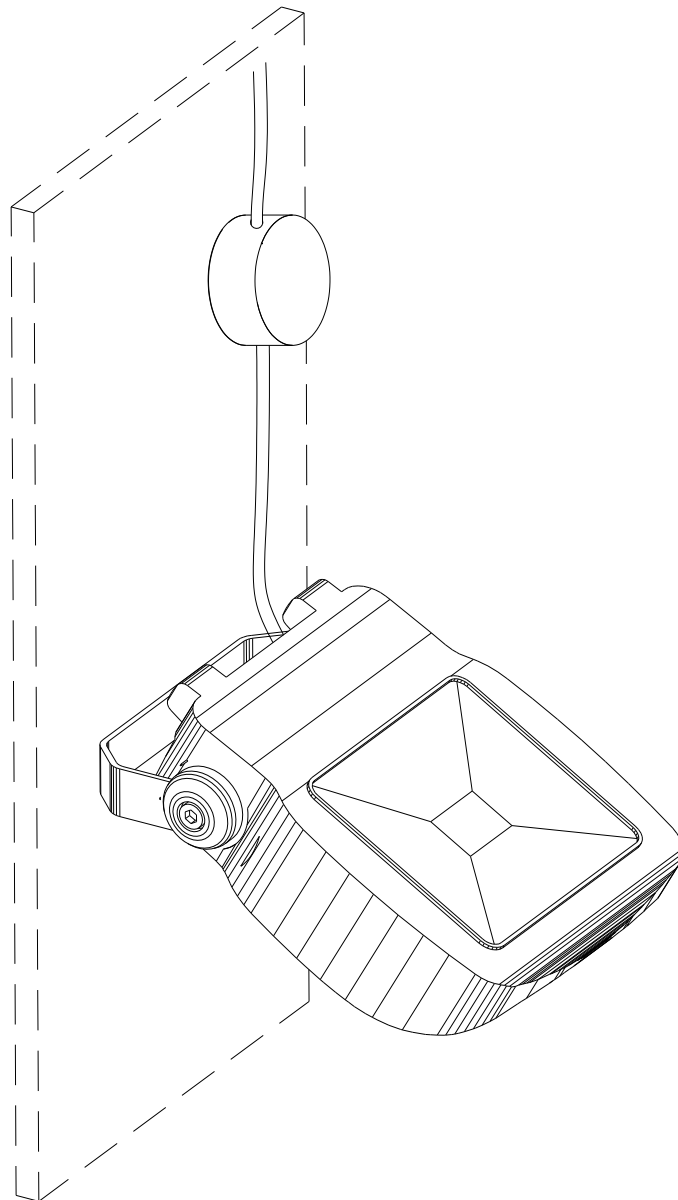
**5** Tighten the mounting rack by screwing the screws clockwise.



Attaching torque

30W	0.65kgf-m
60W	0.75kgf-m
80W	0.75kgf-m

## 6 Completion



### ⚠ Cautions

1. Make sure no short circuits and cable exposure after installation.
2. Turn the luminaire off and call for repairs when it is not working powered on.
3. Turn the luminaire off and call for repairs when it smokes or sparks.

