



# Installation Manual

## EMERGENCY EXIT BUTTON

### AST-EBG-Z

### AST

VERSION 1.1



AAT Holding sp. z o.o.

ul. Puławska 431, 02-801 Warszawa, tel. 022 546 05 46, fax 022 546 05 01  
www.aat.pl

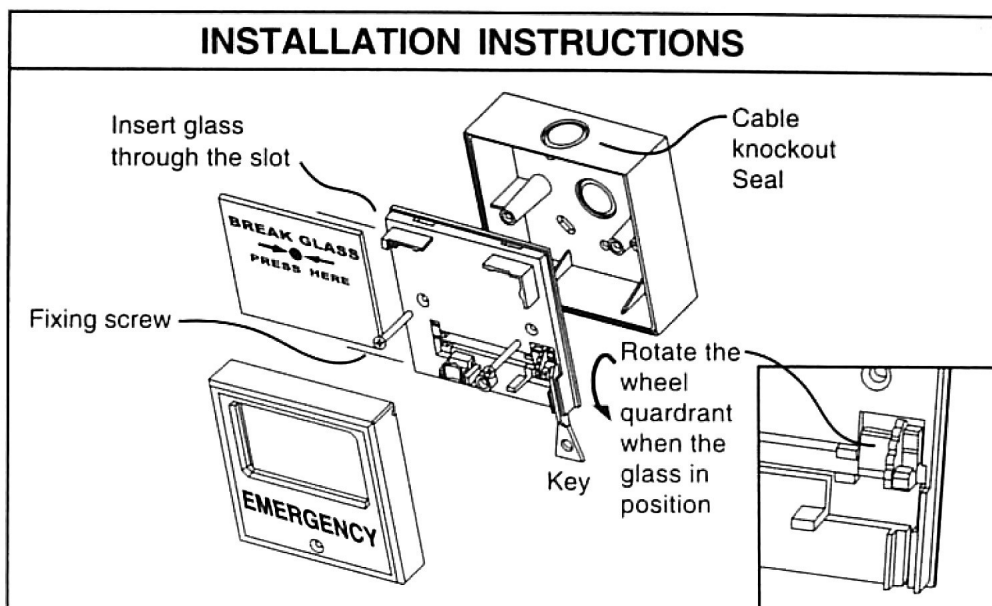
## Emergency exit button AST-EBG-Z

The AST-EBG-Z emergency exit button was designed for use in access control systems. It has a backlit key and two pairs of contacts NO / NC. It has a modern, attractive appearance and easy to install. The robust mechanical design ensures reliable operation.

### FEATURES

- For mounting on the wall
- Terminals NO / NC
- Contact rating: 250VAC 10A, 12/24VDC 10A, 48VDC 3A
- Dimension: 87 mm x 87 mm x 52 mm





**MODEL : AST-EBG-Z**

**SURFACE FIXING**

SURFACE wiring-fix box over flat surface. Secure by tightening two screws evenly down to prevent distortion.

**CONCEAL FIXING**

Lower box into wall with front edge level or slightly below wall surface.

**CONDUIT HOLES**

Cable knockout seal for cable entries 20mm (3/4") are provided on top and bottom.

**TESTING**

Insert and push in the key that provided ( refer to drawing) remove for reset.

**NORMAL OPERATING METHOD**

The system is operated by pressing hard to the glass. A protective label on the glass prevents operator injury.

**MAINS SYSTEM**

Affix voltage warning label to each unit.

**RATING**

250V AC 10A

12/24V DC 10A

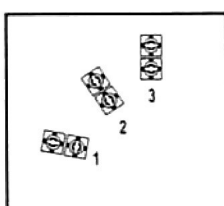
48V DC 3A

**WIRING**

Do not connect TWO CORES WITH ONE TERMINAL SCREW.

ALWAYS USE ONE SCREW FOR \*IN\* AND ONE FOR \*OUT\* TO ENSURE GOOD CONTINUITY.

**CONNECTION INSTRUCTION**



1 and 3 - open circuit system

2 and 3 - close circuit system

AAT Holding sp. z o.o.

ul. Puławska 431, 02-801 Warszawa  
tel. 22 546 05 46, faks 22 546 05 01  
e-mail: [aat.warszawa@aat.pl](mailto:aat.warszawa@aat.pl), [www.aat.pl](http://www.aat.pl)



Warszawa