



File Name:	MEITRACK Parameter Editor	Creator:	Cavana Cheung
Project:	GT30i/GT60 VT300/VT310/VT400	Creation Date:	2010-10-28
		Update:	2011-108-01
Sub Project:	Parameter Editor User Guide	Page:	1 of 9
Revision:	V2.02	Confidential:	External Documentation

MEITRACK® Parameter Editor

User Guide



File Name:	MEITRACK Parameter Editor	Creator:	Cavana Cheung
Project:	GT30i/GT60 VT300/VT310/VT400	Creation Date:	2010-10-28
		Update:	2011-108-01
Sub Project:	Parameter Editor User Guide	Page:	2 of 9
Revision:	V2.02	Confidential:	External Documentation

Contents

1.	Introduction	3
2.	Hardware and Software Required	3
3.	Installation and Connection	3
4.	Configuration	4
	Tap I: GPRS Tracking	5
	Tap II: SMS Tracking	5
	Tap III: Main Settings.....	6
	Tap IV: Authorization.....	7
	Tap V: SMS Header	8
	Tap VI: Extended Settings.....	8

File Name:	MEITRACK Parameter Editor	Creator:	Cavana Cheung
Project:	GT30i/GT60 VT300/VT310/VT400	Creation Date:	2010-10-28
Sub Project:	Parameter Editor User Guide	Update:	2011-108-01
Revision:	V2.02	Page:	3 of 9
		Confidential:	External Documentation

1. Introduction

This guide will show you how to configure MEITRACK'S GPS Tracker GT30i, GT60, VT300, VT310 and VT400 using MEITRACK Parameter Editor.

2. Hardware and Software Required

- A personal computer or laptop with Windows XP, Windows Vista, or Windows 7;
- One USB Data Cable;



- Driver for USB Data Cable;
- MEITRACK Parameter Editor.

3. Installation and Connection

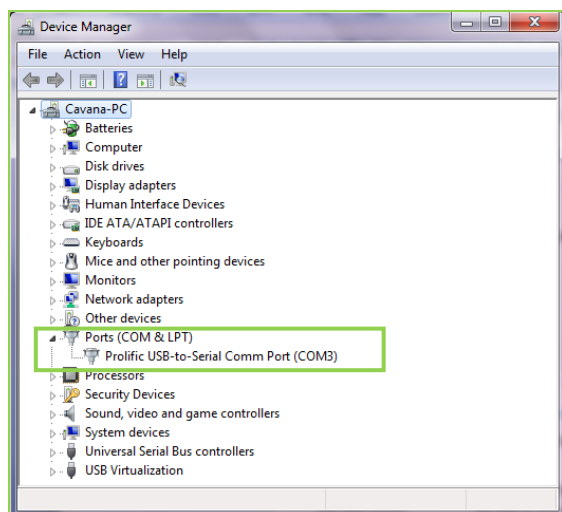
Run 'PL2303_Prolific_DriverInstaller' to install the driver for the USB data cable.

Note: PL2303_Prolific_DriverInstaller is in the folder 'USB-232 Driver' in the CD.

Connect the USB data cable with your computer.



Open Device Manager (Device Manager is under Control Panel\System and Security\System). You can then find 'Prolific USB-to-Serial Comm Port' as the following picture shows.



File Name:	MEITRACK Parameter Editor	Creator:	Cavana Cheung
Project:	GT30i/GT60 VT300/VT310/VT400	Creation Date:	2010-10-28
Sub Project:	Parameter Editor User Guide	Update:	2011-108-01
Revision:	V2.02	Page:	4 of 9
		Confidential:	External Documentation

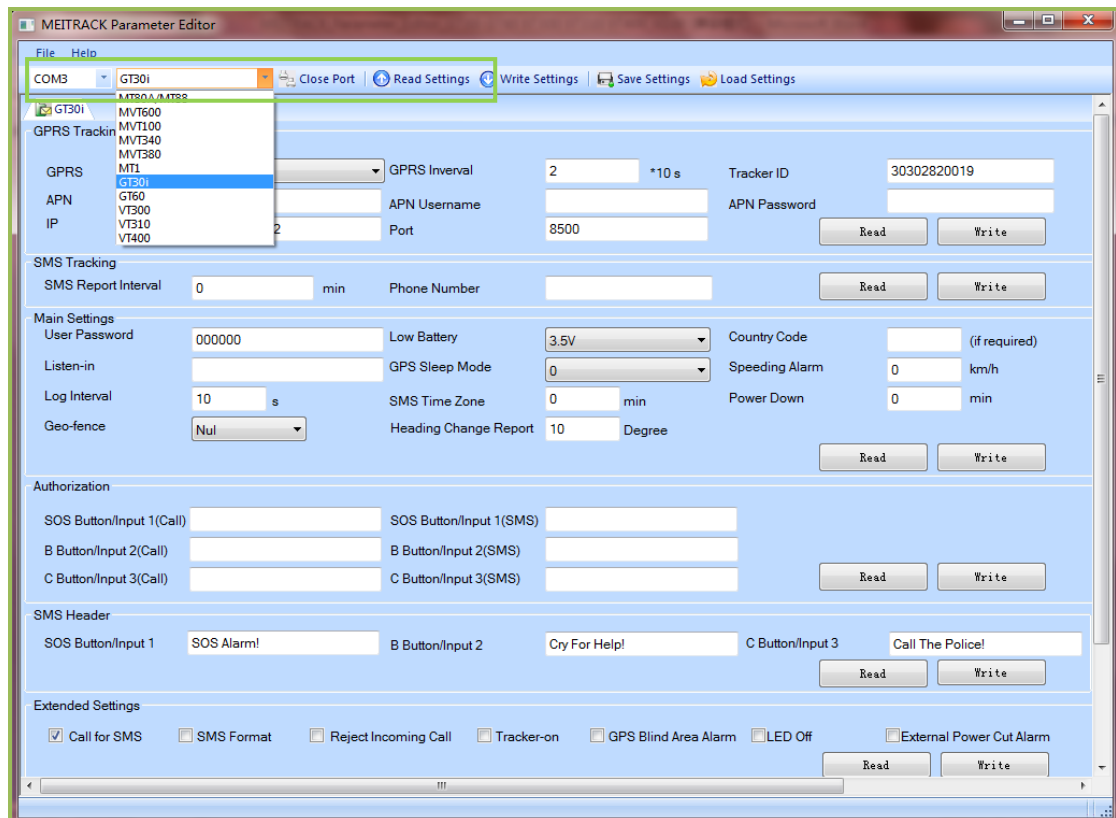
Note: Remember this Com number. It needs to be input in MEITRACK Parameter Editor. It is COM3 in this example and it would be COM4 or COM5...in your computer.

4. Configuration

Connect the tracker to your computer by the USB data cable as below picture shows:



Run 'MEITRACK Parameter Editor.exe' and the following configuration window will be opened:



Select the correct Com number according to the Device Manager and select tracker's model. And then click the 'Open Port' button.

Note: MEITRACK Parameter Editor is in the CD. The language will be automatically adjusted to be the same as your PC operation system's language. Please use "Ctrl+L" to change the language.

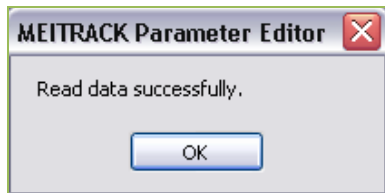
After the tracker is properly connected with USB Data Cable, press and hold tracker's SOS Button (Note: For VT300, VT310 and VT400, SOS button is connected with the I/O cables. If there is no SOS button available, connect the white cable [Input1] and black cable [GND] directly) and then

File Name:	MEITRACK Parameter Editor	Creator:	Cavana Cheung
Project:	GT30i/GT60 VT300/VT310/VT400	Creation Date:	2010-10-28
Sub Project:	Parameter Editor User Guide	Update:	2011-108-01
Revision:	V2.02	Page:	5 of 9
		Confidential:	External Documentation

turn on the tracker. All LEDs will be on. Now the tracker is ready for configuration.



Click 'Read Settings' button to show the default or previous settings of the tracker and the following window will pop up:



Tap I: GPRS Tracking

GPRS Tracking						
GPRS	TCP	GPRS Interval	2	*10 s	Tracker ID	30302820019
APN	cmnet	APN Username			APN Password	
IP	125.91.12.222	Port	8500		Read	Write

Item	Description
GPRS	Select TCP/UDP to enable GPRS communication
GPRS Interval	Track by time interval via GPRS. Set time interval for GPRS tracking. Interval is in unit of 10 seconds. Interval = 0, stop tracking by time interval. Max time interval = 65535*10 seconds
Tracker ID	Set GPRS ID for the tracker. For example: 40402110491
APN APN Username APN Password	APN, APN username, APN password: max 32 bytes; If no username and password required, leave them blank. 'cmnet' is the APN of China Mobile.
IP & Port	Input server's IP address and port number.
Read	Read current tracker's settings for above items.
Write	Write above settings to the tracker.

Tap II: SMS Tracking

SMS Tracking						
SMS Report Interval	10	min	Phone Number	13800138000	Read	Write

File Name:	MEITRACK Parameter Editor	Creator:	Cavana Cheung
Project:	GT30i/GT60 VT300/VT310/VT400	Creation Date:	2010-10-28
Sub Project:	Parameter Editor User Guide	Update:	2011-108-01
Revision:	V2.02	Page:	6 of 9
		Confidential:	External Documentation

Item	Description
SMS Report Interval	Track by time interval via SMS. Set time interval for SMS location report. = 0, stop tracking by time interval (default); = [1,65535], track by interval in minute;
Phone Number	A phone number to receive SMS location reports.
Read	Read current tracker's settings for above items
Write	Write above settings to the tracker.

Tap III: Main Settings

Main Settings			
User Password	<input type="text" value="000000"/>	Low Battery	<input type="text" value="Nul"/>
Listen-in	<input type="text"/>	GPS Sleep Mode	<input type="text" value="0"/>
Log Interval	<input type="text" value="0"/> s	SMS Time Zone	<input type="text" value="0"/> min
Geo-fence	<input type="text" value="Nul"/>	Heading Change Report	<input type="text" value="0"/> Degree
Country Code	<input type="text"/>	Speeding Alarm	<input type="text" value="0"/> km/h
	(if required)	Power Down	<input type="text" value="0"/> min
		<input type="button" value="Read"/> <input type="button" value="Write"/>	

Item	Description
User Password	SMS password for sending SMS commands and defaulted as 000000.
Low Battery	Set low battery alarm.
Country Code	Be advised caution in this setting. Normally, your country code (for example in China it is +86) will be automatically added and displayed prior to a phone number when sending SMS. In this case, you should leave this column blank. If the country code is not added you are required to input the country code here, for example, +86.
Listen-in	Authorize a phone number for listen-in (voice monitoring). (only applicable to GT30i and GT60)
GPS Sleep Mode	Set sleep mode for tracker's GPS module <i>Note: Here is some explanation for the sleep mode. Assume that the GPS acquisition time is ONE minute.</i> <i>Level 1:</i> <i>The GPS module will be working for the first three minutes (i.e. 3 times of acquisition time) and then shut down for ONE minute (i.e. equivalent to acquisition time), and then work again for another three minutes.....</i> <i>Level 2:</i> <i>The GPS module will be working for the first two minutes (i.e. twice of acquisition time) and then shut down for ONE minute (i.e. equivalent to acquisition time), and then work again for another two minutes.....</i>
Speeding Alarm	= 0, cancel speeding alarm (default) = [1,255], set speed limit in Km/h

File Name:	MEITRACK Parameter Editor	Creator:	Cavana Cheung
Project:	GT30i/GT60 VT300/VT310/VT400	Creation Date:	2010-10-28
Sub Project:	Parameter Editor User Guide	Update:	2011-108-01
Revision:	V2.02	Page:	7 of 9
		Confidential:	External Documentation

Log Interval	<p>Set the interval for storing GPS data into tracker's flash memory.</p> <p>= 0, turn off logging;</p> <p>= [1,65535], set logging interval in second.</p> <p><i>(only applicable to GT30i and VT310)</i></p>
SMS Time Zone	<p>Default time of the tracker is GMT. You can use this item to correct tracker to your local time for SMS report.</p> <p>= 0, GMT (default);</p> <p>= [-32768,32767], set time difference in minute to GMT.</p>
Power Down	<p>Set power down mode when the tracker is inactive (stationary) for a period of time.</p> <p>In Power Down mode, GPS stops working and GSM enters sleep mode. It stops sending out messages until it is activated by message, incoming calls, and movement or input changes.</p> <p>= 0, turn off power down mode</p> <p>= [1,255], turn on power down after a specified period of being inactive in minute.</p> <p><i>(only applicable to GT30i, GT60, VT310 and VT400)</i></p>
Geo-fence	<p>Nul: Cancel Geo-fence Alarm</p> <p>Out Alarm: Alarm when tracker exits from the predefined Geo-fence waypoint</p> <p>In Alarm: Alarm when tracker enters into the predefined Geo-fence waypoint</p>
Heading Change Report	<p>When the heading direction of the tracker changes over the preset degree, a message with location data will be sent back to the server by GPRS.</p> <p>= 0, cancel heading change report (default);</p> <p>= [1,359], set degree of direction change.</p>
Read	Read current tracker's settings for above items.
Write	Write above settings to the tracker.

Tap IV: Authorization

Authorization			
SOS Button/Input 1(Call)	<input type="text" value="13801380000"/>	SOS Button/Input 1(SMS)	<input type="text" value="13801380000"/>
B Button/Input 2(Call)	<input type="text"/>	B Button/Input 2(SMS)	<input type="text"/>
C Button/Input 3(Call)	<input type="text"/>	C Button/Input 3(SMS)	<input type="text"/>
			<input type="button" value="Read"/> <input type="button" value="Write"/>

Item	Description
SOS Button/Input1 (Call)	Authorize phone number(s) for receiving phone call or SMS report when the SOS button is pressed (input 1 is active)
SOS Button/Input1 (SMS)	
B Button/Input2 (Call)	Authorize phone number(s) for receiving phone call or SMS

File Name:	MEITRACK Parameter Editor	Creator:	Cavana Cheung
Project:	GT30i/GT60 VT300/VT310/VT400	Creation Date:	2010-10-28
Sub Project:	Parameter Editor User Guide	Update:	2011-108-01
Revision:	V2.02	Page:	8 of 9
		Confidential:	External Documentation

B Button/Input2 (SMS)	report when the B button is pressed (input 2 is active)
C Button/Input3 (Call) C Button/Input3 (SMS)	Authorize phone number(s) for receiving phone call or SMS report when C button is pressed (input 3 is active)
Read	Read current tracker's settings for above items.
Write	Write above settings to the tracker.

Tap V: SMS Header

SMS Header					
SOS Button/Input 1	SOS Alarm!	B Button/Input 2	Cry For Help!	C Button/Input 3	Call The Police!
					<input type="button" value="Read"/> <input type="button" value="Write"/>

Description: Set SMS header of each event to be shown in the beginning in the SMS.

For example, you can input 'SOS Alarm!' in the column of 'SOS/Input1', once the tracker's SOS button is pressed, an SMS with 'SOS Alarm!' will be received.

Read	Read current tracker's settings for above items.
Write	Write above settings to the tracker.

Tap VI: Extended Settings

Extended Settings	
<input checked="" type="checkbox"/> Call for SMS <input type="checkbox"/> SMS Format <input type="checkbox"/> Reject Incoming Call <input type="checkbox"/> Tracker-on <input type="checkbox"/> GPS Blind Area Alarm <input type="checkbox"/> LED Off <input type="checkbox"/> External Power Cut Alarm	<input type="button" value="Read"/> <input type="button" value="Write"/>

Item	Description(if the box is ticked)
Call for SMS	Blank: Close location report function when a call is made to the tracker; Checked: Open location report function to get SMS by calling the tracker
SMS Format	Blank: Analyze position SMS format to be read easily. For example: Latitude = 22 32 36.63N Longitude = 114 04 57.37E, Speed = 2.6854Km/h, 2008-12-24,01:50 Checked: Location SMS format is in NMEA 0183 Format. For example: \$GPRMC,072414.000,V,3114.3763,N,12131.3255,E,0.00,0.00,050 805,*00
Reject Incoming Call	Blank: The tracker does NOT automatically hang up when one call is incoming. Checked: The tracker hangs up after 4~5 rings of an incoming call
Tracker-on	Blank: The tracker does NOT send SMS alarm when it is turned on Checked: the tracker sends one SMS to the authorized phone number for SOS button when it is turned on.
GPS Blind Area Alarm	Blank: The tracker does NOT send SMS alarm when it enters/exits

File Name:	MEITRACK Parameter Editor	Creator:	Cavana Cheung
Project:	GT30i/GT60 VT300/VT310/VT400	Creation Date:	2010-10-28
Sub Project:	Parameter Editor User Guide	Update:	2011-108-01
Revision:	V2.02	Page:	9 of 9
		Confidential:	External Documentation

	<p>GPS blind area.</p> <p>Checked: The tracker sends one SMS alarm to the authorized phone number for SOS button when it enters/exits GPS blind area.</p>
LED Off	<p>Blank: The LED light(s) in normal flashing status when the tracker works</p> <p>Checked: Turn off the LED light(s) when the tracker is working.</p>
External Power Cut Alarm	<p>Blank: The tracker does NOT send SMS alarm when its external power supply is off or cut.</p> <p>Checked: Alarm when external power supply if off or cut.</p> <p><i>(only applicable to VT300, VT310 and VT400)</i></p>
Read	Read current tracker's settings for above items.
Write	Write above settings to the tracker.