



Index	Safety Precautions	Features	Installing	Device Driver	How to Use	Utilities	Storing/Cleaning	Troubleshooting	Specifica
-------	--------------------	----------	------------	---------------	------------	-----------	------------------	-----------------	-----------



Samsung's OMS (Optical Media Solution) Customer Support Website (<http://samsung-ODD.com>) offers the latest versions of firmware for ODD products, user instructions and product information.

Select Language
English



The Statement of Warranty

<http://samsung.com>
<http://samsung-ODD.com>



▶ Main Page

▶ Safety Precautions

- ▶ Safety Precautions
- ▶ During Installation
- ▶ During Operating
- ▶ Others
- ▶ RoHS & WEEE

▶ Features

- ▶ Exterior
- ▶ System Requirements
- ▶ Features

▶ Installing DVD Writer and Connecting Cables

- ▶ Installing Drive
- ▶ Connecting Cables

▶ Installing Device Driver and Confirming The Installation

- ▶ Firmware Update
- ▶ Confirming the Installation of Device Driver
- ▶ Installing the MS-DOS device driver

▶ How To Use The DVD Writer

- ▶ How to Use the Drive
- ▶ How to Use DVD±R/RW and Other Discs
- ▶ MAGIC SPEED

▶ Deleting Utilities

▶ Troubleshooting

- ▶ Troubleshooting
- ▶ Caution: Possible Errors

▶ Product Specifications





▶ Storing/Cleaning Drive and Disc


- ▶ Cleaning the Drive
- ▶ Storing the Disc
- ▶ Cleaning the Disc
- ▶ When the on/off Light Blinks



Important to read and understand at all times



 Warning	This symbol indicates explanations about extremely dangerous matters. If users ignore this symbol and handle the device the wrong way, serious injury or death could result.
 Caution	This symbol indicates explanations about dangerous matters. If users ignore this symbol and handle the device the wrong way, damage to home or property could result.
	Important to read and understand at all times
	Do not disassemble

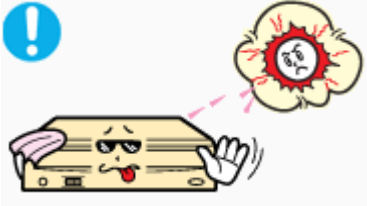
	Always make sure that the disc does not have a crack before use. If the disc has a crack (especially around the center hole), it is recommended to make a copy immediately and use the copy instead. When a cracked disc is used continuously, the size of the crack is likely to grow and this will eventually result in irreparable damage to the disc.
-------------------------------------------------------------------------------------	-----------------------------------------------------------------------------------------------------------------------------------------------------------------------------------------------------------------------------------------------------------------------------------------------------------------------------------------------------------



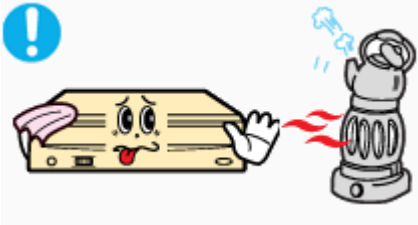
Installation



- ❖ Do not drop the drive, and protect it from severe shocks.
 - It can damage the drive or cause it to malfunction.



- ❖ Do not place the drive in direct sunlight.



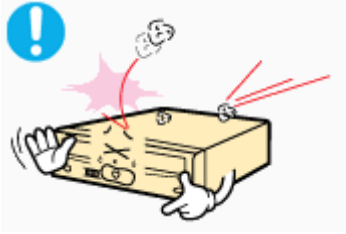
- ❖ Avoid low or high temperature environments.



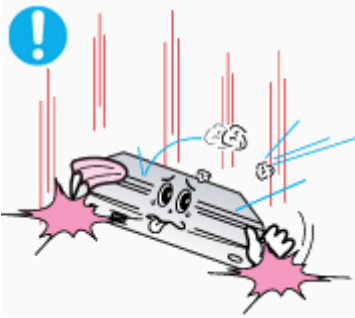
- ❖ Avoid high-humidity environments.



Operating



- ❖ Handle with caution to prevent damage from external shock.



- ❖ Do not drop the drive, and protect it from severe shocks.
 - It can damage the drive or cause it to malfunction.



- ❖ Do not move the drive while in operation and do not attempt to open the disc tray by force.
 - Make sure to close all working programs before attempting to open the tray and always use the open/close button.



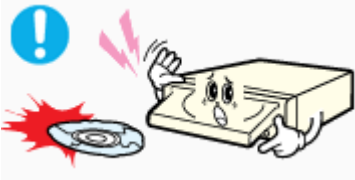
Caution



Caution

Do not insert a pin into the emergency opening while in operation.

Do not insert hands in the tray while in operation.
This may cause damage to the product or human body



- ❖ Do not use cracked, distorted or damaged discs.



Caution

In particular, a disc with a crack on the inner tracks may break while in use.

- Always check to be sure the disc is not cracked before use. If you find a crack on the disc (especially around the center hole), make a copy of the disc immediately and use the copy instead. Continued use of a cracked disc will cause the crack to become bigger, resulting in irreparable damage to the disc.

- Do not use low-quality discs (illegal, scratched, damaged, etc.).

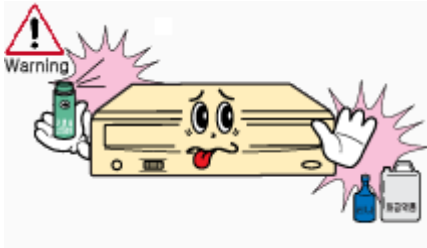
- **Samsung is not responsible for any loss resulting from the use of such discs.**



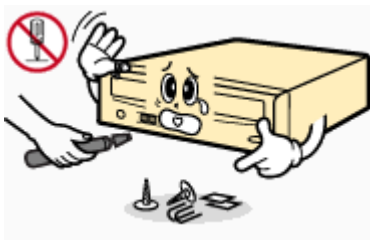
Others



- ❖ Never allow food particles or foreign substances to enter the drive casing.



- ❖ To protect against the risk of fire, do not spill such liquids as alcohol and benzene on the drive.



- ❖ Do not disassemble, attempt to repair or modify the device without express approval as directed in the manual.
- To reduce the risk of damage, electric shock, and fire.



RoHS



Samsung Eco-mark

The Samsung's own Eco mark helps consumers to easily understand that Samsung develops eco-friendly products. This mark represents Samsung's continuous effort to develop eco-friendly products.

RoHS (Restriction of the use of certain hazardous substances in electrical and electronic equipment) The RoHS, the environment regulation announced by European Union, restricts the use of lead, mercury, cadmium, hexavalent chromium, PBB, and PBDE in products put on the market in The European Union after July 1, 2006.

WEEE

Correct Disposal of This Product (Waste Electrical & Electronic Equipment)

(Applicable in the European Union and other European countries with separate collection systems)



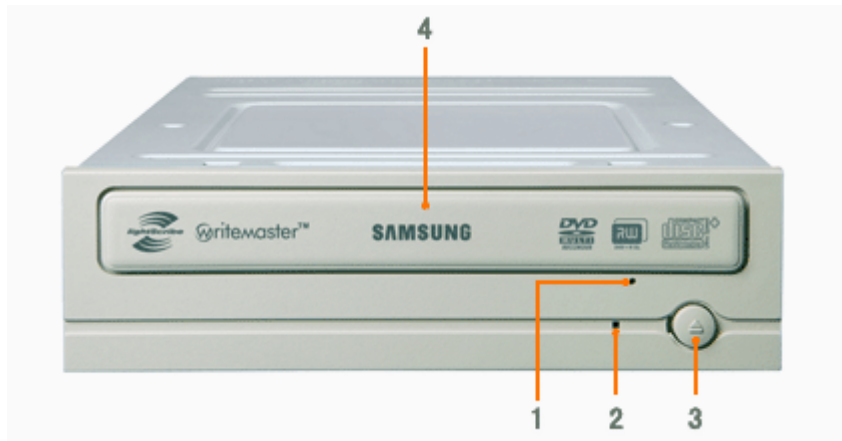
This marking shown on the product or its literature, indicates that it should not be disposed with other household wastes at the end of its working life. To prevent possible harm to the environment or human health from uncontrolled waste disposal, please separate this from other types of wastes and recycle it responsibly to promote the sustainable reuse of material resources.

Household users should contact either the retailer where they purchased this product, or their local government office, for details of where and how they can take this item for environmentally safe recycling.

Business users should contact their supplier and check the terms and conditions of the purchase contract. This product should not be mixed with other commercial wastes for disposal.



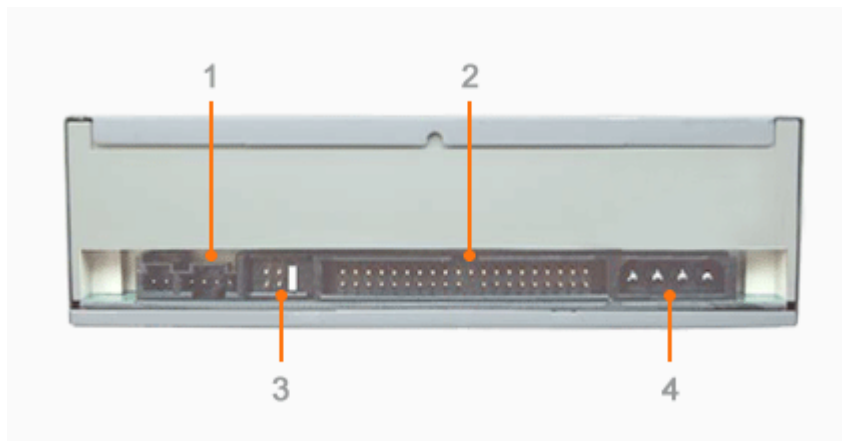
Front



- | | |
|----------------------|----------------|
| 1. Emergency Hole | 2. On/Off Lamp |
| 3. Open/Close Button | 4. Disc Tray |

- Design and specifications are subject to change without prior notice.

Back



- | | |
|--------------------------------|-------------------|
| 1. Sound Output Port | 2. Interface Port |
| 3. Master/Slave Selection Port | 4. Power Port |

Components

- ▶ DVD Writer
- ▶ 40-pin interface cable
- ▶ four screws to install the drive
- ▶ drive installation instruction sheets
- ▶ software programs
(Software: Nero Express 6, In CD 4, Nero Vision Express, Nero ShowTime, Nero BackItUp, Nero Recode)

- In case you need to return the purchased product, be sure to include all the accessories provided with the product to receive a refund.
- The type of accessories varies depending on product model.



System Requirements

You need to have an IBM-compatible PC with the following specifications.

Item	Description
OS	Microsoft Windows 98 SE/2000/Me/XP(SP 1.0 or higher)
CPU	Pentium3 800MHz or greater IBM-compatible PC (Recommendation: Pentium4 2.0GHz or higher)
RAM	256Mbytes or greater

Features

Versatile Multimedia Features

- ▶ DVD-R: Read / Write
- ▶ DVD+R: Read / Write
- ▶ DVD-ROM: Read
- ▶ DVD-R Dual: Read / Write
- ▶ CD-RW: Read / Write / Rewrite allowed
- ▶ DVD-RAM: Read / Write / Rewrite allowed
- ▶ DVD-RW: Read / Write / Rewrite allowed
- ▶ DVD+RW: Read / Write / Rewrite allowed
- ▶ DVD+R Dual: Read / Write
- ▶ CD-R: Read / Write
- ▶ Supports Read (playback) for various types of discs

See table below for details

	Disc Type	Writable	Rewritable	Read	Labeling
CD	CD-STAMP	x	x	O	x
	CD-R	O	x	O	x
	CD-RW	(O)	O	O	x
	Light Scribe Media	O	x	O	O
DVD	DVD-STAMP	x	x	O	x
	DVD-R For General Ver 2.1	O	x	O	x
	DVD-RW Ver 1.1	(O)	O	O	x
	DVD+R(Dual) Basic Ver 1.11	O	x	O	x
	DVD-R(Dual)	O	x	O	x
	DVD+RW Basic Ver 1.2	(O)	O	O	x
	Light Scribe Media	O	x	O	O
	DVD-RAM	(O)	O	O	x

Writable : write once, read many times.

Rewritable : write data one or more times.



DVD Recommended Disc Types

▶ DVD-R Media

Taiyo-Yuden, TDK, MKM, Hitachi, Maxell, Fuji Film, PVC, Panasonic, RiTEK, CMC, UNIFINO

▶ DVD-RW Media

TDK, MKM, JVC, PVC, RiTEK, CMC

▶ DVD+R Media

RICOH, Taiyo-Yuden, MKM, RiTEK, CMC, Prodisc, Optdisc

▶ DVD+RW Media

RICOH, MKM, RiTEK, CMC

▶ DVD±R Dual

MKM

▶ DVD-RAM

Maxell

CD Recommended Disc Types

▶ CD-R Media

Taiyo-Yuden, RICOH, MKM, Hitachi, Maxell, Fuji Film, RiTEK(Phtharo), CMC, Pioneer, Princo, TDK

▶ **CD-RW Media**

RICOH, MKM, RiTEK, CMC

▶ **HS CD-RW Media**

RICOH, MKM, CMC

▶ **US CD-RW Media**

MKM

● **Light Scribe**

▶ **CD: MKM, MBI, CMC**

▶ **DVD: MKM**

● **Buffer underrun prevention technology included**

▶ What is "buffer underrun prevention technology"?

A technology to prevent "**buffer underrun**" errors in which the data transmission speed is not as fast as the data writing speed when data is being recorded on a CD.

● **Reading / Recording Speed**

▶ Reading Speed(MAX)

DVD-ROM(S)(16X), DVD-ROM(D)(8X), DVD-R (12X), DVD-RW (8X), DVD+R (12X), DVD+RW (8X), CD-ROM (48X), CD-R (40X), CD-RW (40X), DVD+R DUAL (8X), DVD-R DUAL (8X), DVD-RAM(12X)

▶ Recording Speed(MAX)

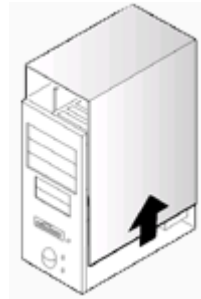
DVD+R DUAL (8X), DVD+RW (8X), DVD-R (18X), DVD+R (18X), DVD-RW (6X), CD-R (48X), CD-RW (32X), DVD-R DUAL (8X), DVD-RAM(12X)



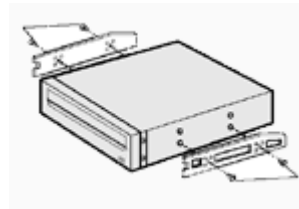


Installing Drive

1. Turn the PC off.
2. Open the cover as shown in the picture.



3. If necessary, attach the support devices on both sides of the drive
 - The support devices are PC accessories. Purchase a pair if necessary.
(SCREW : M3 X 6 X 4)



4. Insert the DVD Writer after removing the plate as below
 - Be sure to use the screws (M3x6) provided with the product.
 - Using screws other than M3x6 may cause malfunction.

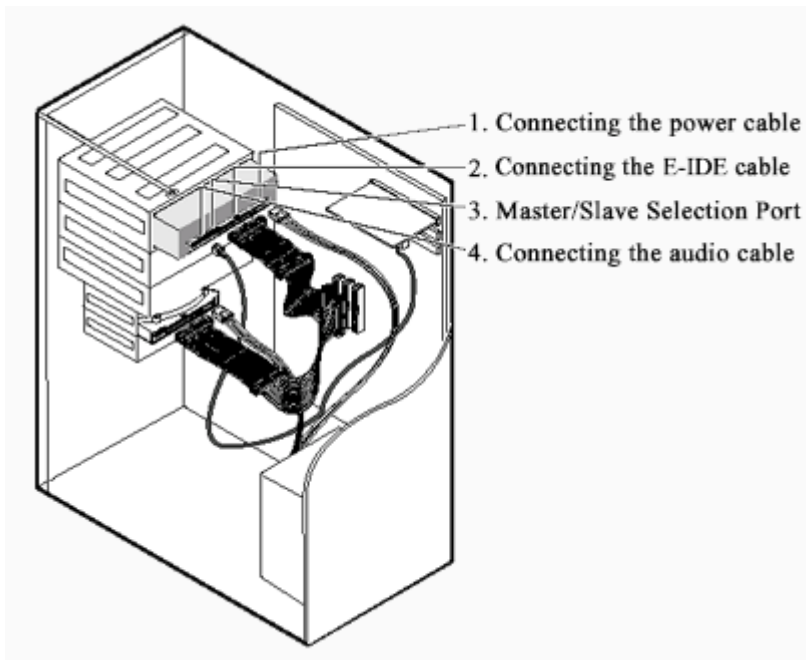


Be sure that the screws are tightened securely in place.
Loosely tightened screws may result in an increased level of noise.



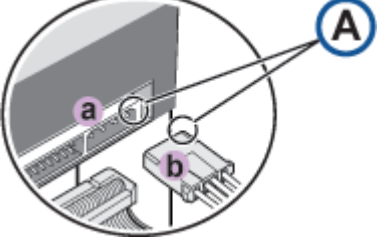
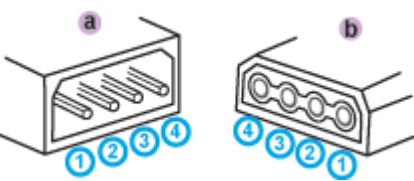


Connecting Cables



Connecting the Power Cable

Hold the power cable (with four pins) in the power box within the computer with the cutoff edges(㇏) facing up and connect it to the power port in the back of the DVD Writer

	
A - Cutoff edges	<ul style="list-style-type: none">1 +5V DC2 Ground3 Ground4 +12V DC

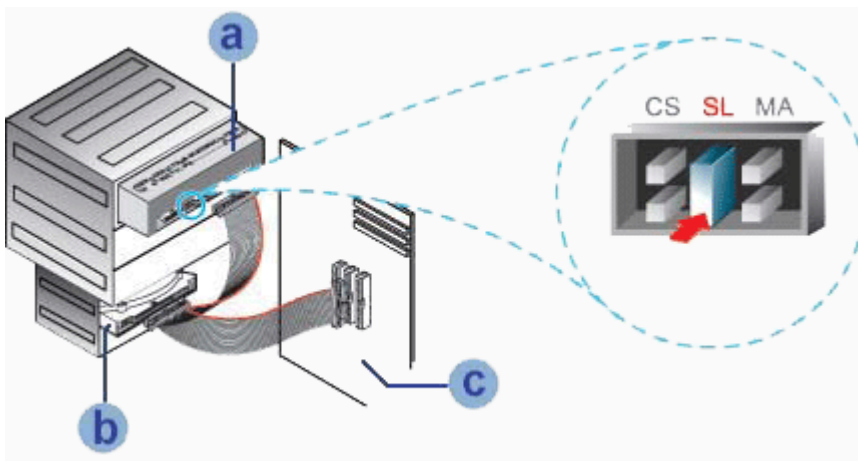


Improperly connected power cable may cause malfunction. Check the direction of the power cable and the cutoff edges before connecting the cable.

● Connecting E-IDE Cable

▶ When you use one E-IDE cable

Set the jumper to SL (slave) in the Master/Slave port in the back of the DVD Writer



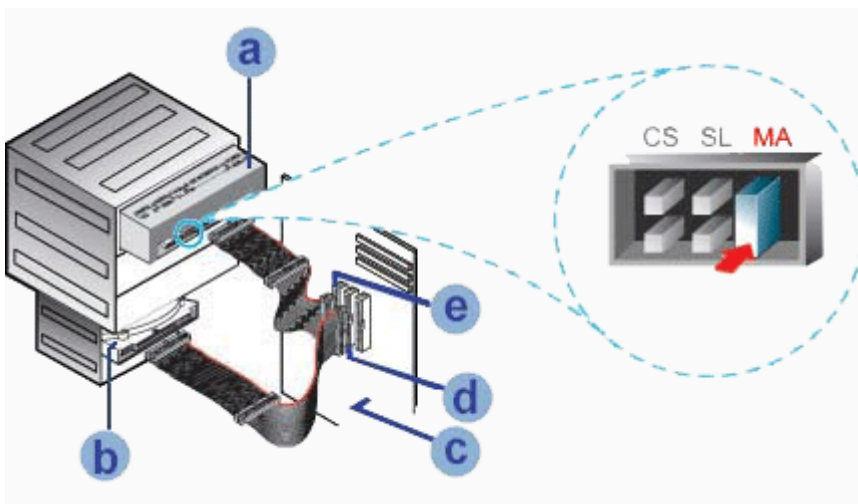
- a : Slave Drive (Select the SL jumper)
- b : HDD
- c : MotherBoard

▲UP

▶ When you use two E-IDE cables

Set the jumper to MA (Master) in the Master/Slave port in the back of the DVD Writer.

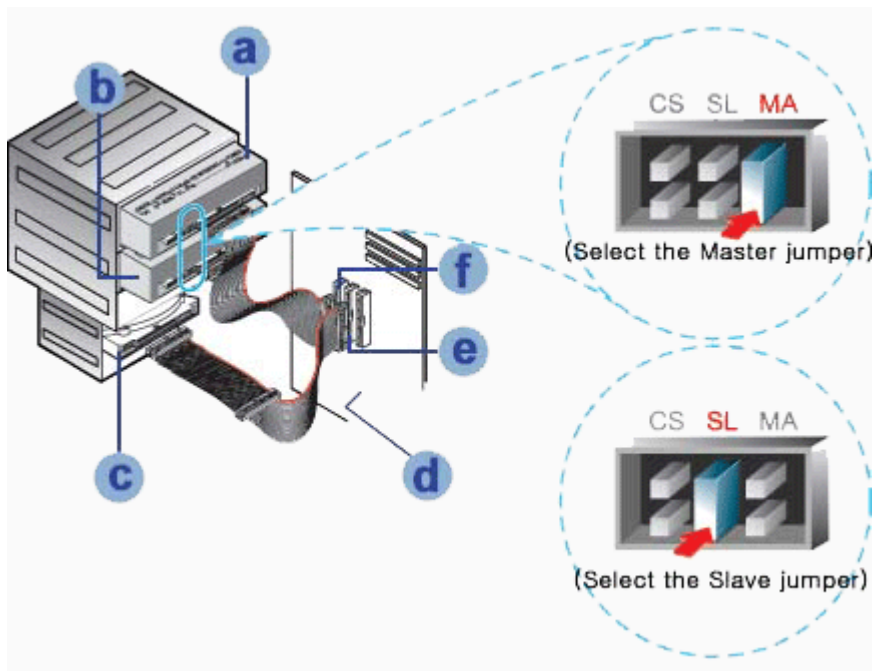
➕ When you have one DVD Writer: Set it to MA (Master)



- a : Master Drive (Select the MA jumper)
- b : HDD
- c : Motherboard
- d : Primary 1
- e : Secondary 1

▲UP

➕ When you have one DVD Writer and the other ODD products: Set it to MA (Master) / SL (Slave),

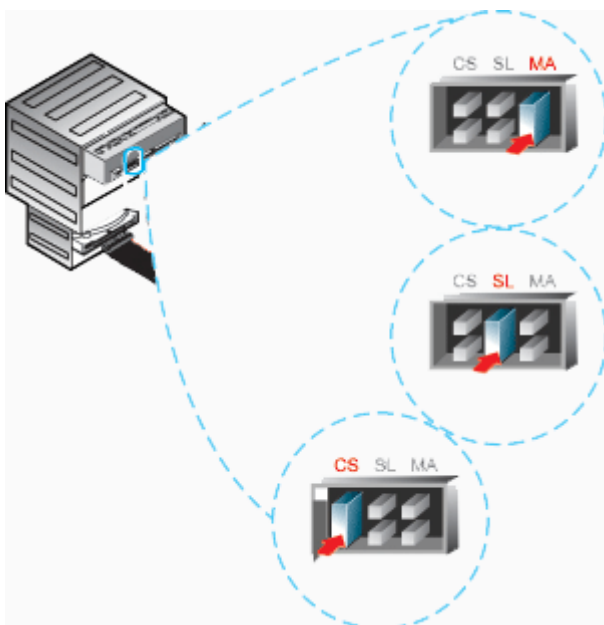


- | | |
|-----------------------------------------|----------------------------------------|
| a : Master Drive (Select the MA jumper) | b : Slave Drive (Select the SL jumper) |
| c : HDD | d : Motherboard |
| e : Primary 1 | f : Secondary 1 |

▲ UP

● Connecting the Jumper to the Master/Slave Port

- ▶ Connect the jumper to the slot in the back of the DVD Writer.
When you connect the jumper to MA (Master), the drive runs as the master, and when you connect it to SL (Slave), the drive runs as the slave.
When you connect it to CS (CSEL), you can control the device using the host interface signal CSEL.
(Connection to MA is recommended.)



- MA : Master
SL : Slave
CS : Cable Select(CSEL)

● **Connecting the Audio Cable (When Connected to the Sound Card)**

- ▶ To listen to the sound from the drive in Analog mode, connect the audio output on the DVD Writer to the audio input of the sound card using an audio cable (4-pin).

● **Connecting the Digital output terminal.**

- ▶ For clearer sound, use a digital output terminal.
Digital output terminal is only available with the Sound card which support Digital output.
For using Digital output terminal, recommend to buy & use the sound card.



Firmware Update

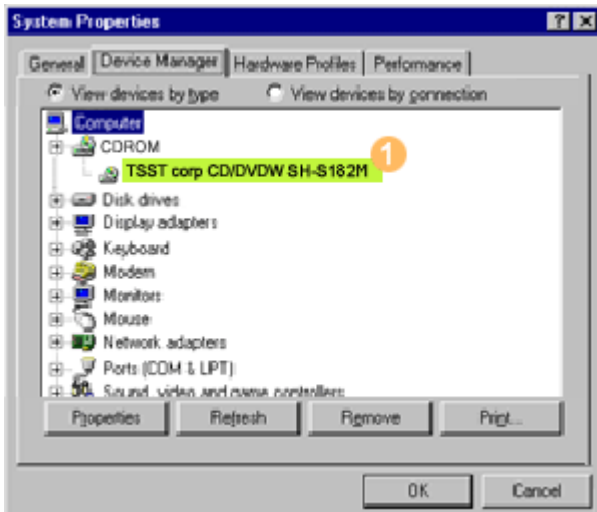
1. Go to <http://samsung-ODD.com>
2. Click Firmware on the menu bar (in the upper right-hand corner).
3. Click Firmware Downloads. Check for your drive model and start downloading.



Confirming the Installation of Device Driver

Confirming Using [Device Manager]

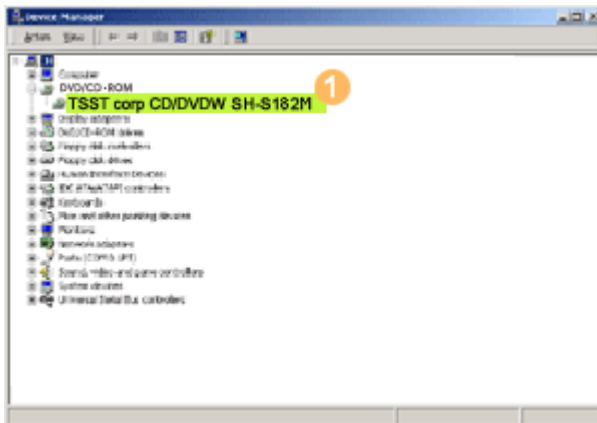
Windows 98 SE/Me



1. Click [Start] - [Settings] - [Control Panel] - [System]
2. Click on the [Device Manager] tab in the System Properties window.
3. Click CDROM drive in the Device Manager window.

1 in the picture in the left appear if the driver is installed properly.

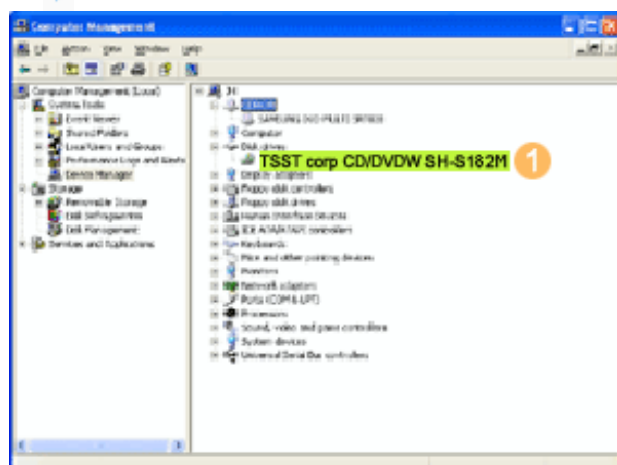
Windows 2000



1. Click [Start] - [Settings] - [Control Panel] - [System]
2. Click on the [Hardware] tab in the System Properties window and then click on the [Device Manager] tab.
3. Click DVD/CD-ROM drive in the Device Manager window.

1 in the picture in the left appear if the driver is installed properly.

Windows XP



1. Go to [Start] - [Settings] - [Control Panel] - [Performance and Maintenance]
2. Click [Administrative Tools] icon in the Performance and Maintenance window.
3. Click [Computer Management] icon in the Administrative Tools window.
4. Click [Device Manager] icon in the Administrative Tools window and then click DVD/CD-ROM drive.

1 in the picture in the left appear if the driver is installed properly.



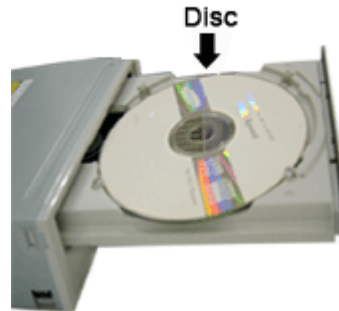
How to Use the Drive

When the On/Off light is orange, do not turn the PC off or remove the DVD Writer as it may cause damage in the drive.

How to Use a Horizontally Installed Drive

You can use **3.15 Inch or 4.72 Inch (8cm or 12cm) discs.**

The drive cannot read the disc properly if any part of the disc is placed outside the tray guiding line.



UP

How to Use a Vertically Installed Drive

This drive can be installed vertically.

You can use only the **4.72 Inch (12cm) discs.**

(You cannot use the 3.15 Inch (8cm) discs)

The drive cannot read the disc properly if any part of the disc is placed outside the tray guiding line.



UP



How to Use DVD±R/RW and Other Discs



The DVD Writer allows writing DVD RW discs using Nero Express and enables "packet writing" (high-speed recording) using InCD. The drive also allows writing DVD R discs using Nero Express.



Caution

Unauthorized copying of DVD or software titles is illegal and the individuals that make illegal copies will be held responsible for any copyright infringement. Using low-quality discs may lengthen the recording time or not supporting due to reduction in double speed.

- ▶ You can use the DVD Writer to playback music CDs, CD-ROM, CD-R/RW, or DVD-ROM discs, like a CD-ROM drive or a DVD-ROM drive. If your computer recognizes the [CD-ROM] icon designated to the DVD Writer as the 'E:' drive, insert a CD-ROM or a DVD-ROM disc and access the 'E:' drive.
(The actual drive letter of the DVD Writer may vary depending on the user's system environment.)

- ▶ To Playback a DVD Video Disc :
 - You need a DVD decoder board or the DVD decoder software program.
(Provided with WinDVD Show TIME)
 - Use WinDVD Show TIME to change the region code of the DVD Writer.

DVD Region Protection Coding (RPC):

The RPC feature is supported on DVD players and is used with DVD-video discs (such as movies). Currently, the motion picture industry has divided the world into different regions or zones that correspond to the regional markets into which the motion picture industry releases movies. Simply put, RPC codes are placed on movies marketed throughout the world, based on the region of the world in which they are being sold. These RPC codes help control and prevent pirating of new movies into other motion picture regions prior to their true release dates within those markets.

The **SH-S182M** DVD Writer supports RPC phase II. In the RPC-2 mode, the local code can be changed by users. RPC-2 is selected by default for the **SH-S182M** DVD Writer. You can change the region code up to five times via an MPEG application.

Please contact your dealer or local SAMSUNG representative if you wish to change the local code more than five times.



▶ What is a MAGIC SPEED?

MAGIC SPEED is a program that supports users to select at his or her discretion the reading speed of CD disc between two modes offered by drive: Maximum Speed Mode (Max Mode) and Silent Mode.

▶ Development Background

ODD products launching nowadays are providing a high reading speed. With the increased reading speed, faster data processing has become possible. However, high rotation speed often causes louder noise, and it is more possible to crash the cracked or bent discs. Against this backdrop, our Company has developed a speed-down algorithm and applied this technology to new launching products to provide safer and more comfortable environments for PC users.

※ What is Speed-down Algorithm?

It establishes a safer disc reading speed in operating the device in order to prevent possible disc crashes in using CDs with cracks in start. In addition, for customers who want to play CDs at its maximum speed, MAGIC SPEED program offers the function of selecting reading speed, so that customers can set the speed as they want. (Recording speed will run at recordable speed without limit)

▶ What Are MAGIC SPEED Modes and How to Use

MAGIC SPEED Modes

- Max Mode: Setting reading speed to its maximum level provided by drive.
- Silent Mode: Setting reading speed to a stable low speed.
- Since modes set by MAGIC SPEED function will be maintained in using the drive connecting other PC, please confirm first the setting status before use.

Caution: A disc with crack may be crashed in playing with Max Mode. We recommend you to use such disc in Silent Mode, or make a copy immediately before use.

How to Use MAGIC SPEED

- First, install MAGIC SPEED program registered on our website.
 - On MAGIC SPEED tray icon, select right-click to execute the program.
 - Select the mode you want to use on Program Execution Window and select "settings". Then, reading speed of the drive will run in selected mode.
 - Select "Close" to exit Program Execution Window.
In this occasion, reading speed will be run in the set speed if there is no separate mode change or program exit.
- > We recommend you to use "Max Mode" for data copy or disc copy, and "Silent Mode" for normal operation.
- > Other functions
- ▶ To disable Auto Run
This is a default program that automatically runs in every PC booting.
If you want to quit this auto run function, deselect the auto run item selected on tray icon menu.

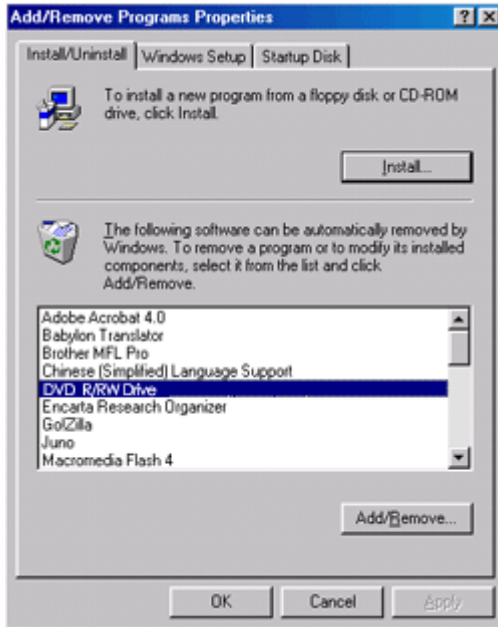
Where Can I Download MAGIC SPEED?

Visit our website for customer support (URL: www.samsung-ODD.com), and select Firmware → MAGIC SPEED.



Click [Start] - [Setting] - [Control Panel] - [Add/Remove Programs] and a window as shown below appears.

[Windows 98 / Me]



Click the [Add/Remove] button to remove the program.

▲ UP

[Windows 2000]



Click the [Add/Remove] button to remove the program.

▲ UP

[Windows XP]



Click the [Add/Remove] button to remove the program.

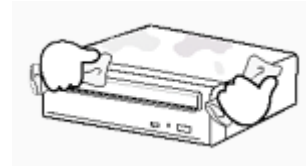


Cleaning the Drive

- Turn the PC off and pull out the drive.
- Remove any foreign objects from the surface of the drive using soft cloth.



- Do not use benzene, paint thinner, or any other solvents.
- Cleaning the interior of the unit with such things as a cotton swab may cause failure or loss of functionality.





**This part of the manual is to prevent damages or data loss.
Read carefully and use the device properly.**

Storing the Disc

- ▶ Do not place it under the direct sunlight.
- ▶ Place it so that it sits on its side on a flat surface.
- ▶ Do not scratch or place a label on the disc.
- ▶ Handle the disc with caution to prevent damage from external shock.
- ▶ Do not expose it to severe temperature fluctuations.
(Exposure to such environment may cause congealing.)





**This part of the manual is to prevent damages or data loss.
Read carefully and use the device properly.**



Cleaning the Disc

- Do not touch the surface of the disc.
Place your fingers on the edge of the disc to hold.
- Clean the disc lightly with soft cotton cloth, starting from the center and move to the edge of the disc.
- Use only disc cleaning liquids. Do not use benzene, paint thinner, or any other solvents.



If the disc surface becomes dirty with fingerprints, foreign substances or dust, the disc may not function properly.



When the on/off Light Blinks

On/Off Lamp	Meaning
Disc Lead-In	Green: Blinks every 0.3 seconds.
Writing	Green: Blinks every 0.3 seconds.
Reading	Green: Blinks every 0.3 seconds.
Audio Playback [Analog Mode]	Green: Blinks every 0.3 seconds.
Audio Playback [Digital Mode]	Green: Blinks every 0.3 seconds.
Standby	Off
No Disc	Off



The indicator light turns off when the drive is not in use (standby) after disc lead-in.



General Problems

Problem	Meaning / Solution
The tray won't open.	<p>See if the PC on.</p> <p>Make sure the power cable within the PC is connected properly.</p> <p>If the tray still won't open with the power on, turn the power off and insert a pin(paper clip) into the emergency hole to open.</p>
The tray won't close.	<p>Make sure the disc has been inserted properly.</p>
The PC is not working properly.	<p>See if the jumper(s) is properly connected to the Master/Slave Selection port.</p> <p>See if the drive is properly connected to the PC.</p> <p>See if the floppy disc remains in the PC.</p>
The drive is not working properly.	<p>See if the drive is connected properly to the PC.</p> <p>See if the device drive program has been installed properly.</p>
No sound is heard from an audio CD.	<p>Check whether the audio cable is correctly connected to the sound output terminal on the drive and the sound card CD-IN terminal.</p> <p>Check that the sound card is operational.</p> <p>If the Digital CD Audio Output box is checked, no sound comes out of the analog audio output terminal of the driver.</p> <p>Check the condition of the CD and wipe the surface of the CD clean before use.</p>
The Window OS can't detect the drive.	<p>See if the device drive program has been installed properly.</p> <p>Can be an OS problem. Try reinstalling the Windows OS program.</p>
The system won't read the disc.	<p>See if the system detects the drive.</p> <p>Make sure you use the types of discs that are supported by the drive.</p> <p>See if the on/off light turns into green.</p> <p>Make sure you inserted the disc with the label facing up.</p> <p>Make sure you are using the right program for disc playback.</p> <p>See if the disc is clean.</p> <p>See if any congealing has occurred.</p> <p>Make sure the region code of the drive matches the disc number.</p>
The drive is connected to the sound card but cannot seem to detect it.	<p>Your sound card is using AT BUS interface.</p> <p>Connect the card to the E-IDE port or replace the card with a new card with the built-in E-IDE interface capacity.</p>

**Caution: Possible Errors**

DVD Writers record data on the disc by applying laser light onto the surface of the CD/DVD, and therefore writing errors may occur if you use a damaged CD/DVD, for example. Be sure to eliminate the following error-causing elements before you start writing:

* The following settings are recommended for all DVD Writers:

1. Avoid a situation that requires multitasking, and remove turn off the screen saver.

- A buffer underrun may occur if the system multitasks while the DVD±R/RW CD-RW drive is writing/erasing.

2. Block any outside attempt to access the host PC during a writing session.

- An error may occur if another user accesses the printer connected to his/her the system via the network during a writing session.

3. Disable the CD auto - run feature of the CD.

- Inserting an auto - run-enabled CD in to another drive connected to the same system during a writing/erasing session may cause an error.

➔ How to disable the auto-run feature: Windows 98/ME

GO to Start * Settings * Control Panel * System * Hardware * Device Manger * CD- ROM Settings . Disable Insert AutoRun.

4. It is recommended that you use the image file format when you write a large number of small-sized files.

- When there are a large number of small-sized files to write, the system's transmission rate drops and the Superlink feature works at a more frequent rate, resulting in lower writing quality.
- If you are doing a CD-to-CD write, it is not necessary to check to see if you have available space on your hard disc beforehand.

However, in the case of image files, it is recommended that you be sure you have at least twice the amount of space needed for the data on your hard disc, as image files are copied to the hard disc before they are copied to the CD.

5. Use a regulation-length (46cm) or shorter E-IDE cable.

- Using an E-IDE cable longer than 46cm may cause a transmission error.

6. Do not use more than one type of writing software.

- Before you install a writing program, be sure to first uninstall existing versions of the program or other writing program (s) and reboot the system first .

(The Windows operating system may be damaged if you install the Korean version while the English version remains on the system.)

- Use only the writing software provided by Samsung.**
You may experience writing errors if you use with other writing programs.

The write speed for a disc can be restricted if:**1. The disc has bad properties data, and or there are other discs with different properties available under the same ID.**

The drive's write strategy is set in a way that the drive examines to examine the disc properties and determines the optimal write conditions for those properties.

For example, many disc makers do not bother to insert property information distinguishing 48X discs from 32X discs. Since the two types of discs have the same properties data, although they actually have different properties, it is often impossible to respond to the situation with a single write strategy. In order to ensure stable writing, it is necessary to downgrade the write speed.

If discs from two different disc makers have the same write speed according to the labels, but actually have different write speeds, it is necessary to downgrade the write speed to ensure stable writing.

2. Samsung's Standards for Write Speed Restriction**Standards 1**

Write speed is downgraded for the sake of write stability, if high-speed discs available in the market have particularly bad properties data, or there are low-speed discs available under the same ID.

Speed-restricted discs go through further examination and adjustments later. If high-speed discs are available under the same ID with as low-speed

Standards 2

discs (speed restricted at present), the speed restriction is removed when the low-speed counterparts become no longer available in the market under the same ID.



You may experience lower write quality in case if you use disc products by some disc makers which that are not registered with the product's firmware. Therefore, it is recommended that you use only discs by recommended companies. Even, and even if the write session is completed successfully, check the write quality before you put the disc in storage, especially in case of an important data backup. (Samsung is not responsible for any loss resulting from data backup failure.)



We update the list of supported media on a regular basis through our firmware upgrades





Category		SH-S182M(TS-H652M)		
		DVD Writer		
DISC		DVD : DVD-R, DVD-RW, DVD+R, DVD+RW, DVD-ROM, DVD-Video, DVD+R (Dual), DVD-R (Dual), LightScribe DVD±R, DVD-RAM		
	Usable Discs	CD : CD-ROM, CD-R, CD-RW, CD-DA, CD+E(G) CD-MIDI, CD-TEXT, CD-ROM XA, Mixed Mode CD CD-I, CD-I Bridge (Photo-CD, Video-CD), Multisession CD (Photo-CD, CD-EXTRA, Portforio) LightScribe CD-R		
	Disc Diameter	4.72 Inch or 3.15 Inch (120mm or 80mm)		
Interface Support	Interface Port	ATA/ATAPI (E-IDE)		
	PIO mode	PIO Mode 4: 16.6MB/sec		
	DMA mode	Ultra DMA Mode 2: 33.3MB/sec		
ACCESS TIME (Random)	CD-ROM	110ms (Random)		
	DVD-ROM	130ms (Random)		
Disc Labeling Time	Setting	Titles only	Titles and contents	The entire label area (including graphics)
	Best	Less than 4 min	Less than 9 min	Less than 36 min
	Normal	Less than 3 min	Less than 7 min	Less than 28 min
	Draft	Less than 2 min	Less than 4 min	Less than 20 min
Data Transfer Speed (Max)	Media Type		Write	Read
	DVD+R		CAV 18X (24.3MB/sec)	CAV 12X (16.2MB/sec)
	DVD+RW		Z-CLV 8X (10.8MB/sec)	CAV 8X (10.8MB/sec)
	DVD+R DUAL		Z-CLV 8X (10.8MB/sec)	CAV 8X (10.8MB/sec)
	DVD-R DUAL		Z-CLV 8X (10.8MB/sec)	CAV 8X (10.8MB/sec)
	DVD-R		CAV 18X (24.3MB/sec)	CAV 12X (16.2MB/sec)
	DVD-RW		Z-CLV 6X (8.1MB/sec)	CAV 8X (10.8MB/sec)
	DVD-ROM(Single)		-	CAV 16X (21.6MB/sec)
	DVD-ROM(Dual)		-	CAV 8X (10.8MB/sec)
	DVD-RAM		CAV 12X(16.2MB/sec)	CAV 12X(16.2MB/sec)
	CD-ROM		-	CAV 48X(7.2MB/s)
	CD-R		PCAV 48X (7.2MB/sec)	CAV 40X (6.0MB/sec)
	US-RW		Z-CLV 32X (4.8MB/sec)	CAV 40X (6.0MB/sec)
	HS-RW		CLV 10X (1.5MB/sec)	CAV 40X (6.0MB/sec)
	CD-RW		CLV 4X (0.6MB/sec)	CAV 40X (6.0MB/sec)
Buffer Memory		2MB		
Drive Installation		Horizontal / Vertical		
Operating Environment	Temperature	41°F ~ 122°F (5°C ~ 45°C)		
	Humidity	5% ~ 80% (RH)		
Size(Width x Height x Length)		5.83 X1.65 X 6.69 Inch (148.2 X 42 X 170mm)		
Weight		750g		

**Note**

- ▶ Does not support DVD-R for Authoring.
- ▶ Cannot playback or record on both sides of a two-sided disc simultaneously.
- ▶ The read/write capacity of the supported discs depends on the condition of the disc and the recording format of the drive. Therefore, the read/write quality may not be perfect.
- ▶ Severe vibration or external impact may decrease the quality of printed images. Please firmly place the product onto the PC before use.
- ▶ In case of disk identification error message, thoroughly clean the surface of the disk

where the label is presented and then start printing.

- ▶ The quality of the printed image cannot be ensured if printing an image on the area which is already used for printing.
- ▶ For more information on the writing and duplicating the Lightscribe disk label, install Nero software and refer to the HELP section.



Fcc information to the user

This equipment has been tested and found to comply with the limits for a class B digital device, pursuant to part 15 of the FCC rules.

These limits are designed to provide reasonable protection against harmful interference in a residential installation. This equipment generates.

Uses and can radiate radio frequency energy and, if not installed and used in accordance with the instructions, may cause harmful interference to radio communications. However, there is no guarantee that interference will not occur in a particular installation.

If this equipment does cause harmful interference to radio or television reception,

which can be determined by turning the equipment off and on, the user is encouraged to try to correct the interference by one or more of the following measures.

- ▶ Reorient or relocate the receiving antenna.
- ▶ Increase the separation between the equipment and receiver.
- ▶ Connect the equipment into an outlet on a circuit different from that to which the receiver is connected.
- ▶ Consult the dealer or experienced radio/TV technician for help.

CAUTION

Change or modifications not expressly approved by the manufacturer responsible for compliance could void the user's authority to operate the equipment.



Laser Standard

IEC 60825-1 : 1993 + A1 : 1997 + A2 : 2001



The product specifications above may be changed improve device performance without prior notice.