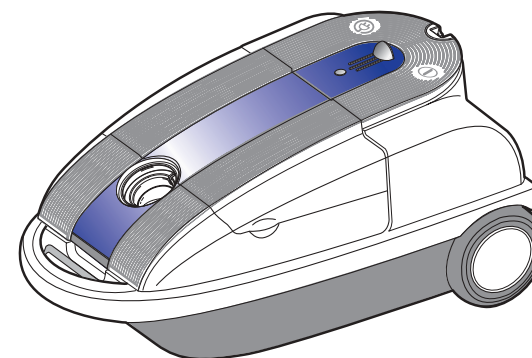




Operating Instructions



VACUUM CLEANER



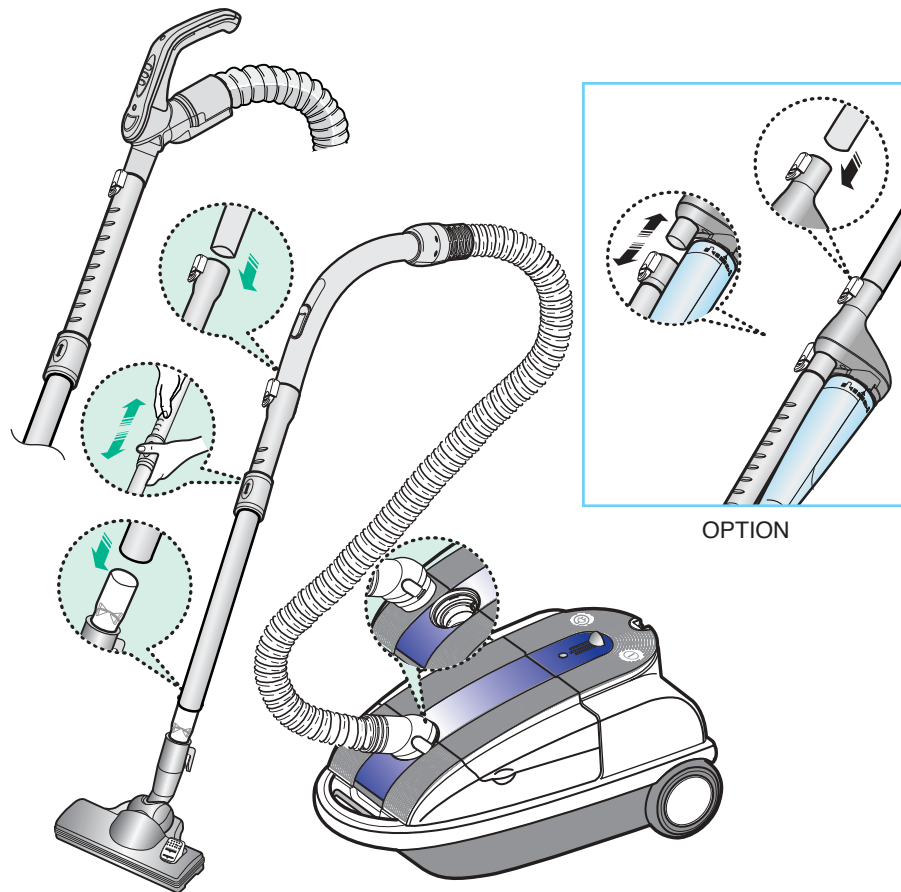
* Before operating this unit, please read the instructions carefully.

* Indoor use only.

IMPORTANT SAFEGUARDS

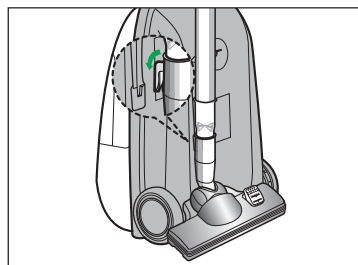
1. Read all instructions carefully. Before switching on, make sure that the voltage of your electricity supply is the same as that indicated on the rating plate on the bottom of the cleaner.
2. **WARNING:** Do not use the vacuum cleaner when rug or floor is wet.
Do not use to suck up water.
3. This appliance is not intended for use by young persons or infirm persons without supervision unless they have been adequately supervised by a responsible person to ensure that they can use the appliance safely.
Young children should be supervised to ensure that they do not play with the appliance.
4. Do not use the vacuum cleaner without a dust bag(dust bin). Empty the dust bin before it is full in order to maintain the best efficiency.
5. Do not use the vacuum cleaner to pick up matches, live ashes or cigarette butts. Keep the vacuum cleaner away from stoves and other heat sources. Heat can deform and discolour the plastic parts of the unit.
6. Avoid picking up hard, sharp objects with the vacuum cleaner as they may damage the cleaner parts. Do not stand on the hose assembly. Do not put a weight on the hose. Do not block the suction or the exhaust port.
7. Switch the vacuum cleaner off at the machine before unplugging from the electrical outlet. Grasp the plug to disconnect cord from the electrical outlet before changing the dust bag.
8. The plug must be removed from the socket outlet before cleaning or maintaining the appliance.
9. The use of an extension cord is not recommended.
10. If your vacuum cleaner is not operating correctly, switch off the power supply and consult an authorized service agent.
11. If the supply cord is damaged, it must be replaced by the manufacturer or its service agent or a similarly qualified person in order to avoid a hazard.
12. Don't carry the vacuum cleaner by holding the hose.
Use the handle on the vacuum cleaner set.

1 ASSEMBLING THE CLEANER



OPTION

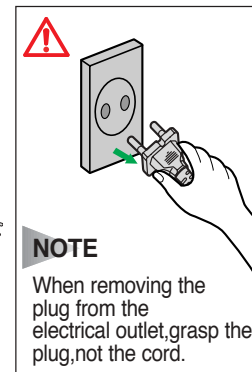
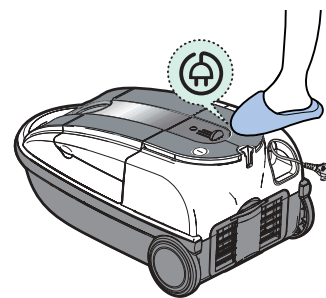
► Features may vary according to model.



For storage, park the floor nozzle.

2 OPERATING THE CLEANER

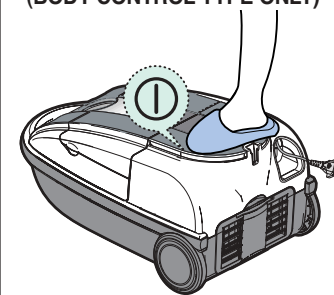
2-1 POWER CORD



NOTE

When removing the plug from the electrical outlet, grasp the plug, not the cord.

2-2 ON/OFF SWITCH (BODY-CONTROL TYPE ONLY)

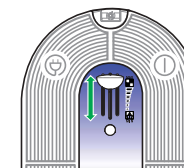


2-3 POWER CONTROL

1) BODY-CONTROL TYPE

MIN = For delicate surface e.g. net curtains.

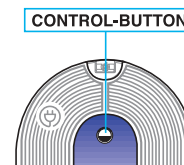
MAX = For hard floors and heavily soiled carpets.



2) REMOTE-CONTROL TYPE



INFRARED-CONTROL

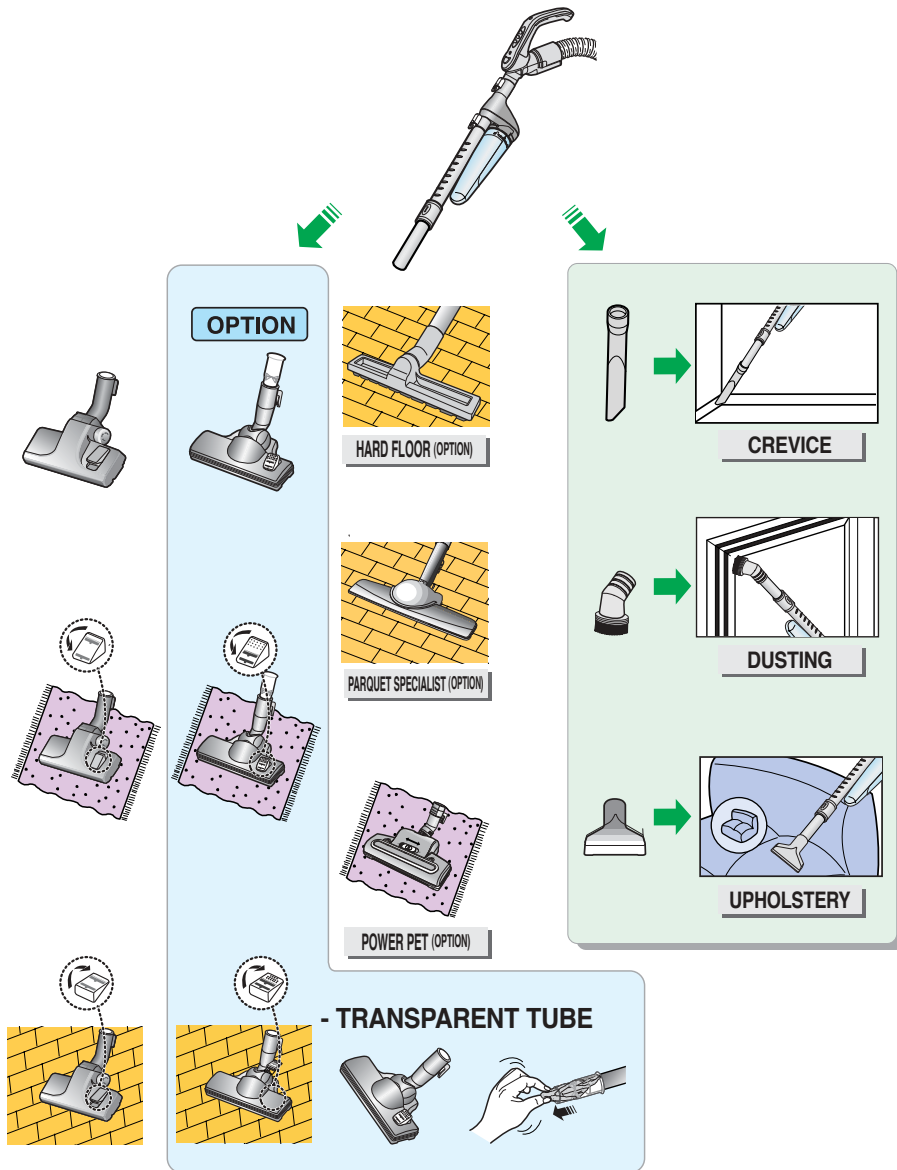


Press control button repeatedly to select correct mode.
(STOP → MIN → MID → MAX)

NOTE

If the cleaner is not working by handle-control you can operate the vacuum cleaner with the CONTROL-BUTTON on the body.

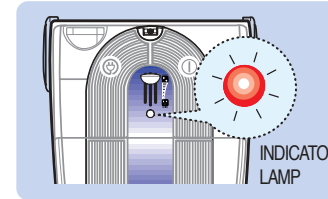
2-4 USING FLOOR TOOLS



3 LAMP SIGNALS

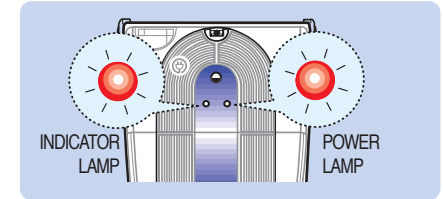
1) BODY-CONTROL TYPE

Check the Dust bag and change it.
(Check the Dust bin and empty it.)



2) REMOTE-CONTROL TYPE

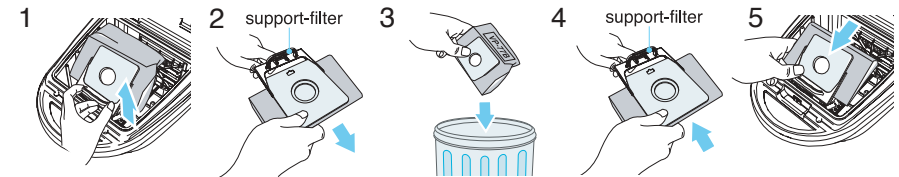
Check the Dust bag and change it.
(Check the Dust bin and empty it.)



* LAMP SIGNALS

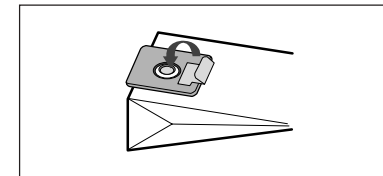
1. INDICATOR LAMP ON:
The dust bag is full, or the pipe is blocked.
2. POWER LAMP ON:
The power is applied to the vacuum cleaner

4 CHANGING THE DUST BAG



NOTE

A used dust bag can be sealed by removing the paper from the adhesive strip and sealing the strip over the hole.



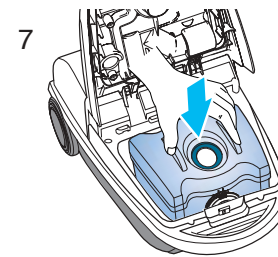
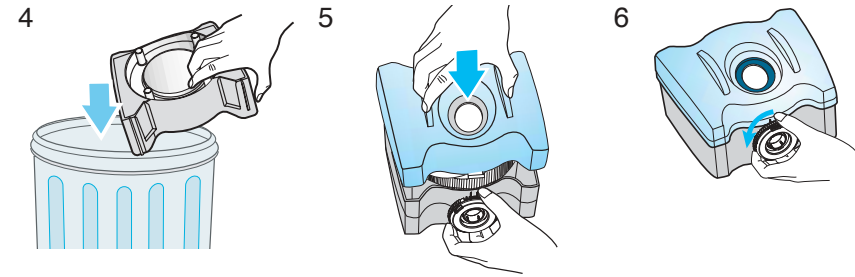
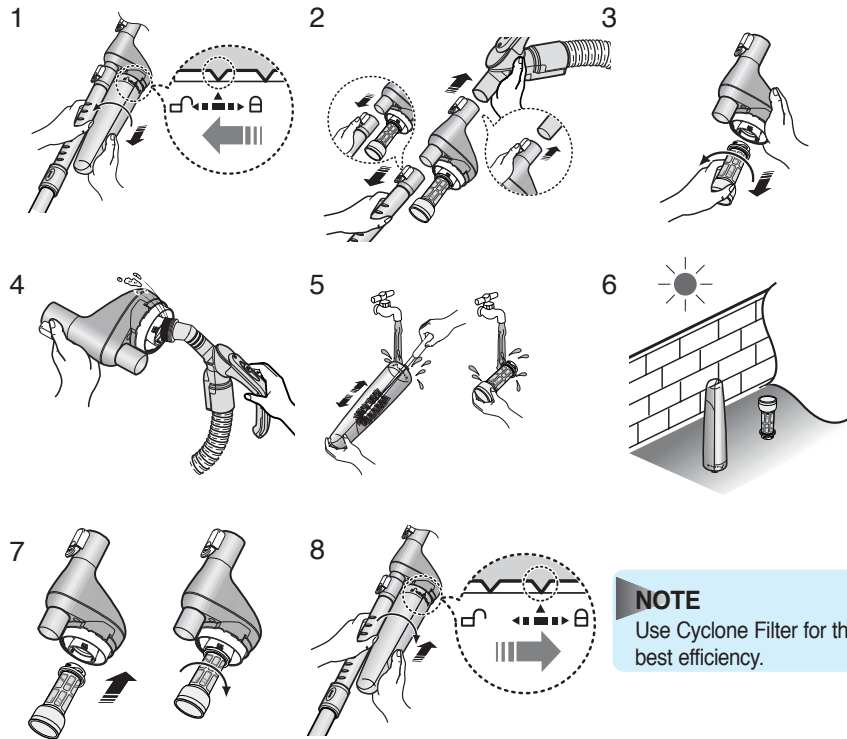
⚠ OPTIONAL

- FOR CLOTH BAG
After using, if the cloth bag is full of dust, clean the cloth bag and use it again.

NOTE

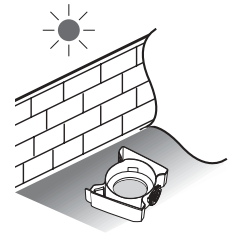
Please make sure to retain the support-filter when you dispose of the dust bag.

5 CLEANING THE CYCLONE FILTER (Optional)



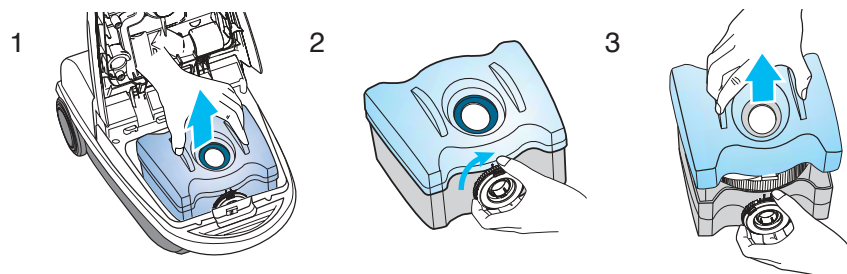
OPTIONAL

You can rinse the bin with water.
Do not immerse the whole cleaner in water.
Ensure completely dry before replacing.

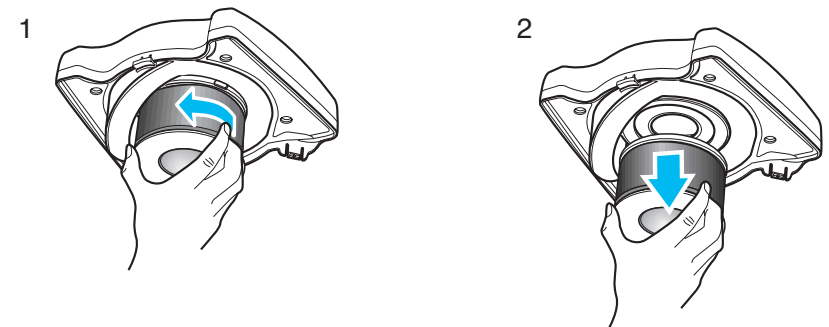


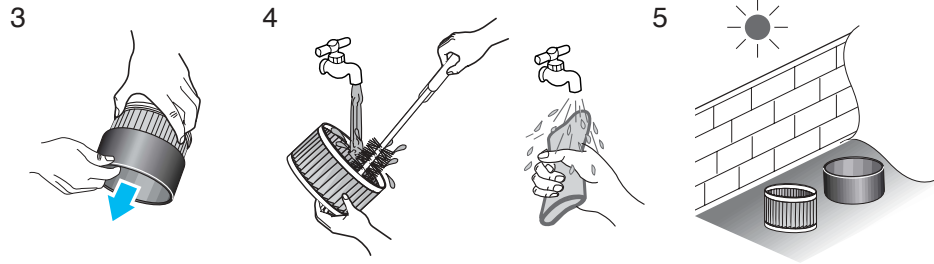
6 CARING THE DUST BIN(OPTIONAL)

6-1 EMPTY THE DUST BIN

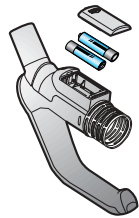


6-2 CLEANING THE GRILL





7 CHANGE THE BATTERY(OPTIONAL)



1) BATTERY TYPE : AA Size



NOTE

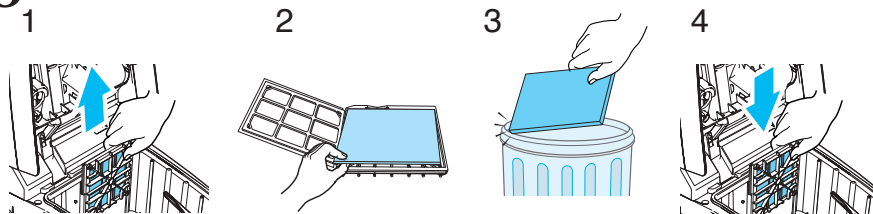
1. When the vacuum cleaner does not operate, replace the batteries. If the problem persists, please contact our authorized dealer.
2. 2 of Battery type



WARNING

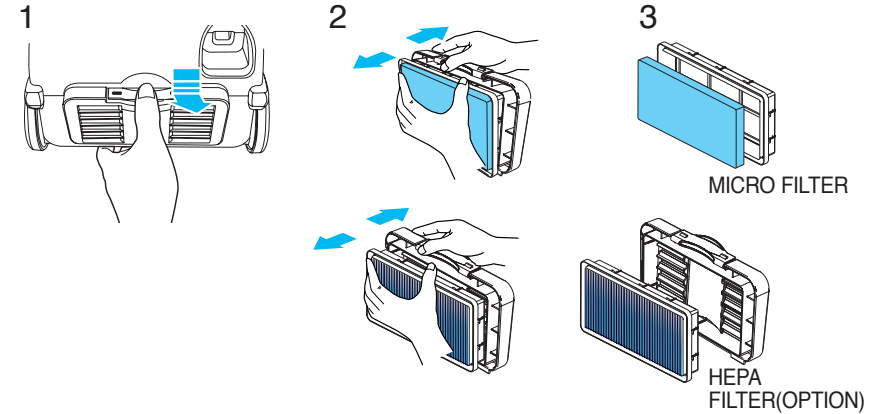
1. Never disassemble or recharge the batteries.
2. Never heat up the batteries or throw them into fire.
3. Do not reverse (+),(-) terminals.
4. Dispose the batteries properly.

8 CLEANING THE INLET FILTER



NOTE : Don't throw away the filter

9 OUTLET FILTER



NOTE : Replacement filters or bags can be bought from your local Samsung distributor.

- IF YOU HAVE A PROBLEM

PROBLEM	CAUSE	REMEDY
Motor does not start.	No power supply. Thermal cut-out.	Check cable, plug and socket. Leave to cool.
Suction force is gradually decreasing.	Nozzle, suction hose or tube is blocked.	Check for blockage and remove.
Cord does not rewind fully.	Check that the cord is not twisted or wound unevenly.	Pull the cord out 2-3m and push down the cord rewind button.
Vacuum cleaner does not pick up dirt.	Crack or hole in hose.	Check hose and replace if required.