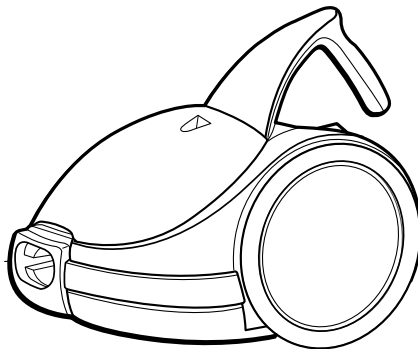


**SAMSUNG**

# Operating Instructions



## ***VACUUM CLEANER***



\* Before operating this unit, please read the instructions carefully.

Register your product at [www.samsung.com/global/register](http://www.samsung.com/global/register)

## FEATURES

Features include automatic cord rewind and dust indicator.

Remote power control option available.

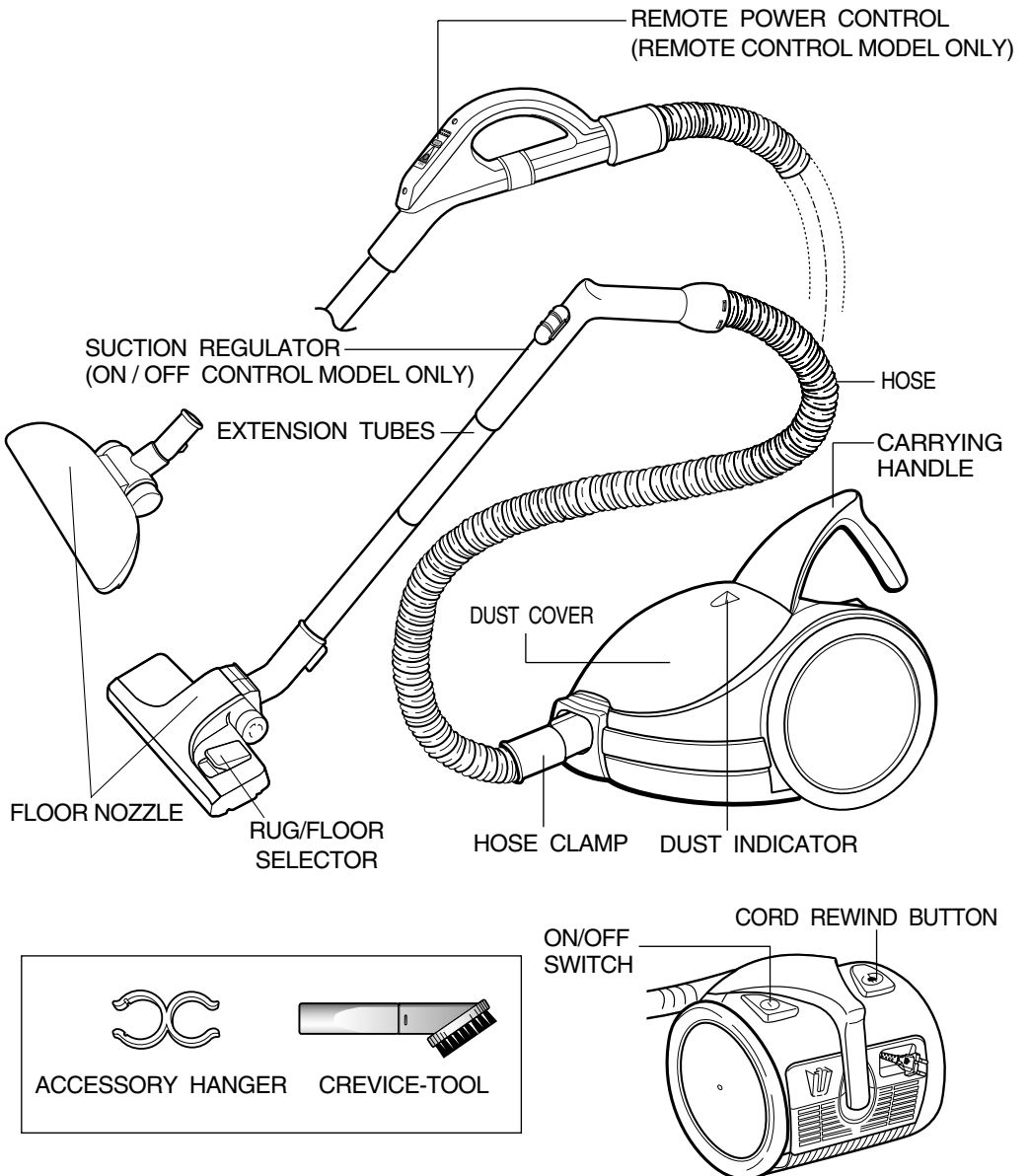
## IMPORTANT SAFEGUARDS

1. Read all instructions carefully. Before switching on, make sure that the voltage of your electricity supply is the same as that indicated on the rating plate on the bottom of the cleaner.
2. **WARNING:** Do not use the vacuum cleaner when rug or floor is wet.
3. Close supervision is necessary when any appliance is used by or near children. Do not allow the vacuum cleaner to be used as a toy. Do not allow the vacuum cleaner to run unattended at any time. Use the vacuum cleaner only for its intended use as described in the instructions.
4. Do not use the vacuum cleaner without a dust bag. Change the dust bag before it is full in order to maintain best efficiency.
5. Do not use the vacuum cleaner to pick up matches, live ashes or cigarette butts. Keep the vacuum cleaner away from stoves and other heat sources. Heat can deform and discolour the plastic parts of the unit.
6. Avoid picking up hard, sharp object with the vacuum cleaner as they may damage the cleaner parts. Do not stand on the hose assembly. Do not put a weight on the hose. Do not block the suction or the exhaustion part.
7. Switch the vacuum cleaner off at the machine before unplugging from the electrical outlet. Grasp the plug to disconnect from power outlet to avoid damage to cord, plug, prongs or socket. Always disconnect cord from electrical outlet before changing the dust bag.
8. The use of an extension cord is not recommended.
9. If your vacuum cleaner is not operating correctly, switch off the power supply and consult an authorized service agent.
10. Do not attempt to replace a damaged power supply cord. Only the manufacturer or qualified service personnel can replace power cords. Serious injury may result.

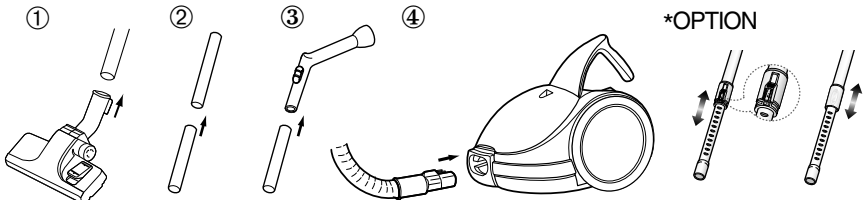
## Warning

1. This hose contains electrical connections
2. Do not use to suck up water.
3. Do not immerse in water for cleaning.
4. The hose should be checked regularly and must not be used if damaged.

## IDENTIFICATIONS OF PARTS



## ASSEMBLING THE VACUUM-CLEANER SO THAT IT IS READY FOR USE

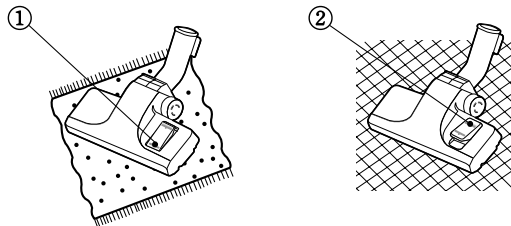


1. Slide the free end of the extension wand into the nozzle tube.
  2. Slide the narrow end of one extension wand into the other extension wand.
  3. Slide the extension wand into the handle end of the hose.
  4. Slide the hose clamp into the suction inlet of the unit.
- \*OPTION :** Adjusting the telescopic tubes (depending on model).

## USAGE OF FLOOR NOZZLE

### FOR RUG / FLOOR SELECTOR

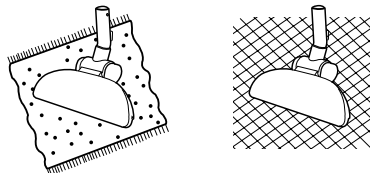
Before use make sure that the position of the selector is in the right position for the type of surface to be cleaned.



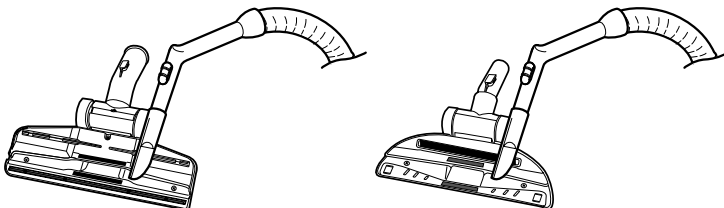
Select the carpet indicator ① when cleaning carpets.  
Select flat surface indicator ② when cleaning the floors, tiles, etc.

### FOR UNIVERSAL BRUSH

Use the floor nozzle for all cleaning surfaces.



**NOTE :** For optimum efficiency, clean floor brush with crevice tool.

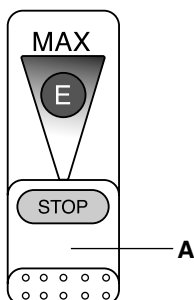


## SUCTION POWER CONTROL (REMOTE CONTROL MODEL ONLY)

Your cleaner has variable electronic suction control to give you greater versatility.

Select the most suitable position according to cleaning needs.

The suction capacity can be regulated steplessly by moving the slide to the desired position



### SLIDE THE PART “A” IN THE STOP POSITION

Vacuum cleaner switches off (stand by mode)

### SLIDE THE PART “A” TOWARDS MAX

Suction capacity increases steplessly up to MAX.

## DUST INDICATOR

You may continue cleaning until the dust indicator changes and displays a red colour. This means the dust bag is full and needs to be replaced.

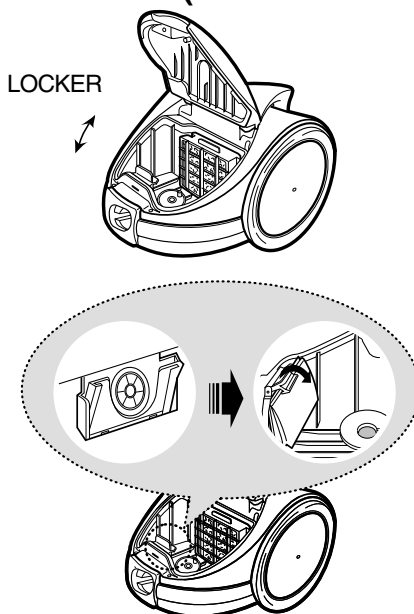
If the indicator suddenly displays red and the cleaner loses suction power while in use, turn your cleaner off and check whether the hose, pipe or nozzle is clogged.

When you check bag status by indicator, set motor power on maximum position.

## DUST BAG REMOVAL(DUST COVER)

**NOTE :** Hose must be disconnected before changing bag.  
Replace the dust bag as soon as it is full.

1. To open the dust cover of the dust bag compartment, lift the cover upward.
2. Remove the dust bag from the cleaner.
3. Dispose of the full bag. Insert the cardboard bag collar of the dust bag as far as it can go on the suction inlet along the slide guide. Press down the locker. Position the dust bag so that no part of the bag is pinched.
4. Press the front of dust cover down lightly until it re-locks.



### IF YOU USE PAPER DUST BAG

After using, if the paper dust bag is full of dust, dispose the paper bag. It should not be used it again.

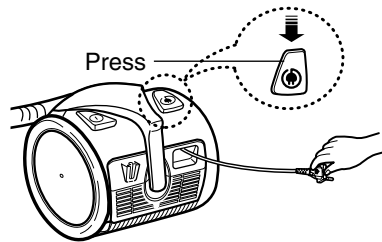
### IF YOU USE CLOTH FILTER BAG

After using, if the cloth filter bag is full of dust, clean the cloth filter bag and use it again. After washing, it should be dried thoroughly. Serious injury may result.

**NOTE :** There are two types of dust bag according to the model. One is paper dust bag type. The other is a cloth filter bag type.

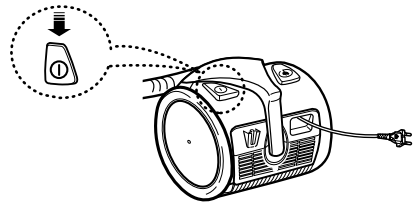
## CORD STORAGE

To extend the power cord for use, grasp the plug and gently pull out from the vacuum cleaner. When removing the power cord from the electrical outlet, switch off the power and grasp the plug. Your cleaner is equipped with an automatic rewind button. After cleaning, switch off power and disconnect the plug from the electrical outlet then press on the cord rewind button with your hand. The cord will be rewound automatically.



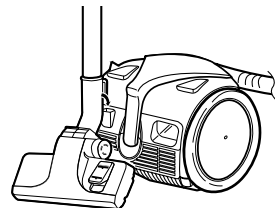
## ON / OFF SWITCH

With the cord plugged into an electrical outlet, start or stop the vacuum cleaner by pushing lightly on the switch downward with your toe.



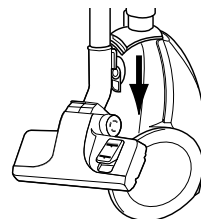
## PARK POSITION

Located on the top rear side of the vacuum cleaner, there is a support for a convenient park position during pauses when using the nozzle.



## STANDS ON END

Your cleaner is designed to stand firmly upright for cleaning or storage. Use in this manner and it takes up a minimum of space, and allows you to work in the narrowest spaces.



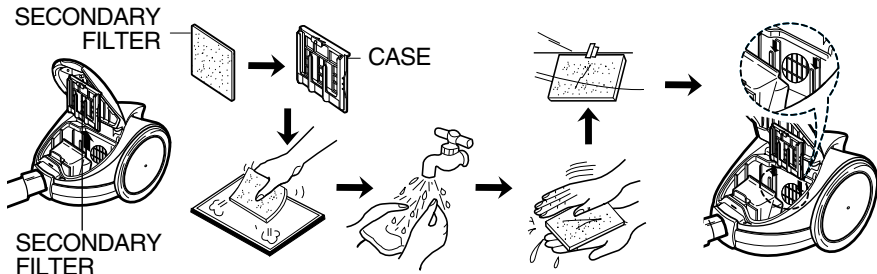
## CARE OF FILTERS

### ► SECONDARY FILTER

To protect the motor, your cleaner features a secondary filter at the front of the motor in the dust compartment.

Do not allow the filter to become clogged. Suction power reduction or motor damage may result.

After washing the secondary filter in warm water, dry it thoroughly, then attach it in place.

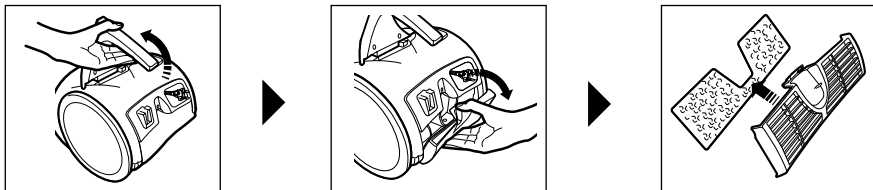


### ► MICRO FILTER

1) Lift the carrying handle.

2) Separate the exhaust filter.

3) Reassemble it after cleaning.



**NOTE :** The filters must be completely dried before being replaced in the dust compartment.

## TOOL STORAGE

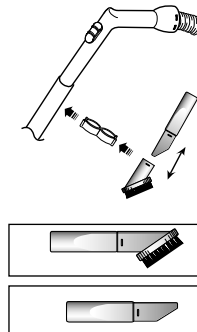
Your cleaner features an tool storage space.

Assemble the accessory hanger on to the extension tube

It can be used to store the cleaning tool while they are not in use.

This tool can be separated into two parts.

- Dusting brush for furniture, shelves, books, etc.
- Crevice tool for radiators, crevice, corners, between cushions.



## IF YOU HAVE A PROBLEM

This appliance was inspected thoroughly and was in good operating condition when it was shipped from the factory.

If a minor problem occurs, it can usually be solved quite easily when the cause is found.

Therefore, this check list is provided for your convenience.

PROBLEM	POSSIBLE CAUSE	POSSIBLE SOLUTION
Cleaner Will Not Run	1. Not firmly plugged in. 2. No voltage in wall plug.	1. Plug in firmly. 2. Check fuse or breaker.
Cleaner Does Not Pick Up Properly	1. Dust bag is full. 2. Hose clogged with a large object.	1. Change dust bag. 2. Remove substance.

This Vacuum cleaner is approved the following.

EMC Directive : 89/336/EEC , 92/31/EEC and 93/68/EEC

Low Voltage Safety Directive : 73/23/EEC and 93/68/EEC