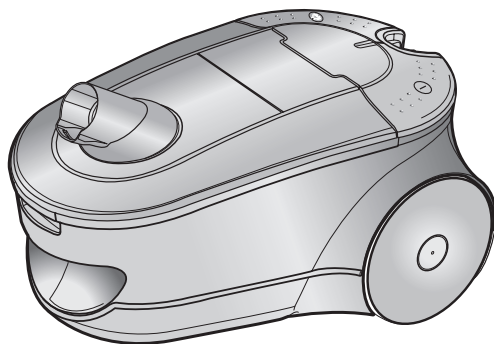


SAMSUNG

Operating Instructions

VACUUM CLEANER



- * Before operating this unit, please read the instructions carefully.
- * Indoor use only.

Register your product at www.samsung.com/global/register

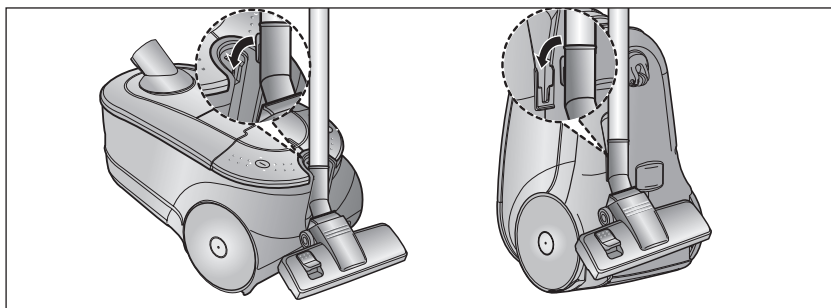
IMPORTANT SAFEGUARDS

1. Read all instructions carefully. Before switching on, make sure that the voltage of your electricity supply is the same as that indicated on the rating plate on the bottom of the cleaner.
2. **WARNING:** Do not use the vacuum cleaner when rug or floor is wet.
Do not use to suck up water.
3. Close supervision is necessary when any appliance is used by or near children. Do not allow the vacuum cleaner to be used as a toy. Do not allow the vacuum cleaner to run unattended at any time. Use the vacuum cleaner only for its intended use as described in these instructions.
4. Do not use the vacuum cleaner without a dust bag (dust bin). Empty the dust bin before it is full in order to maintain the best efficiency.
5. Do not use the vacuum cleaner to pick up matches, live ashes or cigarette butts. Keep the vacuum cleaner away from stoves and other heat sources. Heat can deform and discolour the plastic parts of the unit.
6. Avoid picking up hard, sharp objects with the vacuum cleaner as they may damage the cleaner parts. Do not stand on the hose assembly. Do not put a weight on the hose. Do not block the suction or the exhaust port.
7. Switch the vacuum cleaner off on the body of the machine before unplugging from the electrical outlet. Disconnect plug from the electrical outlet before changing the dust bag or dust container. To avoid damage, please remove the plug by grasping the plug itself, not by pulling on the cord.
8. This appliance is not intended for use by young persons or infirm persons without supervision unless they have been adequately supervised by a responsible person to ensure that they can use the appliance safely.
Young children should be supervised to ensure that they do not play with the appliance.
9. The plug must be removed from the socket outlet before cleaning or maintaining the appliance.
10. The use of an extension cord is not recommended.
11. If your vacuum cleaner is not operating correctly, switch off the power supply and consult an authorized service agent.
12. If the supply cord is damaged, it must be replaced by the manufacturer or its service agent or a similarly qualified person in order to avoid a hazard.
13. Don't carry the vacuum cleaner by holding the hose.
Use the handle on the vacuum cleaner set.

1 ASSEMBLING THE CLEANER



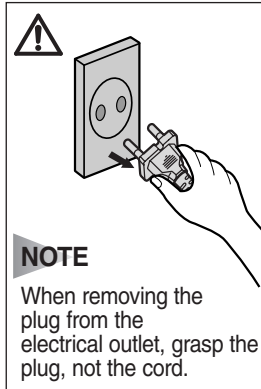
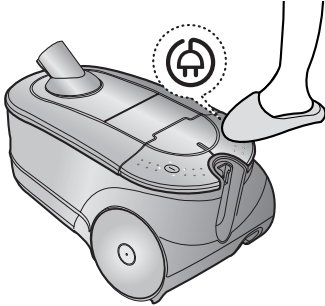
► Features may vary according to model.



For storage, park the floor nozzle.

2 OPERATING THE CLEANER

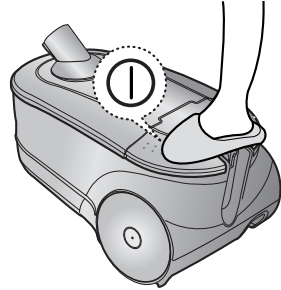
2-1 POWER CORD



NOTE

When removing the plug from the electrical outlet, grasp the plug, not the cord.

2-2 ON/OFF SWITCH

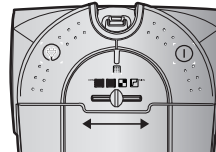


2-3 POWER CONTROL

1) BODY-CONTROL TYPE

MIN = For delicate surface e.g. net curtains.

MAX = For hard floors and heavily soiled carpets.

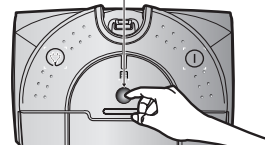


2) REMOTE-CONTROL TYPE



INFRARED-CONTROL

POWER CONTROL

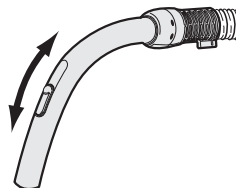


Press The Power-control button repeatedly to select correct mode.
(STOP → MIN → MID → MAX)

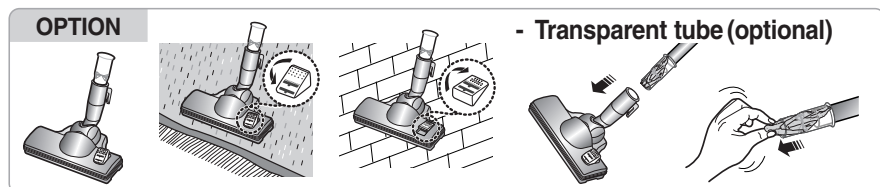
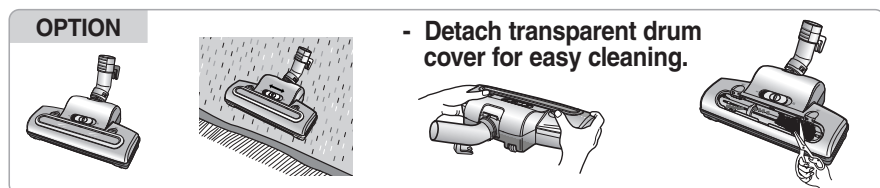
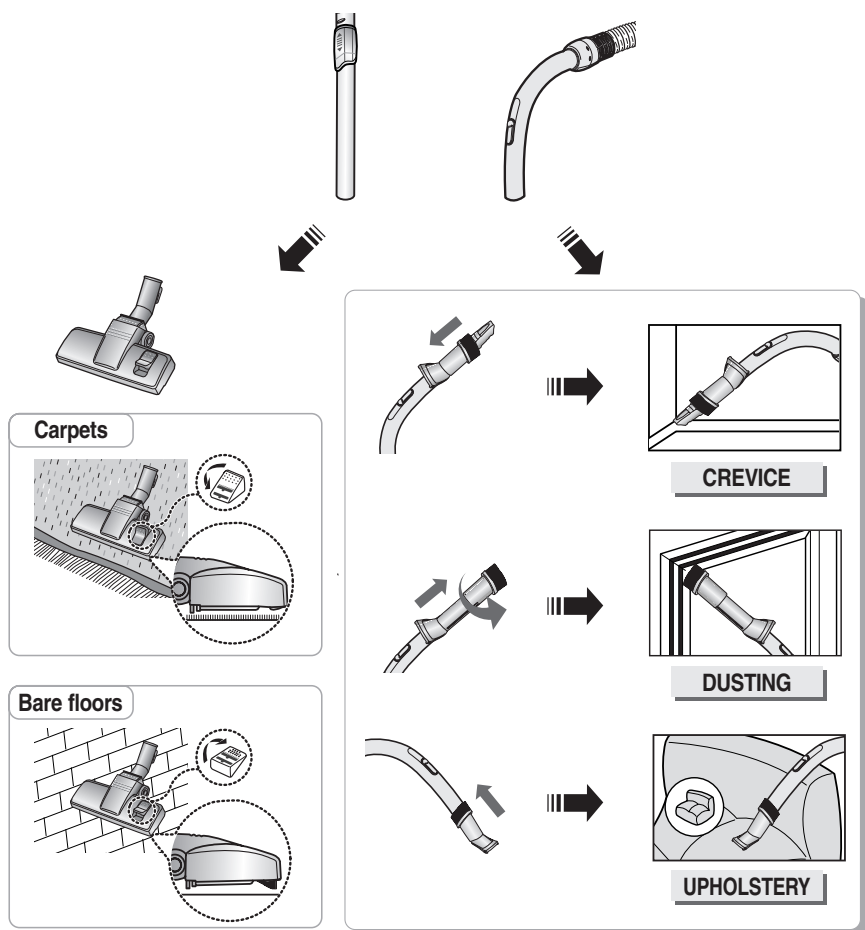
NOTE : If the cleaner is not working by handle-control you can operate the vacuum cleaner with the CONTROL-BUTTON on the body.

2-4 AIR CONTROL

To reduce suction for cleaning draperies, small rugs, and other light fabrics, pull the tap air until the hole is open.



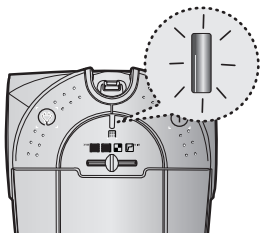
2-5 USING FLOOR TOOLS



3 INDICATOR LIGHTS (BAG TYPE)

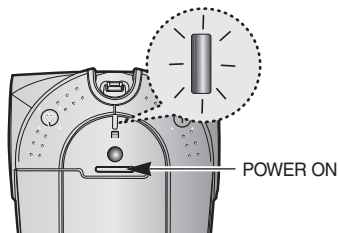
1) BODY-CONTROL TYPE

When the indicator light comes on, please change the DUST BAG(3-1) as shown in the following illustrations.



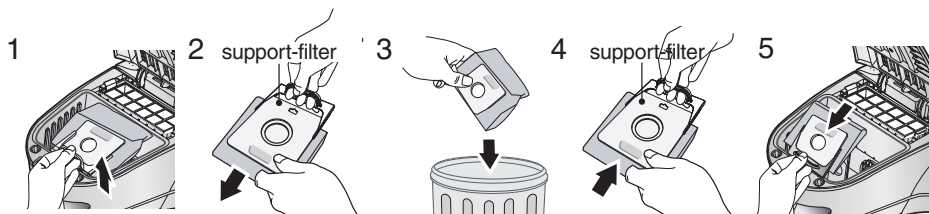
2) REMOTE-CONTROL TYPE

When the indicator light comes on, please change the DUST BAG(3-1) as shown in the following illustrations.

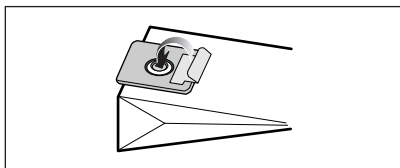


NOTE POWER LAMP ON :
The power is applied to the vacuum cleaner

3-1 CHANGING THE DUST BAG



NOTE : A used dust bag can be sealed by removing the paper from the adhesive strip and sealing the strip over the hole.



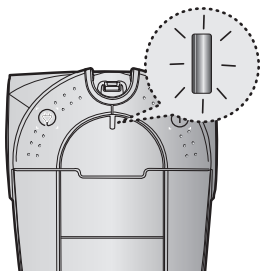
OPTIONAL

• FOR CLOTH BAG

After using, if the cloth bag is full of dust, clean the cloth bag and use it again.

NOTE : Please make sure to retain the support-filter when you dispose of the dust bag.

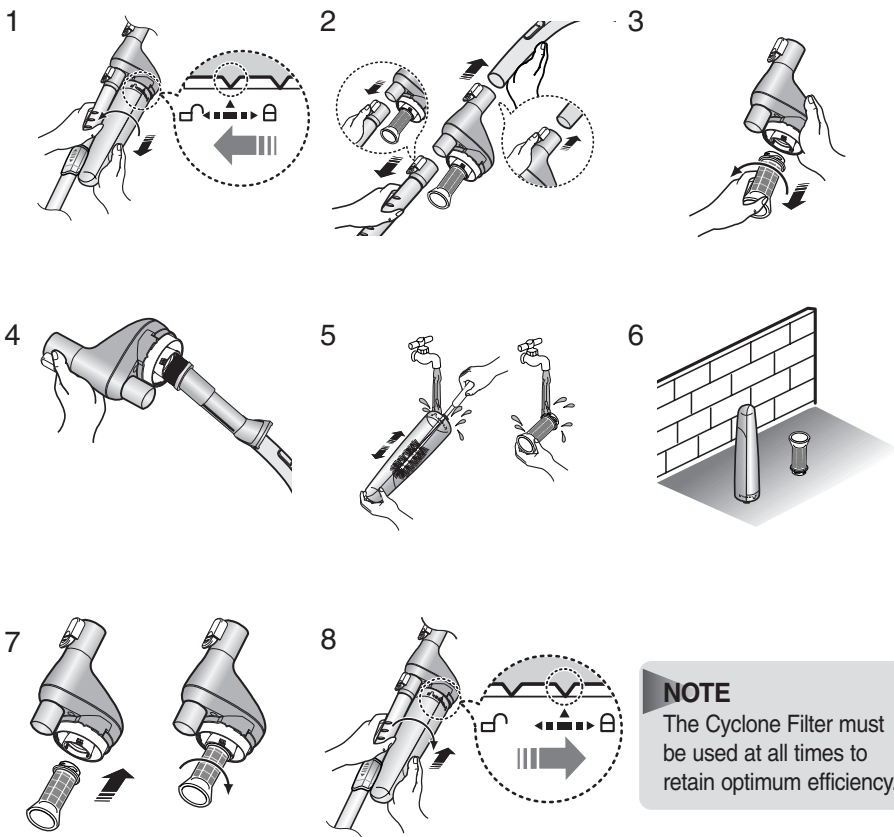
4 INDICATOR LIGHTS (CASSETTE FILTER TYPE)



OPTIONAL DIGITAL SIGNAL

When the indicator light comes on, please empty and clean the Cyclone Filter (4-1) and the cassette filter (4-2) as shown in the following illustrations.

4-1 CLEANING THE CYCLONE FILTER

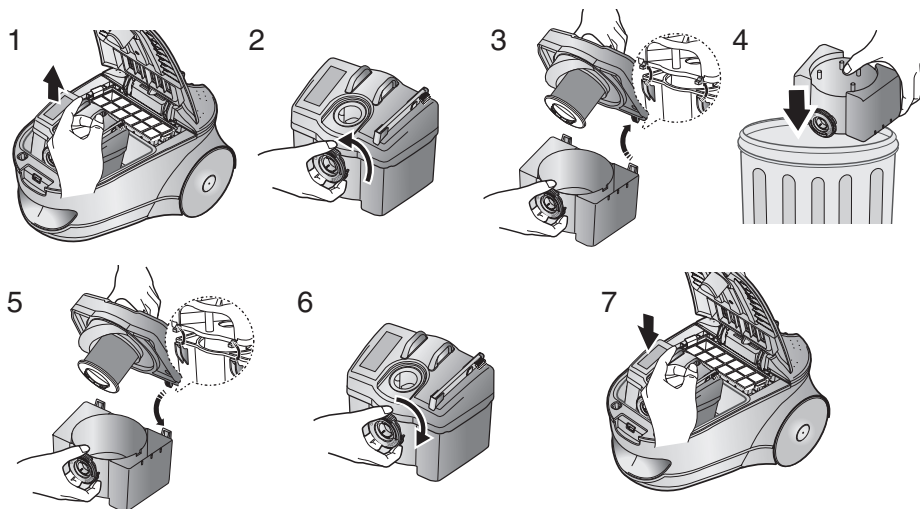


NOTE

The Cyclone Filter must be used at all times to retain optimum efficiency.

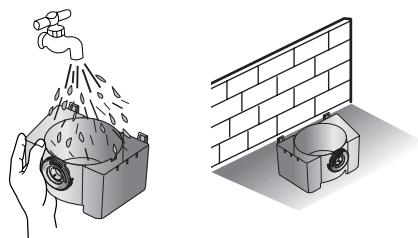
4-2 CLEANING THE CASSETTE FILTER

4-2-1 EMPTYING THE CASSETTE FILTER

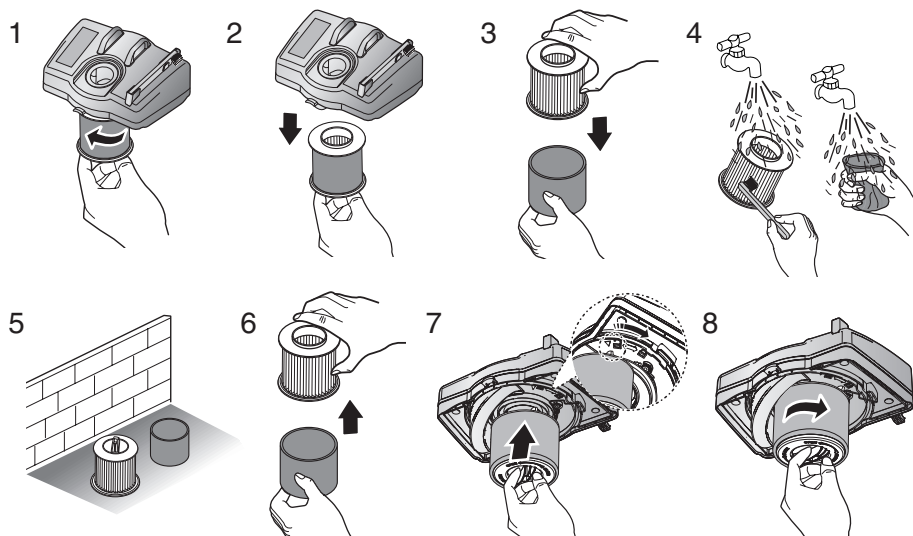


NOTE

You can rinse the cassette filter with water.
Do not immerse the whole cleaner in water.
Ensure completely dry before replacing.

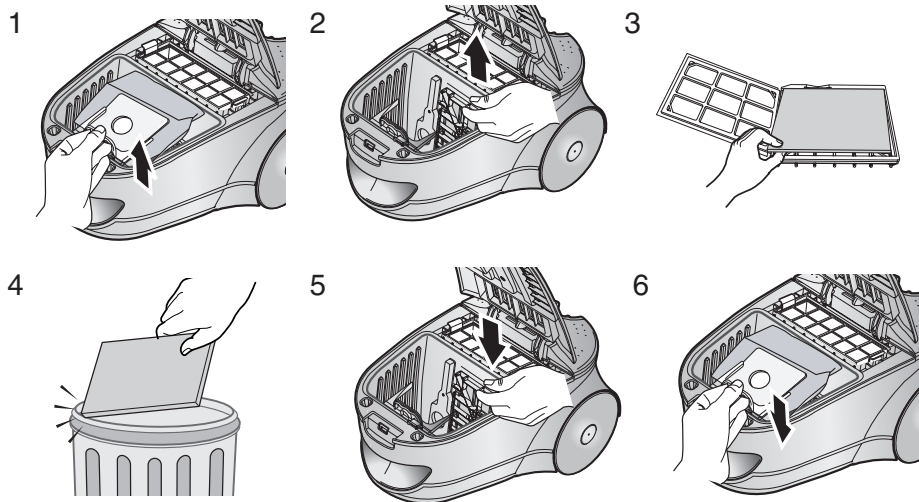


4-2-2 CLEANING THE GRILL



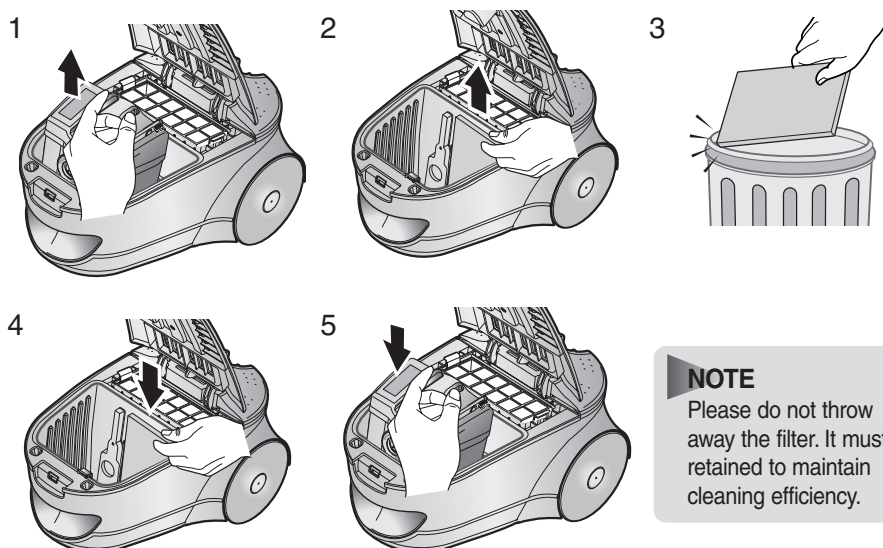
5 CLEANING THE INLET FILTER

5-1 BAG TYPE



NOTE : Please do not throw away the filter. It must be retained to maintain cleaning efficiency.

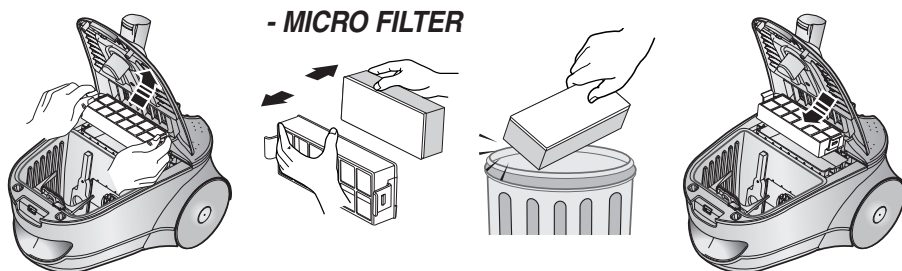
5-2 CASSETTE FILTER TYPE



NOTE

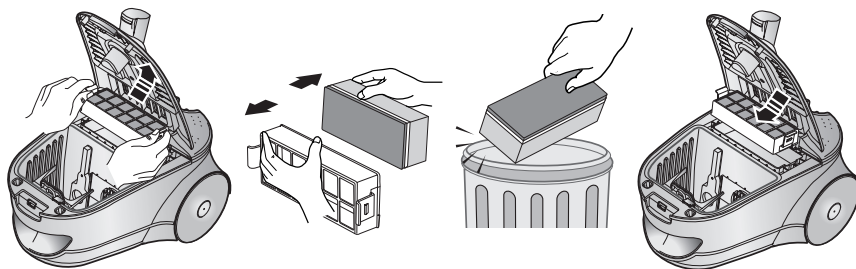
Please do not throw away the filter. It must be retained to maintain cleaning efficiency.

6 OUTLET FILTER

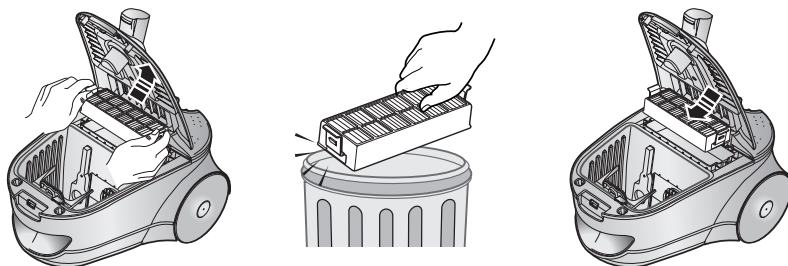


Remove and replace the blocked outlet-filter.

OPTION - CARBON FILTER

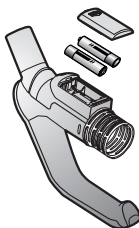


OPTION - HEPA-FILTER



NOTE : Replacement filters or bags can be bought from your local Samsung distributor.

7 CHANGE THE BATTERY(OPTIONAL)



1) BATTERY TYPE : AA Size



NOTE

1. When the vacuum cleaner does not operate, replace the batteries.
If the problem persists, please contact our authorized dealer.
2. 2 of Battery type



WARNING

1. Never disassemble or recharge the batteries.
2. Never heat up the batteries or throw them into fire.
3. Do not reverse (+),(-) terminals.
4. Dispose the batteries properly.

- IF YOU HAVE A PROBLEM

PROBLEM	CAUSE	REMEDY
Motor does not start.	No power supply. Thermal cut-out.	Check cable, plug and socket. Leave to cool.
Suction force is gradually decreasing.	Nozzle, suction hose or tube is blocked.	Check for blockage and remove.
Cord does not rewind fully.	Check that the cord is not twisted or wound unevenly.	Pull the cord out 2-3m and push down the cord rewind button.
Vacuum cleaner does not pick up dirt.	Crack or hole in hose.	Check hose and replace if required.
Low or decreasing suction	Filter is full with dust.	Please check filter and, if required, clean as illustrated in the instructions.

If you have any comments or questions regarding a Samsung products, contact the SAMSUNG customer care center.

Country	Customer Care Cente ☎	Web Site
AUSTRALIA	1300 362 603	www.samsung.com/au
HONG KONG	2862 6001	www.samsung.com/hk
MALAYSIA	1800-88-9999	www.samsung.com/my
SINGAPORE	1800-SAMSUNG (7267864)	www.samsung.com/sg