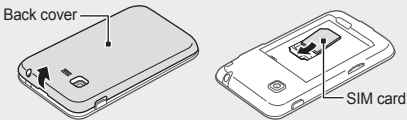


Your phone displays the following status indicators on the top of the screen:

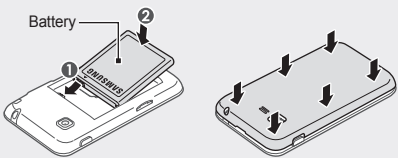
Icon	Description	Icon	Description
	Signal strength		Roaming (outside of normal service area)
	GPRS network connected		Bluetooth activated
	EDGE network connected		Wi-Fi AP activated
	Call in progress		New text message (SMS)
	Call diverting activated		New multimedia message (MMS)
	SOS message feature activated		New email message
	Alarm activated		New voice mail message
	Connecting to secured web page		Memory card inserted
	Connected to PC		Normal profile activated
	FM radio on		Silent profile activated
	FM radio suspended		Battery power level
	Music playback in progress		Current time
	Music playback paused		

Install the SIM card and battery

- Remove the back cover and insert the SIM card.



- Insert the battery and replace the back cover.

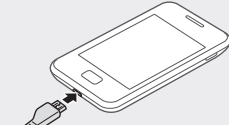


Charge the battery



If the battery is completely discharged, you cannot turn on the phone, even with the travel adapter connected. Allow a depleted battery to charge for a few minutes before you try to turn on the phone.

- Plug a travel adapter.
- When charging is finished, unplug the travel adapter.



To AC power outlet



• While the phone is charging, the touch screen may not function due to an unstable power supply. If this happens, unplug the travel adapter from the phone.

• Do not remove the battery before removing the travel adapter. Doing this may cause damage to the phone.

• To save energy, unplug the travel adapter when not in use. The travel adapter does not have a power switch, so you must unplug the travel adapter from the outlet when not in use to avoid wasting power. The travel adapter should remain close to the socket when in use.

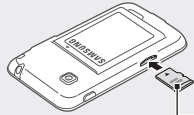
Insert a memory card (optional)

Your phone accepts microSD™ or microSDHC™ memory cards up to 16 GB (depending on memory card manufacturer and type).



- Formatting the memory card on a PC may cause incompatibility with your phone. Format the memory card only on the phone.
- Frequent writing and erasing of data will shorten the lifespan of memory cards.

- Remove the back cover.
- Insert a memory card with the gold-coloured contacts facing down.



Memory card

- Push the memory card in the memory card slot until it locks in place.
- Replace the back cover.

Use the touch screen

Learn basic actions to use the touch screen.

- To avoid scratching the touch screen, do not use sharp tools.

- For the optimal use of the touch screen, remove the protection film before using your phone.
- Your touch screen has a layer that detects small electrical charges emitted by the human body. For best performance, tap the touch screen with your fingertip. The touch screen will not react to touches of sharp tools, such as a stylus or pen.

- Tap: Touch once to select or launch a menu, option, or application.
- Tap and hold: Tap an item and hold it for more than 2 seconds.
- Drag: Tap and drag your finger up, down, left, or right to move to items on lists.
- Drag and drop: Tap and hold your finger on an item, and then drag your finger to move the item.

Access menus

To access your phone's menus,

- In Idle mode, select **Menu** to access Menu mode.
- Scroll left or right to a main menu screen.
- Select a menu or application.
- Press the Back key to move up one level; Press **[←]** to return to Idle mode.



- When you access a menu requiring the PIN2, you must enter the PIN2 supplied with the SIM card. For details, contact your service provider.
- Samsung is not responsible for any loss of passwords or private information or other damages caused by illegal software.

Make a call

- In Idle mode, select **Keypad** and enter an area code and a phone number.
- Press **[↵]** to dial the number.
- To end the call, press **[↵]**.

Answer a call

- When a call comes in, press **[↵]**.
- To end the call, press **[↵]**.

Adjust the volume

To adjust the volume of the ringtone

- In Menu mode, select **Settings** → **Sound profiles**.
- Select the profile you are using.



If you are using the silent profile, you are not allowed to adjust the volume of the ringtone.

- Select **Volume** → **Call alert**.

- Drag the slider to adjust the volume level and select **Save**.

To adjust the volume of the touch tone

In Idle mode, press the Volume key to adjust the volume.

To adjust the volume of voice during a call

While a call is in progress, press the Volume key to adjust the volume.



In noisy environments, you may have difficulty hearing some calls while using the speakerphone feature. For better audio performance, use the normal phone mode.

Change your ringtone

- In Menu mode, select **Settings** → **Sound profiles**.
- Select the profile you are using.



If you are using the silent profile, you are not allowed to change the ringtone.

Symbol mode

Press an appropriate virtual key to enter a symbol.

To use other features for text input

- To move the cursor, select **⤴** and then the virtual navigation key.
- To delete characters one by one, select **✕**. To delete words quickly, tap and hold **✕**.
- To enter punctuation marks, select **1** repeatedly.
- To start a new line, select **↵**.
- To change case, select **↑**.

Add a new contact

- The memory location to save new contacts may be preset depending on your service provider. To change the memory location, in Menu mode, select **Contacts** → **More** → **Settings** → **Save new contact to** → a memory location → **Save**.

- In Idle mode, select **Keypad** and enter a phone number.
- Select **☎** → **Create contact** → a memory location (if necessary).
- Select a number type (if necessary).
- Enter contact information.
- Select **Save** to add the contact to memory.

Send and view messages

To send a text or multimedia message

- In Menu mode, select **Messages** → **Create message**.
- Select the recipient field → **Enter manually**.
- Enter a recipient number and select **Done**.
- Select the text input field.
- Enter your message text and select **Done**.
See "Enter text."
For sending as a text message, skip to step 7. For attaching multimedia, continue with step 6.
- Select **Add media** and add an item.
- Select **Send** to send the message.

To view text or multimedia messages

- In Menu mode, select **Messages** → **Inbox**.
- Select a text or multimedia message.

Make fake calls

You can simulate an incoming call when you want to get out of meetings or unwanted conversations.

To activate the fake call feature

In Menu mode, select **Settings** → **Call** → **Fake call** → **Fake call hot key**.

Activate and send an SOS message

In an emergency, you can send SOS messages to your family or friends for help.

To activate the SOS message

- In Menu mode, select **Messages** → **Settings** → **SOS messages** → **Sending options**.
- Select **Sending SOS** to activate the SOS message feature.
- Select **Recipients** → **Add recipients** → **Contacts**. You can also enter phone numbers in the recipient list. Skip to step 6.
- Select **Multiple**.
- Select contacts → **Add**.
- When you are finished setting the recipients, select **Save** to save the recipients.
- Select **Repeat**, set the number of times to repeat the SOS message, and select **Save**.
- Press the Back key → **Yes**.

To send an SOS message

- With the touch screen and the keys locked, press the Volume key four times to send an SOS message to preset numbers.
- To exit SOS mode, press **[↵]**.

Instructional icons

	Caution: situations that could cause damage to your phone or other equipment
	Note: notes, usage tips, or additional information
	Followed by: the order of options or menus you must select to perform a step; for example: In Menu mode, select Messages → Create message (represents Messages , followed by Create message)
	Square brackets: phone keys; for example: [↵] (represents the End key)

Turn your phone on or off

To turn your phone on,

- Press and hold the Power key.
- Enter your PIN and select **OK** (if necessary).
- When the setup wizard opens, customise your phone as desired by following the screen.



If the battery remains fully discharged or removed from the phone, the time and date will be reset.

To turn your phone off, repeat step 1 above.

To organise your widget

You can organise each panel of the idle screen with your favourite widgets.

- In Idle mode, select **☰** at the top left of the screen to open the widget toolbar.
- Select a widget for each panel.

Enter text

To change the text input mode

- Select **EN** to change the input language.
- Select **T9** to switch between T9 and ABC modes. The dot turns green in T9 mode.
- Select **123** or **sym** to switch to Number or Symbol mode.

T9 mode

- Press appropriate virtual keys to enter an entire word.
- When the word displays correctly, select **↵** to insert a space. If the correct word does not display, select **☰** to select an alternate word.

ABC mode

Press an appropriate virtual key until the character you want appears on the display.

Number mode

Press an appropriate virtual key to enter a number.

Declaration of Conformity

Product details

For the following
Product : GSM BT/WiFi Mobile Phone
Model(s) : GT-S5229

CE 0168

Declaration & Applicable standards

We hereby declare, that the product above is in compliance with the essential requirements of the R&TTE Directive (1999/5/EC) by application of:

SAFETY	EN 60950-1 : 2006 + A12 : 2011
SAR	EN 50360 : 2001 / AC 2006 EN 62209-2 : 2010 EN 62479 : 2010 EN 62209-1 : 2006 EN 62311 : 2008
EMC	EN 301 489-01 V1.9.2 (09-2011) EN 301 489-17 V2.1.1 (05-2009) EN 301 489-07 V1.3.1 (11-2005)
RADIO	EN 301 511 V9.0.2 (03-2003) EN 300 328 V1.7.1 (10-2006)

and the Directive (2011/65/EU) on the restriction of the use of certain hazardous substances in electrical and electronic equipment.

The conformity assessment procedure referred to in Article 10 and detailed in Annex(V) of Directive 1999/5/EC has been followed with the involvement of the following Notified Body(ies):

TÜV SÜD BABT, Forsyth House, Churchfield Road, Walton-on-Thames, Surrey, KT12 2TD, UK*
Identification mark: 0168

Representative in the EU

Samsung Electronics Euro QA Lab,
Blackbushe Business Park, Saxony Way,
Yateley, Hampshire, GU46 6GG, UK

2012.11.29

Joong-Hoon Choi / Lab. Manager
(Name and signature of authorised person)

(Place and date of issue)

* This is not the address of Samsung Service Centre. For the address or the phone number of Samsung Service Centre, see the warranty card or contact the retailer where you purchased your product.