

SAR

www.sar-tick.com

This product meets applicable national SAR limits of 2.0 W/kg. The specific maximum SAR values can be found in the SAR information section of this manual.

When carrying the product or using it while worn on your body, either use an approved accessory such as a holster or otherwise maintain a distance of 1.5 cm from the body to ensure compliance with RF exposure requirements. Note that the product may be transmitting even if you are not making a phone call.

This safety information contains content for mobile devices. Some content may be not applicable to your device. To prevent injury to yourself and others or damage to your device, read the safety information about your device before using the device.



Warning

Failure to comply with safety warnings and regulations can cause serious injury or death

Do not use damaged power cords or plugs, or loose electrical sockets

Unsecured connections can cause electric shock or fire.

Do not touch the power cord with wet hands or disconnect the charger by pulling the cord

Doing so may result in electrocution.

Do not bend or damage the power cord

Doing so may cause electric shock or fire.

- Position your device within easy reach. Make sure you can access your wireless device without taking your eyes off the road. If you receive an incoming call at an inconvenient time, let your voicemail answer it for you.
- Suspend calls in heavy traffic or hazardous weather conditions. Rain, sleet, snow, ice, and heavy traffic can be hazardous.
- Do not take notes or look up phone numbers. Jotting down a "to do" list or flipping through your address book takes attention away from your primary responsibility of driving safely.
- Dial sensibly and assess the traffic. Place calls when you are not moving or before pulling into traffic. Try to plan calls when your car will be stationary.
- Do not engage in stressful or emotional conversations that may be distracting. Make the person you are talking to aware that you are driving and suspend conversations that could potentially divert your attention from the road.

Care and use your mobile device properly

Keep your device dry

- Humidity and liquids may damage the parts or electronic circuits in your device.
- Do not turn on your device if it is wet. If your device is already on, turn it off and remove the battery immediately (if the device will not turn off or you cannot remove the battery, leave it as-is). Then, dry the device with a towel and take it to a service centre.
- Liquids will change the colour of the label that indicates water damage inside the device. Water damage to your device can void your manufacturer's warranty.

Store your device only on flat surfaces

If your device falls, it may be damaged.

Do not store your device in very hot or very cold areas. It is recommended to use your device at temperatures from 5 °C to 35 °C

Do not use your device while it is charging or touch your device with wet hands

Doing so may cause electric shock.

Do not short-circuit the charger or the device

Doing so may cause electric shock or fire, or the battery may malfunction or explode.

Do not use your device outdoor during a thunderstorm

Doing so may result in electric shock or device malfunction.

Use manufacturer-approved batteries, chargers, accessories, and supplies

- Using generic batteries or chargers may shorten the life of your device or cause the device to malfunction. They may also cause a fire or cause the battery to explode.
- Use only Samsung-approved battery and charger specifically designed for your device. Incompatible battery and charger can cause serious injuries or damage to your device.
- Samsung cannot be responsible for the user's safety when using accessories or supplies that are not approved by Samsung.

Do not drop or cause an impact to the charger or the device

Handle and dispose of the device and charger with care

- Never dispose of the battery or device in a fire. Never place the battery or device on or in heating devices, such as microwave ovens, stoves, or radiators. The device may explode when overheated. Follow all local regulations when disposing of used battery or device.
- Never crush or puncture the device.
- Avoid exposing the device to high external pressure, which can lead to an internal short circuit and overheating.

Protect the device, battery and charger from damage

- Avoid exposing your device and battery to very cold or very hot temperatures.

- Do not store your device in very hot areas such as inside a car in the summertime. Doing so may cause the screen to malfunction, result in damage to the device, or cause the battery to explode.
- Do not expose your device to direct sunlight for extended periods of time (on the dashboard of a car, for example).
- Store the battery at temperatures from 0 °C to 45 °C.

Do not store your device with metal objects, such as coins, keys, and necklaces

- Your device may be scratched or may malfunction.
- If the battery terminals come into contact with metal objects, this may cause a fire.

Do not store your device near magnetic fields

- Your device may malfunction or the battery may discharge from exposure to magnetic fields.
- Magnetic stripe cards, including credit cards, phone cards, passbooks, and boarding passes, may be damaged by magnetic fields.

Do not use your device or applications for a while if the device is overheated

Prolonged exposure of your skin to an overheated device may cause low temperature burn symptoms, such as red spots and pigmentation.

Do not use your device with the back cover removed

The battery may fall out of the device, which may result in damage or malfunction.

If your device has a camera flash or light, do not use it close to the eyes of people or pets

Using a flash close to the eyes may cause temporary loss of vision or damage to the eyes.

Use caution when exposed to flashing lights

- While using your device, leave some lights on in the room and do not hold the screen too close to your eyes.
- Seizures or blackouts can occur when you are exposed to flashing lights while watching videos or playing Flash-based games for extended periods. If you feel any discomfort, stop using the device immediately.

- In the event your device is lost or stolen, change the passwords on your accounts to protect your personal information.
- Avoid using applications from unknown sources and lock your device with a pattern, password, or PIN.

Do not distribute copyright-protected material

Do not distribute copyright-protected material without the permission of the content owners. Doing this may violate copyright laws. The manufacturer is not liable for any legal issues caused by the user's illegal use of copyrighted material.

Malware and viruses

To protect your device from malware and viruses, follow these usage tips. Failure to do so may result in damages or loss of data that may not be covered by the warranty service

- Do not download unknown applications.
- Do not visit untrusted websites.
- Delete suspicious messages or email from unknown senders.
- Set a password and change it regularly.
- Deactivate wireless features, such as Bluetooth, when not in use.
- If the device behaves abnormally, run an antivirus program to check for infection.
- Run an antivirus program on your device before you launch newly downloaded applications and files.
- Install antivirus programs on your computer and run them regularly to check for infection.
- Do not edit registry settings or modify the device's operating system.

Specific Absorption Rate (SAR) certification information

THIS DEVICE MEETS INTERNATIONAL GUIDELINES FOR EXPOSURE TO RADIO WAVES

- Check your accounts regularly for unapproved or suspicious use. If you find any sign of misuse of your personal information, contact your service provider to delete or change your account information.

- Extreme temperatures can damage the device and reduce the charging capacity and life of your device and battery.
- Prevent the battery from coming into contact with metal objects, as this can create a connection between the + and – terminals of your battery and lead to temporary or permanent battery damage.
- Never use a damaged charger or battery.

Do not store your device near or in heaters, microwaves, hot cooking equipment, or high pressure containers

- The battery may leak.
- Your device may overheat and cause a fire.

Do not use or store your device in areas with high concentrations of dust or airborne materials

Dust or foreign materials can cause your device to malfunction and may result in fire or electric shock.

Do not bite or suck the device or the battery

- Doing so may damage the device or result in an explosion or fire.
- Children or animals can choke on small parts.
- If children use the device, make sure that they use the device properly.

Do not insert the device or supplied accessories into the eyes, ears, or mouth

Doing so may cause suffocation or serious injuries.

Do not handle a damaged or leaking Lithium Ion (Li-Ion) battery

For safe disposal of your Li-Ion battery, contact your nearest authorised service centre.



Caution

Failure to comply with safety cautions and regulations can cause injury or property damage

Do not use your device near other electronic devices

- Most electronic devices use radio frequency signals. Your device may interfere with other electronic devices.
- Using an LTE data connection may cause interference with other devices, such as audio equipment and telephones.

Do not use your device in a hospital, on an aircraft, or in an automotive equipment that can be interfered with by radio frequency

- Avoid using your device within a 15 cm range of a pacemaker, if possible, as your device can interfere with the pacemaker.
- To minimise possible interference with a pacemaker, use your device only on the side of your body that is opposite the pacemaker.
- If you use medical equipment, contact the equipment manufacturer before using your device to determine whether or not the equipment will be affected by radio frequencies emitted by the device.
- On an aircraft, using electronic devices can interfere with the aircraft's electronic navigational instruments. Make sure the device is turned off during takeoff and landing. After takeoff, you can use the device in flight mode if allowed by aircraft personnel.
- Electronic devices in your car may malfunction, due to radio interference from your device. Contact the manufacturer for more information.

Do not expose the device to heavy smoke or fumes

Doing so may damage the outside of the device or cause it to malfunction.

Do not carry your device in your back pockets or around your waist

You could be injured or damage the device if you fall.

Do not paint or put stickers on your device

- Paint and stickers can clog moving parts and prevent proper operation.
- If you are allergic to paint or metal parts of the device, you may experience itching, eczema, or swelling of the skin. When this happens, stop using the device and consult your physician.

Do not use the device if the screen is cracked or broken

Broken glass or acrylic could cause injury to your hands and face. Take the device to a Samsung Service Centre to have it repaired.

Install mobile devices and equipment with caution

- Ensure that any mobile devices or related equipment installed in your vehicle are securely mounted.
- Avoid placing your device and accessories near or in an airbag deployment area. Improperly installed wireless equipment can cause serious injury when airbags inflate rapidly.

Do not drop your device or cause impacts to your device

- Your device may be damaged or may malfunction.
- If bent or deformed, your device may be damaged or parts may malfunction.

Ensure maximum battery and charger life

- Avoid charging your device for more than a week, as overcharging may shorten battery life.
- Over time, unused device will discharge and must be recharged before use.
- Disconnect the charger from power sources when not in use.
- Use the battery only for their intended purposes.
- Leaving batteries unused over time may reduce their lifespan and performance. It may also cause the batteries to malfunction or explode, or cause a fire.

Correct disposal of this product

(Waste Electrical & Electronic Equipment)



(Applicable in countries with separate collection systems) This marking on the product, accessories or literature indicates that the product and its electronic accessories (e.g. charger, headset, USB cable) should not be disposed of with other household waste.

To prevent possible harm to the environment or human health from uncontrolled waste disposal, please separate these items from other types of waste and recycle them responsibly to promote the sustainable reuse of material resources.

Household users should contact either the retailer where they purchased this product, or their local government office, for details of where and how they can take these items for environmentally safe recycling.

Business users should contact their supplier and check the terms and conditions of the purchase contract. This product and its electronic accessories should not be mixed with other commercial wastes for disposal.

This EEE is compliant with RoHS.

Correct disposal of batteries in this product



(Applicable in countries with separate collection systems) This marking on the battery, manual or packaging indicates that the batteries in this product should not be disposed of with other household waste. Where marked, the chemical symbols Hg, Cd or Pb indicate that the battery contains mercury, cadmium or lead above the reference levels in EC Directive 2006/66. If batteries are not properly disposed of, these substances can cause harm to human health or the environment.

To protect natural resources and to promote material reuse, please separate batteries from other types of waste and recycle them through your local, free battery return system.

- Some of the contents in this manual may differ from your phone depending on the software of the phone or your service provider.
- Third party services may be terminated or interrupted at any time, and Samsung makes no representation or warranty that any content or service will remain available for any period of time.
- This product includes certain free/open source software. The exact terms of the licences, disclaimers, acknowledgements and notices are available on the Samsung's website opensource.samsung.com.

www.samsung.com

Printed in Korea
GH68-39004B
English (EU). 04/2013. Rev. 1.0



If you use a hearing aid, contact the manufacturer for information about radio interference

The radio frequency emitted by your device may interfere with some hearing aids. Before using your device, contact the manufacturer to determine whether or not your hearing aid will be affected by radio frequencies emitted by the device.

Do not use your device near devices or apparatuses that emit radio frequencies, such as sound systems or radio towers

Radio frequencies may cause your device to malfunction.

Turn off the device in potentially explosive environments

- Turn off your device in potentially explosive environments instead of removing the battery.
- Always comply with regulations, instructions and signs in potentially explosive environments.
- Do not use your device at refuelling points (petrol stations), near fuels or chemicals, or in blasting areas.
- Do not store or carry flammable liquids, gases, or explosive materials in the same compartment as the device, its parts, or accessories.

If you notice strange smells or sounds coming from your device or the battery, or if you see smoke or liquids leaking from the device or battery, stop using the device immediately and take it to a Samsung Service Centre

Failure to do so may result in fire or explosion.

Comply with all safety warnings and regulations regarding mobile device usage while operating a vehicle

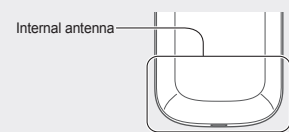
While driving, safely operating the vehicle is your first responsibility. Never use your mobile device while driving, if it is prohibited by law. For your safety and the safety of others, use your common sense and remember the following tips:

- Get to know your device and its convenience features, such as speed dial and redial. These features help you reduce the time needed to place or receive calls on your mobile device.

- Follow all instructions in this manual to ensure the longest lifespan of your device and battery. Damages or poor performance caused by failure to follow warnings and instructions can void your manufacturer's warranty.
- Your device may wear out over time. Some parts and repairs are covered by the warranty within the validity period, but damages or deterioration caused by using unapproved accessories are not.

When using the device, mind the following

- Hold the device upright, as you would with a traditional phone.
- Speak directly into the microphone.
- Do not cover the antenna area with your hands or other objects. This may cause connectivity problems or drain the battery.



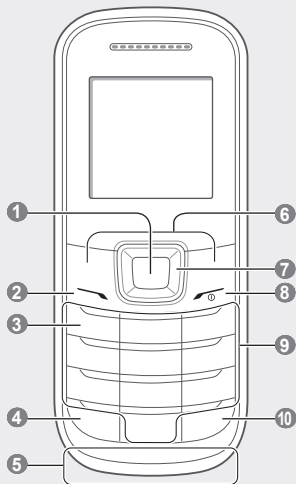
Do not disassemble, modify, or repair your device

- Any changes or modifications to your device can void your manufacturer's warranty. If your device needs servicing, take your device to a Samsung Service Centre.
- Do not disassemble or puncture the battery, as this can cause explosion or fire.
- Turn off the device before removing the battery. If you remove the battery with the device turned on, it may cause the device to malfunction.

When cleaning your device, mind the following

- Wipe your device or charger with a towel or an eraser.
- Clean the battery terminals with a cotton ball or a towel.
- Do not use chemicals or detergents. Doing so may discolour or corrode the outside the device or may result in electric shock or fire.

Phone layout



1

Confirm key

Select the highlighted menu option or confirm an input; In Idle mode, access Menu mode

Depending on your service provider or region, the key may perform differently

2

Dial key

Make or answer a call; In Idle mode, retrieve logs of your calls and messages; Send an SOS message
See "Activate and send an SOS message"

3

Voice mail service key

In Idle mode, access voice mails (press and hold)

4

Keypad lock key

In Idle mode, lock or unlock the keypad (press and hold)

5

Internal antenna

6

Softkeys

Perform actions indicated at the bottom of the display

7

4-way navigation key

In Idle mode, access user-defined menus (depending on your service provider, pre-defined menus may differ), and make a fake call (down); In Menu mode, scroll through menu options
See "Make fake calls"

8

Power/End key

Turn the phone on and off (press and hold); End a call; In Menu mode, cancel input and return to Idle mode

9

Alphanumeric key

10

Silent profile key

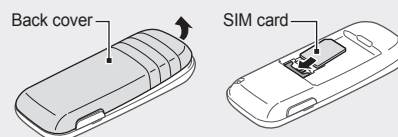
In Idle mode, activate or deactivate the silent profile (press and hold)

Your phone displays the following status indicators on the top of the screen:

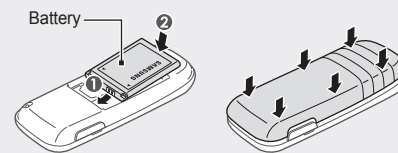
Icon	Description
	Signal strength
	Call in progress
	Call diverting activated
	SOS message feature activated
	Alarm activated
	Roaming (outside of normal service area)
	New text message (SMS)
	New voice mail message
	Normal profile activated
	Silent profile activated
	Battery power level

Install the SIM card and battery

1. Remove the back cover and battery and insert the SIM card.



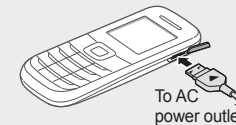
2. Insert the battery and replace the back cover.



Charge the battery

If the battery is completely discharged, you cannot turn on the phone, even with the travel adapter connected. Allow a depleted battery to charge for a few minutes before you try to turn on the phone.

1. Plug a travel adapter.
2. When charging is finished, unplug the travel adapter.



- Do not remove the battery before removing the travel adapter. Doing this may cause damage to the phone.
- To save energy, unplug the travel adapter when not in use. The travel adapter does not have a power switch, so you must unplug the travel adapter from the outlet when not in use to avoid wasting power. The travel adapter should remain close to the socket when in use.

Instructional icons

	Note: notes, usage tips, or additional information
	Followed by: the order of options or menus you must select to perform a step; for example: In Menu mode, select Messages → Create message (represents Messages , followed by Create message)
	Square brackets: phone keys; for example: [] (represents the Power/End key)
	Angled brackets: softkeys that control different functions at each screen; for example: < Save > (represents the Save softkey)

Turn your phone on or off

To turn your phone on,

1. Press and hold [].
2. Enter your PIN and press <**OK**> (if necessary).
3. When the setup wizard opens, customise your phone as desired by following the screen.

If the battery remains fully discharged or removed from the phone, the time and date will be reset.

To turn your phone off, repeat step 1 above.

Access menus

To access your phone's menus,

1. In Idle mode, press <**Menu**> to access Menu mode.



You may need to press the Confirm key to access Menu mode depending on your region or service provider.

2. Use the Navigation key to scroll to a menu or option.
3. Press <**Select**> or the Confirm key to confirm the highlighted option.
4. Press <**Back**> to move up one level; Press [] to return to Idle mode.



- When you access a menu requiring the PIN2, you must enter the PIN2 supplied with the SIM card. For details, contact your service provider.
- Samsung is not responsible for any loss of passwords or private information or other damages caused by illegal software.

Make a call

1. In Idle mode, enter an area code and a phone number.
2. Press [] to dial the number.
3. To end the call, press [].

Answer a call

1. When a call comes in, press [].
2. To end the call, press [].

Adjust the volume

To adjust the volume of the ringtone

1. In Menu mode, select **Settings** → **Profiles**.
2. Scroll to the profile you are using.



If you are using the silent or offline profile, you are not allowed to adjust the volume of the ringtone.

3. Press <**Options**> → **Edit**.
4. Select **Volume**.
5. Scroll to **Call alert**.
6. Scroll left or right to adjust the volume level and press <**Save**>.

To adjust the volume of voice during a call

While a call is in progress, press the Navigation key up or down to adjust the volume.



In noisy environments, you may have difficulty hearing some calls while using the speakerphone feature. For better audio performance, use the normal phone mode.

Change your ringtone

1. In Menu mode, select **Settings** → **Profiles**.
2. Scroll to the profile you are using.



If you are using the silent, meeting, or offline profile, you are not allowed to change the ringtone.

3. Press <**Options**> → **Edit**.
4. Select **Call ringtone**.
5. Select a ringtone.

To switch to another profile, select it from the list.

Call a recently dialled number

1. In Idle mode, press [].
2. Scroll left or right to a call type.
3. Scroll up or down to a number or name.
4. Press the Confirm key to view details of the call or [] to dial the number.

Enter text

To change the text input mode

- Press and hold [#] to switch between T9 and ABC modes. Depending on your region, you may be able to access an input mode for your specific language.
- Press [#] to change case or switch to Number mode.
- Press [*] to switch to Symbol mode.
- Press and hold [*] to select an input mode or change the input language.

Add a new contact



The memory location to save new contacts may be preset depending on your service provider. To change the memory location, in Menu mode, select **Contacts** → **Management** → **Save new contacts to** → a memory location.

1. In Idle mode, enter a phone number and press <**Options**>.
2. Select **Create contact**.
3. Select a number type (if necessary).
4. Enter contact information.
5. Press the Confirm key to add the contact to memory.

Send and view messages

To send a text message

1. In Menu mode, select **Messages** → **Create message**.
2. Enter a recipient number and scroll down.
3. Enter your message text. *See "Enter text."*
4. Press the Confirm key to send the message.

To view text messages

1. In Menu mode, select **Messages** → **Inbox**.
2. Select a text message.

Make fake calls

You can simulate an incoming call when you want to get out of meetings or unwanted conversations.

To activate the fake call feature

In Menu mode, select **Settings** → **Applications** → **Call** → **Fake call** → **Fake call hot key** → **On**.

To make a fake call

- In Idle mode, press and hold the Navigation key down.
- When the keys are locked, press the Navigation key down four times.

Activate the mobile tracker

When someone inserts a new SIM card in your phone, the mobile tracker feature will automatically send the contact number to specified recipients to help you locate and recover your phone. To activate the mobile tracker,

1. In Menu mode, select **Settings** → **Security** → **Mobile tracker**.

2. Enter your password and press <**OK**>.



The first time you access **Mobile tracker**, you will be prompted to create and confirm a password.

3. Press the Confirm key to select **On**.
4. Scroll down and press the Confirm key to open the recipient list.

5. Press <**Options**> → **Contact list** to open your contact list.
You can also enter phone numbers including a country code (with +) in the recipient list. Skip to step 8.
6. Select a contact.
7. Select a number (if necessary).
8. When you are finished setting contacts, press the Confirm key to save the recipients.
9. Scroll down and enter the sender's name.
10. Press the Confirm key → <**Accept**>.

Activate and send an SOS message

In an emergency, you can send SOS messages to your family or friends for help.

To activate the SOS message

1. In Menu mode, select **Messages** → **Settings** → **SOS messages** → **Sending options**.
2. Press the Confirm key to select **On**.
3. Scroll down and press the Confirm key to open the recipient list.
4. Press <**Options**> → **Contact list** to open your contact list.
You can also enter phone numbers in the recipient list. Skip to step 7.

Declaration of Conformity

Product details
For the following
Product : GSM Mobile Phone
Model(s) : GT-E1200I

CE 0168

Declaration & Applicable standards
We hereby declare, that the product above is in compliance with the essential requirements of the R&TTE Directive (1999/5/EC) by application of:

SAFETY	EN 60950-1 : 2006 +A12 : 2011
SAR	EN 50360 : 2001 / A1 : 2012 EN 62311 : 2008 EN 62209-1 : 2006 EN 62209-2 : 2010
EMC	EN 301 489-01 V1.9.2 (09-2011) EN 301 489-07 V1.3.1 (11-2005)
RADIO	EN 301 511 V9.0.2 (03-2003)

and the Directive (2011/65/EU) on the restriction of the use of certain hazardous substances in electrical and electronic equipment.

The conformity assessment procedure referred to in Article 10 and detailed in Annex[IV] of Directive 1999/5/EC has been followed with the involvement of the following Notified Body(ies):

TÜV SÜD BABT, Octagon House, Concorde Way, Fareham, Hampshire, PO15 5RL, UK*
Identification mark: 0168

Representative in the EU
Samsung Electronics Euro QA Lab.
Blackbushe Business Park, Saxony Way,
Yateley, Hampshire, GU46 6GG, UK
2013.04.01
(Place and date of issue)

Joong-Hoon Choi / Lab. Manager
(Name and signature of authorised person)

* This is not the address of Samsung Service Centre. For the address or the phone number of Samsung Service Centre, see the warranty card or contact the retailer where you purchased your product.