

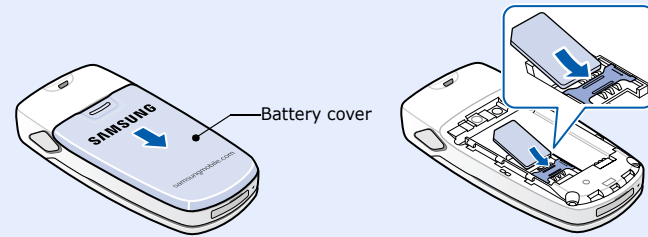
- Depending on the software installed or your service provider or country, some of the descriptions in this guide may not match your phone exactly.
- Depending on your country, your phone and accessories may appear different from the illustrations in this guide.
- Bluetooth QD ID: B012418

World Wide Web
http://www.samsungmobile.com

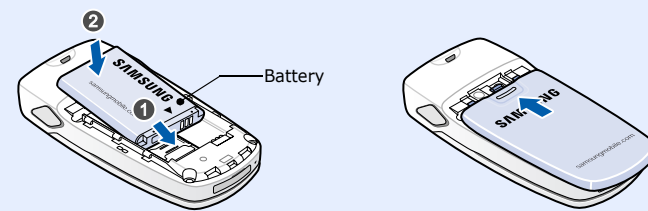
Printed in Korea
Code No.: GH68-12952A
English (EU). 05/2007. Rev.1.0

Installing the SIM card and battery

1. Remove the battery cover and insert the SIM card.

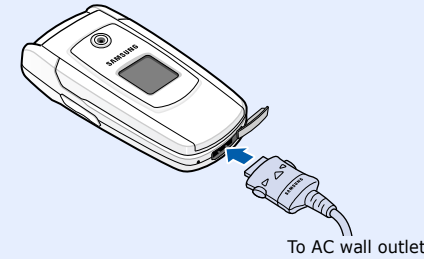


2. Install the battery and reattach the cover.

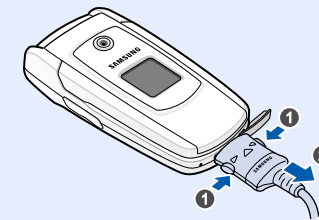


Charging the battery

1. Plug the supplied travel adapter.

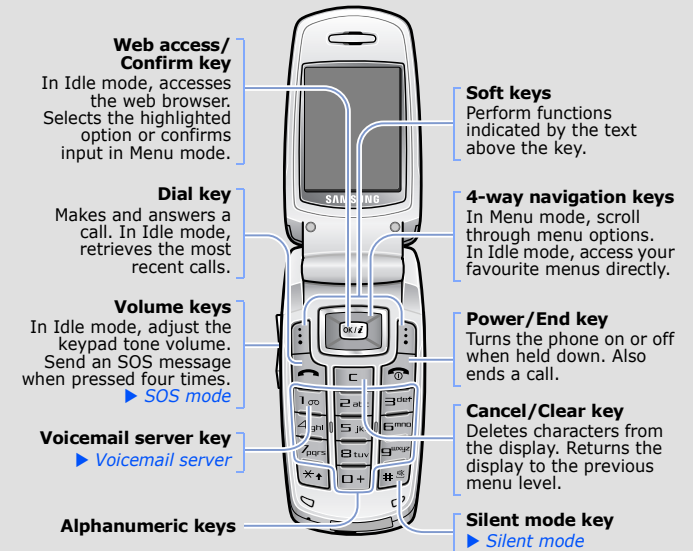


2. When charging is finished, unplug the adapter.



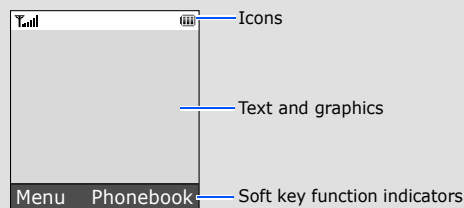
Note: Do not remove the battery from the phone without unplugging the adapter first. Otherwise, the phone may be damaged.

Phone layout and key functions



Display

Your phone is in Idle mode when you are not on a call or using a menu. You must be in Idle mode to dial a phone number.



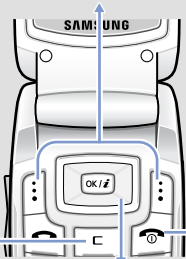
Your phone displays the following status indicators on the top of the screen:

Icon	Description
[Signal strength icon]	Received signal strength
[Call in progress icon]	Call in progress
[Out of service icon]	Out of your service area; you cannot make or receive calls except for emergency calls
[SOS message icon]	SOS message feature active
[GPRS network icon]	GPRS network
[Call diverting icon]	Call diverting feature active
[Bluetooth active icon]	Bluetooth active
[Bluetooth hands-free icon]	Bluetooth hands-free car kit or headset connected
[Alarm set icon]	Alarm set
[New text message icon]	New text message
[New multimedia message icon]	New multimedia message
[New voicemail message icon]	New voicemail message
[Alert type icon]	Alert type <ul style="list-style-type: none"> None: Melody [Vibration icon]: Vibration [Vibration then melody icon]: Vibration then melody
[Silent mode icon]	Silent mode
[Battery power level icon]	Battery power level

Using the menus

In Idle mode, press the **Menu** soft key to enter the main menu.

Labels at the bottom corners of the display show the current soft key functions. Press the left soft key (Back) or right soft key (C) to perform the function indicated.



To return to the previous menu level, press the **Back** soft key or **C**.

Use the 4-way navigation keys to scroll up, down, left, or right through the menu system, highlight menu items, change feature settings, and play games.

To select or modify a menu or feature:

- In Idle mode, press the **Menu** soft key.
- Press the Navigation keys to reach a desired menu and then press the **Select** soft key or **OK**.
- If the menu contains any submenus, locate the one you want by pressing the Navigation keys. Press the **Select** soft key or **OK** to enter the submenu. If the selected menu contains additional submenus, repeat this step.
- Press the Navigation keys to find the setting of your choice.
- Press the **Select** soft key or **OK** to confirm your chosen setting.

Shortcut numbers

You can quickly access the menu you want by using shortcut numbers. The shortcut number displays in front of the menu name in Menu mode.

Menu map

- | | | |
|--|--|---|
| 1. Call log
1.1 Missed calls
1.2 Received calls
1.3 Dialed calls
1.4 Delete all
1.5 Call time
1.6 Call costs* | 5. Messages
5.1 Text messages
5.2 Multimedia messages
5.3 Push messages
5.4 Preset messages
5.5 Voice mail
5.6 Broadcast
5.7 Settings
5.8 SOS messages
5.9 Memory status | 8.2 My photos
8.3 Delete all
8.4 Settings
8.5 Memory status |
| 2. Network services
2.1 Call diverting
2.2 Call barring
2.3 Call waiting
2.4 Network selection
2.5 Caller ID
2.6 Band selection | 6. Fun box
6.1 WWW services
6.2 Media box
6.3 JAVA world | 9. Phone settings
9.1 Display
9.2 Greeting message
9.3 Language
9.4 Offline mode
9.5 Security
9.6 Auto redial
9.7 Voice clarity
9.8 Anykey answer
9.9 Active folder
9.10 Volume key
9.11 Reset settings |
| 3. Applications
3.1 Voice recorder
3.2 Bluetooth
3.3 SIM-AT* | 7. Planner
7.1 New memo
7.2 Calendar
7.3 To do list
7.4 Clock
7.5 Alarm
7.6 Calculator
7.7 Converter
7.8 Timer
7.9 Stopwatch | Press the Phonebook soft key in Idle mode.
1 Find name
2 FDN list
3 Add entry
4 Speed-dial list
5 Own number
6 Group setting
7 Management
8 Service directory* |
| 4. Sound settings
4.1 Incoming calls
4.2 Messages
4.3 Power on/off
4.4 Connection tone
4.5 Keypad tone
4.6 Minute minder
4.7 Silent mode
4.8 Alerts on call | 8. Camera
8.1 Take photo | * Show only if supported by your SIM card. |

Adjusting the volume

- In Idle mode, press the **Menu** soft key.
- Select **Sound settings** → **Incoming calls** → **Ring volume**.
- Press the Navigation keys to adjust the volume level.
- Press the **Save** soft key.

While a call is in progress, press the Volume keys to adjust the earpiece volume.

Changing a ringtone for calls

- In Idle mode, press the **Menu** soft key.
- Select **Sound settings** → **Incoming calls** → **Default ringtones** or **My sounds**.
- Select a ringtone and press the **Yes** soft key.

Redialling recent numbers

- In Idle mode, press **Up**.
- Press **Up** or **Down** to scroll to the number you want.
- Press **OK** to dial the number.

Entering text

Changing the text input mode

In a text input field, press the right soft key until the input mode indicator you want appears:

- [T9] T9 mode
- [ABC] ABC mode
- [123] Number mode
- [None] Symbol mode

T9 mode

- Press **2** to **9** to start entering a word. Press each key once for one letter. The word you are entering appears on the display. It may change with each keypress. Finish entering the word before editing or deleting any keystrokes.

Example: To enter "Hello" in English word mode, press **4, 3, 5, 5, and 6**.

- Press **#** to insert a space and enter the next word.

ABC mode

Press the keys labelled with the letter you want once for the first letter, twice for the second letter, and so on.

For example, press **2** three times to enter "C" and **5** two times to enter "K."

Number mode

Press the keys corresponding to the digits you want.

Symbol mode

Press the number keys corresponding to the symbol you want and press the **OK** soft key. You can press **Up** or **Down** to display more symbols.

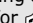
Tips for entering text

- To move the cursor, press the Navigation keys.
- To delete characters one by one, press **C**. To delete all of the characters, press and hold **C**.
- To insert a space between characters, press **#**.
- To change case in T9 mode or ABC mode, press *****.
- To enter punctuation marks in T9 mode or ABC mode, press **1**.

Sending an SMS message

- In Idle mode, press **Left**.
- Enter the message text.
- Press the **Options** soft key and add items using the following options:
 - Add media**: add sounds, images, or animated images.
 - Add emoticon**: add emoticons.
 - Preset messages**: add text templates.
- Press the **Options** soft key and select **Send**.
- Select an empty location.
- Enter a destination number and press the **OK** soft key.
- Press the **Send** soft key to send the message.

Feature	Description	Select
Silent mode	Set how the phone acts to alert you to a specific event while in Silent mode.	Menu > Sound settings > Silent mode
Alerts on call	Set the phone to alert you when you receive a new message or when the time for an alarm comes during a call.	Menu > Sound settings > Alerts on call
Send SMS or MMS messages	Create and send messages to other mobile phones.	Menu > Messages > Text messages or Multimedia messages > Create
Read SMS or MMS messages	Read received, sent, or saved messages.	Menu > Messages > Text messages or Multimedia messages > Inbox, Outbox, Draft, or My folder
Emoticon templates	Preset templates of frequently used emoticons.	Menu > Messages > Text messages > Emoticon templates
Delete messages	Delete messages in each message box, or all messages at once.	Menu > Messages > Text messages or Multimedia messages > Delete all
Push message	Change the settings for the service, and access or delete push messages.	Menu > Messages > Push messages

Feature	Description	Select
Voice clarity	Remove extraneous noise and increase call quality so that the person can hear you clearly.	Menu > Phone settings > Voice clarity
Anykey answer	Answer an incoming call by pressing any key, except for  .	Menu > Phone settings > Anykey answer
Active folder	Answer an incoming call by opening the phone.	Menu > Phone settings > Active folder
Volume key	Set whether the phone mutes the call ringer or rejects a call if you press and hold the Volume keys when a call comes in.	Menu > Phone settings > Volume key
Reset the phone	Reset the phone to the factory default settings.	Menu > Phone settings > Reset settings

Important safety precautions

Read these guidelines before using your wireless phone. Failure to comply with them may be dangerous or illegal.

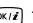
Drive safely at all times

Do not use a hand-held phone while driving; park your vehicle first.

Switching off when refuelling

Do not use the phone at a refuelling point (service station) or near fuels or chemicals.

Taking a photo

- In Idle mode, press **Up** and select **Take photo**.
- Aim the lens at the subject and make any desired adjustments.
- Press  to take a photo.
- Press **C** to take another photo.

Quick feature reference

This section provides brief explanations of features on your phone.

Feature	Description	Select
Find a contact	Search for contacts in Phonebook.	Phonebook > Find name
Create an FDN list	Create a list of contacts to be used in FDN (Fixed Dialling Number) mode, in which the phone allows outgoing calls only to the specified phone numbers.	Phonebook > FDN list
Add a new contact	Add a new contact to Phonebook.	Phonebook > Add entry
Speed dial	Assign speed dial numbers (2 to 9) for eight of your most frequently dialled numbers.	Phonebook > Speed-dial list
Check your own phone numbers	Check your phone numbers or assign a name to them.	Phonebook > Own number

Feature	Description	Select
Message templates	Preset templates of frequently used messages.	Menu > Messages > Preset messages
Voicemail	Access your voicemail server and listen to messages on the network.	Menu > Messages > Voice mail
Broadcast message	Change settings for the service and access broadcast messages.	Menu > Messages > Broadcast
Messaging options	Set options for using messaging services.	Menu > Messages > Settings
SOS message	Activate the SOS message feature. Enter recipients and select the repeat mode.	Menu > Messages > SOS messages
Message memory status	Check memory information for messages.	Menu > Messages > Memory status
Web browser	Launch and configure the web browser.	Menu > Fun box > WWW services
Access media files	Access sounds or images in your phone's memory.	Menu > Fun box > Media box > My photos, Downloaded images, or Sounds
Delete all media files	Delete sounds and images in each media box, or all media files at once.	Menu > Fun box > Media box > Delete all
Funbox memory status	Check the amount of memory in use for games, sounds and images.	Menu > Fun box > Media box > Memory status

Switching off in an aircraft

Wireless phones can cause interference. Using them in an aircraft is both illegal and dangerous.

Switching off near all medical equipment

Hospitals and health care facilities may be using equipment that could be sensitive to external RF energy. Follow any regulations or rules in force.

Interference

All wireless phones may be subject to interference, which could affect their performance.

Special regulations

Follow any special regulations in force in any area and always switch off your phone whenever it is forbidden to use it.


Water resistance

Your phone is not water-resistant. Keep it dry.

Sensible use

Use only in the normal position (held to your ear). Avoid unnecessary contact with the antenna when the phone is switched on.

Emergency calls

Key in the emergency number for your present location, then press . Do not end the call until given permission to do so.

Small children and your phone

Keep the phone and all its parts including accessories out of reach of small children.


Feature	Description	Select
Change properties of a caller group	Select a ringtone and image for incoming calls from members of a group. Also change the group name.	Phonebook > Group setting
Manage contacts	Copy all contacts on the SIM card to the phone's memory, delete all Phonebook contacts. You can also check memory information for Phonebook contacts.	Phonebook > Management
SDN (Service Dialling Numbers)	Access the list of service numbers assigned by your service provider.	Phonebook > Service directory
View recent calls	View the most recent calls you have dialled, received, or missed.	Menu > Call log > Missed calls, Received calls, or Dialled calls
Delete recent calls	Delete the call logs in each call type, or all logs at once.	Menu > Call log > Delete all
Call time display	View the duration of recent calls you have dialled and received. Also reset the time counter.	Menu > Call log > Call time
Call cost display	View the cost of your calls.	Menu > Call log > Call costs
Network services	Access network services offered by your service provider.	Menu > Network services
Voice memo	Record voice memos and listen to them.	Menu > Applications > Voice recorder

Feature	Description	Select
Java applications	Access the embedded Java games and downloaded Java applications.	Menu > Fun box > JAVA world
Schedule an item	Create a new item.	Menu > Planner > New memo
Calendar	Keep track of daily or monthly schedules.	Menu > Planner > Calendar
Task list	Create a list of tasks and assign a deadline to each task.	Menu > Planner > To do list
Time and date	Set the current time and date manually and set your local time zone.	Menu > Planner > Clock
Automatic time update	Set your phone to update the current time automatically when you travel abroad. Time information may not be updated when you move from one time zone to another within a country.	Menu > Planner > Clock > Auto update
Alarm	Set an alarm to sound at a specific time.	Menu > Planner > Alarm
Calculator	Perform basic arithmetic functions.	Menu > Planner > Calculator
Converter	Do conversions such as currency and temperature.	Menu > Planner > Converter
Timer	Set a period of time for the phone to count down.	Menu > Planner > Timer
Stopwatch	Measure elapsed time.	Menu > Planner > Stopwatch

Accessories and batteries

Use only Samsung-approved batteries and accessories, such as headsets and PC data cables. Use of any unauthorised accessories could damage your phone and may be dangerous.

CAUTION Risk of explosion if a battery is replaced by an incorrect type. Dispose used batteries according to the instructions.

 At very high volume, prolonged listening to a headset can damage your hearing.

Qualified service

Only qualified service personnel may repair your phone.

SAR information


Your wireless phone is a radio transmitter and receiver. It is designed and manufactured not to exceed the emission limits for exposure to radio frequency (RF) energy set by the European Union (EU) Council. These limits are part of comprehensive guidelines and establish permitted levels of RF energy for the general population. The guidelines are based on the safety standards that were developed by independent scientific organisations through periodic and thorough evaluation of scientific studies.

The standards include a substantial safety margin designed to assure the safety of all persons, regardless of age and health.

The exposure standard for wireless phones employs a unit of measurement known as Specific Absorption Rate (SAR). The SAR limit set by the EU Council is 2.0 W/kg. The highest SAR value for this model phone was 0.789 W/kg.

Feature	Description	Select
Bluetooth	Connect the phone wirelessly to other Bluetooth devices and exchange data with them, talk hands-free, or control the phone remotely. You can also download files that are 180 KB or smaller.	Menu > Applications > Bluetooth
Use the SIM service	Use a variety of additional services offered by your service provider.	Menu > Applications > SIM-AT
Select a call ringtone	Select a ringtone for incoming calls, a volume level, or an alert type.	Menu > Sound settings > Incoming calls
Select a message tone	Select the alert ringtone and alert type for incoming SMS and MMS, or set how often you are informed of a new message.	Menu > Sound settings > Messages
Power on/ off tone	Select the melody that the phone sounds when it is switched on or off.	Menu > Sound settings > Power on/off
Connection tone	Set the phone to beep when a call is connected to the system.	Menu > Sound settings > Connection tone
Select a key tone	Select a tone which the phone sounds when you press a key.	Menu > Sound settings > Keypad tone
Minute minder	Set the phone to beep every minute during an outgoing call to keep you informed of the length of your call.	Menu > Sound settings > Minute minder

Feature	Description	Select
Camera	Take photos in various modes, and access saved photos. You can also delete photos or check memory information for photos.	Menu > Camera
Display settings	Change settings for the display and backlight.	Menu > Phone settings > Display
Greeting message	Enter the greeting message to be displayed when the phone is switched on.	Menu > Phone settings > Greeting message
Language selection	Select a language to be used for the display text or text input mode.	Menu > Phone settings > Language
Offline mode	Switch the phone to Offline mode. This mode is helpful when you want to use your phone in a place where you are not allowed to use mobile devices, such as in an airplane and at a hospital.	Menu > Phone settings > Offline mode
Security	Protect the phone against unauthorised use.	Menu > Phone settings > Security
Mobile tracker	Track your phone when it is stolen or lost. When someone tries to use your phone with other SIM card, the phone will automatically send the preset tracking message to your family or friends.	Menu > Phone settings > Security > Mobile tracker
Auto redial	Set the phone to make up to ten attempts to redial a phone number after an unsuccessful call.	Menu > Phone settings > Auto redial

SAMSUNG ELECTRONICS 

Declaration of Conformity (R&TTE)

We, **Samsung Electronics**, declare under our sole responsibility that the product **GSM Mobile Phone : SGH-X550** to which this declaration relates, is in conformity with the following standards and/or other normative documents.

SAFETY	EN 60950 - 1 : 2001 +A11:2004 EN 301 489 - 01 V1.5.1 (11-2004)
EMC	EN 301 489 - 07 V1.2.1 (08-2002) EN 301 489 - 17 V1.2.1 (08-2002) EN 50360 : 2001
SAR	EN 50361 : 2001
RADIO	EN 301 511 V9.0.2 (03-2003) EN 300 328 V1.6.1 (11-2004)

We hereby declare that [all essential radio test suites have been carried out and that] the above named product is in conformity to all the essential requirements of Directive 1999/5/EC.

The conformity assessment procedure referred to in Article 10 and detailed in Annex[IV] of Directive 1999/5/EC has been followed with the involvement of the following Notified Body(ies):

BABT, Balfour House, Churchfield Road, Walton-on-Thames, Surrey, KT12 2TD, UK*
Identification mark: 0168

The technical documentation kept at : **Samsung Electronics QA Lab.**

which will be made available upon request. **(Representative in the EU)**

Samsung Electronics Euro QA Lab.
Blackbushe Business Park, Saxony Way,
Yateley, Hampshire, GU46 6GG, UK*

2007.04.19 **Yong-Sang Park / S. Manager**
(place and date of issue) (name and signature of authorised person)

* It is not the address of Samsung Service Centre. For the address or the phone number of Samsung Service Centre, see the warranty card or contact the retailer where you purchased your phone.