



SGH-Z720

User's Guide





Important safety precaution



Failure to comply with the following precautions may be dangerous or illegal.

Use road safety at all times

Do not use a hand-held phone while driving. Park the vehicle first.

Switch off the phone when refuelling

Do not use the phone at a refuelling point (service station) or near fuels or chemicals.

Switch off in an aircraft

Wireless phones can cause interference. Using them in an aircraft is both illegal and dangerous.

Switch off the phone near all medical equipment

Hospitals or health care facilities may be using equipment that could be sensitive to external radio frequency energy. Follow any regulations or rules in force.

Interference

All wireless phones may be subject to interference, which could affect their performance.



Be aware of special regulations

Meet any special regulations in force in any area and always switch off your phone whenever it is forbidden to use it, or when it may cause interference or danger.


Water resistance

Your phone is not water-resistant. Keep it dry.

Sensible use

Use only in the normal position (held to the ear). Avoid unnecessary contact with the antenna when the phone is switched on.

Emergency calls

Key in the emergency number for your present location, then press .

Keep your phone away from small children

Keep the phone and all its parts, including accessories, out of the reach of small children.

Accessories and batteries

Use only Samsung-approved batteries and accessories, such as headsets and PC data cables. Use of any unauthorised accessories could damage you or your phone and may be dangerous.

- The phone could explode if the battery is replaced with an incorrect type.
- Dispose of used batteries according to the manufacturer's instructions.



At very high volume, prolonged listening to a headset can damage your hearing.

Qualified service

Only qualified service personnel may repair your phone.

For more detailed safety information, see "Health and safety information" on page 115.

About this Guide

This User's Guide provides you with condensed information about how to use your phone. To quickly learn the basics for your phone, please refer to "Get started" and "Step outside the phone."

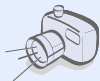
In this guide, the following instruction icons appear:

- ☑ Indicates that you need to pay careful attention to the subsequent information regarding safety or phone features.
- ▶ Indicates that you can get more information on the referenced page.
- Indicates that you need to press the Navigation keys to scroll to the specified option and then select it.
- [] Indicates a key on the phone. For example, [↵]
- < > Indicates a soft key, whose function is displayed on the phone screen. For example, <Select>



- **3G**
Your phone is capable of operating in a 3G environment, allowing much greater data transfer speed, video streaming, and video conferencing.

Special features of your phone



- **Camera and camcorder**
Use the camera module on your phone to take a photo or record a video.



- **Media player**
Play media files on your phone. You can enjoy high quality videos and music.



- **Bluetooth**
Transfer media files and personal data and connect to other devices using free, wireless Bluetooth technology.



- **Web browser**
Access the wireless web to get up-to-the-minute information and a wide variety of media content.



- **Get personal with photo caller ID**
See who's calling you with their very own photo displays.



- **Name card**
Create name cards with your number and profile. Whenever introducing yourself to others, use this convenient electronic name card.



- **File viewer**
Open documents in various formats on the phone without corruption.



- **Multimedia Message Service (MMS)**
Send and receive MMS messages with a combination of text, images, video, and audio.



- **E-mail**
Send and receive e-mails with image, video, and audio attachments.



- **Java**
Enjoy Java™-based embedded games and download new games.



- **Calendar**
Keep track of your daily, weekly, and monthly schedule.

Contents

Unpack 6

Make sure you have each item

Your phone 6

Keys, features, and locations

Get started 7

First steps to operating your phone

Install and charge the phone 7

Power on or off 8

Keys and display 9

Access menu functions 12

Customise your phone 13

Make/Answer calls 15

Step outside the phone 16

Begin with your camera, the media player, the web, and other special features

Use the camera 16

Play music 17

Browse the web 18

Use Contacts 19

Send messages 20

View messages 22

Use Bluetooth 23

Switch applications 24

Use a memory card 25

Enter text 27

ABC, T9, Number, and Symbol modes

Call functions 29

Advanced calling features

Menu functions 36

All menu options listed

Solve problems 113

Help and personal needs

Health and safety information 115

Index 123

Overview of menu functions

To access Menu mode, press [OK] in Idle mode.

| | | | | | |
|----------------------|---------|--------------------------|---------|----------------------------------|----------|
| 1 Call log | ▶ p. 36 | 6 My files | ▶ p. 69 | 0 Alarms | ▶ p. 94 |
| 2 Contacts | ▶ p. 38 | Images | ▶ p. 69 | # Settings | ▶ p. 95 |
| 3 Media player | ▶ p. 42 | Videos | ▶ p. 71 | 1 Phone profiles | ▶ p. 95 |
| 4 Internet | ▶ p. 47 | Sounds | ▶ p. 72 | 2 Time & date | ▶ p. 96 |
| 1 Go to homepage | ▶ p. 47 | Games and more | ▶ p. 74 | 3 Display & light settings | ▶ p. 97 |
| 2 Enter URL | ▶ p. 49 | Other files | ▶ p. 75 | 4 Phone settings | ▶ p. 98 |
| 3 Bookmarks | ▶ p. 49 | Media album ¹ | ▶ p. 77 | 5 Call settings | ▶ p. 99 |
| 4 Saved pages | ▶ p. 50 | Memory status | ▶ p. 77 | 6 Security | ▶ p. 103 |
| 5 History | ▶ p. 50 | 7 Calendar | ▶ p. 78 | 7 Application settings | ▶ p. 105 |
| 6 Advanced | ▶ p. 50 | 8 Camera | ▶ p. 82 | 8 Network settings | ▶ p. 106 |
| 7 Browser settings | ▶ p. 51 | 9 Google ¹ | ▶ p. 88 | 9 Memory settings | ▶ p. 112 |
| 5 Messaging | ▶ p. 51 | 1 Search | ▶ p. 88 | 0 Operator settings ¹ | ▶ p. 112 |
| 1 Create new message | ▶ p. 51 | 2 Map | ▶ p. 88 | * Master reset | ▶ p. 112 |
| 2 Inbox | ▶ p. 55 | 3 Mail | ▶ p. 88 | | |
| 3 Email inbox | ▶ p. 58 | * Applications | ▶ p. 88 | | |
| 4 Drafts | ▶ p. 60 | 1 Memo | ▶ p. 88 | | |
| 5 Outbox | ▶ p. 60 | 2 Tasks | ▶ p. 89 | | |
| 6 Sentbox | ▶ p. 61 | 3 Voice recorder | ▶ p. 90 | | |
| 7 My folder | ▶ p. 61 | 4 World clock | ▶ p. 92 | | |
| 8 Templates | ▶ p. 62 | 5 Calculator | ▶ p. 92 | | |
| 9 Delete all | ▶ p. 63 | 6 Converter | ▶ p. 93 | | |
| 0 Messasing settings | ▶ p. 63 | 7 Timer | ▶ p. 93 | | |
| * Memory status | ▶ p. 69 | 8 Stopwatch | ▶ p. 94 | | |
| | | 9 SAT ² | ▶ p. 94 | | |

1. Shows only if supported by your service provider.

2. Shows only if supported by your USIM/SIM card.

Unpack

Make sure you have each item

- Phone
- Travel Adapter
- Battery
- PC Data Cable
- PC Link CD
- User's Guide

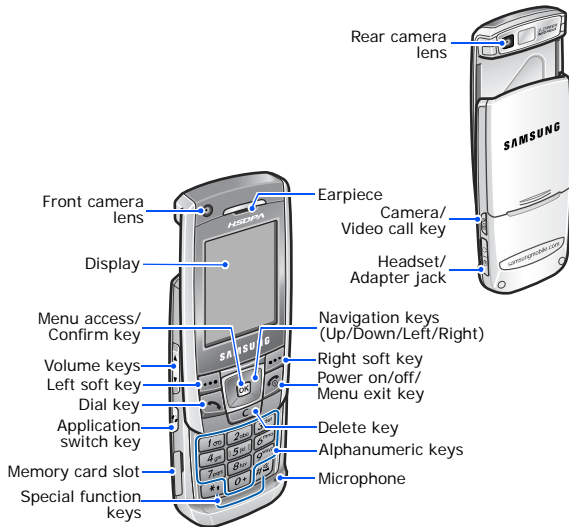
You can obtain various accessories from your local Samsung dealer.



The items supplied with your phone and the accessories at your Samsung dealer may vary, depending on your country or service provider.

Your phone

Keys, features, and locations



Get started

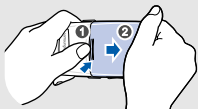
First steps to operating your phone

USIM/SIM card information

When you subscribe to a cellular network, you receive a plug-in SIM (Subscriber Identity Module) card loaded with your subscription details, such as your PIN, and available optional services. For 3G services, you can purchase a USIM (Universal Subscriber Identity Module) card.

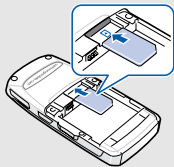
Install and charge the phone

- 1 Remove the battery cover.



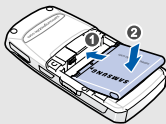
- If the phone is already on, first turn it off by pressing and holding [Power].

- 2 Insert the USIM/SIM card.

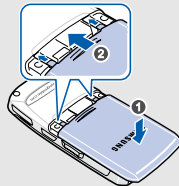


- Make sure that the gold-coloured contacts on the card are face down.

- 3 Install the battery.



- 4 Reattach the battery cover.



- 5 Plug the travel adapter into the phone.



- 6 Plug the adapter into a standard AC power outlet.


- 7 When the phone is completely charged (the battery icon becomes still), unplug the adapter from the power outlet.

- 8 Remove the adapter from the phone.



Low battery indicator


When the battery is low:

- a warning tone sounds,
- the battery low message displays, and
- the empty battery icon  blinks.

If the battery level becomes too low, the phone automatically turns off. Recharge your battery.

Power on or off


Switch on

1. Open the phone.
2. Press and hold [].

Do not turn on the phone when mobile phone use is prohibited.

3. If necessary, enter the PIN and press **<Confirm>**.

Switch off

1. Open the phone.
2. Press and hold [].

Keypad lock

When you close the phone, the keypad lock feature locks the exposed keys so that nothing will happen if the keys are accidentally pressed.

To unlock the keypad, press **<Unlock>** and then press **<OK>**.

Keys and display

Keys



Perform the function indicated on the bottom line of the display.



In Idle mode, access your favourite menus directly.

► p. 98

In Menu mode, scroll through menu options.



In Idle mode, access Menu mode.

In Menu mode, select a highlighted menu option or confirm input.



Make or answer a call.

In Idle mode, retrieve numbers recently dialled, missed, or received.



Delete characters from the display or items in an application.



Press and hold to switch the phone on or off.

End a call.

In Menu mode, cancel input and return the phone to Idle mode.



Enter numbers, letters, and some special characters.



In Idle mode, press and hold [1] to access your voicemail server. Press and hold [0] to enter an international call prefix.



Enter special characters.



Press and hold [#] to activate or deactivate the Silent profile. Press and hold [*] to enter a pause between numbers.



Adjust the phone volume.

In Idle mode, adjust the key tone volume. With the phone closed, press and hold to turn on the display.



Open the application switch window to access other applications without exiting the current application.



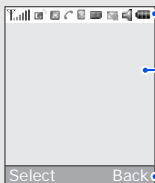
In Idle mode, press and hold to turn on the camera or make a video call, depending on the **Camera key** setting. ▶ p. 99

In Camera mode, take a photo or record a video.

In the dialling screen, make a video call.

Display

Layout









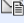






Icons
display various icons.
















Text and graphics
display messages, instructions, and information you enter.

Soft key function indicators
show the current functions assigned to the soft keys.

Icons¹

- Received signal strength
- Accessing services in a 2.5G (GPRS) network; when transferring data, this icon animates
- Accessing services in an EDGE network; when transferring data, this icon animates
- Accessing services in a 3G (UMTS) network; when transferring data, this icon animates
- Accessing services in a 3G+ (HSDPA) network; when transferring data, this icon animates
- Roaming network
- Voice call in progress
- Out of your service area; you cannot make or receive voice calls
- Video call in progress

-  Out of your service area; you cannot make or receive video call
-  Memory card inserted
 - ▶ p. 25
-  Bluetooth active; When transferring data, this icon blinks red and blue ▶ p. 107
-  Connected with PC via a USB port
-  Browsing Internet on PC using the phone as modem
-  Connected to secured web page
-  New message:
 -  : SMS
 -  : MMS
 -  : E-mail
 -  : Voicemail
 -  : Push
 -  : Configuration message

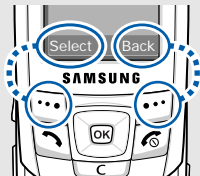
-  Inbox full:
 -  : SMS
 -  : MMS
 -  : E-mail
 -  : Voicemail
 -  : Push
 -  : Configuration message
-  Profile setting ▶ p. 96
 -  : Normal
 -  : Silent
 -  : Driving
 -  : Meeting
 -  : Outdoor
 -  : Offline
-  Battery power level

1. Depending on your country or service provider, the icons shown on the display may vary.

Access menu functions

Use the soft keys

The roles of the soft keys vary depending on the function you are using. The bottom line of the display indicates their current role.



Press the left soft key to select the highlighted option.

Press the right soft key to return to the previous menu level.

Select an option

1. Press a desired soft key.
2. Press the Navigation keys to move to the next or previous option.
3. Press **<Select>** or **[OK]** to confirm the function displayed or option highlighted.
4. To exit, choose either of the following methods:
 - Press **<Back>** to move up one level.
 - Press **[Home]** to return to Idle mode.

Use shortcuts

Press the number key corresponding to the option you want.

Customise your phone

Display language

1. In Idle mode, press [OK] and select **Settings** → **Phone settings** → **Language** → **Screen text**.
2. Select a language.
3. Press <**Save**>.

Call ringer melody

You can change the call ringer by changing the properties of the currently active sound profile.

To change the profile properties:

1. In Idle mode, press [OK] and select **Settings** → **Phone profiles**.
2. Scroll to the sound profile you are using.

3. Press <**Options**> and select **Edit**.
4. Select **Voice call ringtone** and select a ringtone for voice calls.
5. Select **Video call ringtone** and select a ringtone for video calls.
6. Press <**Options**> and select **Save**.

To change the sound profile:

1. In Idle mode, press [OK] and select **Settings** → **Phone profiles**.
2. Select the profile you want.

Idle mode Wallpaper

You can set a wallpaper for the idle screen.

1. In Idle mode, press [OK] and select **Settings** → **Display & light settings** → **Display settings** → **Wallpaper** → **Pictures** → **Images**.
2. Scroll to an image folder.
3. Select an image.
4. Press <Set>.

Menu shortcuts

You can set the Navigation keys to function as shortcuts to access your favourite menus.

1. In Idle mode, press [OK] and select **Settings** → **Phone settings** → **Shortcuts**.
2. Select a key.
3. Select a menu to be assigned to the key.

Silent profile

You can activate the Silent profile to avoid disturbing other people.

Press and hold [#] in Idle mode.

Phone lock

You can protect the phone against unauthorised use with a phone password. The phone will require the password on power-up.

1. In Idle mode, press [OK] and select **Settings** → **Security** → **Change phone password**.
2. Enter a new 4- to 8-digit password and press <Confirm>.
3. Enter the new password again and press <Confirm>.

-
4. Select **Phone lock**.
 5. Select **On**.
 6. Enter the password and press <**Confirm**>.

Make/Answer calls

Make a call

To make a voice call:

1. Enter an area code and phone number.
2. Press [].
3. To end the call, press [].

To make a video call:

1. Enter an area code and phone number.
2. Press [].
3. To end the call, press [].

Answer a call

1. When the phone rings, press [].
2. For a video call, press <**Show me**> to allow the other person to see you.
3. To end the call, press [].

Adjust the volume during a call

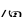




Press [/▼].

Step outside the phone

Begin with your camera, the media player, the web, and other special features

Use the camera


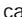




Take a photo

1. Open the phone.
2. In Idle mode, press and hold [ / ] to turn on the camera.
3. Aim the lens at the subject and make any desired adjustments.
4. Press [OK] or [ / ] to take a photo. The photo is saved automatically.
5. Press <  > or <Back> to take another photo.

View a photo

1. In Idle mode, press [OK] and select **My files**.
2. Select the photo you want.

Record a video

1. In Idle mode, press and hold [ / ] to turn on the camera.
2. Press [1] to switch to Record mode.
3. Press [OK] or [ / ] to start recording.
4. Press [OK] or [ / ] to stop recording. The video is saved automatically.
5. Press <Back> to record another video.

Play a video

1. In Idle mode, press [OK] and select **My files**.
2. Select the video you want.

Play music

Copy media files to the phone

Use these methods:

- Download from the wireless web ▶ p. 47
- Download from a computer using the optional Samsung PC Studio ▶ Samsung PC Studio User's Guide
- Receive via Bluetooth ▶ p. 109
- Copy to a memory card and insert the card into the phone ▶ p. 25

Create a play list

1. In Idle mode, press [OK] and select **Media player**.
2. Scroll to the **Music** tab.
3. Press <**Options**> and select **Create playlist**.
4. Enter the name for the play list and press <**Save**>.
5. Select the play list you just created.
6. Press <**Options**> and select **Add** → **Playlist** or **Files**.
7. Scroll to the play list you want, or press [OK] to select the files you want.
8. Press <**Select**> or <**Add**>.

Play music files

1. Select the file you want to play.
2. During playback, use the following keys:
 - **OK**: pauses or resumes playback.
 - **Up**: opens the play list.
 - **Left**: returns to the previous file. Moves backward in a file when held down.
 - **Right**: skips to the next file. Skips forward in a file when held down.
 - **▲/▼**: adjusts the volume.
3. Press **[Down]** to stop playback.

Browse the web

Using a built-in web browser, you can easily access the wireless web to get a variety of up-to-date services and information and to download web content.

Launch the web browser

In Idle mode, press **[OK]** and select **Internet** → **Go to homepage**.

Navigate the web

- To scroll through browser items, press **[Up]** or **[Down]**.
- To select an item, press **<Select>** or **[OK]**.
- To return to the previous page, press **<Back>**.
- To access options, press **<Options>**.

Use Contacts

Add a contact


To the phone's memory:

1. In Idle mode, enter a phone number.
2. Press <**Options**> and select **Add to Contacts** → **Phone** → **New** → a number type.
3. Specify contact information: First name, Last name, Display name, Mobile-private, Landline-private, Email, Group, Caller ID, Ringtone, and More information.
4. Press [**OK**] to save the contact.

To the USIM/SIM card:

1. In Idle mode, enter a phone number.
2. Press <**Options**> and select **Add to Contacts** → **SIM** → **New**.
3. Specify contact information: Name, Phone number, Group (for USIM), and Location number.
4. Press <**Save**>, or press <**Options**> and select **Save** to save the contact.

Find a contact

1. In Idle mode, press [OK] and select **Contacts**.
2. Enter the first few letters of the name you want.
3. Select a contact from the Contacts list.
4. Scroll to a number and press [] to dial, or press [OK] to edit contact information.


Create and send a name card

1. In Idle mode, press [OK] and select **Contacts**.
2. Press <Options> and select **My contact details**.
3. Specify your contact information.
4. Press [OK] to save the name card.

5. To send the name card, press <Options> and select **Send my contact details** → a sending method.

Send messages

Send a text message (SMS)

1. In Idle mode, press < > and select **Create new message** → **Message**.
2. Enter your message.
3. Press [UP] to move to the recipient field.
4. Enter a destination number.
To send the message to more than one recipient, press [Right] and enter additional destination numbers.
5. Press <Options> and select **Send** to send the message.

Send a multimedia message (MMS)

1. In Idle mode, press <✉> and select **Create new message** → **Message**.
2. Enter your message.
3. Press <Options> and select **Add subject**.
4. Press <OK>.
5. Enter the message subject and press [Down] to move to the text field.
6. Press <Options> and select **Add item**, **Create item**, or **Add attachment**.
7. Add a media file, Contacts entry, calendar item, or bookmark item.
8. Press [Up] until the recipient field highlights.

9. Enter destination numbers or e-mail addresses.

To send the message to more than one recipient, press [Right] and enter additional numbers or e-mail addresses.

10. Press <Options> and select **Send** to send the message.

Send an e-mail

1. In Idle mode, press <✉> and select **Create new message** → **Email**.
2. Enter the e-mail text.
3. Press <Options> and select **Add subject**.
4. Enter the subject of the e-mail.

Send an e-mail
(continued)

5. Press <**Options**> and select **Add item** or **Create item**.
6. Add a media file, Contacts entry, calendar item, or bookmark item.
7. Press [Up] until the recipient field highlights.
8. Enter destination e-mail addresses.
To send the e-mail to more than one recipient, press [Right] and enter additional e-mail addresses.
9. Press <**Options**> and select **Send** to send the e-mail.



View messages

View a text message

When a notification appears:

1. Press <**View**>.
2. Select the message from the Inbox.

From the Inbox:



1. In Idle mode, press < > and select **Inbox**.
2. Select an SMS message ().

View a multimedia message

When a notification appears:

1. Press <**View**>.
2. Select the message from the Inbox.

From the Inbox:

1. In Idle mode, press < > and select **Inbox**.
2. Select an MMS message ().

View an e-mail

1. In Idle mode, press <☒> and select **Email inbox**.
2. Press <**Options**> and select **Download**.
3. Select an e-mail or header.
4. If you selected a header, press <**Options**> and select **Retrieve** to view the body of the e-mail.

Use Bluetooth

Your phone is equipped with Bluetooth technology, enabling you to connect the phone wirelessly to other Bluetooth devices and exchange data with them, talk hands-free, or control the phone remotely.

Turn on Bluetooth

1. In Idle mode, press [OK] and select **Settings** → **Network settings** → **Bluetooth** → **Activation** → **On**.
2. Select **My phone's visibility** → **On** to allow other devices to find your phone.

Search for and pair with a Bluetooth device

1. In Idle mode, press [OK] and select **Settings** → **Network settings** → **Bluetooth** → **My devices** → **Search new device**.
2. Select a device.
3. Enter a Bluetooth PIN or the other device's Bluetooth PIN, if it has one, and press <OK>. When the owner of the other device enters the same code, pairing is complete.

Send data

1. Access an application, **Contacts**, **My files**, **Calendar**, **Memo**, or **Tasks**.
2. Select the item you want to send.
3. Press **<Options>** and select **Send contact details/Send/Send via** → **Via Bluetooth/Bluetooth**.
4. Select a device.
5. If necessary, enter the Bluetooth PIN and press **<OK>**.

Receive data

1. When a device attempts to access your phone, press **<Yes>** to confirm that you are willing to receive.
2. If necessary, press **<Yes>** to confirm that you are willing to receive.

Switch applications

You can switch to other applications from a menu, without closing the menu screen you were using.

Switch to an application

1. While using a menu, press [☰].
2. Select an application.

Available applications

- **Call**: opens the dialling screen.
- **Messaging**: accesses the **Messaging** menu.
- **Internet**: launches the web browser.

Close all running applications

1. Press [☰].
2. Scroll to **End all?**.
3. Press **<Yes>**.

Use a memory card

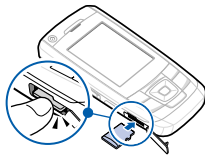
You can use an optional microSD memory card to increase your phone's memory capacity.

Important memory card information

- Frequent erasing and writing will shorten a card's lifespan.
- Do not remove a card from the phone or turn off the phone while data is being accessed or transferred. This could result in loss of data and/or damage to the card or phone.
- Do not subject cards to strong shocks.
- Do not touch card terminals with your fingers or metal objects. If dirty, wipe the card with a soft cloth.

Insert a memory card

- Keep cards away from small children or pets.
 - Do not expose cards in a place subject to electrostatic discharge and/or electrical noise.
1. Insert a memory card into the memory card slot, with the label side face up.



2. Press the card until it locks into place.

Remove the memory card

1. Press the memory card so that it is disengaged from the phone.
2. Remove the card from the slot.

Use a card adapter

Using a card adapter and a USB card reader/writer, you can read the card on a PC.

1. Insert a memory card into a card adapter, and then the adapter into a card reader/writer.
2. Plug the USB connector of the card reader/writer into the USB port on your PC.
3. Access the appropriate memory disk and copy to and from the card.

Enter text

ABC, T9, Number, and Symbol modes

You can enter text for some features such as Messaging, Contacts, or Calendar, using ABC mode, T9 mode, Number mode, and Symbol mode.

Changing the text input mode

- Press and hold [*****] to switch between T9 (**T9**) and ABC (**Abc**) modes.
- Press [*****] to change case or to switch to Number mode (**123**).
- Press and hold [**#**] to switch to Symbol mode (**SYM**).

Using ABC mode

Press the appropriate key until the character you want appears on the screen.

| Key | Characters in order displayed | |
|-----|-------------------------------|-----------------|
| | Upper case | Lower case |
| 1 | . , - ? ! @ : () / 1 | |
| 2 | A B C Ä Å Æ Ç 2 | a b c ä å æ ç 2 |
| 3 | D E F É Δ Φ 3 | d e f è é φ 3 |
| 4 | G H I Γ 4 | g h i ì Γ 4 |
| 5 | J K L Λ 5 | j k l λ 5 |
| 6 | M N O Ñ Ö Ø Ω 6 | m n o ñ ö ø Ω 6 |
| 7 | P Q R S Π Σ Ψ 7 | p q r s β Σ Ψ 7 |
| 8 | T U V Ü Θ 8 | t u v ü ù 8 |
| 9 | W X Y Z Ξ 9 | w x y z ξ 9 |
| 0 | + = < > € £ \$ % & ¥ ¤ 0 | |

(Creating an SMS message with GSM alphabet encoding)

Other ABC mode operations

- To enter the same letter twice or to enter a different letter on the same key, wait for the cursor to move to the right automatically or press [Right]. Then, enter the next letter.
- Press [**#**] to insert a space.

- Press the Navigation keys to move the cursor.
- Press [C] to delete characters one by one. Press and hold [C] to clear the entire display.

Using T9 mode

T9 is a predictive text input mode that allows you to enter any character using single keystrokes.

Entering a word in T9 mode

1. Press [2] to [9] to start entering a word. Press each key once for each letter.
For example, press [4], [3], [5], [5], and [6] to enter *Hello* in T9 mode.
T9 predicts the word that you are typing, and it may change with each key that you press.
2. Enter the whole word before editing or deleting characters.
3. When the word displays correctly, go to step 4. Otherwise, press [0] to display alternative word choices for the keys that you have pressed.

For example, *Of* and *Me* use [6] and [3].

4. Press [#] to insert a space and enter the next word.

Other T9 mode operations

- Press [1] to enter periods or apostrophes automatically.
- Press [#] to insert a space.
- Press the Navigation keys to move the cursor.
- Press [C] to delete characters one by one. Press and hold [C] to clear the entire display.

Adding a new word to the T9 dictionary

This feature may not be available for some languages.

1. Enter the word that you want to add.
2. Press [0] to display alternative words for your key presses. When there are no more alternative words, **Spell** displays on the bottom line.
3. Press <Spell>.

4. Enter the word you want using ABC mode and press **<Add>**.

Using Number mode

Number mode enables you to enter numbers. Press the keys corresponding to the digits you want.

Using Symbol mode

Symbol mode enables you to insert symbols.

| To | Press |
|---------------------------|-------------------------------|
| scroll to a symbol set | the Navigation keys |
| select a symbol | the corresponding number key. |
| clear the entered symbols | [C] . |
| insert the symbols | <OK> . |

Call functions

Advanced calling features



Making a call

1. In Idle mode, enter the area code and phone number.
 - Press **[C]** to delete the last digit or press and hold **[C]** to clear the whole display.
 - Press and hold **[*]** to enter a pause between numbers.
2. Press **[↵]**.
3. When you want to end the call, press **[⏏]**.

Making an international call

1. In Idle mode, press and hold **[0]**. The + character appears.
2. Enter the country code, area code, and phone number, then press **[↵]**.

Redialling recent numbers


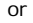
1. In Idle mode, press [] to display the list of recent numbers.
2. Scroll to the number you want and press [].

Making a call from Contacts

Once you have stored a number in Contacts, you can dial the number by selecting it from Contacts. ▶ p. 40

You can also use the speed dial feature to assign your most frequently dialled numbers to specific number keys. ▶ p. 105

You can quickly dial a number from the USIM/SIM card using its location number assigned when stored.


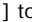
1. In Idle mode, enter a location number and press [#].
2. Scroll through other numbers, if necessary.
3. Press <Call> or [] to make a voice call, or <V-Call> or [] to make a video call.

Answering a call

When you receive an incoming call, the phone rings and displays the incoming call image.


Press <Accept> or [] to answer the call.

Tips for answering a call

- When **Slide up** in **Slide settings** is set to **Accept call**, you can simply open the phone. ▶ p. 99
- Press <Reject> or [] to reject a call.
- Press and hold [] to reject a call or mute the ringer, depending on the **Volume key function** setting. ▶ p. 99

Viewing missed calls

If you have missed calls, the screen displays how many calls you have missed.

1. Press <View>.
2. If necessary, scroll through the missed calls.
3. Press [] to dial the number you want.

Using the headset

Use the headset to make or answer calls without holding the phone.

Connect the headset to the jack on the right side of the phone. The button on the headset works as follows:

| To | Press |
|----------------------|-----------------------------|
| redial the last call | and hold the button, twice. |
| answer a call | the button. |
| end a call | and hold the button. |

Options during a call

You can access a number of functions during a call.

Adjusting the volume during a call

Use [▲/▼] to adjust the earpiece volume during a call.

Press [▲] to increase the volume level and press [▼] to decrease the volume level.

Placing a call on hold/Retrieving

Press <**Hold**> to place a call on hold, or press <**Retrieve**> to retrieve the call.

Making a second call


You can make another call if your network supports this function.

1. Press <**Hold**> to put the call on hold.
2. Make the second call in the normal way.
3. Press <**Swap**> to switch between the calls.
4. Press <**Options**> and select **End** → **Held call** to end the call on hold.
5. To end the current call, press [📞].

Answering a second call

You can answer an incoming call while already on the phone, if your network supports this function and you have activated the call waiting feature. ▶ p. 102

1. Press [📞] to answer the call. The first call is automatically put on hold.
2. Press <**Swap**> to switch between the calls.

3. Press <**Options**> and select **End** → **Held call** to end the call on hold.
4. To end the current call, press [].

Using the speakerphone feature

Use the phone as a speakerphone to talk and listen with the phone a short distance away.

Press [**OK**] and then <**Yes**> to activate the speakerphone feature. Press [**OK**] again to switch back to the earpiece.

Using In-call options

During a call, press <**Options**> to access the following options:

- **Speaker on/Normal:** turn on the speakerphone feature or switch back to Normal mode.
- **Switch to headset/Switch to phone:** switch the call to a Bluetooth headset or hands-free car kit or back to the phone. To use this feature, you first need to connect your headset or car kit to the phone. ▶ p. 107
- **Whisper mode on/Whisper mode off:** turn on or off Whisper mode. Whisper mode automatically increases the microphone's sensitivity to allow the other person to hear your voice even though you may be whispering.
- **Join:** set up a multi-party call by adding a caller on hold to a currently active call. You can include up to 5 people on a multi-party call.
- **Split:** have a private conversation with one multi-party call participant. The other participants can converse with each other. After the private conversation, select **Join** to return both private participants to the multi-party call.
- **Swap:** switch between calls, if a call is on hold.
- **Transfer:** transfer the currently active call to a caller on hold. The two callers can talk to each other, but you are disconnected from the call.
- **Hold/Retrieve:** place a call on hold or retrieve the call.


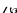
- **Mute:** access the following muting options:
Voice: switch off the phone's microphone so that the other person on the phone cannot hear you, or switch it back on.
Keypad tones: turn the key tones off or on.

To communicate with answering machines or computerised telephone systems, **Keypad tones** must be deactivated.
- **Add to Contacts:** add the sender's number to Contacts.
- **View contact details:** access the contact information, if the caller is saved in Contacts.
- **Create message:** create a new SMS or MMS message.
- **Calendar:** keep track of your schedule.
- **Memo:** create a memo.
- **Switch to video call:** switch to a video call.
- **End call/End:** disconnect the call currently on hold, active call, or all calls.
- **Call:** make a voice call to the entered numbers.
- **Save as memo:** save the entered numbers as a memo.
- **New call:** make a new voice call.
- **Send DTMF:** send DTMF (Dual tone multi-frequency) tones as a group. The DTMF tones are the tones used in phones for tone dialling, sounding when you press the number keys. This option is helpful for entering a password or an account number when you call an automated system, like a banking service.
- **Contacts:** locate or store contacts in Contacts.

Using the video call feature

In a 3G (UMTS) service area, your phone can make or receive a video call, allowing you to see another person on the screen during a conversation. The other person's phone must support the video call feature.

Making a video call

1. In Idle mode, enter the area code and phone number.
2. Press [ / ].

Answering a video call

When you receive a video call, answer a video call as receiving a voice call. Press <**Show me**> to allow the caller to see you via the camera.

Using video call options

During a video call, press <**Options**> to access the following options:

- **Switch to headset/Switch to phone:** switch the call to a Bluetooth headset or hands-free car kit, or back to the phone. To use this feature, you first need to connect your headset or car kit to the phone. ▶ p. 107
- **Whisper mode on/Whisper mode off:** turn on or off Whisper mode. Whisper mode automatically increases the microphone's sensitivity to allow the other person to hear your voice even though you may be whispering.
- **Outgoing image:** set an image to be displayed on the other person's phone.
- **Mute:** turn off the microphone, or key tones.
- **Record video call/Stop recording:** start recording the current video call and stop recording.
- **External camera/Internal camera:** switch between the front camera lens and the rear camera lens.
- **Capture image:** capture the image that is displayed on the screen.

- **Display options:** access the camera settings for the video call.
Brightness: display the brightness control bar and adjust the brightness by pressing [Left] or [Right].
Effects: change the colour tone of the image.
Quality: change the image quality.
Viewing style: select a view mode.
Zoom: display the zoom control bar and zoom in or out by pressing [Up] or [Down].
Hide caller ID/Show caller ID: hide or display the caller's phone number, or name if saved in Contacts.
- **More options:** access the following options:
Contacts: locate or store contacts in Contacts.
View contact details: access the contact information, if the caller is saved in Contacts.
Create message: create a new SMS or MMS message.

Message inbox: access the received message list.

Send DTMF: send Dual tone multi-frequency (DTMF) tones as a group after entering the entire number you need to send or retrieving a number from Contacts.

Calendar: access the calendar to check your schedule or enter new appointments.

Memo: create a memo.

- **Switch to voice call:** change the call to a voice call.
- **Settings:** change the default settings for the video call feature. ► p. 102
- **Add to Contacts:** save the entered numbers to Contacts.
- **Save as memo:** save the entered numbers as a memo.

Menu functions

All menu options listed

Call log (Menu 1)

Use this menu to view the calls you have dialled, received, or missed, and the length of the calls. You can also check the cost of your calls, if your USIM/SIM card supports this function.

To access this menu, press **[OK]** in Idle mode and select **Call log**.

Accessing a call log

You can access the most recent calls dialled, received, or missed.

1. Press **[Left]** or **[Right]** to move to another call type.
2. Press **[Up]** or **[Down]** to scroll through the call list.
3. Press **[OK]** to view the details of a call, or press **[↶]** to dial a number.

Using call log options

While viewing call details, press **<Options>** to access the following options:

- **Voice call:** make a voice call to the number.
- **Video call:** make a video call to the number, if the 3G service is available.
- **Save contact to:** save the number to Contacts.
- **Create message:** send an SMS or MMS message to the selected number.
- **Delete:** delete the selected call log or all logs.
- **Add to reject list:** add the number to the Auto reject list so that you can reject calls from that number.
- **View contact details:** access contact information, if the number is saved in Contacts.

Viewing the data counter

From the call log list, press **<Options>** and select **Call manager** → **Data counter** to view the total amount of sent or received data.

The following counters are available:

- **Total sent:** check the total amount of data you have sent.
- **Total received:** check the total amount of data you have received.

To reset a counter or all of the counters, press <**Options**> and select **Reset** or **Reset all**.



If the phone is locked, it will require the password. You can change this password.
▶ p. 104

Viewing call cost

From the call log list, press <**Options**> and select **Call manager** → **Call costs** to view the cost of calls. This option is available only if supported by your USIM/SIM card. Note that this is not intended to be used for billing purposes.

The following counters are available:

- **Total costs:** check the total cost of all your calls. If the total cost exceeds the maximum cost set in **Edit cost limit**, you must reset the counter before you can make another call.

- **Last call cost:** check the cost of your last call.
- **Cost limit:** check the maximum cost set.

Press <**Options**> to access the following options:

- **Reset call cost:** reset the cost counters.
- **Edit cost limit:** set the maximum cost authorised for your calls.
- **Setup currency:** set the currency that is applied when the cost of your call is calculated.

Viewing call time

From the call log list, press <**Options**> and select **Call manager** → **Call times** to view the time log for calls made and received. The actual time invoiced by your service provider will vary.

The following counters are available:

- **Total dialled:** check the total length of voice calls dialled.
- **Total received:** check the total length of voice calls received.

- **Total video calls dialled:** check the total length of video calls dialled.
- **Total video calls received:** check the total length of video calls received.

To reset a counter or all of the counters, press **<Options>** and select **Reset** or **Reset all**.



If the phone is locked, it will require the password. You can change this password.

▶ p. 104

Contacts *(Menu 2)*

You can store phone numbers on your USIM/SIM card and in your phone's memory. The USIM/SIM card and phone's memory are physically separate, but they are used as a single entity called Contacts.

To access this menu, press **[OK]** in Idle mode and select **Contacts**.

Storing a new contact

You can add a new contact to Contacts.

Storing a contact in the phone's memory

1. Scroll to the **Contacts** tab.
2. Press **<Options>** and select **Add contact** → **Phone**.
3. Change the settings or enter information about the contact.
 - **First name/Last name:** assign a name.
 - **Display name:** assign a display name.
 - **Mobile-private:** add a phone number.
 - **Landline-private:** enter a fixed phone number.
 - **Email:** assign an e-mail address.
 - **Group:** assign a caller group.
 - **Caller ID:** assign a caller ID image.
 - **Ringtone:** assign a ringtone to alert you to a call from the person.
 - **More information:** enter the additional note of the person.

4. If necessary, press **<Options>** to access the following options:
 - **Change type:** change the selected number type.
 - **Add more fields:** add an additional category to the contact.
 - **Delete field:** remove the selected category from the contact.
5. Press **<Options>** and select **Save** to save the contact.

Storing a contact on the USIM/SIM card

1. Scroll to the **Contacts** tab.
2. Press **<Options>** and select **Add contact** → **SIM**.
3. Change the settings or enter information about the contact.
 - **Name:** assign a name.
 - **Phone number:** enter a phone number.
 - **Group:** (for USIM) assign a caller group.
 - **Location number:** assign a location number.

4. If you are using a USIM card, press **<Options>** to add additional information:
 - **Add more fields:** add an additional category to the contact.
 - **Delete field:** remove the selected category from the contact.
5. Press **<Save>**, or press **<Options>** and select **Save** to save the contact.

Adding a contact to the FDN list

You can create a list of contacts to be used in FDN (Fixed Dialling Number) mode, in which the phone allows outgoing calls only to the specified phone numbers, if your USIM/SIM card supports this feature.


1. Scroll to the **FDN** tab, or press **<Options>** and select **FDN contacts**.
2. Press **<Options>** and select **Create FDN contact**.
3. Enter the PIN2 and press **<Confirm>**.
4. Change the settings or enter information about the contact:
 - **Name:** assign a name.

- **Phone number:** enter a phone number.
 - **Location number:** assign a location number.
5. Press <**Options**> and select **Save** to save the contact.

- You can add ? in a place where number is not fixed by pressing <**Options**> and selecting **Enter Wildcard**.

Finding a contact

You can search for numbers in Contacts.

1. Scroll to the **Contacts** tab.
2. Enter the first few letters of the name that you want to find.
3. Select the contact you want from the Contacts list.
4. Scroll to a number and press [] to dial or [**OK**] to edit the contact information.

Using contact options

While viewing the contact list, press <**Options**> to access the following options:

- **View:** access contact information.

- **Add contact:** add a new contact in Contacts.
- **Voice call:** make a voice call.
- **Video call:** make a video call.
- **Create message:** send an SMS message, MMS message, or e-mail.
- **Edit:** edit contact information.
- **Duplicate:** make a copy of the contact.
- **Delete:** delete the currently selected contact or the contacts you want.
- **Save to My files:** save the contact as a name card format in the **Other files** folder.
- **Send contact details:** send the contact details via MMS, e-mail, or Bluetooth.
- **My contact details:** access your name card.
- **Assign speed dial:** assign a speed dial number. If the selected contact has more than one phone number, the speed dial number is assigned to the first saved number by default.

- **Copy to phone/Copy to SIM:** copy the selected contact or the contacts you want to the phone's memory or the USIM/SIM card.
- **Move to phone/Move to SIM:** move the selected contact or the contacts you want to the phone's memory or the USIM/SIM card.
- **Service number:** display the list of Service Dialling Numbers (SDN) assigned by your service provider, including emergency numbers, directory enquiries, and voicemail server number. This option is available only when supported by your USIM/SIM card.
- **FDN contacts:** display the FDN contact list.
- **Copy to FDN contacts:** copy the selected contact to the FDN contact list.
- **Print via Bluetooth:** print contact information via a Bluetooth-compatible printer. Some printers may not be compatible with the phone.
- **Contact settings:** change the default settings for Contacts. ► p. 105
- **Memory status:** check the number of contacts you have stored in the phone's memory and on the USIM/SIM card.

Organising contacts in a group

You can organise your contacts in caller groups.

Creating a caller group

1. Scroll to the **Groups** tab.
2. Press <**Options**> and select **Create group**.
3. If you are using a USIM card, select a location.
4. Enter a name for the group and press <**Save**>.

Adding members to a caller group

1. Select a group.
2. Press <**Options**> and select **Add member**.
3. Press [**OK**] to select the contacts you want and then <**Add**>.

Managing caller groups

While viewing the group list, press <**Options**> to access the following options:

- **View:** display the members of the selected group.
- **Create group:** add a new group.
- **Create message:** send an SMS message, MMS message, or e-mail.
- **Delete:** delete the selected group. Group members, however, will not be deleted from Contacts.
- **Rename:** change the group name.
- **Group settings:** assign an image and ringtone to the selected group in the phone's memory.

Media player *(Menu 3)*

You can play music and video files.

To access this menu, press [**OK**] in Idle mode and select **Media player**.

Downloading or receiving music or video files

You can play the following types of files on your phone.

- Music: MP3, AAC, 3GA, M4A
- Video: 3GP, MP4

Use the following methods to save music or video files to your phone's memory or a memory card:

- Download from the wireless web ► p. 47
- Download from a computer using Samsung PC Studio ► Samsung PC Studio User's Guide
- Receive via an active Bluetooth connection ► p. 109
- Copy to a memory card and insert the card into the phone ► p. 25

Playing music files

Using the Media player, play music files. To enjoy high quality music, you can use an optional Bluetooth stereo headset.

- Bluetooth mono headsets are not compatible with the media player.

Creating a music play list

1. Scroll to the **Music** tab.
2. Press **<Options>** and select **Create playlist**.
3. Enter a name for the play list and press **<Save>**.
4. Select the play list you just created.
5. Press **<Options>** and select **Add Playlist** or **Files**.
6. For **Playlist**, select the play list you want.
For **Files**, press **[OK]** to select the files you want and press **<Add>**.

Playing a music file

1. From the play list screen, press **<Options>** and select **Play via**.
2. Select **Phone** to use the phone speaker.

Select **Bluetooth stereo headset** to use a Bluetooth stereo headset, and then search for and connect the phone to the headset.

During playback, use the following keys:

| Key | Function |
|-----------|--|
| OK | Pauses or resumes playback. |
| Up | Opens the play list. |
| Left | Returns to the previous file. Moves backward in a file when held down. |
| Right | Skips to the next file. Skips forward in a file when held down. |
| Down | Stops playback. |
| ▲/▼ | Adjusts the volume. |
| 1 | Turns 3D sound on or off. This option is only available when a headset is connected. |
| 3 | Changes the repeat mode. |
| 6 | Sets the music player to play tracks in random order. |

Using music player options

From the music player screen, press **<Options>** to access the following options:

- **Pause/Resume:** pause or resume playback.
- **Stop:** stop playback.
- **Play via:** play the selected file via the phone speaker or a Bluetooth stereo headset.
- **Transfer to Bluetooth stereo headset/Transfer to phone:** play the selected file via the phone speaker or a Bluetooth stereo headset.
- **Open playlist:** open the play list.
- **Jump to track time:** specify a point in a file you would like to move to.
- **Details:** access the file properties.
- **Settings:** change the default settings for playing music files:
 - Repeat:** select a repeat mode.
 - Shuffle:** set the music player to play tracks in random order.
 - 3D sound:** turn 3D sound on or off. This option is only available when a headset is connected.

Visualization type: select a playback animation.

Volume: select a volume level.

Using play list options

On the Media player screen, press **<Options>** to access the following options:

- **Open:** open the selected play list.
- **Play via:** play the music files stored in the selected play list via the phone speaker or a Bluetooth stereo headset.
- **Create playlist:** add a new play list.
- **Rename:** change the name of the play list.
- **Delete:** delete the selected play list or all play lists.
- **Player settings:** change the default settings for playing music files:
 - Repeat:** select a repeat mode.
 - Shuffle:** set the music player to play tracks in random order.
 - 3D sound:** turn 3D sound on or off. This option is only available when a headset is connected.
- **Visualization type:** select a playback animation.

Volume: select a volume level.

Show controller: set the music player to display or hide the controller.

- **VOD settings:** select a connection profile to be used for accessing a video streaming server. You can also create or edit a profile. ► p. 110

Using music file options

1. On the Media player screen, select a play list.
 2. Press <**Options**> to access the following options:
 - **Play via:** play the selected file via the phone speaker or a Bluetooth stereo headset.
 - **Add:** add a new play list or music files to the play list.
 - **Move track in playlist:** move the selected file to the position you want within the play list.
 - **Add to playlist:** add the selected file or the files you want to another play list.
- **List by:** change the sort order of the list.
 - **Send via:** send the file via MMS, e-mail, or Bluetooth.
 - **Set as:** set the file as a ringtone for a voice call or video call, or as a ringtone for a Contacts entry.
 - **Lock/Unlock:** lock the file to prevent it from being moved, deleted, and renamed or unlock the file.
 - **Remove:** remove the selected file or all files from the play list.
 - **Details:** access the file properties.

Downloading music files

1. Select **All music**.
2. Select **More music**. You can connect to the preset website by your service provider.
3. Search for the file you want and follow the onscreen instructions to download it.

Playing video clips

Using the Media player, you can play video clips.

Playing a video clip

1. From the Media player screen, scroll to the **Video** tab.
2. Select a file. The video player opens and the video plays.

During playback, use the following keys:

| Key | Function |
|-------|---|
| OK | Pauses or resumes playback. |
| Left | Returns to the previous file. Moves backward in a file when held down. |
| Right | Skips to the next file. Skips forward in a file when held down. |
| ▲/▼ | Adjusts the volume. |
| Down | Stops playback. |
| 3 | Changes the repeat mode. |
| 6 | Sets the video player to play tracks in random order. |

Using video player options

From the video player screen, press <**Options**> to access the following options:

- **Pause/Resume:** pause or resume playback.
- **Stop:** stop playback.
- **Play:** play the file.
- **Jump to track time:** specify a point in a file you would like to move to.
- **Show controller/Hide controller:** set the video player to display or hide the controller.
- **Details:** access the file properties.
- **Settings:** change the default settings for playing video files:
 - Repeat:** select a repeat mode.
 - Shuffle:** set the video player to play files in random order.
 - Volume:** select a volume level.
 - Show controller:** set the video player to display or hide the controller.
- **Horizontally:** rotate the file 90 degree and play it on a full screen. To return to the normal screen, press the right soft key.

Using video file options

From the file list, press **<Options>** to access the following options:

- **Play:** play the selected file.
- **Send via:** send the file via MMS, e-mail, or Bluetooth.
- **Lock/Unlock:** lock the file to prevent it from being moved, deleted, and renamed or unlock the file.
- **Details:** access the file properties.

Downloading video files

1. Select **More videos**. You can connect to the preset website by your service provider.
2. Search for the file you want and follow the onscreen instructions to download it.

Internet *(Menu 4)*

The web browser on your phone allows you to access the wireless web. Using the web browser, you can access up-to-date information and a wide variety of media contents, such as wallpapers, ringtones, and music files.

To access this menu, press **[OK]** in Idle mode and select **Internet**.

Go to homepage *(Menu 4.1)*

Use this menu to connect your phone to the network and load the homepage of the wireless web service provider.

Navigating the web browser

| To | Press |
|------------------------------|--|
| scroll through browser items | [Up] or [Down] . |
| select a browser item | [OK] or <Select> . |
| return to the previous page | <Back> . |

Using browser options

From any web page, press <**Options**> to access the following browser options:

- **Go to:** go to the currently linked web page.
- **Go:** move backward or forward through pages in history.
- **Reload:** reload the current page with updated information.
- **Desktop view/Smart-fit view:** change the display mode of the browser.
- **Page Size:** change the page size.
- **Go to homepage:** return to the homepage.
- **Add to Bookmarks:** bookmark the current page.
- **View bookmarks:** access the bookmark list.
- **Send URL:** send the URL of the current page as a data file via MMS, e-mail, or Bluetooth.
- **Enter URL:** enter a URL address manually.
- **Copy URL:** send the URL address of the web page by adding it to the message text via SMS, MMS, or e-mail.
- **Save:** save the image of the current web page or the current page.
- **Saved pages:** access the list of web pages you have saved.
- **History:** access the list of web pages you have accessed.
- **Advanced:** change the various settings for the browser.
 - **Clear cache:** clear the cache. The cache is a temporary memory site that stores recently accessed web pages.
 - **Empty cookies:** delete cookies. Cookies are pieces of personal information sent to a web server while navigating the web.
 - **Cookie options:** set whether or not cookies are stored. If you select **Prompt**, the phone will ask you to save the cookies of the current page.
 - **Preferences:** change the settings for the web browser to suit your preference.


Certificates: access certificate information.

Page details: access the page properties.

Browser settings: select a connection profile to be used for connecting to the Internet. You can also create or edit a profile. ▶ p. 110

About browser: access version and copyright information about the browser.

Exiting the web browser

Press [] to end the network connection and exit the browser.

Enter URL (Menu 4.2)

Use this menu to manually enter a URL address and access the associated web page.

You can add the entered URL to the bookmark list by selecting **Add bookmark**.

Bookmarks (Menu 4.3)

Use this menu to save URL addresses in order to quickly access web pages, or access the preset bookmarks.

Adding a new bookmark

1. Press <**Options**> and select **Add bookmark**.
2. Enter a title and press [Down].
3. Enter a URL address and press <**Save**>.

Using bookmark options

From the bookmark list, press <**Options**> to access the following options:

- **Go to:** access the bookmarked web page.
- **Enter URL:** enter a URL address manually.
- **Edit bookmark:** edit the URL address and title of the bookmark, if you selected an added one.
- **Add bookmark:** add a new bookmark.
- **Send URL:** send the URL address of the bookmark as a data file via MMS, e-mail, or Bluetooth.

- **Copy URL:** send the URL address of the bookmark by adding it to the message text via SMS, MMS, or e-mail.
- **Save to My files:** save the URL address as a data file in the **Other files** folder.
- **Delete:** delete the selected bookmark or all bookmarks, except for the preset ones.

Saved pages *(Menu 4.4)*

You can access the list of pages you have saved. Select a page name from the list to access the corresponding web page.

From the saved page list, press **<Options>** to access the following options.

- **View:** access the selected web page.
- **Rename:** change the saved page name.
- **Delete:** delete the selected web page or all pages.

History *(Menu 4.5)*

You can access the list of pages you have accessed. Select a URL from the list to access the corresponding web page.

From the history list, press **<Options>** to access the following options:

- **Go to:** access the selected web page.
- **Delete:** delete the selected web page or all pages.
- **Details:** access the properties of the web page.

Advanced *(Menu 4.6)*

You can access the advanced browser options.

- **Clear cache:** clear the cache. The cache is a temporary memory site that stores recently accessed web pages.
- **Empty cookies:** delete cookies. Cookies are pieces of personal information sent to a web server while navigating the web.
- **Cookie options:** set whether or not cookies are stored. If you select **Prompt**, the phone will ask you to save the cookies of the current page.
- **Preferences:** change the settings for the web browser to suit your preference.

- **About browser:** access version and copyright information about the browser.

Browser settings (Menu 4.7)

Use this menu to select a connection profile to be used for connecting to the Internet. You can also create or edit a profile.

- ▶ p. 110

Messaging (Menu 5)

Use the **Messaging** menu to send and receive text messages, multimedia messages, and e-mails. You can also access push messages, voicemails, broadcast messages, and configuration messages.

To access this menu, press **[OK]** in Idle mode and select **Messaging**.

- You can quickly access this menu by pressing <✉> in Idle mode.

Create new message (Menu 5.1)

Use this menu to create and send text messages, multimedia messages, or e-mails.

Message (Menu 5.1.1)

You can create and send text messages and multimedia messages.

If you add data or subject to a text message while composing, the phone will automatically send the message via MMS.

Creating and sending an SMS message

Short Message Service (SMS) allows you to send or receive text messages.

- The maximum number of characters allowed in a short message varies by Operator. If your message exceeds the maximum number of characters, the phone will split the message.

1. Enter your message.

- You can use various message composing options by pressing <**Options**> in each field.
 - ▶ next section
- If you add a media file, subject or text to the message or use the **Change to MMS** option, you can send the message via MMS.

2. When you have finished, press **[Up]** to move to the recipient field.

3. Enter a destination number.
To send the message to more than one recipient, press [Right] and enter additional numbers.
4. Press <Options> and select **Send** to send the message.

Using options while composing an SMS message

While composing a message, press <Options> to access the following options:

- **Send:** send the message.
- **Text:** highlight the text you want and cut, copy, or remove it.
- **Insert:** insert a text template, emoticon, Contacts entry, or bookmarked URL address into text.
- **Add recipients:** add destination numbers to the message.
- **View recipient list:** view the added destination numbers.
- **Change to MMS:** send the message via MMS.
- **Input language:** change the language to be used in T9 input mode.

- **Input method:** change the text input mode.
- **Sending options:** change the message settings. ▶ p. 63
- **Save to Drafts:** save the message in the **Drafts** folder.
- **Save as template:** save the message in the **Text templates** folder.

Creating and sending an MMS message

Multimedia Message Service (MMS) delivers messages containing a combination of text, image, video, and sound, from phone to phone or from phone to e-mail.

1. Enter your message.

You can use various message composing options by pressing <Options> in each field. ▶ next section

2. Press <Options> and select **Add subject**.
3. Press <OK> to send the message via MMS.
4. Enter the message subject and press [Down] to move to the text field.

5. Press <**Options**> and select **Add item**, **Create item** or **Add attachment**.
6. Add a media file, Contacts entry, calendar item, or bookmark item to the message.

Depending on the file type or DRM (Digital Rights Management) system, some files may not be able to be forwarded.

7. When you have finished, press [Up] until the recipient field highlights.
8. Enter a phone number or e-mail address.
To send the message to more than one recipient, press [Right] and enter additional numbers or e-mail addresses.
9. Press <**Options**> and select **Send** to send the message.

Using options while composing an MMS message

While composing a message, press <**Options**> to access the following options:

- **Send**: send the message.
- **Add recipients**: add destination numbers or e-mail addresses to the message.
- **View recipient list**: view the added destination numbers or e-mail addresses.
- **Preview**: view the message as it will be shown on the recipient's phone.
- **Text**: highlight the text you want and cut, copy, or remove it.
- **Add item**: add a file stored in the **My Files** folder.
- **Add attachment**: add a media file, Contacts entry, calendar item, or bookmark item in data attachment format.
- **Create item**: take a photo, record a sound or a video and add it to the message.
- **Insert**: insert a text template, emoticon, Contacts entry, or bookmarked URL address into text.
- **View attachment**: view the list of the files you added.

- **Change to SMS:** send the message via SMS.
- **Add page:** add a new page.
- **Delete page:** delete the selected page.
- **Input language:** change the language to be used in T9 input mode.
- **Input method:** change the text input mode.
- **Edit style:** change the page properties.
- **Add subject:** add the message subject.
- **Remove subject:** remove the message subject.
- **Sending options:** change the message sending settings. ▶ p. 64
- **Save to Drafts:** save the message in the **Drafts** folder.
- **Save as template:** save the message in the **MMS templates** folder.

Email (Menu 5.1.2)

You can send and receive e-mails that include text, audio, and images. To use this feature, you need to subscribe to an e-mail service and set up your e-mail account.

▶ p. 67

Creating and sending an e-mail

1. Enter your message.

You can use various message composing options by pressing **<Options>** in each field. ▶ next section

2. Press **<Options>** and select **Add subject**.
3. Enter the subject of the e-mail.
4. Press **<Options>** and select **Add item** or **Create item**.
5. Add a media file, Contacts entry, calendar item, or a bookmark item to the message.

Depending on the file type or DRM (Digital Rights Management) system, some files may not be able to be forwarded.

6. When you have finished, press [Up] until the recipient field highlights.
7. Enter an e-mail address.

To send the e-mail to more than one recipient, press [Right] and enter additional e-mail addresses.

8. Press <**Options**> and select **Send** to send the e-mail.

Using options while composing an e-mail

While composing an e-mail, press <**Options**> to access the following options:

- **Send:** send the e-mail.
- **Text:** highlight the text you want and cut, copy, or remove it.
- **Add recipients:** add destination e-mail addresses to the e-mail.
- **View recipient list:** view the added destination e-mail addresses.
- **Attachment:** open or remove the attached item.
- **Add subject:** add the e-mail subject.
- **Remove subject:** remove the e-mail subject.
- **Add item:** add a media file, Contacts entry, calendar item, or bookmark item in data attachment format.
- **Create item:** take a photo or record a sound or a video, and add it to the e-mail.





- **Insert:** insert a text template, emoticon, Contacts entry, or bookmarked URL address into text.
- **Input language:** change the language to be used in T9 input mode.
- **Input method:** change the text input mode.
- **Sending options:** change the e-mail sending options. ▶ p. 66
- **Save to Drafts:** save the e-mail in the **Drafts** folder.
- **Save as text template:** save the e-mail in the **Text templates** folder.




Inbox (Menu 5.2)

This folder stores all types of messages you have received, except for e-mails.

Viewing a message

The following icons may appear on the list to show the message type:

-  SMS message
-  MMS message
-  MMS notification
-  Push message from web servers

-  Configuration message, containing network parameters from your service provider
 -  Broadcast message from your service provider
 -  USIM/SIM
- Depending on the DRM (Digital Rights Management) system, messages having web content may not be able to be forwarded.
 - A ! icon next to a message means that the message is of high priority. A grey-coloured message icon indicates low priority.

Using message options

While viewing a message, press <Options> to access the following options:

SMS messages

- **Voice call:** make a voice call to the selected number.
- **Video call:** make a video call to the selected number, if the 3G service is available.
- **Go to URL:** connect to the URL in the message.
- **Add to:** add the highlighted web link to Contacts or the bookmark list.
- **Add to Contacts:** save the sender's phone number or the selected number to Contacts.
- **Add to Bookmarks:** save the selected web link to the bookmark list.
- **Create message:** send an SMS or MMS message to the selected number, or an MMS message or e-mail to the selected e-mail address.
- **Reply:** send a reply to the sender.
- **Forward:** forward the message to other people.
- **Call sender:** call to the message sender.
- **Delete:** delete the message.
- **Move to SIM/Move to phone:** move the message between the phone's memory and the USIM/SIM card.
- **Move to My folder:** move the selected message to the **My folder**.

- **Print via Bluetooth:** print the message via a Bluetooth-compatible printer. Some printers may not be compatible with the phone.
- **Lock/Unlock:** lock the message to prevent it from being deleted, moved, and sent or unlock the file.

MMS messages

- **Retrieve:** retrieve the message from the server.
- **Voice call:** make a voice call to the selected number.
- **Video call:** make a video call to the selected number, if the 3G service is available.
- **Go to URL:** connect to the URL in the message.
- **Add to Bookmarks:** save the selected web link to the bookmark list.
- **Add to:** add the highlighted web link to Contacts or the bookmark list.
- **Create message:** send an SMS or MMS message to the selected number, or an MMS message or e-mail to the selected e-mail address.
- **Play:** open the selected attachment.
- **Reply:** send a reply to the sender.
- **Reply to all:** reply to the sender and all of other recipients.
- **Forward:** forward the message to other people.
- **Call sender:** call to the message sender.
- **Activate key:** get a new licence key when the key for the selected DRM file expires.
- **Reactivate key:** get another licence key even when the key for the selected DRM file has not expired.
- **Delete:** delete the message.
- **Move to My folder:** move the selected message to the **My folder**.
- **Save as template:** save the message as a template.
- **Save items:** save media content from the message to the phone's memory.
- **Add to Contacts:** save the selected number or e-mail address to Contacts.
- **Lock/Unlock:** lock the message to prevent it from being deleted, moved, and sent or unlock the file.

- **Details:** access the message properties.
- **Print via Bluetooth:** print the message via a Bluetooth-compatible printer. Some printers may not be compatible with the phone.

Configuration messages

- **Install:** apply the configuration specified in the message to your phone.
- **Delete:** delete the message.
- **Move to My folder:** move the selected message to the **My folder**.

Broadcast messages

- **Voice call:** make a voice call to the selected number.
- **Video call:** make a video call to the selected number, if the 3G service is available.
- **Go to URL:** connect to the URL in the message.
- **Add to Bookmarks:** save the selected web link to the bookmark list.
- **Add to:** add the highlighted web link to Contacts or the bookmark list.

- **Create message:** send an SMS or MMS message to the selected number, or an MMS message or e-mail to the selected e-mail address.
- **Save:** save the message to the phone's memory.
- **Add to Contacts:** save the selected number or e-mail address to Contacts.
- **Delete:** delete the message.

Push messages

- **Go to URL:** connect to the URL specified in the message.
- **Delete:** delete the message.
- **Move to My folder:** move the selected message to the **My folder**.

Email inbox *(Menu 5.3)*

This folder stores e-mails that you have received.

Viewing received e-mails

1. Press **<Options>** and select **Download**.
The phone checks the e-mail server and downloads new e-mails.
2. Select an e-mail or a header.

3. If the e-mail has more than one page, press [▲/▼] to scroll through pages one by one.
4. Select an attached file to view or play it.

Depending on the DRM (Digital Rights Management) system, messages having web content may not be able to be forwarded.

Using e-mail options

While viewing the e-mail or header, press <**Options**> to access the following options:

- **Retrieve:** retrieve the body of the e-mail from the e-mail server.
- **Voice call:** make a voice call to the selected number.
- **Video call:** make a video call to the selected number, if the 3G service is available.
- **Go to URL/Go to RTSP:** connect to the URL in the message.
- **Create message:** send an SMS or MMS message to the selected number, or an MMS message or e-mail to the selected e-mail address.
- **Add to:** add the highlighted web link to Contacts or the bookmark list.
- **Add to Contacts:** save the selected number or e-mail address to Contacts.
- **Reply:** send a reply to the sender.
- **Reply to all:** reply to the sender and all of other recipients.
- **Forward:** forward the e-mail to other people.
- **Delete:** delete the selected e-mail from the phone's memory or from both the phone's memory and the e-mail server.
- **View/Play:** view or open an attached file.
- **Save items:** save media content from the e-mail to the phone's memory.
- **Register to Contacts:** register the selected name card to a Contact entry.
- **Register to Calendar:** register the selected calendar item to Calendar.
- **Register to Bookmarks:** register the selected bookmark item to the bookmark list.

- **Register to Memo:** register the selected memo to Memo.
- **Register to Tasks:** register the selected task item to Tasks.
- **Move to My folder:** move the selected e-mail to the **My folder**.
- **Block:** add the sender's e-mail address or the e-mail subject to the blocking list.
- **Print via Bluetooth:** print the e-mail via a Bluetooth-compatible printer. Some printers may not be compatible with the phone.
- **Details:** access the e-mail properties.
- **Lock/Unlock:** lock the message to prevent it from being deleted, moved, and sent or unlock the file.

Drafts (Menu 5.4)

This folder stores messages you have saved to send them at a later time.

From the message list, press **<Options>** to access the following options:



- **Edit:** edit the selected message.
- **Send:** send the message.

- **Preview:** preview the message.
- **Delete:** delete the selected message or the messages you want.
- **Move to My folder:** move the selected message or the messages you want to the **My folder**.
- **Sort by:** change the sort order of the message list.
- **Lock/Unlock:** lock the message to prevent it from being deleted, moved, and sent or unlock the file.
- **Details:** access the message properties.

Outbox (Menu 5.5)

This folder stores messages that the phone is attempting to send or has failed to send.

The following icons on the message list indicates the sending status:

-  Being sent
-  Failed to be sent

From the message list, press **<Options>** to access the following options:

- **View:** open the selected message.
- **Send again:** resend the message.

- **Edit:** edit the message.
- **Delete:** delete the selected message or the messages you want.
- **Sort by:** change the sort order of the message list.
- **Lock/Unlock:** lock the message to prevent it from being deleted, moved, and sent or unlock the file.
- **Details:** access the message properties.

Sentbox (Menu 5.6)

This folder stores messages that you have sent.

From the message list, press <**Options**> to access the following options:

- **View:** open the selected message.
- **Forward:** forward the message to other people.
- **Delete:** delete the selected message or the messages you want.
- **Move to SIM/Move to phone:** move the message between the phone's memory and the USIM/SIM card.

- **Move to My folder:** move the selected message or the messages you want to the **My folder**.
- **Sort by:** change the sort order of the message list.
- **Lock/Unlock:** lock the message to prevent it from being deleted, moved, and sent or unlock the file.
- **Details:** access the message properties.

My folder (Menu 5.7)

This folder stores message that you have moved to this folder using the **Move to My folder** option while viewing a message list.

Creating a new folder

1. Press <**Options**> and select **Create folder**.
2. Enter a folder name and press <**OK**>.

Using folder options

From the folder list, press <**Options**> to access the following options:

- **Open:** open the selected folder.
- **Create folder:** add a new folder.
- **Rename folder:** change the folder name.

- **Delete folder:** delete the selected folder.

Templates *(Menu 5.8)*

Use this menu to create, edit, and send SMS templates and MMS templates.

MMS templates *(Menu 5.8.1)*

You can create MMS templates so that you can use them in composing an MMS message.

Creating a template

1. Press <**Add new**>, or press <**Options**> and select **Add new**, if one has been already stored.
2. Create a template as you would when creating an MMS message.
3. Press <**Options**> and select **Save as template** to save the template.

Using template options

From the template list, press <**Options**> to access the following options:

- **View:** open the selected template.
- **Send:** send the selected template via MMS.

- **Add new:** add a new template.
- **Edit:** edit the selected template.
- **Delete:** delete the selected template or all templates.

Text templates *(Menu 5.8.2)*

You can create SMS templates with the sentences you use frequently so that you can retrieve and insert them when composing an SMS message.

Creating a template

1. Press <**Add new**>, or press <**Options**> and select **Add new**, if one has been already stored.
2. Enter a message and press [OK].

Using template options

From the template list, press <**Options**> to access the following options:

- **Send:** create and send a new message using the template via SMS, MMS, or e-mail.
- **Add new:** add a new template.
- **Edit:** change the selected template.
- **Delete:** delete the selected template or all templates.

Delete all (Menu 5.9)

Use this menu to delete messages in each message type at once.

1. Press [**OK**] to select the message types to be cleared.
Pressing [Right] displays the message types so that you can specify the ones to be cleared.
2. Press <**Delete**>.
3. Press [**OK**] to remove the check mark from the message types.
4. Press <**Yes**> to confirm the deletion.

Messaging settings (Menu 5.0)

Use this menu to set up various options for using messaging services.

SMS (Menu 5.0.1)

You can configure SMS settings.

- **Common settings:** set up the options for sending SMS messages:
 - Network selection:** select **Circuit switch** or **Packet switch**.
 - Character support:** select a character encoding type. When you select

Automatic, the phone switches the encoding type from GSM alphabet to Unicode if you enter a unicode character. Use of Unicode encoding will reduce the maximum number of characters in a message to about half. If this menu is not shown, your phone provides the automatic encoding by default.

Reply path: allow recipients to reply to you through your SMS server.

Delivery report: set the network to inform you when your message have been delivered.

Keep a copy: leave the copies of your messages in the **Sentbox** folder after sending.

- **SMS centre settings:** select a profile to be used for SMS or set up the SMS server. Press <**Options**> and select **Edit** to access the following properties:
 - Centre address:** store or change the number of your message server.
 - Validity period:** set the length of time your messages are stored in the SMS server.

Default type: set the default message type. The network can convert messages into the selected format.

Name: enter a profile name.

MMS (Menu 5.0.2)

You can configure MMS settings.

- **Sending options:** set up the options for sending MMS messages:

Priority: set the priority level of messages.

Expiration: set the length of time your messages are stored in the MMS server.

Delivery: set a time delay before messages are sent.

Hide address: set your address to be hidden from the recipient's phone.

Request delivery report: set the network to inform you when your messages have been delivered.

Request read report: send a read-reply request along with your messages.

Keep a copy: leave copies of your messages in the **Sentbox** folder after sending.

Add my namecard: allow your contact information to be attached to MMS messages. You must have created a name card. ▶ p. 40

- **Receiving options:** set up the options for receiving MMS messages:

Home network: determine if your phone retrieves new messages automatically when you are in your home service area.

Foreign network: determine if your phone retrieves new messages automatically when you are roaming in another network.

Reception within your home network or while roaming has the following options:

- **Auto download:** the phone automatically retrieves messages from the server.
- **Manual:** the phone receives notifications first from the server. Use the **Retrieve** option to manually retrieve new messages.

- **Restricted** (Foreign network only): the phone receives notifications first from the server. When you attempt to download new messages, the phone informs you of additional charges.

- **Reject**: the phone rejects all messages.

Send delivery report: set the network to inform the sender when a message has been delivered to you.

Send read report: determine whether or not the phone sends a read-reply when an incoming message has been read.

Reject unknown: reject messages from unknown senders.

Reject advertisement: reject advertisements.

- **MMS profiles**: select a connection profile to be used for MMS. You can also create or edit a profile. ► p. 110
- **Message size**: select the maximum file size of MMS attachment. This file size may vary, depending on the country.

- **Auto resize image**: select the maximum image size of an MMS attachment. If you select a larger image than the maximum, the phone automatically resizes it.

- **Creation mode**: select MMS creation mode:

Restricted: you are not able to create and send messages using unsupported file formats.

Warning: the phone informs you when you create and send a message using unsupported file formats.

Free: you can create and send messages adding unsupported file formats.

- **Default style**: customise the default settings for displaying a received MMS message on your phone:

Font colour: select a font colour.

Font style: select a font style.

Background colour: select a background colour.

Page duration: select a length of time the display shows one page in a message.

Email (Menu 5.0.3)

You can configure e-mail settings.

- You cannot change e-mail profile and account settings while an e-mail is being sent or retrieved.

- **Sending options:** set up the options for sending e-mails:

From: enter a sender name.

Send account: select the default account.

Priority: change the priority level of your e-mails.

Keep a copy: leave copies of your e-mails in the **Sentbox** folder after sending.

Include body when replying: set whether the phone includes the original e-mail text in a reply.

Request read report: request a report from each recipient as to when your e-mail was read by the recipient.

Request delivery report: set the network to inform you when your e-mail has been delivered.

Add my namecard: allow your contact information to be attached to e-mails. You must have created a name card.

▶ p. 40

Add signature: allow your signature to be inserted to e-mails.

Input signature: make your signature.

- **Receiving options:** set up the options for receiving e-mails:

Set download limit: determine the maximum size for incoming e-mails. Your phone will reject e-mails that exceed the specified size.

Auto polling: set the phone to automatically check the e-mail server to download e-mails at the specified intervals.

Polling frequency: set how often the phone checks the e-mail server for automatic polling.

Send read report: determine whether or not the phone sends a read-report to a sender.

Block address: specify e-mail addresses to reject e-mails from those addresses, and activate or deactivate mail blocking.

Block subject: reject e-mails which contain subjects you specify, and activate or deactivate mail blocking.

- **Email profiles:** select a network connection profile to be used for sending and receiving e-mails. You can also create or edit a profile. ► p. 110
- **Email accounts:** select an account to be used and set up e-mail accounts. Press <**Options**> and select **Edit** to access the following options:

Account name: enter a name for the currently selected account.

SMTP server: enter the IP address or domain name of the outgoing e-mail server.

SMTP port: enter the SMTP port number.

Use SSL: use the SSL (Secure Sockets Layer) protocol for accessing the SMTP server.

Email retrieval server type: select the protocol for the incoming e-mail server. The remaining options depend on the protocol type setting.

POP3 server/IMAP4 server: enter the IP address or domain name of the POP3 or IMAP4 server.

POP3 port/IMAP4 port: enter the POP or IMAP4 port number.

Use SSL: use the SSL (Secure Sockets Layer) protocol for accessing the POP3 or IMAP4 server.

IMAP4 retrieval option (IMAP4 protocol only): set whether the phone retrieves only new messages or all messages.

Keep on server: leave copies of e-mails in the server after retrieving.

My address: enter your e-mail address.

User name: enter the user name for POP3 or IMAP4 server connection.

Password: enter the password for POP3 or IMAP4 server connection.

Use POP before SMTP authentication (POP3 protocol only): connect to the POP3 server before connecting to the SMTP server to send e-mails.

Use SMTP authentication: enable SMTP authentication, which requires the user to log in before sending e-mails.

Same as POP3/IMAP4: select if you want the SMTP server to have the same parameters as the POP3 or IMAP4 server.

User name: enter the user name for SMTP server connection.

Password: enter the password for SMTP server connection.

Voicemail (Menu 5.0.4)

Use this menu to set the number of your voicemail server.

- You must store the voicemail server number before accessing the server. Your service provider can give you the number.

Push message (Menu 5.0.5)

You can change the settings for receiving push messages from the wireless web server.

- **Receiving option:** enable or disable the reception of push messages.
- **Service loading:** set whether your phone automatically launches the web browser to access a push message as it comes in.

Broadcast (Menu 5.0.6)

Use this menu to change the settings for the broadcast message service.

- **Activation:** enable or disable the reception of broadcast messages.
- **Receiving channels:** indicate the channels from which you wish to receive broadcast messages.
Please contact your service provider for further details.
- **My channels:** add a new channel if you selected the **My channels** option. Press **<Create>**. Set the channel ID information and title.
- **Language:** select the languages in which broadcast messages display.

Memory status *(Menu 5. *)*

Use this menu to view the number of messages or the amount of memory currently in use for each message type in each folder. You can also delete a message by selecting it from this menu and pressing **<Delete>**.

My files *(Menu 6)*





The **My files** menu allows you to access images, videos, music files, and sounds stored in the phone's memory or on a memory card.

To access this menu, press **[OK]** in Idle mode and select **My files**.

Tips for Digital Rights Management

As a result of the Digital Rights Management (DRM) system, some of the media items you download from the Internet or receive by MMS may require a licence key to access them. You can acquire the key from the website which owns the rights to the content; use the **Activate key** option.

Note the following icons on the list:

-  : Forwardable item with a valid key.
-  : Forwardable item without a valid key.
-  : Unforwardable item with a valid key.
-  : Unforwardable item without a valid key.

Your phone supports only count-based or unlimited-access DRM files.

Switching between the phone's memory and a memory card

You can access data stored on a memory card, if a memory card is inserted.

From the My files screen, scroll to the **Card** tab by pressing **[Left]** or **[Right]**.

Select the folder you want and open files.

Images

Use this menu to access photos you have taken and images you have downloaded, received in messages, or imported from your computer.

Viewing an image

1. Scroll to an image folder.
2. Select an image.

Viewing a slide show

You can view your images as a slide show, a sequential presentation of each image in the current folder.

1. While viewing an image, press **<Options>** and select **Slide show**.
The slide show begins.
2. Press **<Back>** to stop the slide show.

Editing an image

1. While viewing an image, press **<Options>** and select **Edit**.
2. Press **<Options>** and edit the photo using the following options:
 - **Save as**: save the file as a different name.
 - **Effects**: change the colour tone or apply a special effect.
 - **Partial effects**: access the following advanced editing options:
 - Partial blur**: adjust the clarity of the image selected by a square box.

Redeye repair: remove the occurrence of red-eye on the image.

- **Adjust**: adjust the image brightness, contrast, or colour balance.
 - **Transform**: change the image size or image orientation.
 - **Crop**: select a variously sized and shaped section of the image and crop the image.
 - **Insert**: apply a decorative frame, or add an image clip, emoticon, or text.
 - **Set as**: set the image as your wallpaper for the display or a caller ID image for a Contacts entry.
 - **Send via**: send the file via MMS, e-mail, or Bluetooth.
 - **Print via**: print the image by connecting the phone to a printer via USB or Bluetooth. Some printers may not be compatible with the phone.
 - **Undo**: remove the applied effect.
3. When you have finished, press **<Done>** or press **<Options>** and select **Done**.
 4. Press **[OK]**.

5. Select a memory location, if a memory card is inserted.
6. Enter a photo name and press <**Save**>.

Using image options

While viewing a file, press <**Options**> to access the following options:

- **Zoom:** zoom in or out.
- **Send via:** send the file via MMS, e-mail, or Bluetooth.
- **Set as:** set the image as your wallpaper for the display or a caller ID image for a Contacts entry.
- **Delete:** delete the file.
- **Rename:** change the file name.
- **Edit:** edit the image and save it as a different file.
- **Activate key:** get a new licence key when the key for the selected DRM file expires.
- **Reactivate key:** get another licence key even when the key for the selected DRM file has not expired.
- **Bluetooth visibility:** share the selected file with other Bluetooth devices.

- **Slide show:** view all images as a slide show.
- **Print via:** print the image by connecting the phone to a printer via USB or Bluetooth. Some printers may not be compatible with the phone.
- **Lock/Unlock:** lock the file to prevent it from being moved, deleted, and renamed or unlock the file.
- **Details:** access the file properties.

Downloading images

1. Select the **My photos** folder.
2. Select **More pictures**. You are connected to the website preset by your service provider.
3. Search for the file you want and follow the onscreen instructions to download it.

Videos

Use this menu to access video clips you have recorded, downloaded, received in messages, or imported from your computer.

- Video clips recorded on other devices, such as camcorders, may not play correctly.

Playing a video clip

1. Scroll to a video folder.
2. Select a video clip. The media player opens. ▶ p. 46

Using video options

From the video list, press <**Options**> to access the following options:

- **Play**: play the video clip.
- **Send via**: send the file via MMS, e-mail, or Bluetooth.
- **Move**: move the selected file or the files you want to another folder.
- **Copy**: copy the selected file or the files you want to another folder.
- **Activate key**: get a new licence key when the key for the selected DRM file expires.
- **Reactivate key**: get another licence key even when the key for the selected DRM file has not expired.
- **Delete**: delete the selected file or the files you want.
- **Rename**: change the file name.

- **Record video**: switch to Record mode to record a video.
- **Create folder**: create a new folder.
- **List by**: change the sort order of the list.
- **Bluetooth visibility**: share the selected file or the files you want with other Bluetooth devices.
- **Lock/Unlock**: lock the file to prevent it from being moved, deleted, and renamed or unlock the file.
- **Details**: access the file properties.

Downloading video clips

1. Select the **My video clips** folder.
2. Select **More videos**. You are connected to the website preset by your service provider.
3. Search for the file you want and follow the onscreen instructions to download it.

Sounds

Use this menu to access voice memos you have recorded, and sound clips you have downloaded, received in messages, or imported from your computer.

Playing a sound clip

1. Scroll to a sound folder.
2. Select a sound clip. The media player opens. ▶ p. 43
For a voice memo, see **Voice recorder**.
▶ p. 91

Using sound options

From the sound list, press <**Options**> to access the following options:

- **Play**: play the selected file.
- **Send via**: send the file via MMS, e-mail, or Bluetooth.
- **Set as**: set the sound as your ringtone for a voice call or video call, or as a ringtone for a Contacts entry.
- **Move**: move the selected file or the files you want to another folder.
- **Copy**: copy the selected file or the files you want to another folder.
- **Activate key**: get a new licence key when the key for the selected DRM file expires.

- **Reactivate key**: get another licence key even when the key for the selected DRM file has not expired.
- **Delete**: delete the selected file or the files you want.
- **Rename**: change the file name.
- **Add to playlist** (for music files): add the selected file to the play list.
- **Record audio** (for ring tone or voice memos): record a new voice memo.
- **Create folder**: add a new folder.
- **List by**: change the sort order of the list.
- **Bluetooth visibility**: share the selected file or the files you want with other Bluetooth devices.
- **Lock/Unlock**: lock the file to prevent it from being moved, deleted, and renamed or unlock the file.
- **Details**: access the file properties.

Downloading sound clips

1. Select the **Music** or **Ringtones** folder.
2. Select **More sounds**. You are connected to the preset website by your service provider.

3. Search for the file you want and follow the onscreen instructions to download it.

Games and more

Use this menu to access the embedded Java games and download Java applications.

Accessing a game

Select a game from the game list and follow the onscreen instructions. The procedure may differ from game to game.

Using Java game options

From the application list, press <**Options**> to access the following options:

- **Start:** launch the selected game.
- **Activate key:** get a new licence key when the key for the selected DRM file expires.
- **Reactivate key:** get another licence key even when the key for the selected DRM file has not expired.
- **Delete:** delete the selected game or the games you want.
- **Rename:** change the game name.

- **Lock/Unlock:** lock the file to prevent it from being moved, deleted, and renamed or unlock the file.
- **Advanced:** access the following options:
 - **Certificates:** access the root certificates for the operator and trusted third parties.
 - **Connections:** select a connection profile to be used for accessing an application server. You can also create or edit a profile. ▶ p. 110
- **Details:** access the game properties.

Downloading new games

1. Select **More games**. You are connected to the website preset by your service provider.
2. Search for the application you want and follow the onscreen instructions to download it.

Other files

Use this menu to access any other files than image, video, music and sound files. Your phone provides you with Pícel File Viewer to allow you to view, without corruption, various document files. Available file formats are *.swf, *.svg, *.doc, *.xls, *.ppt, *.pdf, and *.txt.

Viewing a document

Select a file. Pícel File Viewer runs and opens the document.




- Depending on the file size or memory capacity of Pícel File Viewer, some files may not open properly.
- If a document file contains languages unsupported by Pícel File Viewer, the content of the document will not display correctly.

Use the following keys to view the document:

| Key | Function |
|------------|------------------------|
| Up/Down/ | Scrolls through pages. |
| Left/Right | Pans the page |

| Key | Function |
|-----|--|
| ▲/▼ | Zooms in or out. |
| OK | Fits the file to the page size. |
| 1 | Searches backward through the file for the text entered in the Search option. |
| 2 | Returns to the first page. |
| 3 | Searches forward through the file for the text entered in the Search option. |
| 4 | Returns to the previous page. |
| 5 | Rotates the file 90 degrees clockwise or counterclockwise. |
| 6 | Moves to the next page. |
| 8 | Moves to the last page. |
| # | Changes the display to Full screen view or Normal screen view. |

Using document options

While viewing a document, press <**Options**> or < > to access the following options:

- **Full screen view/Normal view:** change the view mode.
- **Zoom:** zoom in or out.
- **Pause/Resume:** pause or resume playback.
- **Quality:** select the image quality.
- **Fit to screen:** fit the file to the page size, screen width, or screen height.
- **Go to:** move to another page of the document.
- **Rotate:** Rotates the file 90 degrees clockwise or counterclockwise.
- **Screen panning/Normal panning:** change the page scroll mode. You can scroll by screen size or scrolling by preset pixel.
- **Hide controller/Show controller:** hide or display the shortcut tool bar in Full screen view.
- **Search:** search for text in the document.

- **Send via:** send the file via e-mail or Bluetooth.
- **Delete:** delete the selected file.
- **Bluetooth visibility:** share the selected file or the files you want with other Bluetooth devices.
- **Lock/Unlock:** lock the file to prevent it from being moved, deleted, and renamed or unlock the file.
- **Details:** access the file properties.
- **FileViewer shortcuts:** view the functions of the keys you can use in Pícsel File Viewer.

Viewing a calendar item, name card, or bookmark item

After saving items in this folder, you can use them.

On the Other files screen, select one of the calendar items, name cards, and bookmark items.

Using file options

You can access the following options by pressing <**Options**> on the Other files screen:

- **View:** open the selected file.
- **Register to Contacts:** register the selected name card to a Contacts entry.
- **Register to Calendar:** register the selected calendar item to the Calendar.
- **Register to Bookmark:** register the selected bookmark item to the bookmark list.
- **Send via:** send the file via MMS, e-mail, or Bluetooth.
- **Move:** move the selected file or the files you want to another folder.
- **Copy:** copy the selected file or the files you want to another folder.
- **Delete:** delete the selected file or the files you want.
- **Rename:** change the file name.
- **Create folder:** add a new folder.
- **List by:** change the sort order of the file list.
- **Bluetooth visibility:** share the selected file or the files you want with other Bluetooth devices.
- **Lock/Unlock:** lock the file to protect it from being moved, deleted, and renamed or unlock the file.
- **Details:** access the file properties.

Media album

Use this menu to access the Media Album service, with which you can organise your own online media album, adding media content and messages via the wireless web. This menu is only available if supported by your service provider.

Memory status

This menu displays the amount of memory currently in use in each media folder. You can also delete a media file by selecting it from this menu and pressing <Delete>.

Calendar (Menu 7)

The Calendar feature enables you to keep track of your schedule.

To access this menu, press [OK] in Idle mode and select **Calendar**.

Selecting a day on the calendar

When you enter the **Calendar** menu, the calendar appears with today's date indicated by an orange box.

- Press [Left] or [Right] to move by day.
- Press [Up] or [Down] to move by week.
- Press [▲/▼] to move by month.

Creating a new item

You can store scheduled items, anniversaries, holiday items, private items, and important items.

Entering a scheduled item

1. Select a date on the calendar.
2. Press <**Options**> and select **Create** → **Appointment**, **Important**, or **Private**.

3. Enter information or change the settings:

- **Title**: enter the title of the item.
- **Details**: enter item details.
- **Start date** and **Start time**: enter the starting date and time for the item.
- **End date** and **End time**: enter the ending date and time for the item.
- **Location**: enter information about the item location.
- **Alarm**: select to set an alarm for the item.
- **Before**: set how long before the item the alarm is to alert.
- **Alarm tone**: select an alarm tone.
- **Repeat**: select to set the item to recur and select a time format for an item to recur.
- **every**: set a repeat interval.
- **By date**: select a specific date of the month for an item to recur.
- **By day**: select a specific day of the month for an item to recur.
- **Except weekends**: select to set the alarm to sound except for weekends.

- **Expiry:** change the expiry setting.
4. Press <**Options**> and select **Save** to save the item.

Entering an anniversary

1. Select a date on the calendar.
2. Press <**Options**> and select **Create** → **Anniversary**.
3. Enter information or change the settings:
 - **Occasion:** enter information about the anniversary.
 - **Date:** enter the date.
 - **Alarm:** select to set an alarm for the anniversary.
 - **Before:** set how long before the item the alarm is to alert.
 - **Alarm time:** enter the alarm time.
 - **Alarm tone:** select an alarm tone.
 - **Repeat every year:** select to set the phone to remind you of the anniversary every year.

4. Press <**Options**> and select **Save** to save the anniversary.

You can retrieve person's birthday information from Contacts by pressing <**Options**> and selecting **Birthday from Contacts**.

Entering a holiday

1. Select a date on the calendar.
2. Press <**Options**> and select **Create** → **Holiday**.
3. Enter information or change the settings:
 - **Occasion:** enter information about the holiday.
 - **Date:** enter the date.
 - **Repeat every year:** select to set the phone to remind you of the holiday every year.
4. Press <**Options**> and select **Save** to save the holiday.

Consulting the calendar

Once you have scheduled items, the square brackets appear on the corner of the date box.

Viewing an item

1. Select a date on the calendar to display the items for that day. The list of items displays.
2. Select an item to view its details.

From the item list, press **<Options>** to access the following options:

- **View:** access the selected item.
- **Create:** add a new item.
- **Send:** send the item via MMS, e-mail, or Bluetooth.
- **View mode:** change the calendar view mode. ▶ p. 81
- **Event list:** display all items of the selected item type.
- **Delete:** delete the selected item or all of the items for the selected day.
- **Save to My files:** save the selected item as a data file in the **Other files** folder.
- **Print via Bluetooth:** print the item details via a Bluetooth-compatible printer. Some printers may not be compatible with the phone.

- **Settings:** change the default calendar settings:

Starting day: select which day of the week the calendar starts with.

Default view mode: select the default calendar view mode.

- **Missed alarm event:** access the missed event alarms.
- **Memory status:** access memory information for the items stored on the calendar. You can also delete an item by selecting it from this menu and pressing **<Delete>**.

Using calendar options

On the calendar, press **<Options>** to access the following options:

- **View:** display the items stored for the selected date.
- **View mode:** change the calendar view mode. ▶ p. 81
- **Create:** add a new item.
- **Go to:** go to today's date or enter a specific date.

- **Event list:** display all items of the selected item type.
- **Delete:** delete the selected item or the items for the specific period.
- **Settings:** change the default calendar settings:
Starting day: select which day of the week the calendar starts with.
Default view mode: select the default calendar view mode.
- **Missed alarm event:** access the missed event alarms.
- **Memory status:** access memory information for the items stored on the calendar. You can also delete an item by selecting it from this menu and pressing **<Delete>**.

Viewing a different mode






By default, the calendar appears in Monthly view mode. You can change the calendar display to Weekly view mode or Daily view mode.



Press **<Options>** and select **View mode** → a view mode.

Daily view

You can view items for the selected date.

The following icons may display to indicate the type:

-  Anniversaries
-  Appointments
-  Important items
-  Private items
-  Holidays

If you have set the Repeat and Alarm options, the  and  icon display.

Select an item to view its details.

Weekly view

You can view items for the selected week. A cell on the timetable indicates the presence of a schedule item. Press [**▲/▼**] to access another week.

Select a cell for the date you want.

Camera (Menu 8)

You can use the camera module embedded in your phone to take photos and record videos.

To access this menu, press [OK] in Idle mode and select **Camera**, or press and hold [Ⓜ/Ⓜ].



- Do not take photos or record videos of people without their permission.
- Do not take photos or record videos in a place where cameras are not allowed.
- Do not take photos or record videos in a place where you may interfere with another person's privacy.

Taking a photo

You can take photos in various modes. The camera produces JPEG photos.



- When you take a photo in direct sunlight or in bright conditions, shadows may appear on the photo.

Taking a photo

1. Access the **Camera** menu to turn on the camera. You can also press and hold [Ⓜ/Ⓜ] in Idle mode.
2. Make any desired adjustments.
 - Press <Ⓜ> to use camera options.
▶ next section
 - Use the keypad to change the camera settings or switch to other modes.
▶ p. 84
3. Press [OK] or [Ⓜ/Ⓜ] to take a photo. The photo is saved in the **My photos** folder.

-
4. **To** **Press**


use photo options <Ⓜ> or <Options>. ▶ p. 85

delete the photo [C] and then <Yes>.

send the photo via [OK]. ▶ p. 52
MMS


return to Capture <Ⓜ> or <Back>.
mode

Using camera options in Capture mode

In Capture mode, press <  > to access the following options:

- **Switch camera:** switch between the front camera lens and rear camera lens.
- **Size:** select an image size.
- **Shooting mode:** take a photo in the following modes:
 - Single shot:** take a photo in Normal mode. You can select whether the camera automatically saves a photo.
 - Multi-shot:** take a series of action stills. You can select the number of photos the camera will take.
 - Mosaic style:** take several stills and save them in one frame. Press the shutter release key to take each photo.
- **Effects:** change the colour tone or apply a special effect.
- **Frames:** apply a decorative frame.
- **Timer:** set a time delay before the camera takes a photo.

- **White balance:** adjust the colour balance of the image. You can make your photo appear warmer or cooler.
- **Viewfinder:** select a preview screen.
- **Shortcuts:** view the functions of the keys you can use in Capture mode.

In Capture mode, press <  > to access the following options:

- **Camera:** switch to Capture mode.
- **Camcorder:** switch to Record mode.
- **Folders:** access the **My photos** folder.
- **Settings:** change the default settings for taking a photo. Select **Camera** and press [Left] or [Right] to scroll through the following setting options:
 - Quality:** select an image quality.
 - Scene program:** set whether to use Night shot mode.
 - Focus mode:** select a focus mode.
 - Spot metering:** adjust the exposure based on a specific area of the image. Select **On** to display the spot focus frame in the middle of the image, and change the exposure according to the brightness of the image fragment in the frame.

Shutter sound: select the sound that you hear when you press the shutter release key.

Multi-shot speed: select the shooting speed in Multi Shot mode.

Default storage: select the memory location to store photos, if a memory card is inserted.

Default name: change the default prefix for file names.

- **Exit:** turn off the camera.


Using the keypad in Capture mode

You can use the keypad to customise your camera settings in Capture mode.

| Key | Function |
|----------------|---|
| Left/ Right | Adjusts the brightness. |
| Up/ Down | Zooms in or out. (Not available for the maximum size) |
| ▲ | Flips the image vertically. |
| ▼ | Shows the mirror image. |

| Key | Function |
|-----|---|
| 1 | Switches to Record mode. ▶ p. 85 |
| 2 | Changes the image size. |
| 3 | Changes the image quality. |
| 4 | Changes the shooting mode. |
| 5 | Changes the colour tone or applies a special effects. |
| 6 | Changes the white balance setting. |
| 7 | Adds a decorative frame. |
| 8 | Sets the timer. |
| 0 | Goes to the My photos folder. ▶ p. 69 |
| # | Changes a preview screen. |

Using photo options

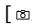

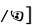
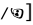
After saving a photo, press  or **<Options>** to access the following options:

- **View:** access one of the multi-shot photos.
- **Send via:** send the file via MMS, e-mail, or Bluetooth.
- **Delete:** delete the selected file, the files you want, or all files.
- **Viewfinder:** return to Capture mode.
- **Set as:** set the photo as your wallpaper for the display, or as a caller ID image for a Contacts entry.
- **Edit:** edit the photo by using various tools. ▶ p. 70
- **Rename:** change the file name.
- **Go to My photos:** access the **My photos** folder.
- **Lock/Unlock:** lock the file to prevent it from being moved, deleted, and renamed, or unlock the file.
- **Bluetooth visibility:** share the file with other Bluetooth devices.
- **Details:** access the file properties.

Recording a video

You can record a video of what is displayed on the camera screen and save it.


Recording a video

1. Access the **Camera** menu to turn on the camera. You can also press and hold  in Idle mode.
2. Press [**1**] to switch to Record mode.
3. Make any desired adjustments.
 - Press  to use camera options.
 - ▶ next section
 - Use the keypad to change the camera settings or switch to other modes. ▶ p. 87
4. Press [**OK**] or  to start recording.
5. Press [**OK**] or  to stop recording. The video is saved in the **My video clips** folder.

| 6. To | Press |
|-----------------------|--|
| use video options | <Options> . ▶ p. 87 |
| delete the video clip | [C] and then <Yes> . |


| To | Press |
|--------------------------|---------|
| play back the video clip | [OK]. |
| return to Record mode | <Back>. |

Using camera options in Record mode

In Record mode, press < > to access the following options:

- **Switch camera:** switch between the front camera lens and rear camera lens.
- **Size:** select a frame size.
- **Recording mode:** select a video recording mode. If you select **Limit for MMS**, you can record a video suitable for an MMS message.
- **Effects:** change the colour tone or apply a special effect.
- **Timer:** set a time delay before the camera starts recording.
- **White balance:** adjust the colour balance of the image. You can make your photo appear warmer or cooler.

- **Shortcuts:** view the functions of the keys you can use in Record mode.

In Record mode, press < > to access the following options:

- **Camera:** switch to Capture mode.
- **Camcorder:** switch to Record mode.
- **Folders:** access the **My video clips** folder.
- **Settings:** change the following settings for recording a video. Select **Camcorder** and press [Left] or [Right] to scroll through the following setting options:
 - Quality:** select a video quality.
 - Audio recording:** record audio with a video clip.
 - Default storage:** select the memory location to store videos, if a memory card is inserted.
 - Default name:** change the default prefix for file names.
- **Exit:** turn off the camera.

Using the keypad in Record mode

You can use the keypad to customise your camera settings in Record mode.

| Key | Function |
|----------------|--|
| Left/ Right | Adjusts the brightness. |
| Up/ Down | Zooms in or out. |
| ▲ | Flips the image vertically. |
| ▼ | Shows the mirror image. |
| 1 | Switches to Capture mode. ▶ p. 82 |
| 2 | Changes the frame size. |
| 3 | Changes the video quality. |
| 4 | Changes the video recording mode. |
| 5 | Changes the colour tone or applies a special effect. |
| 6 | Changes the white balance setting. |

| Key | Function |
|-----|---|
| 7 | Mutes or unmutes audio. |
| 8 | Sets the timer. |
| 0 | Goes to the My video clips folder. ▶ p. 71 |

Using video options

After saving a video clip, press <Options> to access the following options:

- **Play:** play back the video clip.
- **Send via:** send the file via MMS, e-mail, or Bluetooth.
- **Delete:** delete the file.
- **Viewfinder:** return to Record mode.
- **Rename:** change the file name.
- **Go to My video clips:** access the **My video clips** folder.
- **Lock/Unlock:** lock the file to prevent it from being moved, deleted, and renamed, or unlock the file.
- **Bluetooth visibility:** share the file with other Bluetooth devices.

- **Show controller/Hide controller:** set the video player to display or hide the controller.
- **Details:** access the file properties.
- **Settings:** change the default settings for playing video files:
 - Visualizatoin type:** select a playback animation.
 - Volume:** select a volume level.
 - Show controller:** set the video player to display or hide the controller.

Google (Menu 9)

Use the **Google** menu to use the Google search engine and e-mail service.

To access this menu, press **[OK]** in Idle mode and select **Google**.

Search (Menu 9.1)

Use this menu to launch the Google search engine that allows you to find information, news, images, videos, or local services from around the web.

Map (Menu 9.2)

Use this menu to check locations on the map and get information on the location. This menu may not be shown depending on your service provider.

Mail (Menu 9.3)

Use this menu to use the Google e-mail service.

Applications (Menu *)

You can use convenient features, such as a voice recorder, world clock, calculator, converter, timer, and stopwatch.

To access this menu, press **[OK]** in Idle mode and select **Applications**.

Memo (Menu *.1)

You can create a list of memos.

Creating a memo

1. Press **<Options>** and select **Create**.
2. Enter the memo contents and press **[OK]**.

Viewing a memo

Select a memo from the list.

Using memo options

From the memo list, press <**Options**> to access the following options:

- **View:** access the selected memo.
- **Create:** add a new memo.
- **Send:** send the memo as a data file via MMS, e-mail, or Bluetooth.
- **Delete:** delete the selected memo or all memos.
- **Save to My files:** save the selected memo as a data file in the **Other files** folder.
- **Print via Bluetooth:** print the memo details via a Bluetooth-compatible printer. Some printers may not be compatible with the phone.
- **Memory status:** access memory information for memos. You can also delete an item by selecting it from this menu and pressing <**Delete**>.


Tasks *(Menu *.2)*

You can create a list of tasks you need to complete.

Entering a task

1. Press <**Options**> and select **Create**.
2. Enter information or change the settings:
 - **Title:** enter the title for the task.
 - **Task:** enter task details.
 - **Start date:** enter the starting date.
 - **Due date:** enter the ending date.
 - **Alarm:** select to set an alarm for the task.
 - **before:** set how long before the task the alarm is to alert.
 - **Alarm time:** enter the alarm time.
 - **Alarm tone:** select an alarm tone.
 - **Priority:** select a priority level.
3. Press <**Options**> and select **Save** to save the task.

Viewing a task

A check mark appears in the status check box if the task has been completed. If you have set the Alarm option, the  icon displays.

Select a task from the list.

Using task options

From the task list, press <**Options**> to access the following options:

- **View:** access the selected task.
- **Create:** add a new task.
- **Send:** send the task as a data file via MMS, e-mail, or Bluetooth.
- **Done/Not done:** change the status of the task.
- **Sort by:** change the sort order of the list.
- **Delete:** delete the selected task, all tasks, or finished tasks.
- **Save to My files:** save the selected task as a data file in the **Other files** folder.

- **Print via Bluetooth:** print the task details via a Bluetooth-compatible printer. Some printers may not be compatible with the phone.
- **Missed alarm event:** access the missed event alarms.
- **Memory status:** access memory information for tasks. You can also delete an item by selecting it from this menu and pressing <**Delete**>.

Voice recorder *(Menu *.3)*

Use this menu to record voice memos. A voice memo can be up to one hour long.

Recording a voice memo

1. Press [**OK**] to start recording.
2. Speak into the microphone.
Press [**OK**] to pause or resume the recording.
3. Press [**Down**]. The voice memo is saved automatically.
4. Press [**OK**] to review the memo, or press [**Up**] to record additional memos.

Playing a voice memo

1. From the voice recorder screen, press <**Options**> and select **My voice clips**.
2. Select a voice memo.

During playback, use the following keys:

| Key | Function |
|-----------|---|
| OK | Pauses or resumes playback. |
| Left | Moves backward in a file. |
| Right | Moves forward in a file. |
| ▲/▼ | Adjusts the volume. |
| Down | Stops playback. |
| Up | Switches to Record mode (📺) or Review mode (📺). |

Using voice recorder options

After playback, press <**Options**> to access the following options:

- **Play:** play the selected voice memo in Review mode.
- **Record:** record a new voice memo.
- **My voice clips:** access the **My voice clips** folder.
- **Send via:** send the file via MMS, e-mail, or Bluetooth.
- **Activate key:** get a new licence key when the key for the selected DRM file expires.
- **Reactivate key:** get another licence key even when the key for the selected DRM file has not expired.
- **Set as:** set the sound as your ringtone for a voice call or video call, or as a ringtone for a Contacts entry.
- **Delete:** delete the file.
- **Rename:** change the file name.
- **Bluetooth visibility:** share the selected file with other Bluetooth devices.
- **Lock/Unlock:** lock the file to prevent it from being moved, deleted and renamed, or unlock the file.
- **Details:** access the file properties.
- **Record settings:** customise the default settings for the voice recorder:
 - Default name:** change the default prefix of file names.
 - Recording time:** select a maximum recording time.

World clock (Menu *.4)

Use this menu to set the home and local time zone.

Selecting the home time zone

1. Press <**Options**> and select **Edit** on the upper line (🏠).
2. Select **Home zone**.
3. Press [Left] or [Right] to scroll to the city you want.

You can view the time difference between your home time zone and Greenwich Mean Time (GMT). If you want to apply Daylight Saving Time (DST) to your time zone, select **Daylight saving**.

4. Press <**OK**> to save the home time zone.
5. Press <**Yes**> to update the time and date information.
6. Press <**Save**>.

Selecting the local time zone

1. Press <**Options**> and select **Edit** on the lower line (📍).
2. Press [Left] or [Right] to scroll to the city you want.

You can view the time difference between your local time zone and Greenwich Mean Time (GMT). If you want to apply Daylight Saving Time (DST) to your time zone, select **Daylight saving**.

3. Press <**OK**> to save the local time zone.

You can set the dual clock, one for your home time zone and the other for a time zone of your choice, to be displayed in Idle mode. Press <**Options**> and select **Display settings** → a type of dual clock.

Calculator (Menu *.5)

Use this menu to perform basic arithmetic functions such as addition, subtraction, multiplication, and division.

Performing a calculation

1. Enter the first number.
 - Press [*****] or [**#**] to include a decimal point or brackets.
 - Press [**▲**] or [**▼**] to move the cursor.
2. Enter the operation for your calculation by pressing the Navigation keys.
3. Enter the second number.
4. Press [**OK**] to view the result.

5. If necessary, repeat from step 2 to continue the calculation.

You can access the Converter feature by pressing **<Converter>**.

Converter (Menu *.6)

Use this menu for common conversions, such as currency and temperature.

Performing a calculation

1. Select the converter type you want.
2. Press [Left] or [Right] to select the original unit and press [Down].
3. Enter the value to be converted and press [Down].
 - Press [\times] to insert a decimal point.
 - Press [#] to change the temperature to above zero (+) or below zero (-).
4. Press [Left] or [Right] to select the unit you want to convert to.

The equivalent value for the amount you entered displays.

Using converter options

Press **<Options>** to access the following options:

- **View Rate:** display the currency rate list. You can edit the rate or add more currency rates.
- **Clear:** clear the current values.
- **Reverse:** reverse the conversion.

Timer (Menu *.7)

Use this menu to set a period of time for the phone to count down. The phone sounds an alarm when the specified period of time has expired.

Starting the timer

1. Press **<Set>**.
2. Enter the length of time you want to count down and press **<OK>**.
3. Press **[OK]** to start counting down.

Stopping the timer

- Press any key to stop the timer when it rings.
- Press **[OK]** on the Timer screen to stop the timer before it rings.

Stopwatch (Menu *.8)

Use this menu to measure elapsed time. The maximum time is 24 hours.

1. Press [**OK**] to start the stopwatch.
2. Press [**OK**] to select an interval. You can repeat this step for a total of 50 intervals.
3. To reset the stopwatch, press <**Reset**>.

SAT (Menu *.9)

This menu is available if you use a USIM/SIM card that supports SIM Application Toolkit menus and provides additional services, such as news, weather, sports, entertainment, and location services. Available services may vary, depending on your service provider's plans.

For details, see your USIM/SIM card instructions or contact your service provider.

Alarms (Menu 0)

Use this menu to set alarms to sound at specific times. The phone sounds a wake-up alarm even when the Silent profile is activated.

To access this menu, press [**OK**] in Idle mode and select **Alarms**.

Setting an alarm

1. Select the type of alarm.
2. Specify the following alarm settings:
 - **Name:** (for a normal alarm) enter a name for the alarm.
 - **Alarm activation:** activate the alarm.
 - **Alarm time:** enter the alarm time.
 - **Alarm type:** select an alert type for the alarm.
 - **Alarm tone:** select an alarm tone.
 - **Alarm volume:** select the volume for the alarm melody.
 - **Recurrence:** select the days for the alarm.
 - **Snooze:** set the snooze interval you want.

- **Repeat:** set a repeat option.
3. Press [OK] to save the alarm.

Stopping an alarm

When the time for an alarm comes and the alarm sounds:

- For a non-wake-up alarm, press any key.
- For a wake-up alarm, press <OK> or [OK].
- Press <Snooze> to cause it to sound again after the specified minutes.

Deactivating an alarm

1. Select the alarm you want to deactivate.
2. Select **Off** on the **Alarm activation** line.
3. Press [OK].

Setting alarms to sound when the phone is off

From the Alarms screen, select **Auto power** → **On**.

If the phone is off when it is time for the alarm to sound, the phone switches on and sounds the alarm.

Settings (Menu #)

The **Settings** menu provides you with various setting options to customise the phone to your preferences and needs. You can also reset the settings to their default status.

To access this menu, press [OK] in Idle mode and select **Settings**.

Phone profiles (Menu #.1)

Your phone provides you with sound profiles that allow you to quickly and easily change the sound settings of the phone for different events or situations. Use this menu to adjust the properties of each profile and activate the profile you need.

Editing a profile

1. Scroll to the profile you want.
2. Press <Options> and select **Edit**.
3. Change the sound settings. Press [Left] or [Right] to access the options in other tabs:
 - **Call alert type:** select an alert type for the call ringer.

- **Voice call ringtone:** select a ringtone for the call ringer of voice calls.
 - **Video call ringtone:** select a ringtone for the call ringer of video calls.
 - **Ringtone volume:** adjust the volume for the call ringer.
 - **Auto reply:** set the phone to send a reply message automatically.
 - **Message alert type:** select an alert type for the message ringer.
 - **Message alert tone:** select a ringtone for the message ringer.
 - **Message alert repetition:** select if the phone repeats reminding you of a new message.
 - **Alert tone volume:** adjust the volume for the message ringer.
 - **Keypad tones:** select a tone which sounds when you press a key.
 - **Power on type:** select an alert type for the power-on ringer.
 - **Power off type:** select an alert type for the power-off ringer.
 - **Slide tone:** cause the phone to sound when you open or close the phone.
 - **Volume, phone sounds:** adjust the phone volume for keytones and sound effect tones.
4. When you have finished, press **<Options>** and select **Save**.

Changing an active profile

From the profile list, select the profile you want.

Time & date *(Menu #.2)*

Use this menu to change the time and date displayed on your phone.

- **Time zone updating:** select one of the following options:

Prompt first: your phone will read the MCC (Mobile Country Code) from the network and automatically update the

- Sound effects by your Flash Dial Font setting will override this key tone setting.

current time for the country that you are in when you travel abroad.

- Time information may not be updated when you move to one time zone to another within a country.

Automatic: your phone will receive time information from the network.

Manual only: you can set the time and date manually.

- **Home zone:** select your home time zone. ► p. 92
- **Time:** enter the current time. To select AM or PM for 12-hour time format, press [Right].
- **Date:** enter the current date.
- **Time format:** select a time format.
- **Date format:** select a date format.

Display & light settings *(Menu #.3)*

Use this menu to change settings for the display and the light.

Display settings *(Menu #.3.1)*

Use this menu to change settings for the display.

- **Wallpaper:** you can change the background image that is displayed on the display.
- **Pictures:** the phone displays the image you have set as wallpaper for the idle screen.
- **Living world:** the phone displays the animated image that is changed depending on your network.
- **My screen:** the phone displays a photo slide of your favourite image for the idle screen.
- **Greeting message:** use this menu to enter the greeting that is displayed briefly when the phone is switched on.
- **Main menu style:** use this menu to select a display style for the main menu screen.

- **Pop up list menu:** use this menu to display the pop-up list that shows the menu options.
- **Dialling display:** use this menu to customise the settings for the numbers entered and the background colour of the display while dialling.
- **Dual clock:** use this menu to set the dual clock, one for your home time zone and the other for a time zone of your choice, to be displayed in Idle mode.

Light settings (Menu #.3.2)

Use this menu to change settings for the light.

- **LCD brightness:** use this menu to adjust the brightness of the display.
- **Backlight time:** you can select the length of time the backlight or display stays on when the phone is not used.
On: select the length of time the backlight stays on.
Dim: select the length of time the display stays on in Dim mode after the backlight turns off. After a specified time, the display turns off.

- **Keypad light:** you can set how the phone controls the use of the keypad light.

Use at any time: the keypad light is always used.

Use at custom time: the keypad light is used at a specified time period.

Phone settings (Menu #.4)

Many different features of your phone's system can be customised to suit your preferences.

Language (Menu #.4.1)

Use this menu to select a language for the display text or T9 input mode. If you select **Automatic**, the phone uses the same language as the USIM/SIM card.

Shortcuts (Menu #.4.2)

You can use the Navigation keys as shortcut keys to access specific menus directly from Idle mode. Use this menu to assign these shortcut assignments to a key.

Assigning a shortcut menu

1. Select a key to be used as a shortcut key.

2. Select the menu that will be assigned to the key.

Using shortcut options

On the Shortcuts screen, press <Options> to access the following options:

- **Assign:** assign a shortcut menu.
- **Change:** change a shortcut menu assignment.
- **Remove:** deactivate the shortcut assignment to the selected key.
- **Remove all:** deactivate all shortcut assignments.

Own number (Menu #.4.3)

Use this menu to check your phone numbers, or to assign a name to each of the numbers. Changes made here do not affect the actual subscriber numbers on your USIM/SIM card.

Volume key function (Menu #.4.4)

Use this menu to set whether the phone mutes the call ringer or rejects a call if you press and hold [▲/▼] when a call comes in.

Camera key (Menu #.4.5)

Use this menu to set a default function for [Ⓜ/Ⓞ]. If you select **Always ask**, the phone will ask you to select the function each time you press and hold [Ⓜ/Ⓞ] in Idle mode.

Slide settings (Menu #.4.6)

Use this menu to set how the phone reacts when you open it for an incoming call, and when you close it while using a function.

- **Slide up:** set whether or not to answer a call by opening the phone.
- **Slide down:** set whether or not the phone maintains the menu you are using when you close the phone.

- When you set **Slide down** to **Continue operation**, the keypad lock works just in Idle mode or after the display turns off.

Call settings (Menu #.5)

Use this menu to set options for call functions.

All calls (Menu #.5.1)

Use this menu to change the setting for call functions and sounds.

- **Show my number:** prevent your phone number from being displayed on the phone of the person being called. If you select **By network**, the phone will use the default setting provided by the network.



Some networks do not allow the user to change this setting.

- **Closed user group:** set incoming and outgoing calls to be restricted to a selected user group. For details about how to create a closed user group, please contact your service provider:
Use user group: activate Closed User Group (CUG) index numbers.
Outside access: enable calls to numbers other than those in the Closed user group. This feature depends on the nature of your CUG subscription.
Default group: enable the default CUG, if you have set one with your service provider. When making a call, you are given the option of using your default CUG, instead of selecting one from the list.

Group index: add, delete, or activate CUG index numbers.

- **Auto reject:** activate the Auto reject feature. You can also set the phone to reject a call from the unknown or specified numbers.
- **Answering mode:** set how to answer incoming calls.
- **Show caller ID:** set the phone to display missed call notifications with the most recently missed caller's information.
- **Call status tones:** select the various tones on the phone you want to turn on or off:
Call connect tone: cause the phone to beep when a call is connected to the system.
Minute minder: cause the phone to beep every minute during an outgoing call to keep you informed of the length of your call.
Call end tone: cause the phone to beep when a call is disconnected by the other person or the faded signal.

- **Alerts on call:** set the phone to beep when you receive a new message or when the time for an alarm comes during a call.

Voice call (Menu #.5.2)

Use this menu to access network services for voice calls.

Setting a call diverting option

This network service reroutes incoming calls to a different phone number that you specify.

1. From the Voice call screen, select **Call diverting**.
2. Select a call diverting option:
 - **Always:** divert all calls.
 - **If busy:** divert calls when you are on another call.
 - **If no reply:** divert calls when you do not answer the phone.
 - **If out of reach:** divert calls when you are not in an area covered by your service provider or when your phone is switched off.
 - **Cancel all:** cancel all call diverting options.

3. Enter the number to which the calls will be diverted in the **Divert to** line.
4. If you select **If no reply**, move to the **Waiting time** line and select the length of time the network delays before diverting a call.
5. Press **<Options>** and select **Activate**. To deactivate the call diverting, select **Deactivate**.

Setting a call barring option

This network service allows you to restrict your calls.

1. From the Voice call screen, select **Call barring**.
2. Select a call barring option:
 - **All outgoing calls:** prohibit outgoing calls.
 - **Outgoing international calls:** prohibit international calls.
 - **International calls except home:** only allow calls to numbers within the current country when you are abroad, and to your home country.
 - **All incoming calls:** prohibit incoming calls.

- **Incoming when roaming:** prohibit incoming calls when you use your phone outside of your home country.
 - **Cancel all:** cancel all call barring settings, allowing calls to be sent and received normally.
3. Enter the call barring password supplied by your service provider.
 4. Press <**Options**> and select **Activate**. To deactivate the call barring, select **Deactivate**.

- You can change the call barring password obtained from your service provider. On the Call barring screen, press <**Options**> and select **Change password**.

Setting a call waiting option

This network service informs you when someone is trying to reach you while you are on another call.

1. From the Voice call screen, select **Call waiting**.
2. Press <**Options**> and select **Activate**. To deactivate the call waiting, select **Deactivate**.

Setting an auto redial option

This service allows you to set the phone to make up to ten attempts to redial a phone number after an unsuccessful call.

1. From the Voice call screen, select **Auto redial**.
2. Select **On**.

Video call (Menu #.5.3)

Use this menu to change the default settings for using the video call feature.

- **Select my image:** select an image to be displayed on the other's phone if you will not show your image via the camera.
- **Select my video:** select a video clip to be displayed on the other's phone if you will not show your image via the camera.
- **Use call fail options:** set the phone to retry when a voice call does not connect.
- **Call diverting:** reroute incoming video calls to a different phone number that you specify. ▶ p. 101
- **Call barring:** restrict video calls. ▶ p. 101

- **Auto redial:** set the phone to make up to ten attempts to redial a phone number after an unsuccessful call.

Data call (Menu #.5.4)

Use this menu to change the default settings for using the data call feature.

- **Call diverting:** reroute incoming data calls to a different phone number that you specify. ▶ p. 101
- **Call barring:** restrict data calls. ▶ p. 101
- **Call waiting:** set the network to inform you when someone is trying to reach you while on another call. ▶ p. 102

Security (Menu #.6)

Use this menu to protect the phone against unauthorised use by managing the several access codes of your phone and USIM/SIM card.

- If you enter an incorrect PIN/PIN2 three times, the USIM/SIM card is blocked. To unblock it, you need to enter your PUK/PUK2 (Personal Unblocking Key). The codes are supplied by your network operator.

Phone lock (Menu #.6.1)

Use this menu to protect the phone from unauthorised use. When this feature is enabled, you must enter a 4- to 8-digit phone password each time the phone is switched on.

To change the password, use the **Change phone password** menu.

SIM lock (Menu #.6.2)

This menu allows your phone to work only with the current USIM/SIM by assigning a SIM password. You must enter the SIM password to use a different USIM/SIM card.

PIN lock (Menu #.6.3)

The 4- to 8-digit PIN (Personal Identification Number) protects your USIM/SIM card against unauthorised use. When this feature is enabled, the phone requires your PIN each time it is switched on.

Privacy lock (Menu #.6.4)

Use this menu to lock access to messages, media files, call logs, Contacts entries, calendar data, memos, or tasks.

When a privacy option is enabled, you must enter the phone password to access the locked items.

Fixed dialling mode (Menu #.6.5)

If supported by your USIM/SIM card, Fixed Dialling Number (FDN) mode restricts your outgoing calls to a limited set of phone numbers. When this feature is enabled, you can make calls only to phone numbers stored on the USIM/SIM card.

Change phone password (Menu #.6.6)

Use this menu to change your phone password.

Change PIN code (Menu #.6.7)

Use this menu to change your PIN. The PIN lock feature must be enabled to change the PIN.

Change PIN2 code (Menu #.6.8)

If supported by your USIM/SIM card, use this menu to change your current PIN2.

Mobile tracker (Menu #.6.9)

When someone tries to use your phone with another USIM/SIM card, the phone will automatically send the preset tracking message to your family or friends. You can check the phone number from which the messages are sent and then track your phone. This feature is useful when the phone is stolen or lost.

Sending of the tracking message will be billed to the user of the unauthorised USIM/SIM card. To use your phone with any other USIM/SIM card, you must first deactivate the Mobile tracker feature.

1. Enter the phone password and press **<Confirm>**.
2. Specify the following options:
 - **Activation:** activate or deactivate the Mobile tracker feature.
 - **Recipients:** specify phone numbers to which you want to send the tracking messages.
 - **Sender:** enter the sender's name.
 - **Messages:** check the preset tracking message text.

3. When you have finished, press <**Save**>.
4. Press <**Accept**> if you agree to the terms and conditions of service listed on the screen.

Application settings (Menu #. 7)

You can customise the settings for using applications available on the phone.

Contact settings (Menu #. 7.1)

Use this menu to set up the default contact settings.

Speed dial (Menu #. 7.1.1)

Use this menu to assign speed dial numbers (2 to 9) to eight of your most frequently called numbers.

Assigning speed dial entries

1. Scroll to a key location from **2** to **9**. Key **1** is reserved for your voicemail server.
2. Press <**Options**> and select **Assign** → **Contacts** or **FDN contacts**.
3. Select the contact you want from the contact list.
4. Select a number, if the contact has more than one number.

Managing speed dial entries

From the Speed dial screen, press <**Options**> to access the following options:

- **Assign:** assign a number to an unassigned key.
- **View:** check the name and number assigned to a key.
- **Change:** assign a different number to a key.
- **Remove:** clear the speed dial setting for a key.
- **Voice call:** make a voice call.
- **Video call:** make a video call.

Dialling speed dial numbers

In Idle mode, press and hold the appropriate key.

Save new contacts to (Menu #. 7.1.2)

Use this menu to select the default memory location for saving contacts. If you select **Always ask**, the phone will ask you to select a memory location each time you save a number.

View contacts from (Menu #.7.1.3)

Use this menu to set the memory location from which Contacts shows entries.

Own number (Menu #.7.1.4)

Use this menu to check your phone numbers, or to assign a name to each of the numbers. Changes made here do not affect the actual subscriber numbers on your USIM/SIM card.

Messaging settings (Menu #.7.2)

Use this menu to change the default settings for using the messaging services. ▶ p. 63

Calendar settings (Menu #.7.3)

Use this menu to change the default settings for the calendar.

- **Starting day:** select which day of the week the calendar starts with.
- **Default view mode:** select the default calendar view mode.

Camera settings (Menu #.7.4)

Use this menu to change the default settings for taking photos. ▶ p. 83

Camcorder settings (Menu #.7.5)

Use this menu to change the default settings for recording videos. ▶ p. 86

Media player settings (Menu #.7.6)

Use this menu to change the default settings for playing media files in the media player.

▶ p. 44

Browser settings (Menu #.7.7)

Use this menu to select a connection profile to be used for accessing the Internet. You can also create or edit a profile. ▶ p. 110

Network settings (Menu #.8)

Use this menu to change the settings for connecting to your cellular network.

Bluetooth (Menu #.8.1)

Using Bluetooth wireless, you can connect the phone wirelessly to other Bluetooth devices and exchange data with them, talk hands-free, or control the phone remotely.

Bluetooth technology allows free wireless connections between all Bluetooth-compliant devices within a range of 10 metres. Since the devices communicate using radio waves, they do not need to be in line of sight to each other.



- If there are obstacles between the devices, the operating distance may be reduced.
- It is recommended that you do not use the Bluetooth feature while using multimedia features, such as voice recorder, camera, and media player, or vice versa, for the better performance.
- Some devices, especially those that are not tested or approved by SIG, may be incompatible with your phone.

Setting up the Bluetooth feature

The **Bluetooth** menu provides the following options:






- **Activation:** activate or deactivate the Bluetooth feature.
- **My devices:** search for connectable Bluetooth devices.

- **My phone's visibility:** allow other Bluetooth devices to locate your phone, or not.
- **My phone's name:** assign a Bluetooth device name to your phone, which is then displayed on other devices.
- **Secure mode:** determine if the phone asks for your confirmation when other devices access your data.
- **Bluetooth service:** display available Bluetooth services.

Searching for and pairing with a Bluetooth device

1. From the **Bluetooth** menu, select **My devices**.
2. Select **Search new device**.

After searching, a list of devices to which you can connect displays. The following icons indicate the type of device:

-  Hands-free car kit or headset
-  Mobile phone
-  Computer
-  PDA
-  Unknown device

-  Printer

The colour of the icon indicates the status of the device:

- Grey for unpaired devices
 - Blue for paired devices
 - Red for devices that are currently connected to your phone
3. Select a device.
 4. Enter a Bluetooth PIN and press **<OK>**. This code is used just once and you do not need to memorise it.

When the owner of the other device enters the same code, pairing is complete.



Some devices, especially headsets or hands-free car kits, may have a fixed Bluetooth PIN, such as **0000**. If the other device has one, you must enter the code.

Using device options

From the device list, press **<Options>** to access the following options:

- **Connect:** connect to a headset or hands-free car kit.

- **Disconnect:** end the connection with the connected device.
- **Browse device:** search for data from the device and import data directly to your phone.
- **Service list:** access the Bluetooth service list of the device.
- **Authorise device/Unauthorise device:** determine whether the phone asks you to permit connection when other devices try to connect to your phone.
- **Delete:** remove the selected device or all devices from the list.
- **Rename:** rename the selected device.

Sending data via Bluetooth

1. Activate the Bluetooth feature.
2. Select the application in which the item you want to send is stored.
3. Scroll to the item you want and press **<Options>**.
4. Select **Send contact details/Send/Send via** → **Via bluetooth/Bluetooth**.

5. Select **Search new device**.

The phone searches for devices within range and displays a list of available devices.

6. Select a device.

7. If necessary, enter the Bluetooth PIN needed for pairing and press <OK>.

Receiving data via Bluetooth

To receive data via Bluetooth, your phone's Bluetooth feature must be active and its visibility must be enabled.

1. If an unauthorised Bluetooth device sends data to your phone, press <Yes> to allow the device to access your phone.
2. Press <Yes> to receive data.

Network selection (Menu #.8.2)

Use this menu to select to either manually select the network to be used when roaming outside of your home area, or to let the network be chosen automatically. You can select a network other than your home network only if there is a valid roaming agreement between the two.

Network mode (Menu #.8.3)

Use this menu to select the network you use:

- **Automatic:** the phone scans for available networks.
- **GSM 900/1800:** the phone operates in the combined GSM 900/1800 network.
- **GSM 1900:** the phone operates in the GSM 1900 network. This option is only available in the U.S.A.
- **UMTS:** the phone operates in UMTS (3G network) networks. You can get a higher speed quality than on lower generation networks, and use advanced data and information services, such as video calls.

Preferred networks (Menu #.8.4)

Use this menu to add a new network to your preferred network list, if your USIM/SIM card supports it.

Adding a network from the network list

1. From the network list, press <Options> and select **Insert** or **Add** → **Network list**.

2. Scroll to the network you want and press **<Insert>** or **<Add>**.

Creating a network

1. From the network list, press **<Options>**.
2. Select **Insert** or **Add** → **New network**.
3. Specify network parameters:
 - **Country code:** enter the country code.
 - **Network code:** enter the network code provided by the network operator.
 - **Network name:** enter the name for the network.
 - **Network type:** select a network type.
4. Press **<Insert>** or **<Add>** to add the network.

Connections *(Menu #.8.5)*

Use this menu to create and customise the profiles containing the settings for connecting your phone to the network. You need these settings to use the web browser or send MMS messages or e-mails.

Your phone is set up by default for connecting to the network. If you change the settings without first checking with your service provider, the web browser, MMS, and e-mail features may not work properly.

Creating a profile

1. Press **<Options>** and select **New**.
2. Specify profile parameters:
 - **Set name:** enter a profile name.
 - **Access name:** edit the access point name used for the address of the GPRS network gateway.
 - **Auth type:** choose the type of authentication used.
 - **User ID:** enter the user ID.
 - **Password:** enter the user password.
 - **Protocol:** select the protocol from among **WAP**, **HTTP**, and **Other**.
 - **Home URL:** (WAP and HTTP only) enter the URL address of the page to be used as your homepage.
 - **Gateway address:** (WAP only) enter the gateway address of the proxy server.

- **Proxy address/Port:** (HTTP only) set the proxy server address and port.
- **Secure connection:** (WAP only) turn the secure mode on or off.
- **Linger time (sec.):** set a time period after which the network is disconnected if there has been no new data traffic in that time.
- **Advanced settings:** provide you with the following options:
 - Static IP:** specify if you want to manually enter an IP address; see the **Local phone IP** option. If you want the IP address to be automatically assigned by the server, remove the check mark.
 - Local phone IP:** enter the IP address obtained from the network operator, if you selected the **Static IP** option.
 - Static DNS:** specify if you want to manually enter the Domain Name Server (DNS) address; see the **Server 1/Server 2** option.

If you want the address to be automatically assigned by the server, remove the check mark.

Server 1/Server 2: enter the Domain Name Server (DNS) addresses.

Traffic class: select the traffic class.

3. Press <**Save**> to save the profile.

Using profile options

From the profile list, press <**Options**> to access the following options:

- **View:** view the properties of the selected profile.
- **Edit:** edit the selected profile.
- **New:** add a new profile.
- **Rename:** change the profile name.
- **Delete:** delete the profile.
- **Restore:** restore the changed settings to the default status.



You cannot edit or delete the default connection profile.

Memory settings (Menu #.9)

Use this menu to manage your phone's memory and a memory card.

Clear memory (Menu #.9.1)

Use this menu to delete data in the phone's memory.

Memory status (Menu #.9.2)

Use this menu to check the amount of memory being used for storing data, such as messages, media and document files, Contacts entries, or calendar data. You can also view the amount of shared memory and status of a memory card, if inserted into the phone.

Operator settings (Menu #.0)

Use this menu to set a service provider according to the USIM/SIM card you are using. When you select a service provider, the phone will automatically turn itself off and then back on. You can then see the profiles corresponding to the service provider in the connection menus.

This menu may not be shown depending on your service provider.

Master reset (Menu #.*)

Use this menu to reset the phone's settings you have changed and clear all data you have added.

1. Press [**OK**] to select data you want to reset.
2. Press <**OK**>.
3. Enter the phone password and press <**Confirm**>.



You can change this password. ► p. 104

4. Press <**Yes**>. The phone automatically turns itself off and then back on.

Solve problems

Help and personal needs

To save the time and expense of an unnecessary service call, perform the simple checks in this section before contacting a service professional.

When you switch on your phone, the following messages may appear:

"Please insert SIM card"

- Be sure that the USIM/SIM card is correctly installed.

"Phone lock"

- The automatic locking function has been enabled. You must enter the phone's password before you can use the phone.

"PIN lock"

- You are using your phone for the first time. You must enter the PIN supplied with the USIM/SIM card.
- The PIN lock feature is enabled. Every time the phone is switched on, the PIN has to be entered. To disable this feature, use the **PIN lock** menu.

"PUK lock"

- The PIN code was entered incorrectly three times, and the USIM/SIM card is now blocked. Enter the PUK supplied by your service provider.


"No service," "Network failure," or "Not done" displays

- The network connection has been lost. You may be in a weak signal area. Move and try again.
- You are trying to access an option for which you have no subscription with your service provider. Contact the service provider for further details.

You have entered a number but it was not dialed

- Be sure that you have pressed [↵].
- Be sure that you have accessed the right cellular network.
- Be sure that you have not set an outgoing call barring option.

Your correspondent cannot reach you

- Be sure that your phone is switched on. ([] pressed for more than one second.)
- Be sure that you are accessing the right cellular network.
- Be sure that you have not set an incoming call barring option.




Your correspondent cannot hear you speaking

- Be sure that you have switched on the microphone.
- Be sure that you are holding the phone close enough to your mouth. The microphone is located at the bottom of the phone.

The phone starts beeping and “Low battery” flashes on the display

- Your battery is insufficiently charged. Recharge the battery.

The audio quality of the call is poor

- Check the signal strength indicator on the display (). The number of bars indicates the signal strength from strong () to weak ().
- Try moving the phone slightly or moving closer to a window if you are in a building.

No number is dialled when you re-call a Contacts entry

- Use the Contacts feature to ensure the number has been stored correctly.
- Re-store the number, if necessary.

The battery does not charge properly or the phone sometimes turns itself off

- Wipe the charging contacts both on the phone and on the battery with a clean soft cloth.

If the above guidelines do not help you to solve the problem, take note of:

- The model and serial numbers of your phone
- Your warranty details
- A clear description of the problem

Then contact your local dealer or Samsung after-sales service.

Health and safety information

SAR certification information

This phone meets European Union (EU) requirements concerning exposure to radio waves.

Your mobile phone is a radio transmitter and receiver. It is designed and manufactured to not exceed the limits for exposure to radio-frequency (RF) energy, as recommended by the EU Council. These limits are part of comprehensive guidelines and establish permitted levels of RF energy for the general population. The guidelines were developed by independent scientific organisations through the periodic and thorough evaluation of scientific studies. The limits include a substantial safety margin designed to ensure the safety of all persons, regardless of age and health.

The exposure standard for mobile phones employs a unit of measurement known as Specific Absorption Rate (SAR). The SAR limit recommended by the EU Council is 2.0 W/kg.¹

The highest SAR value for this model phone was 0.795 W/kg.

SAR tests are conducted using standard operating positions with the phone transmitting at its highest certified power level in all tested frequency bands. Although the SAR is determined at the highest certified power level, the actual SAR level of the phone while operating can be well below the maximum value. This is because the phone is designed to operate at multiple power levels so as to use only the power required to reach the network. In general, the closer you are to a base station, the lower the power output of the phone.

1. The SAR limit for mobile phones used by the public is 2.0 watts/kilogram (W/kg) averaged over ten grams of body tissue. The limit incorporates a substantial margin of safety to give additional protection for the public and to account for any variations in measurements. The SAR values may vary, depending on national reporting requirements and the network band.

Before a new model phone is available for sale to the public, compliance with the European R&TTE Directive must be shown. This directive includes as one of its essential requirements the protection of the health and safety of the user and any other person.

Precautions when using batteries

- Never use a charger or battery that is damaged in any way.
- Use the battery only for its intended purpose.
- If you use the phone near the network's base station, it uses less power. Talk and standby time are greatly affected by the signal strength on the cellular network and the parameters set by the network operator.
- Battery charging time depends on the remaining battery charge, the type of battery, and the charger used. The battery can be charged and discharged hundreds of times, but it will gradually wear out. When the operation time is noticeably shorter than normal, it is time to buy a new battery.

- If left unused, a fully charged battery will discharge itself over time.
- Use only Samsung-approved batteries, and recharge your battery only with Samsung-approved chargers. Disconnect the charger from the power source when it is not in use. Do not leave the battery connected to a charger for more than a week, since overcharging may shorten its life.
- Extreme temperatures will affect the charging capacity of your battery: it may require cooling or warming first.
- Do not leave the battery in hot or cold places because the capacity and lifetime of the battery will be reduced. Try to keep the battery at room temperature. A phone with a hot or cold battery may not work temporarily, even when the battery is fully charged. Li-ion batteries are particularly affected by temperatures below 0°C (32°F).
- Do not short-circuit the battery. Accidental short-circuiting can occur when a metallic object like a coin, clip or pen causes a direct connection between the + and – terminals of the battery (metal strips on the battery). For example, do not carry a spare battery in a pocket or bag where the battery may contact metal objects. Short-circuiting the terminals may damage the battery or the object causing the short-circuiting.
- Dispose of used batteries in accordance with local regulations. Always recycle. Do not dispose of batteries in a fire.

Road safety

Your wireless phone gives you the powerful ability to communicate by voice, almost anywhere, anytime. But an important responsibility accompanies the benefits of wireless phones, one that every user must uphold.

When you are driving a car, driving is your first responsibility. When using your wireless phone while driving, follow local regulations in the country or region you are in.

Operating environment

Remember to follow any special regulations in force in the area you are in, and always switch off your phone whenever it is forbidden to use it, or when it may cause interference or danger.

When connecting the phone or any accessory to another device, read its user's guide for detailed safety instructions. Do not connect incompatible products.

As with other mobile radio transmitting equipment, users are advised that for the satisfactory operation of the equipment and for the safety of personnel, it is recommended that the equipment should only be used in the normal operating position (held to your ear with the antenna pointing over your shoulder).

Electronic devices

Most modern electronic equipment is shielded from radio frequency (RF) signals. However, certain electronic equipment may not be shielded against the RF signals from your wireless phone. Consult the manufacturer to discuss alternatives.

Pacemakers

Pacemaker manufacturers recommend that a minimum distance of 15 cm (6 inches) be maintained between a wireless phone and a pacemaker to avoid potential interference with the pacemaker. These recommendations are consistent with the independent research and recommendations of Wireless Technology Research. If you have any reason to suspect that interference is taking place, switch off your phone immediately.

Hearing aids

Some digital wireless phones may interfere with some hearing aids. In the event of such interference, you may wish to consult your hearing aid manufacturer to discuss alternatives.

Other medical devices

If you use any other personal medical devices, consult the manufacturer of your device to determine if it is adequately shielded from external RF energy.

Your physician may be able to assist you in obtaining this information.

Switch off your phone in health care facilities when regulations posted in these areas instruct you to do so.

Vehicles

RF signals may affect improperly installed or inadequately shielded electronic systems in motor vehicles. Check with the manufacturer or its representative regarding your vehicle.

You should also consult the manufacturer of any equipment that has been added to your vehicle.

Posted facilities

Switch off your phone in any facility where posted notices require you to do so.

Potentially explosive environments

Switch off your phone when in any area with a potentially explosive atmosphere, and obey all signs and instructions. Sparks in such areas could cause an explosion or fire resulting in bodily injury or even death.

Users are advised to switch off the phone while at a refuelling point (service station). Users are reminded of the need to observe restrictions on the use of radio equipment in fuel depots (fuel storage and distribution areas), chemical plants, or where blasting operations are in progress.

Areas with a potentially explosive atmosphere are often but not always clearly marked. They include the areas below decks on boats, chemical transfer or storage facilities, vehicles using liquefied petroleum gas, such as propane or butane, areas where the air contains chemicals or particles, such as grain, dust or metal powders, and any other area where you would normally be advised to turn off your vehicle engine.


Emergency calls

This phone, like any wireless phone, operates using radio signals, wireless, and landline networks as well as user-programmed functions, which cannot guarantee connection in all conditions.

Therefore, you should never rely solely on any wireless phone for essential communications like medical emergencies.

To make or receive calls, the phone must be switched on and in a service area with adequate signal strength. Emergency calls may not be possible on all wireless phone networks or when certain network services and/or phone features are in use. Check with local service providers.

To make an emergency call:

1. Switch on the phone.
2. Key in the emergency number for your present location. Emergency numbers vary by location.
3. Press [].

Certain features like Call Barring may need to be deactivated before you can make an emergency call. Consult this document and your local cellular service provider.

Other important safety information

- Only qualified personnel should service the phone or install the phone in a vehicle. Faulty installation or service may be dangerous and may invalidate any warranty applicable to the device.
- Check regularly that all wireless phone equipment in your vehicle is mounted and operating properly.
- Do not store or carry flammable liquids, gases, or explosive materials in the same compartment as the phone, its parts, or accessories.
- For vehicles equipped with an air bag, remember that an air bag inflates with great force. Do not place objects, including installed or portable wireless equipment, in the area over the air bag or in the air bag deployment area. Improperly installed wireless equipment could result in serious injury if the air bag inflates.

- Switch off your phone before boarding an aircraft. It is dangerous and illegal to use wireless phones in an aircraft because they can interfere with the operation of the aircraft.
- Failure to observe these instructions may lead to the suspension or denial of telephone services to the offender, or legal action, or both.
- Do not use the phone with a wet hand. Doing so may cause an electric shock to you or damage to the phone.
- Do not use or store the phone in dusty, dirty areas, as its moving parts may be damaged.
- Do not store the phone in hot areas. High temperatures can shorten the life of electronic devices, damage batteries, and warp or melt certain plastics.
- Do not store the phone in cold areas. When the phone warms up to its normal operating temperature, moisture can form inside the phone, which may damage the phone's electronic circuit boards.

Care and maintenance

Your phone is a product of superior design and craftsmanship and should be treated with care. The suggestions below will help you fulfill any warranty obligations and allow you to enjoy this product for many years.

- Keep your phone and all its parts and accessories out of the reach of small children and pets. They may accidentally damage these things or choke on small parts.
- Keep the phone dry. Precipitation, humidity, and liquids contain minerals that corrode electronic circuits.
- Do not drop, knock, or shake the phone. Rough handling can break internal circuit boards.
- Do not use harsh chemicals, cleaning solvents, or strong detergents to clean the phone. Wipe it with a soft cloth.
- Do not paint the phone. Paint can clog the device's moving parts and prevent proper operation.

- Do not put the phone in or on heating devices, such as a microwave oven, stove, or radiator. The phone may explode when overheated.
- When the phone or battery gets wet, the label indicating water damage inside the phone changes colour. In this case, phone repairs are no longer guaranteed by the manufacturer's warranty, even if the warranty for your phone has not expired.
- If your phone has a flash or light, do not use it too close to the eyes of people or animals. This may cause damage to their eyes.
- Use only the supplied or an approved replacement antenna. Unauthorised antennas or modified accessories may damage the phone and violate regulations governing radio devices.
- If the phone, battery, charger, or any accessory is not working properly, take it to your nearest qualified service facility. The personnel there will assist you, and if necessary, arrange for service.

Index

A

- ABC mode, text input • 27
- Alarm • 94
- Answering
 - call • 30, 34
 - second call • 31
- Auto redial • 102
- Auto reject • 100

B

- Background image • 97
- Backlight time, set • 98
- Barring, calls • 101, 102, 103
- Battery
 - charging • 7
 - low indicator • 8
 - precautions • 116
- Bluetooth
 - receiving, data • 109
 - sending, data • 108
 - settings • 107
- Broadcast messages • 58
- Browser, web • 47, 88

C

- Calculator • 92
- Calendar • 78
- Call cost • 37
- Call log • 36
- Call time • 37

- Caller group • 41
- Calls
 - answering • 30, 34
 - barring • 101, 102
 - diverting • 101, 102
 - holding • 31
 - making • 29
 - redialling • 30
 - rejecting • 30
 - transferring • 32
 - waiting • 102

Camera

- photos • 82
 - videos • 85
- ## Characters, enter • 27
- ## Configuration messages • 58
- ## Connection tone • 100

Contacts

- adding • 38
- deleting • 40
- editing • 40
- finding • 40
- options • 40
- speed dialling • 105

Converter • 93

Creating messages

- e-mail • 54
- MMS • 52
- SMS • 51

D

- Date, set • 97
- Deleting
 - call log • 36
 - contacts • 40
 - e-mail • 59, 63
 - events • 80
 - MMS • 57, 63
 - photos • 71
 - SMS • 56, 63
 - video clips • 72
- Delivery reports, message • 63, 64
- Dialling display, set • 98
- Display
 - backlight, set • 98
 - brightness • 98
 - icons • 10
 - language • 98
 - layout • 10
 - settings • 97
- Diverting, calls • 101, 102, 103
- Document files • 75
- DRM (Digital Rights Management) • 69
- DTMF tones, send • 33

E

E-mails

- creating/sending • 54
- deleting • 59, 63

- settings • 66
- viewing • 58

Emergency calls • 120

F

FDN (Fixed Dialling Number) mode • 104

File viewer • 75

G

Games • 74

Greeting message • 97

H

Health and safety • 115

Holding, call • 31

I

Icons, description • 10

Images, downloaded • 69

Inbox, messages

- e-mail • 58
- SMS/MMS • 55

International calls • 29

Internet • 47, 88

J

Java applications • 74

K

Key tones

- sending/muting • 33
- settings • 96

L

Language, select • 98

Last number, redial • 30

LCD brightness • 98

Locking

- call log • 103
- contacts • 103
- media files • 103
- messages • 103
- phone • 103
- scheduled things • 103
- USIM/SIM card • 103

Low battery indicator • 8

M

Media player • 42

Memory card

- accessing • 69
- installing • 25

Memory status

- downloaded items • 77
- messages • 69
- scheduled things • 80, 81

Messages

- broadcast • 58
- configuration • 58
- e-mail • 54, 58
- greeting • 97
- MMS • 52, 57
- push • 58
- SMS • 51, 56

Minute minder • 100

Missed alarm events • 81

MMS messages

- creating/sending • 52
- deleting • 57, 63
- settings • 64
- viewing • 57

Mobile tracker • 104

Multiparty-call • 32

My files • 69

N

Name card • 40

Names

- entering • 27
- searching • 40

Network selection • 109

Numbers

- searching • 40
- storing • 38

O

Outbox, messages • 60

P

Password

- call barring • 102
- phone • 104

Phone

- care and maintenance • 121
- display • 10
- icons • 10
- locking • 103

- password • 104
- switching on/off • 8
- unpacking • 6

Photos

- editing • 70
- taking • 82
- viewing • 70
- PIN, change • 104
- PIN2, change • 104
- Privacy • 103
- Problems, solve • 113
- Profiles • 95
- Push messages • 58

R

- Received messages
 - e-mail • 58
 - MMS/SMS • 55

Recording

- videos • 85
- voice memos • 90

Redialling

- automatically • 102
- manually • 30

Ringtone volume • 96

- Road safety • 117
- Roaming • 109

S

Safety

- information • 115
- precaution • 1

- Security calls • 103
- Sent messages • 61
- Shortcuts • 98
- Silent mode • 14
- SIM card
 - inserting • 7
 - locking • 103
- Slide tone • 96
- SMS messages
 - deleting • 56, 63
 - settings • 63
 - viewing • 56
- Sound profiles • 95
- Speakerphone • 32
- Speed dial • 105
- Stopwatch • 94
- Switching applications • 24
- Switching on/off
 - microphone • 33
 - phone • 8

T

- T9 mode, text input • 28
- Text, enter • 27
- Time, set • 97
- Timer • 93

U

USIM card

- inserting • 7
- locking • 103

V

Video calls

- answering • 34
- making • 34
- options • 34
- setting • 102

Videos

- playing • 72
- recording • 85

Voice recorder

- playing • 91
- recording • 90

Vicemail server • 68

W

- Waiting call • 102, 103
- Wallpaper • 97
- Web browser
 - access • 47
 - bookmarks • 49
- World clock • 92

Declaration of Conformity (R&TTE)

For the following product :

GSM900/GSM1800/GSM1900/WCDMA with Bluetooth

Portable Cellular Telephone

(Product description)

SGH-Z720

(Model name)

Manufactured at :

- Samsung Electronics Co., Ltd, 94-1, Imsoo-Dong, Gumi City, Kyung-Buk, Korea,

730-350

(factory name, address)

to which this declaration relates, is in conformity with the following standards and/or other normative documents,

| | |
|---------|--|
| Safety | : EN 60950-1:2001 |
| EMC | : EN 301 489-01 v1.4.1 (08-2002) EN 301 489-07 v1.2.1 (08-2002) EN 301 489-17 v1.2.1 (08-2002) EN 301 489-24 v1.2.1 (11-2002) |
| SAR | : EN 50360:2001 EN 50361:2001 |
| Network | : EN 301 511 v9.0.2 (03-2003) EN 301 908-1 v2.2.1 (10-2003) EN 301 908-2 v2.2.1 (10-2003) EN 300 328 v1.6.1 (11-2004) |

We hereby declare that [all essential radio test suites have been carried out and that] the above named product is in conformity to all the essential requirements of Directive 1999/5/EC.

The conformity assessment procedure referred to in Article 10 and detailed in Annex[IV] of Directive 1999/5/EC has been followed with the involvement of the following Notified Body(ies):

BABT, Balfour House, Churchfield Road,
Walton-on-Thames, Surrey, KT12 2TD, UK
Identification mark: 0168

CE 0168

The technical documentation kept at :

Samsung Electronics QA Lab.

which will be made available upon request.
(Representative in the EU)

Samsung Electronics Euro QA Lab.
Blackbushe Business Park, Saxony Way,
Yateley, Hampshire, GU46 8GG, UK

2006.11.02

(place and date of issue)



Yong-Sang Park / S. Manager

(name and signature of authorized person)

* It is not the address of Samsung Service Centre. For the address or the phone number of Samsung Service Centre, see the warranty card or contact the retailer where you purchased your phone.

- * Depending on the software installed or your service provider or country, some of the descriptions in this guide may not match your phone exactly.
- * Depending on your country, your phone and accessories may appear different from the illustrations in this guide.

SAMSUNG ELECTRONICS



World Wide Web
<http://www.samsungmobile.com>

Printed in Korea
Code No.:GH68-13032A
English (EU). 01/2007. Rev. 1.0