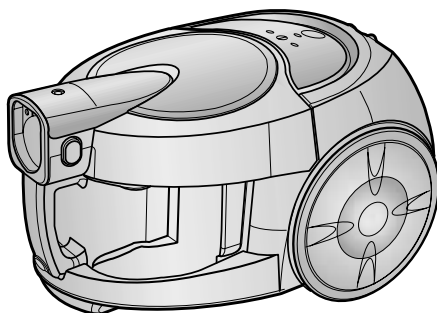



# Operating Instructions

## VACUUM CLEANER



- \* Before operating this unit, please read the instructions carefully.
- \* Indoor use only.

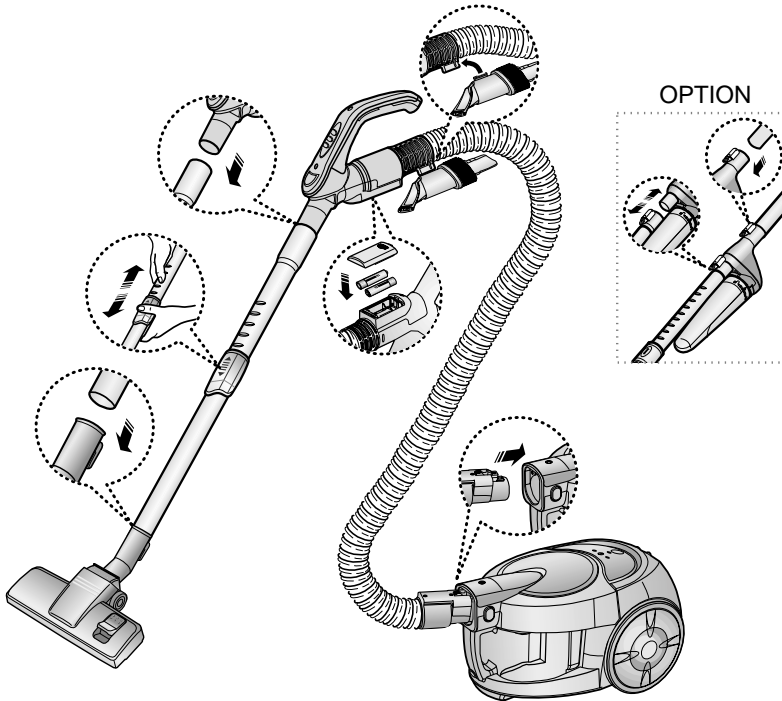
Register your product at [www.samsung.com/global/register](http://www.samsung.com/global/register)

## **IMPORTANT SAFEGUARDS**

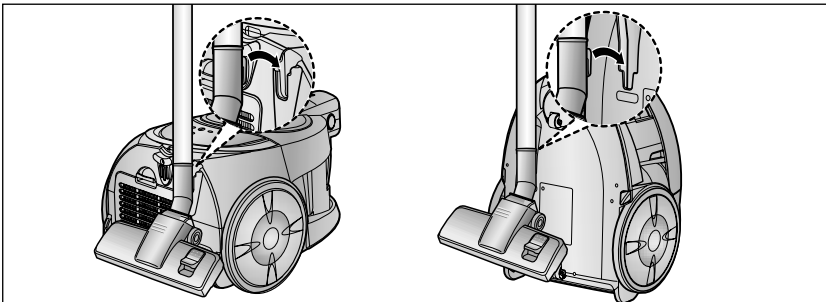
1. Read all instructions carefully. Before switching on, make sure that the voltage of your electricity supply is the same as that indicated on the rating plate on the bottom of the cleaner.
2. **WARNING:** Do not use the vacuum cleaner when rug or floor is wet.  
Do not use to suck up water.
3. Close supervision is necessary when any appliance is used by or near children. Do not allow the vacuum cleaner to be used as a toy. Do not allow the vacuum cleaner to run unattended at any time. Use the vacuum cleaner only for its intended use as described in these instructions.
4. Do not use the vacuum cleaner without a dust bag (dust bin). Empty the dust bin before it is full in order to maintain the best efficiency.
5. Do not use the vacuum cleaner to pick up matches, live ashes or cigarette butts. Keep the vacuum cleaner away from stoves and other heat sources. Heat can deform and discolour the plastic parts of the unit.
6. Avoid picking up hard, sharp objects with the vacuum cleaner as they may damage the cleaner parts. Do not stand on the hose assembly. Do not put a weight on the hose. Do not block the suction or the exhaust port.
7. Switch the vacuum cleaner off on the body of the machine before unplugging from the electrical outlet. Disconnect plug from the electrical outlet before changing the dust bag or dust container. To avoid damage, please remove the plug by grasping the plug itself, not by pulling on the cord.
8. This appliance is not intended for use by young persons or infirm persons without supervision unless they have been adequately supervised by a responsible person to ensure that they can use the appliance safely.  
Young children should be supervised to ensure that they do not play with the appliance.
9. The plug must be removed from the socket outlet before cleaning or maintaining the appliance.
10. The use of an extension cord is not recommended.
11. If your vacuum cleaner is not operating correctly, switch off the power supply and consult an authorized service agent.
12. If the supply cord is damaged, it must be replaced by the manufacturer or its service agent or a similarly qualified person in order to avoid a hazard.
13. Don't carry the vacuum cleaner by holding the hose.  
Use the handle on the vacuum cleaner set.

# 1 ASSEMBLING THE CLEANER

**NOTE :** Use the Cyclone Filter to vacuum for long without emptying the Cassette Filter.



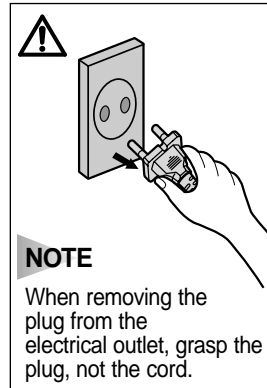
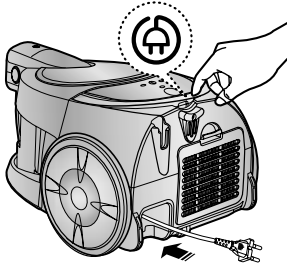
► Features may vary according to model.



For storage, park the floor nozzle.

## 2 OPERATING THE CLEANER

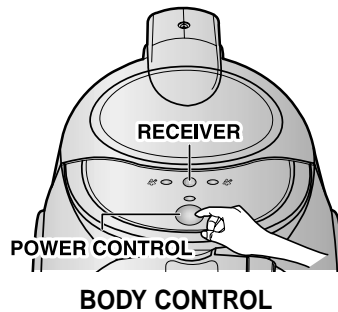
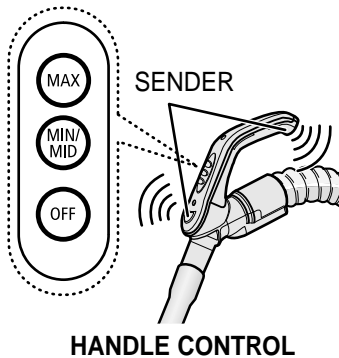
### 2-1 POWER CORD



#### NOTE

When removing the plug from the electrical outlet, grasp the plug, not the cord.

### 2-2 POWER-CONTROL (INFRARED-CONTROL)

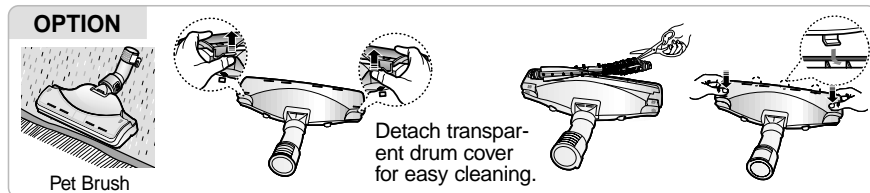
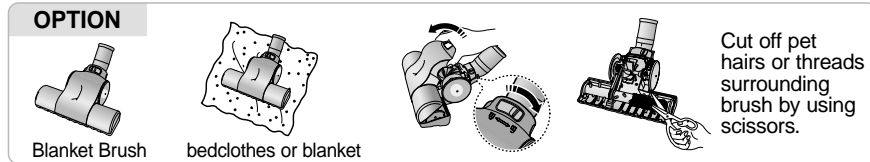
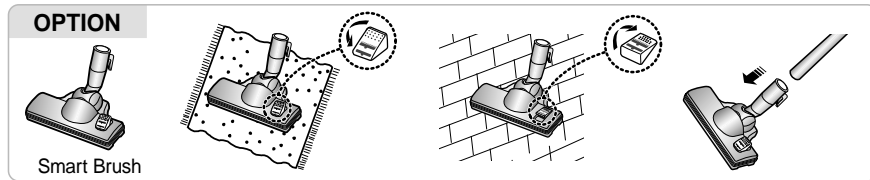
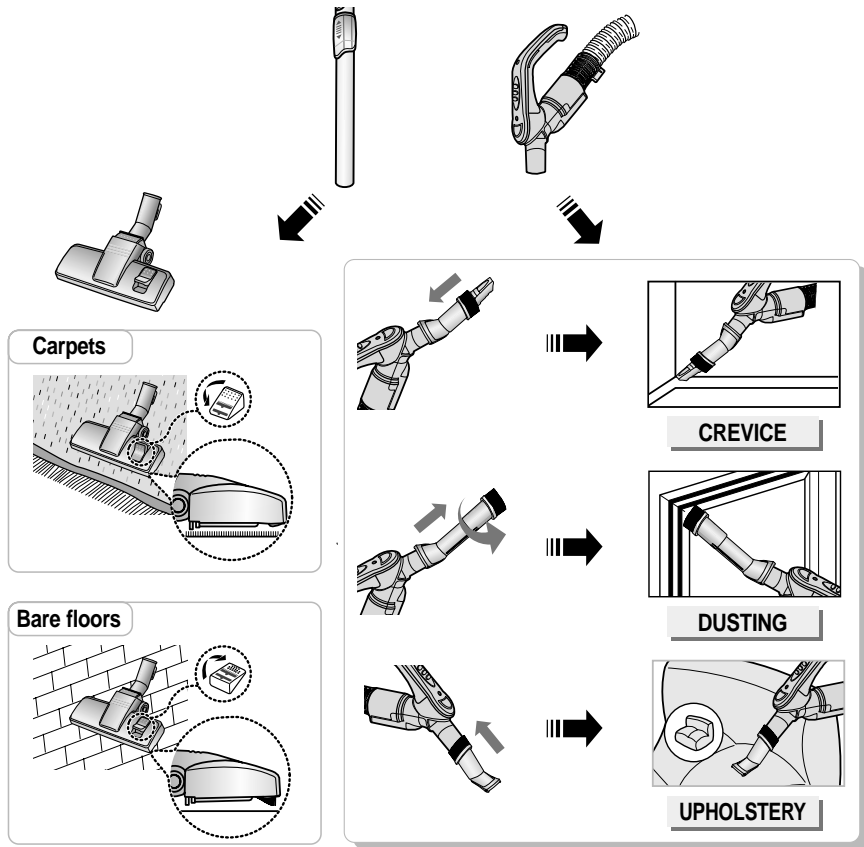


Press Power Control on the main body to turn on the power (MAX). And, press it again to turn it off (STOP).

#### NOTE

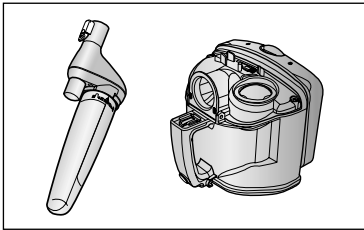
1. When using the control button for suction power, make sure that the transmitter of the remote controller not be blocked by your body.
2. When operating the cleaner in a room with a high ceiling or under intensive light, the suction power controlling button may not work properly. So, use the "Power Control" button on the main body.
3. When the battery is run down, it does not work with the button pressed on the handle control part. In this case, replace the battery. (How to change: Refer to User Manual No.7)

## 2-3 USING FLOOR TOOLS

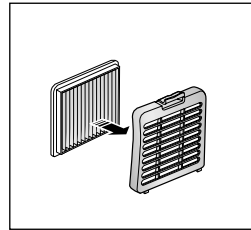


### 3 NANO SILVER FUNCTION (OPTIONAL)

Silver nano particles are incorporated into the dust bin and the exhaust filter.



DUST BIN

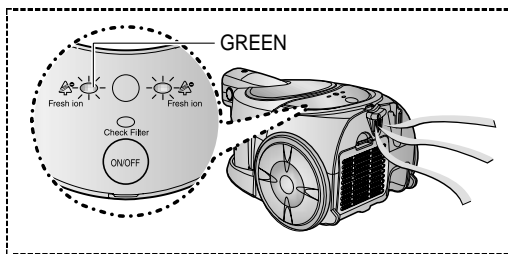


EXHAUST FILTER

### 4 NEGATIVE IONS FUNCTION (OPTIONAL)

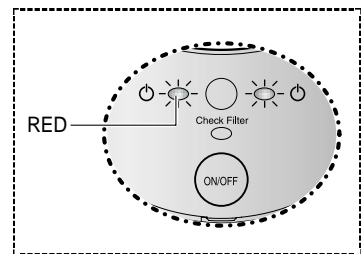
#### - Model with the negative ion function

When power is applied to the unit, the "GREEN" LED turns on and negative ions come out.



#### - Model without the negative ion function

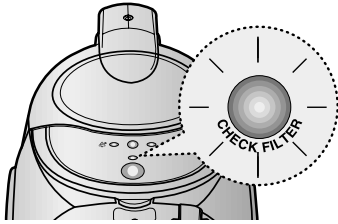
When power is applied to the unit, the "RED" LED turns on.



#### ⚠ WARNING

1. Do not put it near the TV with its power on.
2. Do not put an iron skewer into the negative ion discharge port.
3. Do not pour liquid, etc into the negative ion discharge port.
4. Do not put any object into ionizer opening.

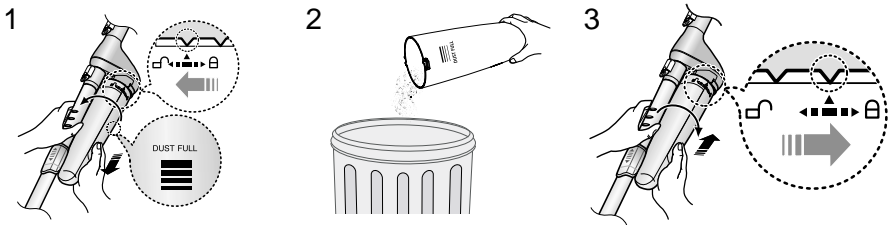
# 5 INDICATOR LIGHTS



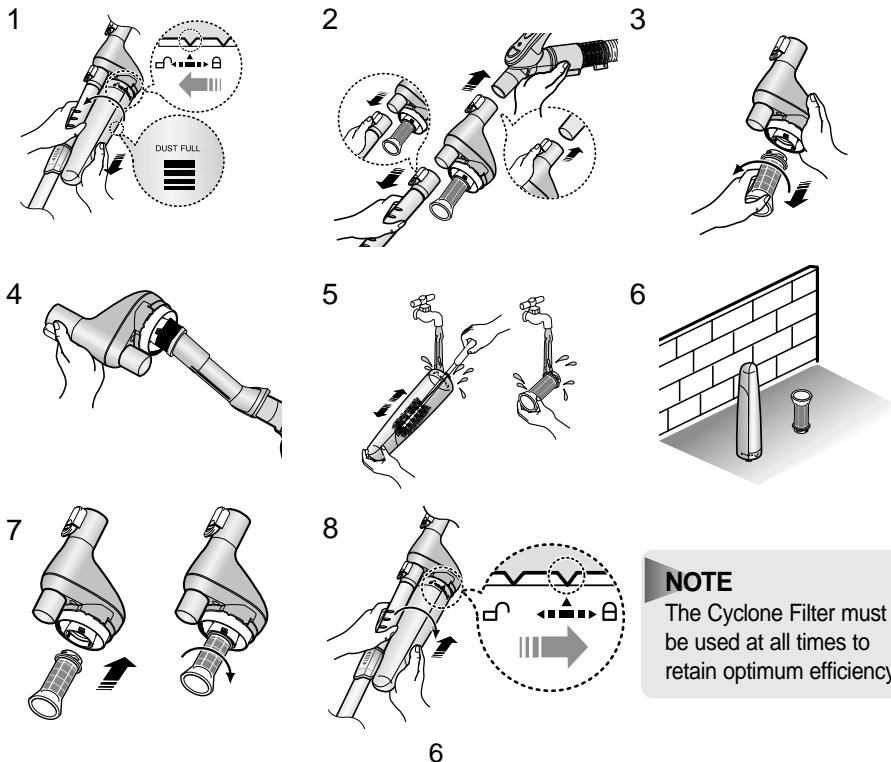
When the indicator light comes on, please empty and clean the Cyclone Filter (5-1) and the Basket filter (5-2) as shown in the following illustrations.

## 5-1 CLEANING THE CYCLONE FILTER (OPTIONAL)

### 5-1-1 EMPTYING THE CYCLONE FILTER



### 5-1-2 CLEANING THE CYCLONE FILTER

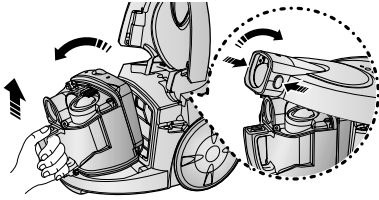


**NOTE**  
The Cyclone Filter must be used at all times to retain optimum efficiency.

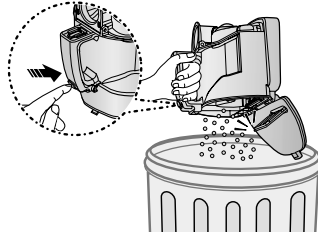
## 5-2 CLEANING THE BASKET FILTER

### 5-2-1 EMPTYING THE BASKET FILTER

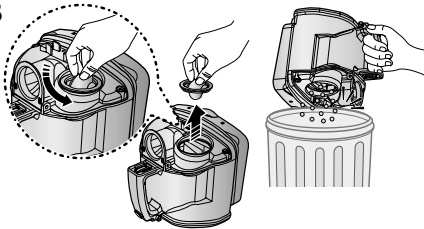
1



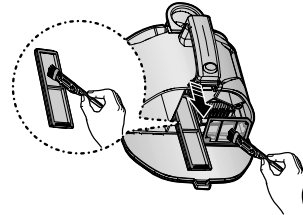
2



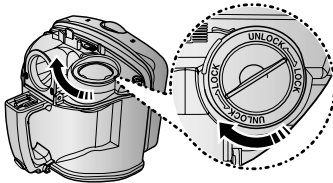
3



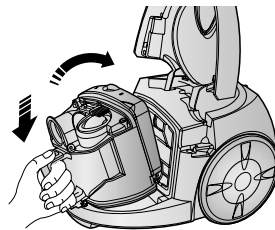
4



5

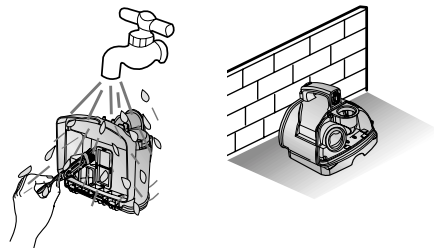


6



#### NOTE

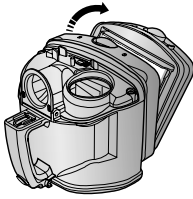
You can rinse the basket filter with water.  
Do not immerse the whole cleaner in water.  
Ensure completely dry before replacing.



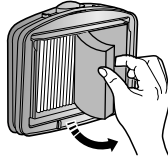


### 5-2-2 CLEANING THE CASE FILTER

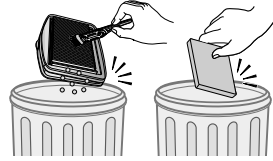
1



2



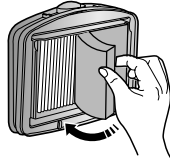
3



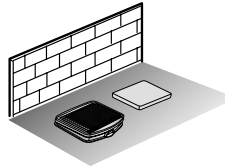
4



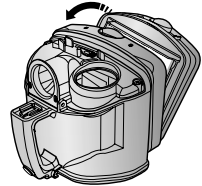
5



6



7

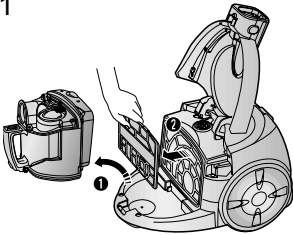


**NOTE :** Please do not throw away the filter. It must be retained to maintain cleaning efficiency.

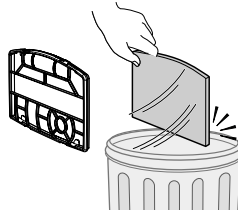
## 6 CLEANING THE FILTER

### 6-1 CLEANING THE INLET FILTER

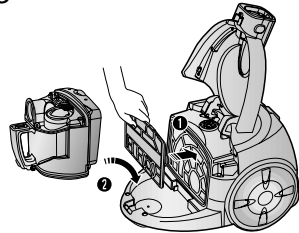
1



2

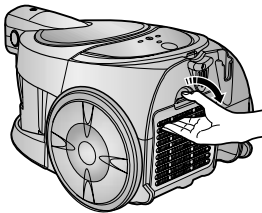


3

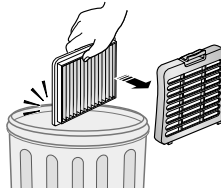


### 6-2 CLEANING THE OUTLET FILTER

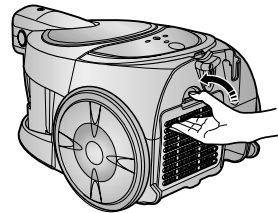
1



2

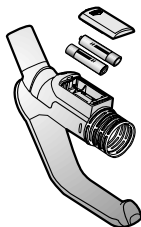


3



**NOTE :** Please do not throw away the filter. It must be retained to maintain cleaning efficiency.

# 7 CHANGE THE BATTERY



**BATTERY TYPE : AA Size**



## NOTE

When the vacuum cleaner does not operate, replace the batteries. If the problem persists, please contact our authorized dealer.



## WARNING

1. Never disassemble or recharge the batteries.
2. Never heat up the batteries or throw them into fire.
3. Do not reverse (+),(-) terminals.
4. Dispose the batteries properly.

## - IF YOU HAVE A PROBLEM

PROBLEM	CAUSE	REMEDY
Motor does not start.	No power supply. Thermal cut-out.	Check cable, plug and socket. Leave to cool.
Suction force is gradually decreasing.	Nozzle, suction hose or tube is blocked.	Check for blockage and remove.
Cord does not rewind fully.	Check that the cord is not twisted or wound unevenly.	Pull the cord out 2-3m and push down the cord rewind button.
Vacuum cleaner does not pick up dirt.	Crack or hole in hose.	Check hose and replace if required.
Low or decreasing suction	Filter is full with dust.	Please check filter and, if required, clean as illustrated in the instructions.

