

VCMA16 series  
VCMA18 series  
VCMA20 series

# Vacuum Cleaner

## user manual

- \* Before operating this unit, please read the instructions carefully.
- \* For indoor use only.

English

imagine the possibilities

Thank you for purchasing a Samsung product.  
To receive a more complete service,  
please register your product at  
[www.samsung.com/register](http://www.samsung.com/register)

**SAMSUNG**

# safety information

---

## SAFETY INFORMATION

---



- Before operating the appliance, please read this manual thoroughly and retain it for your reference.



- Because these following operating instructions cover various models, the characteristics of your vacuum cleaner may differ slightly from those described in this manual.

## CAUTION/WARNING SYMBOLS USED

---



Indicates that a danger of death or serious injury exists.



Indicates that a risk of personal injury or material damage exists.

## OTHER SYMBOLS USED

---



Represents something you must NOT do.



Represents something you must follow.



Indicates that you must disconnect the power plug from the socket.

# safety information

---

## IMPORTANT SAFEGUARDS

---

1. Read all instructions carefully. Before switching on, make sure that the voltage of your electricity supply is the same as that indicated on the rating plate on the bottom of the cleaner.
2. **WARNING:** Do not use the vacuum cleaner when rug or floor is wet. Do not use to suck up water.
3. Close supervision is necessary when any appliance is used by or near children. Do not allow the vacuum cleaner to be used as a toy. Do not allow the vacuum cleaner to run unattended at any time. Use the vacuum cleaner only for its intended use as described in these instructions.
4. Do not use the vacuum cleaner without a dust bin. Empty the dust bin before it is full in order to maintain the best efficiency.
5. Slide to the Stop(or Min) position before inserting a plug into the electrical outlet.
6. Do not use the vacuum cleaner to pick up matches, live ashes or cigarette butts.  
Keep the vacuum cleaner away from stoves and other heat sources. Heat can deform and discolour the plastic parts of the unit.
7. Avoid picking up hard, sharp objects with the vacuum cleaner as they may damage the cleaner parts. Do not stand on the hose assembly. Do not put weight on the hose.  
Do not block the suction or the exhaust port.

# safety information

---

8. Switch the vacuum cleaner off on the body of the machine before unplugging from the electrical outlet. Disconnect the plug from the electrical outlet before changing the dust bag or dust container. To avoid damage, please remove the plug by grasping the plug itself, not by pulling on the cord.
9. This appliance can be used by children aged from 8 years and above and persons with reduced physical, sensory or mental capabilities or lack of experience and knowledge if they have been given supervision or instruction concerning use of the appliance in a safe way and understand the hazards involved.
10. Children shall not play with the appliance.
11. Cleaning and user maintenance shall not be made by children without supervision.
12. The use of an extension cord is not recommended.
13. If your vacuum cleaner is not operating correctly, switch off the power supply and consult an authorized service agent.
14. If the supply cord is damaged, it must be replaced by the manufacturer or its service agent or a similarly qualified person in order to avoid a hazard.
15. Don't carry the vacuum cleaner by holding the hose. Use the handle on the vacuum cleaner set.
16. Unplug the cleaner when not in use. Turn off the power switch before unplugging.

# contents

---

## **ASSEMBLING THE CLEANER**

06

## **OPERATING THE CLEANER**

07

- 07 ON/OFF Switch
- 07 Power Cord
- 08 Power-Control

## **MAINTAIN TOOLS AND FILTER**

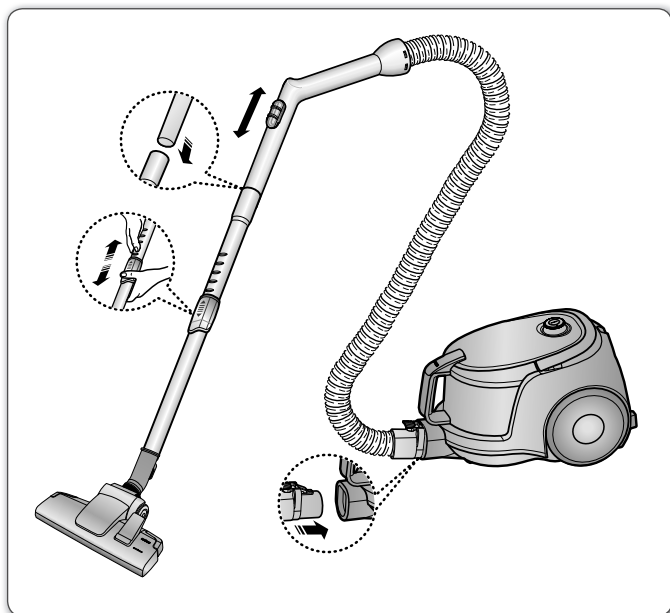
09

- 09 Using accessory
- 10 Maintain floor tools
- 11 Emptying the dust bin
- 12 When to clean the dust pack
- 13 Cleaning the dust pack
- 14 Cleaning the outlet filter

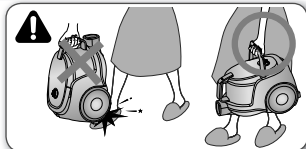
## **TROUBLESHOOTING**

15

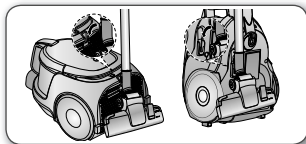
# assembling the cleaner



- ★ Please do not press the button of dust bin handle when carrying machine.



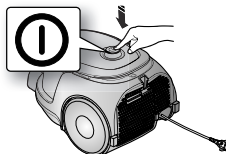
- ★ For storage, park the floor nozzle.



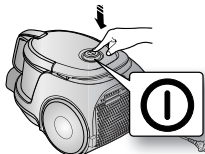
# operating the cleaner

## ON/OFF SWITCH

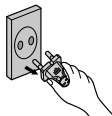
### 1) BODY CONTROL TYPE



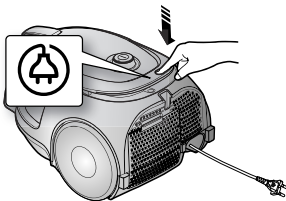
### 2) ON/OFF TYPE



- When removing the plug from the electrical outlet, grasp the plug, not the cord.



## POWER CORD



## POWER-CONTROL

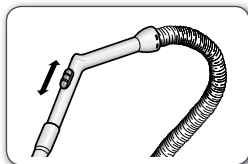
---

### BODY-CONTROL TYPE / ON/OFF TYPE

---

- HOSE

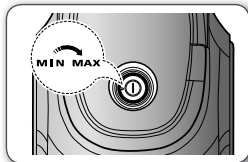
To reduce suction for cleaning draperies, small rugs, and other light fabrics, pull the tap air until the hole is open.



- BODY (BODY-CONTROL TYPE ONLY)

**MIN** = For delicate surface e.g. net curtains.

**MAX** = For hard floors and heavily soiled carpets.



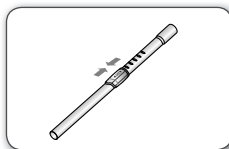


# maintain tools and filter

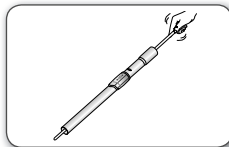
## USING ACCESSORY

### Pipe (Option)

- Adjust the length of the telescopic pipe by sliding the length control button located in the center of the telescopic pipe back and forth.

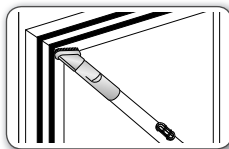


- To check for blockages, separate the telescopic pipe and adjust to shorten. This allows for easier removal of waste clogging the tube.

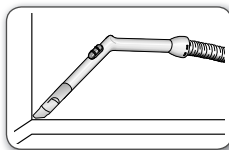


### Accessory

- Dusting brush for furniture, shelves, books, etc.



- Crevice tool for radiators, crevices, corners, between cushions.



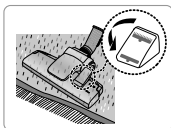
## MAINTAIN FLOOR TOOLS

---

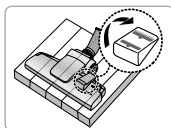
### 2-Step Brush

---

- Adjust the inlet lever according to the floor surface.



**Carpet Cleaning**



**Floor Cleaning**

- Remove waste matter completely if the inlet is blocked.



# maintain tools and filter

## EMPTYING THE DUST BIN



1. Once dust reaches the MAX mark, or suction is noticeably reduced during cleaning, empty the dust bin.



2. Take the dust bin out by pressing the button.



3. Separate the dust bin cover.



4. Throw away dust into the bin.

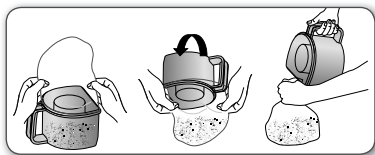


5. Close the dust bin cover.

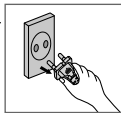
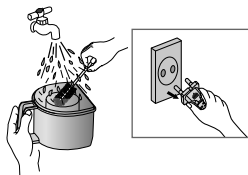


6. Before use, push the dust bin into the main body of the vacuum cleaner until you hear the "click" sound.

- Empty into a plastic bag (recommended for asthma/allergy sufferers)



You may rinse the dust bin with cold water.

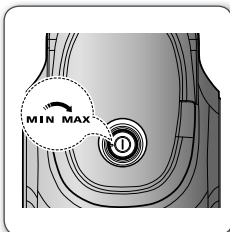


## WHEN TO CLEAN THE DUST PACK

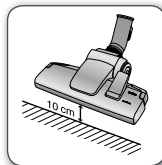
---

- If suction is noticeably reduced during cleaning, please check the dust pack as indicated below.

**Turn the vacuum power to 'MAX'.**



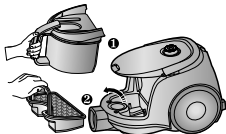
If suction is noticeably reduced with the inlet floating 10cm above flat floor, clean it.



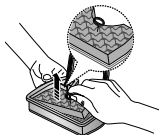
-  When suction is noticeably reduced continuously, please cleaning the Dust Pack as shown in the following illustration.

## CLEANING THE DUST PACK

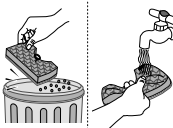
1. Remove the dust bin and dust pack as shown.



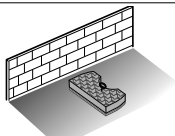
2. Remove the sponge and filter from the dust pack.



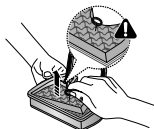
3. Wash the sponge and the filter of the dust pack with water.



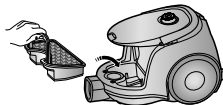
4. Let the sponge and filter dry in the shade for more than 12 hours.




5. Put the sponge and filter into the dust pack.



6. Put the assembled dust pack into the main body.



 Make sure the filter is completely dry before putting it back into the vacuum cleaner. Allow 12 hours for it to dry.

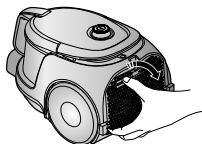


# maintain tools and filter

---

## CLEANING THE OUTLET FILTER

---



Press the fixed frame part at the back of the main body to remove.



Remove and replace the blocked outlet filter.



Replacement filters are available at your local Samsung distributor.

# troubleshooting

PROBLEM	SOLUTION
Motor dows not start.	<ul style="list-style-type: none"><li>• Check cable, pulg and socket.</li><li>• Leave to cool.</li></ul>
Suction force is gradually decreasing.	<ul style="list-style-type: none"><li>• Check for blockage and remove.</li></ul>
Cord does not rewind fully.	<ul style="list-style-type: none"><li>• Pull the cord out 2-3m and push down the cord rewind button.</li></ul>
Vacuum cleaner dows not pick up dirt.	<ul style="list-style-type: none"><li>• Check hose and replace if required.</li></ul>
Low or decreasing suction	<ul style="list-style-type: none"><li>• Please check filter and, if required, clean as illustrated in the instructions. if filters are out of condition change them to new ones.</li></ul>
Body overheating	<ul style="list-style-type: none"><li>• Please check filters, If required clean as illustrated in the instruction.</li></ul>
Static eliecticity discharge	<ul style="list-style-type: none"><li>• Please decrease power suction.</li></ul>

If you have any questions or comments relating to Samsung products, please contact the SAMSUNG customer care center.

COUNTRY	CUSTOMER CARE CENTER	WEB SITE
AUSTRALIA	1300 362 603	<a href="http://www.samsung.com/au">www.samsung.com/au</a>
HONG KONG	3698-4698	<a href="http://www.samsung.com/hk">www.samsung.com/hk</a> <a href="http://www.samsung.com/hk_en">www.samsung.com/hk_en</a>
MALAYSIA	1800-88-9999	<a href="http://www.samsung.com/my">www.samsung.com/my</a>
SINGAPORE	1800-SAMSUNG(7267864)	<a href="http://www.samsung.com/sg">www.samsung.com/sg</a>



If you have any questions or comments relating to Samsung products, please contact the SAMSUNG customer care center.

COUNTRY	CUSTOMER CARE CENTER	WEB SITE
AUSTRALIA	1300 362 603	<a href="http://www.samsung.com/au">www.samsung.com/au</a>
HONG KONG	3698-4698	<a href="http://www.samsung.com/hk">www.samsung.com/hk</a> <a href="http://www.samsung.com/hk_en">www.samsung.com/hk_en</a>
MALAYSIA	1800-88-9999	<a href="http://www.samsung.com/my">www.samsung.com/my</a>
SINGAPORE	1800-SAMSUNG(7267864)	<a href="http://www.samsung.com/sg">www.samsung.com/sg</a>
INDIA	1800 3000 8282 1800 266 8282	<a href="http://www.samsung.com/in">www.samsung.com/in</a>



Code No. DJ68-00685E REV(0.1)