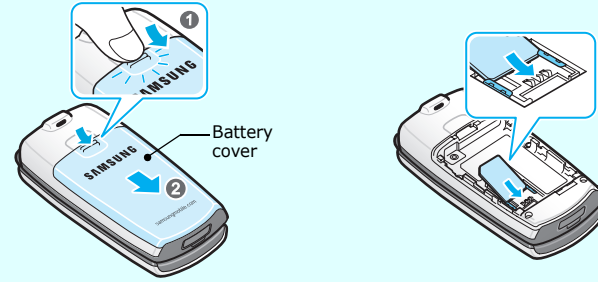
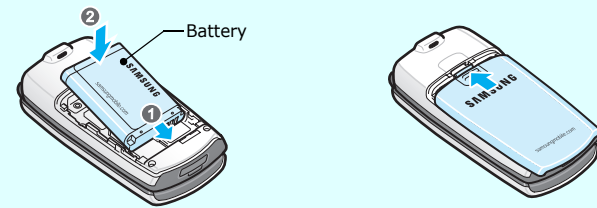


Installing the battery

1. Remove the battery cover and insert the UIM card.

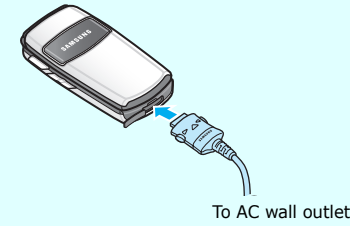


2. Install the battery and replace the cover.

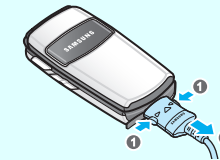


Charging the battery

1. Plug the supplied travel adapter.

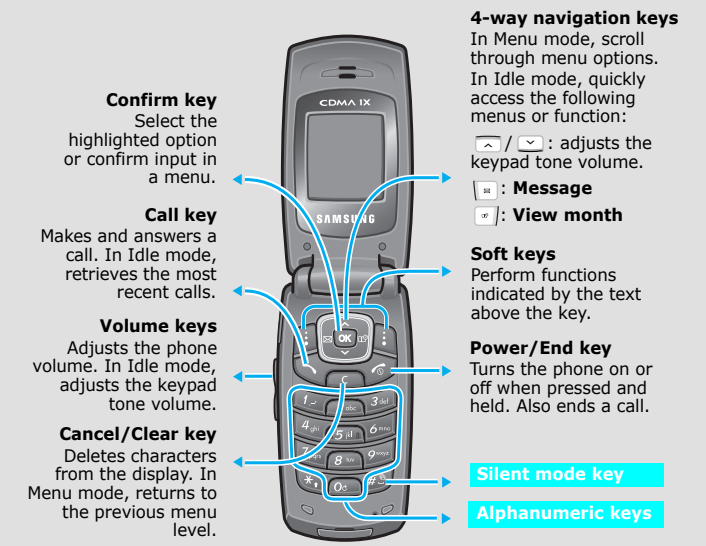


2. When charging is finished, unplug the adapter.



Note: Do not remove the battery from the phone without unplugging the adapter first. Otherwise, the phone may be damaged.

Phone layout and key functions



Silent mode Disables all sounds on the phone, when pressed and held in Idle mode. To exit, press and hold this key again.

Display

Your phone is in Idle mode when you are not on a call or using a menu. You must be in Idle mode to dial a phone number.

The display has three areas.

Your phone displays the following status indicators on the top of the screen:

Icon	Description
	Received signal strength
	Call in progress
	Out of service area; you can not make or receive calls
	Roaming
	SOS message feature active
	New SMS message or New voicemail or urgent message (blinking)
	Alarm set
	Lock mode
	Restriction on
	Ringer type setting
	• : Ringer only
	• : Silent
	• : 1 beep
	• : Vibration
	• : Vib. & ringer
	• : Vib. then ringer
	• : Ringer then vib.
	Silent mode

Battery power level

Switching on or off the phone

1. Press and hold to switch on the phone.
2. To switch off the phone, press and hold for more than two seconds.

Changing the display language

1. In Idle mode, press the **Menu** soft key.
2. Press the Navigation keys to scroll to **Setup** and press the **Select** soft key.
3. Press the Navigation keys to scroll to **Display** and press the **Select** soft key.
4. Press the **Select** soft key again when **Bahasa/Language** highlights.
5. Press the Navigation keys to scroll to the language you want and press the **Select** soft key.

Making a call

1. In Idle mode, enter the area code and phone number, and press .
2. To end the call, press .

Answering a call

1. When the phone rings, press to answer a call.
2. To end the call, press .

Adjusting the volume

1. In Idle mode, press the **Menu** soft key.
2. Select **Setup** → **Sounds** → **Ringer vol./Type** → **Voice calls** → **Volume**.
3. Press the Navigation keys to adjust the volume level. Press **Play** soft key to listen to a melody.
4. Press the **OK** soft key.

While a call is in progress, press the Volume keys to adjust the earpiece volume.

Changing a ringtone for calls

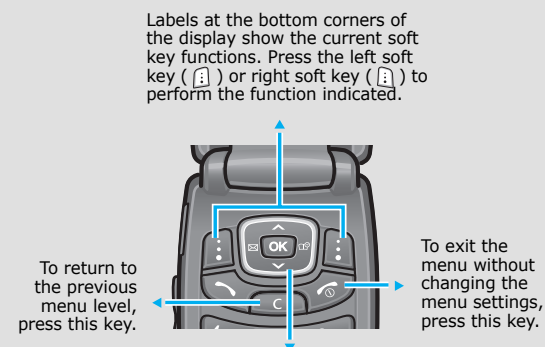
1. In Idle mode, press the **Menu** soft key.
2. Select **Setup** → **Sounds** → **Ringer** → **Voice calls**.
3. Press **Down** and scroll to a ringer type by pressing **Left** or **Right**.
4. Press **Down** the scroll to a ringer melody.
5. Press **Play** soft key to listen to a melody.
6. Press the **Save** soft key.

Viewing and dialling the most recent calls

1. In Idle mode, press .
2. Press **Left** or **Right** to select a call type.
3. Press **Up** or **Down** to scroll to a number or name.
4. Press the **Select** soft key to view details of the call or to dial the number.

Using the menus

In Idle mode, press the **Menu** soft key to enter the main menu.



Use the 4-way navigation keys () to scroll up, down, left, or right through the menu system, highlight menu items, change feature settings, and play games.

To select and modify menu or feature:

1. In Idle mode, press the **Menu** soft key.
2. Press the Navigation keys to reach the desired menu and then press the **Select** soft key.
3. If the menu contains any submenu, locate the one you want by pressing the Navigation keys. Press the **Select** soft key to enter the submenu. If the selected menu contains additional submenus, repeat this step.
4. Press the Navigation keys to find the setting of your choice.
5. Press the **Select** or **OK** or **Save** soft key to confirm your chosen setting.

Shortcut numbers

You can quickly access the menu you want by using shortcut numbers. The shortcut number displays in front of the menu name in Menu mode.

Menu map

- | | |
|---|---|
| <ol style="list-style-type: none"> 1. Calls <ol style="list-style-type: none"> 1.1 Missed 1.2 Incoming 1.3 Outgoing 1.4 Air time 1.5 Call forward 1.6 Call waiting 1.7 Call reject 1.8 Int'l call prefix 2. Phonebook <ol style="list-style-type: none"> 2.1 Find 2.2 Add 2.3 Group settings 2.4 My phone # 3. Message <ol style="list-style-type: none"> 3.1 New message 3.2 Inbox 3.3 Outbox 3.4 Msg. settings 3.5 SOS message 3.6 Memory info | <ol style="list-style-type: none"> 4. Scheduler <ol style="list-style-type: none"> 4.1 View month 4.2 Jump to date 4.3 Alarm set 4.4 Calculator 4.5 Today 4.6 To do list 4.7 Memo pad 4.8 Countdown 4.9 World time 5. Games <ol style="list-style-type: none"> 5.1 Gaza 5.2 Honey ball 6. Setup <ol style="list-style-type: none"> 6.1 Sounds 6.2 Display 6.3 Answer mode 6.4 Security* 6.5 Entry method |
|---|---|

* You need to enter the phone password. It is preset to "00000000."

Entering text

Changing the text input mode

- In the text input field, press the **Mode** soft key.
- Press the Navigation keys to scroll to the mode you want: **T9 Indonesia**, **T9 Word**, **123**, **Symbol**, and **ABC**.
- Press the **Select** soft key.

T9 Indonesia mode

- Press keys **2** to **9** to start entering a word. Press each key only once for one letter.
The word you are entering appears on the display. It may change with each key press.
Finish entering the word before editing or deleting any keystrokes.
Example To enter "Hello" in T9 mode, press **4**, **3**, **5**, **5**, and **6**.
If the word is not correct, press **0** to display alternative word choices for the keys that you have pressed.
- When the word displays correctly, insert a space after it by pressing **#**.

Feature	Description	Select
Read message	Read received, sent, or saved message.	Menu > Message > Inbox, Outbox
Messaging options	Set options for using the messaging feature.	Menu > Message > Msg settings
Send SOS messages	Send SOS messages to your family or friends for help in an emergency.	Menu > Messages > SOS messages
Message memory status	Check the total number of messages you can store.	Menu > Message > Memory info
Scheduler	Keep track of daily or monthly schedule.	Menu > Scheduler > View month
Access specific date	Enter the specific date you want to access.	Menu > Scheduler > Jump to date
Alarm	Set an alarm to sound at a specific time.	Menu > Scheduler > Alarm set
Calculator	Perform basic arithmetic functions.	Menu > Scheduler > Calculator
Today	Schedule new events for the current date.	Menu > Scheduler > Today
To-do list	Create a list of tasks and assign a deadline to each task.	Menu > Scheduler > To do list

Important safety precautions

Read these guidelines before using your wireless phone. Failure to comply with them may be dangerous or illegal.

Drive safely at all times

Do not use a hand-held phone while driving; park the vehicle first.

Switching off when refueling

Do not use the phone at a refueling point (service station) or near fuels or chemicals.

Switching off in an aircraft

Wireless phones can cause interference. Using them in an aircraft is both illegal and dangerous.

Switching off near all medical equipment

Hospitals and health care facilities may be using equipment that could be sensitive to external RF energy. Follow any regulations or rules in force.

Interference

All wireless phones may be subject to interference, which could affect their performance.

ABC mode

Press the keys labelled with the letter you want:

- once for the first letter
- twice for the second letter
- and so on.

For example, you press **2** three times to enter the letter "C" and **5** two times to enter the letter "K."

Symbol mode

Press the number keys corresponding to the symbols you want. You can press **Left** or **Right** to display more symbols.

123 mode

Press the number keys corresponding to the digits you want.

Tips for entering text

- To move the cursor, press the Navigation keys.
- To delete letters one by one, press **C**. To delete all of the letters, press and hold **C**.
- To insert a space between letters, press **#**.
- To change case in T9 Word or ABC mode, press *****.
- To enter punctuation marks in T9 Word or ABC mode, press **1**.

Feature	Description	Select
Memo pad	Make memos of important things you need to remember.	Menu > Scheduler > Memo Pad
Countdown timer	Measure the time how long it takes to do something, or how many days remain until a specific event occurs.	Menu > Scheduler > Countdown
World time	Find out what time it is in another part of the world.	Menu > Scheduler > World time
Games	Play fun embedded games.	Menu > Games
Ringer melody	Select a unique ringtone for calls, messages, and alarms.	Menu > Setup > Sounds > Ringer
Ringer volume/type	Select a ringer type and adjust ringer volume for calls, messages, and alarms/schedules.	Menu > Setup > Sounds > Ringer vol./Type
Functional alert	Set sound beeps at a specified time to inform you that certain things have happened.	Menu > Setup > Sounds > Function alert
Display image	Select a background image to be displayed in Idle mode.	Menu > Setup > Display > Wallpaper
Banner text	Set a banner message to be displayed in Idle mode.	Menu > Setup > Display > Banner

Special regulations

Follow any special regulations in force in any area and always switch off your phone whenever it is forbidden to use it.


Water resistance

Your phone is not water-resistant. Keep it dry.

Sensible use

Use only in the normal position (held to the ear). Avoid unnecessary contact with the antenna when the phone is switched on.

Emergency calls

Key in the emergency number for your present location, then press . Do not end the call until given permission to do so.

Small children and your phone

Keep the phone and all its parts including accessories out of reach of small children.

Accessories and batteries

Use only Samsung-approved accessories and batteries. Use of any unauthorized accessories could damage your phone and may be dangerous.

Sending a message

Sending a text message

- In Idle mode, press the **Menu** soft key and select **Message** → **New message**.
- Enter the message text and press the **OK** soft key.
- Scroll to the saving option you want and press the **OK** soft key.
- Enter a destination number.
- Press the **OK** soft key to send the message.

Quick feature reference

This section provides brief explanations of features on your phone.

Feature	Description	Select
View recent calls	View and dial the most recent calls you have dialled, received, or missed.	Menu > Calls > Missed, Incoming, Outgoing
Air time	View the duration and number of recent calls you have dialled and received. Also reset the time counter except the life time..	Menu > Calls > Air time

Feature	Description	Select
Backlight	Set the length of time the display, adjust the brightness of the LCD and the keypad backlight stay on.	Menu > Setup > Display > Backlight
Display language	Select a language to be used for the text display.	Menu > Setup > Display > Bahasa/Language
Time and date	Set the time and date manually or set up the time zones for the Dual clock image.	Menu > Setup > Display > Set time
Contrast	Adjust the contrast of the display for varying lighting conditions.	Menu > Setup > Display > Contrast
Dialling font	Display numbers in colours when entering a phone number for dialling.	Menu > Setup > Display > Dialling font
Answer mode	Select how to answer an incoming call.	Menu > Setup > Answer mode
Lock the phone	Lock the phone manually or set the phone to lock automatically. To unlock, enter the lock code.	Menu > Setup > Security > Phone lock
Change lock code	Change your current lock code.	Menu > Setup > Security > Change lock

Use only Samsung-approved batteries and recharge your battery only with Samsung-approved chargers.

Qualified service

Only qualified service personnel may repair your phone.

CAUTION

Risk of explosion if a battery is replaced by an incorrect type. Dispose of used batteries according to the instructions.

Feature	Description	Select
Call forwarding	Set incoming calls to be forwarded to another number.	Menu > Calls > Call forward
Call waiting	Set to alert you of incoming calls while you are on a call.	Menu > Calls > Call waiting
Call rejecting	Make a list of the phone numbers from which you want to reject calls.	Menu > Calls > Call reject
International call prefix	Set the international call service numbers that are frequently used. To display the selected number, press and hold [0] in Idle mode.	Menu > Calls > Int'l call prefix.
Find Phonebook entry	Search for a Phonebook entry by name, entry number, or group name, or memory location.	Menu > Phonebook > Find
Store phone number	Store a phone number, an email address, or a memo in Phonebook.	Menu > Phonebook > Add
Rename caller group	Change the name of each caller group.	Menu > Phonebook > Group settings
Check own number	View and edit own phone number.	Menu > Phonebook > My phone #
Send message	Create a text message to send it to other mobile phones.	Menu > Message > New message

Feature	Description	Select
Emergency numbers	Store emergency numbers. These numbers can be dialled even when your phone is locked.	Menu > Setup > Security > Emergency #
Voice privacy	Encrypts the voice channel so that people cannot eavesdrop on your conversation.	Menu > Setup > Security > Voice privacy.
Restriction	Set the phone to restrict the use of call records and phonebook entries.	Menu > Setup > Security > Restriction.
Clear memory	Erase phonebook entries or messages stored on the UIM card and in the phone's memory.	Menu > Setup > Security > Clear memory.
Reset the phone	Reset the phone to return to the factory default settings.	Menu > Setup > Security > Reset phone.
Card setup	Set the security options to protect from unauthorised use of the card.	Menu > Setup > Security > Card setup.
Entry method	Select the default text input mode.	Menu > Setup > Entry method

SAR information

Your wireless phone is a radio transmitter and receiver. It is designed and manufactured not to exceed the emission limits for exposure to radio frequency (RF) energy set by the Federal Communications Commission (FCC) of the U.S. Government. These limits are part of comprehensive guidelines and establish permitted levels of RF energy for the general population. The guidelines are based on the safety standards that were developed by independent scientific organizations through periodic and through evaluation of scientific studies.

The standards include a substantial safety margin designed to assure the safety of all persons, regardless of age and health.

The exposure standard for wireless phones employs a unit of measurement known as Specific Absorption Rate (SAR). The SAR limit set by the FCC is 1.6W/kg*.

* In the U.S. and Canada, the SAR limit for mobile phones used by the public is 1.6 watts/kg (W/kg) averaged over one gram of tissue. The standard incorporates a substantial margin of safety to give additional protection for the public and to account for any variations in measurements.