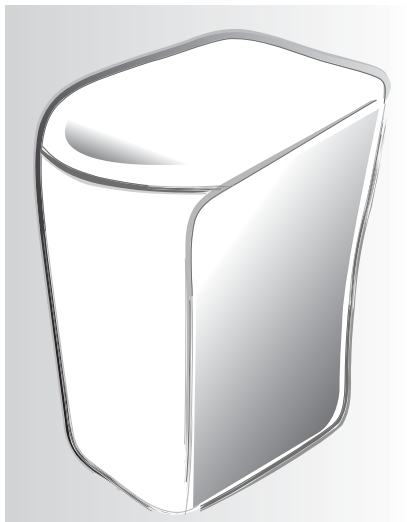




WASHING MACHINE

User's Manual



- FEATURES** 1
- SAFETY INSTRUCTIONS** 2
- DESCRIPTION OF PARTS** 3
- CONTROL PANEL** 4
- WASHING PROCEDURE** 4
- Digital(Fuzzy) course 4
- Speedy course 4
- Rinse 4
- Spin 4
- Rinse+Spin 4
- INSTALLATION & MAINTENANCE** 5
- Environment 5
- Levelling 5
- Connecting the water supply hose 5
- Assembling the rat protection panel 5
- In case of pump-drained washer 5
- Connecting the drain hose 6
- How to add the fabric softener 6
- Water supply connector filter 6
- Cleaning the filter net. 6
- How to clean the filter 6
- How to assemble the legs 6
- TROUBLESHOOTING**
- SPECIFICATIONS**

Please read this manual before using and note how to use in the proper manner.

Please be careful of keeping the manual.

Otherwise, it should be bought separately.

The User's Manual is for common use.

Make use of the User's Manual depending upon your washing machine model.

Register your product at
www.samsung.com/global/register

FEATURES

PULSATOR

- The Pulsator helps water and detergent to go through fabrics efficiently while providing both the powerful water action to clean larger and heavier clothes and the gentle water action to clean all delicates with less wear and tear on clothes.

WATERFALL FLOW

- The Waterfall Flow injected from under the pulsator cascades with full force back into the tub, pushing down any clothes that float right under the water surface. It is this Waterfall Flow that enables this washing machine to effectively wash large and heavy items, such as bluejeans and blankets.

MAGIC FILTER

- This unique magic Filter ensures that all the lint inside the tub is captured for top quality filtering results to deliver consistently effective cleaning results.

SOFTENER DISPENSER

- The Softener Dispenser releases the fabric softener at the appropriate time when the last rinsing proceeds.

CHILD LOCK FUNCTION

This is a device to protect children from being accidentally hurt while playing with the washer.

How to start the Child-Lock function:

- Press the "Power" button to go to an initial washing mode.
- By pressing "Start/Hold" button, you start washing and in case Child Lock function is needed during the laundry
- Press and hold down the COURSE button for more than 3 seconds to run the CHILD LOCK feature.

To release the function of Child-Lock:

- In case the "Child-Lock" is programmed, press the "Course" button for 3 seconds.

AUTO RESTART

- The power is turned on automatically after power failure.

SAFETY INSTRUCTIONS

Please note that the following precautions for safety intend to prevent unpredictable danger and damage by helping the proper use in safety.

When using hot water in washing, please make sure that the water should not exceed 50°C.

- Plastic parts may be deformed or damaged, and an electric shock or a fire may take place.

WARNING

There might be serious injury or fatal accident when you violate this instruction.

If the power supply cord or plug is damaged or loosened, do not use.

- An electric shock or a fire may take place.

Do not pull the cord off or touch it with moist hands.

- An electric shock or a fire may take place.

Do not bend the power supply cord by force or press it with heavy things.

- An electric shock or a fire may take place.

Do not install the washer nearby electric implement or don't put a candle light or cigarette light on the washer.

- A fire may take place.

Do not disassemble, repair or remodel it recklessly.

- When you need to repair it, please call service agent. An electric shock or a fire may take place.

During operation, do not put your hands or metal materials under the washer.

- You may be hurt by spinning board beneath the washer.

Stay away from the washer when the bottom of the washer sinks into the water.

- There might be an electric shock. Please wait until the water drains out completely.

Do not put laundry stained with gasoline, benzene, or alcohol in the washer, and keep the materials away from the washer.

- An explosion or a fire may take place.

During spinning, don't put your hand in the spinning tub.

- It may hurt your hands. If it does not stop within 15 seconds after you open the lid, call service agent immediately.

CAUTIONS

There might be a slight injury or damage when you violate this instruction.

Don't install it in the area with moisture or outdoor where it has rain or snow

- An electric shock or a fire may take place.

Please unplug the power supply cord when you do not use it.

- An electric shock or a fire may take place.

If there is dust or water on the power supply plug and its connected part, please remove it completely.

- An electric shock or a fire may take place.

Do not make your kids look into the inside of the washer.

- If your kid falls into the washer, his life could be in danger.

Ventilate immediately without touching the power plug if gas is leaking.

- An electric shock or a fire may take place if it catches flame.

If the washer makes strange noise, smell or smoke, unplug it promptly and call service agent.

- An electric shock or a fire may take place.

When cleaning, don't spray water to the parts of the washer directly.

- It may make it's life span shorten.

Also an electric shock or fire may take place

Don't use several appliances together with an outlet.

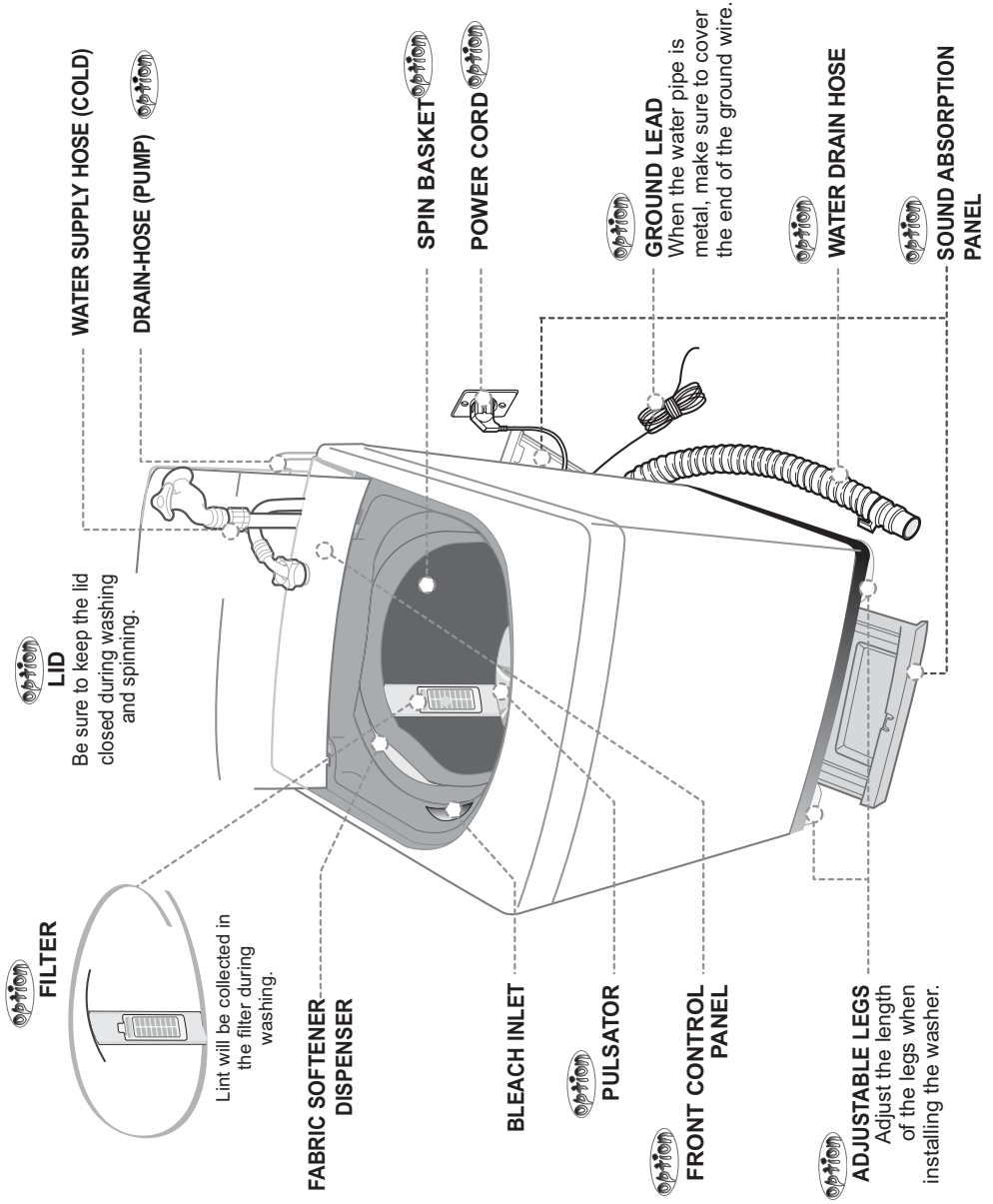
- A fire may take place due to unusual heat.

Don't press the button with an awl or pin.

- An electric shock or a fire may take place.





DESCRIPTION OF PARTS

The User's Manual is for common use.
Make use of the User's Manual depending upon your washing machine model.



CONTROL PANEL

For more details, see control panel of your washing machine.

<p>> POWER BUTTON</p> <p>Press this button once to operate. Press once again to turn the power off.</p>		<p>> COURSE SELECT BUTTON</p> <p>With every press of this button, the washing course changes; Digital(Fuzzy) → SPEEDY → RINSE → SPIN → RINSE+SPIN → Digital(Fuzzy)</p>	
<p>> START/HOLD BUTTON</p> <p>Use to pause and restart the operation. To change the washing procedure during operation, press this button to stop, and once again to restart after changing the procedure.</p>		<p>> WATER LEVEL SELECT BUTTON</p> <p>According to the washload, select the water level ; MEDIUM → HIGH → EXTRA LOW → LOW → MEDIUM</p>	

WASHING PROCEDURE

Before starting washing, check the following;

Connect the water supply hose to the water tap. Leave a tap open. Plug the power cord in.
Make sure to lay down the drain hose. (In case no drain pump)

Detergent Usage

1. Put the detergent evenly into the tube before placing the laundry in.
2. If you put the detergent into the tube next to the laundry and leave it for an extended time, the laundry may become discolored.
3. Do not use too much detergent. Some of the detergent may not dissolve immediately and may remain on the laundry causing damage to it, if too much detergent is used or the water temperature is too low.

> Digital(Fuzzy) COURSE

Selects the best washing course automatically.

1. Press the POWER Button to "ON".
2. Press the START/HOLD button.

Washing, rinsing, and spinning follow.

If you want to pause, press the START/HOLD button again. You can change the course when paused.

3. Close the lid.



1. Press the POWER Button to "ON".
2. Press the course select button twice.
3. Press the START/HOLD button
4. Close the lid.

> SPIN COURSE

When you want spin only do the followings.

1. Press the POWER Button to "ON".
2. Press the course select three times.
3. Press the START/HOLD button.
4. Close the lid.



> SPEEDY COURSE

Because washing is speedy, it is good for light or less stained laundry.

1. Press the POWER Button to "ON".
2. Press the course select button once.
3. Press the START/HOLD button

Washing, rinsing, and spinning follow.

If you want to pause, press the START/HOLD button again. You can change the course when paused.

4. Close the lid.



> RINSE+SPIN

1. Press the POWER Button to "ON".
2. Press the course select button four times.
3. Press the START/HOLD button.
4. Close the lid.

Rinsing and spin drying follow.



> RINSE COURSE

When you want rinse only do the followings.



INSTALLATION & MAINTENANCE

The User's Manual is for common use.

Make use of the User's Manual depending upon your washing machine model.

ENVIRONMENT

Leave some space

Maintain at least 10cm between the washer and the wall.

Place the washer on a sturdy flat surface.

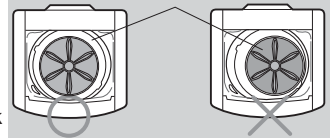
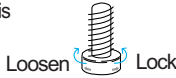
If the washer is placed on an uneven or weak surface, noise or vibration occurs. (Allowable is 1°)

Adjust the legs for even placement.

- **LEVELLING** • If the washer is not leveled with the ground, it makes the machine tremble more or be out of order. So, make sure that the washer is leveled properly.

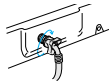
SEE IF THE MACHINE IS PLACED LEVEL BY CHECKING THE POSITION OF THE WASHING TUB.

- Open the lid of the machine, pour water into the tub up to the level just below the pulsator, and adjust the legs so that the pulsator is positioned at the center of the water as shown in the figure.
- Place the machine more than 10cm away from the wall.
- Adjust the legs on feet for levelling.



➤ CONNECTING THE WATER SUPPLY HOSE

1. Remove the adaptor from the water supply hose.



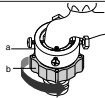
5. Connect the other end of the water supply hose to the inlet water valve at the back of the washer. Screw the hose clockwise all the way in.

2. First, using a "+" type screw driver, loosen the four screws on the adaptor. Next, take the adaptor and turn part (b) following the arrow for gap about 5mm between them.



- 5-1. Connect the other end of the water supply hose to the inlet water valve at the top of the washer. Screw the hose clockwise all the way in.

3. Connect adaptor to the water tap by tightening the screws firmly. Then, turn part (b) following the arrow and put (a) and (b) together.



- If the water tap is a screw type, assemble a water supply hose that fits to the tap as shown.

4. Connect the water supply hose to the adaptor. Pull down the part (c) of the water supply hose. When the part (c) is released, the hose is automatically connected to the adaptor making a 'click' sound.

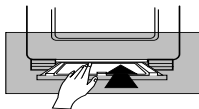


NOTICE After completing connection, if water leaks from the hose, then repeat the same steps.

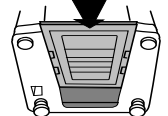
Use the most conventional type of faucet for water supply. In case the faucet is square or too big, remove the spacing ring before inserting the faucet into the adaptor.

➤ ASSEMBLING THE RAT PROTECTION PANEL

1. Insert the sound absorbing panel to the assembling hole on back side to the end.



2. If you have difficulty inserting the panel lift up the washer a little and insert it



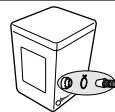
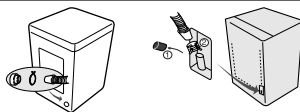
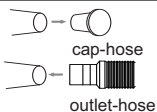
➤ IN CASE OF PUMP-DRAINED WASHER

Take out the cap-hose and connect the outlet-hose.

Be sure to join tightly the drain hose into the drain-outlet on the back of the machine.

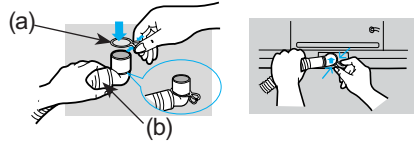
Be sure to join tightly the drain hose into the drain-outlet on the side of the machine.

Install the drain hose in the position of about 90~100cm above the ground.



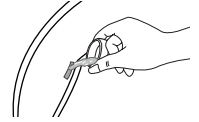
➤ CONNECTING THE DRAIN HOSE

After pressing the joint ring(a), insert the drain hose(b) to drain direction.

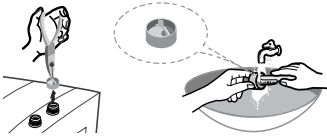


➤ HOW TO ADD THE FABRIC SOFTENER

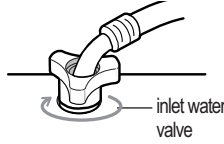
- When a proper amount (one time does) of fabric softener is stored in the softener inlet, it is automatically put in at the last rinsing cycle.
- Do not use detergent, bleach or starch into the Softener Inlet.
- Using too much softener may produce unsatisfactory results.
- Do not open the lid during the Spin Dry cycle. If added too early, its effectiveness will decrease.
- Do not leave the softener into the Softener Dispenser for a long time. Because softener became stiff.



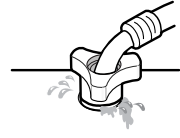
➤ WATER SUPPLY CONNECTOR FILTER



1. Pull out the filter and wash well.



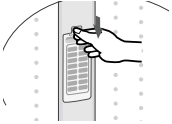
2. Pull in the filter and connect the hose to the inlet water valve tightly.



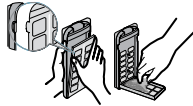
3. Check if there is a leakage. Note to tighten up the connector.

➤ CLEANING THE FILTER NET

Clean the filter net often to keep the washer clean.



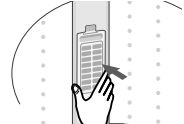
1. Push the upper part of the filter and pull in.



2. Open the cover as shown in the figure.



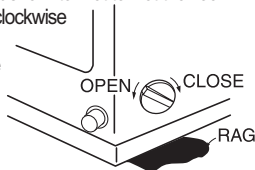
3. Clean the filter.



4. Close the cover and insert the lower part of the filter in the basket first and then push the filter with "click" sound.

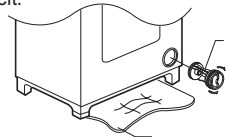
➤ HOW TO CLEAN THE FILTER

1. Place a rag under the washer filter not to wet the floor.
2. Rotate the filter counterclockwise and pull out the filter.
3. Remove dirt and rotate the filter clockwise until it locks in position.



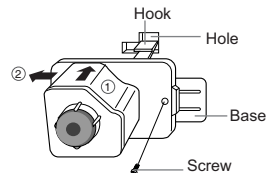
(pump drained washer)

1. Place a rag under washer filter not to wet the floor.
2. Turn the filter-cap to the left.
3. Take the filter out and remove dirt.
4. Reassemble in reverse order.



➤ HOW TO ASSEMBLE THE LEGS

1. Check the 4 Legs. (Front-right. Front-left. Rear-right. Rear-left)
2. Lay down the Washing Machine to the front.
3. Insert the hook of leg in to the square hole of base.
4. Push the leg to the arrow direction to "Click".
5. Finally fix the legs on the base with screw like a figure.



TROUBLESHOOTING

➤ Washing machine won't work

- Is the water tap opened?
- Is the washer plugged in?
- Is the power cut off?
- Is there enough water?



➤ Water is not supplied

- Is the water tap opened?
- Is the water cut off?
- Is the water supply hose or hose connection clogged?
- Is the water tap frozen?

If water is not supplied in 1 hour, a buzzer will sound.

DISPLAY : Speedy LED On +
Water Level LEDs Blink

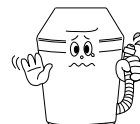


➤ Water dose not drain

- Is the drain hose down?(No pump)
- Is the drain hose frozen?
- Is the drain hose clogged?

If the water dose not drain in 15 minutes, a buzzer will sound.

DISPLAY : Spin LED + Speedy LEDs On +
Water Level LEDs Blink



➤ Spinning does not work

- Is the laundry spread out evenly in the washer?
- Is the washer set on a sturdy flat surface?



➤ Water is overflowed

- Restart after spinning.
- If the error sign still indicates, call agency.

IN CASE THE NEED FOR SERVICING ARISES.

If any problem occurs with your products, do not hesitate to call any nearby. Name, address, telephone number is required.

SAMSUNG

SPECIFICATIONS

POWER CONSUMPTION	WASH	330W	STANDARD WATER LEVEL	HIGH	56 l
	SPIN	246W		MED	49 l
DIMENSIONS(mm)		W540xD560xH850		LOW	41 l
				MIN	34 l
WEIGHT	30 kg		WATER USAGE		140 l
WATER PRESSURE	0.05~0.78 MPa (0.5 ~ 8.0 kg · f/cm ²)		PULSATOR ROTATING SPEED		113 rpm
WASHING TYPE	Stirring Type				

CODE NO. : DC68-02197A