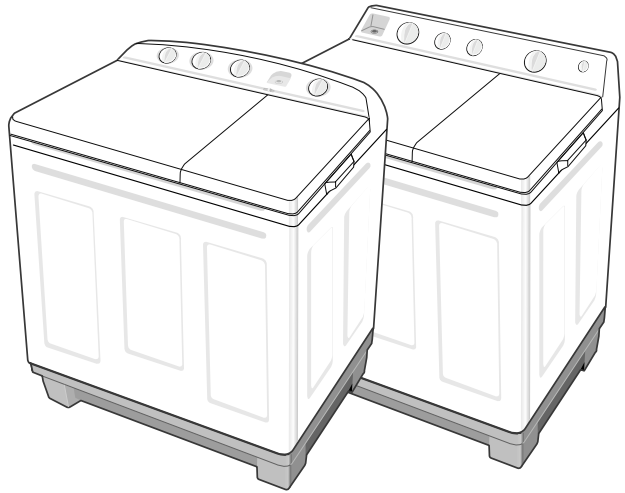


SAMSUNG

Owner's Instructions

SWT70A1/ SWT70B1/ SWT75A1

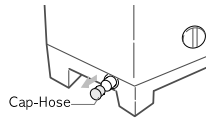
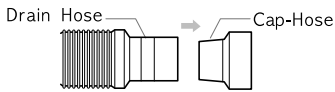


Before operating the unit, please read this manual thoroughly, and retain for future reference.

| | |
|---|---|
| BEFORE USING THE WASHER | 1 |
| CAUTIONS | 1 |
| PRECAUTIONS WHEN OPERATING | 1 |
| DESCRIPTION OF PARTS | 2 |
| CONTROL PANEL | 2 |
| WASHING PROCEDURE | 3 |
| To wash | 3 |
| Spin dry | 3 |
| Rinsing | 4 |
| Over flow rinse | 4 |
| Additional rinse | 4 |
| INSTALLATION | 5 |
| Environment | 5 |
| Changing the position of the drain hose | 5 |
| How to clean the filter | 5 |
| CLEANING THE MACHINE | 5 |
| AFTER OPERATION | 5 |
| LAUNDRY GUIDE | 6 |
| MAINTENANCE | 6 |
| TROUBLESHOOTING | 6 |
| SPECIFICATIONS | 6 |

BEFORE USING THE WASHER

- Remove the cap-hose from the drain hose.
- In case of pump drained washer, remove the cap-hose from the drain hole.



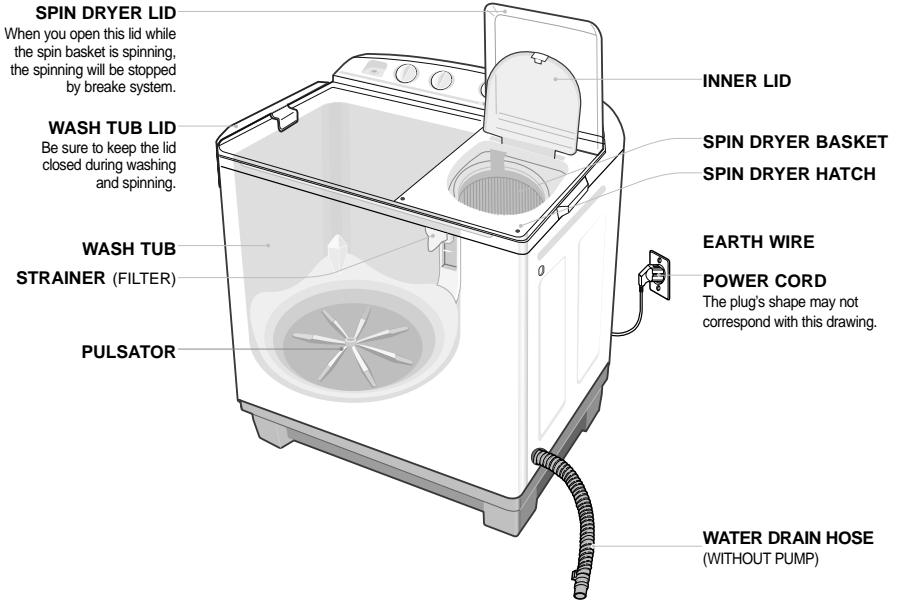
CAUTIONS

- **Be sure that the washer is grounded.**
To avoid electrical shock, use a metal pipe for the ground connection. But, don't ground the washer with gas pipes or telephone lines to avoid to dangers of explosion or lightning strike.
- **Do not put your hands into the spin dryer basket when it is spinning.**
Your fingers can be caught by spinning laundry and damaged.
- **Never allow children to operate or play with the washer.**
Children playing with the washer may accidentally fall into the washing tub.
- **Disconnect the power cord from the power supply when not in use.**
- **Ventilation** opening must not be obstructed by carpeting when the washing machine is installed on a carpeted floor.
- **If the supply** cord of this appliance is damaged, it must only be replaced by a repair shop appointed by the manufacturer, because special purpose tools are required.
- **Warning** to avoid overfilling and damages this appliance must be filled with the operator present using a moderate water supply pressure only.
- **Do not store or use gasoline or other flammable vapors and liquids in the vicinity of this or any other appliance.**

PRECAUTIONS WHEN OPERATING

- **Don't use excessively hot water. (50°C or more)**
Plastic parts may be deformed or damaged. Also, clothing may be deformed or decolored.
- **Before washing, check all pockets.**
If nails or pins remain in pockets, they may damage the washer or clothes.
- **Close the water tap a little if the water pressure is too high.**
- **Be sure to cover with the inner cover on laundry before spinning.**
This prevents laundry from being tossed out and damaged.
- **To avoid water splashes, close the wash tub lid.**
- **Never splash water on the control panel.**

DESCRIPTION OF PARTS



CONTROL PANEL

1. WASH TIMER

This is used to set the wash time, 1-15 minutes.

2. WASH SELECTOR

Refer to the washing time and washing selection.

3. CYCLE SELECTOR

This is used to set the Washing/Rinsing or draining.

4. SPIN DRY TIMER

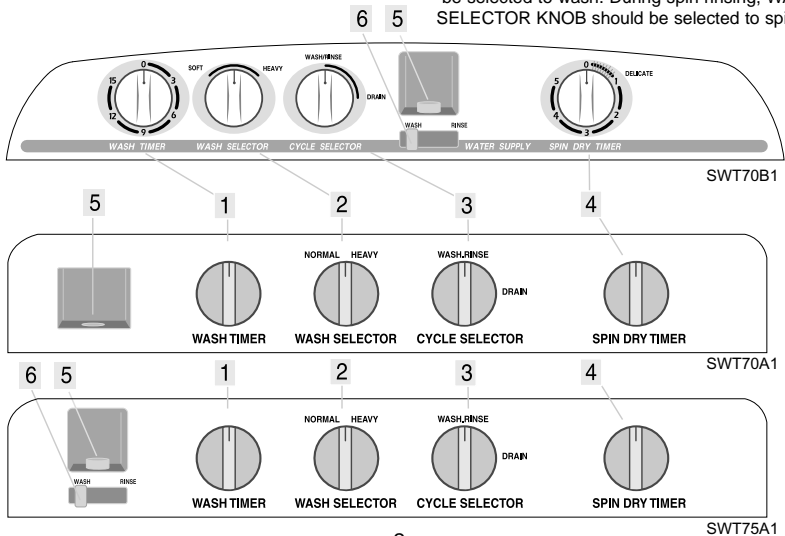
This is used to set the spin time, 1-5 minutes.

5. WATER INTAKE

Connect water inlet to a tap with a suitable hose.

6. WATER SELECTOR (For SWT70B1, SWT75A1)

During washing, WATER SELECTOR KNOB should be selected to wash. During spin rinsing, WATER SELECTOR KNOB should be selected to spin.



WASHING PROCEDURE

TO WASH

1. Before starting washing, check following;

Connect the water supply hose.

- Lay the drain hose down toward a sinkhole.

(In case no drain pump)

- Place the drain hose in sink or bath.

(In case drain pump)

- Connect the power cord to the power supply outlet .

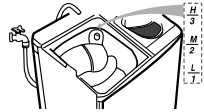
5. Fill water in the wash tub to the 'L' lower water level by carefully and add the detergent.



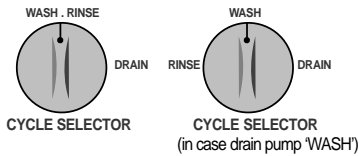
2. Set the WASH SELECTOR KNOB to the desired mode.



6. Load laundry in the wash tub and fill water to proper water level.



3. Set the CYCLE SELECTOR KNOB to 'WASH·URINSE'.



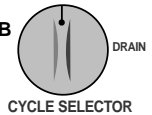
7. Set the WASH TIMER 1-15minutes.



4. Set the WATER SELECTOR KNOB to 'WASH' (For SWT70B1, SWT75A1)



8. After washing, set the CYCLE SELECTOR KNOB to 'DRAIN' for drain.

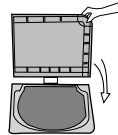


SPIN DRY

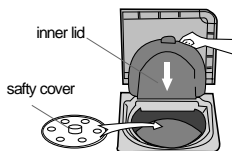
1. Transfer the clothes into the spin basket and arrange the clothes evenly.



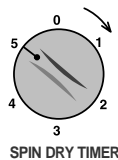
3. Close the spin dryer lid.



2. Be sure to attach the safety cover and close the inner lid.



4. Set the SPIN DRY TIMER 1-5minutes.

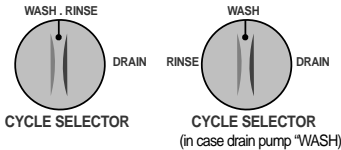


RINSING

1. Set the **WATER GUIDE KNOB** to "WASH"
(For SWT70B1, SWT75A1)



2. Set the **CYCLE SELECTOR KNOB** to 'WASH-RINSE'

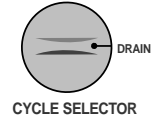


3. Supply the proper amount of water as not to overflow the top of the washing tub.

4. Set the **WASH TIMER** 2-3minutes.



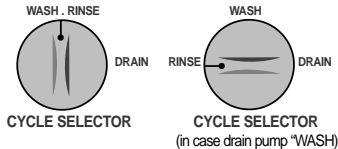
5. Drain the water. Set the **CYCLE SELECTOR KNOB** to 'DRAIN'.



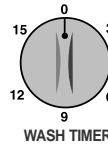
6. Repeat this cycle until drain water is clean. (2-3 cycle)

OVER FLOW RINSE

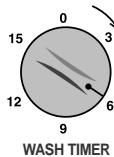
1. Keep supplying water (adjust water pressure to ensure that the amount of water supplied does not exceed that water drained.)



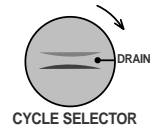
3. As soon as the **WASH TIMER** shuts off, turn off the water tap.



2. Set the **WASH TIMER** 6-8minutes.



4. Set the **CYCLE SELECTOR KNOB** to 'DRAIN'.

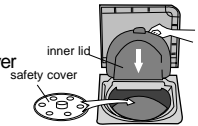


ADDITIONAL RINSE (SHOWER RINSE FOR SWT70B1, SWT75A1)

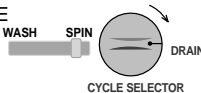
- 1 After rinsing you can select this course for more effective rinse (Don't select only this course for rinse.) Load the laundry evenly into the spin basket.



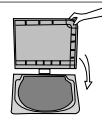
- 4 After stopping water supply, cover the laundry with safety cover and close the inner lid.



- 2 Set the **WATER SELECTOR KNOB** to SPIN for SWT70B1, and **CYCLE SELECTOR KNOB** to 'DRAIN'.



- 5 Close the spin dryer lid.



- 3 Supply water for about 1minute. Adjust the water flow to prevent overflow from the wash tub.



- 6 Set the **SPIN DRY TIMER** 2-3 minutes.



INSTALLATION

ENVIRONMENT

Leave some space

Space at least 15cm between the washer and the wall.

Place the washer on a sturdy flat surface.

If the washer is placed on an uneven or weak surface, noise or vibration may be occurred. (Allowable is 2°)

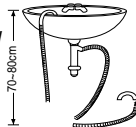
Never install the washer near water.

Do not place the washer in steamy rooms or where the washer is directly exposed to rain. Moisture may destroy the electrical insulation and cause an electrical shock hazard.

Avoid direct sunlight or heating devices.

As plastic and electrical components are affected by direct heat, never place the washer near heaters, boilers, etc. Do not place under direct sunlight.

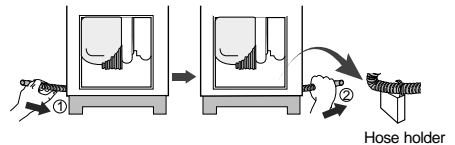
Install the drain hose about 70-80cm above the ground for pump model.



CHANGING THE POSITION OF THE DRAIN HOSE

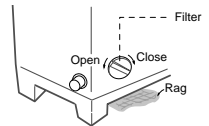
Before attempting to change the position of the drain hose, disconnect the plug from the outlet.

1. Route the drain hose inside the machine.
2. Take out the drain hose from the opposite hole and insert the drain hose into the hose holder.



HOW TO CLEAN THE FILTER (In case drain pump)

1. Place a rag under the washer filter not to wet the floor.
2. Rotate the filter counterclockwise and pull out the filter.
3. Remove dirt and rotate the filter clockwise until it locks in position.



CLEANING THE MACHINE

CLENGING THE LINT FILTER

- If the dregs are piled up in the lint filter after finishing the wash, push down and pull it out as shown in figure.
- Wash the filter net in water.

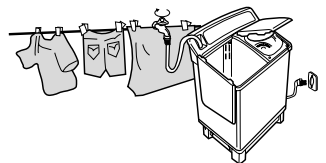


CLEANING THE WASH TUB

- Wipe off strains on the cabinet and operation panel with soft cloth.
- Do not use benzene, thinners, cleanser, or wax, nor scrub the washer with a brush.
- Painted surfaces or plastic parts will be damaged.

AFTER OPERATION

1. Remove the power cord from the outlet.
2. Take out the laundry.
3. Close the water tap and disconnect the water supply hose.
4. Clean the washing machine.
 - Periodical cleaning will extend the life of your washing machine.
 - Do not spray the unit water or use tinner, benzene, alcohol etc, for cleaning it.



WASHING TIME

| KINDS OF CLOTHING | WASHING TIME |
|--|------------------|
| Extremely solid heavy fabric | 10 to 15 minutes |
| Linen, cotton, etc. | 8 to 10 minutes |
| Ordinary clothes (underwear, etc) | 7 minutes |
| Slightly soiled synthetic fiber | 2 to 5 minutes |
| 100% wool, mixed wool knitting, thin synthetic fiber with tags indicating hand washing | 2 to 5 minutes |

SPIN DRY TIME

| TIME | TYPE OF LAUNDRY |
|----------|------------------------|
| 1 min. | Thin (synthetic fiber) |
| 1~2 min. | wool |
| 3~5 min. | cotton |
| 5 min. | thick (cotton) |

DETERGENT

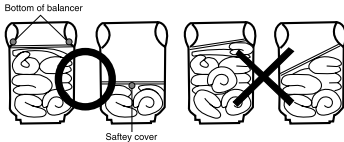
| AMOUNT OF DETERGENT | WATER LEVEL |
|---------------------|-------------|
| 32 g | Low (32l) |
| 40 g | Mid (40l) |
| 50 g | High (50l) |

The amount of detergent is average. Follow the instruction detergent printed on the package for amount of detergent. Choose the amount of detergent depending on the fabric type.

MAINTENANCE

WHEN YOU LOAD THE LAUNDRY INTO THE SPIN BASKET.

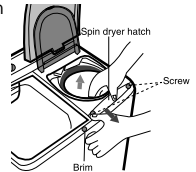
Press the laundry evenly and put the safety cover into the spin basket drum as shown in the figure.



TO PICK OUT THE CLOTHING WHICH HAS FALLEN BETWEEN THE BASKET AND TUB.

For safety, pull the power supply plug out of the socket.

1. Disassemble two screws from the spin dryer hatch.
2. The spin dryer hatch is fixed to the brim by the concave and convex parts at two places. Expand the concave and convex parts, and pull up the spin dryer hatch to remove it.
3. Remove the clothing
4. Close the spin dryer hatch. Push in hatch firmly until the catch at the front is engaged securely.



TROUBLE SHOOTING

| TROUBLE | CHECK POINT | TROUBLE | CHECK POINT |
|-------------------------------|--|-------------------------------------|---|
| The washer does not work. | Check that the power cord is connected to a power outlet well. Power stoppage? | Incomplete draining | Is the filter clogged with lint? ● See "Cleaning the machine" on page 5. |
| Clothes will not move freely. | Is the laundry overloaded? | The spin dryer basket will not run. | Is the spin dryer lid closed completely? Are laundry (socks, etc.) falling out of the spin dryer basket and clinging to the axle? ● See "To pick out..." on page 6. |
| Incomplete spinning | Are the laundry arranged evenly? | | |

IF YOU NEED HELP.

Do not hesitate to call your local samsung service center.

They will be willing to help you.

Be sure to give them your name,address,telephone number and the purpose of the call.

SPECIFICATION

| MODEL | SWT70A1 | SWT70B1 | SWT75A1 |
|-----------------------------------|---|-----------------|-----------------|
| DIMENSIONS (W x D x H)mm | 812 x 448 x 957 | 812 x 448 x 918 | 812 x 448 x 995 |
| WATER PRESSURE | 0.05~0.78 MPa 0.5 ~ 8.0 kg·f/cm ² | | |
| WEIGHT | With out pump | 29 kg | |
| | With pump | 31 kg | |
| EXTRACTION EFFICIENCY | 50 % | | |
| STANDARD QUANTITY OF WATER | 50 l | | |
| RATING TIME | Washing 1Hour / Spinning 15minutes | | |