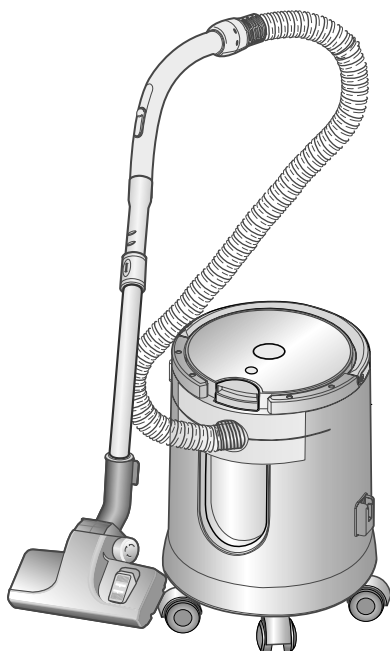


SAMSUNG

Operating Instructions



Samsung Smart Drum Vacuum Cleaner



* Before operating this unit, please read the instructions carefully.

* Indoor use only.

Register your product at www.samsung.com/global/register

IMPORTANT SAFEGUARDS

When using an electrical appliance, basic precautions should always be followed, including the following :

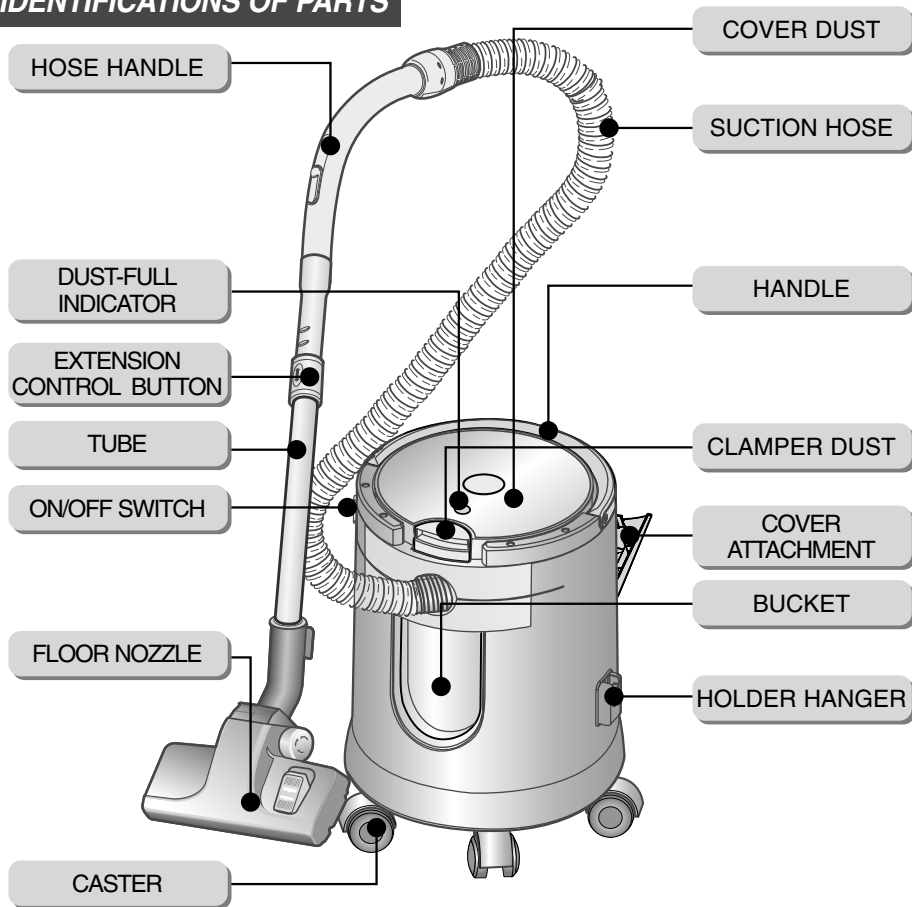
1. Read all instructions before using this vacuum cleaner.
2. This machine is suitable FOR INDOOR USE ONLY.
3. Before using the vacuum cleaner, make sure that the voltage shown on the rating plate on the side of the machine corresponds with the mains voltage.
4. If this machine is not correctly operating with any problem such as strange noise, smell or smoke from it, switch it off and consult the authorized service agent.
5. Keep the machine away from heat sources which can make the plastic parts of the unit deform and discolor.
6. Do not spray flammable or combustible liquids such as gasoline on the cleaner.
7. Do not step and put a weight on the cord and hose.
8. The use of an extension cord is not recommended and don't put plug in the electrical outlet working with other electric appliances.
9. This machine must not be used without the bucket and filter. empty the bucket before it is full in order to maintain the best efficiency.
10. Overheating can be caused by blockage in the filter, nozzle, tube or hose. After removing the cause and cooling the motor, vacuum cleaner automatically start again.
11. Do not connect plug when not in use.

WARNING

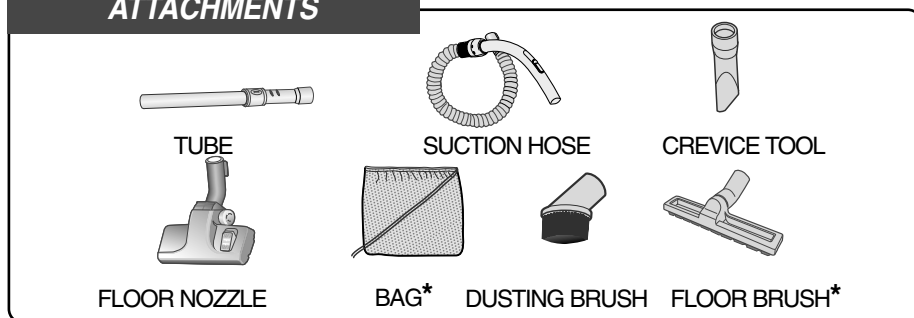
1. Remove water or dust on plug with dry towel, also don't handle plug and this machine with wet hands.
2. Turn machine off before unplugging. Do not unplug by pulling on cord.
3. If the supply cord is damaged, it must be replaced by the manufacturer or its service agent or a similarly qualified person in order to avoid a hazard.
4. This machine must not be used if there are harmful gases in the house. Let the house ventilated.
5. This machine must not be used as a toy or chair.
6. The appliance is not intended for use by young persons or infirm persons without supervision.
7. This machine must not be used on wet carpet or floor and Do not immerse in water.
8. The plug must be removed from the socket outlet before cleaning or maintaining the appliance.
9. This machine must not be used for picking up hard, sharp, explosive materials and a bubbly detergent.
10. This appliance is not intended for use by young persons or infirm persons without supervision unless they have been adequately supervised by a responsible person to ensure that they can use the appliance safely.
11. Young children should be supervised to ensure that they do not play with the appliance.

1 ASSEMBLING PARTS

IDENTIFICATIONS OF PARTS

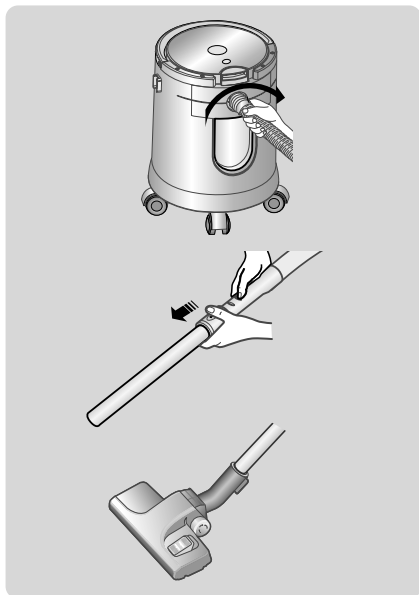


ATTACHMENTS



► Features marked * may vary according to model.

2 ASSEMBLING THE VACUUM CLEANER



1) Attaching the Suction Hose to the Cleaner

Slide the Suction Hose Clamper to the Suction Inlet of the Cleaner and Turn it clockwise until it "clicks" into place.

2) Attaching the Tube to the Suction Hose

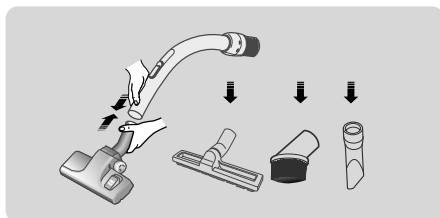
Slide the narrow end of the Suction Hose section into the end of the tube.

3) Attaching the Floor Nozzle

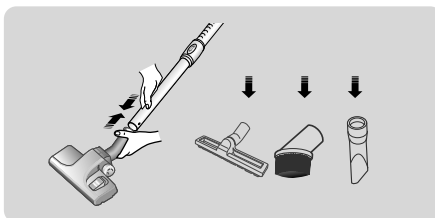
Slide deeply the free end of the Tube into the Floor Nozzle.

ASSEMBLING ACCESSORIES

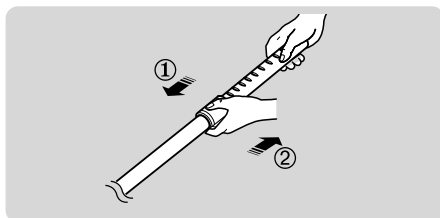
► When attaching to the Suction Hose



► When attaching to the Tube



► When using the Tube



① Extending

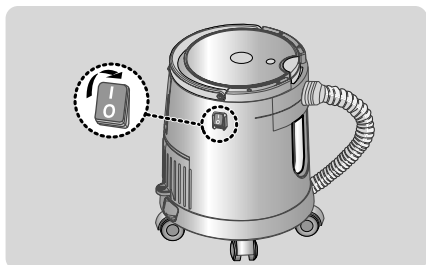
Holding the narrow side of the tube with a hand, pull the handle to the opposite side of it with another hand.

② Shortening

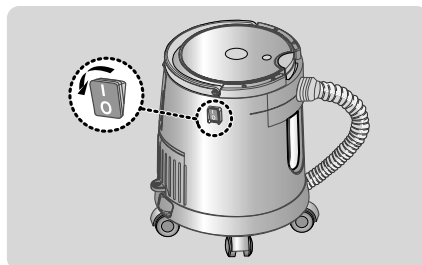
Push the handle to the narrow side of the tube, holding it with another hand.

3 OPERATION

ON/OFF SWITCH

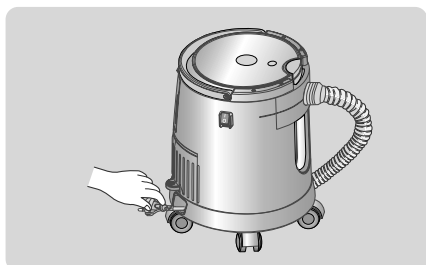


Press down "I" button at the top left side of the Body.



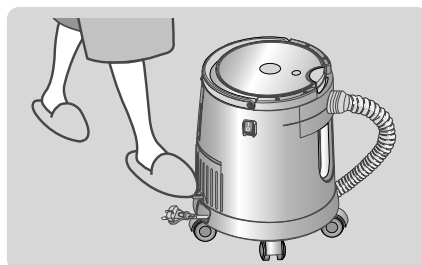
After cleaning, Press down "O" button at the top left side of the Body.

POWER CORD



PULLING OUT

The long power cord can be drawn out for your convenience.



REWINDING

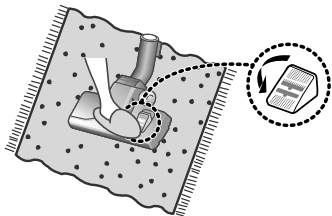
After disconnecting the plug from the electrical outlet, press the cord rewind button lightly with your toe. The cord will automatically rewind.

NOTE

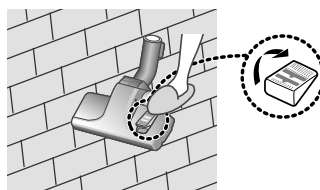
When removing the power cord from the electrical outlet, grasp the plug, not the cord.

BRUSHES

FLOOR NOZZLE

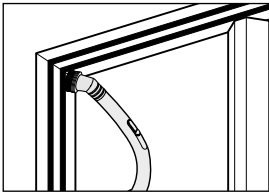


Using on Carpet



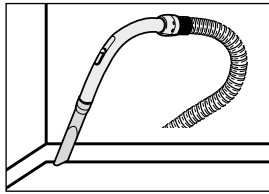
Using on Tile or Floor

DUSTING BRUSH

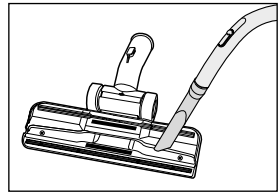


Dusting brush for furniture, shelves, books, etc.

CREVICE TOOL



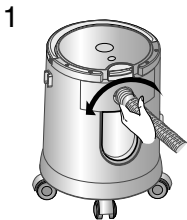
Crevice tool for radiators, crevices, corners, between cushions.



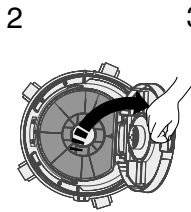
For efficiency, clean Floor Nozzle with Crevice Tool.

BUCKET AND FILTER

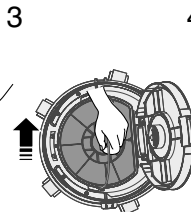
⚠ Caution : disconnect Plug before discarding dusty materials



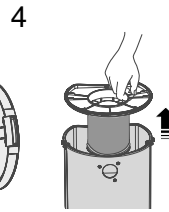
1 Turn the Suction Hose Clamber counterclockwise and pull it out.



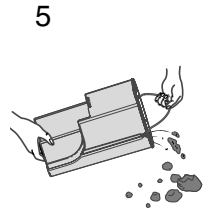
2 Open the Cover Dust.



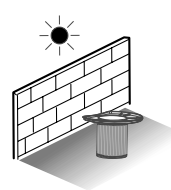
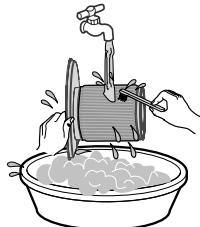
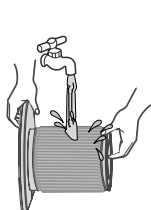
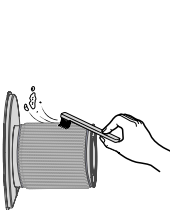
3 Hold the Bucket Handle and pull the bucket out.



4 Detach Filter.



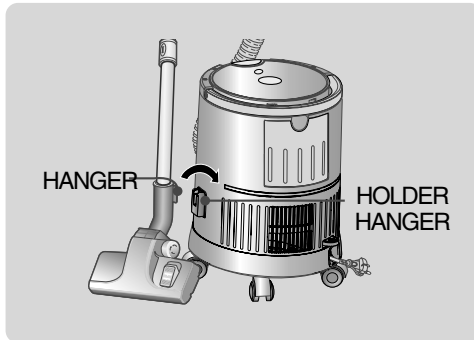
5 Dispose dusty materials.



After using, if the filter is full of dust, clean it as picture and use it again.

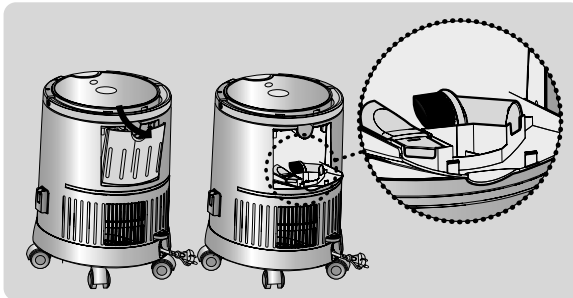
4 TOOL STORAGE

PARK POSITION



For easy storage, this vacuum cleaner has a hanger system built on the body, which will keep the Tube, Suction Hose and Floor Nozzle in a vertical position.

ACCESSORIES



Pull the Cover Attachment downward for using Accessory Tools and keep Crevice Tool and Dusting Brush as pictures.

5 SAFETY EQUIPMENT

THERMAL CUT-OUT PROTECTION

The vacuum cleaner is provided with a self-resetting thermal cut-out protection which automatically shut off current on over heating. Overheating can be caused by blockage in the filter, nozzle, tube or hose. After removing the cause and cooling the motor, vacuum cleaner automatically start again.

6 TROUBLESHOOTING

- IF YOU HAVE A PROBLEM

PROBLEM	CAUSE	REMEDY 0
Cleaner doesn't run.	Not firmly plugged in.	Plug unit in firmly.
Poor job of dirt pickup.	Clogged hose or filter, tube, nozzle.	Remove the object.
Cord doesn't rewind fully	Check that the cord is not twisted or wound unevenly.	Pull the cord out 2~3m and push down the cord rewind button.
Cover dust comes out.	Doesn't break down.	Insert it in the cleaner.

This Vacuum cleaner is approved the following.

EMC Directive : 89/336/EEC , 92/31/EEC and 93/68/EEC

Low Voltage Safety Directive : 73/23/EEC and 93/68/EEC