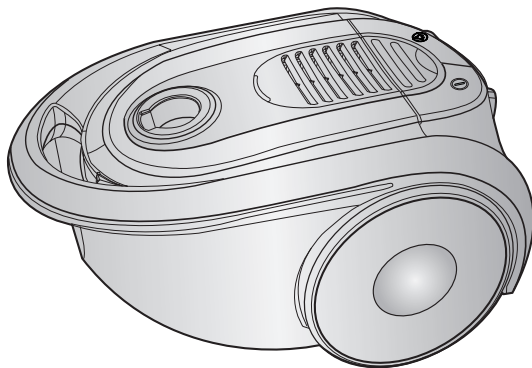


SAMSUNG

Operating Instructions



VACUUM CLEANER



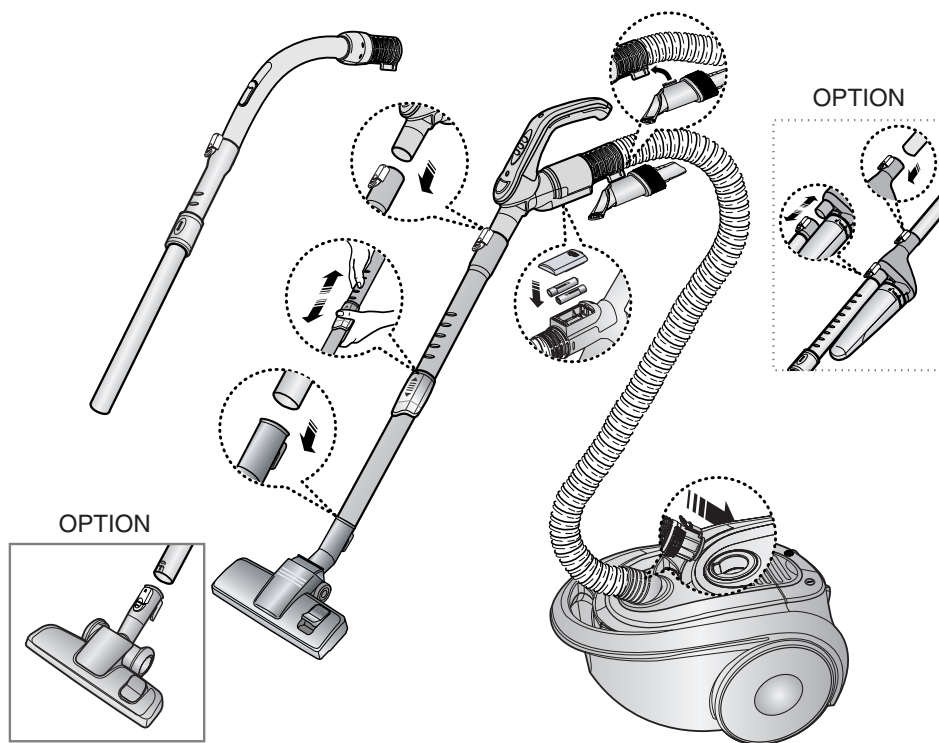
- * Before operating this unit, please read the instructions carefully.
- * For indoor use only.

Register your product at www.samsung.com/global/register

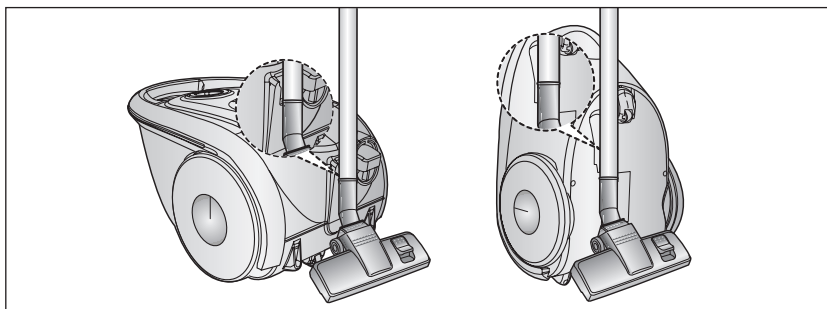
IMPORTANT SAFEGUARDS

1. Read all instructions carefully. Before switching on, make sure that the voltage of your electricity supply is the same as that indicated on the rating plate on the bottom of the cleaner.
2. **WARNING:** Do not use the vacuum cleaner when rug or floor is wet.
Do not use to suck up water.
3. This appliance is not intended for use by young persons or infirm persons without supervision unless they have been adequately supervised by a responsible person to ensure that they can use the appliance safely.
Young children should be supervised to ensure that they do not play with the appliance.
4. Do not use the vacuum cleaner without a dust bag. Replace the dust bag before it is full in order to maintain the best efficiency.
5. Do not use the vacuum cleaner to pick up matches, live ashes or cigarette butts. Keep the vacuum cleaner away from stoves and other heat sources.
Heat can deform and discolour the plastic parts of the unit.
6. Avoid picking up hard, sharp objects with the vacuum cleaner as they may damage the cleaner parts. Do not stand on the hose assembly. Do not put a weight on the hose.
Do not block the suction or the exhaustion part.
7. Switch the vacuum cleaner off at the machine before unplugging from the electrical outlet. Do not pull on the cord to disconnect the plug from the electrical outlet. Ensure that it is disconnected before attending to the filter.
8. The plug must be removed from the socket out-let before cleaning or maintaining the appliance.
9. The use of an extension cord is not recommended.
10. If your vacuum cleaner is not operating correctly, switch off the power supply and consult an authorized service agent.
11. If the supply cord is damaged, it must be replaced by the manufacturer or its service agent or a similarly qualified person in order to avoid a hazard.
12. The vacuum cleaner is provided with a self-resetting thermal cut-out which automatically shuts off on over-heating. Overheating can be caused by blockage in the filter, nozzle, tube or hose. After removing the cause and allowing the motor to cool, the vacuum cleaner will automatically restart.

1 ASSEMBLING THE CLEANER



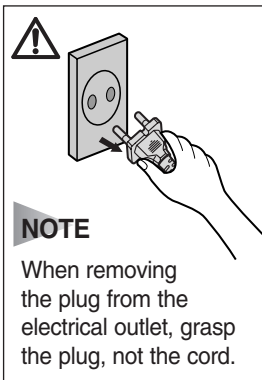
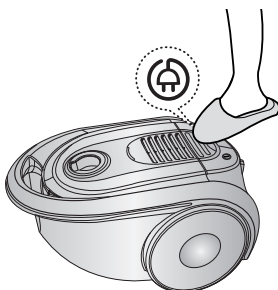
► Features may vary according to model.



For storage, park the floor nozzle.

2 OPERATING THE CLEANER

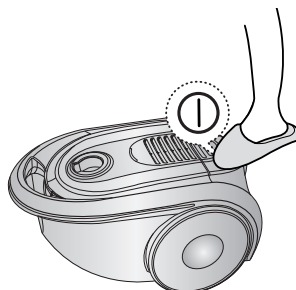
2-1 POWER CORD



NOTE

When removing the plug from the electrical outlet, grasp the plug, not the cord.

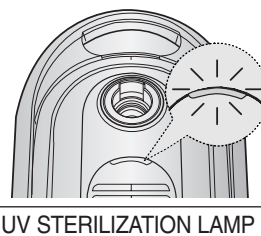
2-2 ON/OFF SWITCH



2-3 UV STERILIZATION LAMP(OPTIONAL)

The UV light is effective to kill bacteria in the dust chamber's filter, and when pushed the "ON/OFF" switch button, the UV lamp is turned on automatically and keeps performing the bacteria killing operation as long as the light remains on.

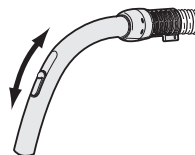
Besides, although it is stopped when the UV lamp is turned on it continues killing bacteria in the dust chamber's filter.



NOTE : Do not stare for a long time the UV STERILIZATION LAMP directly as can be harmful in eyes.

2-4 AIR CONTROL

To reduce suction for cleaning draperies, small rugs, and other light fabrics, pull the tap air until the hole is open.

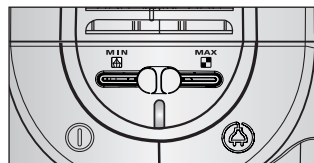


2-5 POWER CONTROL

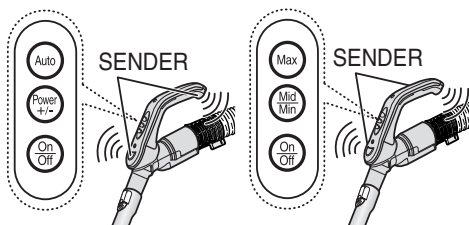
1) BODY-CONTROL TYPE

MIN = For delicate surface e.g. net curtains.

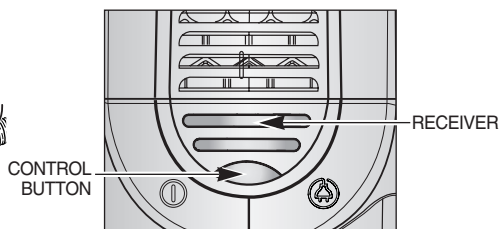
MAX = For hard floors and heavily soiled carpets.



2) REMOTE-CONTROL TYPE (INFRARED-CONTROL)



HANDLE CONTROL

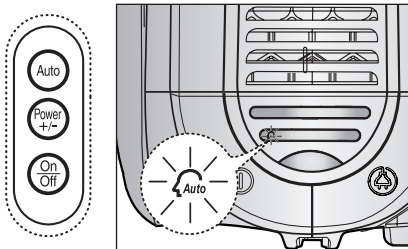


Press Power Control button repeatedly to select correct mode.
(STOP → MIN → MID → MAX → STOP)

NOTE :

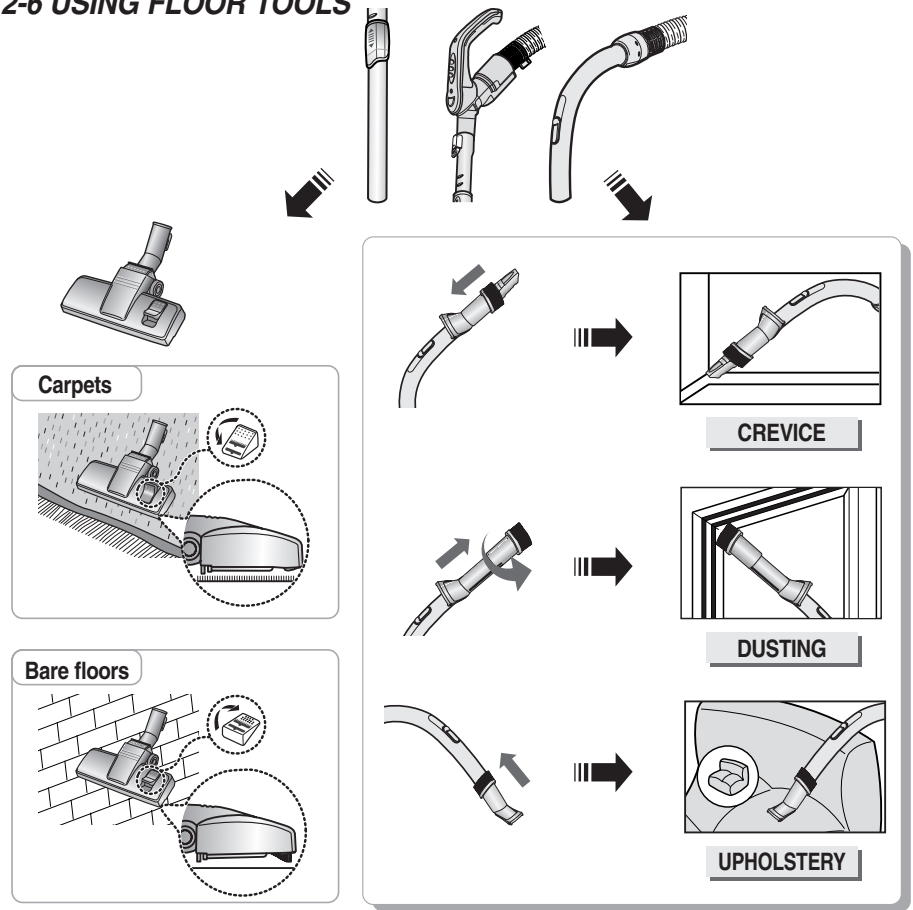
1. When using the control button for suction power, make sure that the transmitter of the remote controller not be blocked by your body.
2. When operating the cleaner in a room with a high ceiling or under intensive light, the suction power controlling button may not work properly. So, use the "Power Control" button on the main body
3. When the battery is run down, it does not work with the button pressed on the handle control part. In this case, replace the battery. (How to change: Refer to User Manual No5.)

AUTO MODE (OPTIONAL)

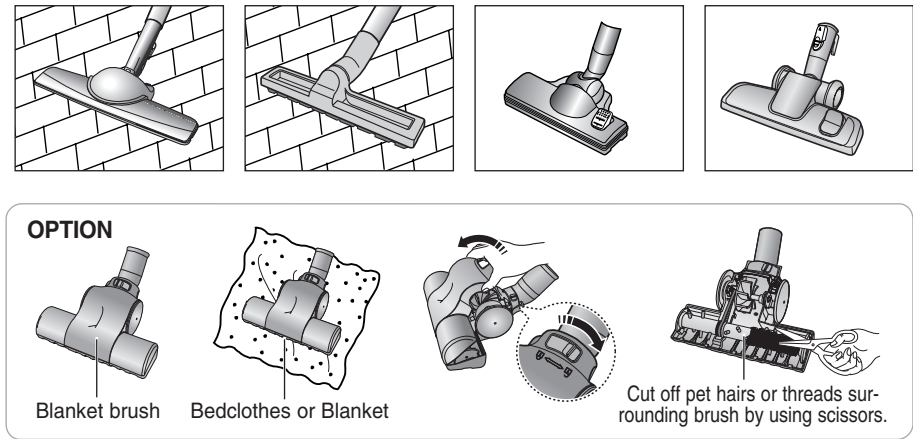


1. If pressing the "AUTO BUTTON" of the handle, "AUTO-LAMP" of the main body turns on and operates.
2. AUTO-MODE adjusts absorption power depending on increase or decrease of sucked dusts to maintain optimum cleaning status.
3. The "Power +/- button" can adjust power to MIN/MID/MAX.

2-6 USING FLOOR TOOLS



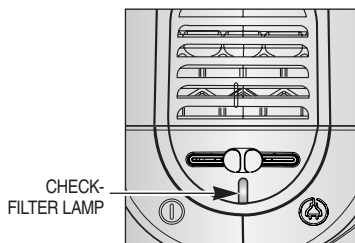
OPTION



3 CHECK FILTER INDICATOR

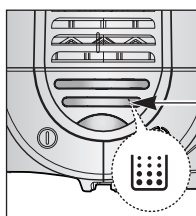
1) BODY-CONTROL TYPE

When the "CHECK-FILTER LAMP" light comes on, please change the DUST BAG(3-1) as shown in the following illustrations.

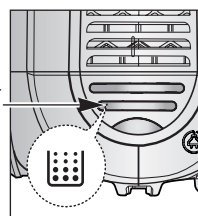


2) REMOTE-CONTROL TYPE

When the "CHECK-FILTER LAMP" light comes on, please change the DUST BAG (3-1) as shown in the following illustrations.

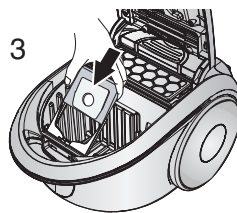
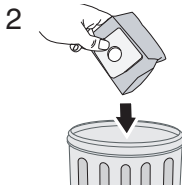
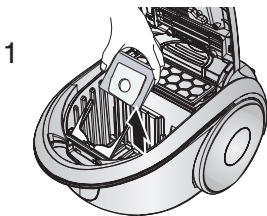


AUTO-MODE



NON AUTO-MODE

3-1 CHANGING THE DUST BAG



NOTE : A used dust bag can be sealed by removing the paper from the adhesive strip and sealing the strip over the hole.

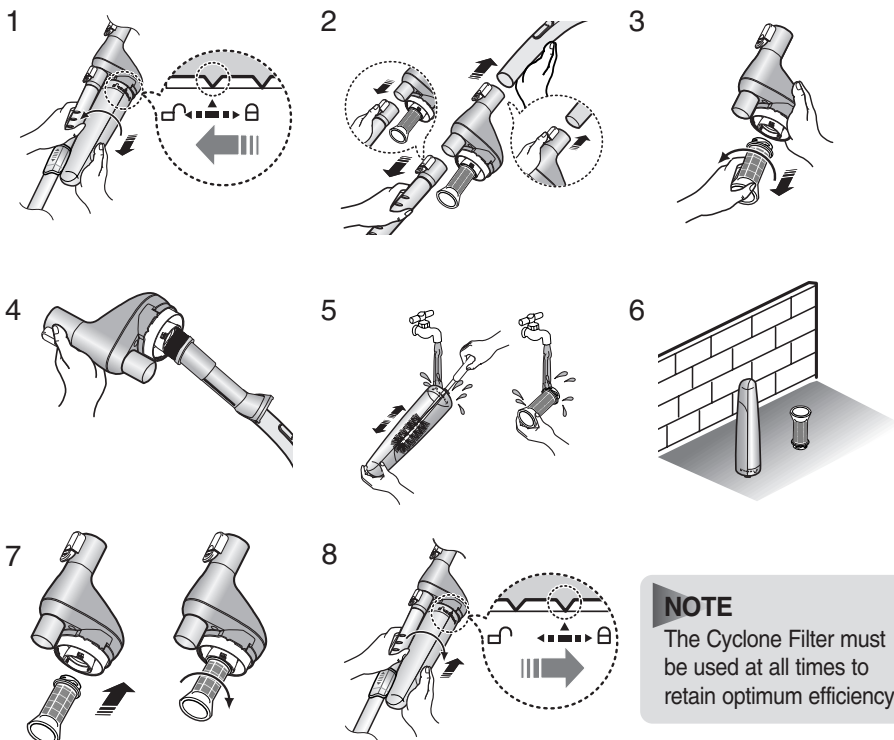


OPTIONAL

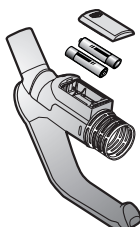
• FOR CLOTH BAG

After using, if the cloth bag is full of dust, clean the cloth bag and use it again.

4 CLEANING THE CYCLONE FILTER(OPTIONAL)



5 CHANGE THE BATTERY(OPTIONAL)



BATTERY TYPE : AA Size



NOTE

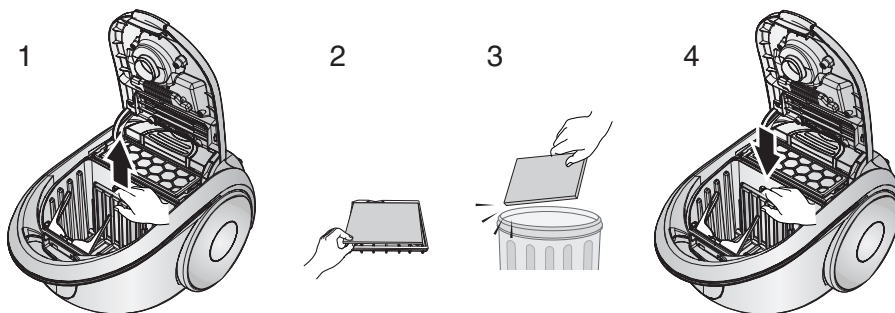
When the vacuum cleaner does not operate, replace the batteries.
If the problem persists, please contact our authorized dealer.



WARNING

1. Never disassemble or recharge the batteries.
2. Never heat up the batteries or throw them into fire.
3. Do not reverse (+),(-) terminals.
4. Dispose the batteries properly.

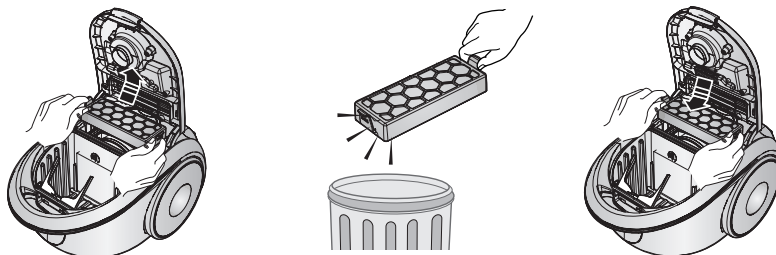
6 *CLEANING THE INLET FILTER*



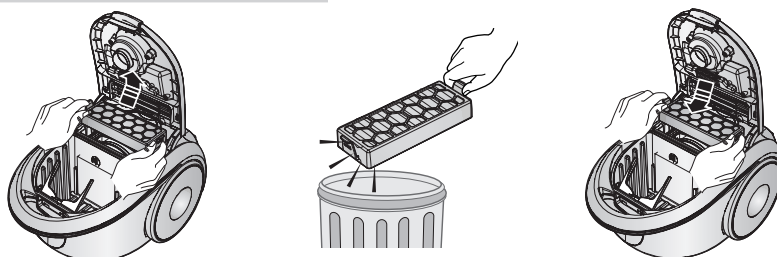
NOTE : Don't throw away the filter

7 *OUTLET FILTER*

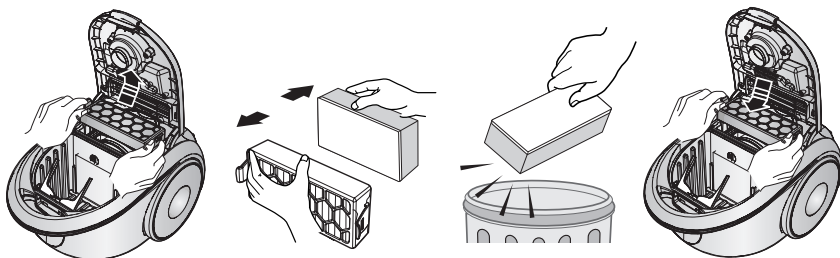
OPTION : SILVER NANO **HEPA H13 + CARBON**



OPTION : SILVER NANO **HEPA H13**



OPTION - MICRO FILTER



NOTE : Replacement filters or bags can be bought from your local Samsung distributor.

- IF YOU HAVE A PROBLEM

PROBLEM	CAUSE	REMEDY
Motor does not start.	No power supply. Thermal cut-out.	Check cable, plug and socket. Leave to cool.
Suction force is gradually decreasing.	Nozzle, suction hose or tube is blocked.	Check for blockage and remove.
Cord does not rewind fully.	Check that the cord is not twisted or wound unevenly.	Pull the cord out 2-3m and push down the cord rewind button.
Vacuum cleaner does not pick up dirt.	Crack or hole in hose.	Check hose and replace if required.
Low or decreasing suction	Filter is full with dust.	Please check filter and, if required, clean as illustrated in the instructions.

This Vacuum cleaner is approved the following.

EMC Directive : 89/336/EEC, 92/31/EEC and 93/68/EEC

Low Voltage Safety Directive : 73/23/EEC and 93/68/EEC

If you have any comments or questions regarding Samsung products, contact the SAMSUNG customer care center.

Country	Customer Care Center ☎	Web Site
U.K	0870 242 0303	www.samsung.com/uk
SOUTH AFRICA	0860 7267864 (SAMSUNG)	www.samsung.com/za

MEMO



