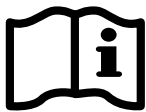
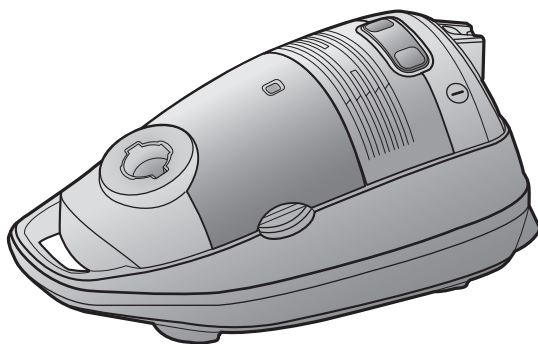


SAMSUNG

Operating Instructions



VACUUM CLEANER



- * Before operating this unit, please read the instructions carefully.
- * For Indoor use only.

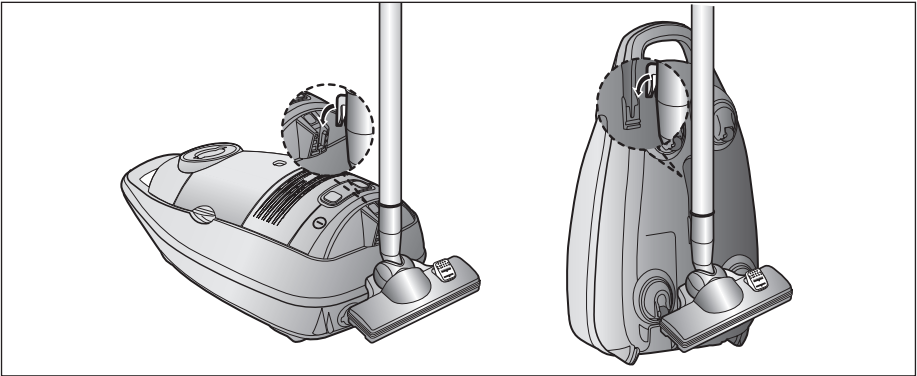
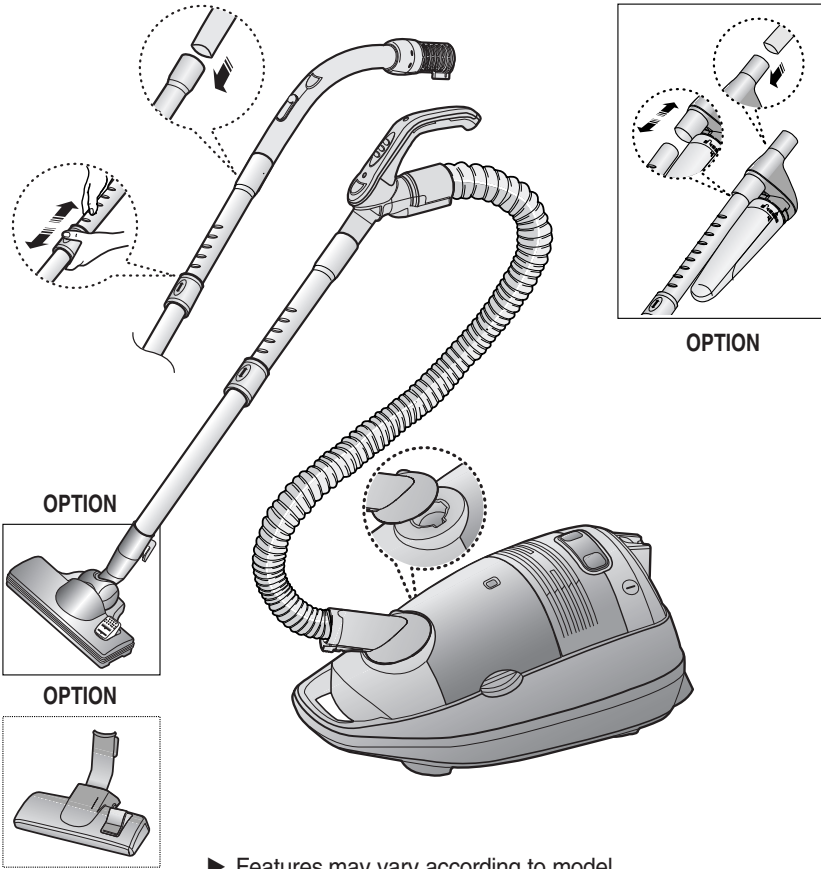
Register your product at www.samsung.com/global/register

IMPORTANT SAFEGUARDS

1. Read all instructions carefully. Before switching on, make sure that the voltage of your electricity supply is the same as that indicated on the rating plate on the bottom of the cleaner.
2. **WARNING:** Do not use the vacuum cleaner when rug or floor is wet.
Do not use to suck up water.
3. This appliance is not intended for use by persons (including children) with reduced physical, sensory or mental capabilities, or lack of experience and knowledge, unless they have been given supervision or instruction concerning use of the appliance by a person responsible for their safety.

Children should be supervised to ensure that they do not play with the appliance.
4. Do not use the vacuum cleaner without the dust bag. Empty the dust bag before it is full in order to maintain the best efficiency.
5. Slide to the Stop (or Min) position before inserting a plug into the electrical outlet.
6. Do not use the vacuum cleaner to pick up matches, live ashes or cigarette butts. Keep the vacuum cleaner away from stoves and other heat sources. Heat can deform and discolour the plastic parts of the unit.
7. Avoid picking up hard, sharp objects with the vacuum cleaner as they may damage the cleaner parts. Do not stand on the hose assembly. Do not put a weight on the hose. Do not block the suction or the exhaust part.
8. Switch the vacuum cleaner off at the machine before unplugging from the electrical outlet. Grasp the plug to disconnect cord from the electrical outlet before caring the dust bag and filters.
9. The plug must be removed from the socket out-let before cleaning or maintaining the appliance.
10. The use of an extension cord is not recommended.
11. If your vacuum cleaner is not operating correctly, switch off the power supply and consult an authorized service agent.
12. If the supply cord is damaged, it must be replaced by the manufacturer or its service agent or a similarly qualified person in order to avoid a hazard.
13. The vacuum cleaner is provided with a self-resetting thermal cut-out protection which automatically shut off current on over heating. Overheating can be caused by blockage in the filter, nozzle, tube or hose. After removing the cause and cooling the motor, vacuum cleaner automatically start again.

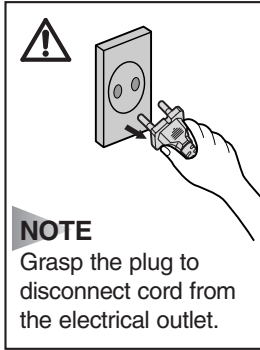
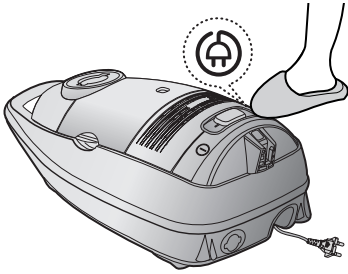
1 ASSEMBLING THE CLEANER



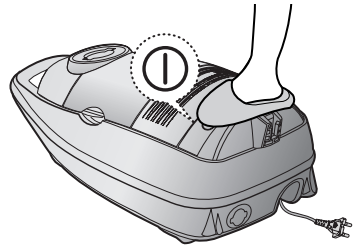
Parking floor nozzle for easier storage.

2 OPERATING THE CLEANER

2-1 POWER CORD



2-2 ON/OFF SWITCH

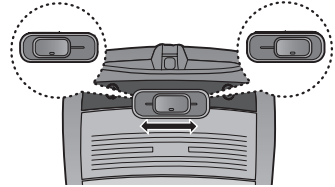


2-3 POWER CONTROL

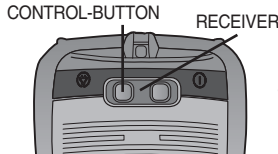
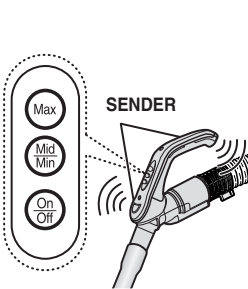
1) BODY-CONTROL TYPE

MIN = For delicate surface e.g. net curtains.

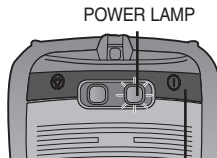
MAX = For hard floors and heavily soiled carpets.



2) REMOTE-CONTROL TYPE



Press control button repeatedly to select correct mode.
(STOP → MIN → MID → MAX → STOP)

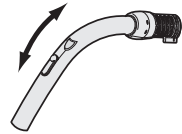


When pushed the "ON/OFF" switch button, the Power lamp is turned on automatically.

INFRARED-CONTROL

2-4 AIR CONTROL

To reduce suction for cleaning draperies, small rugs, and other light fabrics, pull the tap air until the hole is open.

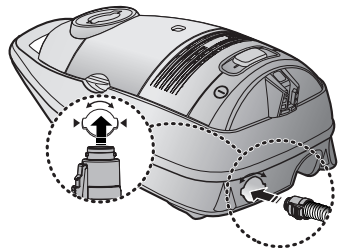


BODY CONTROL TYPE ONLY

2-5 USING THE BLOWER

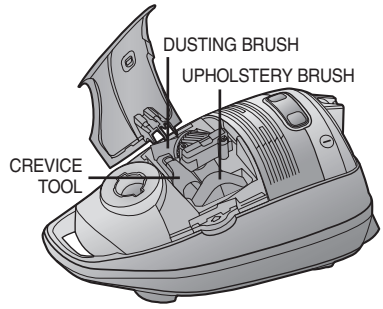
Located on the left rear side of the cleaner.

- 1) Disconnect the hose from the body of the cleaner.
- 2) Connect the hose clamber to the blow hole.

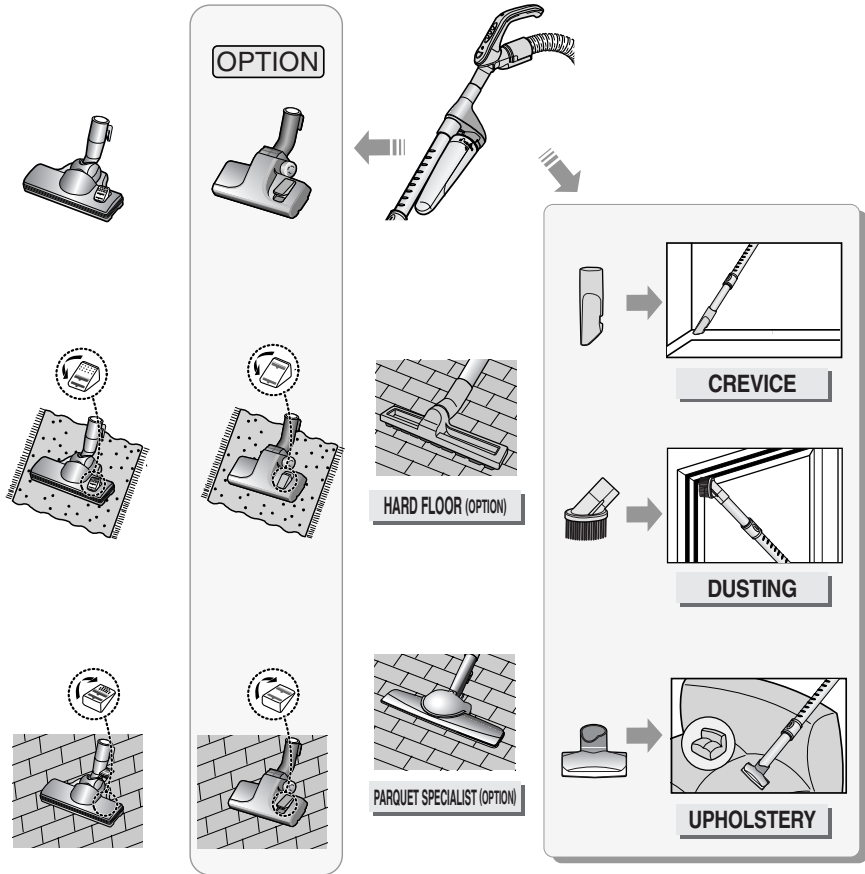


2-6 USING THE ACCESSORIES

- Dusting brush - for furniture, shelves, books, etc.
- Upholstery brush - for cushions and drapery.
- Crevice tool - for radiators, crevices, comers, between cushions.

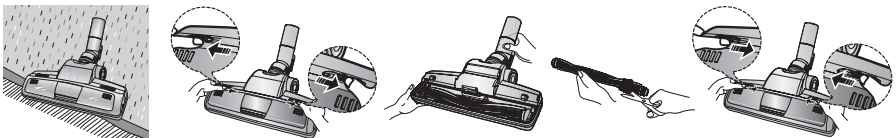


2-7 USING FLOOR TOOLS

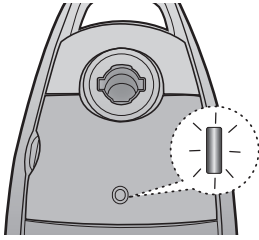


OPTION

Detach transparent drum cover for easy cleaning.

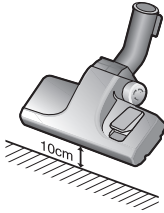


3 DUST FULL INDICATOR



If the "Dust Full" indicator turns to red color while you are cleaning, the dust bag requires replacement

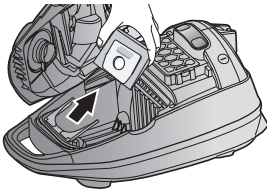
NOTE : If the "Dust Full" indicator continues to display red color even after having changed bag into new one, turn the cleaner off and check if there is any clogging in the hose, tube, floor nozzle, or on the inlet/outlet filter.



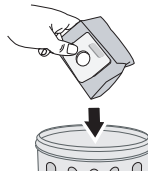
If the filter check indicator turns red with the inlet floating 10 cm above flat floor, clean it.

3-1 CHANGING THE DUST BAG

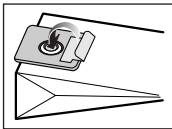
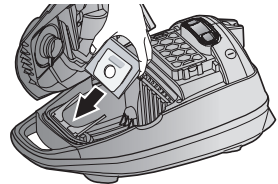
1



2



3



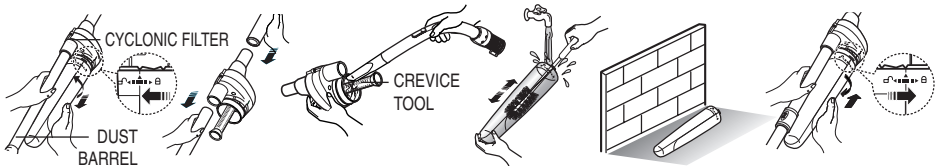
NOTE : A used dust bag can be sealed by removing the paper from the adhesive strip and sealing the strip over the hole.



• FOR CLOTH BAG

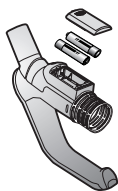
After using, if the cloth bag is full of dust, clean the cloth bag and use it again.

4 CLEANING THE CYCLONE FILTER(OPTIONAL)



NOTE : The Cyclone Filter must be used at all times to retain optimum efficiency.

5 CHANGE THE BATTERY(OPTIONAL)



BATTERY TYPE : AA Size

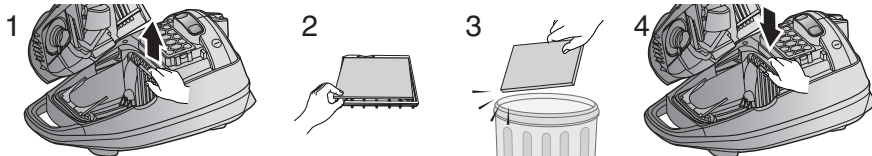


NOTE : When the vacuum cleaner does not operate, replace the batteries.
If the problem persists, please contact our authorized dealer.

WARNING

1. Never disassemble or recharge the batteries.
2. Never heat up the batteries or throw them into fire.
3. Do not reverse (+),(-) terminals.
4. Dispose the batteries properly.

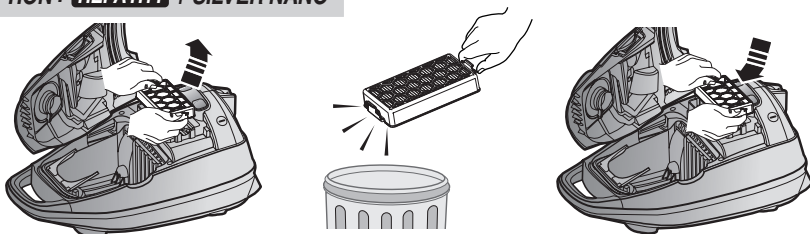
6 CLEANING THE INLET FILTER



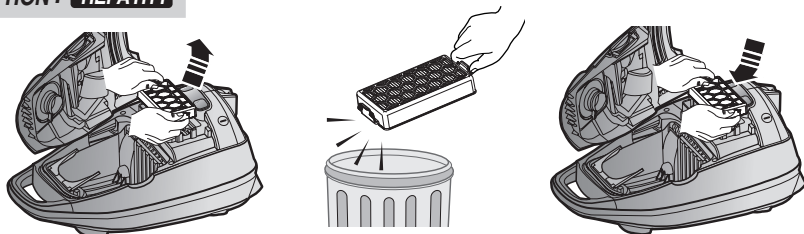
NOTE : Don't throw away the filter.

7 OUTLET FILTER

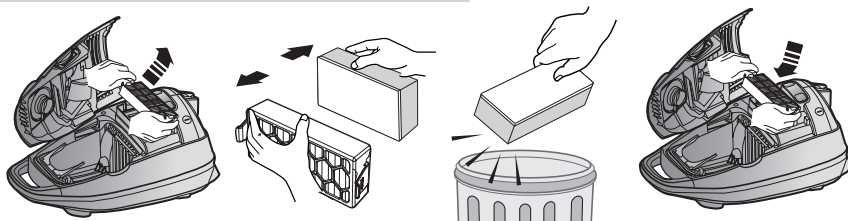
OPTION : HEPA H11 + SILVER NANO



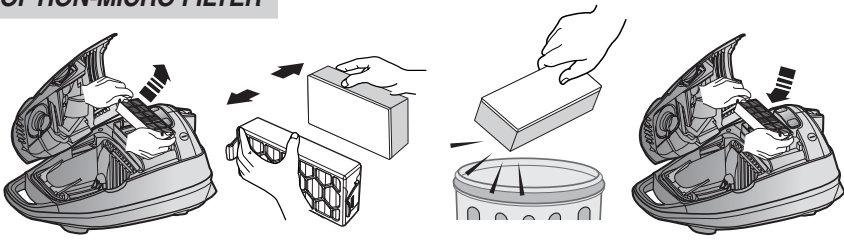
OPTION : HEPA H11



OPTION-MICRO FILTER + SILVER NANO



OPTION-MICRO FILTER



NOTE : Replacement filters or bags can be bought from your local Samsung distributor.

- IF YOU HAVE A PROBLEM

PROBLEM	CAUSE	REMEDY
Motor does not start.	No power supply. Thermal cut-out.	Check cable, plug and socket. Leave to cool.
Suction force is gradually decreasing.	Nozzle, suction hose or tube is blocked.	Check for blockage and remove.
Cord does not rewind fully.	Check that the cord is not twisted or wound unevenly.	Pull the cord out 2-3m and push down the cord rewind button.
Vacuum cleaner does not pick up dirt.	Crack or hole in hose.	Check hose and replace if required.
Low or decreasing suction	Filter is full with dust.	Please check filter and, if required, clean as illustrated in the instructions.

This Vacuum cleaner is approved the following.

EMC Directive : 2004/108/EEC

Low Voltage Safety Directive : 2006/95/EC

If you have any comments or questions regarding Samsung products, contact the SAMSUNG customer care center.

Country	Customer Care Center ☎	Web Site
U.K	0845 SAMSUNG (7267864)	www.samsung.com
SOUTH AFRICA	0860 7267864 (SAMSUNG)	www.samsung.com